

# *New Beef Sires*

## *2017*



*Kilbride Farm Glenhead*



*Glencardon Abdul*



*Rostrevor George*



*Horace*



*Bluestar Ice*



*Greenall Laughoutloud*



**Ai SERVICES**

(NORTHERN IRELAND) LTD

Ballycraigy 671 Antrim Road Newtownabbey Co Antrim BT36 4RL

Tel: 028 9083 3123 Fax: 028 9084 2640

Web: [www.ai-services.co.uk](http://www.ai-services.co.uk) Email: [info@ai-services.co.uk](mailto:info@ai-services.co.uk)

**To Book a Service Call**  
**FREEPHONE 0800 17 11 11**

# ICE

Irish Blue  
Bluestar Ice

HB No: IE111057690948  
DOB: 28.06.2016



## PEDIGREE

Sire **Tamhorn Sumo**  
PGS RY Ossogne Affute  
PGD Leverhulme Nimbus

Dam **Bluestar Essie ET**  
MGS Jalon de Martinpre  
MGD Firmount Connie ET

- *Ice shows great Breed Character*
- *Performance Data indicates 5 star rating for Carcase Weight and Terminal Index*
- *Use with caution until a detailed calving survey is carried out*



## JANUARY 2017 ICBF EUROSTAR RATINGS

	Star Rating Within Breed	€urovalue / Index Value	Index Reliability %	Star Rating Across Beef Breeds
Replacement Index	★★★★★	€48	41	★★
Terminal Index	★★★★★	€172	46	★★★★★
Calving Difficulty		10.2%	47	
Docility	★★	0.14	46	★★★★★
Carcass Weight (Kg)	★★★★★	43 kg	2.66	★★★★★
Daughter Calving Difficulty		17.52%	38	
Daughter Milk (Kg)	★★★	3.2 kg	40	★★★★
Daughter Calving Interval	★★★★★	3.80 Days	36	★

# LAUGHOUTLOUD

Charolais

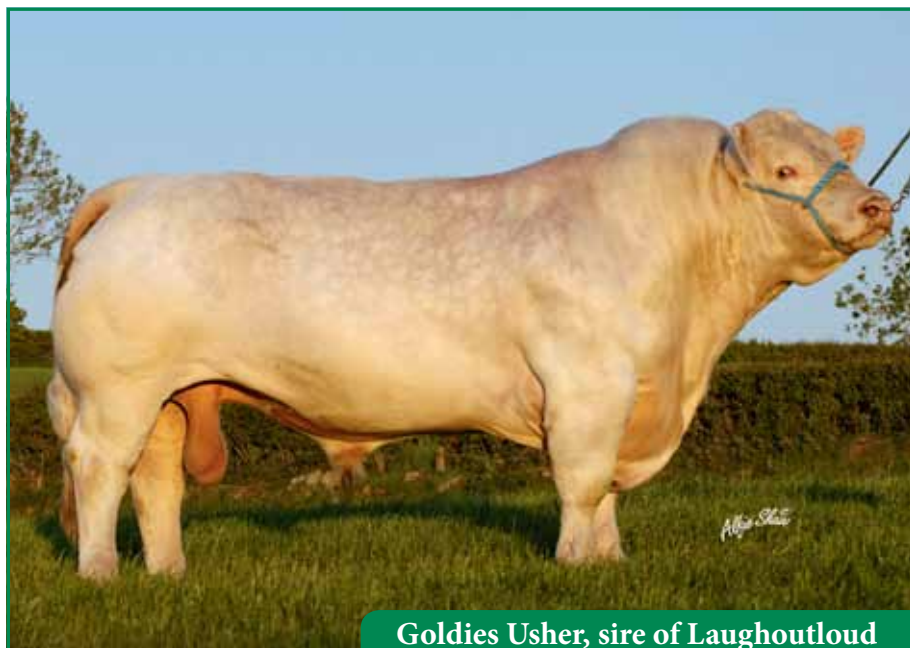
Greenall Laughoutloud

Source: United Kingdom

HB No: MBM0064806

Ear Tag UK564379700238

DOB: 10.01.15



**Goldies Usher, sire of Laughoutloud**

## PEDIGREE

Sire **Goldies Usher**  
PGS Dingle Hofmeister  
PGD Kinlune Rene

Dam **Greenall Caristania**  
MGS Doonally New  
MGD Billingley Nuala

- *Laughoutloud is sired by Goldies Usher, whose sons have sold to 22,000 gns*
- *EBVs suggest a low Birth Weight, i.e. Calving Ease on Cows*
- *Good Growth Rates with above average Muscling*

## FEBRUARY 2017 CHAROLAIS BREEDPLAN

	EBV	Accuracy	Breed Average for 2015 Born Calves
Calving Ease Direct (%)	+2.6	49	+0.4
Calving Ease Dtrs (%)	-1.2	47	-0.8
Gestation Length (Days)	+0.1	56	+1.1
Birth Weight (Kg)	+2.4	69	+2.7
200 Day Weight (Kg)	+27	67	+27
400 Day Weight (Kg)	+43	62	+45
600 Day Weight (Kg)	+48	60	+52
Mature Cow Weight (Kg)	+36	50	+49
200 Day Milk (Kg)	+8	47	+7
Scrotal Size (cm)	-0.8	44	-0.1
Carcass Weight (Kg)	+42	52	+41
Eye Muscle Area (sq cm)	+4.5	37	+3.2
Fat Depth (mm)	-0.4	42	-0.3
Retail Beef Yield (%)	+2.0	41	+1.1
IMF (%)	-0.4	37	-0.1
BCCS Terminal Index	+46	Breed Average	+40
BCCS Self-Replacing Index	+44	Breed Average	+37

# ABDUL

Speckle Park  
Glencardon Abdul  
Crikey X Rollin Stone

Source Ireland  
Ear Tag IE151040560317  
DOB: 11.12.13



- *Abdul is a fine example of the Speckle Park breed*
- *Calves are easily born, with super Growth Rates*
- *Progeny are easy fleshed with natural Muscling*

# HORACE

Salers  
Don Juan X Marengo  
Source: France

HB No: 2012017/1532157716  
Ear Tag 1532157716  
DOB: 21.01.12



- *Horace is a pure French import*
- *Horace sired the Reserve Saler Champion at RUAS 2016*

# GLENHEAD

Simmental

Kilbride Farm Glenhead

Source: Northern Ireland

HB No: M089513

Ear Tag UK906234431875

DOB: 02.06.15



## PEDIGREE

Sire **Sneumgaard Imperator**

PGS Major Sky

PGD Sneumgard Christiane

Dam **Kilbride Farm Jolly 12D**

MGS Cairnview Snazzy

MGD Kilbride Farm Jolly 9B

- ***Heterozygous Polled***
- ***Same family as 22,000 gns Kilbride Farm Foreman***
- ***Imperator is a trait leader for Calving Ease Direct***
- ***Natural Width and Easy Fleshing***

## FEBRUARY 2017 SIMMENTAL BREEDPLAN

	EBV	Accuracy	Breed Average for 2015 Born Calves
Calving Ease Direct (%)	+3.6	53	-0.5
Calving Ease Dtrs (%)	+0.2	41	-0.3
Birth Weight (Kg)	+2.8	69	+2.3
200 Day Weight (Kg)	+45	66	+31
400 Day Weight (Kg)	+65	66	+57
600 Day Weight (Kg)	+74	60	+61
200 Day Milk (Kg)	+7	30	+5
Scrotal Size (cm)	-0.3	66	+0.5
Carcase Weight (Kg)	+50	52	+40
Eye Muscle Area (sq cm)	+5.1	41	+3.3
Fat Depth (mm)	+0.8	46	+0.0
Retail Beef Yield (%)	+0.7	43	+0.6
IMF (%)	+0.0	35	-0.1
Terminal Production Index (£)	+85	Breed Average	+67
Self Replacing Index (£)	+93	Breed Average	+75

# GEORGE

British Blue  
Rostrevor George ET  
Source: Northern Ireland

HB No: B-20120276  
Ear Tag UK942228301082  
DOB: 07.08.11



## PEDIGREE

Sire **Wilodge Ubitus (SR) ET**  
PGS Cubitus du Pre Rosine  
PGD Nether Lucretia ET

Dam **Ballygrange Angel**  
MGS Epi des Granges  
MGD Reinbeck Roxanne ET

- *Pure white sire, suitable for crossing on Dairy Cows*
- *George displays smooth Muscling with natural fleshing ability*

## JANUARY 2017 BRITISH BLUE BREEDPLAN

	EBV	Accuracy	Breed Average for 2015 Born Calves
Calving Ease Direct (%)	-0.6	28	-0.6
Calving Ease Dtrs (%)	-0.4	22	-0.4
Birth Weight (Kg)	+0.4	62	+2.3
BBB Carcase Profitability Index	+5	Breed Average	+11
BBB Pedigree Breeding Index	+0	Breed Average	+6



## Ai SERVICES

(NORTHERN IRELAND) LTD

Ballycraigy 671 Antrim Road Newtownabbey Co Antrim BT36 4RL  
Tel: 028 9083 3123 Fax: 028 9084 2640  
Web: [www.ai-services.co.uk](http://www.ai-services.co.uk) Email: [info@ai-services.co.uk](mailto:info@ai-services.co.uk)

*To Book a Service Call*  
**FREEPHONE 0800 17 11 11**