






Holstein 2026




Ai SERVICES

- NORTHERN IRELAND -

Holstein Sires PTA April 2026

Page	Bull Name	PLI £	Milk Kg	Fat Kg	Protein Kg	Fat + Protein Kg	Fat %	Protein %
4	Aerospace 	616	556	47.4	28.5	75.9	0.29	0.12
5	Alabama	649	906	48.3	31.5	79.8	0.13	0.02
6	Beezer	689	1,078	48.9	40.1	89.0	0.06	0.05
7	Benito	474	727	28.2	26.5	54.7	-0.01	0.03
8	Alta Celebrity	677	736	40.7	33.1	73.8	0.12	0.10
9	Heroic	535	1,039	26.8	35.3	62.1	-0.16	0.01
10	Inspire	787	780	50.7	38.1	88.8	0.21	0.14
11	Marpon 	523	469	27.5	18.7	46.2	0.10	0.04
12	McCoy	737	740	48.5	30.4	78.9	0.21	0.07
13	Peak Sixty	670	910	43.8	34.8	78.6	0.08	0.05
14	Pellegrino 	505	949	33.5	25.5	59.0	-0.05	-0.06
15	Pizazz	603	329	32.0	21.8	53.8	0.22	0.13
16	Powerbuck	612	1,034	31.7	28.8	60.5	-0.10	-0.06
17	Rodan Red	525	642	27.5	23.4	50.9	0.02	0.03
18	Snazzy	715	821	54.9	33.8	88.7	0.24	0.07
19	Thunderbird	531	652	35.9	31.3	67.2	0.11	0.11
20	Trophy	769	504	37.7	24.5	62.2	0.20	0.09
21	Voxpopuli 	734	678	37.9	31.7	69.6	0.12	0.11
22	Zyriak	648	411	34.3	21.1	55.4	0.21	0.09

 Recommended for Robotic Milking



Whilst every effort has been made to ensure the accuracy of all information contained in this catalogue, AI Services (NI) Ltd. accepts no responsibility whatsoever for any error, and without prejudice do not accept any liability for loss which may result from any error.

AI Services is the supplier / seller of semen and does not carry any responsibility or liability to the buyer in respect of loss arising from performance or fertility issues, or any other matters which are outside of the direct control of AI Services. The purchase of semen does not guarantee fertility or conception.

AI Services abides by the AHDB Dairy and Holstein UK established Code of Advertising.

PLI		
1	Inspire	787
2	Trophy	769
3	McCoy	737
4	Voxpopuli	734
5	Alta Snazzy	715
6	Beezer	689
7	Celebrity	677
8	Peak Sixty	670
9	Alabama	649
10	Zyriak	648

Milk Kg		
1	Beezer	1078
2	Heroic	1039
3	Powerbuck	1034
4	Pellegrino	949
5	Peak Sixty	910
6	Alabama	906
7	Alta Snazzy	821
8	Inspire	780
9	McCoy	740
10	Celebrity	736

Fat + Protein Kg		
1	Beezer	89.0
2	Inspire	88.8
3	Snazzy	88.7
4	Alabama	79.8
5	McCoy	78.9
6	Peak Sixty	78.6
7	Aerospace	75.9
8	Celebrity	73.8
9	Voxpopuli	69.6
10	Thunderbird	67.2

Fat %		
1	Aerospace	0.29
2	Alta Snazzy	0.24
3	Pizazz	0.22
4	Inspire	0.21
5	McCoy	0.21
6	Zyriak	0.21
7	Trophy	0.20
8	Alabama	0.13
9	Voxpopuli	0.12
10	Celebrity	0.12

Protein %		
1	Inspire	0.14
2	Pizazz	0.13
3	Aerospace	0.12
4	Thunderbird	0.11
5	Voxpopuli	0.11
6	Celebrity	0.10
7	Zyriak	0.09
8	Trophy	0.09
9	Alta Snazzy	0.07
10	McCoy	0.07

Type Merit		
1	Marpon	2.8
2	Benito	2.3
3	Rodan Red	2.2
4	Trophy	2.1
5	Celebrity	1.9
6	Heroic	1.8
7	Pellegrino	1.8
8	Thunderbird	1.6
9	Zyriak	1.6
10	Peak Sixty	1.5

Mammary		
1	Trophy	2.5
2	Pellegrino	2.5
3	Peak Sixty	2.1
4	Benito	2.0
5	Pizazz	1.7
6	Alabama	1.7
7	Celebrity	1.5
8	Zyriak	1.5
9	Marpon	1.4
10	Rodan Red	1.3

Feet & Legs		
1	Marpon	2.4
2	Benito	2.2
3	Trophy	2.0
4	Voxpopuli	1.8
5	Heroic	1.7
6	Rodan Red	1.7
7	Thunderbird	1.5
8	Zyriak	1.4
9	Celebrity	1.0
10	Alabama	1.0

Fertility		
1	Powerbuck	10.6
2	Trophy	9.7
3	Pizazz	5.9
4	Marpon	5.7
5	McCoy	5.6
6	Celebrity	4.6
7	Peak Sixty	3.5
8	Voxpopuli	2.8
9	Alabama	2.2
10	Inspire	1.8

Lifespan		
1	Trophy	174
2	Pizazz	125
3	Voxpopuli	122
4	Pellegrino	113
5	Inspire	104
6	Zyriak	104
7	Marpon	101
8	Voxpopuli	95
9	Powerbuck	92
10	Alabama	92

Somatic Cell Count		
1	Pellegrino	-22
2	Zyriak	-18
3	Voxpopuli	-17
4	Rodan Red	-16
5	Pizazz	-14
6	Powerbuck	-14
7	Aerospace	-13
8	Trophy	-9
9	Celebrity	-7
10	Benito	-7

Direct Calving Ease		
1	Alta Snazzy	-0.5
2	Powerbuck	-0.4
3	Benito	-0.4
4	Thunderbird	-0.4
5	Alabama	-0.4
6	Pellegrino	-0.3
7	Heroic	-0.2
8	Aerospace	0.0
9	Marpon	0.0
10	Peak Sixty	0.1

Assessing Inbreeding

A degree of inbreeding always occurs when animals related to one another are mated as a result of a concentration of the same genes. See table to the right for Inbreeding Levels.

Rule of Thumb

Commercial producers should avoid matings leading to an inbreeding level of greater than 6.25%

Mating

Inbreeding %

Sire/Daughter	25%
Full brother/Full sister	25%
Half brother/Half sister	12.5%
Grandsire/Granddaughter	12.5%
Grandson/Granddam	12.5%
Uncle/Niece	6.25%
Son/Granddaughter	6.25%
Daughter/Grandson	6.25%
Full cousins	6.25%
Grandson/Granddaughter	3.13%
Half cousins	3.13%

AEROSPACE

PEAK ALTAEROSPACE A1A2 KCBB BLF BYF CVF DPF POF RDF CDF HMWF	HB No	3252198055	AI Code	HO8188
	Beta Casein	A1A2	Source	USA
	Kappa Casein	BB	DOB	2022



- High ranking sire in both PLI and type
- 76 kg fat & protein
- Exceptional fat improvement @0.29%
- High wide rear udder attachment
- Improves teat length
- Suitable for robotic milking

Profit		
PLI	£616	67%
SCI	-£140	67%
ACI	£410	67%

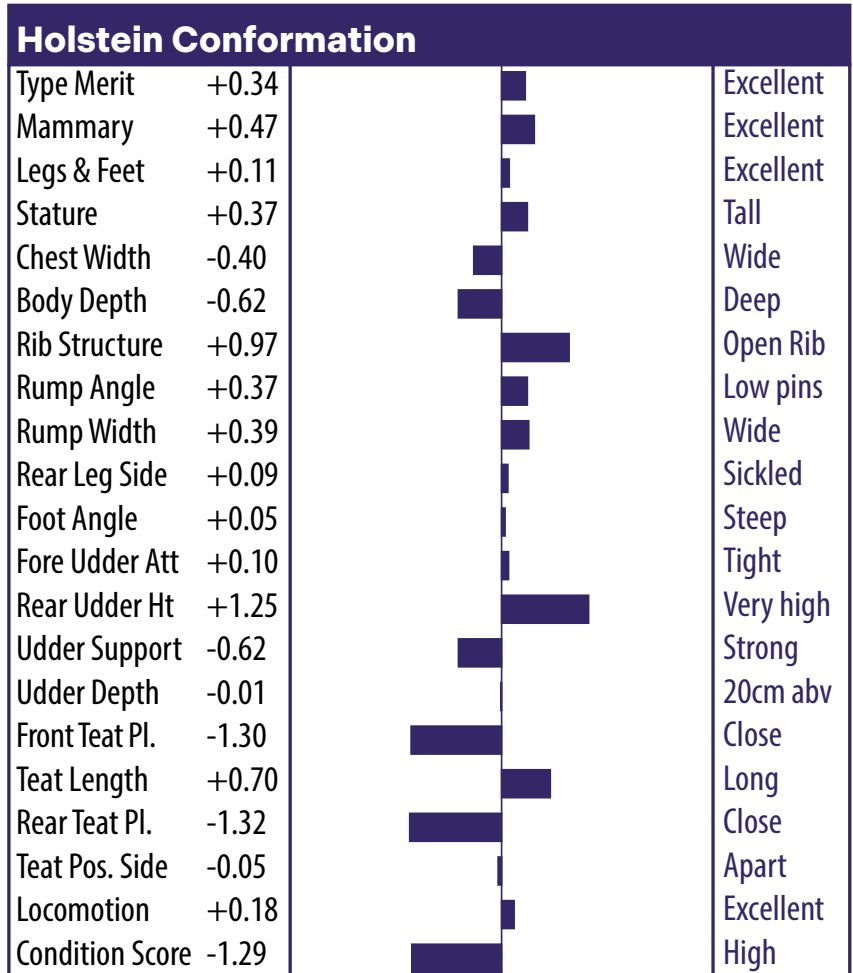
Exquisite X Jump Cut X Lionel

Production		
Milk	556 kg	73% rel
Fat	47.4 kg	0.29%
Protein	28.5 kg	0.12%

Sire: Peak Alta Exquisite
Dam: Peak Aromatic

Health & Fertility		
Fertility	-3.7	Non-Improver
Lifespan	49	Improver
Calving Ease	0	Easier
Healthy Cow	48	Improver
Somatic Cell	-13	Improver
Mastitis	0	Improver
TB Resistance	3.7	Improver
Enviro Cow	3.2	Improver

Management		
Lameness	2	Improver
Digital Derm	-0.1	Improver
Calf Survival	0.9	Improver
Gestation	-3	Shorter
Maintenance	-1	Larger
Body Cond	-1.29	Fatter
Temperament	0.15	Docile
Ease of Milk	0.73	Fast



Proof Source: April 2026.
UK Production, Health and Reproduction: AHDB Dairy.
Type: Holstein UK

ALABAMA

Alabama

HB No	FR5027781929	AI Code	
Beta Casein	A2A2	Source	France
Kappa Casein	BB	DOB	2025



- Exceptional production & type sire
- Excels in strength and rump width
- Superb locomotion
- Improves teat length

Profit

PLI	£649	72%
SCI	-£310	72%
ACI	£403	72%

Inspire PK X Powerstar X Wheelhouse

Production

Milk	906 kg	63% rel
Fat	48.3 kg	0.13%
Protein	31.5 kg	0.02%

Sire: Inspire

Dam: 327

Health & Fertility

Fertility	2.2	Improver
Lifespan	92	Improver
Calving Ease	1.8	Easier
Healthy Cow	123	Improver
Somatic Cell	-3	Improver
Mastitis	0.0	Improver
TB Resistance	2.8	Improver
Enviro Cow	3.0	Improver

Management

Lameness	0.29	Improver
Digital Derm	0.10	Non-Improver
Calf Survival	0.95	Improver
Gestation	-2.0	Shorter
Maintenance	18.2	Smaller
Body Cond	0.01	Fatter
Temperament	0.05	Docile
Ease of Milk	0.19	Easier

Holstein Conformation

Type Merit	+1.26	Excellent
Mammary	+1.68	Excellent
Legs & Feet	+1.01	Excellent
Stature	+1.42	Tall
Chest Width	+1.16	Wide
Body Depth	+0.92	Deep
Rib Structure	+1.31	Open Rib
Rump Angle	+1.09	Low pins
Rump Width	+2.29	Wide
Rear Leg Side	-0.35	Sickled
Foot Angle	+0.55	Steep
Fore Udder Att	+1.43	Tight
Rear Udder Ht	+1.55	Very high
Udder Support	+1.44	Strong
Udder Depth	+0.98	20cm abv
Front Teat Pl.	+0.98	Close
Teat Length	+0.12	Long
Rear Teat Pl.	+0.73	Close
Teat Pos. Side	+0.28	Apart
Locomotion	+0.87	Excellent
Condition Score	+0.01	High

BEEZER

T-SPRUCE PEAK BEEZER BLF BYF CVF DPF POF RDF CDF

HB No	65 3272622397	AI Code	HO8413
Beta Casein	A2A2	Source	USA
Kappa Casein	AB	DOB	2023



- 89 kg of combined fat & protein with 1,078 kg of milk
- Improved teat length
- Excellent locomotion
- Improves rump width angle

Profit

PLI	£689	66%
SCI	-£227	66%
ACI	£420	66%

Production

Milk	1078 kg	73% rel
Fat	48.9 kg	0.06%
Protein	40.1 kg	0.05%

Health & Fertility

Fertility	-2.1	Non-Improver
Lifespan	0	Improver
Calving Ease	0.8	Easier
Healthy Cow	19	Improver
Somatic Cell	-3	Improver
Mastitis	2	Improver
TB Resistance	1.9	Improver
Enviro Cow	3.4	Improver

Management

Lameness	1.4	Improver
Digital Derm	0.4	Improver
Calf Survival	0.9	Improver
Gestation	-2	Shorter
Maintenance	-1	Larger
Body Cond	0	Fatter
Temperament	1.19	Docile
Ease of Milk	0.23	Fast

Olympus x Taos x Lionel

Sire: Peak Olympus-Et

Dam: T-Spruce Taos 15384

Holstein Conformation

Type Merit	+1.11		Excellent
Mammary	+0.85		Excellent
Legs & Feet	+0.80		Excellent
Stature	+0.03		Tall
Chest Width	+0.19		Wide
Body Depth	-0.34		Deep
Rib Structure	+1.13		Open Rib
Rump Angle	+0.95		Low pins
Rump Width	+1.67		Wide
Rear Leg Side	+0.54		Sickled
Foot Angle	-0.38		Steep
Fore Udder Att	+0.30		Tight
Rear Udder Ht	+0.79		Very high
Udder Support	+0.24		Strong
Udder Depth	-0.57		20cm abv
Front Teat Pl.	+0.74		Close
Teat Length	-0.05		Long
Rear Teat Pl.	+0.96		Close
Teat Pos. Side	+0.40		Apart
Locomotion	+1.09		Excellent
Condition Score	-0.90		High

Proof Source: April 2026.
 UK Production, Health and Reproduction: AHDB Dairy.
 Type: Holstein UK

BENITO

SYNERGY PEAK ALTABENITO A2A2 KCBB BLF BYF CVF DPF RDF CDF HMWF	HB No	65 3283240502	AI Code	HO8434
	Beta Casein	A2A2	Source	USA
	Kappa Casein	BB	DOB	2024



- Over 2 points in type, mammary and leg & feet
- Top bull for improving locomotion @ +2.17
- Exciting pedigree
- Positive teat length

Profit

PLI	£474	67%
SCI	-£288	67%
ACI	£242	67%

Production

Milk	727 kg	73% rel
Fat	28.2 kg	-0.01%
Protein	26.5 kg	0.03%

Health & Fertility

Fertility	-0.6	Improver
Lifespan	43	Improver
Calving Ease	-0.4	Harder
Healthy Cow	98	Improver
Somatic Cell	-7	Improver
Mastitis	-1	Improver
TB Resistance	3.1	Improver
Enviro Cow	2	Improver

Management

Lameness	1.8	Improver
Digital Derm	0.3	Improver
Calf Survival	-0.6	Non-Improver
Gestation	1	Longer
Maintenance	15	Larger
Body Cond	0	Fatter
Temperament	1.08	Good
Ease of Milk	1.32	Fast

Pazzle X Perfect X Positive

Sire: Siemers Rz Pazzle 34954

Dam: Genosource Parfct Oriole

Holstein Conformation

Type Merit	+2.28		Excellent
Mammary	+2.02		Excellent
Legs & Feet	+2.20		Excellent
Stature	+1.24		Tall
Chest Width	+0.92		Wide
Body Depth	+1.15		Deep
Rib Structure	+1.58		Open Rib
Rump Angle	-0.87		Low pins
Rump Width	+1.45		Wide
Rear Leg Side	-0.22		Sickled
Foot Angle	+1.05		Steep
Fore Udder Att	+1.90		Tight
Rear Udder Ht	+1.78		Very high
Udder Support	+0.30		Strong
Udder Depth	+1.28		20cm abv
Front Teat Pl.	+0.36		Close
Teat Length	+0.04		Long
Rear Teat Pl.	-0.02		Close
Teat Pos. Side	+1.41		Apart
Locomotion	+2.17		Excellent
Condition Score	-0.49		High

ALTA CELEBRITY

HB No	65003292511308	AI Code	HO8791
Beta Casein	A2A2	Source	
Kappa Casein	BB	DOB	2024

PEAK ALTACELEBRITY



- New release sire
- All-round production & type sire
- Excels in body strength & rump width
- Positive daughter fertility

Profit		
PLI	£677	66%
SCI	-£179	66%
ACI	£446	66%

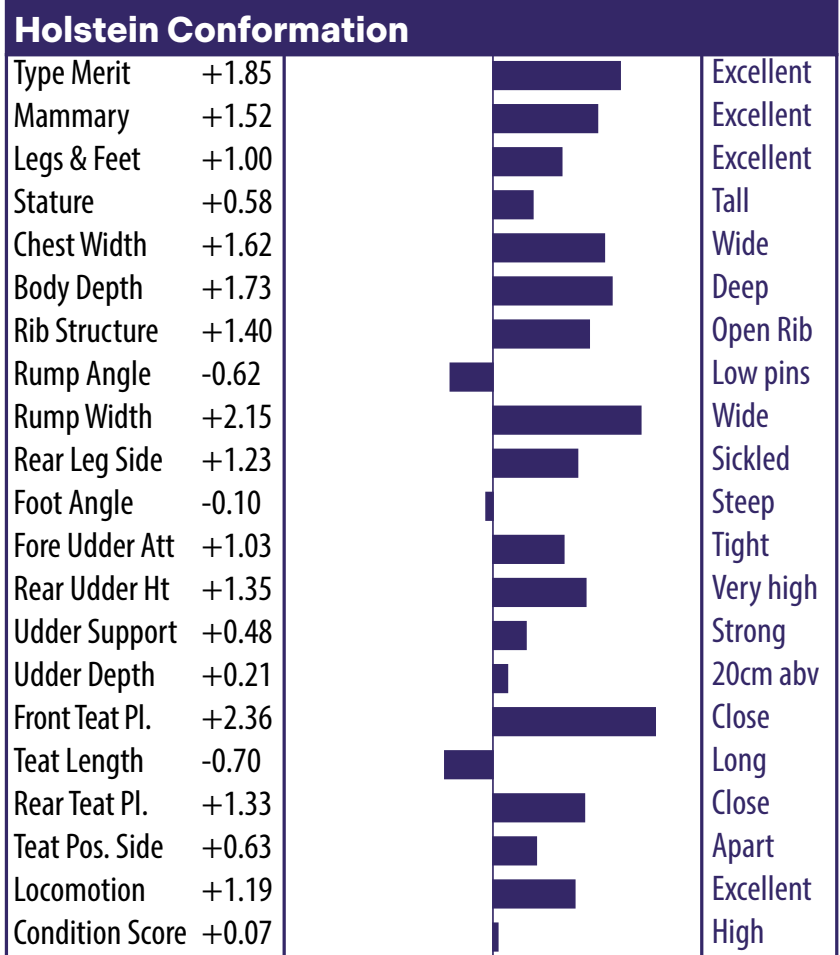
Altainspire X AltaWoodside X
AltaMagnifique

Production		
Milk	736 kg	73%
Fat	40.7 kg	0.12%
Protein	33.1 kg	0.10%

Sire: Peak Ch Altainspire
Dam: Peak Megalight

Health & Fertility		
Fertility	4.6	Improver
Lifespan	61	Improver
Calving Ease	0.2	Easier
Healthy Cow	130	Improver
Somatic Cell	-7	Improver
Mastitis	0	Improver
TB Resistance	3	Improver
Enviro Cow	3	Improver

Management		
Lameness	1.2	Improver
Digital Derm	0.1	Non-Improver
Calf Survival	0.8	Improver
Gestation	-3	Shorter
Maintenance	13	Smaller
Body Cond	0	Fatter
Temperament	0.06	Good
Ease of Milk	0.41	Fast



Proof Source: April 2026.
UK Production, Health and Reproduction: AHDB Dairy.
Type: Holstein UK

HEROIC

DUCKETT HEROIC BYF CVF POF RDF CDF

HB No	65 3260843013	AI Code	HO7891
Beta Casein	A2A2	Source	USA
Kappa Casein	AB	DOB	2022



- Top production bull
- Maternal granddam EX96
- 9 Generations of VG & EX dams
- Excellent legs and feet with good locomotion
- Positive in all management traits
- Exceptional type sire

Profit

PLI	£535	67%
SCI	-£211	67%
ACI	£314	67%

Production

Milk	1039 kg	73% rel
Fat	26.8 kg	-0.16%
Protein	35.3 kg	0.01%

Health & Fertility

Fertility	1.3	Improver
Lifespan	34	Improver
Calving Ease	-0.2	Harder
Healthy Cow	86	Improver
Somatic Cell	1	Improver
Mastitis	0	Improver
TB Resistance	1.7	Improver
Enviro Cow	2.3	Improver

Management

Lameness	1.2	Improver
Digital Derm	0.3	Improver
Calf Survival	1.1	Improver
Gestation	-2	Shorter
Maintenance	3	Larger
Body Cond	0	Fatter
Temperament	0.79	Good
Ease of Milk	1.4	Fast

Esquire X Perfect X King Doc

Sire: Sandy-Valley Esquire

Dam: Duckett Perfect Hallie

Holstein Conformation

Type Merit	+1.84		Excellent
Mammary	+1.21		Excellent
Legs & Feet	+1.73		Excellent
Stature	+0.10		Tall
Chest Width	+0.82		Wide
Body Depth	+0.72		Deep
Rib Structure	+1.49		Open Rib
Rump Angle	-1.59		Low pins
Rump Width	+1.41		Wide
Rear Leg Side	-0.10		Sickled
Foot Angle	+0.09		Steep
Fore Udder Att	+0.73		Tight
Rear Udder Ht	+0.67		Very high
Udder Support	+0.72		Strong
Udder Depth	+0.03		20cm abv
Front Teat Pl.	+0.83		Close
Teat Length	+0.60		Long
Rear Teat Pl.	+0.95		Close
Teat Pos. Side	+1.05		Apart
Locomotion	+1.81		Excellent
Condition Score	-0.99		High

INSPIRE

PEAK CH ALTAINSPIRE A2A2 KCBB BLF BYF CVF DPF MFF POF RDF CDF HH5C

HB No	65 3263337318	AI Code	HO8077
Beta Casein	A2A2	Source	USA
Kappa Casein	BB	DOB	2023



- 89 kg of combined fat & protein with positive percentages
- Inspire is a top component specialist
- Excels in chest and body traits
- Improves health & fertility traits

Profit		
PLI	£787	67%
SCI	-£183	67%
ACI	£534	67%

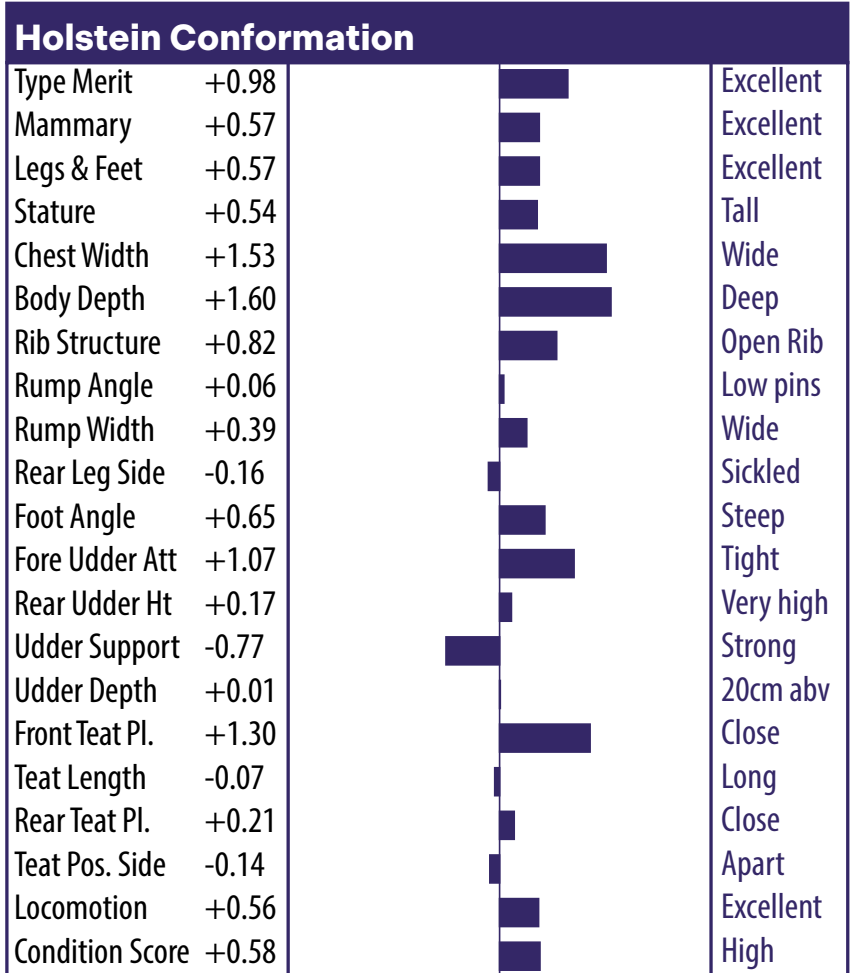
Exquisite X Jump Cut X Lionel

Production		
Milk	780 kg	73% rel
Fat	50.7 kg	0.21%
Protein	38.1 kg	0.14%

Sire: Peak Powerstar
Dam: Peak Legendary

Health & Fertility		
Fertility	1.8	Improver
Lifespan	104	Improver
Calving Ease	0.4	Easier
Healthy Cow	111	Improver
Somatic Cell	-6	Improver
Mastitis	0	Improver
TB Resistance	3.3	Improver
Enviro Cow	3.9	Improver

Management		
Lameness	0.5	Improver
Digital Derm	-0.2	Improver
Calf Survival	1.4	Improver
Gestation	-1	Shorter
Maintenance	14	Larger
Body Cond	0	Leaner
Temperament	-0.9	Docile
Ease of Milk	-0.16	Harder



Proof Source: April 2026.
UK Production, Health and Reproduction: AHDB Dairy.
Type: Holstein UK

MARPON

KOEPPON MARPPON A2A2 KCBB BLF BYF CVF DPF POF RDF VRF CDF

HB No	63 571815689	AI Code	HO8604
Beta Casein	A2A2	Source	Germany
Kappa Casein	BB	DOB	2019



- Exciting new daughter proven sire with 1244 milking in 352 herds
- No 3 UK International daughter proven sire
- Suitable for robotic milking
- Exceptional type improvement @ 2.8
- Top sire for excellent legs & feet with high locomotion

Profit

PLI	£523	83%
SCI	£11	83%
ACI	£362	83%

Production

Milk	469 kg	86% rel
Fat	27.5 kg	0.10%
Protein	18.7 kg	0.04%

Health & Fertility

Fertility	5.7	Improver
Lifespan	101	Improver
Calving Ease	0	Harder
Healthy Cow	185	Improver
Somatic Cell	-6	Improver
Mastitis	-2	Improver
TB Resistance	0.8	Improver
Enviro Cow	2.3	Improver

Management

Lameness	2	Improver
Digital Derm	0.5	Improver
Calf Survival	-0.1	Non-Improver
Gestation	-1	Shorter
Maintenance	-3	Smaller
Body Cond	0	Fatter
Temperament	0.65	Good
Ease of Milk	-0.04	Easier

Martin X Yoder X Belinda

Sire: Midwolder Martin

Dam: Koepon Band Classy 402

Holstein Conformation

Type Merit	+2.81		Excellent
Mammary	+1.41		Excellent
Legs & Feet	+2.39		Excellent
Stature	+0.01		Tall
Chest Width	+0.20		Wide
Body Depth	+0.33		Deep
Rib Structure	+2.41		Open Rib
Rump Angle	+0.78		Low pins
Rump Width	-0.31		Wide
Rear Leg Side	+1.67		Sickled
Foot Angle	-0.99		Steep
Fore Udder Att	+1.54		Tight
Rear Udder Ht	+1.45		Very high
Udder Support	+0.21		Strong
Udder Depth	+1.26		20cm abv
Front Teat Pl.	+1.37		Close
Teat Length	+1.58		Long
Rear Teat Pl.	-0.09		Close
Teat Pos. Side	-0.24		Apart
Locomotion	+2.88		Excellent
Condition Score	-0.32		High

Proof Source: April 2026.

UK Production, Health and Reproduction: AHDB Dairy.

Type: Holstein UK

MCCOY

PEAK ALTAMCCOY A2A2 KCAA BLF BYF CVF DPF POF RDF CDF HMWF

HB No	65 3269404970	AI Code	HO8247
Beta Casein	A2A2	Source	USA
Kappa Casein	AA	DOB	2023



- Exciting new release sire from the Peak breeding program
- Tremendous fat increase in both kg & percentages
- Excellent health and management traits
- Reduces stature with increased chest width

Profit		
PLI	£737	66% rel
SCI	-£30	66%
ACI	£517	66%

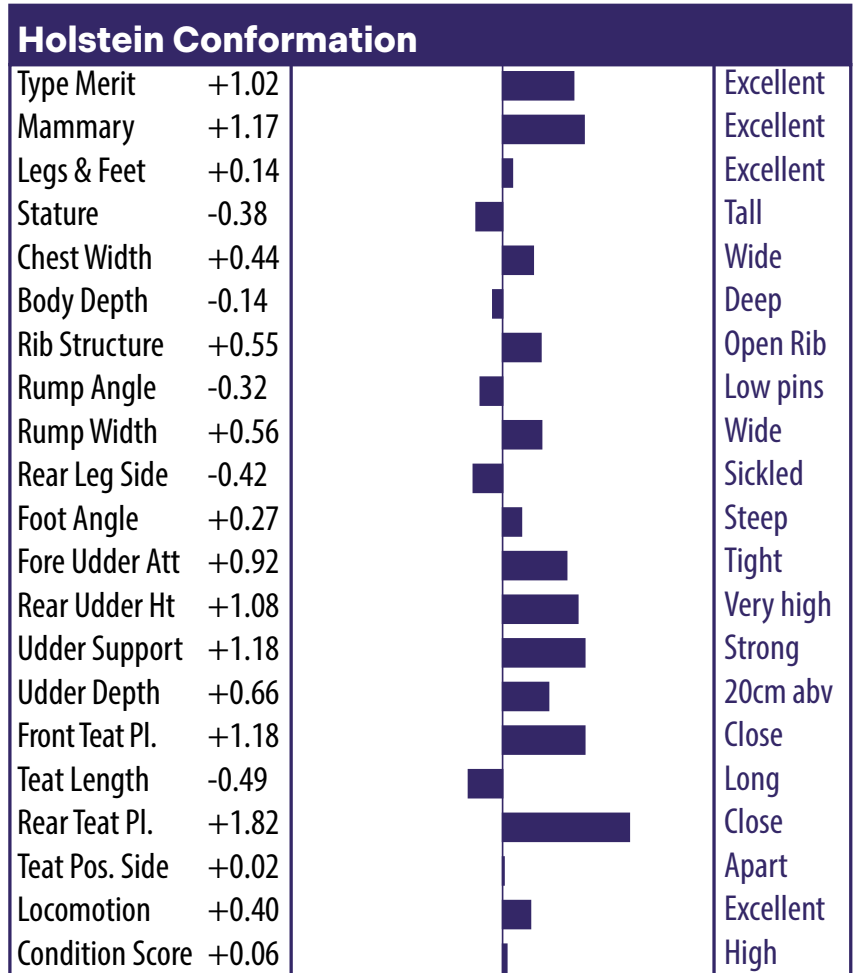
Janus X Magnifique X Fastball

Production		
Milk	740 kg	73%
Fat	48.5 kg	0.21%
Protein	30.4 kg	0.07%

Sire: Peak Alta Janus
Dam: Peak Larissa

Health & Fertility		
Fertility	5.6	Improver
Lifespan	82	Improver
Calving Ease	0.3	Easier
Healthy Cow	134	Improver
Somatic Cell	-6	Improver
Mastitis	-1	Improver
TB Resistance	4.5	Improver
Enviro Cow	3.6	Improver

Management		
Lameness	0.5	Improver
Digital Derm	-0.3	Non-Improver
Calf Survival	0.9	Improver
Gestation	-4	Shorter
Maintenance	-2	Smaller
Body Cond	0	Leaner
Temperament	-0.12	Docile
Ease of Milk	-0.47	Slower



Proof Source: April 2026.
UK Production, Health and Reproduction: AHDB Dairy.
Type: Holstein UK

PEAK SIXTY

PEAK SIXTY

HB No	65 3283240421	AI Code	
Beta Casein	A1A2	Source	
Kappa Casein	AB	DOB	2023



- Top production sire
- Outstanding chest and rump width
- Superb udders
- Positive daughter fertility

Profit

PLI	£670	66%
SCI	-£163	66%
ACI	£436	66%

AltaZerogravity X Powerstar X
AltaMagnifique

Production

Milk	910 kg	73% rel
Fat	43.8 kg	0.08%
Protein	34.8 kg	0.05%

Sire: Peak Alta Zero Gravity

Dam: Peak 86851

Health & Fertility

Fertility	3.5	Improver
Lifespan	27	Improver
Calving Ease	0.1	Easier
Healthy Cow	87	Improver
Somatic Cell	-1	Improver
Mastitis	1.0	Improver
TB Resistance	3.2	Improver
Enviro Cow	3.1	Improver

Management

Lameness	0.6	Improver
Digital Derm	-0.3	Non-Improver
Calf Survival	2.1	Improver
Gestation	-2	Shorter
Maintenance	5	Smaller
Body Cond	-0.41	Fatter
Temperament	1.02	Docile
Ease of Milk	0.01	Easier

Holstein Conformation

Type Merit	+1.46		Excellent
Mammary	+2.06		Excellent
Legs & Feet	-0.06		Excellent
Stature	+0.05		Tall
Chest Width	+1.01		Wide
Body Depth	+0.64		Deep
Rib Structure	+1.19		Open Rib
Rump Angle	-1.53		Low pins
Rump Width	+2.03		Wide
Rear Leg Side	+1.1		Sickled
Foot Angle	-0.55		Steep
Fore Udder Att	+1.83		Tight
Rear Udder Ht	+1.41		Very high
Udder Support	+0.08		Strong
Udder Depth	+0.89		20cm abv
Front Teat Pl.	+1.46		Close
Teat Length	-0.27		Long
Rear Teat Pl.	+0.53		Close
Teat Pos. Side	-0.06		Apart
Locomotion	+0.34		Excellent
Condition Score	-0.41		High

Proof Source: April 2026.

UK Production, Health and Reproduction: AHDB Dairy.

Type: Holstein UK

PELEGRINO

PELEGRINO BLF BYF CVF MFF

HB No	71 7253843259	AI Code	HO6761
Beta Casein	A1A1	Source	France
Kappa Casein	AA	DOB	2019



- Top udder sire of 2.64
- High production
- Healthy cow index £174
- Fertility index
- Lifespan +113 days
- Tremendous milking daughters

Profit

PLI	£505	94%
SCI	-£312	94%
ACI	£309	94%

Production

Milk	949 kg	99% rel
Fat	33.5 kg	-0.05%
Protein	25.5 kg	-0.06%

Health & Fertility

Fertility	0.9	Improver
Lifespan	113	Improver
Calving Ease	-0.3	Harder
Healthy Cow	174	Improver
Somatic Cell	-22	Improver
Mastitis	-2	Improver
TB Resistance	-0.4	Non-Improver
Enviro Cow	2.1	Improver

Management

Lameness	-3.4	Non-Improver
Digital Derm	-0.4	Improver
Calf Survival	3.5	Improver
Gestation	-2	Shorter
Maintenance	16	Larger
Body Cond	-0.48	Leaner
Temperament	1.35	Docile
Ease of Milk	-0.82	Slower

Topnotch X Router X Muscadet

Sire: Progenesis Topnotch

Dam: Westcoast Router Jabel

Holstein Conformation

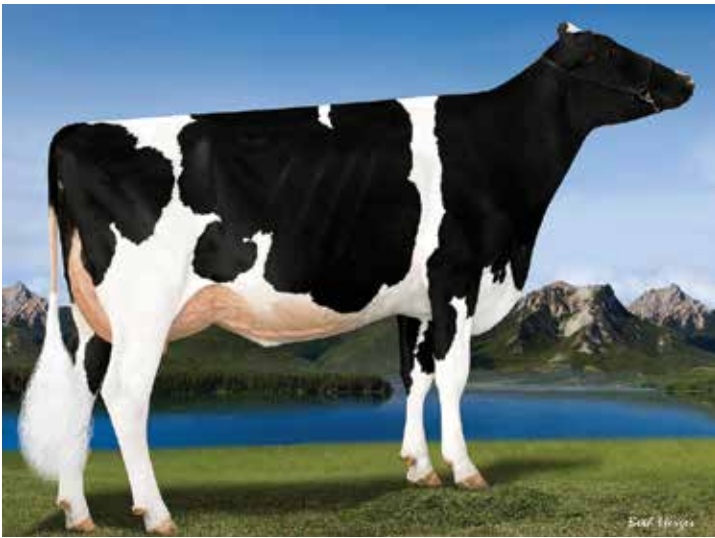
Type Merit	+1.80	Excellent
Mammary	+2.49	Excellent
Legs & Feet	+0.94	Excellent
Stature	+1.69	Tall
Chest Width	+0.62	Wide
Body Depth	+1.10	Deep
Rib Structure	+2.00	Open Rib
Rump Angle	+0.95	Low pins
Rump Width	+1.81	Wide
Rear Leg Side	-0.16	Sickled
Foot Angle	-0.81	Steep
Fore Udder Att	+1.72	Tight
Rear Udder Ht	+2.58	Very high
Udder Support	+1.73	Strong
Udder Depth	+1.53	20cm abv
Front Teat Pl.	+0.32	Close
Teat Length	+0.20	Long
Rear Teat Pl.	+0.36	Close
Teat Pos. Side	+0.09	Apart
Locomotion	+0.64	Excellent
Condition Score	-0.48	High

Proof Source: April 2026.
UK Production, Health and Reproduction: AHDB Dairy.
Type: Holstein UK

PIZZAZZ

PEAK ALTAPIZZAZZ A2A2 KCBB BLF BYF CVF DPF POF RDF CDF HMWF

HB No	65 3251555560	AI Code	HO8190
Beta Casein	A2A2	Source	USA
Kappa Casein	BB	DOB	2022



- All-round production and component sire
- Increases longevity
- Lowers stature
- Excellent rump width
- Impressively indexed for feed efficiency

Profit		
PLI	£603	67%
SCI	£103	67%
ACI	£	67%

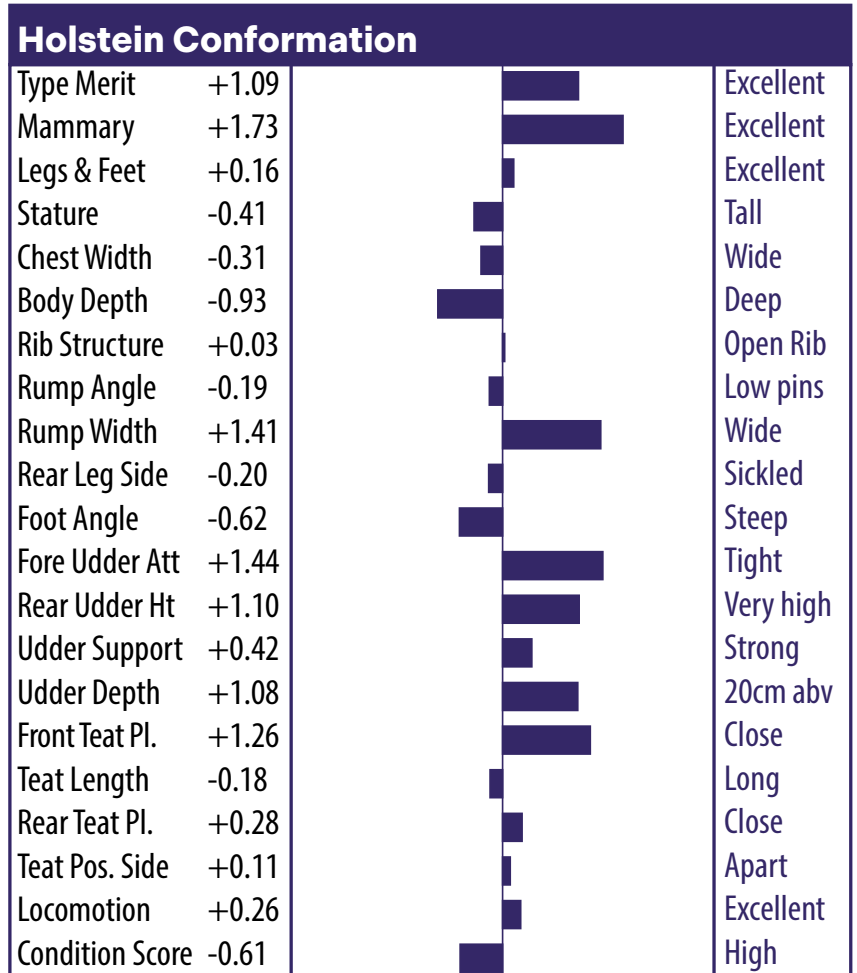
Altaovertake X Incredible X Pursuit

Production		
Milk	329 kg	73% rel
Fat	32.0 kg	0.22%
Protein	21.8 kg	0.13%

Sire: Ladys-Manor Altaovertake
Dam: Peak Zaida

Health & Fertility		
Fertility	5.9	Improver
Lifespan	125	Improver
Calving Ease	1.1	Easier
Healthy Cow	176	Improver
Somatic Cell	-14	Improver
Mastitis	-1	Improver
TB Resistance	2.3	Improver
Enviro Cow	2.9	Improver

Management		
Lameness	1.8	Improver
Digital Derm	0.4	Improver
Calf Survival	-0.6	Improver
Gestation	-1	Shorter
Maintenance	-6	Smaller
Body Cond		Leaner
Temperament	-0.38	Defiant
Ease of Milk	-0.18	Easier



Proof Source: April 2026.
UK Production, Health and Reproduction: AHDB Dairy.
Type: Holstein UK

POWERBUCK

PEAK ALTAPOWERBUCK

HB No	65 3213001199	AI Code	HO7219
Beta Casein	A1A2	Source	
Kappa Casein	AB	DOB	2020



- High milk sire
- Reduces stature
- Excellent chest width
- Tremendous daughter fertility
- Excellent local milking daughters

Profit		
PLI	£612	84%
SCI	-£27	84%
ACI	£437	84%

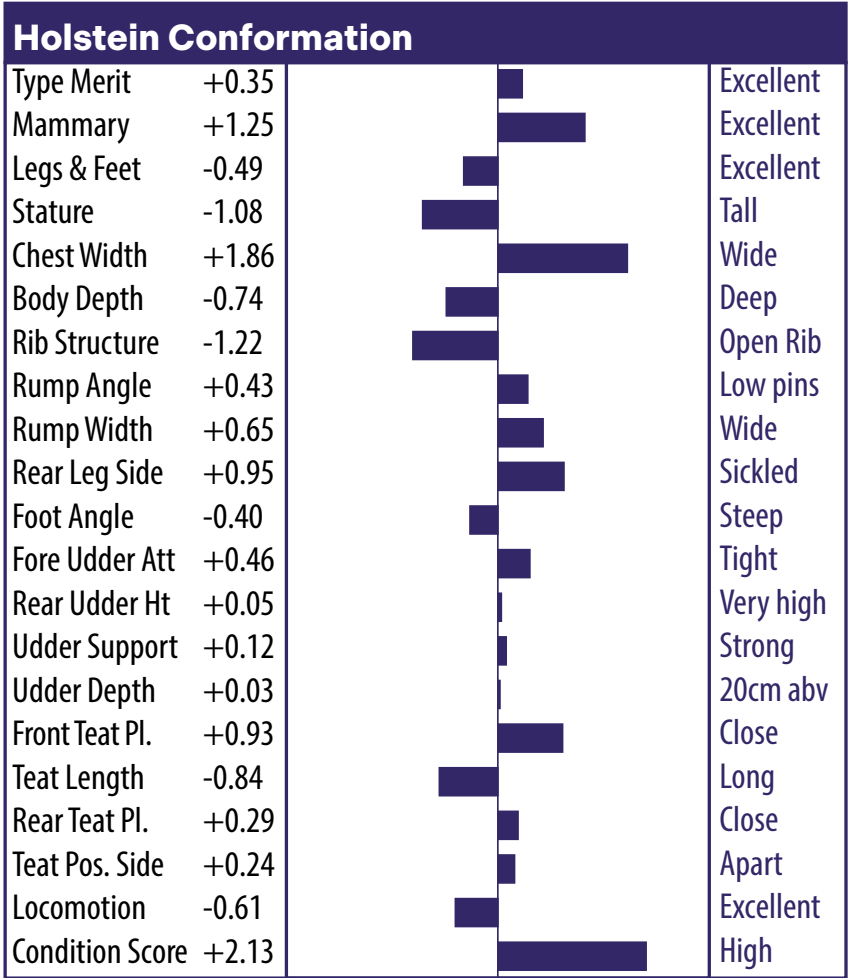
Alta Tiki X Pursuit X Medley

Production		
Milk	1034 kg	96% rel
Fat	31.7 kg	-0.10%
Protein	28.8 kg	-0.06%

Sire: Peak Alta Tiki
Dam: Moira

Health & Fertility		
Fertility	10.6	Improver
Lifespan	92	Improver
Calving Ease	-0.4	Harder
Healthy Cow	194	Improver
Somatic Cell	-14	Improver
Mastitis	-2	Improver
TB Resistance	2.7	Non-Improver
Enviro Cow	2.4	Improver

Management		
Lameness	0.5	Non-Improver
Digital Derm	-0.3	Improver
Calf Survival	1.3	Improver
Gestation	-2.0	Shorter
Maintenance	3	Larger
Body Cond	0.0	Leaner
Temperament	1.29	Docile
Ease of Milk	0.43	Harder



Proof Source: April 2026.
UK Production, Health and Reproduction: AHDB Dairy.
Type: Holstein UK

RODAN RED

TRENT-WAY ALTARODAN-RED BYF CVF POF CDF HMWF

HB No	65 3261835820	AI Code	HO8330
Beta Casein	A1A2	Source	USA
Kappa Casein	BB	DOB	2023



- Outstanding new red & white Holstein sire
- High type sire with production to match
- Snugly attached udders
- Improves chest and rump width in his daughters

Profit

PLI	£525	68%
SCI	-£106	68%
ACI	£320	68%

Production

Milk	642 kg	74% rel
Fat	27.5 kg	0.02%
Protein	23.4 kg	0.03%

Health & Fertility

Fertility	-1.7	Non-Improver
Lifespan	82	Improver
Calving Ease	0.3	Harder
Healthy Cow	134	Improver
Somatic Cell	-16	Improver
Mastitis	-1	Improver
TB Resistance	0.1	Improver
Enviro Cow	2.5	Improver

Management

Lameness	0.4	Improver
Digital Derm	0.3	Improver
Calf Survival	2.4	Improver
Gestation	-2	Shorter
Maintenance	1	Larger
Body Cond	0	Fatter
Temperament	1.41	Good
Ease of Milk	0.95	Fast

Ranger-Red X Parfect X AltaAltuve Rc

Sire: 3star Oh Ranger-Red

Dam: Trent-Way Essay

Holstein Conformation

Type Merit	+2.22	Excellent
Mammary	+1.27	Excellent
Legs & Feet	+1.72	Excellent
Stature	-0.11	Tall
Chest Width	+0.80	Wide
Body Depth	+0.57	Deep
Rib Structure	+1.63	Open Rib
Rump Angle	+0.78	Low pins
Rump Width	+1.33	Wide
Rear Leg Side	+1.27	Sickled
Foot Angle	-0.71	Steep
Fore Udder Att	-0.03	Tight
Rear Udder Ht	+1.29	Very high
Udder Support	+1.54	Strong
Udder Depth	-0.54	20cm abv
Front Teat Pl.	+1.73	Close
Teat Length	-0.02	Long
Rear Teat Pl.	+1.31	Close
Teat Pos. Side	+0.96	Apart
Locomotion	+2.08	Excellent
Condition Score	-0.07	High

Proof Source: April 2026.

UK Production, Health and Reproduction: AHDB Dairy.

Type: Holstein UK

ALTA SNAZZY

ALTASNAZZY A2A2 KCAA BLF BYF CVF DPF POF RDF CDF HMWF	HB No	65 3242815743	AI Code	H08273
	Beta Casein	A2A2	Source	USA
	Kappa Casein	AA	DOB	2023



- Exciting new release sire
- Exceptional components
- 89 kg combined fat & protein
- All-round type improvement

Profit		
PLI	£715	67%
SCI	-£158	67%
ACI	£445	67%

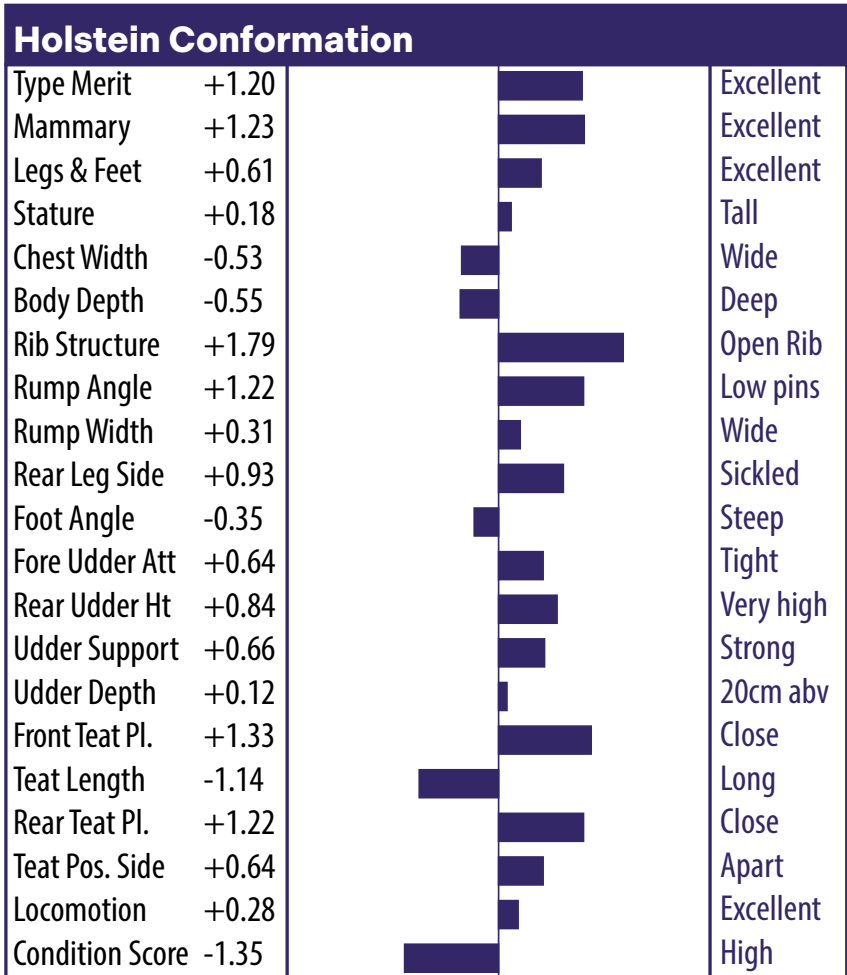
SHEEPSTER X GAMEDAY X LEGACY

Production		
Milk	821 kg	73% rel
Fat	54.9 kg	0.24%
Protein	33.8 kg	0.07%

Sire: OCD TROOPER SHEEPSTER
Dam: PEN-COL GAMEDAY GLAMOUR

Health & Fertility		
Fertility	-3.6	Improver
Lifespan	40	Improver
Calving Ease	-0.5	Easier
Healthy Cow	39	Improver
Somatic Cell	-5	Improver
Mastitis	1	Improver
TB Resistance	-0.1	Improver
Enviro Cow	3.8	Improver

Management		
Lameness	2.8	Improver
Digital Derm	0.3	Non-Improver
Calf Survival	1	Improver
Gestation	-1	Shorter
Maintenance	-5	Smaller
Body Cond	0	Fatter
Temperament	0.34	Good
Ease of Milk	0.95	Fast



Proof Source: April 2026.
UK Production, Health and Reproduction: AHDB Dairy.
Type: Holstein UK

TROPHY

TROPHY A2A2 KCAA BLF BYF CVF CDF

HB No	60 365421470	AI Code	HO8303
Beta Casein	A2A2	Source	Germany
Kappa Casein		DOB	2023



- Trophy scores over 2 points on type, udders, legs & feet
- Exceptional high values for all health traits
- Milk component specialist
- 11 generations of VG and excellent dams

Profit

PLI	£769	67%
SCI	£143	67%
ACI	£579	67%

Production

Milk	504 kg	73% rel
Fat	37.7 kg	0.20%
Protein	24.5 kg	0.09%

Health & Fertility

Fertility	9.7	Improver
Lifespan	174	Improver
Calving Ease	0.7	Easier
Healthy Cow	281	Improver
Somatic Cell	-9	Improver
Mastitis	0	Improver
TB Resistance	3.6	Improver
Enviro Cow	3.5	Improver

Management

Lameness	2.3	Improver
Digital Derm	0.4	Improver
Calf Survival	2.5	Improver
Gestation	-2	Shorter
Maintenance	-2	Smaller
Body Cond	0	Fatter
Temperament	-0.75	Poor
Ease of Milk	0.01	Fast

Trooper X Spot Lite X Renegade

Sire: Plain-Knoll Renegad Trooper

Dam: Penn-England Barb 17906

Holstein Conformation

Type Merit	+2.09	Excellent
Mammary	+2.54	Excellent
Legs & Feet	+2.04	Excellent
Stature	-0.36	Tall
Chest Width	+0.25	Wide
Body Depth	-1.45	Deep
Rib Structure	-0.34	Open Rib
Rump Angle	-1.61	Low pins
Rump Width	-1.22	Wide
Rear Leg Side	-0.61	Sickled
Foot Angle	+1.23	Steep
Fore Udder Att	+2.47	Tight
Rear Udder Ht	+1.70	Very high
Udder Support	+0.73	Strong
Udder Depth	+2.14	20cm abv
Front Teat Pl.	+1.26	Close
Teat Length	-0.46	Long
Rear Teat Pl.	+0.98	Close
Teat Pos. Side	+0.31	Apart
Locomotion	+2.01	Excellent
Condition Score	+0.94	High

THUNDERBIRD

HB No	65 3250026269	AI Code	HO8183
Beta Casein	A2A2	Source	USA
Kappa Casein	BB	DOB	2023

PEAK ALTATHUNDERBIRD A2A2 KCBB BLF BYF CVF DPF POF RDF CDF HMWF



- Balanced production with type
- Exciting pedigree
- Tremendous strength in both chest and rump
- Positive components
- Positive teat length
- Recommended for improving locomotion

Profit		
PLI	£531	68%
SCI	-£292	68%
ACI	£317	68%

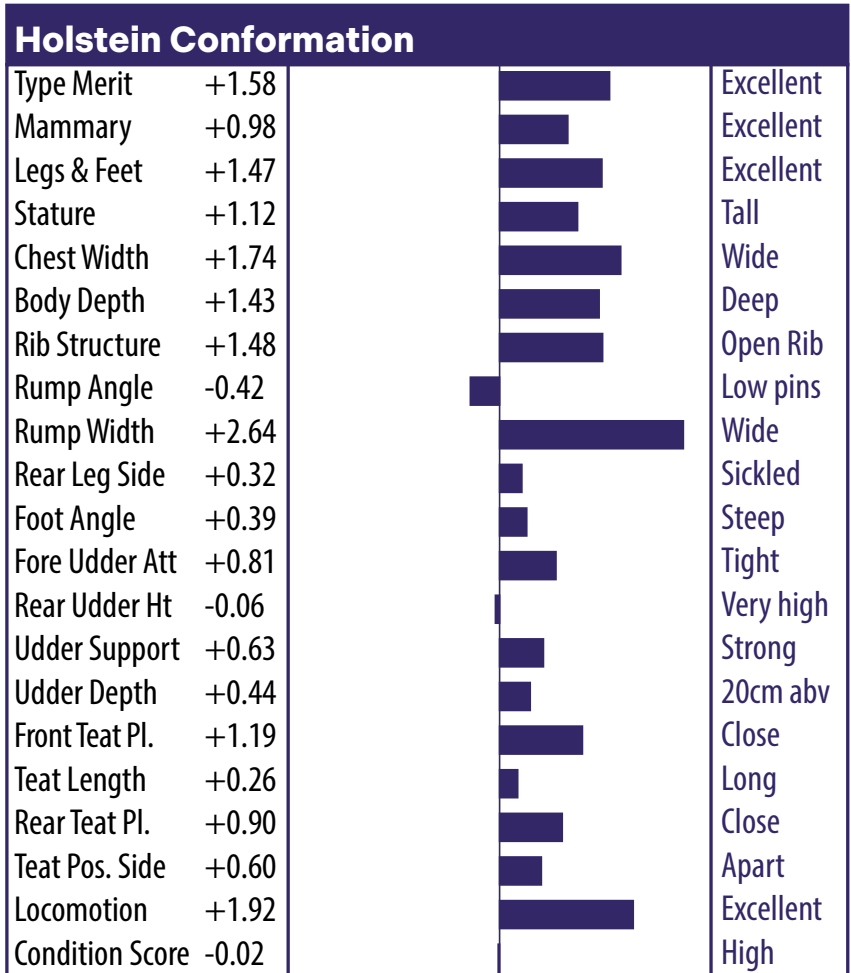
Parfect X Magnifique X Zazzle

Production		
Milk	652 kg	74% rel
Fat	35.9 kg	0.11%
Protein	31.3 kg	0.11%

Sire: Siemers Rengd Parfect
Dam: Peak Legendary

Health & Fertility		
Fertility	0.6	Improver
Lifespan	18	Improver
Calving Ease	-0.4	Harder
Healthy Cow	48	Improver
Somatic Cell	2	Improver
Mastitis	0	Improver
TB Resistance	3.2	Improver
Enviro Cow	2.3	Improver

Management		
Lameness	0	Improver
Digital Derm	-0.2	Improver
Calf Survival	0.3	Non-Improver
Gestation	-2	Shorter
Maintenance	19	Larger
Body Cond	-0.06	Fatter
Temperament	0.15	Good
Ease of Milk	1.28	Fast



Proof Source: April 2026.
UK Production, Health and Reproduction: AHDB Dairy.
Type: Holstein UK

ZYRIAK

ZYRIAK A1A1 KCAB BLF BYF CVF CDF

HB No	60 1406872018	AI Code	HO8304
Beta Casein		Source	Germany
Kappa Casein		DOB	2023



- Elite type sire with exceptional milk quality
- Improves legs and feet with excellent locomotion
- Low maintenance score with improved longevity
- Excels in all health & fertility traits

Profit

PLI	£648	67%
SCI	£62	67%
ACI	£449	67%

Production

Milk	411 kg	73% rel
Fat	34.3 kg	0.21%
Protein	21.1 kg	0.09%

Health & Fertility

Fertility	1.2	Improver
Lifespan	104	Improver
Calving Ease	0.5	Easier
Healthy Cow	186	Improver
Somatic Cell	-18	Improver
Mastitis	-1	Improver
TB Resistance	1.7	Improver
Enviro Cow	3.1	Improver

Management

Lameness	3.1	Improver
Digital Derm	0.5	Non-Improver
Calf Survival	2.3	Improver
Gestation	-1	Shorter
Maintenance	-6	Smaller
Body Cond	0	Fatter
Temperament	0.56	Good
Ease of Milk	0.23	Fast

Proof Source: April 2026.
UK Production, Health and Reproduction: AHDB Dairy.
Type: Holstein UK

Zythos X Gameday X Legacy

Sire: Badger S-S-I Taos Zythos

Dam: Kings-Ransom Gameday Devy

Holstein Conformation

Type Merit	+1.56		Excellent
Mammary	+1.45		Excellent
Legs & Feet	+1.42		Excellent
Stature	-0.48		Tall
Chest Width	-0.11		Wide
Body Depth	-1.13		Deep
Rib Structure	-0.04		Open Rib
Rump Angle	-0.17		Low pins
Rump Width	+0.40		Wide
Rear Leg Side	-0.16		Sickled
Foot Angle	+0.06		Steep
Fore Udder Att	+1.09		Tight
Rear Udder Ht	+0.88		Very high
Udder Support	+0.74		Strong
Udder Depth	+0.68		20cm abv
Front Teat Pl.	+0.56		Close
Teat Length	+0.18		Long
Rear Teat Pl.	+0.60		Close
Teat Pos. Side	+0.11		Apart
Locomotion	+1.20		Excellent
Condition Score	+0.76		High

VOXPOPULI

Voxpopuli

HB No	FR2919139304	AI Code	
Beta Casein		Source	
Kappa Casein		DOB	2024



- Double digit fat & protein improver
- Excellent feet & legs with high locomotion score
- Suitable for robotic milking
- Outcross Pedigree

Profit		
PLI	£734	73%
SCI	-£79	73%
ACI	£498	73%

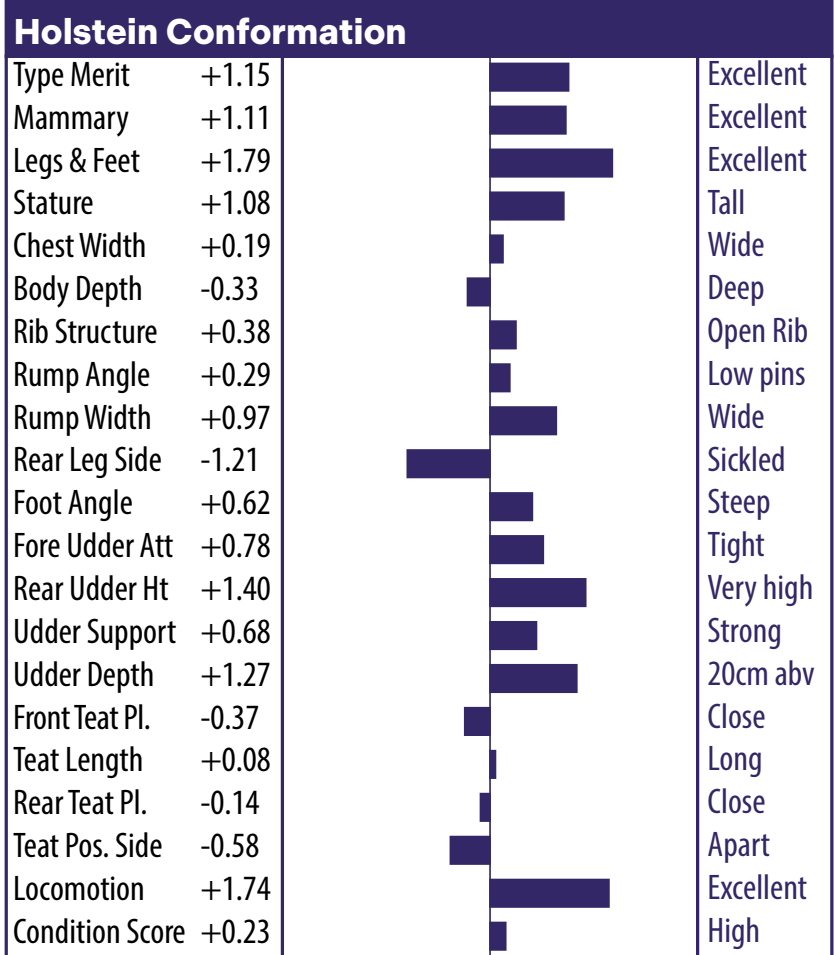
Radiowave x Royalflush x Discjockey

Production		
Milk	678 kg	79% rel
Fat	37.9 kg	0.12%
Protein	31.7 kg	0.11%

Sire: Radiowave
Dam: Taquine

Health & Fertility		
Fertility	2.8	Improver
Lifespan	122	Improver
Calving Ease	0.3	Easier
Healthy Cow	120	Improver
Somatic Cell	-22	Improver
Mastitis	-2.0	Improver
TB Resistance	1.2	Improver
Enviro Cow	3.2	Improver

Management		
Lameness	2.65	Improver
Digital Derm	0.74	Non-Improver
Calf Survival	1.20	Improver
Gestation	-2.0	Shorter
Maintenance	10.3	Smaller
Body Cond	0.23	Fatter
Temperament	1.05	Docile
Ease of Milk	-0.1	Easier



Proof Source: April 2026.
UK Production, Health and Reproduction: AHDB Dairy.
Type: Holstein UK

Beef Summer 2026

Your trusted guide to the best in beef genetics

Since 1988, AI Services has worked side by side with Northern Ireland's farmers. Proudly farmer-owned and supported by over 2,500 shareholders, we are built by producers, families, and co-operatives who understand what farming really demands.

That's what sets us apart. We're not driven by profit first decisions. Everything we do is focused on delivering the best outcomes for your herd, your business, and your future.

This year marks a major milestone with the opening of our new SMART Stud facility—the largest investment in our history. It strengthens our control over genetic quality, health standards, and semen production, delivering world-class genetics right here in Northern Ireland.

Genetics are our foundation, but service is our strength. Our local Breeding Consultants are on the ground, offering practical, tailored support to help maximise herd performance.



Your service
Your sires
Your success

ROCKET

Thrunton Rocket

HB No: UK106935301282

Aberdeen Angus

DOB: 04/06/2011



- Exceptional growth and muscling displayed in the progeny
- Recommended sire for crossing on most dairy breeds

Pedigree

SIRE: Netherallan Peter Pershore
 ┌───────────┐ Ankonian Elixir 100
 └───────────┘ Nightingale Pride Pershore S44

DAM: Lakewood Rhapsody Z001
 ┌───────────┐ Elgar of the Moss
 └───────────┘ Rawburn Royal Lady

Breedplan EBVs May 2026

	EBV	Rel.	Breed Avg
Calv Ease Direct (%)	-0.2	79%	-0.5
Calv Ease Daughters (%)	+3.9	73%	+0.8
Gestation Length (days)	-0.1	92%	0.0
Birth Weight (kg)	+3.5	94%	+3.5
200 Day Weight (kg)	+45	87%	+46
400 Day Weight (kg)	+85	86%	+83
600 Day Weight (kg)	+108	84%	+101
Mature Cow Weight (kg)	+90	77%	+91
Milk (kg)	+11	77%	+14
Scrotal Size (cm)	-0.2	80%	+1.3
Carcass Weight (kg)	+75	73%	+66
Eye Muscle Area (cm ²)	+4.4	63%	+4.7
Fat Depth (mm)	-3.0	71%	-1.4
Retail Beef Yield (%)	+1.8	63%	+1.2
IMF (%)	+0.1	62%	+0.2
Terminal Index	+42	-	+39
Self Replacing Index	+60	-	+52

GRENADE

HW Grenade

HB No: UK546977102535

Aberdeen Angus

DOB: 01/03/2019



- Impressive growth and muscle index
- Progeny displaying conformation and quality

Pedigree

SIRE: Netherton Kracker P790
 ┌───────────┐ SAV Brave 8320
 └───────────┘ Netherton Karama K574

DAM: Mohmar Gammer Eulanne N181
 ┌───────────┐ Sav Solid Gold 9187
 └───────────┘ Kitewood Gammer Eulanne

Breedplan EBVs May 2026

	EBV	Rel.	Breed Avg
Calv Ease Direct (%)	+0.1	62%	-0.5
Calv Ease Daughters (%)	+4.4	53%	+0.8
Gestation Length (days)	+1.5	79%	0.0
Birth Weight (kg)	+4.0	89%	+3.5
200 Day Weight (kg)	+46	81%	+46
400 Day Weight (kg)	+78	79%	+83
600 Day Weight (kg)	+102	75%	+101
Mature Cow Weight (kg)	+85	70%	+91
Milk (kg)	+10	65%	+14
Scrotal Size (cm)	+1.1	76%	+1.3
Carcass Weight (kg)	+63	64%	+66
Eye Muscle Area (cm ²)	+5.4	55%	+4.7
Fat Depth (mm)	-0.7	63%	-1.4
Retail Beef Yield (%)	+1.2	54%	+1.2
IMF (%)	+0.2	53%	+0.2
Terminal Index	+38	-	+39
Self Replacing Index	+58	-	+52

MR KAYO

Glenbrae Red Mr Kayo

HB No: UK939290404825

Aberdeen Angus

DOB: 15/04/2020



- Kayo is a Red Angus with above average growth and muscling
- Smooth fleshing sire, suitable for crossing on continental type cows

Pedigree

SIRE: Mosshall Red Evolution P353
 Red Lazy Mc Cowboy Cut
 Netherton Red Essence H483

DAM: Gannon Red Miss Kayo S697
 Hawkley Red Zhivago M598
 Gannon Red Miss Kayo K381

Breedplan EBVs May 2026

	EBV	Rel.	Breed Avg
Calv Ease Direct (%)	-2.9	37%	-0.5
Calv Ease Daughters (%)	+1.7	29%	+0.8
Gestation Length (days)	+0.6	63%	0.0
Birth Weight (kg)	+3.0	79%	+3.5
200 Day Weight (kg)	+45	72%	+46
400 Day Weight (kg)	+80	71%	+83
600 Day Weight (kg)	+104	65%	+101
Mature Cow Weight (kg)	+99	56%	+91
Milk (kg)	+9	57%	+14
Scrotal Size (cm)	+0.9	69%	+1.3
Carcass Weight (kg)	+67	54%	+66
Eye Muscle Area (cm ²)	+4.7	45%	+4.7
Fat Depth (mm)	-2.6	55%	-1.4
Retail Beef Yield (%)	+1.6	44%	+1.2
IMF (%)	-0.1	44%	+0.2
Terminal Index	+38	-	+39
Self Replacing Index	+53	-	+52

HIGHWAY

Drumhill Lord Highway

HB No: UK959342703271

Aberdeen Angus

DOB: 24/04/2019



- Tremendous indexes for both terminal and maternal
- Suitable for breeding replacements for the suckler herd

Pedigree

SIRE: Wedderlie Tarquin L383
 Papa Equator 2928
 HF Tibbie 86K

DAM: Drumhill Lady Heather P366
 Blelack Prince Consort
 Blelack Lady Heather J169

Breedplan EBVs May 2026

	EBV	Rel.	Breed Avg
Calv Ease Direct (%)	-1.4	57%	-0.5
Calv Ease Daughters (%)	-2.1	53%	+0.8
Gestation Length (days)	+0.5	74%	0.0
Birth Weight (kg)	+4.2	86%	+3.5
200 Day Weight (kg)	+45	80%	+46
400 Day Weight (kg)	+81	80%	+83
600 Day Weight (kg)	+97	75%	+101
Mature Cow Weight (kg)	+78	68%	+91
Milk (kg)	+20	65%	+14
Scrotal Size (cm)	+1.7	78%	+1.3
Carcass Weight (kg)	+61	65%	+66
Eye Muscle Area (cm ²)	+4.0	57%	+4.7
Fat Depth (mm)	-1.6	66%	-1.4
Retail Beef Yield (%)	+1.0	56%	+1.2
IMF (%)	+0.3	56%	+0.2
Terminal Index	+37	-	+39
Self Replacing Index	+46	-	+52

PHILO

Blackhaugh Philo X239

HB No: UK562121 702239

Aberdeen Angus

DOB: 25/04/2021



- Philo's sire Dead Centre was heavily proven for leading the bred for both gestation length and calving ease
- Philo ranks in the top 10% of the breed

Pedigree

SIRE: Quaker Hill Dead Centre
 ┌── Exar Denver 2002B
 └── Quaker Hill Blackcap

DAM: Blackhaugh Pride V992
 ┌── Blackhaugh Iceman
 └── Blackhaugh Pride P412

Breedplan EBVs May 2026

	EBV	Rel.	Breed Avg
Calv Ease Direct (%)	+0.1	56%	-0.5
Calv Ease Daughters (%)	+4.9	49%	+0.8
Gestation Length (days)	-2.2	76%	0.0
Birth Weight (kg)	+5.0	86%	+3.5
200 Day Weight (kg)	+72	82%	+46
400 Day Weight (kg)	+130	82%	+83
600 Day Weight (kg)	+150	78%	+101
Mature Cow Weight (kg)	+117	71%	+91
Milk (kg)	+15	68%	+14
Scrotal Size (cm)	+2.6	81%	+1.3
Carcass Weight (kg)	+96	69%	+66
Eye Muscle Area (cm ²)	+6.8	60%	+4.7
Fat Depth (mm)	-1.5	69%	-1.4
Retail Beef Yield (%)	+1.6	60%	+1.2
IMF (%)	+0.9	59%	+0.2
Terminal Index	+61	-	+39
Self Replacing Index	+82	-	+52

ELECTRIC STORM

Rawburn Electric Storm X604

HB No: UK562106 203604

Aberdeen Angus

DOB: 11/11/2021



- Electric Storm's sire is renowned for producing progeny with exceptional weight gains
- Pedigree is filled with top performance sires

Pedigree

SIRE: Oneills Black Bardolier
 ┌── Oneills Frontiersman
 └── Oneills Royal Lady 90

DAM: Rawburn Elsie T439
 ┌── Rawburn Transformer
 └── Rawburn Elsie D328

Breedplan EBVs May 2026

	EBV	Rel.	Breed Avg
Calv Ease Direct (%)	+7.6	55%	-0.5
Calv Ease Daughters (%)	+5.3	48%	+0.8
Gestation Length (days)	-2.3	75%	0.0
Birth Weight (kg)	+1.0	84%	+3.5
200 Day Weight (kg)	+60	80%	+46
400 Day Weight (kg)	+106	79%	+83
600 Day Weight (kg)	+122	74%	+101
Mature Cow Weight (kg)	+95	65%	+91
Milk (kg)	+8	68%	+14
Scrotal Size (cm)	+1.0	76%	+1.3
Carcass Weight (kg)	+89	64%	+66
Eye Muscle Area (cm ²)	+8.7	57%	+4.7
Fat Depth (mm)	+0.3	66%	-1.4
Retail Beef Yield (%)	+1.9	56%	+1.2
IMF (%)	+1.1	57%	+0.2
Terminal Index	+56	-	+39
Self Replacing Index	+81	-	+52

MARTY

Carmorn Marty

HB No: UK9063073/1395-2

Limousin

DOB: 16/09/2016



- Excellent crossing sire for suckler cows
- Progeny display lots of muscling and shape

Pedigree

SIRE: Mullary Intrepid
 ┌── Plumtree Fantastic
 └── Bremore Veneer

DAM: Carmorn Elsie
 ┌── Haltcliffe Underwriter
 └── Carmorn Sabrina

Breedplan EBVs March 2025

	EBV	Rel.	Breed Avg
Calv Ease Direct (%)	-2.20	76%	
Calv Ease Daughters (%)	0.90	54%	
Gestation Length (days)	1.20	92%	
Birth Weight (kg)	0.60	77%	
200 Day Weight (kg)	18.0	73%	
400 Day Weight (kg)	30.0	74%	
600 Day Weight (kg)	-	-	-
Mature Cow Weight (kg)	-	-	-
Milk (kg)	-	-	-
Scrotal Size (cm)	0.40	63%	
Carcass Weight (kg)	-	-	-
Eye Muscle Area (cm ²)	-	-	-
Fat Depth	-0.20	60%	-
Retail Beef Yield (%)	-	-	-
IMF (%)	-	-	-
Terminal Index	-	-	-
Self Replacing Index	-	-	-

IVANTONOV

Ivanatonov

HB No: FR8749281004

Limousin

DOB: 10/11/2013



- Exceptional calving ease sire
- Superb muscling & hindquarter development
- Recommended for breeding suckler replacements

Pedigree

SIRE: Bavardage
 ┌── On Dit
 └── Ridelle

DAM: Coccinelle
 ┌── Remix
 └── Vielle

IBOVAL Performance Data February 2026

	EBV	Rel
Calving ease (beef)	117	99%
Milk	114	81%
Maternal index	89	-
Birth to Weaning		
Growth	89	99%
Muscle development	107	99%
Skeletal development	81	99%
Fineness of bone	105	98%
Weaning proofs	105	99%
Finishing		
Carcass growth	99	94%
Carcass confirmation	113	95%
Beef Index	105	94%

JUBILANT

Knockagh Jubilant

HB No: UK902043409434

British Blue

DOB: 04/12/2014



Breedplan EBVs April 2026

	EBV	Rel.	Breed Avg
Calv Ease Direct (%)	+2.7	38%	-1.3
Calv Ease Daughters (%)	+1.8	30%	-0.9
Gestation Length (days)	+0.1	43%	+0.6
Birth Weight (kg)	+1.0	69%	+2.5
200 Day Weight (kg)	+13	58%	+13
400 Day Weight (kg)	+25	55%	+22
600 Day Weight (kg)	+34	56%	+32
Mature Cow Weight (kg)	+32	45%	+30
Milk (kg)	-	-	+3
Scrotal Size (cm)	+0.4	37%	+0.3
Carcass Weight (kg)	+24	43%	+17
Eye Muscle Area (cm ²)	+1.8	30%	+1.5
Fat Depth (mm)	-0.2	37%	0.0
Retail Beef Yield (%)	+0.7	34%	+0.4
IMF (%)	0.0	26%	+0.1
Terminal Index	+20	-	+12
Self Replacing Index	+20	-	+4

Pedigree

SIRE: Twyning Ash Ukekeke
 De Fontena Goldorak
 Twyning Ash Raquel

DAM: Knockagh Fancy Pants
 Ballygrange Alex
 Knockagh Windrose

LUXURY

Boroside Luxury

HB No: 372215083231556

Irish Blue

DOB: 15/09/2017



- Luxury displays impressive breed type
- Excellent performance figures for carcass weight

Breedplan EBV April 2026

	EBV	Rel.	Breed Avg
Calv Ease Direct (%)	-2.5	25%	-1.3
Calv Ease Daughters (%)	-	-	-0.9
Gestation Length (days)	+0.7	26%	+0.6
Birth Weight (kg)	+2.4	38%	+2.5
200 Day Weight (kg)	+11	30%	+13
400 Day Weight (kg)	+17	27%	+22
600 Day Weight (kg)	+27	28%	+32
Mature Cow Weight (kg)	-	-	+30
Milk (kg)	-	-	+3
Scrotal Size (cm)	-	-	+0.3
Carcass Weight (kg)	-	-	+17
Eye Muscle Area (cm ²)	-	-	+1.5
Fat Depth (mm)	-	-	0.0
Retail Beef Yield (%)	-	-	+0.4
IMF (%)	-	-	+0.1
Carcase Profit Index	+22	-	+12
Pedigree Breeding Index	+17	-	+4

Pedigree

SIRE: Mannequin De Sberchamps
 Accord De Wihogne
 Harpe De Sberchamps

DAM: Boroside Glenda
 Jackpot 9831 Ter Reybroeck
 Rosemount Daisy



- Olaf has exceptionally high performance indexes
- Low birth weight suggests calving ease

Pedigree

SIRE:	Graymar	┌───	Mountjoy Utopia (SR)
		└───	Bringlee Dahlia
DAM:	Chatham	┌───	Kerey Geronimo
		└───	Chatham Ida

Breedplan EBVs April 2026

	EBV	Rel.	Breed Avg
Calv Ease Direct (%)	+1.2	34%	-1.3
Calv Ease Daughters (%)	-0.3	27%	-0.9
Gestation Length (days)	-0.8	44%	+0.6
Birth Weight (kg)	+2.3	65%	+2.5
200 Day Weight (kg)	+21	61%	+13
400 Day Weight (kg)	+42	62%	+22
600 Day Weight (kg)	+59	65%	+32
Mature Cow Weight (kg)	+61	52%	+30
Milk (kg)	-	-	+3
Scrotal Size (cm)	+1.2	55%	+0.3
Carcass Weight (kg)	+33	52%	+17
Eye Muscle Area (cm ²)	+1.1	36%	+1.5
Fat Depth (mm)	-0.3	44%	0.0
Retail Beef Yield (%)	+0.4	39%	+0.4
IMF (%)	+0.2	30%	+0.1
Carcase Profit Index	+22	-	+12
Pedigree Breeding Index	+17	-	+4



- Rambo displays style and excellent breed type
- Outstanding muscling with exceptional hindquarter development

Pedigree

SIRE:	Woodview Solo	┌───	Tintin De My (IS)
		└───	Ballyfin Purdie
DAM:	Ridge Dean Wisdom	┌───	Serieux de Fooz (IS)
		└───	Ridge Dean Jessie

Breedplan EBV April 2026

	EBV	Rel.	Breed Avg
Calv Ease Direct (%)	-1.4	44%	-1.3
Calv Ease Daughters (%)	-1.0	36%	-0.9
Gestation Length (days)	+1.4	48%	+0.6
Birth Weight (kg)	+2.8	70%	+2.5
200 Day Weight (kg)	+13	60%	+13
400 Day Weight (kg)	+16	56%	+22
600 Day Weight (kg)	+24	56%	+32
Mature Cow Weight (kg)	+20	46%	+30
Milk (kg)	+3	25%	+3
Scrotal Size (cm)	+0.2	39%	+0.3
Carcass Weight (kg)	+12	44%	+17
Eye Muscle Area (cm ²)	+1.4	29%	+1.5
Fat Depth (mm)	+0.2	36%	0.0
Retail Beef Yield (%)	+0.2	34%	+0.4
IMF (%)	+0.2	26%	+0.1
Carcase Profit Index	+22	-	+12
Pedigree Breeding Index	+17	-	+4



- Locally breed bull
- Superb style with quality
- Excellent muscling with carcass

Pedigree

SIRE: An De Beuffaux
 Immense D Yvoir
 Experte De Beuffaux

DAM: Almeley Pearl
 Almeley Wellington
 Almeley Marbella

Breedplan EBVs May 2026

	EBV	Rel.	Breed Avg
Calv Ease Direct (%)	-1.7	27%	-1.3
Calv Ease Daughters (%)	-	-	-0.9
Gestation Length (days)	+0.9	27%	+0.6
Birth Weight (kg)	+2.0	41%	+2.5
200 Day Weight (kg)	+10	34%	+13
400 Day Weight (kg)	+15	30%	+22
600 Day Weight (kg)	+26	31%	+32
Mature Cow Weight (kg)	-	-	+30
Milk (kg)	-	-	+3
Scrotal Size (cm)	-	-	+0.3
Carcass Weight (kg)	-	-	+17
Eye Muscle Area (cm ²)	-	-	+1.5
Fat Depth (mm)	-	-	0.0
Retail Beef Yield (%)	-	-	+0.4
IMF (%)	-	-	+0.1
Terminal Index	+22	-	+12
Carcase Profitability Ind	+9	-	+12



- Excellent star ranking for carcass weight and conformation
- Superb length and exceptional pedigree

Pedigree

SIRE: Du Grand Bon Dieu
 Nodule Des Volees
 Noix Du Grand Bon Dieu

DAM: Mournview Princess
 Bedgebury Kent
 Ballincash Ismene

ICBF March 2026 Eurostar Rating

	EBV	Rel
Calving Diff (beef heifers)	14.4	55%
Calving Diff (beef cows)	7.8	66%
Calving Diff (dairy heifer)		
Calving Diff (dairy cow)		
Daughter Calv Diff (%)	6.62	62%
Mortality	0.05	44%
Gestation Length	1.12	45%
Docility	0.16	45%
Milk (kg)	4.5	43%
Carcass Weight	36.0	45%
Carcass Fat	-0.98	45%
Carcass Confirmation	2.82	45%
Age at Finish (days)	5.26	59%
Feed intake	-0.48	35%
Terminal Index (€)	169	47%
Replacement Index (€)	83	48%
Dairy Beef Index (€)	127	47%

WOODY

Brookfield 1 Woody

HB No: UK9332875 00317

Hereford

DOB: 06/04/2022



- Sired by the top Hereford sire Fabb 1 Northern Star
- Bloodlines of Woody's dam and grand dam include Pounder and Romeo

Pedigree

SIRE: Fabb 1 Northern Star
 ┌── Square-D Tortuga 953T
 └── Fabb 1 Snowdrop

DAM: Brookfield 1 Sierra
 ┌── Solpoll 1 Pounder
 └── Graceland 1 Freda

Breedplan EBVs April 2026

	EBV	Rel.	Breed Avg
Calv Ease Direct (%)	+4.7	50%	-0.2
Calv Ease Daughters (%)	+4.5	46%	+0.5
Gestation Length (days)	-1.4	70%	+0.5
Birth Weight (kg)	+2.4	74%	+2.5
200 Day Weight (kg)	+32	67%	+30
400 Day Weight (kg)	+68	68%	+54
600 Day Weight (kg)	+82	66%	+68
Mature Cow Weight (kg)	+69	57%	+63
Milk (kg)	+4	53%	+8
Scrotal Size (cm)	+0.7	59%	+0.9
Carcass Weight (kg)	+59	51%	+44
Eye Muscle Area (cm ²)	+4.6	42%	+2.5
Fat Depth (mm)	0.0	45%	0.0
Retail Beef Yield (%)	+1.5	41%	+0.5
IMF (%)	+0.2	43%	0.0
Terminal Index	+40	-	+27
Self Replacing Index	+50	-	+33

WILLYWONKA

Normanton 1 Willywonka

HB No: UK9020338 00847

Hereford

DOB: 30/08/2021



- Calving ease sire, recommended for crossing on dairy cows and heifers
- Short gestation

Pedigree

SIRE: Minlacowie Jubilant J123
 ┌── Allendale Waterloo
 └── Minlacowie Nikkie

DAM: Normanton 1 Cep 5th
 ┌── Normanton 1 Laertes
 └── Normanton 1 Cep 4th

Breedplan EBVs April 2026

	EBV	Rel.	Breed Avg
Calv Ease Direct (%)	+1.4	46%	-0.2
Calv Ease Daughters (%)	+3.1	41%	+0.5
Gestation Length (days)	-2.7	75%	+0.5
Birth Weight (kg)	+0.2	78%	+2.5
200 Day Weight (kg)	+28	71%	+30
400 Day Weight (kg)	+48	71%	+54
600 Day Weight (kg)	+57	73%	+68
Mature Cow Weight (kg)	+63	64%	+63
Milk (kg)	+17	59%	+8
Scrotal Size (cm)	+0.6	67%	+0.9
Carcass Weight (kg)	+44	60%	+44
Eye Muscle Area (cm ²)	+2.1	49%	+2.5
Fat Depth (mm)	-1.9	52%	0.0
Retail Beef Yield (%)	+1.4	52%	+0.5
IMF (%)	-0.4	48%	0.0
Terminal Index	+27	-	+27
Self Replacing Index	+31	-	+33

GRISY

Grisy

HB No: FR6950643724

Charolais EXC

DOB: 30/07/2011



- Tremendous muscling ability
- Above average growth & high carcass value
- Progeny consistently achieves top prices

Pedigree

SIRE: Ucello ┌─── Jupet
 └─── Poesie

DAM: Caleche ┌─── Imail
 └─── Ulna

IBOVAL Performance Data January 2026

	EBV	Rel
Calving ease (dairy)	104	86%
Milk	-	-
Maternal index	-	-
Birth to Weaning		
Growth	112	86%
Muscle development	-	-
Skeletal development	-	-
Fineness of bone	101	81%
Weaning Index	-	-
Finishing		
Carcass growth	99	83%
Carcass confirmation	111	86%
Beef Index	105	83%

SEXY

Sexy Exc

HB No: FR6951163059

Charolais EXC

DOB: 30/03/2021



- Exceptional calving ease
- Suitable for crossing onto dairy cows
- 281 day gestation length

Pedigree

SIRE: Jurix ┌─── Bonheur
 └─── Dany

DAM: Operette ┌─── Higor
 └─── Jupette

IBOVAL Performance Data January 2026

	EBV	Rel
Calving ease (dairy)	115	98%
Milk	-	-
Maternal index	-	-
Birth to Weaning		
Growth	96	72%
Muscle development	116	86%
Skeletal development	-	-
Fineness of bone	122	80%
Weaning Index	-	-
Finishing		
Carcass growth	-	-
Carcass confirmation	117	77%
Beef Index	106	72%

RIGOLO

Rigolo EXC

HB No: FR4320860862

Charolais EXC

DOB: 14/09/2020



- Calving ease sire with high growth rate
- Suitable for dairy cows to improve calf quality

Pedigree

SIRE:	Hardi Exc	┌───	Vaudou
		└───	Dany
DAM:	Fleurette	┌───	Diabolo
		└───	Rageuse

IBOVAL Performance Data January 2026

	EBV	Rel
Calving ease (dairy)	110	89%
Milk	-	-
Maternal index	-	-
Birth to Weaning		
Growth	-	-
Muscle development	114	87%
Skeletal development	-	-
Fineness of bone	107	81%
Weaning Index	-	-
Finishing		
Carcass growth	105	68%
Carcass confirmation	108	73%
Beef index	106	68%

MINJOT

Minjot EXC

HB No: FR4341423129

Charolais EXC

DOB: 05/12/2016



- Calving ease sire with high growth rate
- Suitable for dairy cows to improve calf quality

Pedigree

SIRE:	Gaullist	┌───	Jupet
		└───	Biche
DAM:	Inedite	┌───	Sacha
		└───	Pleasant

IBOVAL Performance Data January 2026

	EBV	Rel
Calving ease (dairy)	100	99%
Milk	-	-
Maternal index	-	-
Birth to Weaning		
Growth	98	96%
Muscle development	-	-
Skeletal development	-	-
Fineness of bone	105	82%
Weaning Index	-	-
Finishing		
Carcass growth	-	-
Carcass confirmation	111	97%
Beef index	35	-

MEXPLOR

Mexplor

HB No: FR0916840411



INRA 95



DOB: 23/10/2016



- Progeny have excellent growth rates
- Early finishing ability

Pedigree

SIRE: Explorer  Urtis
 6043

DAM: Hysatis  Urtis
 6079

IBOVAL Performance Data January 2026

	EBV	Rel
Calving ease (dairy)	106	96%
Milk	-	-
Maternal index	-	-
Birth to Weaning		
Growth	-	-
Muscle development	-	-
Skeletal development	-	-
Fineness of bone	-	-
Weaning Index	-	-
Finishing		
Carcass growth	111	92%
Carcass confirmation	137	93%
Beef Index	123	92%

NOUNOURS

Nounours

HB No: FR1218208009


INRA 95

DOB: 20/09/2017



- Progeny have excellent growth rates
- Early finishing ability

Pedigree

SIRE: Francis  Ulrich
 7008

DAM: Icone  Vanicoro
 Fagoune

IBOVAL Performance Data January 2026

	EBV	Rel
Calving ease (dairy)	106	97%
Milk	-	-
Maternal index	-	-
Birth to Weaning		
Growth	-	-
Muscle development	-	-
Skeletal development	-	-
Fineness of bone	-	-
Weaning Index	-	-
Finishing		
Carcass growth	101	71%
Carcass confirmation	138	73%
Beef Index	99	-

RHESUS

Rhesus

HB No: FR1221019345

INRA 95

DOB: 29/08/2020



- Exceptional calving ease
- 278 day gestation length

Pedigree

SIRE: Locus	┌───	Valchoc
	└───	Cafeine
DAM: Magda	┌───	Explorer
	└───	Hysatis

IBOVAL Performance Data January 2026

	EBV	Rel
Calving ease (dairy)	116	99%
Milk	-	-
Maternal index	-	-
Birth to Weaning		
Growth	-	-
Muscle development	-	-
Skeletal development	-	-
Fineness of bone	-	-
Weaning Index	-	-
Finishing		
Carcass growth	98	99%
Carcass confirmation	125	92%
Beef Index	110	91%

BALDWIN

OMORGA BALDWIN 10

HB No: UK963633004531

Simmental

DOB: 06/09/2020



- Superb calf quality
- High farmer satisfaction
- Recommended for the weanling market

Pedigree

SIRE: Omorga Volvo	┌───	Cleenagh Flasher
	└───	Omorga Bambi 2
DAM: Omorga Daffodil	┌───	Blackford Explosion
	└───	Cleenagh Daffodil

Breedplan EBVs May 2026

	EBV	Rel.	Breed Avg
Calv Ease Direct (%)	-2.2	84%	-1.3
Calv Ease Daughters (%)	-4.6	82%	-0.4
Gestation Length (days)	-1.6	86%	-0.1
Birth Weight (kg)	+1.6	92%	+2.9
200 Day Weight (kg)	+22	86%	+36
400 Day Weight (kg)	+46	84%	+66
600 Day Weight (kg)	+52	82%	+70
Mature Cow Weight (kg)	+52	70%	+71
Milk (kg)	+10	72%	+6
Scrotal Size (cm)	+1.4	76%	+0.7
Carcass Weight (kg)	+30	72%	+48
Eye Muscle Area (cm ²)	+4.3	59%	+4.3
Fat Depth (mm)	+0.1	67%	-0.2
Retail Beef Yield (%)	+1.0	64%	+1.1
IMF (%)	-0.1	60%	-0.2
Terminal Index	+118	-	+82
Self Replacing Index	+141	-	+91

Triple Mixed Semen



More Choice
More Calves
More Profit

Triple Mix semen gives you the best of three bulls in one straw – boosting conception rates and maximising genetic diversity in your herd. Designed for use in both dairy and beef systems, Triple Mix is ideal for block calving or compact breeding periods where every pregnancy counts.

Each straw contains semen from three proven bulls, increasing the chance of a successful fertilisation and reducing the risk of empty cows. It's efficient, effective, and built for today's farming challenges.

Ask your Breeding Advisor about our 2026 Triple Mix options.

Belgian Blue Mix



JUBILANT



TOPDOG

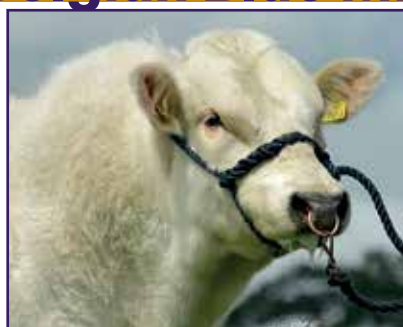


SNOWEY

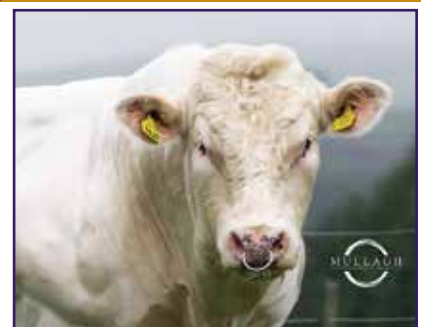
Belgian Blue Mix



INCREDIBLE



LUXURY



OLAF

BB X AA X Hereford Mix



TOPDOG



GRENADE



WOODY

BB X AA X Hereford Mix



OLAF



PHILO



WILLYWONKA

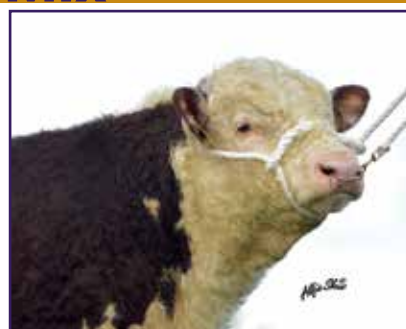
BB X AA X Hereford Mix



OLAF



NETWORK



SILAS

Angus Mix



VINNY



MOSSY



GRENADE

AA X AA X Hereford Mix



HIGHWAY



GRENADE



ULSTERMAN

AA X AA X Hereford Mix



HIGHWAY



GRENADE



WILLYWONKA

LIM X AA X Hereford Mix



NEYMAR



GRENADE



SILAS

LIM X AA X BB Mix



NEYMAR



GRENADE



LUXURY

SIM X LIM X AA Mix



ISAAC



MARTY



ERIC

Shorthorn X Belted x Hereford Mix



PARNASSUS



HIGH HOPE



SILAS



AI SERVICES
– NORTHERN IRELAND –

**To Book a Service Call, Pregnancy Scan
or for more information call
028 9083 3123**

Breeding Consultants

Ivan Minford	Antrim	078 3118 9852
Gary Henderson	Antrim/L'Derry	079 8934 6226
Nigel Spence	Armagh/Tyrone	078 0927 4141
David Dunlop	Down/Armagh	079 7660 5701
John Sproule	Fermanagh/Tyrone	077 7816 9263

Whilst every effort has been made to ensure that the information contained in this publication is accurate, Ai Services Northern Ireland Ltd. accepts no responsibility for any errors contained within this catalogue and without prejudice do not accept any liability for losses which may result from any such error.

Please refer to our website for full terms & conditions.

Web:
www.ai-services.co.uk

Email:
info@ai-services.co.uk

Ballycraigy
671 Antrim Road
Newtownabbey
Co Antrim
BT36 4RL