

Breed and succeed with

AI SERVICES

– NORTHERN IRELAND –



*The Building Blocks to
Long Term Profitability*

HOLSTEIN SPRING UPDATE 2024



AI SERVICES

- NORTHERN IRELAND -



Making genetics deliver for you

AI Services (NI) is a trusted farmer-owned company with approximately 2,500 farmer shareholders.

At AI Services our mission is to help NI farmers profit through high quality livestock genetics and to supply an efficient and effective A.I. service to livestock producers throughout Northern Ireland.

Combining our market-leading genetics with informed breeding decisions can help build future farm profitability.

Our team of specialist breeding advisors are on hand to assess your herd's current genetic performance, review its specific strengths and weaknesses, and create a bespoke genetic plan for your herd.

AI Technician Network

Our dedicated team of AI technicians are on hand to provide an effective and efficient insemination service to all our customers throughout Northern Ireland. All calls logged before 10.30am are guaranteed a same day service.

AI Services Stud Facilities

Our Ballycraigy Stud is an EU Approved Semen Collection Centre for cattle and home to dedicated facilities for semen analysis and storage. Semen collected at the stud is eligible for export to EU member states and a range of countries across the globe. Our specialist team at the stud are also available to conduct bull fertility assessments on commercial farms.

For more information phone Ballycraigy on (028) 9083 3123.



Jane Steel

Contents

Page

Page










Holsteins


5

Beef for the Dairy Herd

31

Holstein Sires PTA December 2024

Bull Name	PLI £	Milk Kg	Fat Kg	Fat %	Protein Kg	Protein %	Combined Fat and Protein Kg	Pedigree	Page
Aeronaut	£647	+690	+28.2	+0.01	+28.7	+0.07	+56.9	Aerosmith X Freemax	5
Bullpocalypse	£858	+782	+42.1	+0.12	+32.8	+0.08	+74.9	Gadzook X No Excuse	6
Exum	£550	+758	+40.9	+0.12	+26.9	+0.02	+67.8	Champion Red X Tropic	7
Francesco 	£776	+456	+31.6	+0.15	+30.7	+0.18	+62.3	Foreman X Simon	8
Futurama	£754	+483	+45.0	+0.29	+28.5	+0.14	+73.5	Zazzle X Cascade	9
Garido 	£616	+880	+42.1	+0.07	+31.4	+0.03	+73.5	Gymnast X Penley	10
Garrix	£835	+908	+53.3	+0.18	+40.0	+0.11	+93.3	Kevlow X Zazzle	11
Indigo 	£529	+705	+32.5	+0.05	+27.4	+0.05	+59.9	Imax X Draco	12
Kamara 	£659	+965	+33.5	-0.06	+27.8	-0.04	+61.3	Rubels X Altuve	13
Kevlow 	£787	+796	+49.5	+0.19	+36.2	+0.11	+85.7	Plinko X Marius	14
Masquerade 	£817	+634	+44.8	+0.22	+30.1	+0.10	+74.9	Kevlow X Pursuit	15
Pellegrino	£682	+835	+31.0	-0.03	+26.7	-0.01	+57.7	Topnotch X Router	17
Powerbuck 	£713	+951	+31.0	-0.08	+28.2	-0.03	+59.2	Tiki X Pursuit	18
Regulus	£755	+445	+48.1	+0.35	+27.6	+0.15	+75.7	Zazzle X Crimson	19
Roller	£760	+632	+32.0	+0.13	+42.2	+0.19	+74.2	Ridercup X Copyright	20
Saiko	£702	+776	+35.5	+0.05	+29.3	+0.04	+64.8	Magnifique X Pursuit	21
Skovly P	£627	+396	+29.2	+0.15	+24.7	+0.13	+53.9	Slatt P X Nerd RC	22
Splink	£731	+552	+42.4	+0.23	+28.5	+0.12	+70.9	Plinko X Pursuit	23
Sulien 	£705	+464	+36.6	+0.21	+26.8	+0.13	+63.4	Pursuit X Robson	24
Susic	£765	+676	+47.9	+0.23	+31.4	+0.10	79.3	Magnifique X Zazzle	25
Try	£507	+637	+28.8	+0.04	+29.0	+0.09	+57.8	Tomcruise X Royal	26
Vance	£818	+900	+45.3	+0.10	+39.1	+0.10	+84.4	Holysmokes X Plinko	27
Vandyke 	£887	+937	+55.6	+0.20	+38.4	+0.08	+94.0	Zemini X Plinko	28
Wheelhouse	£623	+618	+38.1	+0.15	+24.2	+0.04	+62.3	Pursuit X Duke	29

 Recommended for Robotic Milking



Front Cover Photo: Bartinney Altavelvet Chassity VG88 2yo Maximum Score. Back Cover Photo: Vanden-Berge Trpc Daphne ET VG85, dam of Exum.

Whilst every effort has been made to ensure the accuracy of all information contained in this catalogue, AI Services (NI) Ltd. accepts no responsibility whatsoever for any error, and without prejudice do not accept any liability for loss which may result from any error.

AI Services is the supplier / seller of semen and does not carry any responsibility or liability to the buyer in respect of loss arising from performance or fertility issues, or any other matters which are outside of the direct control of AI Services. The purchase of semen does not guarantee fertility or conception.

AI Services abides by the AHDB Dairy and Holstein UK established Code of Advertising.

A *i Services presents the Top 10 Rankings for the Holstein Sires in this Catalogue. It is recommended you use the sire rankings only as a guide in your selections.*

PLI		
1	Vandyke	£887
2	BullPocalypse	£858
3	Garrix	£832
4	Vance	£818
5	Masquerade	£817
6	Kevlow	£787
7	Francesco	£776
8	Susic	£765
9	Roller	£760
10	Regulus	£755

Milk Kgs		
1	Kamara	+965
2	Powerbuck	+951
3	Vandyke	+937
4	Garrix	+908
5	Vance	+900
6	Garido	+880
7	Pellegrino	+835
8	Kevlow	+796
9	BullPocalypse	+782
10	Saiko	+776

Fat + Protein Kgs		
1	Vandyke	+94.0
2	Garrix	+93.3
3	Kevlow	+85.7
4	Vance	+84.4
5	Susic	+79.3
6	Regulus	+75.7
7=	BullPocalypse	+74.9
7=	Masquerade	+74.9
9	Roller	+74.2
10	Garido	+73.5

Fat %		
1	Regulus	+0.35
2	Futurama	+0.29
3=	Susic	+0.23
3=	Splink	+0.23
5	Masquerade	+0.22
6	Sulien	+0.21
7	Vandyke	+0.20
8	Kevlow	+0.19
9	Garrix	+0.18
10	Wheelhouse	+0.15

Protein %		
1	Roller	+0.19
2	Francesco	+0.18
3	Regulus	+0.15
4	Futurama	+0.14
5=	Sulien	+0.13
5=	Skovly P	+0.13
7	Splink	+0.12
8=	Kevlow	+0.11
9=	Garrix	+0.11
10	Susic	+0.10

Type Merit		
1	Exum	+2.12
2	Aeronaut	+2.06
3	Francesco	+2.01
4	Kamara	+1.99
5	Sulien	+1.57
6	Powerbuck	+1.49
7	BullPocalypse	+1.47
8	Wheelhouse	+1.40
9	Vance	+1.30
10	Try	+1.27

Mammary		
1	Exum	+3.38
2	Aeronaut	+2.81
3	Kamara	+2.28
4	Francesco	+2.12
5	Pellegrino	+2.09
6	BullPocalypse	+2.05
7	Try	+1.87
8	Futurama	+1.66
9	Powerbuck	+1.65
10	Garido	+1.49

Feet & Legs		
1	Aeronaut	+1.76
2	Sulien	+1.63
3	Francesco	+1.43
4	Kamara	+1.20
5	Skovly P	+1.18
6	Garido	+1.13
7	Masquerade	+1.11
8	Exum	+1.09
9	Vance	+1.02
10	Powerbuck	+0.96

Fertility		
1	BullPocalypse	+11.2
2	Aeronaut	+10.6
3	Powerbuck	+10.2
4	Masquerade	+10.0
5	Pellegrino	+8.8
6	Saiko	+8.5
7	Skovly P	+8.4
8	Splink	+8.1
9=	Vance	+7.2
9=	Futurama	+7.2

Lifespan		
1	Powerbuck	+180
2	Pellegrino	+162
3	Francesco	+156
4	Saiko	+149
5	BullPocalypse	+140
6=	Aeronaut	+137
6=	Masquerade	+137
6=	Wheelhouse	+137
6=	Sulien	+137
10	Kamara	+134

Somatic Cell Count		
1	Kamara	-27
2=	Pellegrino	-26
2=	Vandyke	-26
4=	Powerbuck	-22
4=	BullPocalypse	-22
4=	Susic	-22
7	Masquerade	-21
8=	Regulus	-20
8=	Futurama	-20
10	Saiko	-19

Direct Calving Ease		
1	Francesco	+0.6
2=	Garido	+0.2
2=	Garrix	+0.2
4=	Kevlow	+0.1
4=	Wheelhouse	+0.1
4=	Skovly P	+0.1
4=	Splink	+0.1
8	Susic	+0.0
9=	Masquerade	-0.1
9=	Saiko	-0.1

Robotic Milking		
1	Francesco	
2	Kevlow	
3	Masquerade	
4	Powerbuck	
5	Sulien	
6	Garido	
7	Indigo	
8	Kamara	
9	Vandyke	

Assessing Inbreeding

A degree of inbreeding always occurs when animals related to one another are mated as a result of a concentration of the same genes. See table to the right for Inbreeding Levels.

Rule of Thumb

Commercial producers should avoid matings leading to an inbreeding level of greater than 6.25%.

Mating	Inbreeding %
Sire/Daughter	25%
Full brother/Full sister	25%
Half brother/Half sister	12.5%
Grandsire/Granddaughter	12.5%
Grandson/Granddam	12.5%
Uncle/Niece	6.25%
Son/Granddaughter	6.25%
Daughter/Grandson	6.25%
Full cousins	6.25%
Grandson/Granddaughter	3.13%
Half cousins	3.13%

AERONAUT

Aeronaut ET BLF BYF CVF CDF

Sexed and Conventional

HB No: 60000364054923 AI Code: HO7727
 Beta Casein A2A2 Source: Germany
 Kappa Casein AB DOB: 06.02.22



HOLSTEIN PRODUCTION	
AHDB Dairy	PTA December 2023
Production Reliability 73%	PLI Reliability 66%
PLI	£647
Milk Kg	+690
Fat Kg	+28.2
Fat %	+0.01
Protein Kg	+28.7
Protein %	+0.07
SCI £349	ACI £507 Rel. 66%
Genomic Young Sire Pedigree Index	

✓ **High Type Sire +2.06**

✓ **Daughter Fertility +10.6**

✓ **Superb Udders +2.81**

✓ **Positive Components**

✓ **Excellent Legs + Feet +1.76**

✓ **Excellent Cow Family**

SYNETICS

Aerosmith X Freemax X Benz

MANAGEMENT TRAITS		12/23
Healthy Cow Index	£259	Improver
Enviro Cow Index	+2.5	Improver
Fertility Index	+10.6	Improver
Lifespan	+137	Improver
Somatic Cell Count	-10	Improver
Mastitis	-1	Improver
TB Advantage	+1.5	Desirable
Lameness Index	+2.2	Improver
Maintenance	+30	Desirable
Calf Survival	+1.1	Improver
Direct Calving Ease	-0.7	Easy
Mat. Calving Ease	+1.4	Easy
Gestation Length	-1	Shorter
Digital Dermatitis	+0.1	Improver
Dairy Carcase	+1.9	Improver
Feed Advantage	-89	Improver
Temperament	+0.18	Good
Ease of Milk	-0.43	Fast

Below Average Average Above Average

HOLSTEIN CONFORMATION		HUKI 12/23
Young Genomic Pedigree Index		53% Reliability
Type Merit	+2.06	Excellent
Mammary	+2.81	Excellent
Legs & Feet	+1.76	Excellent
Stature	+2.12	160 cm
Chest Width	+1.94	Wide
Body Depth	+1.07	Deep
Angularity	+0.83	Open Rib
Rump Angle	-0.64	Low Pins
Rump Width	+1.98	Wide
Rear Leg Side	+0.16	Sickled
Foot Angle	+1.27	Steep
Fore Udder Att	+3.35	Tight
Rear Udder Ht	+2.01	Very High
Udder Support	+1.00	Strong
Udder Depth	+2.92	20cm Above
Front Teat Pl.	+0.47	Close
Teat Length	-0.66	Long
Rear Teat Pl.	+1.00	Close
Teat Pos. Side	-0.26	Apart
Locomotion	+1.34	Excellent
Condition Score	+1.06	High

-2 +2

BULLPOCALYPSE

Peak Bullpocalypse ET BLF BYF CVF DPF CDF



HB No: 65003247843699 AI Code: HO7832
 Beta Casein A2A2 Source: USA
 Kappa Casein BB DOB: 24.05.22



HOLSTEIN PRODUCTION	
AHDB Dairy	PTA December 2023
Production Reliability 73%	PLI Reliability 66%
PLI	£858
Milk Kg	+782
Fat Kg	+42.1
Fat %	+0.12
Protein Kg	+32.8
Protein %	+0.08
SCI £544	ACI £707 Rel. 66%
Genomic Young Sire Pedigree Index	

- ✓ **Top 20 PLI Sire**
- ✓ **Ideal leg angle setting**
- ✓ **Over +2 points on Udders**
- ✓ **+75gs Fat + Protein**
- ✓ **Massive Daughter Fertility at +11.2**
- ✓ **Improves Chest + Rump Width**



Gadzook X No Excuse X Klutch

MANAGEMENT TRAITS		12/23
Healthy Cow Index	£292	Improver
Enviro Cow Index	+3.7	Improver
Fertility Index	+11.2	Improver
Lifespan	+140	Improver
Somatic Cell Count	-22	Improver
Mastitis	-2	Improver
TB Advantage	+0.8	Desirable
Lameness Index	+3.9	Improver
Maintenance	+6	Desirable
Calf Survival	+2.2	Improver
Direct Calving Ease	-0.8	Easy
Mat. Calving Ease	+1.5	Easy
Gestation Length	-4	Shorter
Digital Dermatitis	+0.5	Improver
Dairy Carcase	+0.9	Improver
Feed Advantage	+60	Improver
Temperament	-0.10	Good
Ease of Milk	-0.02	Fast

Below Average Average Above Average

HOLSTEIN CONFORMATION		HUKI 12/23
Young Genomic Pedigree Index		53% Reliability
Type Merit	+1.47	Excellent
Mammary	+2.05	Excellent
Legs & Feet	+0.55	Excellent
Stature	+0.43	160 cm
Chest Width	+0.56	Wide
Body Depth	-0.60	Deep
Angularity	+0.50	Open Rib
Rump Angle	-0.78	Low Pins
Rump Width	+1.38	Wide
Rear Leg Side	+0.57	Sickled
Foot Angle	-0.22	Steep
Fore Udder Att	+1.97	Tight
Rear Udder Ht	+1.33	Very High
Udder Support	+0.92	Strong
Udder Depth	+1.67	20cm Above
Front Teat Pl.	+0.56	Close
Teat Length	+0.01	Long
Rear Teat Pl.	+1.27	Close
Teat Pos. Side	+0.29	Apart
Locomotion	+0.44	Excellent
Condition Score	-0.02	High

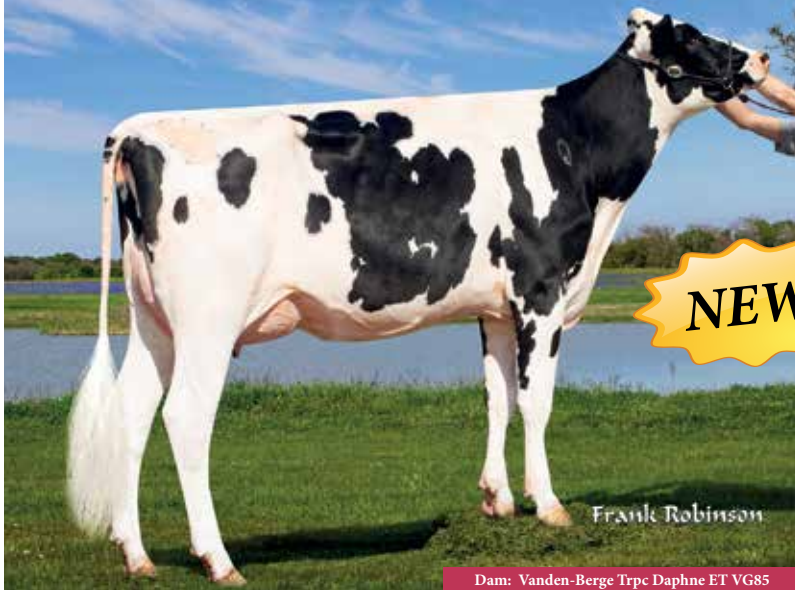
-2 +2

EXUM

Per Order
Allow 6 weeks delivery

HB No: 65003229908561 AI Code: HO7667
Beta Casein A2A2 Source: USA
Kappa Casein AA DOB: 13.08.21

Vanden-Berge Peak Exum ET BLF DPF POF RDF CDF



HOLSTEIN PRODUCTION	
AHDB Dairy	PTA December 2023
Production Reliability 72%	PLI Reliability 66%
PLI	£550
Milk Kg	+758
Fat Kg	+40.9
Fat %	+0.12
Protein Kg	+26.9
Protein %	+0.02
SCI £277	ACI £408 Rel. 66%
Genomic Young Sire Pedigree Index	

✓ **Exceptional Udders**
+3.38

✓ **Great Feet + Legs with**
Excellent Locomotion

✓ **Show Winning Style**

✓ **Gdam VG89 Points**

✓ **Excellent Production**

✓ **Type with Production**



Champion-Red X Tropic X Delta-Lambda

MANAGEMENT TRAITS		12/23
Healthy Cow Index	£123	Improver
Enviro Cow Index	+2.1	Improver
Fertility Index	+2.0	Improver
Lifespan	+37	Improver
Somatic Cell Count	-7	Improver
Mastitis	+0	Improver
TB Advantage	+0.9	Desirable
Lameness Index	+1.5	Improver
Maintenance	+19	Desirable
Calf Survival	+1.4	Improver
Direct Calving Ease	-1.0	Easy
Mat. Calving Ease	+1.3	Easy
Gestation Length	-1	Shorter
Digital Dermatitis	+0.1	Improver
Dairy Carcase	+1.3	Improver
Feed Advantage	-51	Improver
Temperament	+0.36	Good
Ease of Milk	+1.69	Fast

Below Average Average Above Average

HOLSTEIN CONFORMATION		HUKI 12/23
Young Genomic Pedigree Index		72% Reliability
Type Merit	+2.12	Excellent
Mammary	+3.38	Excellent
Legs & Feet	+1.09	Excellent
Stature	+2.08	160 cm
Chest Width	+0.41	Wide
Body Depth	+0.62	Deep
Angularity	+1.71	Open Rib
Rump Angle	-2.66	Low Pins
Rump Width	+1.85	Wide
Rear Leg Side	+0.32	Sickled
Foot Angle	+0.76	Steep
Fore Udder Att	+3.15	Tight
Rear Udder Ht	+2.97	Very High
Udder Support	+2.86	Strong
Udder Depth	+2.46	20cm Above
Front Teat Pl.	+1.51	Close
Teat Length	-1.05	Long
Rear Teat Pl.	+2.75	Close
Teat Pos. Side	+1.25	Apart
Locomotion	+0.94	Excellent
Condition Score	-0.52	High

-2 +2

FRANCESCO

Francesco ET BLF BYF CVF CDF

Sexed and Conventional

HB No: 60000364300459 AI Code: HO7619
 Beta Casein A1A2 Source: Germany
 Kappa Casein AB DOB: 28.01.22



HOLSTEIN PRODUCTION	
AHDB Dairy Production Reliability 73%	PTA December 2023 PLI Reliability 66%
PLI	£776
Milk Kg	+456
Fat Kg	+31.6
Fat %	+0.15
Protein Kg	+30.7
Protein %	+0.18
SCI £516	ACI £650 Rel. 66%
Genomic Young Sire Pedigree Index	

✓ **Robotic Milking**

✓ **Improves Longevity**

✓ **Super Udders +2.12**

✓ **Outcross Pedigree**

✓ **Lowers Stature**

✓ **Improves Locomotion**

SYNETICS

Foreman X Simon X My Dream

MANAGEMENT TRAITS		12/23
Healthy Cow Index	£239	Improver
Enviro Cow Index	+3.6	Improver
Fertility Index	+7.1	Improver
Lifespan	+156	Improver
Somatic Cell Count	-15	Improver
Mastitis	-1	Improver
TB Advantage	+2.0	Desirable
Lameness Index	+1.9	Improver
Maintenance	+8	Desirable
Calf Survival	+1.0	Improver
Direct Calving Ease	+0.6	Easy
Mat. Calving Ease	+1.3	Easy
Gestation Length	-1	Shorter
Digital Dermatitis	+0.4	Improver
Dairy Carcase	+0.9	Improver
Feed Advantage	+54	Improver
Temperament	-0.24	Good
Ease of Milk	+0.24	Fast

Below Average Average Above Average

HOLSTEIN CONFORMATION		HUKI 12/23 53% Reliability
Type Merit	+2.01	Excellent
Mammary	+2.12	Excellent
Legs & Feet	+1.43	Excellent
Stature	+0.01	160 cm
Chest Width	+1.21	Wide
Body Depth	+0.40	Deep
Angularity	-0.04	Open Rib
Rump Angle	-0.84	Low Pins
Rump Width	+0.54	Wide
Rear Leg Side	-0.55	Sickled
Foot Angle	+0.35	Steep
Fore Udder Att	+1.95	Tight
Rear Udder Ht	+1.48	Very High
Udder Support	+0.07	Strong
Udder Depth	+1.61	20cm Above
Front Teat Pl.	+0.57	Close
Teat Length	+0.62	Long
Rear Teat Pl.	-1.30	Close
Teat Pos. Side	-0.19	Apart
Locomotion	+1.75	Excellent
Condition Score	+1.29	High

-2 +2

FUTURAMA

Peak AltaFuturama ET BLF BYF CVF DPF CDF

Sexed and Conventional

HB No: 65003215425949 AI Code: HO7371
 Beta Casein A1A2 Source: USA
 Kappa Casein AB DOB: 08.11.20



5th Dam: Cookiecutter Mom Halo ET VG88

HOLSTEIN PRODUCTION	
AHDB Dairy	PTA December 2023
Production Reliability 73%	PLI Reliability 67%
PLI	£754
Milk Kg	+483
Fat Kg	+45.0
Fat %	+0.29
Protein Kg	+28.5
Protein %	+0.14
SCI £479	ACI £609 Rel. 67%
Genomic Young Sire Pedigree Index	

✓ **PLI**

✓ **Fertility Index**

✓ **Component Specialist**

✓ **Udders**

✓ **Over +73 Kgs Fat + Protein**

✓ **All Round Type Improver**



Zazzle X Cascade X Reason

MANAGEMENT TRAITS		12/23
Healthy Cow Index	£200	Improver
Enviro Cow Index	+3.3	Improver
Fertility Index	+7.2	Improver
Lifespan	+76	Improver
Somatic Cell Count	-20	Improver
Mastitis	-3	Improver
TB Advantage	+1.8	Desirable
Lameness Index	+1.2	Improver
Maintenance	+12	Desirable
Calf Survival	+1.1	Improver
Direct Calving Ease	-1.0	Easy
Mat. Calving Ease	+1.2	Easy
Gestation Length	-2	Shorter
Digital Dermatitis	-0.2	Improver
Dairy Carcase	+0.4	Improver
Feed Advantage	+57	Improver
Temperament	+0.02	Good
Ease of Milk	+1.17	Fast

Below Average Average Above Average

HOLSTEIN CONFORMATION		HUKI 12/23
Young Genomic Pedigree Index		55% Reliability
Type Merit	+1.03	Excellent
Mammary	+1.66	Excellent
Legs & Feet	+0.68	Excellent
Stature	+1.41	160 cm
Chest Width	+0.23	Wide
Body Depth	+0.19	Deep
Angularity	+1.11	Open Rib
Rump Angle	+0.21	Low Pins
Rump Width	+1.04	Wide
Rear Leg Side	+0.23	Sickled
Foot Angle	+1.33	Steep
Fore Udder Att	+2.13	Tight
Rear Udder Ht	+1.51	Very High
Udder Support	+0.42	Strong
Udder Depth	+1.43	20cm Above
Front Teat Pl.	+1.45	Close
Teat Length	-0.53	Long
Rear Teat Pl.	+1.09	Close
Teat Pos. Side	+0.02	Apart
Locomotion	+0.15	Excellent
Condition Score	-1.03	High

-2 +2

GARIDO

Garido ET BLF BYF CVF CDF

Daughter Proven

HB No: 60000122629481

AI Code:

Beta Casein A1A2

Source: Germany

Kappa Casein AE

DOB: 24.08.17



HOLSTEIN PRODUCTION

AHDB Dairy

PTA December 2023

Production Reliability 82%

PLI Reliability 82%

PLI	£616
Milk Kg	+880
Fat Kg	+42.1
Fat %	+0.07
Protein Kg	+31.4
Protein %	+0.03
SCI £370	ACI £506
Rel. 82%	
Daughter Proven - 3826 Daughters in 1043 Herds	

✓ **High Production**

✓ **Strong Robust Cows**

✓ **Robotic Milking**

✓ **Locomotion**

✓ **Feet and Legs**

✓ **Robotic Milking**



Gymnast X Penley X Boss

MANAGEMENT TRAITS		12/23
Healthy Cow Index	£130	Improver
Enviro Cow Index	+2.5	Improver
Fertility Index	+2.4	Improver
Lifespan	+70	Improver
Somatic Cell Count	-19	Improver
Mastitis	-1	Improver
Maintenance	+7	Desirable
Direct Calving Ease	+0.2	Easy
Mat. Calving Ease	+1.1	Easy
Temperament	+1.01	Good
Ease of Milk	+0.89	Fast

Below Average Average Above Average

HOLSTEIN CONFORMATION

Interbull Type Proof

HUKI 12/23
74% Reliability, 1949 Daughters in 489 Herds

Type Merit	+1.27	Excellent
Mammary	+1.47	Excellent
Legs & Feet	+1.13	Excellent
Stature	+0.72	160 cm
Chest Width	+0.33	Wide
Body Depth	-0.29	Deep
Angularity	+0.60	Open Rib
Rump Angle	-1.12	Low Pins
Rump Width	+1.84	Wide
Rear Leg Side	-0.52	Sickled
Foot Angle	-0.34	Steep
Fore Udder Att	+1.65	Tight
Rear Udder Ht	+2.17	Very High
Udder Support	+1.24	Strong
Udder Depth	+0.79	20cm Above
Front Teat Pl.	-1.29	Close
Teat Length	+0.40	Long
Rear Teat Pl.	+0.51	Close
Locomotion	+1.59	Excellent
Condition Score	+0.16	High

-2 +2

GARRIX

Peak AltaGarrix-ET

HB No: 65003247843748 AI Code: HO7795
 Beta Casein A1A2 Source: USA
 Kappa Casein AB DOB: 07.06.22



Peak AltaGarrix-ET

HOLSTEIN PRODUCTION	
AHDB Dairy	PTA December 2023
Production Reliability 73%	PLI Reliability 66%
PLI	£835
Milk Kg	+908
Fat Kg	+53.3
Fat %	+0.18
Protein Kg	+40.0
Protein %	+0.11
SCI £521	ACI £651 Rel. 66%
Genomic Young Sire Pedigree Index	

- ✔ **+93 Kg Fat + Protein**
- ✔ **Exceptional Rump Width**
- ✔ **High Milk Production**
- ✔ **Reduces Stature**
- ✔ **Modern Pedigree**
- ✔ **Improves Udders**



Kevlow X Zazzle X Huey

MANAGEMENT TRAITS		12/23
Healthy Cow Index	£114	Improver
Enviro Cow Index	+4.1	Improver
Fertility Index	+4.1	Improver
Lifespan	+70	Improver
Somatic Cell Count	-8	Improver
Mastitis	-1	Improver
TB Advantage	+1.8	Desirable
Lameness Index	+1.8	Improver
Maintenance	+3	Desirable
Calf Survival	-1.0	Improver
Direct Calving Ease	+0.2	Easy
Mat. Calving Ease	+1.5	Easy
Gestation Length	-3	Shorter
Digital Dermatitis	+0.0	Improver
Dairy Carcase	+0.6	Improver
Feed Advantage	+112	Improver
Temperament	-0.11	Good
Ease of Milk	+0.38	Fast

Below Average Average Above Average

HOLSTEIN CONFORMATION		HUKI 12/23
Young Genomic Pedigree Index		53% Reliability
Type Merit	+1.09	Excellent
Mammary	+0.88	Excellent
Legs & Feet	+0.55	Excellent
Stature	+0.14	160 cm
Chest Width	+0.59	Wide
Body Depth	-0.34	Deep
Angularity	+1.03	Open Rib
Rump Angle	+0.42	Low Pins
Rump Width	+1.29	Wide
Rear Leg Side	-0.42	Sickled
Foot Angle	+0.14	Steep
Fore Udder Att	+0.65	Tight
Rear Udder Ht	+0.73	Very High
Udder Support	+0.34	Strong
Udder Depth	+0.06	20cm Above
Front Teat Pl.	+0.49	Close
Teat Length	-0.31	Long
Rear Teat Pl.	+0.43	Close
Teat Pos. Side	+0.30	Apart
Locomotion	+0.57	Excellent
Condition Score	-0.17	High

-2 +2

INDIGO

Peak AltaIndigo ET BLF BYF CVF DPF POF RDF CDF

Daughter Proven

HB No: 65003147839890 AI Code: HO5843
 Beta Casein A1A2 Source: USA
 Kappa Casein AE DOB: 21.11.17



HOLSTEIN PRODUCTION	
AHDB Dairy	PTA December 2023
Production Reliability 86%	PLI Reliability 80%
PLI	£529
Milk Kg	+705
Fat Kg	+32.5
Fat %	+0.05
Protein Kg	+27.4
Protein %	+0.05
SCI £266	ACI £407 Rel. 80%
Daughter Proven - 965 Daughters in 174 Herds	

✓ **Daughter Proven**

✓ **Early Classified Daughters scoring highly**

✓ **Great balance of Production and Type**

✓ **Recommended for Robotic Milking**

✓ **Exceptional Teat Length**

✓ **Great Udders**



Imax X Draco X Supersire

MANAGEMENT TRAITS		12/23
Healthy Cow Index	£95	Improver
Enviro Cow Index	+2.4	Improver
Fertility Index	-1.2	Improver
Lifespan	+61	Improver
Somatic Cell Count	-4	Improver
Mastitis	+1	Improver
TB Advantage	+3.3	Desirable
Lameness Index	+2.2	Improver
Maintenance	+13	Desirable
Calf Survival	+3.7	Improver
Direct Calving Ease	-0.4	Easy
Mat. Calving Ease	+1.0	Easy
Gestation Length	-2	Shorter
Digital Dermatitis	+0.4	Improver
Dairy Carcase	+2.0	Improver
Feed Advantage	+1	Improver
Temperament	+0.05	Good
Ease of Milk	+0.40	Fast

Below Average Average Above Average

HOLSTEIN CONFORMATION		HUKI 12/23
Interbull Type Proof		74% Reliability, 135 Daughters in 38 Herds
Type Merit	+1.15	Excellent
Mammary	+1.49	Excellent
Legs & Feet	+0.44	Excellent
Stature	+0.88	160 cm
Chest Width	+1.19	Wide
Body Depth	-0.43	Deep
Angularity	+0.92	Open Rib
Rump Angle	+0.46	Low Pins
Rump Width	+1.18	Wide
Rear Leg Side	+0.37	Sickled
Foot Angle	-0.08	Steep
Fore Udder Att	+0.67	Tight
Rear Udder Ht	+1.67	Very High
Udder Support	+0.85	Strong
Udder Depth	+0.56	20cm Above
Front Teat Pl.	-0.34	Close
Teat Length	+1.28	Long
Rear Teat Pl.	+0.37	Close
Teat Pos. Side	+0.72	Apart
Locomotion	+0.73	Excellent
Condition Score	+0.65	High

-2 +2

KAMARA RED

Koepon AltaKamara Red ET

HB No: 63000577621479 AI Code: HO7402
 Beta Casein A1A1 Source: Holland
 Kappa Casein BE DOB: 01.07.21



HOLSTEIN PRODUCTION	
AHDB Dairy	PTA December 2023
Production Reliability 74%	PLI Reliability 68%
PLI	£659
Milk Kg	+965
Fat Kg	+33.5
Fat %	-0.06
Protein Kg	+27.8
Protein %	-0.04
SCI £325	ACI £485 Rel. 68%
Genomic Young Sire Pedigree Index	

✓ **Top Production Sire**

✓ **Positive Daughter Fertility**

✓ **Super Udders**

✓ **Longevity**

✓ **Improves Rump Width**

✓ **Recommended for Robotic Milking**



Rubels X Altuve X Mr Salvatore

MANAGEMENT TRAITS		12/23
Healthy Cow Index	£210	Improver
Enviro Cow Index	+3.2	Improver
Fertility Index	+3.2	Improver
Lifespan	+134	Improver
Somatic Cell Count	-27	Improver
Mastitis	-2	Improver
TB Advantage	+2.1	Desirable
Lameness Index	+0.8	Improver
Maintenance	+2	Desirable
Calf Survival	+0.9	Improver
Direct Calving Ease	-0.5	Easy
Mat. Calving Ease	+1.1	Easy
Gestation Length	-1	Shorter
Digital Dermatitis	+0.2	Improver
Dairy Carcase	-0.1	Improver
Feed Advantage	+119	Improver
Temperament	+0.55	Good
Ease of Milk	-0.28	Fast

Below Average Average Above Average

HOLSTEIN CONFORMATION		HUKI 12/23
Young Genomic Pedigree Index		58% Reliability
Type Merit	+1.99	Excellent
Mammary	+2.28	Excellent
Legs & Feet	+1.20	Excellent
Stature	+0.66	160 cm
Chest Width	-0.23	Wide
Body Depth	-0.18	Deep
Angularity	+1.60	Open Rib
Rump Angle	-0.40	Low Pins
Rump Width	+1.65	Wide
Rear Leg Side	+2.28	Sickled
Foot Angle	-0.64	Steep
Fore Udder Att	+1.64	Tight
Rear Udder Ht	+2.39	Very High
Udder Support	+0.06	Strong
Udder Depth	+1.58	20cm Above
Front Teat Pl.	+1.12	Close
Teat Length	-0.14	Long
Rear Teat Pl.	-0.61	Close
Teat Pos. Side	-0.10	Apart
Locomotion	+1.00	Excellent
Condition Score	-0.96	High

-2 +2

KEVLOW

Peak AltaKevlow ET BYF CVF POF RDF CDF

HB No: 65003212150639 AI Code: HO7217
 Beta Casein A1A1 Source: USA
 Kappa Casein BE DOB: 25.06.20



Dam: Peak Eleanor ET

HOLSTEIN PRODUCTION

AHDB Dairy PTA December 2023
 Production Reliability 73% PLI Reliability 66%

PLI	£787
Milk Kg	+796
Fat Kg	+49.5
Fat %	+0.19
Protein Kg	+36.2
Protein %	+0.11
SCI £511	ACI £632 Rel. 66%
<i>Genomic Young Sire Pedigree Index</i>	



PLI



Lowers Stature



Kgs Milk



Robotic Milking



+85.7 Kgs Components



Management Traits



Plinko X Marius X Duke

MANAGEMENT TRAITS		12/23
Healthy Cow Index	£117	Improver
Enviro Cow Index	+3.8	Improver
Fertility Index	+5.0	Improver
Lifespan	+55	Improver
Somatic Cell Count	-17	Improver
Mastitis	-2	Improver
TB Advantage	+2.7	Desirable
Lameness Index	+1.4	Improver
Maintenance	-2	Desirable
Calf Survival	-1.7	Improver
Direct Calving Ease	+0.1	Easy
Mat. Calving Ease	+1.3	Easy
Gestation Length	-5	Shorter
Digital Dermatitis	-0.1	Improver
Dairy Carcase	+0.1	Improver
Feed Advantage	+123	Improver
Temperament	+0.84	Good
Ease of Milk	-0.24	Fast

Below Average Average Above Average

HOLSTEIN CONFORMATION

Young Genomic Pedigree Index		HUKI 12/23
		55% Reliability
Type Merit	+0.68	Excellent
Mammary	+0.66	Excellent
Legs & Feet	+0.13	Excellent
Stature	+0.34	160 cm
Chest Width	-0.31	Wide
Body Depth	-0.90	Deep
Angularity	+1.47	Open Rib
Rump Angle	+0.04	Low Pins
Rump Width	+0.78	Wide
Rear Leg Side	-0.06	Sickled
Foot Angle	+0.12	Steep
Fore Udder Att	+0.31	Tight
Rear Udder Ht	+0.54	Very High
Udder Support	+0.16	Strong
Udder Depth	+0.27	20cm Abve
Front Teat Pl.	-0.38	Close
Teat Length	-0.41	Long
Rear Teat Pl.	-0.14	Close
Teat Pos. Side	+0.81	Apart
Locomotion	-0.04	Excellent
Condition Score	-0.59	High

-2 +2

MASQUERADE

Peak AltaMasquerade ET BLF BYF CVF DPF CDF

HB No: 65003247843505 AI Code: HO7760
 Beta Casein A1A2 Source: USA
 Kappa Casein AE DOB: 08.04.22



Peak AltaMasquerade ET

HOLSTEIN PRODUCTION

AHDB Dairy PTA December 2023
 Production Reliability 73% PLI Reliability 66%

PLI	£817
Milk Kg	+634
Fat Kg	+44.8
Fat %	+0.22
Protein Kg	+30.1
Protein %	+0.10
SCI £562	ACI £698
Rel. 66%	
Genomic Young Sire Pedigree Index	

- ✓ **Daughter Fertility +10**
- ✓ **Lowers Rump Angle**
- ✓ **Components**
- ✓ **Top PLI + TPI Sire**
- ✓ **Lowers Stature**
- ✓ **Robotic Milking**



Kevlow X Pursuit X Medley

MANAGEMENT TRAITS		12/23
Healthy Cow Index	£226	Improver
Enviro Cow Index	+3.9	Improver
Fertility Index	+10.0	Improver
Lifespan	+137	Improver
Somatic Cell Count	-21	Improver
Mastitis	-1	Improver
TB Advantage	+2.4	Desirable
Lameness Index	+1.6	Improver
Maintenance	-4	Desirable
Calf Survival	+0.0	Improver
Direct Calving Ease	-0.1	Easy
Mat. Calving Ease	+1.4	Easy
Gestation Length	-4	Shorter
Digital Dermatitis	+0.2	Improver
Dairy Carcase	+0.8	Improver
Feed Advantage	+115	Improver
Temperament	+0.71	Good
Ease of Milk	+0.67	Fast

Below Average Average Above Average

HOLSTEIN CONFORMATION		HUKI 12/23
Young Genomic Pedigree Index		53% Reliability
Type Merit	+1.07	Excellent
Mammary	+0.76	Excellent
Legs & Feet	+1.11	Excellent
Stature	-0.05	160 cm
Chest Width	-0.26	Wide
Body Depth	-1.36	Deep
Angularity	+0.64	Open Rib
Rump Angle	+1.22	Low Pins
Rump Width	+0.07	Wide
Rear Leg Side	+0.41	Sickled
Foot Angle	-0.46	Steep
Fore Udder Att	-0.09	Tight
Rear Udder Ht	+0.63	Very High
Udder Support	+0.11	Strong
Udder Depth	+0.25	20cm Above
Front Teat Pl.	+0.00	Close
Teat Length	-0.15	Long
Rear Teat Pl.	-0.07	Close
Teat Pos. Side	+1.09	Apart
Locomotion	+1.05	Excellent
Condition Score	-0.15	High

-2 +2



Calf's Choice Total[®] 100

COLOSTRUM SUPPLEMENT & REPLACER

WHOLE BOVINE COLOSTRUM

Made with natural whole bovine colostrum. Not a manufactured formula based on whey, egg or other ingredients not naturally found in maternal colostrum.

An excellent source of essential colostrum protein, growth factors, and nutrients required by calves to optimize growth and reach genetic potential.

RICH IN COLOSTRAL FAT

An important energy source required by calves immediately after birth. Colostral fat is proven to help calves maintain body temperature through harsh hot or cold environmental conditions.

SAFE AND EFFECTIVE

Rigorously tested for safety and efficacy, it is free from TB, EBL, BVDV, IBR, Johne's, E.Coli, Salmonella and Brucella. GMP+ Feed Safety Assurance Assured.




SOURCED FROM LOCAL DAIRIES

CCT 100 is sourced from local dairy farms in Scotland & EU.

CONVENIENT

Easily mixes in under 15 seconds!
3-year shelf life.



-  **MADE WITH WHOLE BOVINE COLOSTRUM**
-  **HIGH IN ESSENTIAL COLOSTRAL PROTEIN**
-  **PURE COLOSTRAL FAT**



AI SERVICES
- NORTHERN IRELAND -

For further information, contact your local Breeding Specialist.

PELEGRINO

Pellegrino BLF BYF CVF MFF

Sexed and Conventional

HB No: 71007253843259 AI Code: HO6761
 Beta Casein A1A1 Source: France
 Kappa Casein AA DOB: 30.10.19



3D: Compass-Trt Amrica Jabra ET VG85

HOLSTEIN PRODUCTION	
AHDB Dairy	PTA December 2023
Production Reliability 73%	PLI Reliability 67%
PLI	£682
Milk Kg	+835
Fat Kg	+31.0
Fat %	-0.03
Protein Kg	+26.7
Protein %	-0.01
SCI £384	ACI £558 Rel. 67%
Genomic Young Sire Pedigree Index	

✓ **Udders**

✓ **Fertility Index**

✓ **Production**

✓ **Lifespan**

✓ **Healthy Cow Index**

✓ **Lowers SCC**

SYNETICS

Topnotch X Router X Muscadet

MANAGEMENT TRAITS		12/23
Healthy Cow Index	£286	Improver
Enviro Cow Index	+2.8	Improver
Fertility Index	+8.8	Improver
Lifespan	+162	Improver
Somatic Cell Count	-26	Improver
Mastitis	-2	Improver
TB Advantage	+1.1	Desirable
Lameness Index	+2.4	Improver
Maintenance	+13	Desirable
Calf Survival	+2.6	Improver
Direct Calving Ease	-0.6	Easy
Mat. Calving Ease	+1.1	Easy
Gestation Length	-2	Shorter
Digital Dermatitis	+0.3	Improver
Dairy Carcase	+1.7	Improver
Feed Advantage	-13	Improver
Temperament	+1.58	Good
Ease of Milk	-0.12	Fast

Below Average Average Above Average

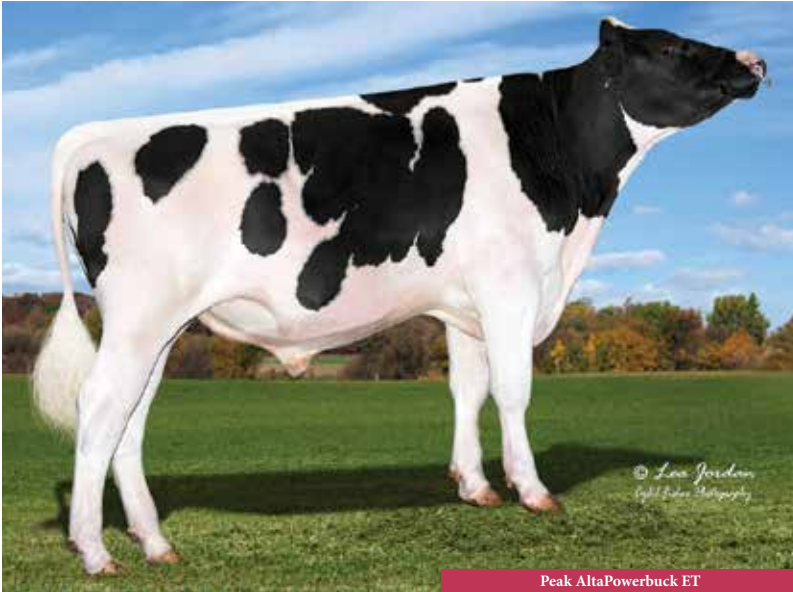
HOLSTEIN CONFORMATION		HUKI 12/23
Young Genomic Pedigree Index		56% Reliability
Type Merit	+1.24	Excellent
Mammary	+2.09	Excellent
Legs & Feet	+0.71	Excellent
Stature	+1.20	160 cm
Chest Width	+0.48	Wide
Body Depth	+0.31	Deep
Angularity	+0.54	Open Rib
Rump Angle	+0.40	Low Pins
Rump Width	+1.07	Wide
Rear Leg Side	-0.44	Sickled
Foot Angle	-0.15	Steep
Fore Udder Att	+1.75	Tight
Rear Udder Ht	+2.27	Very High
Udder Support	+1.42	Strong
Udder Depth	+1.82	20cm Above
Front Teat Pl.	-0.36	Close
Teat Length	-0.17	Long
Rear Teat Pl.	+0.78	Close
Teat Pos. Side	+0.48	Apart
Locomotion	+0.42	Excellent
Condition Score	+1.09	High

-2 +2

POWERBUCK

Peak AltaPowerbuck ET

HB No: 65003213001199 AI Code: HO7219
 Beta Casein A1A2 Source: USA
 Kappa Casein AB DOB: 12.09.20



Peak AltaPowerbuck ET

HOLSTEIN PRODUCTION

AHDB Dairy PTA December 2023
 Production Reliability 73% PLI Reliability 67%

PLI	£713
Milk Kg	+951
Fat Kg	+31.0
Fat %	-0.08
Protein Kg	+28.2
Protein %	-0.03
SCI £412	ACI £573
Rel. 67%	
Genomic Young Sire Pedigree Index	

✓ **Production**

✓ **Chest Width**

✓ **Healthy Cow Index**

✓ **Robotic Milking**

✓ **Daughter Fertility**

✓ **Lifespan**



Tiki X Pursuit X Medley

MANAGEMENT TRAITS		12/23
Healthy Cow Index	£266	Improver
Enviro Cow Index	+3.3	Improver
Fertility Index	+10.2	Improver
Lifespan	+180	Improver
Somatic Cell Count	-22	Improver
Mastitis	-2	Improver
TB Advantage	+2.1	Desirable
Lameness Index	+1.9	Improver
Maintenance	+4	Desirable
Calf Survival	-0.2	Improver
Direct Calving Ease	-0.2	Easy
Mat. Calving Ease	+1.6	Easy
Gestation Length	-3	Shorter
Digital Dermatitis	+0.1	Improver
Dairy Carcase	+2.1	Improver
Feed Advantage	+74	Improver
Temperament	-0.03	Good
Ease of Milk	+0.60	Fast

Below Average Average Above Average

HOLSTEIN CONFORMATION

Young Genomic Pedigree Index HUKI 12/23 55% Reliability

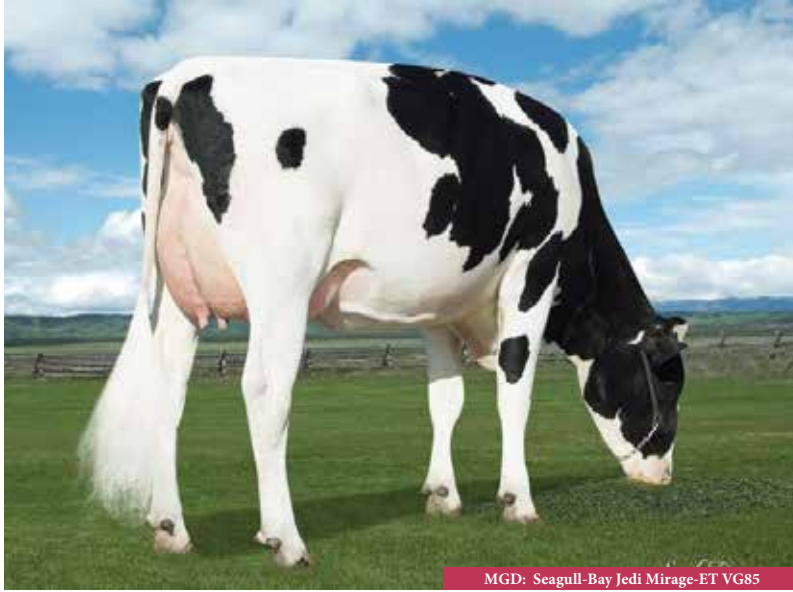
Type Merit	+1.49	Excellent
Mammary	+1.65	Excellent
Legs & Feet	+0.96	Excellent
Stature	-0.45	160 cm
Chest Width	+1.35	Wide
Body Depth	-0.90	Deep
Angularity	-0.29	Open Rib
Rump Angle	+0.13	Low Pins
Rump Width	+0.65	Wide
Rear Leg Side	-0.49	Sickled
Foot Angle	+0.14	Steep
Fore Udder Att	+1.12	Tight
Rear Udder Ht	+1.35	Very High
Udder Support	-0.17	Strong
Udder Depth	+0.73	20cm Above
Front Teat Pl.	-0.25	Close
Teat Length	+0.13	Long
Rear Teat Pl.	-0.41	Close
Teat Pos. Side	+0.83	Apart
Locomotion	+1.10	Excellent
Condition Score	+1.85	High

-2 +2

REGULUS

Winstar AltaRegulus ET BYF CVF POF RDF CDF

HB No: 65003212150609 AI Code: HO6888
 Beta Casein A2A2 Source: USA
 Kappa Casein BB DOB: 06.06.20



MGD: Seagull-Bay Jedi Mirage-ET VG85

HOLSTEIN PRODUCTION	
AHDB Dairy	PTA December 2023
Production Reliability 73%	PLI Reliability 67%
PLI	£755
Milk Kg	+445
Fat Kg	+48.1
Fat %	+0.35
Protein Kg	+27.6
Protein %	+0.15
SCI £509	ACI £644 Rel. 67%
Genomic Young Sire Pedigree Index	

✓ **Components**

✓ **Rump Width**

✓ **+0.35% Fat**

✓ **PLI**

✓ **Strong Robust Cows**

✓ **Udder Attachment**



Zazzle X Crimson X Jedi

MANAGEMENT TRAITS		12/23
Healthy Cow Index	£189	Improver
Enviro Cow Index	+3.3	Improver
Fertility Index	+5.6	Improver
Lifespan	+88	Improver
Somatic Cell Count	-20	Improver
Mastitis	-2	Improver
TB Advantage	+1.2	Desirable
Lameness Index	+1.8	Improver
Maintenance	+9	Desirable
Calf Survival	+3.1	Improver
Direct Calving Ease	-1.4	Easy
Mat. Calving Ease	+1.5	Easy
Gestation Length	-1	Shorter
Digital Dermatitis	-0.1	Improver
Dairy Carcase	+1.1	Improver
Feed Advantage	+39	Improver
Temperament	-0.24	Good
Ease of Milk	+1.18	Fast

Below Average Average Above Average

HOLSTEIN CONFORMATION		HUKI 12/23
Young Genomic Pedigree Index		55% Reliability
Type Merit	+0.36	Excellent
Mammary	+1.11	Excellent
Legs & Feet	-0.19	Excellent
Stature	+0.74	160 cm
Chest Width	+0.48	Wide
Body Depth	-0.70	Deep
Angularity	+0.14	Open Rib
Rump Angle	+0.89	Low Pins
Rump Width	+1.02	Wide
Rear Leg Side	-0.57	Sickled
Foot Angle	+0.63	Steep
Fore Udder Att	+1.20	Tight
Rear Udder Ht	+0.40	Very High
Udder Support	-0.33	Strong
Udder Depth	+1.43	20cm Above
Front Teat Pl.	+0.63	Close
Teat Length	+0.04	Long
Rear Teat Pl.	+0.38	Close
Teat Pos. Side	-0.34	Apart
Locomotion	-0.37	Excellent
Condition Score	+0.13	High

-2 +2

ROLLER

Roller

HB No: 60001406806668

AI Code:

Beta Casein A1A2

Source: Germany

Kappa Casein

DOB: 30.09.22



HOLSTEIN PRODUCTION	
AHDB Dairy	PTA December 2023
Production Reliability 73%	PLI Reliability 67%
PLI	£760
Milk Kg	+632
Fat Kg	+32.0
Fat %	+0.13
Protein Kg	+42.2
Protein %	+0.19
SCI £485	ACI £617 Rel. 67%
Genomic Young Sire Pedigree Index	

- ✓ **Component Specialist**
- ✓ **Snugly attached Udders**
- ✓ **Outcross Pedigree**
- ✓ **Improves Longevity**
- ✓ **Strong Robust Cows**
- ✓ **Excellent Allrounder**

SYNETICS

Ridercup X Copyright X Bubba

MANAGEMENT TRAITS		12/23
Healthy Cow Index	£163	Improver
Enviro Cow Index	+3.8	Improver
Fertility Index	+4.5	Improver
Lifespan	+125	Improver
Somatic Cell Count	-17	Improver
Mastitis	-1	Improver
TB Advantage	+1.8	Desirable
Lameness Index	+1.7	Improver
Maintenance	+5	Desirable
Calf Survival	-0.3	Improver
Direct Calving Ease	-0.3	Easy
Mat. Calving Ease	+1.3	Easy
Gestation Length	+0	Shorter
Digital Dermatitis	+0.1	Improver
Dairy Carcase	n/a	Improver
Feed Advantage	+88	Improver
Temperament	+0.59	Good
Ease of Milk	-0.25	Fast

Below Average Average Above Average

HOLSTEIN CONFORMATION		HUKI 12/23
Young Genomic Pedigree Index		53% Reliability
Type Merit	+1.07	Excellent
Mammary	+1.16	Excellent
Legs & Feet	+0.50	Excellent
Stature	+0.07	160 cm
Chest Width	+0.81	Wide
Body Depth	-0.07	Deep
Angularity	+0.31	Open Rib
Rump Angle	+0.99	Low Pins
Rump Width	+0.49	Wide
Rear Leg Side	-1.08	Sickled
Foot Angle	+1.26	Steep
Fore Udder Att	+0.89	Tight
Rear Udder Ht	+1.31	Very High
Udder Support	+0.28	Strong
Udder Depth	+0.95	20cm Above
Front Teat Pl.	+0.07	Close
Teat Length	-0.55	Long
Rear Teat Pl.	-0.27	Close
Teat Pos. Side	+0.07	Apart
Locomotion	+0.28	Excellent
Condition Score	+0.91	High

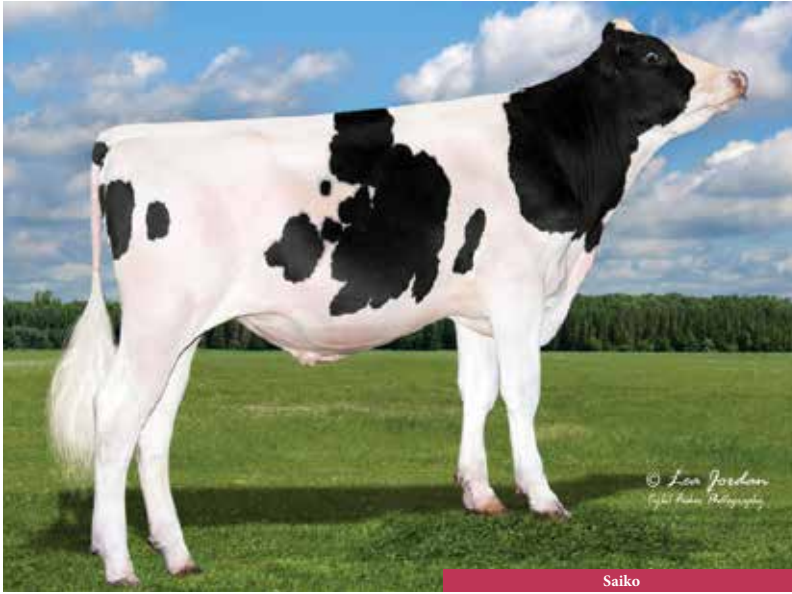
-2 +2

SAIKO

Peak Saiko

Sexed and Conventional

HB No: 65003235932953 AI Code: HO7638
 Beta Casein A1A2 Source: USA
 Kappa Casein AA DOB: 16.08.21



HOLSTEIN PRODUCTION	
AHDB Dairy	PTA December 2023
Production Reliability 73%	PLI Reliability 66%
PLI	£702
Milk Kg	+776
Fat Kg	+35.5
Fat %	+0.05
Protein Kg	+29.3
Protein %	+0.04
SCI £423	ACI £571 Rel. 66%
Genomic Young Sire Pedigree Index	

- ✓ **High Ranking PLI + TPI**
- ✓ **Calving Ease**
- ✓ **Production**
- ✓ **Daughter Fertility**
- ✓ **Ideal Rump Structure**
- ✓ **Strong Robust Cows**

SYNETICS

Magnifique X Pursuit X Medley

MANAGEMENT TRAITS		12/23
Healthy Cow Index	£196	Improver
Enviro Cow Index	+3.5	Improver
Fertility Index	+8.5	Improver
Lifespan	+149	Improver
Somatic Cell Count	-19	Improver
Mastitis	-1	Improver
TB Advantage	+2.3	Desirable
Lameness Index	+0.7	Improver
Maintenance	+8	Desirable
Calf Survival	-0.5	Improver
Direct Calving Ease	-0.1	Easy
Mat. Calving Ease	+1.3	Easy
Gestation Length	-1	Shorter
Digital Dermatitis	-0.1	Improver
Dairy Carcase	+1.0	Improver
Feed Advantage	+82	Improver
Temperament	+0.52	Good
Ease of Milk	-0.13	Fast

Below Average Average Above Average

HOLSTEIN CONFORMATION		HUKI 12/23
Young Genomic Pedigree Index		53% Reliability
Type Merit	+0.78	Excellent
Mammary	+0.74	Excellent
Legs & Feet	+0.48	Excellent
Stature	+0.14	160 cm
Chest Width	+1.09	Wide
Body Depth	-0.12	Deep
Angularity	+0.11	Open Rib
Rump Angle	+1.44	Low Pins
Rump Width	+0.78	Wide
Rear Leg Side	+0.33	Sickled
Foot Angle	-0.06	Steep
Fore Udder Att	+0.04	Tight
Rear Udder Ht	+0.31	Very High
Udder Support	+0.51	Strong
Udder Depth	+0.13	20cm Above
Front Teat Pl.	+0.67	Close
Teat Length	-0.37	Long
Rear Teat Pl.	+1.36	Close
Teat Pos. Side	+1.40	Apart
Locomotion	+0.52	Excellent
Condition Score	+1.24	High

-2 +2

SKOVLY P

VH Slatt Skovly P BLF BYF CVF POC CDF

HB No: 6100000261780 AI Code: HO7345
 Beta Casein A2A2 Source: Denmark
 Kappa Casein BB DOB: 27.05.20



Skovly P

HOLSTEIN PRODUCTION

AHDB Dairy PTA December 2023
 Production Reliability 73% PLI Reliability 67%

PLI	£627
Milk Kg	+396
Fat Kg	+29.2
Fat %	+0.15
Protein Kg	+24.7
Protein %	+0.13
SCI £460	ACI £558 Rel. 67%
<i>Genomic Young Sire Pedigree Index</i>	



Components



Outcross Pedigree



Improves Milking Speed



Udders



Fertility Index



Teat Length



Slatt P X Nerd RC X Balisto

MANAGEMENT TRAITS		12/23
Healthy Cow Index	£185	Improver
Enviro Cow Index	+2.5	Improver
Fertility Index	+8.4	Improver
Lifespan	+61	Improver
Somatic Cell Count	-12	Improver
Mastitis	-1	Improver
TB Advantage	+1.0	Desirable
Lameness Index	+2.0	Improver
Maintenance	+0	Desirable
Calf Survival	+0.8	Improver
Direct Calving Ease	+0.1	Easy
Mat. Calving Ease	+1.0	Easy
Gestation Length	+0	Shorter
Digital Dermatitis	+0.4	Improver
Dairy Carcase	+1.1	Improver
Feed Advantage	+36	Improver
Temperament	-0.54	Good
Ease of Milk	+1.25	Fast

Below Average Average Above Average

HOLSTEIN CONFORMATION

Young Genomic Pedigree Index		HUKI 12/23
		54% Reliability
Type Merit	+1.11	Excellent
Mammary	+1.43	Excellent
Legs & Feet	+1.18	Excellent
Stature	+0.65	160 cm
Chest Width	-0.77	Wide
Body Depth	-0.75	Deep
Angularity	+0.58	Open Rib
Rump Angle	-1.00	Low Pins
Rump Width	+1.04	Wide
Rear Leg Side	-0.15	Sickled
Foot Angle	+0.88	Steep
Fore Udder Att	+1.22	Tight
Rear Udder Ht	+1.34	Very High
Udder Support	+0.54	Strong
Udder Depth	+2.05	20cm Above
Front Teat Pl.	+0.59	Close
Teat Length	+0.33	Long
Rear Teat Pl.	+1.14	Close
Teat Pos. Side	+0.66	Apart
Locomotion	+0.85	Excellent
Condition Score	+0.59	High

-2 +2

SPLINK

Splink BLF BYF CVF MFF

Sexed and Conventional

HB No: 71003616641325 AI Code: HO7637
 Beta Casein A2A2 Source: France
 Kappa Casein AA DOB: 13.08.21



HOLSTEIN PRODUCTION	
AHDB Dairy Production Reliability 73%	PTA December 2023 PLI Reliability 66%
PLI	£731
Milk Kg	+552
Fat Kg	+42.4
Fat %	+0.23
Protein Kg	+28.5
Protein %	+0.12
SCI £503	ACI £615 Rel. 66%
Genomic Young Sire Pedigree Index	

✓ **Excellent Sire Stack**

✓ **Impressive Udders**

✓ **High Kg + % Fat + Protein**

✓ **Calving Ease**

✓ **Improves Teat Length**

✓ **Improves Milking Speed**

SYNETICS

Plinko X Pursuit X Hotline

MANAGEMENT TRAITS		12/23
Healthy Cow Index	£169	Improver
Enviro Cow Index	+3.5	Improver
Fertility Index	+8.1	Improver
Lifespan	+82	Improver
Somatic Cell Count	-11	Improver
Mastitis	-1	Improver
TB Advantage	+1.8	Desirable
Lameness Index	+2.8	Improver
Maintenance	-3	Desirable
Calf Survival	-0.5	Improver
Direct Calving Ease	+0.1	Easy
Mat. Calving Ease	+1.5	Easy
Gestation Length	-3	Shorter
Digital Dermatitis	+0.2	Improver
Dairy Carcase	+0.5	Improver
Feed Advantage	+112	Improver
Temperament	-0.05	Good
Ease of Milk	+1.01	Fast

Below Average Average Above Average

HOLSTEIN CONFORMATION		HUKI 12/23 55% Reliability
Young Genomic Pedigree Index		
Type Merit	+1.12	Excellent
Mammary	+0.86	Excellent
Legs & Feet	+0.70	Excellent
Stature	+0.23	160 cm
Chest Width	-0.26	Wide
Body Depth	-0.30	Deep
Angularity	+1.54	Open Rib
Rump Angle	-0.64	Low Pins
Rump Width	+0.40	Wide
Rear Leg Side	+1.29	Sickled
Foot Angle	-0.58	Steep
Fore Udder Att	+0.17	Tight
Rear Udder Ht	+0.99	Very High
Udder Support	+0.90	Strong
Udder Depth	-0.29	20cm Above
Front Teat Pl.	-0.04	Close
Teat Length	+1.33	Long
Rear Teat Pl.	+0.53	Close
Teat Pos. Side	+1.39	Apart
Locomotion	+0.75	Excellent
Condition Score	-0.74	High

-2 +2

SULIEN

Peak AltaSulien ET BYF CVF POF RDF CDF

Sexed and Conventional

HB No: 65003209641528 AI Code: HO7429
 Beta Casein A1A2 Source: USA
 Kappa Casein AB DOB: 26.10.19



HOLSTEIN PRODUCTION	
AHDB Dairy	PTA December 2023
Production Reliability 74%	PLI Reliability 68%
PLI	£705
Milk Kg	+464
Fat Kg	+36.6
Fat %	+0.21
Protein Kg	+26.8
Protein %	+0.13
SCI £440	ACI £571 Rel. 68%
Genomic Young Sire Pedigree Index	

- ✓ **Robotic Milking**
- ✓ **Longevity Improver**
- ✓ **Excellent Legs + Feet**
- ✓ **Management Traits**
- ✓ **Components**
- ✓ **Locomotion**

Pursuit X Robson X Denver

MANAGEMENT TRAITS		12/23
Healthy Cow Index	£199	Improver
Enviro Cow Index	+3.4	Improver
Fertility Index	+4.5	Improver
Lifespan	+137	Improver
Somatic Cell Count	-18	Improver
Mastitis	-2	Improver
TB Advantage	+2.7	Desirable
Lameness Index	+2.0	Improver
Maintenance	+10	Desirable
Calf Survival	+0.3	Improver
Direct Calving Ease	-0.5	Easy
Mat. Calving Ease	+0.9	Easy
Gestation Length	-2	Shorter
Digital Dermatitis	+0.3	Improver
Dairy Carcase	+0.9	Improver
Feed Advantage	+52	Improver
Temperament	+0.34	Good
Ease of Milk	+0.81	Fast

Below Average Average Above Average



HOLSTEIN CONFORMATION		HUKI 12/23
Young Genomic Pedigree Index		57% Reliability
Type Merit	+1.57	Excellent
Mammary	+1.04	Excellent
Legs & Feet	+1.63	Excellent
Stature	+0.39	160 cm
Chest Width	+1.24	Wide
Body Depth	+0.58	Deep
Angularity	+0.73	Open Rib
Rump Angle	+0.30	Low Pins
Rump Width	+1.14	Wide
Rear Leg Side	+0.50	Sickled
Foot Angle	-0.20	Steep
Fore Udder Att	+0.36	Tight
Rear Udder Ht	+0.85	Very High
Udder Support	-0.24	Strong
Udder Depth	+0.26	20cm Above
Front Teat Pl.	+0.37	Close
Teat Length	+0.36	Long
Rear Teat Pl.	-0.65	Close
Teat Pos. Side	+0.85	Apart
Locomotion	+1.93	Excellent
Condition Score	+0.74	High

-2 +2



HOLSTEIN PRODUCTION	
AHDB Dairy	PTA December 2023
Production Reliability 73%	PLI Reliability 66%
PLI	£765
Milk Kg	+676
Fat Kg	+47.9
Fat %	+0.23
Protein Kg	+31.4
Protein %	+0.10
SCI £446	ACI £592 Rel. 66%
Genomic Young Sire Pedigree Index	

- ✓ **Strong Robust Cows**
- ✓ **Milking Speed**
- ✓ **Improves Rump Width**
- ✓ **Udders**
- ✓ **Component Specialist**
- ✓ **Lowers SCC**

SYNETICS

Magnifique X Zazzle X Lawson

MANAGEMENT TRAITS		12/23
Healthy Cow Index	£185	Improver
Enviro Cow Index	+3.5	Improver
Fertility Index	+5.2	Improver
Lifespan	+107	Improver
Somatic Cell Count	-22	Improver
Mastitis	-2	Improver
TB Advantage	+2.7	Desirable
Lameness Index	+1.7	Improver
Maintenance	+20	Desirable
Calf Survival	+0.1	Improver
Direct Calving Ease	+0.0	Easy
Mat. Calving Ease	+1.5	Easy
Gestation Length	-4	Shorter
Digital Dermatitis	+0.2	Improver
Dairy Carcase	+0.5	Improver
Feed Advantage	+33	Improver
Temperament	-0.09	Good
Ease of Milk	+0.85	Fast

Below Average Average Above Average

HOLSTEIN CONFORMATION		HUKI 12/23
Young Genomic Pedigree Index		53% Reliability
Type Merit	+1.08	Excellent
Mammary	+1.08	Excellent
Legs & Feet	+0.64	Excellent
Stature	+1.13	160 cm
Chest Width	+1.84	Wide
Body Depth	+1.02	Deep
Angularity	+1.14	Open Rib
Rump Angle	+1.55	Low Pins
Rump Width	+1.81	Wide
Rear Leg Side	+0.73	Sickled
Foot Angle	-0.08	Steep
Fore Udder Att	+1.36	Tight
Rear Udder Ht	+0.86	Very High
Udder Support	-0.15	Strong
Udder Depth	+0.76	20cm Above
Front Teat Pl.	+1.25	Close
Teat Length	-0.52	Long
Rear Teat Pl.	+1.06	Close
Teat Pos. Side	-0.06	Apart
Locomotion	+0.58	Excellent
Condition Score	+0.19	High

-2 +2

TRY

Trent-Way-JS AltaTry Red ET BLF BYF CVF POF CDF

HB No: 65003213815980 AI Code: HO7215
 Beta Casein A1A1 Source: USA
 Kappa Casein BB DOB: 17.06.20



Trent-Way-JS AltaTry Red ET

HOLSTEIN PRODUCTION

AHDB Dairy PTA December 2023
 Production Reliability 73% PLI Reliability 66%

PLI	£507
Milk Kg	+637
Fat Kg	+28.8
Fat %	+0.04
Protein Kg	+29.0
Protein %	+0.09
SCI £283	ACI £398 Rel. 66%
<i>Genomic Young Sire Pedigree Index</i>	

✓ **Udders**

✓ **Production**

✓ **Type**

✓ **Milking Speed**

✓ **Strength**

✓ **Outcross Pedigree**



Tomcruise X Royal X Silver

MANAGEMENT TRAITS		12/23
Healthy Cow Index	£69	Improver
Enviro Cow Index	+2.2	Improver
Fertility Index	+1.1	Improver
Lifespan	+31	Improver
Somatic Cell Count	-9	Improver
Mastitis	+1	Improver
TB Advantage	+0.2	Desirable
Lameness Index	+1.4	Improver
Maintenance	+12	Desirable
Calf Survival	+0.5	Improver
Direct Calving Ease	-1.1	Easy
Mat. Calving Ease	+0.8	Easy
Gestation Length	-3	Shorter
Digital Dermatitis	+0.4	Improver
Dairy Carcase	+0.6	Improver
Feed Advantage	-8	Improver
Temperament	0.79	Good
Ease of Milk	+1.69	Fast

Below Average Average Above Average

HOLSTEIN CONFORMATION		HUKI 12/23
Young Genomic Pedigree Index		54% Reliability
Type Merit	+1.27	Excellent
Mammary	+1.87	Excellent
Legs & Feet	+0.42	Excellent
Stature	+0.94	160 cm
Chest Width	+0.78	Wide
Body Depth	+0.84	Deep
Angularity	+0.95	Open Rib
Rump Angle	-0.43	Low Pins
Rump Width	+0.90	Wide
Rear Leg Side	-1.39	Sickled
Foot Angle	+0.69	Steep
Fore Udder Att	+1.64	Tight
Rear Udder Ht	+1.82	Very High
Udder Support	+1.15	Strong
Udder Depth	+1.03	20cm Above
Front Teat Pl.	+0.92	Close
Teat Length	-0.95	Long
Rear Teat Pl.	+1.06	Close
Teat Pos. Side	+0.95	Apart
Locomotion	+0.52	Excellent
Condition Score	+0.40	High

-2 +2

VANCE

Progenesis Vance ET BLF BYF CVF DPF CDF

Per Order
Allow 6 weeks delivery

HB No: 65003252197819 AI Code: HO7864
Beta Casein A2A2 Source: USA
Kappa Casein BB DOB: 16.08.22



Progenesis Vance ET

HOLSTEIN PRODUCTION	
AHDB Dairy	PTA December 2023
Production Reliability 73%	PLI Reliability 66%
PLI	£818
Milk Kg	+900
Fat Kg	+45.3
Fat %	+0.10
Protein Kg	+39.1
Protein %	+0.10
SCI £493	ACI £630 Rel. 66%
Genomic Young Sire Pedigree Index	

- ✓ **Top Production Sire +900 Kg Milk**
- ✓ **Great daughter fertility**
- ✓ **+84 Kg Fat + Protein**
- ✓ **Excellent Locomotion**
- ✓ **Exceptional in all Type traits**
- ✓ **Snugly attached Udders**



Holysmokes X Plinko X Crimson

MANAGEMENT TRAITS		12/23
Healthy Cow Index	£159	Improver
Enviro Cow Index	+3.7	Improver
Fertility Index	+7.2	Improver
Lifespan	+70	Improver
Somatic Cell Count	-17	Improver
Mastitis	-1	Improver
TB Advantage	+0.7	Desirable
Lameness Index	+1.7	Improver
Maintenance	+10	Desirable
Calf Survival	-0.6	Improver
Direct Calving Ease	-0.7	Easy
Mat. Calving Ease	+1.2	Easy
Gestation Length	-1	Shorter
Digital Dermatitis	+0.3	Improver
Dairy Carcase	+1.7	Improver
Feed Advantage	+85	Improver
Temperament	-0.02	Good
Ease of Milk	-0.85	Fast

Below Average Average Above Average

HOLSTEIN CONFORMATION		HUKI 12/23
Young Genomic Pedigree Index		53% Reliability
Type Merit	+1.30	Excellent
Mammary	+1.09	Excellent
Legs & Feet	+1.02	Excellent
Stature	+0.79	160 cm
Chest Width	+0.85	Wide
Body Depth	+0.51	Deep
Angularity	+1.40	Open Rib
Rump Angle	+0.28	Low Pins
Rump Width	+0.63	Wide
Rear Leg Side	-0.08	Sickled
Foot Angle	+0.65	Steep
Fore Udder Att	+0.73	Tight
Rear Udder Ht	+1.13	Very High
Udder Support	+0.87	Strong
Udder Depth	+0.10	20cm Above
Front Teat Pl.	+0.48	Close
Teat Length	-0.25	Long
Rear Teat Pl.	+1.35	Close
Teat Pos. Side	+1.37	Apart
Locomotion	+1.15	Excellent
Condition Score	+0.16	High

-2 +2

VANDYKE

Progenesis AltaVandyke ET BLF BYF CVF DPF CDF

HB No: 65003247843547 AI Code: HO7876
 Beta Casein A2A2 Source: USA
 Kappa Casein BB DOB: 20.04.22



Paternal 4th Dam: Clear-Echo Ovation ET

HOLSTEIN PRODUCTION	
AHDB Dairy	PTA December 2023
Production Reliability 73%	PLI Reliability 66%
PLI	£887
Milk Kg	+937
Fat Kg	+55.6
Fat %	+0.20
Protein Kg	+38.4
Protein %	+0.08
SCI £516	ACI £674 Rel. 66%
Genomic Young Sire Pedigree Index	

- ✓ **+94 Kg Fat + Protein**
- ✓ **Sire of Sons**
- ✓ **Over 900 Kgs Milk**
- ✓ **Improves all Management traits**
- ✓ **No. 5 PLI Sire**
- ✓ **Recommended for Robotic Milking**



Zemini X Plinko X Crimson

MANAGEMENT TRAITS		12/23
Healthy Cow Index	£171	Improver
Enviro Cow Index	+4.4	Improver
Fertility Index	+2.3	Improver
Lifespan	+110	Improver
Somatic Cell Count	-26	Improver
Mastitis	-2	Improver
TB Advantage	+0.4	Desirable
Lameness Index	+2.7	Improver
Maintenance	+6	Desirable
Calf Survival	+0.7	Improver
Direct Calving Ease	-0.6	Easy
Mat. Calving Ease	+1.3	Easy
Gestation Length	-1	Shorter
Digital Dermatitis	+0.5	Improver
Dairy Carcase	+1.1	Improver
Feed Advantage	+129	Improver
Temperament	+0.45	Good
Ease of Milk	+0.44	Fast

Below Average Average Above Average

HOLSTEIN CONFORMATION		HUKI 12/23
Young Genomic Pedigree Index		53% Reliability
Type Merit	+0.69	Excellent
Mammary	+0.73	Excellent
Legs & Feet	+0.40	Excellent
Stature	+0.58	160 cm
Chest Width	+0.45	Wide
Body Depth	-0.81	Deep
Angularity	+0.89	Open Rib
Rump Angle	+0.52	Low Pins
Rump Width	+0.85	Wide
Rear Leg Side	+0.45	Sickled
Foot Angle	-0.29	Steep
Fore Udder Att	+0.59	Tight
Rear Udder Ht	+0.33	Very High
Udder Support	-0.05	Strong
Udder Depth	+0.55	20cm Above
Front Teat Pl.	-0.76	Close
Teat Length	+0.29	Long
Rear Teat Pl.	-0.61	Close
Teat Pos. Side	+0.32	Apart
Locomotion	+0.54	Excellent
Condition Score	-0.32	High

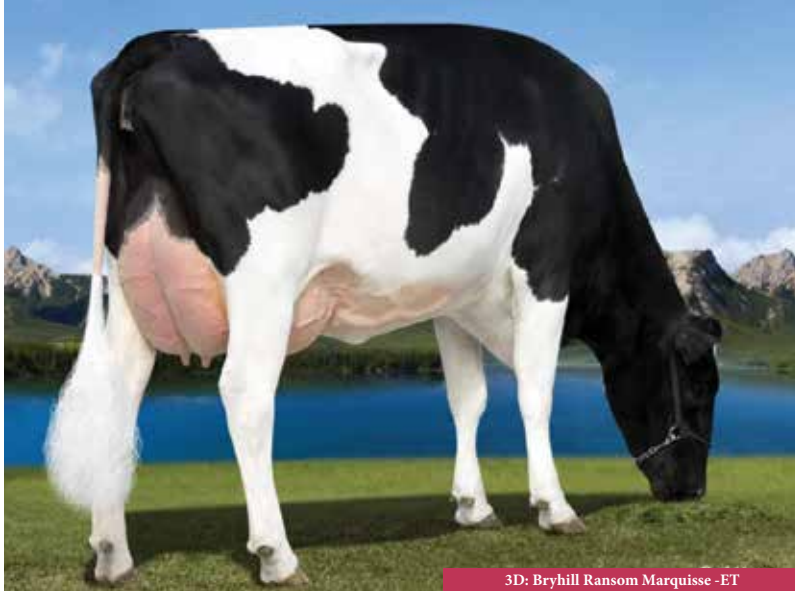
-2 +2

WHEELHOUSE

Peak Wheelhouse ET BLF BYF CVF RDF CDF

Daughter Proven

HB No: 65003209641362 AI Code: HO6603
 Beta Casein A2A2 Source: USA
 Kappa Casein AB DOB: 09.02.19



3D: Bryhill Ransom Marquise -ET

HOLSTEIN PRODUCTION

AHDB Dairy PTA December 2023
 Production Reliability 79% PLI Reliability 70%

PLI	£623
Milk Kg	+618
Fat Kg	+38.1
Fat %	+0.15
Protein Kg	+24.2
Protein %	+0.04
SCI £371	ACI £509 Rel. 70%
Daughter Proven - 38 Daughters in 11 Herds	

✓ Power and Strength

✓ Daughter Fertility

✓ Production

✓ Wide Rumps

✓ Sire of Sons

✓ Improves all Management Traits



Pursuit X Duke X Rubicon

MANAGEMENT TRAITS		12/23
Healthy Cow Index	£187	Improver
Enviro Cow Index	+2.9	Improver
Fertility Index	+6.0	Improver
Lifespan	+137	Improver
Somatic Cell Count	-13	Improver
Mastitis	-1	Improver
TB Advantage	+3.4	Desirable
Lameness Index	+2.3	Improver
Maintenance	+14	Desirable
Calf Survival	+0.0	Improver
Direct Calving Ease	+0.1	Easy
Mat. Calving Ease	+1.6	Easy
Gestation Length	-1	Shorter
Digital Dermatitis	+0.1	Improver
Dairy Carcase	+1.0	Improver
Feed Advantage	+8	Improver
Temperament	+0.23	Good
Ease of Milk	+0.53	Fast

Below Average Average Above Average

HOLSTEIN CONFORMATION

Young Genomic Pedigree Index HUKI 12/23 58% Reliability

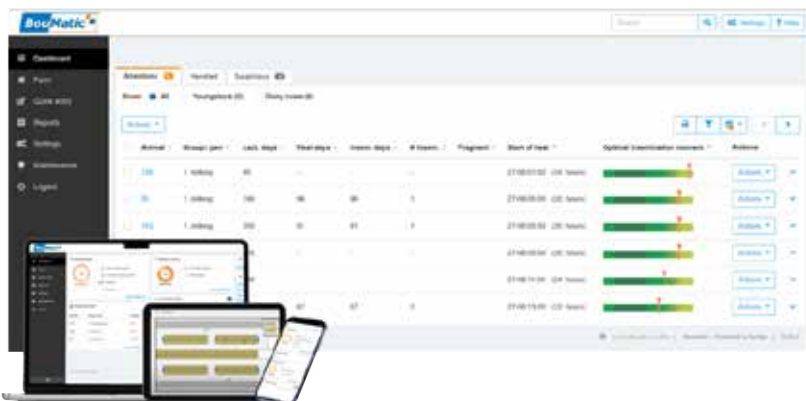
Type Merit	+1.40	Excellent
Mammary	+1.34	Excellent
Legs & Feet	+0.57	Excellent
Stature	+0.41	160 cm
Chest Width	+1.86	Wide
Body Depth	+0.57	Deep
Angularity	+0.86	Open Rib
Rump Angle	+1.71	Low Pins
Rump Width	+2.13	Wide
Rear Leg Side	+0.50	Sickled
Foot Angle	-0.42	Steep
Fore Udder Att	+0.45	Tight
Rear Udder Ht	+1.12	Very High
Udder Support	+0.68	Strong
Udder Depth	+0.21	20cm Above
Front Teat Pl.	+1.56	Close
Teat Length	-1.34	Long
Rear Teat Pl.	+1.51	Close
Teat Pos. Side	+1.16	Apart
Locomotion	+0.81	Excellent
Condition Score	+0.69	High

-2 +2

KNOW YOUR COW

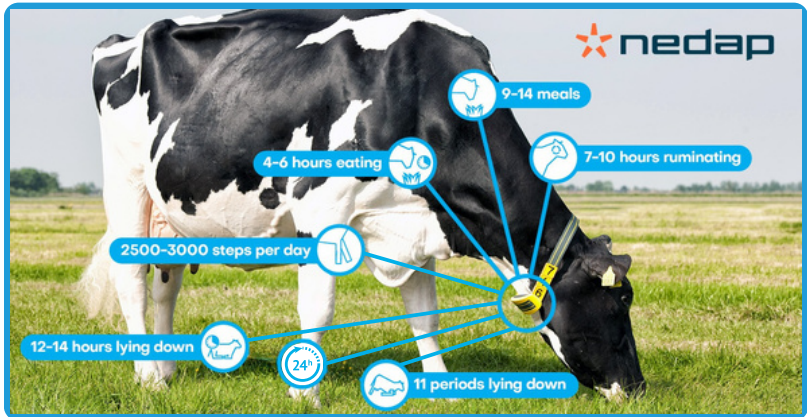


AI SERVICES
- NORTHERN IRELAND -



BouMatic's RealTime powered by Nedap provides accurate heat detection with health monitoring directly to you.

"The *RealTime* system is like having an extra pair of eyes on the farm because the cows are being monitored 24/7"



To find out more about Boumatic Real Time collars contact your AI Services breeding specialist to find out more.



Powered by  nedap



SCAN TO FIND OUT MORE

Fertility Boost

AI Services offers a selection of mixed beef semen. Mixed semen of this nature has been shown to significantly improve conception rates.

Available Fertility Boost Mixtures

	Sire 1	Sire 2	Sire 3
Triple Mix British Blue	Knockagh Jubilant	Boroside Luxury	Chatham Olaf
Triple Mix British Blue	Boroside Incredible	Boroside Luxury	Chatham Olaf
Triple Mix Aberdeen Angus	Drumhill Lord Highway	Drumhill Explorer	HW Grenade
AA x AA x HER	HW Grenade	Drumhill Lord Highway	Normanton 1 Willy Wonka
AA x BB x HER	Drumhill Explorer	Chatham Ned	Normanton 1 Willy Wonka
AA x BB x HER	HW Grenade	Chatham Olaf	Graceland 1 Silas
AA x HER x LIM	HW Grenade	Graceland 1 Silas	Ampertaine Ifor
BS x BG x HER	Craigfaddock Parnassus	Ballylough High Hope	Graceland 1 Silas



HW Grenade



Boroside Luxury



Normanton 1 Willy Wonka



Drumhill Explorer



Chatham Olaf



Ampertaine Ifor

Additional Mixes are available by request. Individual sires may change in the mixture from time to time.

Beef Sires for the Dairy Herd

GRENADE

ABERDEEN ANGUS
HW Grenade
HB No: UK546977102535
DOB: 01.03.19

Exceptional Growth Rates

EBVs suggest improvement in Muscle Development

Use on cows until detailed calving survey completed



Calving Survey Information

No. Surveys 80 Cows and 10 Heifers	90
Surgical Vet Assistance	2.2%
Non-Surgical Vet Asst	1.1%
Gestation Length	286 Days

MR KAYO

ABERDEEN ANGUS
Glenbrae Red Mr Kayo W825
HB No: UK939290404825
DOB: 15.04.2020

Kayo is a Red Angus with above average Growth and Muscling

Smooth fleshing sire suitable for crossing

Early calving information suggests Calving Ease



Calving Survey Information

No. Surveys 20 Cows and 11 Heifers	31
Surgical Vet Assistance	0.0%
Non-Surgical Vet Asst	0.0%
Gestation Length	284 Days

ROCKET

ABERDEEN ANGUS
Thrunton Rocket L282
HB No: UK106935301282
DOB: 04.06.11

Excellent Progeny Suitable for Dairy Cows

Short Gestation



Calving Survey Information

No. Surveys 138 Cows and 76 Heifers	214
Surgical Vet Assistance	1.0%
Non-Surgical Vet Asst	2.4%
Gestation Length	284 Days

IFOR

LIMOUSIN
Ampertaine Ifor
HB No: MGD13-8897
DOB: 26.09.13

Exceptional Growth Reliability

Use on mature cows only



Calving Survey Information

No. Surveys 162 Cows and 45 Heifers	207
Surgical Vet Assistance	3.9%
Non-Surgical Vet Asst	3.9%
Gestation Length	292 Days

HIGHWAY

ABERDEEN ANGUS
Drumhill Lord Highway V271
HB No: UK959342703271
DOB: 24.04.19

Highway is bred from a successful and proven cow family

Tremendous indexes for both Terminal and Maternal

Use only on cows until a detailed calving survey is completed



Calving Survey Information

No. Surveys 24 Cows and 5 Heifers	29
Surgical Vet Assistance	0.0%
Non-Surgical Vet Asst	0.0%
Gestation Length	286 Days

FRANKY

INRA-95
Franky
HB No: FR8128401071
DOB: 11.11.10

INRA-95 is a composite breed specially for use on Dairy Cows for:

Good Early Growth

Extra Muscularity in Hindquarter

Smaller Calves to promote Calving Ease



FRENCH PERFORMANCE DATA

Calving Ease	Total Merit for Beef Abilities	Muscular Development
100	130	145

AI Services is committed to supplying the very best Beef Sires for use on dairy cows. Almost all of the sires selected have had detailed calving surveys carried out and have had progeny inspected for suitability.

OLAF

BRITISH BLUE

Chatham Olaf
HB No: B-20190926
DOB: 25.09.19



Top Performance Sire

Low Birth Rate

Exceptional Muscle Development

01/24 British Blue Breedplan EBVs				
	Calv Ease Direct %	Birth Wt Kg	BBB Carcase Profitability GBP	BBB Pedigree Breeding GBP
EBV	+0.3	+2.6	+27	+20
Breed Average EBVs for 2022 Born Calves				
EBV	-0.4	+2.4	+12	+5

SILAS

HEREFORD

Graceland 1 Silas
HB No: UK924024809644
DOB: 15.06.19



Top Performance Sire

Style and Quality

High Growth Rates

Calving Survey Information	
No. Surveys 22 Cows and 3 Heifers	25
Surgical Vet Assistance	0.0%
Non-Surgical Vet Asst	4.0%
Gestation Length	285 Days

NED

BRITISH BLUE

Chatham Ned
HB No: B-20180498
DOB: 15.05.18



Exceptional Length and Muscling

Excellent EBVs for Growth and Overall Index

Top 5% of the breed for Carcase Profitability

Use on cows only until a detailed calving survey is completed

01/24 British Blue Breedplan EBVs				
	Calv Ease Direct %	Birth Wt Kg	BBB Carcase Profitability GBP	BBB Pedigree Breeding GBP
EBV	+0.4	+2.4	+23	+15
Breed Average EBVs for 2022 Born Calves				
EBV	-0.4	+2.4	+12	+5

ULSTERMAN

HEREFORD

Barnburn 1 Ulsterman (P)
HB No: UK937266703097
DOB: 03.09.20



Ulsterman combines style and quality with performance

EBVs suggest low Birth Weight

Suitable for breeding suckler replacements

01/24 Hereford Breedplan EBVs				
	Calv Ease Direct %	Birth Wt Kg	BBB Carcase Profitability GBP	BBB Pedigree Breeding GBP
EBV	+1.0	+2.2	+31	+39
Breed Average EBVs for 2022 Born Calves				
EBV	-0.1	+2.4	+27	+33

JUBILANT

BRITISH BLUE

Knockagh Jubilant
HB No: B-20141285
DOB: 04.12.14



Calving Ease sire

Excellent colour marking

Recommended on Holstein cows

Calving Survey Information	
No. Surveys 83 Cows and 4 Heifers	87
Surgical Vet Assistance	0.0%
Non-Surgical Vet Asst	0.0%
Gestation Length	284 Days

GRISY

CHAROLAIS CULARD

Grisy
HB No: FR6950643724
DOB: 30.07.11



Tremendous Muscling Ability

Above Average Growth

High Carcass Value

Average Calving Ease

Excellent Conformation

FRENCH PERFORMANCE DATA		
Calving Ease	Total Merit for Beef Abilities	Economic Proof for Beef Abilities
104	111	€55

Key Elements of Dairy Evaluations

High-quality cows with good genetics are at the heart of profitable dairy farming. Without this, there's a limit to your herd's performance, no matter how good your management is. Breeding indexes and traits can help you make the right breeding decisions.

This isn't just about genetics for milk production. It's also about health, welfare, management and type traits, which all contribute to your profitability. All of these can be improved through breeding.

Poor breeding decisions can mean the difference between profit and loss, and even between the survival and failure of your business.

Breeding decisions are cumulative – the effects build up over generations, meaning that improvements can be introduced over just a few years through the breeding choices you make.

PLI, SCI and ACI

Profitable Lifetime Index (€PLI) is expressed as a financial value and indicates the additional profit that a daughter of a high €PLI bull is expected to earn over her lifetime. It is designed for all-year-long calving herds.

Spring Calving Index (€SCI) is suitable for spring block-calving herds and was developed to breed cows that produce lower volumes of milk of a higher quality.

Autumn Calving Index (€ACI) is suitable for autumn block-calving herds and reflects the costs of feeding for winter milk production and the higher milk price per litre received at that time of year.

Production PTAs

You can use production PTAs to allow selection to produce cows that best suit the available milking contract.

Genetic indexes for production were the first to be introduced and have played an essential part in the increases in milk production that farmers have achieved in recent decades.

The production traits for which all male and female dairy cattle are assigned a genetic index are **Milk (kg)**, **Fat (kg)**, **Fat (%)**, **Protein (kg)** and **Protein (%)**.

The range of values for a PTA will vary from trait to trait. For example, a milk (kg) PTA may exceed 1,000 kg, whereas a fat (kg) PTA is unlikely to be more than 50 kg.

Persistency PTAs give you an indication of a bull's daughters' ability to maintain production throughout lactation. A higher persistency PTA generally reflects a flatter lactation curve.

Conformation PTAs

Type traits play an important role in determining a cow's suitability for sustained milk production.

Linear type traits describe the physical attributes that make up how a cow looks, and are measured on a linear scale.

Feet and Legs and **Udder Composites** are described in terms of desirability. Higher scores indicate the best overall quality.

Type Merit predicts a bull's ability to transmit overall type. It's based on a combination of his daughters' scores for Feet and Legs, Udder and body conformation, in order of importance.

Health, welfare and fitness traits

Breeding for these traits makes it possible to produce cows with a higher chance of experiencing better health and welfare or that can better fight off infection. Including health traits in your breeding decisions will have a positive cumulative effect on your herd.

HealthyCow enables farmers to select bulls that will breed even more fertile, healthier cows that stay in the herd for longer. Progeny from the top-ranking HealthyCow index show a higher health status throughout their longer lifetime.

EnviroCow identifies bulls which transmit the best environmental credentials to their daughters. These will be cows which are predicted to create the least GHG emissions in their lifetimes for each kilogram of solids-corrected milk they produce.

Fertility Index predicts female fertility. A bull with an above-average FI will breed cows with improved calving intervals and better non-return rates. Using bulls with the best FI can reduce calving interval by around seven days in one generation.

Lifespan PTAs predict reduced or increased daughter survival and are expressed as extra days of life, with positive indexes being desirable.

Somatic Cell Count (SCC) PTAs predict changes in a daughter's somatic cell count, with negative figures desirable.

Mastitis PTAs indicate a bull's ability to transmit mastitis resistance to his daughters. Negative figures are also desirable.

TB Advantage helps dairy farmers breed cattle with improved resistance to bovine tuberculosis. Positive scores are desirable.

Lameness Advantage PTAs can be used to reduce cases of lameness in the herd, with positive indexes desirable.

Calf Survival PTAs indicate sires with increased calf survival rates between tagging and 10 months of age.

Digital Dermatitis Index indicates resistance to digital dermatitis, with positive figures being desirable.

Calving PTAs

Positive Calving Ease indexes figures predict easier-than-average calvings and negative figures predict more difficult calvings.

Direct Calving Ease predicts the ease with which a calf by that sire will be born. You should avoid negative dCE% when breeding maiden heifers, as these are predicted to give a higher proportion of difficult calvings.

Maternal Calving Ease predicts the ease with which a daughter of that sire will give birth.

Gestation Length is expressed in days and ranges from +7 days (longer) to -7 days (shorter). The heritability of gestation length is 43%, indicating that genetics plays a large role in reducing gestation length.

Management PTAs

Temperament, ease of milking, calving ease and maintenance traits can make a difference to the smooth running and management of your farm.

Maintenance PTAs estimate the feed efficiency differences of animals. Negative figures are desirable, as progeny will have lower feed costs.

Dairy Carcase Index predicts carcase conformation and average daily carcase gain in a bull's progeny, with positive figures desirable.

Feed Advantage identifies bulls that transmit good feed conversion on to their daughters. It is expressed in kilograms of dry matter intake (DMI) saved during each lactation.

Temperament is expressed on a standardised scale of -3 to +3, with the highest indexes indicating the predicted transmission of a placid temperament.

Ease of milking is also expressed on a -3 to +3 scale. Negative figures represent hard-milking cows, while positive figures predict fast milking cows.

For further information, visit the AHDB website at www.ahdb.org.uk

At Your Service...

Pregnancy Scanning

Regular pregnancy scanning is essential for keeping on top of fertility on any farm. Pre-breeding and pregnancy scanning services are available through AI Services.

DIY Training courses

Interested in AI? AI Services offers an extensive DIY training course with both veterinary and practical instruction.

Liquid Nitrogen

AI Services offer a reliable and trusted Liquid Nitrogen Delivery Service, keeping your DIY flask topped up every 3 months.

Embryo Transfer

At AI Services we have been providing successful Embryo Transfer Services to NI farms for over 20 years. Used by a range of commercial and pedigree beef and dairy herd owners, embryo transfer can fast-track genetic gain by producing up to 20 progeny each year from your best livestock and maximises on breeding by ensuring the continuity of the best bloodlines in the herd.

DIY Supplies

A selection of AI supplies are available for delivery.

For more information phone Ballycraigy on (028) 9083 3123.



AI SERVICES
- NORTHERN IRELAND -



AI SERVICES

- NORTHERN IRELAND -

Ballycraigy 671 Antrim Road
Newtownabbey Co Antrim
BT36 4RL
Tel: 028 9083 3123
Web: www.ai-services.co.uk
Email: info@ai-services.co.uk

To Book a Service
Call or Pregnancy
Scan,
Telephone:

028 9083 3123

At Your Service . . .

Headquarters and Stud Facility	Ballycraigy	028 9083 3123
Breeding Information	Ivan Minford	078 3118 9852 028 9083 3123 iminford@ai-services.co.uk
	Michelle Hill	028 9083 3123 mhill@ai-services.co.uk

BREEDING SPECIALISTS

ANTRIM / LONDONDERRY

Ben Mallon	078 8444 3899
Ivan Minford	078 3118 9852
Gary Henderson	079 8934 6226

DOWN

James Compston	079 7660 5701
----------------	---------------

FERMANAGH / TYRONE

John Sproule	077 7816 9263
--------------	---------------

ARMAGH / TYRONE

Nigel Spence	078 0927 4141
--------------	---------------

EMBRYO TRANSFER

David McCall	077 7880 5357
--------------	---------------

STUD MANAGER

Robin Boyd	077 9934 6784
------------	---------------

DIY TRAINING

Ballycraigy	028 9083 3123
-------------	---------------



Our Breeding Partners

