

# *Dairy Breeds Catalogue 2024*



Alex Arki

*The Building  
Blocks to  
Long Term  
Profitability*



**Ai SERVICES**  
- NORTHERN IRELAND -



# AI SERVICES

- NORTHERN IRELAND -

*Making genetics deliver for you*



AI Services (NI) is a trusted farmer-owned company with approximately 2,500 farmer shareholders.

At AI Services our mission is to help NI farmers profit through high quality livestock genetics and to supply an efficient and effective A.I. service to livestock producers throughout Northern Ireland.

Combining our market-leading genetics with informed breeding decisions can help build future farm profitability.

Our team of specialist breeding advisors are on hand to assess your herd's current genetic performance, review its specific strengths and weaknesses, and create a bespoke genetic plan for your herd.

## AI Technician Network

Our dedicated team of AI technicians are on hand to provide an effective and efficient insemination service to all our customers throughout Northern Ireland. All calls logged before 10.30am are guaranteed a same day service.

## AI Services Stud Facilities

Our Ballycraigy Stud is an EU Approved Semen Collection Centre for cattle and home to dedicated facilities for semen analysis and storage. Semen collected at the stud is eligible for export to EU member states and a range of countries across the globe. Our specialist team at the stud are also available to conduct bull fertility assessments on commercial farms.

***For more information phone Ballycraigy on (028) 9083 3123.***



Welcome to our new Dairy Breeds Directory for 2024.

AI Services has scoured the marketplace to source sires of the highest calibre to complement Northern Irish herds, using health, longevity and components as top priorities for bull selection. Pedigree and crossbreeders will find a wide selection of sires to suit your breeding requirements.

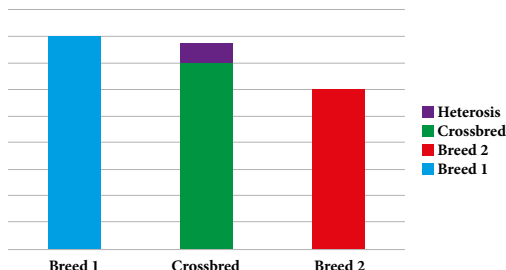
As the demand for crossbreeding grows, below please find some guidance notes from the Agriculture and Horticulture Development Board (AHDB).

## Dairy Genetic Crossbreeding

Crossbreeding is the deliberate mating of animals from different breeds or strains designed to take advantage of Heterosis (Hybrid Vigour) for characteristics like production, fertility and longevity.

Heterosis/Hybrid Vigour is the tendency of a crossbred animal to have qualities superior to that of either parent but not more than the dominant breed.

The graph shows how heterosis can be applied to all health or production traits if there is sufficient genetic difference between the two chosen breeds.



If Breed 1 was crossed with Breed 2 the green area of the crossbred would be the logical average animal produced by the two breeds. The purple area on top of this is the added benefit or heterosis effect. The heterosis effect is variable between breeds and also the traits affected.

Trial work has shown the main benefit of heterosis is seen in fitness and health traits. 10% to 18% heterosis has been recorded in trials carried out in California and New Zealand in a wide variety of crossbred cows including Swedish/Norwegian Reds (SRB), Brown Swiss, Jerseys, and Montbelliarde. Milk production has been recorded as improving up to 6% but it is important to remember this is not the only measure of profitability.

To gain and maintain the effects of heterosis, breed and bull selection is paramount. To maximise the benefits farmers need to plan the direction they want their business to take in the long term to ensure cross breeding is the right path for them.

Although working a four way cross system provides maximum gain from heterosis, it is widely recommended a three way cross is more sustainable.

Using a four way cross is:

- Difficult to implement
- Choosing four suitable breeds can be a problem
- Breed qualities are watered down with each cross

Heterosis should not be used as the main reason to crossbreed but as an added bonus. It is important to remember that crossbreeding is about herd improvement not breed improvement.

Whilst every effort has been made to ensure the accuracy of all information contained in this catalogue, AI Services (NI) Ltd. accepts no responsibility whatsoever for any error, and without prejudice do not accept any liability for loss which may result from any error.

AI Services is the supplier / seller of semen and does not carry any responsibility or liability to the buyer in respect of loss arising from performance or fertility issues, or any other matters which are outside of the direct control of AI Services. The purchase of semen does not guarantee fertility or conception.

AI Services abides by the AHDB Dairy and Holstein UK established Code of Advertising.

DANISH RED	
Havcar	4
Triad	5
Ulvær	6
Uppura	7
Vimo	8
Virkild	9
HOLSTEIN	
Ascari	11
Gipsy	12
Starwar	13
MONTBELLARDE	
Ilanne	14
Pactole	15
Royco	16
Syrocco	17
Omalet	18
Neutrino	18
FRIESIAN	
Firoda Bill 3	20
Google 3	21
HOLSTEIN FRIESIAN	
Magnifico	22
Mascot	23
Mystic	24
Phoenix	25
FLECKVIEH	
Hokuspokus	27
Sunstar	28
Zaschka	29
JERSEY	
Danka	30
Kjolby	31
NORMANDE	
Razzia	32
Tattoo	32
BROWN SWISS	
O'Malley	33
Rully	33
DAIRY SHORTHORN	
Magnum	34





VR Triad



*Suitable for Spring Calving Herds*

*Reduces Stature and Frame*

*Excellent Legs and Feet*

*Improves Hoof Health*

### DANISH PRODUCTION

Denmark, Rel. 80%

August 2023

<b>Milk Kg</b>	<b>96</b>
<b>Fat Kg</b>	<b>104</b>
<b>Fat %</b>	<b>111</b>
<b>Protein Kg</b>	<b>104</b>
<b>Protein %</b>	<b>116</b>
<b>Production</b>	<b>106</b>
<b>NTM</b>	<b>22</b>

Genomic Young Sire

### AYRSHIRE PRODUCTION

AHDB Dairy

PTA August 2023

Production Rel. 43%

PLI Rel. 43%

<b>PLI</b>	<b>£513</b>
<b>Milk Kg</b>	<b>+505</b>
<b>Fat Kg</b>	<b>+21.0</b>
<b>Fat %</b>	<b>+0.00</b>
<b>Protein Kg</b>	<b>+22.7</b>
<b>Protein %</b>	<b>+0.09</b>

SCI £313 ACI £332 Rel. 43%

Genomic Young Sire Pedigree Index

## VR Ture X VR Futari

### MANAGEMENT TRAITS

08/23

HealthyCow Index	£159		Improver
Enviro Cow Index	+2.8		Improver
Fertility Index	+11.7		Improver
Lifespan	+79		Improver
Somatic Cell Count	-10		Improver
Maintenance	-7		Desirable

Below Average      Average      Above Average

### DANISH CONFORMATION

Denmark 08/23

Genomic Type Proof

53% Reliability

Frame	80		Excellent
Feet & Legs	119		Excellent
Udder	105		Excellent

80

120





DANISH PRODUCTION	
Denmark, Rel. 77%	August 2023
Milk Kg	113
Fat Kg	120
Fat %	108
Protein Kg	117
Protein %	104
Production	120
NTM	29

Genomic Young Sire



AYRSHIRE PRODUCTION	
AHDB Dairy	PTA August 2023
Production Rel. 40%	PLI Rel. 41%
PLI	£380
Milk Kg	+344
Fat Kg	+21.4
Fat %	+0.11
Protein Kg	+18.5
Protein %	+0.11

SCI £190 ACI £200 Rel. 41%

Genomic Young Sire Pedigree Index

*Top Ranking Sire for Production*

*Suitable for Robotic Milking*

*Excellent Udders*

*Improves Hoof Health*

*VR Uppura X VR Vimo*

MANAGEMENT TRAITS		08/23
HealthyCow Index	£89	Improver
Enviro Cow Index	+1.9	Improver
Fertility Index	+5.5	Improver
Lifespan	+45	Improver
Somatic Cell Count	-7	Improver
Maintenance	+6	Desirable

Below Average      Average      Above Average

DANISH CONFORMATION		Denmark 08/23
Genomic Type Proof		47% Reliability
Frame	105	Excellent
Feet & Legs	110	Excellent
Udder	116	Excellent

80      120

# UPPURA

VR Pudasken Usva Uppura

Danish Red

HB No 73 48444  
Beta Casein A2A2  
Kappa Casein AA

AI Code A8996  
Source Finland  
DOB 06.05.20



VR Uppera



**High Production Sire**

**Suitable for Robotic Milking Schemes**

**Improves Longevity**

**Excellent Udders**

**VR Usva X VR Figarol**

## DANISH PRODUCTION

Denmark, Rel. 81% August 2023

**Milk Kg 105**

**Fat Kg 118**

**Fat % 115**

**Protein Kg 114**

**Protein % 113**

**Production 118**

**NTM 25**

Genomic Young Sire

## AYRSHIRE PRODUCTION

AHDB Dairy PTA August 2023

Production Rel. 43% PLI Rel. 43%

**PLI £525**

**Milk Kg +503**

**Fat Kg +27.2**

**Fat % +0.10**

**Protein Kg +24.6**

**Protein % +0.12**

SCI £312 ACI £323 Rel. 43%

Genomic Young Sire Pedigree Index

## MANAGEMENT TRAITS

08/23

HealthyCow Index	£111		Improver
Enviro Cow Index	+2.9		Improver
Fertility Index	+7.7		Improver
Lifespan	+48		Improver
Somatic Cell Count	-5		Improver
Maintenance	-8		Desirable

Below Average Average Above Average

## DANISH CONFORMATION

Genomic Type Proof

Denmark 08/23  
57% Reliability

Frame	95		Excellent
Feet & Legs	108		Excellent
Udder	108		Excellent

80

120

# VIMO

VR Stakkehave Viljar Vimo

Danish Red

**Sexed and  
Conventional**

HB No 7300000038094 AI Code RD0920  
Beta Casein A2A2 Source Denmark  
Kappa Casein AA DOB 12.12.17



Daughter



**Excellent Health Traits**

**Superb Udders**

**Tremendous Components**

**Daughter Proven**

**VR Vlijar X K Rockstar X  
R Fastrup**

DANISH PRODUCTION	
Denmark, Rel. 99%	August 2023
<b>Milk Kg</b>	<b>98</b>
<b>Fat Kg</b>	<b>116</b>
<b>Fat %</b>	<b>122</b>
<b>Protein Kg</b>	<b>103</b>
<b>Protein %</b>	<b>109</b>
<b>Production</b>	<b>111</b>
<b>NTM</b>	<b>27</b>
<i>Daughter Proven, 3210 Daughters</i>	

AYRSHIRE PRODUCTION	
AHDB Dairy	PTA August 2023
Production Rel. 91%	PLI Rel. 84%
<b>PLI</b>	<b>£501</b>
<b>Milk Kg</b>	<b>+279</b>
<b>Fat Kg</b>	<b>+28.3</b>
<b>Fat %</b>	<b>+0.26</b>
<b>Protein Kg</b>	<b>+20.0</b>
<b>Protein %</b>	<b>+0.17</b>
<i>SCI £258 ACI £296 Rel. 84%</i>	
<i>Daughter Proven, 76 UK Dtrs / 25 UK Hds</i>	

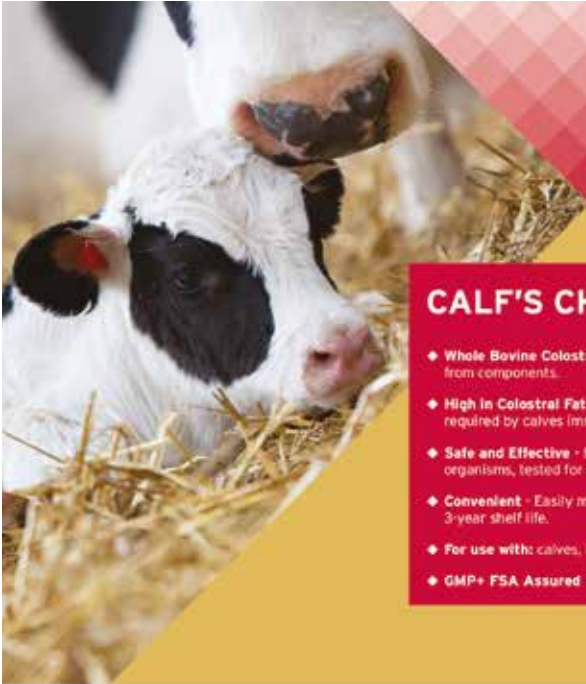
MANAGEMENT TRAITS		08/23
HealthyCow Index	£193	Improver
Enviro Cow Index	+2.1	Improver
Fertility Index	+7.7	Improver
Lifespan	+97	Improver
Somatic Cell Count	-13	Improver
Mastitis	-3	Improver
Maintenance	+25	Desirable
Calf Survival	+1.8	Improver
Gestation Length	+3	Shorter
Dairy Carcase	+1.0	Improver

Below Average      Average      Above Average

DANISH CONFORMATION		Denmark 08/23
Daughter Proven, 1607 Daughters		94% Reliability
Frame	123	Excellent
Feet & Legs	101	Excellent
Udder	121	Excellent
	80	120







### CALF'S CHOICE TOTAL® 100

- ◆ **Whole Bovine Colostrum** - not skimmed or reconstructed from components.
- ◆ **High in Colostral Fat** - important energy source required by calves immediately after birth.
- ◆ **Safe and Effective** - free of disease-causing organisms, tested for safety and efficacy.
- ◆ **Convenient** - Easily mixes in under 15 seconds. 3-year shelf life.
- ◆ **For use with** calves, lambs and goat kids
- ◆ **GMP+ FSA Assured**



Rumilife® CAL24™ Nutritional Supplement

# THREE REASONS TO CHOOSE CAL24

## IT'S SIMPLE.

### SAVE TIME AND LABOR

*give two boluses right after calving*

*No need for a second bolus 12 hours later*



## IT'S UNIQUE.

### TWO FORMS OF READILY AVAILABLE CALCIUM

*plus magnesium & vitamin D*

*allow for optimal calcium absorption*



## IT'S COMPLETE.

### PROVIDES IMMEDIATE AND SUSTAINED RELEASE CALCIUM

**CALCIUM CHLORIDE** aids rapidly for immediate absorption in the rumen

**CALMIN** regulates absorption over time as a combination of highly-absorbable calcium & magnesium

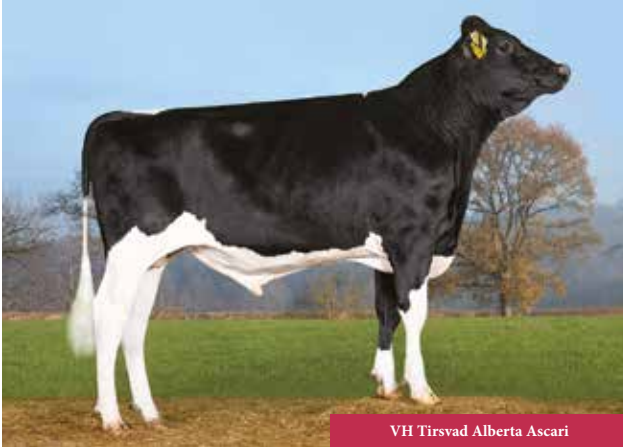
**VITAMIN D** helps facilitate active, sustained calcium transfer beyond the rumen



# Ai SERVICES

- NORTHERN IRELAND -

*For further information, contact your local Breeding Specialist.*



VH Tirsvad Alberta Ascari

**HOLSTEIN PRODUCTION**

AHDB Dairy PTA 08/2023  
Production Rel. 73% PLI Rel. 67%

<b>PLI</b>	<b>£614</b>
<b>Milk Kg</b>	<b>+530</b>
<b>Fat Kg</b>	<b>+23.6</b>
<b>Fat %</b>	<b>+0.03</b>
<b>Protein Kg</b>	<b>+26.1</b>
<b>Protein %</b>	<b>+0.10</b>
SCI £458 ACI £575 Rel. 67%	
Genomic Young Sire Pedigree Index	

✓ **Daughter Fertility +11.3** ✓ **Excellent Udders**

✓ **Impressive Progeny** ✓ **Lowers Angularity**

✓ **Recommended for Procross Programmes** ✓ **Calving Ease**



**Alberta X Pogba X Style**

MANAGEMENT TRAITS		08/23
HealthyCow Index	£215	Improver
Enviro Cow Index	+2.4	Improver
Fertility Index	+11.3	Improver
Lifespan	+98	Improver
Somatic Cell Ct	-8	Improver
Mastitis	-1	Improver
TB Advantage	+1.2	Desirable
Lameness Index	+2.9	Improver
Maintenance	+0	Desirable
Calf Survival	+1.4	Improver
Dir. Calving Ease	+1.2	Easy
M. Calving Ease	+1.2	Easy
Gestation Length	-4	Shorter
Dig. Dermatitis	+0.5	Improver
Dairy Carcase	+1.1	Improver
Feed Advantage	+2	Improver
Temperament	+1.01	Good
Ease of Milk	+0.69	Fast

Below Average Average Above Average

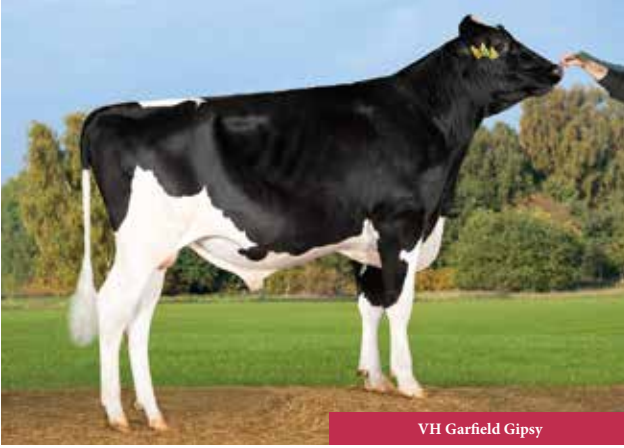
**HOLSTEIN CONFORMATION**

Young Genomic Pedigree Index

HUKI 08/23  
54% Reliability

Type Merit	+0.34	Excellent
Mammary	+1.06	Excellent
Legs & Feet	-0.15	Excellent
Stature	+0.22	160 cm
Chest Width	-0.25	Wide
Body Depth	-1.06	Deep
Angularity	-0.21	Open Rib
Rump Angle	+0.82	Low Pins
Rump Width	+0.52	Wide
Rear Leg Side	+0.64	Sickled
Foot Angle	-0.69	Steep
Fore Udder Att	+1.17	Tight
Rear Udder Ht	+0.52	Very High
Udder Support	+0.71	Strong
Udder Depth	+1.73	20cm Above
Front Teat Pl.	+0.69	Close
Teat Length	-0.37	Long
Rear Teat Pl.	+1.21	Close
Teat Pos. Side	-0.18	Apart
Locomotion	-0.45	Excellent
Condition Score	+0.89	High

-2 +2






VH Garfield Gipsy

**HOLSTEIN PRODUCTION**

AHDB Dairy PTA 08/2023  
Production Rel. 73% PLI Rel. 66%

PLI	<b>£650</b>
Milk Kg	<b>+400</b>
Fat Kg	<b>+34.2</b>
Fat %	<b>+0.21</b>
Protein Kg	<b>+25.3</b>
Protein %	<b>+0.14</b>
SCI £465 ACI £576 Rel. 66%	
Genomic Young Sire Pedigree Index	

-  **High Milk Solids**
-  **Excellent Hoof Health**
-  **Recommended for ProCross Programmes**

-  **Lowers Stature**
-  **Calving Ease Sire**
-  **Locomotion**



**Garfield X Raggat X Brixton**

MANAGEMENT TRAITS		08/23
HealthyCow Index	£174	Improver
Enviro Cow Index	+2.9	Improver
Fertility Index	+3.0	Improver
Lifespan	+85	Improver
Somatic Cell Ct	-24	Improver
Mastitis	-2	Improver
TB Advantage	-1.9	Desirable
Lameness Index	+2.2	Improver
Maintenance	-4	Desirable
Calf Survival	+0.6	Improver
Dir. Calving Ease	+1.3	Easy
M. Calving Ease	+1.2	Easy
Gestation Length	-2	Shorter
Dig. Dermatitis	+0.4	Improver
Dairy Carcase	+0.6	Improver
Feed Advantage	+52	Improver
Temperament	+0.02	Good
Ease of Milk	-1.19	Fast

HOLSTEIN CONFORMATION		HUKI 08/23
Young Genomic Pedigree Index		53% Reliability
Type Merit	+0.64	Excellent
Mammary	+0.58	Excellent
Legs & Feet	+0.77	Excellent
Stature	-0.28	160 cm
Chest Width	-0.14	Wide
Body Depth	-1.16	Deep
Angularity	+0.00	Open Rib
Rump Angle	-0.40	Low Pins
Rump Width	+0.51	Wide
Rear Leg Side	+0.81	Sickled
Foot Angle	-0.60	Steep
Fore Udder Att	+0.49	Tight
Rear Udder Ht	+0.52	Very High
Udder Support	+0.24	Strong
Udder Depth	+0.57	20cm Above
Front Teat Pl.	+1.10	Close
Teat Length	-0.25	Long
Rear Teat Pl.	+0.55	Close
Teat Pos. Side	-0.41	Apart
Locomotion	+0.93	Excellent
Condition Score	-0.13	High

Below Average Average Above Average

-2 +2



VH Starwar

## HOLSTEIN PRODUCTION

AHDB Dairy PTA 08/2023  
 Production Rel. 73% PLI Rel. 66%

<b>PLI</b>	<b>£766</b>
<b>Milk Kg</b>	<b>+911</b>
<b>Fat Kg</b>	<b>+33.3</b>
<b>Fat %</b>	<b>-0.04</b>
<b>Protein Kg</b>	<b>+32.8</b>
<b>Protein %</b>	<b>+0.03</b>
SCI £477 ACI £614 Rel. 66%	
<i>Genomic Young Sire Pedigree Index</i>	

✓ **Production Sire**

✓ **Daughter Fertility**

✓ **Negative Stature**

✓ **Locomotion**

✓ **Ideally suited for Procross Herds**

✓ **Longevity**



## Star X Rio X Surgeon

MANAGEMENT TRAITS			08/23
HealthyCow Index	£211	Improver	
Enviro Cow Index	+3.6	Improver	
Fertility Index	+5.0	Improver	
Lifespan	+125	Improver	
Somatic Cell Ct	-14	Improver	
Mastitis	-1	Improver	
TB Advantage	+1.6	Desirable	
Lameness Index	+3.7	Improver	
Maintenance	-10	Desirable	
Calf Survival	+1.2	Improver	
Dir. Calving Ease	+0.5	Easy	
M. Calving Ease	+0.7	Easy	
Gestation Length	-1	Shorter	
Dig. Dermatitis	+0.9	Improver	
Dairy Carcase	+1.6	Improver	
Feed Advantage	+145	Improver	
Temperament	-1.04	Good	
Ease of Milk	-0.10	Fast	

Below Average Average Above Average

HOLSTEIN CONFORMATION		HUKI 08/23
Young Genomic Pedigree Index		53% Reliability
Type Merit	+1.22	Excellent
Mammary	+0.65	Excellent
Legs & Feet	+2.00	Excellent
Stature	-1.63	160 cm
Chest Width	+0.72	Wide
Body Depth	-0.82	Deep
Angularity	-0.49	Open Rib
Rump Angle	-1.54	Low Pins
Rump Width	+0.24	Wide
Rear Leg Side	-1.33	Sickled
Foot Angle	+0.22	Steep
Fore Udder Att	+0.18	Tight
Rear Udder Ht	+0.83	Very High
Udder Support	+0.40	Strong
Udder Depth	-0.46	20cm Above
Front Teat Pl.	+0.01	Close
Teat Length	+0.26	Long
Rear Teat Pl.	+0.05	Close
Teat Pos. Side	+0.39	Apart
Locomotion	+2.24	Excellent
Condition Score	+1.17	High

-2 +2





Daughter: Majeste

### FRENCH PRODUCTION

France, Rel. 95% August 2023

**Milk Kg +544**

**Fat Kg +31**

**Fat % +0.12**

**Protein Kg +22**

**Protein % +0.06**

**INEL Prod. Index +29**

**ISU Total Merit 143**

Montbelliarde, 472 Daughters in 417 Herds



## Daughter Proven

**Recommended for Cross Breeding**

**Excellent all round Type and Production**

### MONTBELLARDE PRODUCTION

AHDB Dairy PTA August 2023

Production Rel. 98% PLI Rel. 77%

**PLI £246**

**Milk Kg +149**

**Fat Kg +8.1**

**Fat % +0.03**

**Protein Kg +8.1**

**Protein % +0.04**

SCI £196 ACI £256 Rel. 77%

Daughter Proven - 325 UK Dtrs/34 Hds

## Brink X Carter X Pernan

### MANAGEMENT TRAITS

AHDB 08/23

Trait	Value	Comparison
HealthyCow Index	£117	Improver
Enviro Cow Index	+2.8	Improver
Fertility Index	+5.9	Improver
Lifespan	+119	Improver
Somatic Cell Count	+1	Improver
Mastitis	+0	Improver
TB Advantage	+2.8	Improver
Lameness Adv.	+1.7	Improver
Calf Survival	+0.5	Improver
Gestation Length	-2	Shorter
Dig. Dermatitis	+0.5	Improver
Dairy Carcase	+4.1	Improver

Below Average Average Above Average

### MONTBELLARDE CONFORMATION

Daughter Proven, 1511 Dtrs / 960 Herds, Rel. 95% France 08/23

Trait	Value	Comparison
Overall Type	115	Excellent
Body Capacity	104	Good
Feet and Legs	114	Excellent
Udder	114	Excellent
Teats	103	Good
Beef Value	95	Good

88

112



Dam: Noisett



**High Production Sire**

**Lowers Stature**

**Exceptional Legs and Feet**

**Recommended for Improving  
Udders and Teat Length**

### FRENCH PRODUCTION

France, Rel. 76%

August 2023

**Milk Kg +1078**

**Fat Kg +54**

**Fat % +0.18**

**Protein Kg +51**

**Protein % +0.23**

**INEL Prod. Index +64**

**ISU Total Merit 180**

Montbelliarde, Genomic Young Sire

### UK MONTBELLIARDE CONVERTED PRODUCTION PROOF

AHDB Dairy

PTA August 2023

Production Rel. 61%

Genomic

**PLI £258**

**Milk Kg +153**

**Fat Kg +10.6**

**Fat % +0.06**

**Protein Kg +12.0**

**Protein % +0.10**

### Mistik X Jolimome X Hobbit

#### MANAGEMENT TRAITS

France 08/23

Trait	Value	Category
Udder Health	+1.7	Improver
Somatic Cell Score	+1.7	Improver
Clinical Mastitis	+1.4	Improver
Fertility	+1.3	Improver
Cow Fertility	+0.9	Improver
Heifer Fertility	+0.8	Improver
Int. Calv. 1st AI	+0.7	Improver
Productive Life	+1.2	Improver
Ketosis	+0.3	Improver

Below Average    Average    Above Average

#### MONTBELLIARDE CONFORMATION

Genomic Type Proof, Rel. 65%

France 08/23

Trait	Value	Category
Overall Type	127	Excellent
Body Capacity	107	Good
Feet and Legs	126	Excellent
Udder	126	Excellent
Teats	95	Good
Beef Value	93	Good

88

112



Dam: Orangere



## FRENCH PRODUCTION

France, Rel. 76% August 2023

**Milk Kg +1193**

**Fat Kg +88**

**Fat % +0.56**

**Protein Kg +59**

**Protein % +0.26**

**INEL Prod. Index +80**

**ISU Total Merit 180**

Montbelliarde, Genomic Young Sire

## UK MONTBELLARDE CONVERTED PRODUCTION PROOF

AHDB Dairy PTA August 2023  
Production Rel. 61% Genomic

**PLI £292**

**Milk Kg +189**

**Fat Kg +19.8**

**Fat % +0.18**

**Protein Kg +14.5**

**Protein % +0.12**

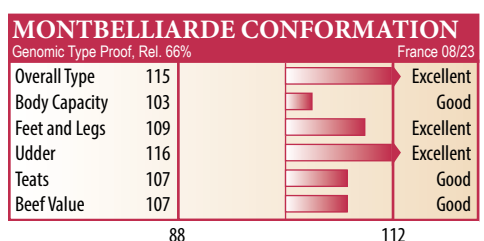
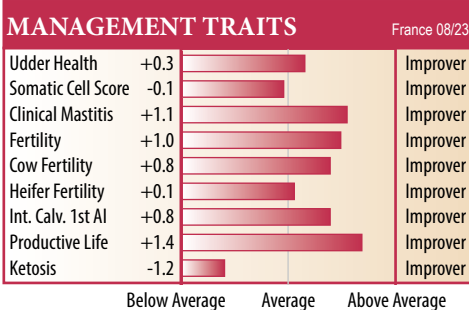
**Exceptional Type**

**Massive Components**

**Excellent Udders**

**Suitable for Robotic Milking**

**Neutrino X Loopi X Hallez**





FRENCH PRODUCTION	
France, Rel. 75%	August 2023
<b>Milk Kg</b>	<b>+1460</b>
<b>Fat Kg</b>	<b>+70</b>
<b>Fat %</b>	<b>+0.19</b>
<b>Protein Kg</b>	<b>+57</b>
<b>Protein %</b>	<b>+0.15</b>
<b>INEL Prod. Index</b>	<b>+72</b>
<b>ISU Total Merit</b>	<b>181</b>
<i>Montbelliarde, Genomic Young Sire</i>	

**NEW**

Dam: 93433a



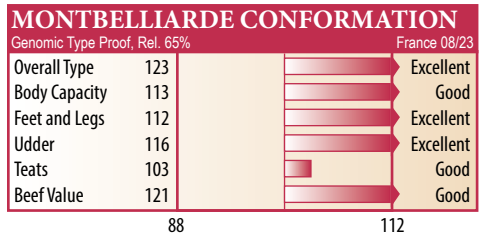
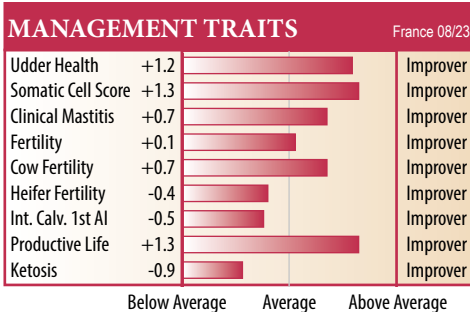
UK MONTBELLIARDE CONVERTED PRODUCTION PROOF	
AHDB Dairy	PTA August 2023
Production Rel. 60%	Genomic
<b>PLI</b>	<b>£262</b>
<b>Milk Kg</b>	<b>+272</b>
<b>Fat Kg</b>	<b>+14.9</b>
<b>Fat %</b>	<b>+0.06</b>
<b>Protein Kg</b>	<b>+13.9</b>
<b>Protein %</b>	<b>+0.06</b>

**Top Milk Sire**

**High Beef Value**

**Super Legs and Feet**

**Ownings X Jacotac X Crasat**





**PITFIELD**

...With the Animal

## THE ELEMENTAL RANGE

Pitfield Elemental is a range of 6 premium quality, broad spectrum trace element and vitamin drenches.

Our drenches are formulated to correct mineral and vitamin imbalances in the animal and aid in:

- ANIMAL HEALTH
- PRODUCTIVITY
- IMMUNITY
- WEIGHT GAIN
- FERTILITY
- YIELD

## GET THE MOST FROM YOUR ANIMALS GENETICS

Contains a full range of trace elements, vitamins, energy & Omega-3

ELEMENTAL CALF

ELEMENTAL CATTLE

ELEMENTAL DAIRY COW

ELEMENTAL LAMB

ELEMENTAL SHEEP

ELEMENTAL SUCKLER COW



## WHEN TO USE?

- PRE BREEDING
- PRE CALVING **OR** LAMBING
- DRYING OFF
- TURN OUT
- HOUSING
- WEANING
- ILLNESS



**KAPPAMAX**  
SELECT CHELATES

Powered by:  
**KAPPAMAX SELECT CHELATES**, formulated with the optimal kappa value & molecular stability for better absorption and protection from lockup.

**OR IN ADVANCE OF ANY STRESS EVENT FOR THE ANIMAL**



*For further information, contact your local Breeding Specialist.*

**Ai SERVICES**  
- NORTHERN IRELAND -



# OMALET

Omalet

Montbelliarde

HB No 28 7033830761

AI Code MB2405

Beta Casein A1A2

Source France

Kappa Casein BB

DOB 31.10.18



Dam: Macarena



## UK MONTBELLARDE CONVERTED PRODUCTION PROOF

AHDB Dairy

PTA August 2023

Production Rel. 60%

Genomic

<b>PLI</b>	<b>£185</b>
<b>Milk Kg</b>	<b>+126</b>
<b>Fat Kg</b>	<b>+9.3</b>
<b>Fat %</b>	<b>+0.06</b>
<b>Protein Kg</b>	<b>+8.5</b>
<b>Protein %</b>	<b>+0.06</b>

FRENCH PRODUCTION France, Rel. 75% August 2023 Genomic Young Sire

Milk Kg	Fat Kg	Fat %	Protein Kg	Protein %	INEL Prod Index	ISU Total Merit
+990	+53	+0.19	+41	+0.13	+53	165

# NEUTRINO

Neutrino

Montbelliarde

HB No 28 3803364134

AI Code MB2346

Beta Casein A2A2

Source France

Kappa Casein BB

DOB 05.02.17



Daughter: Pampa



## MONTBELLARDE PRODUCTION

AHDB Dairy

PTA August 2023

Production Rel. 93%

PLI Rel. 65%

<b>PLI</b>	<b>£296</b>
<b>Milk Kg</b>	<b>+231</b>
<b>Fat Kg</b>	<b>+18.3</b>
<b>Fat %</b>	<b>+0.13</b>
<b>Protein Kg</b>	<b>+20.3</b>
<b>Protein %</b>	<b>+0.18</b>

SCI £222 ACI £261 Rel. 65%

Daughter Proven - 98 UK Dtrs/16 Hds

FRENCH PRODUCTION France, Rel. 75% August 2023 Genomic Young Sire

Milk Kg	Fat Kg	Fat %	Protein Kg	Protein %	INEL Prod Index	ISU Total Merit
+859	+72	+0.51	+65	+0.48	+85	161

# BILL 3

Firoda Bill 3

Sexed and  
Conventional

HB No 46 141518921049 AI Code BF1245  
97% Friesian , 3% Holstein Source Ireland  
DOB 24.02.20



Dam: Firoda PZI Judie VG87

**EURoGENE**  
innovation driving results

**Exceptional Bull from the  
Firoda Judie line**

**Beautiful Strong British  
Friesian Type**

**Exceptional Solids**

## IRISH PRODUCTION

ICBF

August 2023

Production Rel. 78%

<b>EBI</b>	<b>€216</b>
<b>Milk Kg</b>	<b>+32</b>
<b>Fat Kg</b>	<b>+9.0</b>
<b>Fat %</b>	<b>+0.13</b>
<b>Protein Kg</b>	<b>+7.0</b>
<b>Protein %</b>	<b>+0.10</b>
<b>Milk SI</b>	<b>€56</b>
<b>Fertility SI</b>	<b>€127</b>
<b>Calving SI</b>	<b>€23</b>
<b>Beef SI</b>	<b>-€7</b>
<b>Maintenance SI</b>	<b>€7</b>
<b>Management SI</b>	<b>€7</b>
<b>Health SI</b>	<b>-€7</b>

Genomic Young Sire

## UK FRIESIAN PRODUCTION PROOF

AHDB Dairy

PTA August 2023

Production Rel. 67%

PLI Rel. 64%

<b>PLI</b>	<b>£72</b>
<b>Milk Kg</b>	<b>-134</b>
<b>Fat Kg</b>	<b>+9.6</b>
<b>Fat %</b>	<b>+0.19</b>
<b>Protein Kg</b>	<b>+3.3</b>
<b>Protein %</b>	<b>+0.11</b>
<b>Young Genomic Pedigree Index</b>	
<b>SCI</b>	<b>£241</b>
<b>ACI</b>	<b>£204</b>

## Pedigree

<b>Sire</b>	<b>Firoda Jubilaris 11</b>				
<b>Dam</b>	<b>Firoda PZI Judie VG87</b>				
Dam Yields	Milk Kgs	Fat Kgs	Ptn Kgs	Fat%	Ptn %
5 Lact Avg	8004	327	297	4.09	3.70
3rd Lact	8565	349	324	4.08	3.78
<b>MGS</b>	<b>Piet Adema 186</b>				
<b>MGD</b>	<b>Firoda DVT Judie VG88</b>				
4 Lact Avg	719	271	263	3.81	3.68
4th Lact	8151	307	308	3.76	3.78
<b>3rd Dam</b>	<b>Firoda DDY Judie VG89</b>				
8 Lact Avg	7804	280	269	3.58	3.45



Dam: Barrowvale Dheaty 76 GP83

IRISH PRODUCTION	
ICBF	August 2023
Production Rel. 78%	
<b>EBI</b>	<b>€280</b>
<b>Milk Kg</b>	<b>+2</b>
<b>Fat Kg</b>	<b>+8.0</b>
<b>Fat %</b>	<b>+0.14</b>
<b>Protein Kg</b>	<b>+6.0</b>
<b>Protein %</b>	<b>+0.11</b>
<b>Milk SI</b>	<b>€53</b>
<b>Fertility SI</b>	<b>€135</b>
<b>Calving SI</b>	<b>€50</b>
<b>Beef SI</b>	<b>€0</b>
<b>Maintenance SI</b>	<b>€16</b>
<b>Management SI</b>	<b>€0</b>
<b>Health SI</b>	<b>€9</b>
<i>Genomic Young Sire</i>	



**Grand Dam 4th Lactation**  
**5.03% Fat and 3.70% Protein**

**Double Digit Fat and Protein Percentages**

**+1.71 Locomotion**

**Positive for Teat Length**

UK FRIESIAN CONVERTED PRODUCTION PROOF	
AHDB Dairy	PTA August 2023
Production Rel. 62% Genomic	
<b>PLI</b>	<b>£316</b>
<b>Milk Kg</b>	<b>+221</b>
<b>Fat Kg</b>	<b>+19.2</b>
<b>Fat %</b>	<b>+0.12</b>
<b>Protein Kg</b>	<b>+16.4</b>
<b>Protein %</b>	<b>+0.12</b>

Pedigree					
Sire	Manorpark Google				
Dam	Barrowvale Dheaty 76 GP83				
Dam Yields	Milk Kgs	Fat Kgs	Ptn Kgs	Fat%	Ptn %
3 Lact Av	7278	310	268	4.27	3.67
2nd Lact	7828	325	299	4.15	3.67
MGS	Catlane Chad				
MGD	Barrowvale Dheaty 62 EX91 2E x JRB				
5 Lact Avg	7345	357	283	4.93	3.89
4th Lact	8125	408	316	5.03	3.89
3rd Dam	Barrowvale Dheaty 56 VG88 x VML				
2 Lact Avg	6110	264	226	4.32	3.70

# MAGNIFICO

Hanrahan Magnifico

Sexed and  
Conventional

HB No 46 213675211055 AI Code HO6605  
88% Holstein, 12% Friesian Source Ireland  
DOB 07.02.20



VG89 Dam and EX90 Granddam

EUROGENE  
innovation driving results

**Dam EX90 Mammary 4th  
Calver**

**Strong Functional Cows**

**Positive Solids Kgs and  
Percentages**

## IRISH PRODUCTION

ICBF

August 2023

Production Rel. 80%

<b>EBI</b>	<b>€293</b>
<b>Milk Kg</b>	<b>+92</b>
<b>Fat Kg</b>	<b>+23.0</b>
<b>Fat %</b>	<b>+0.33</b>
<b>Protein Kg</b>	<b>+12.0</b>
<b>Protein %</b>	<b>+0.16</b>
<b>Milk SI</b>	<b>€111</b>
<b>Fertility SI</b>	<b>€113</b>
<b>Calving SI</b>	<b>€54</b>
<b>Beef SI</b>	<b>-€11</b>
<b>Maintenance SI</b>	<b>€8</b>
<b>Management SI</b>	<b>€4</b>
<b>Health SI</b>	<b>€14</b>
<b>Genomic Young Sire</b>	

## HOLSTEIN PRODUCTION

AHDB Dairy

PTA August 2023

Production Rel. 73%

SCI/ACI Rel. 67%

<b>SCI</b>	<b>£388</b>
<b>ACI</b>	<b>£405</b>
<b>Milk Kg</b>	<b>-83</b>
<b>Fat Kg</b>	<b>+14.4</b>
<b>Fat %</b>	<b>+0.36</b>
<b>Protein Kg</b>	<b>+9.0</b>
<b>Protein %</b>	<b>+0.24</b>
<b>Young Genomic Pedigree Index</b>	

## Pedigree

<b>Sire</b>	<b>Kifeacle Pivotal</b>				
<b>Dam</b>	<b>Hanrahan S2304 Maureen VG89</b>				
Dam Yields	Milk Kgs	Fat Kgs	Ptn Kgs	Fat%	Ptn %
4 Lact Av	7715	353	286	4.60	3.72
3rd Lact	8926	398	329	4.46	3.69
<b>MGS</b>	<b>Interstice</b>				
<b>MGD</b>	<b>Hanrahan DDG Maureen EX90</b>				
5 Lact Avg	7180	301	245	4.24	3.42
4th Lact	8751	350	299	4.00	3.42
<b>3rd Dam</b>	<b>Hanrahan Uphill Maureen X UPH</b>				
5 Lact Avg	6486	203	240	3.12	3.70



MGD: Cloongore Mandy

**EURGENE**  
innovation driving results

## IRISH PRODUCTION

ICBF

August 2023

Production Rel. 79%

<b>EBI</b>	<b>€310</b>
<b>Milk Kg</b>	<b>+241</b>
<b>Fat Kg</b>	<b>+22.0</b>
<b>Fat %</b>	<b>+0.21</b>
<b>Protein Kg</b>	<b>+20.0</b>
<b>Protein %</b>	<b>+0.20</b>
<b>Milk SI</b>	<b>€141</b>
<b>Fertility SI</b>	<b>€125</b>
<b>Calving SI</b>	<b>€47</b>
<b>Beef SI</b>	<b>-€3</b>
<b>Maintenance SI</b>	<b>€5</b>
<b>Management SI</b>	<b>€2</b>
<b>Health SI</b>	<b>-€2</b>
<i>Genomic Young Sire</i>	

**€141 Milk SI**

**Exceptional Production**

**+42 Kg Solids**

**Ticks all the boxes**

## UK HOLSTEIN CONVERTED PRODUCTION PROOF

AHDB Dairy

PTA August 2023

Production Rel. 63%

<b>SCI</b>	<b>£268</b>
<b>ACI</b>	<b>£276</b>
<b>Milk Kg</b>	<b>+196</b>
<b>Fat Kg</b>	<b>+16.6</b>
<b>Fat %</b>	<b>+0.16</b>
<b>Protein Kg</b>	<b>+16.8</b>
<b>Protein %</b>	<b>+0.19</b>
<i>Young Genomic Pedigree Index</i>	

### Pedigree

<b>Sire</b>	<b>Kilfeacle Pivotal</b>				
<b>Dam</b>	<b>Cloongore Mandy 1525</b>				
Dam Yields	Milk Kgs	Fat Kgs	Ptn Kgs	Fat%	Ptn %
2 Lact Av	7960	314	300	4.01	3.75
1st Lact	6846	309	252	4.52	3.68
<b>MGS</b>	<b>Olcastletown Ronald</b>				
<b>MGD</b>	<b>Cloongore Mandy</b>				
5 Lact Avg	6773	298	260	4.41	3.84
3rd Lact	6902	320	277	4.64	4.01
<b>3rd Dam</b>	<b>IE361470480719</b>				
1st Lact	5737	234	204	4.08	3.56





Dam: Ballydehob Amir Patsy VG86

**EURoGENE**  
innovation driving results

**Dam VG86,  
Grand dam EX92 4E,  
4th Dam EX**

**Dam is half sister to  
Ballydehob Pat 1356**

**+32 Kgs Solids**

**€18 Maintenance**

**IRISH PRODUCTION**

ICBF August 2023  
Production Rel. 77%

<b>EBI</b>	<b>€299</b>
<b>Milk Kg</b>	<b>+154</b>
<b>Fat Kg</b>	<b>+21.0</b>
<b>Fat %</b>	<b>+0.25</b>
<b>Protein Kg</b>	<b>+11.0</b>
<b>Protein %</b>	<b>+0.10</b>
<b>Milk SI</b>	<b>€94</b>
<b>Fertility SI</b>	<b>€141</b>
<b>Calving SI</b>	<b>€47</b>
<b>Beef SI</b>	<b>-€21</b>
<b>Maintenance SI</b>	<b>€18</b>
<b>Management SI</b>	<b>€0</b>
<b>Health SI</b>	<b>€13</b>

Genomic Young Sire

**HOLSTEIN PRODUCTION**

AHDB Dairy PTA August 2023  
Production Rel. 72% SCI/ACI Rel. 65%

<b>SCI</b>	<b>£353</b>
<b>ACI</b>	<b>£349</b>
<b>Milk Kg</b>	<b>+130</b>
<b>Fat Kg</b>	<b>+16.9</b>
<b>Fat %</b>	<b>+0.22</b>
<b>Protein Kg</b>	<b>+7.7</b>
<b>Protein %</b>	<b>+0.06</b>

Young Genomic Pedigree Index

**Pedigree**

<b>Sire</b>	<b>Munta Mystic</b>				
<b>Dam</b>	<b>Ballydehob Amir Patsy VG86</b>				
Dam Yields	Milk Kgs	Fat Kgs	Ptn Kgs	Fat%	Ptn %
2 Lact Av	8720	422	334	4.83	3.82
1st Lact	8230	421	317	5.11	3.85
<b>MGS</b>	<b>Killalough Samir</b>				
<b>MGD</b>	<b>Ballydehob Oman Patsy 2 EX92 4E</b>				
9 Lact Avg	10117	453	353	4.46	3.50
4th Lact	11362	515	403	4.54	3.55
<b>3rd Dam</b>	<b>Ballydehob GMI Patsy EX90</b>				
7 Lact Avg	8843	377	316	4.25	3.61

# PHOENIX

Olcastletown Phoenix 1849

Sexed and  
Conventional

HB No 46 218577531849 AI Code HO6617  
94% Holstein, 6% Friesian Source Ireland  
DOB 26.01.18



Dam: Olcastletown Apple Phoinex VG89

**EURGENE**  
innovation driving results

***Dam and Grand Dam are  
both 4% Protein Cows***

***Longevity***

***Milk + Conformation***

## IRISH PRODUCTION

ICBF

August 2023

Production Rel. 85%

<b>EBI</b>	€271
<b>Milk Kg</b>	+73
<b>Fat Kg</b>	+20.0
<b>Fat %</b>	+0.30
<b>Protein Kg</b>	+12.0
<b>Protein %</b>	+0.16
<b>Milk SI</b>	€104
<b>Fertility SI</b>	€141
<b>Calving SI</b>	€23
<b>Beef SI</b>	€3
<b>Maintenance SI</b>	€7
<b>Management SI</b>	€1
<b>Health SI</b>	-€12
<b>Genomic Young Sire</b>	

## UK HOLSTEIN CONVERTED PRODUCTION PROOF

AHDB Dairy

PTA August 2023

Production Rel. 68%

<b>SCI</b>	£325
<b>ACI</b>	£322
<b>Milk Kg</b>	+17
<b>Fat Kg</b>	+14.9
<b>Fat %</b>	+0.28
<b>Protein Kg</b>	+9.9
<b>Protein %</b>	+0.18
<b>Young Genomic Pedigree Index</b>	

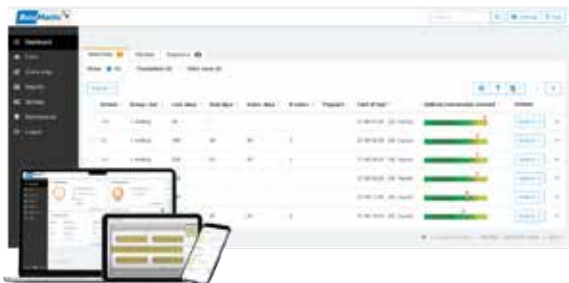
### Pedigree

<b>Sire</b>	Gortreen Sebastain				
<b>Dam</b>	Olcastletown Apple Phoinex VG89				
Dam Yields	Milk Kgs	Fat Kgs	Ptn Kgs	Fat%	Ptn %
6 Lact Av	7370	324	287	4.81	3.89
6th Lact	8079	412	319	5.10	3.95
<b>MGS</b>	Gran-J Oman Mccormick				
<b>MGD</b>	Olcastletown Keet Phoinex VG86				
8 Lact Avg	6450	308	254	4.78	3.95
6th Lact	7557	354	303	4.68	4.01
<b>3rd Dam</b>	Olcastletown RUU Phoinex				
6 Lact Avg	6109	255	218	4.17	3.56

# KNOW YOUR COW



AI SERVICES  
- NORTHERN IRELAND -



*BouMatic's RealTime powered by Nedap* provides accurate heat detection with health monitoring directly to you.

"The *RealTime* system is like having an extra pair of eyes on the farm because the cows are being monitored 24/7"



To find out more about Boumatic Real Time collars contact your AI Services breeding specialist to find out more.



Powered by  nedap



www.nedap.com



Daughter Bambi

## GERMAN PRODUCTION

Germany, Rel. 99% August 2023

**Milk Kg +407**

**Fat Kg +29**

**Fat % +0.14**

**Protein Kg +29**

**Protein % +0.16**

**Milk Index 120**

**Total Merit 134**

Daughter Proven, 628 Daughters



## FLECKVIEH PRODUCTION PROOF

AHDB Dairy PTA August 2023

Production Rel. 76% PLI Rel. 52%

**PLI £272**

**Milk Kg +150**

**Fat Kg +12.7**

**Fat % +0.10**

**Protein Kg +12.9**

**Protein % +0.11**

Daughter Proven - 794 Dtrs / 539 Herds

**High Ranking Daughter Proven Sire**

**Fantastic Udders**

**Excellent Components**

**Suitable for Cross Breeding**

**Hurly X Narr X Zahner**

## FLECKVIEH CONFORMATION

Daughter Proven, 226 Daughters

Germany 08/23

Frame	110	Excellent
Muscling	99	Excellent
Feet and Legs	113	Excellent
Udder	125	Excellent

88

112

## MANAGEMENT TRAITS

08/23

HealthyCow Index	£58	Improver
Enviro Cow Index	+2.3	Improver
Somatic Cell Count	-16	Improver
Mastitis	-3	Improver
Gestation Length	-1	Shorter

Below Average Average Above Average



Sunstar



**Top Milk Production Sire**

**Improves Strength and Frame**

**Excellent Milking Speed**

**Sunrise X Huraxdax X  
Wattmeer**

## GERMAN PRODUCTION

Germany, Rel. 86%

August 2023

**Milk Kg +1582**

**Fat Kg +50**

**Fat % -0.16**

**Protein Kg +47**

**Protein % -0.10**

**Milk Index 134**

**Total Merit 143**

Genomic Young Sire

## UK FLECKVIEH CONVERTED GENOMIC PRODUCTION PROOF

AHDB Dairy

PTA August 2023

Production Rel. 69%

**PLI £264**

**Milk Kg +602**

**Fat Kg +19.0**

**Fat % -0.07**

**Protein Kg +18.4**

**Protein % -0.03**

## MANAGEMENT TRAITS

Germany, Rel. 81%

August 2023

**Fitness 110**

**Longevity 105**

**Udder Health 103**

**Calving Ease Paternal 102**

**Calving Ease Maternal 110**

**Somatic Cell Count 104**

**Fertility Maternal 105**

**Milking Speed 117**

**Temperament 100**

**Vitality 103**

**Ecol. TMI 132**

## FLECKVIEH CONFORMATION

Genomic Type Proof

Germany 08/23



88

112

## MANAGEMENT TRAITS

08/23



Below Average

Average

Above Average





MGD: Naoam

## GERMAN PRODUCTION

Germany, Rel. 86% August 2023

**Milk Kg +1029**

**Fat Kg +40**

**Fat % -0.04**

**Protein Kg +37**

**Protein % +0.00**

**Milk Index 127**

**Total Merit 136**

Daughter Proven, 628 Daughters

*Allround Type Merit*

*Superb Udders*

*Lowers SCC*

*Daughter Proven*

*Zeiger X Dream X Rimmel*



## UK FLECKVIEH CONVERTED GENOMIC PRODUCTION PROOF

AHDB Dairy PTA August 2023

Production Rel. 69%

**PLI £285**

**Milk Kg +400**

**Fat Kg +15.5**

**Fat % -0.01**

**Protein Kg +14.8**

**Protein % +0.02**

## MANAGEMENT TRAITS

Germany, Rel. 81% August 2023

<b>Fitness</b>	<b>116</b>
<b>Longevity</b>	<b>108</b>
<b>Udder Health</b>	<b>121</b>
<b>Calving Ease Paternal</b>	<b>103</b>
<b>Calving Ease Maternal</b>	<b>106</b>
<b>Somatic Cell Count</b>	<b>125</b>
<b>Fertility Maternal</b>	<b>110</b>
<b>Milking Speed</b>	<b>100</b>
<b>Temperament</b>	<b>103</b>
<b>Vitality</b>	<b>100</b>
<b>Ecol. TMI</b>	<b>128</b>

## FLECKVIEH CONFORMATION

Genomic Type Proof

Germany 08/23

Frame	105		Excellent
Muscling	101		Excellent
Feet and Legs	100		Excellent
Udder	112		Excellent

88

112

## MANAGEMENT TRAITS

08/23

Somatic Cell Count	-24		Improver
Mastitis	-3		Improver

Below Average

Average

Above Average





VJ Kjolby



## DANISH PRODUCTION

Denmark, Rel. 80% August 2023

**Milk Kg 109**

**Fat Kg 107**

**Fat % 96**

**Protein Kg 113**

**Protein % 101**

**Production 110**

**NTM 17**

Genomic Young Sire

## JERSEY PRODUCTION

AHDB Dairy PTA August 2023

Production Rel. 59% PLI Rel. 57%

**PLI £328**

**Milk Kg +94**

**Fat Kg +16.5**

**Fat % +0.19**

**Protein Kg +11.7**

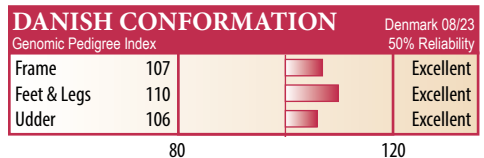
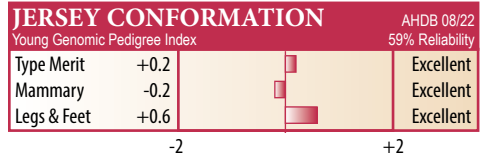
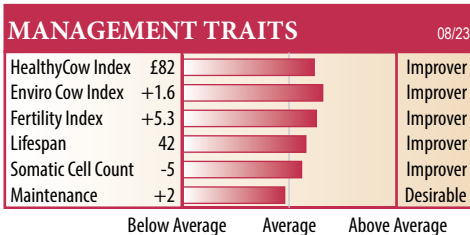
**Protein % +0.14**

SCI £459 ACI £426 Rel. 57%

Genomic Young Sire Pedigree Index

**High Production Sire**  
**Recommended for Robotic**  
**Milking Schemes**  
**Excellent Health Traits**

## VJ Kantona X VJ Pil



**Additional Jersey Bulls are available on request.**

# RAZZIA

Razzia

**SYNETICS**

Normandy  
Only Val X Montfort X Inhappy

HB No 36 5345601749 AI Code N 0827  
Beta Casein A2A2 Source France  
Kappa Casein BB DOB 19.06.20



Dam: Olympe

**Massive Production Sire**  
**Outstanding Legs and Feet**  
**Excellent Udder Health**

## NORMANDY PRODUCTION

France August 2023 Production Rel. 73%

**Milk Kg +870**

**Fat Kg +57**

**Fat % +3.7**

**Protein Kg +48**

**Protein % +3.8**

**INEL 64**

**ISU 174**

Young Genomic Pedigree Index

## NORMANDY CONFORMATION

Young Genomic Pedigree Index 66% Rel.

France 08/23

Total Type Index +1.8

Udder Index +1.2

Legs and Feet +2.4



-2

+2

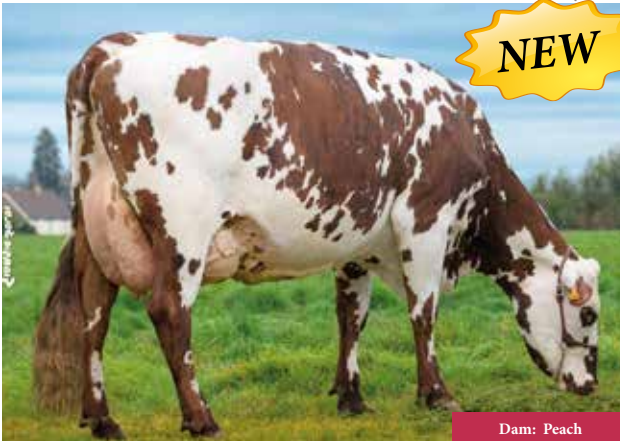
# TATTOO

Tattoo

**SYNETICS**

Normandy  
Pairedas X Manzel X Jylland

HB No 36 7221890798 AI Code N 0814  
Beta Casein A2A2 Source France  
Kappa Casein BB DOB 11.01.22



Dam: Peach

**Top Type Improver**  
**Superb Legs and Feet**  
**Excellent Locomotion**

## NORMANDY PRODUCTION

France August 2023 Production Rel. 67%

**Milk Kg +1063**

**Fat Kg +71**

**Fat % +4.5**

**Protein Kg +47**

**Protein % +2.4**

**INEL 65**

**ISU 186**

Young Genomic Pedigree Index

## NORMANDY CONFORMATION

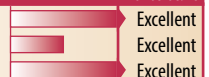
Young Genomic Pedigree Index 60% Rel.

France 08/23

Total Type Index +2.2

Udder Index +1.0

Legs and Feet +2.6



-2

+2

# O'MALLEY

O'Malley

## SYNETICS

Brown Swiss  
Bender X Glarus X Dally

HB No 314427424483 AI Code BR1331  
Beta Casein A2A2 Source France  
Kappa Casein BB DOB 03.12.18



Daughter: Romane

**Massive Improver for Fat and Protein**  
**High Type and Daughter Proven**  
**Good Calving Ease**  
**Recommended for Cross Breeding**

### FRENCH PRODUCTION

France, Rel. 95% August 2023

**Milk Kg +66**

**Fat Kg +28**

**Fat % +3.8**

**Protein Kg +28**

**Protein % +3.1**

**INEL Prod. Index 34**

**ISU Total Merit 146**

Daughter Proven - 211 Dtrs / 115 Herds

### BROWN SWISS PRODUCTION

AHDB Dairy 08/23 Prod. Rel. 82% PLI Rel. 71%

**PLI £125 Milk Kg +33**

**Fat Kg +10.7 Fat % +0.13**

**Protein Kg +11.1 Protein % +0.14**

Daughter Proven - 211 Dtrs / 115 Herds

# RULLY

Rully

## SYNETICS

Brown Swiss  
Alpsee X Loustic X Enzo

HB No 315363609941 AI Code BR1422  
Beta Casein A2A2 Source France  
Kappa Casein AB DOB 16.10.20



Dam: Oklahoma

**NEW**

### FRENCH PRODUCTION

France, Rel. 75% August 2023

**Milk Kg +785**

**Fat Kg +56**

**Fat % +3.6**

**Protein Kg +43**

**Protein % +2.7**

**INEL Prod. Index 58**

**ISU Total Merit 184**

Genomic Young Sire

### UK CONV. BROWN SWISS PROOF

AHDB Dairy 08/23 Prod. Rel. 60%

**PLI £392 Milk Kg +382**

**Fat Kg +22.1 Fat % +0.09**

**Protein Kg +18.2 Protein % +0.07**

Young Genomic Pedigree Index

**High Production Sire**  
**Recommended for Robotic Milking**  
**Improves Milk Solids**





**DAM: Amber Millicent 37  
EX94**

**PRODUCTION VALUES**

AHDB Dairy

PTA August 2023

Production Rel. 68%

<b>PLI</b>	<b>£255</b>
<b>Milk Kg</b>	<b>+108</b>
<b>Fat Kg</b>	<b>+14.8</b>
<b>Fat %</b>	<b>+0.18</b>
<b>Protein Kg</b>	<b>+13.7</b>
<b>Protein %</b>	<b>+0.17</b>

*The Dam and Grandam of Amber Magnum are both still milking in the Amber herd.*

*They are consistent producers and regular breeders and are both scored EX94 points.*

**PEDIGREE**

Sire Cottonhall Jagged Edge  
 PGS Hylite Barbwire-Red  
 Dam Amber Millicent 37 EX94  
 1 305D 6886 KGM 4.36%F 3.47%P  
 2 305D 8387 KGM 4.58%F 3.60%P  
 3 305D 8620 KGM 4.44%F 3.50%P  
 4 305D 9494 KGM 5.21%F 3.59%P  
 MGS Amber Red Kestrel  
 MGD Amber Millicent 34th EX 94  
 8LA 300D 8712 KGM 4.20%F 3.24%P

# At Your Service...

## Pregnancy Scanning

Regular pregnancy scanning is essential for keeping on top of fertility on any farm. Pre-breeding and pregnancy scanning services are available through AI Services.

## DIY Training courses

Interested in AI? AI Services offers an extensive DIY training course with both veterinary and practical instruction.

## Liquid Nitrogen

AI Services offer a reliable and trusted Liquid Nitrogen Delivery Service, keeping your DIY flask topped up every 3 months.

## Embryo Transfer

At AI Services we have been providing successful Embryo Transfer Services to NI farms for over 20 years. Used by a range of commercial and pedigree beef and dairy herd owners, embryo transfer can fast-track genetic gain by producing up to 20 progeny each year from your best livestock and maximises on breeding by ensuring the continuity of the best bloodlines in the herd.

## DIY Supplies

A selection of AI supplies are available for delivery.

*For more information phone  
Ballycraigy on 028 9083 3123.*



**AI SERVICES**  
- NORTHERN IRELAND -



# *At Your Service . . .*

Headquarters and Stud Facility	Ballycraigy	028 9083 3123
Breeding Information	Ivan Minford	078 3118 9852 028 9083 3123 iminford@ai-services.co.uk
	Michelle Hill	028 9083 3123 mhill@ai-services.co.uk

## BREEDING SPECIALISTS

ANTRIM / LONDONDERRY	Ben Mallon	078 8444 3899
	Ivan Minford	078 3118 9852
	Gary Henderson	079 8934 6226
DOWN / ARMAGH	James Compston	079 7660 5701
ARMAGH / TYRONE	Nigel Spence	078 0927 4141
FERMANAGH / TYRONE	John Sproule	077 7816 9263
EMBRYO TRANSFER	David McCall	077 7880 5357
STUD MANAGER	Robin Boyd	077 9934 6784
DIY TRAINING	Ballycraigy	028 9083 3123



**Ai SERVICES**  
- NORTHERN IRELAND -

Ballycraigy 671 Antrim Road Newtownabbey  
Co Antrim BT36 4RL Tel: 028 9083 3123  
Web: [www.ai-services.co.uk](http://www.ai-services.co.uk)  
Email: [info@ai-services.co.uk](mailto:info@ai-services.co.uk)

To Book a Service Call or  
Pregnancy Scan, Telephone:

**028 9083 3123**