

*Breed and succeed with*

**Ai SERVICES**

– NORTHERN IRELAND –



*Wolfhard Schulze*

*The Building Blocks to  
Long Term Profitability*

**HOLSTEIN CATALOGUE 2024**



# AI SERVICES

- NORTHERN IRELAND -



## *Making genetics deliver for you*

AI Services (NI) is a trusted farmer-owned company with approximately 2,500 farmer shareholders.

At AI Services our mission is to help NI farmers profit through high quality livestock genetics and to supply an efficient and effective A.I. service to livestock producers throughout Northern Ireland.

Combining our market-leading genetics with informed breeding decisions can help build future farm profitability.

Our team of specialist breeding advisors are on hand to assess your herd's current genetic performance, review its specific strengths and weaknesses, and create a bespoke genetic plan for your herd.

### **AI Technician Network**

Our dedicated team of AI technicians are on hand to provide an effective and efficient insemination service to all our customers throughout Northern Ireland. All calls logged before 10.30am are guaranteed a same day service.

### **AI Services Stud Facilities**

Our Ballycraigy Stud is an EU Approved Semen Collection Centre for cattle and home to dedicated facilities for semen analysis and storage. Semen collected at the stud is eligible for export to EU member states and a range of countries across the globe. Our specialist team at the stud are also available to conduct bull fertility assessments on commercial farms.

***For more information phone Ballycraigy on (028) 9083 3123.***



*Jane Steel*

# Contents

Page

Page








Holsteins


5

Beef for the Dairy Herd

36

## Holstein Sires PTA August 2023

Bull Name	PLI £	Milk Kg	Fat Kg	Fat %	Protein Kg	Protein %	Combined Fat and Protein Kg	Pedigree	Page
Aeronaut	£651	+672	+27.5	+0.01	+28.3	+0.07	+55.8	Aerosmith X Freemax	5
Francesco 	£774	+415	+32.4	+0.18	+30.7	+0.20	+63.1	Foreman X Simon	6
Futurama	£756	+427	+44.1	+0.31	+27.6	+0.16	+71.7	Zazzle X Cascade	7
Garrix	£838	+894	+54.2	+0.20	+39.6	+0.11	+93.8	Kevlow X Zazzle	8
Gulliver 	£781	+758	+42.4	+0.12	+30.5	+0.05	+72.9	Pursuit X Fabulous	9
Kevlow 	£823	+872	+52.8	+0.20	+38.3	+0.11	+91.1	Plinko X Marius	11
Lienonme	£643	+768	+37.4	+0.07	+32.1	+0.08	+69.5	Tiki X Positive	12
Mask Red	£611	+447	+21.6	+0.04	+24.5	+0.11	+46.1	Stamkose X Wisent	13
Masquerade 	£856	+667	+47.7	+0.23	+31.6	+0.11	+79.3	Kevlow X Pursuit	14
Pellegrino	£682	+840	+61.2	-0.03	+26.7	-0.01	+87.9	Topnotch X Router	15
Powerbuck 	£739	+918	+31.5	-0.06	+28.8	-0.02	+60.3	Tiki X Pursuit	17
Powerhouse	£893	+962	+51.7	+0.14	+42.9	+0.12	+94.6	Wheelhouse X Zazzle	18
Regulus	£732	+384	+47.5	+0.37	+26.5	+0.16	+74.0	Zazzle X Crimson	19
Rutilant Red	£744	+1030	+40.1	-0.01	+33.0	-0.01	+73.1	Sputnik X Altuve	20
Saiko	£729	+780	+36.2	+0.05	+29.9	+0.05	+66.1	Magnifique X Pursuit	21
Skovly P	£664	+481	+32.3	+0.15	+27.3	+0.13	+59.6	Slatt P X Nerd RC	23
Splink	£759	+582	+45.2	+0.25	+29.7	+0.12	+74.9	Plinko X Pursuit	24
Sulien 	£726	+446	+37.8	+0.23	+27.3	+0.15	+65.1	Pursuit X Robson	25
Susic	£757	+620	+45.9	+0.24	+30.3	+0.11	+76.2	Magnifique X Zazzle	26
Try Red	£558	+641	+31.6	+0.07	+30.3	+0.10	+61.9	Tomcruise X Royal	27
Wheelhouse	£693	+660	+41.3	+0.17	+26.3	+0.05	+67.6	Pursuit X Duke	29
Youbetcha	£841	+677	+43.8	+0.19	+31.9	+0.11	+75.7	Wheelhouse X Solution	30
Antonio	£670	+708	+33.9	+0.06	+27.5	+0.05	+61.4	Bandares X Commander	31
Garido 	£609	+815	+42.6	+0.11	+30.3	+0.04	+72.9	Gymnast X Penley	31
Izza	£554	+706	+32.2	+0.04	+32.6	+0.10	+64.8	Hotjob X Jedi	32
Plinko	£721	+889	+43.8	+0.09	+36.7	+0.08	+80.5	Marius X Topshot	32
Spitfire	£564	+781	+30.9	+0.00	+20.2	-0.06	+51.1	Mr Salvatore X Montross	33
Topshot	£624	+727	+33.3	+0.05	+29.5	+0.06	+62.8	Supershot X Embassy	33

 Recommended for Robotic Milking



Cover Photo: Daughter of Casino.

Whilst every effort has been made to ensure the accuracy of all information contained in this catalogue, AI Services (NI) Ltd. accepts no responsibility whatsoever for any error, and without prejudice do not accept any liability for loss which may result from any error.

AI Services is the supplier / seller of semen and does not carry any responsibility or liability to the buyer in respect of loss arising from performance or fertility issues, or any other matters which are outside of the direct control of AI Services. The purchase of semen does not guarantee fertility or conception.

AI Services abides by the AHDB Dairy and Holstein UK established Code of Advertising.

**A** *i Services presents the Top 10 Rankings for the Holstein Sires in this Catalogue. It is recommended you use the sire rankings only as a guide in your selections.*

PLI		
1	Powerhouse	£893
2	Masquerade	£856
3	Youbetcha	£841
4	Garrix	£838
5	Kevlow	£823
6	Gulliver	£781
7	Francesco	£774
8	Splink	£759
9	Susic	£757
10	Futurama	£756

Milk Kgs		
1	Rutilant	+1030
2	Powerhouse	+962
3	Powerbuck	+918
4	Garrix	+894
5	Kevlow	+872
6	Pellegrino	+840
7	Saiko	+780
8	Lienonme	+768
9	Gulliver	+758
10	Youbetcha	+677

Fat + Protein Kgs		
1	Powerhouse	+94.6
2	Garrix	+93.8
3	Kevlow	+91.1
4	Pellegrino	+87.9
5	Masquerade	+79.3
6	Susic	+76.2
7	Youbetcha	+75.7
8	Splink	+74.9
9	Regulus	+74.0
10	Rutilant	+75.5

Fat %		
1	Regulus	+0.37
2	Futurama	+0.31
3	Splink	+0.25
4	Susic	+0.24
5=	Masquerade	+0.23
5=	Sulien	+0.23
7=	Garrix	+0.20
7=	Kevlow	+0.20
9	Youbetcha	+0.19
10	Francesco	+0.18

Protein %		
1	Francesco	+0.20
2=	Futurama	+0.16
2=	Regulus	+0.16
4	Sulien	+0.15
5	Skovly P	+0.13
6=	Powerhouse	+0.12
6=	Splink	+0.12
8=	Masquerade	+0.11
8=	Youbetcha	+0.11
8=	Garrix	+0.11

Type Merit		
1	Aeronaut	+2.18
2	Francesco	+1.94
3=	Powerbuck	+1.54
3=	Sulien	+1.54
5	Gulliver	+1.47
6	Wheelhouse	+1.43
7	Mask Red	+1.39
8	Try Red	+1.32
9	Powerhouse	+1.23
10	Pellegrino	+1.21

Mammary		
1	Aeronaut	+2.85
2	Francesco	+2.10
3	Pellegrino	+2.01
4	Try Red	+1.89
5	Powerbuck	+1.67
6	Futurama	+1.64
7	Lienonme	+1.48
8	Skovly P	+1.37
9	Wheelhouse	+1.32
10	Gulliver	+1.22

Feet & Legs		
1	Aeronaut	+1.81
2	Mask Red	+1.71
3	Rutilant	+1.62
4	Sulien	+1.51
5	Francesco	+1.35
6	Skovly P	+1.10
7	Masquerade	+0.99
8	Gulliver	+0.96
9=	Powerhouse	+0.89
9=	Powerbuck	+0.89

Fertility		
1	Aeronaut	+10.6
2	Powerbuck	+9.6
3	Masquerade	+9.5
4	Pellegrino	+9.4
5	Saiko	+8.0
6	Splink	+7.8
7	Skovly P	+7.6
8	Youbetcha	+7.1
9	Francesco	+6.8
10	Futurama	+6.2

Lifespan		
1	Powerbuck	+189
2=	Gulliver	+156
2=	Pellegrino	+156
4=	Youbetcha	+153
4=	Sulien	+153
6	Wheelhouse	+149
7=	Francesco	+143
7=	Saiko	+143
9=	Masquerade	+137
9=	Aeronaut	+137

Somatic Cell Count		
1	Pellegrino	-26
2	Rutilant	-25
3	Powerbuck	-23
4	Susic	-22
5=	Gulliver	-21
5=	Futurama	-21
7=	Masquerade	-20
7=	Regulus	-20
7=	Mask Red	-20
10	Youbetcha	-19

Direct Calving Ease		
1=	Francesco	+0.5
1=	Mask Red	+0.5
3=	Garrix	+0.4
3=	Kevlow	+0.4
5=	Splink	+0.2
5=	Wheelhouse	+0.2
7	Skovly P	+0.1
8=	Masquerade	+0.0
8=	Youbetcha	+0.0
8=	Susic	+0.0

Robotic Milking		
1	Francesco	
2	Gulliver	
3	Kevlow	
4	Masquerade	
5	Powerbuck	
6	Sulien	
7	Garido	

**Assessing Inbreeding**

A degree of inbreeding always occurs when animals related to one another are mated as a result of a concentration of the same genes. See table to the right for Inbreeding Levels.

**Rule of Thumb**

Commercial producers should avoid matings leading to an inbreeding level of greater than 6.25%.

Mating	Inbreeding %
Sire/Daughter	25%
Full brother/Full sister	25%
Half brother/Half sister	12.5%
Grandsire/Granddaughter	12.5%
Grandson/Granddam	12.5%
Uncle/Niece	6.25%
Son/Granddaughter	6.25%
Daughter/Grandson	6.25%
Full cousins	6.25%
Grandson/Granddaughter	3.13%
Half cousins	3.13%

# AERONAUT

Aeronaut ET BLF BYF CVF CDF

Sexed and Conventional

HB No: 60000364054923 AI Code: HO7727  
 Beta Casein A2A2 Source: Germany  
 Kappa Casein AB DOB: 06.02.22



3rd Dam: SHA Grumeti VG87

HOLSTEIN PRODUCTION	
AHDB Dairy	PTA August 2023
Production Reliability 73%	PLI Reliability 66%
PLI	£651
Milk Kg	+672
Fat Kg	+27.5
Fat %	+0.01
Protein Kg	+28.3
Protein %	+0.07
SCI £356	ACI £512 Rel. 66%
Genomic Young Sire Pedigree Index	

✓ High Type Sire +2.18

✓ Daughter Fertility +10.6

✓ Superb Udders +2.85

✓ Positive Components

✓ Excellent Legs + Feet +1.81

✓ Excellent Cow Family

SYNETICS

## Aerosmith X Freemax X Benz

MANAGEMENT TRAITS		08/23
Healthy Cow Index	£265	Improver
Enviro Cow Index	+2.5	Improver
Fertility Index	+10.6	Improver
Lifespan	+137	Improver
Somatic Cell Count	-10	Improver
Mastitis	-1	Improver
TB Advantage	+1.5	Desirable
Lameness Index	+2.5	Improver
Maintenance	+29	Desirable
Calf Survival	+1.3	Improver
Direct Calving Ease	-0.6	Easy
Mat. Calving Ease	+1.4	Easy
Gestation Length	+0	Shorter
Digital Dermatitis	+0.2	Improver
Dairy Carcase	+1.9	Improver
Feed Advantage	-81	Improver
Temperament	+0.26	Good
Ease of Milk	-0.48	Fast

Below Average Average Above Average

HOLSTEIN CONFORMATION		HUKI 08/23
Young Genomic Pedigree Index		53% Reliability
Type Merit	+2.18	Excellent
Mammary	+2.85	Excellent
Legs & Feet	+1.81	Excellent
Stature	+1.96	160 cm
Chest Width	+1.94	Wide
Body Depth	+1.05	Deep
Angularity	+0.87	Open Rib
Rump Angle	-0.77	Low Pins
Rump Width	+1.86	Wide
Rear Leg Side	+0.16	Sickled
Foot Angle	+1.24	Steep
Fore Udder Att	+3.35	Tight
Rear Udder Ht	+2.08	Very High
Udder Support	+1.06	Strong
Udder Depth	+2.85	20cm Above
Front Teat Pl.	+0.52	Close
Teat Length	-0.57	Long
Rear Teat Pl.	+1.10	Close
Teat Pos. Side	-0.17	Apart
Locomotion	+1.40	Excellent
Condition Score	+0.97	High

-2 +2

# FRANCESCO

Francesco ET BLF BYF CVF CDF

**Sexed and Conventional**

HB No: 60000364300459 AI Code: HO7619  
 Beta Casein A1A2 Source: Germany  
 Kappa Casein AB DOB: 28.01.22



Dam: Mila VG85

HOLSTEIN PRODUCTION	
AHDB Dairy	PTA August 2023
Production Reliability 73%	PLI Reliability 66%
<b>PLI</b>	<b>£774</b>
<b>Milk Kg</b>	<b>+415</b>
<b>Fat Kg</b>	<b>+32.4</b>
<b>Fat %</b>	<b>+0.18</b>
<b>Protein Kg</b>	<b>+30.7</b>
<b>Protein %</b>	<b>+0.20</b>
SCI £529	ACI £657 Rel. 66%
Genomic Young Sire Pedigree Index	

✓ **Robotic Milking**

✓ **Improves Longevity**

✓ **Super Udders +2.10**

✓ **Outcross Pedigree**

✓ **Lowers Stature**

✓ **Improves Locomotion**

**SYNETICS**

## Foreman X Simon X My Dream

MANAGEMENT TRAITS		08/23
Healthy Cow Index	£233	Improver
Enviro Cow Index	+3.5	Improver
Fertility Index	+6.8	Improver
Lifespan	+143	Improver
Somatic Cell Count	-15	Improver
Mastitis	-1	Improver
TB Advantage	+1.8	Desirable
Lameness Index	+2.3	Improver
Maintenance	+7	Desirable
Calf Survival	+1.1	Improver
Direct Calving Ease	+0.5	Easy
Mat. Calving Ease	+1.3	Easy
Gestation Length	-1	Shorter
Digital Dermatitis	+0.5	Improver
Dairy Carcase	+0.9	Improver
Feed Advantage	+41	Improver
Temperament	-0.26	Good
Ease of Milk	+0.17	Fast

Below Average      Average      Above Average

HOLSTEIN CONFORMATION		HUKI 08/23
Young Genomic Pedigree Index		53% Reliability
Type Merit	+1.94	Excellent
Mammary	+2.10	Excellent
Legs & Feet	+1.35	Excellent
Stature	-0.05	160 cm
Chest Width	+1.11	Wide
Body Depth	+0.28	Deep
Angularity	-0.07	Open Rib
Rump Angle	-0.87	Low Pins
Rump Width	+0.59	Wide
Rear Leg Side	-0.45	Sickled
Foot Angle	+0.40	Steep
Fore Udder Att	+1.84	Tight
Rear Udder Ht	+1.47	Very High
Udder Support	+0.11	Strong
Udder Depth	+1.53	20cm Above
Front Teat Pl.	+0.58	Close
Teat Length	+0.62	Long
Rear Teat Pl.	-1.21	Close
Teat Pos. Side	-0.48	Apart
Locomotion	+1.66	Excellent
Condition Score	+1.19	High

-2      +2

# FUTURAMA

Peak AltaFuturama ET BLF BYF CVF DPF CDF

**Sexed and Conventional**

HB No: 65003215425949 AI Code: HO7371  
 Beta Casein A1A2 Source: USA  
 Kappa Casein AB DOB: 08.11.20



HOLSTEIN PRODUCTION	
AHDB Dairy	PTA August 2023
Production Reliability 73%	PLI Reliability 66%
<b>PLI</b>	<b>£756</b>
<b>Milk Kg</b>	<b>+427</b>
<b>Fat Kg</b>	<b>+44.1</b>
<b>Fat %</b>	<b>+0.31</b>
<b>Protein Kg</b>	<b>+27.6</b>
<b>Protein %</b>	<b>+0.16</b>
SCI £489	ACI £620 Rel. 66%
Genomic Young Sire Pedigree Index	

- ✓ **PLI**
- ✓ **Fertility Index**
- ✓ **Component Specialist**
- ✓ **Udders**
- ✓ **Over +71 Kgs Fat + Protein**
- ✓ **All Round Type Improver**



## Zazzle X Cascade X Reason

MANAGEMENT TRAITS		08/23
Healthy Cow Index	£207	Improver
Enviro Cow Index	+3.4	Improver
Fertility Index	+6.2	Improver
Lifespan	+95	Improver
Somatic Cell Count	-21	Improver
Mastitis	-3	Improver
TB Advantage	+1.3	Desirable
Lameness Index	+1.5	Improver
Maintenance	+12	Desirable
Calf Survival	+1.6	Improver
Direct Calving Ease	-0.7	Easy
Mat. Calving Ease	+1.2	Easy
Gestation Length	+0	Shorter
Digital Dermatitis	-0.1	Improver
Dairy Carcase	+0.3	Improver
Feed Advantage	+55	Improver
Temperament	+0.25	Good
Ease of Milk	+0.77	Fast

Below Average      Average      Above Average

HOLSTEIN CONFORMATION		HUKI 08/23
Young Genomic Pedigree Index		54% Reliability
Type Merit	+0.95	Excellent
Mammary	+1.64	Excellent
Legs & Feet	+0.41	Excellent
Stature	+1.23	160 cm
Chest Width	+0.33	Wide
Body Depth	+0.48	Deep
Angularity	+0.96	Open Rib
Rump Angle	-0.19	Low Pins
Rump Width	+1.03	Wide
Rear Leg Side	+0.27	Sickled
Foot Angle	+1.22	Steep
Fore Udder Att	+1.99	Tight
Rear Udder Ht	+1.58	Very High
Udder Support	+0.58	Strong
Udder Depth	+1.16	20cm Above
Front Teat Pl.	+1.50	Close
Teat Length	-0.17	Long
Rear Teat Pl.	+1.24	Close
Teat Pos. Side	+0.05	Apart
Locomotion	-0.07	Excellent
Condition Score	-0.51	High

-2      +2

# GARRIX

Peak AltaGarrix-ET

HB No: 65003247843748

AI Code:

Beta Casein A1A2

Source: USA

Kappa Casein AB

DOB: 07.06.22



HOLSTEIN PRODUCTION	
AHDB Dairy	PTA August 2023
Production Reliability 73%	PLI Reliability 66%
<b>PLI</b>	<b>£838</b>
<b>Milk Kg</b>	<b>+894</b>
<b>Fat Kg</b>	<b>+54.2</b>
<b>Fat %</b>	<b>+0.20</b>
<b>Protein Kg</b>	<b>+39.6</b>
<b>Protein %</b>	<b>+0.11</b>
SCI £529	ACI £659 Rel. 66%
Genomic Young Sire Pedigree Index	

- ✓ **+94 Kg Fat + Protein**
- ✓ **Exceptional Rump Width**
- ✓ **High Milk Production**
- ✓ **Reduces Stature**
- ✓ **Modern Pedigree**
- ✓ **Improves Udders**



## Kevlow X Zazzle X Huey

MANAGEMENT TRAITS		08/23
Healthy Cow Index	£116	Improver
Enviro Cow Index	+4.1	Improver
Fertility Index	+3.1	Improver
Lifespan	+79	Improver
Somatic Cell Count	-8	Improver
Mastitis	-1	Improver
TB Advantage	+1.4	Desirable
Lameness Index	+2.3	Improver
Maintenance	+2	Desirable
Calf Survival	-0.8	Improver
Direct Calving Ease	+0.4	Easy
Mat. Calving Ease	+1.4	Easy
Gestation Length	-2	Shorter
Digital Dermatitis	+0.1	Improver
Dairy Carcase	+1.0	Improver
Feed Advantage	+102	Improver
Temperament	+0.00	Good
Ease of Milk	+0.28	Fast

Below Average      Average      Above Average

HOLSTEIN CONFORMATION		HUKI 08/23
Young Genomic Pedigree Index		53% Reliability
Type Merit	+1.06	Excellent
Mammary	+0.99	Excellent
Legs & Feet	+0.37	Excellent
Stature	-0.05	160 cm
Chest Width	+0.67	Wide
Body Depth	+0.04	Deep
Angularity	+0.76	Open Rib
Rump Angle	+0.25	Low Pins
Rump Width	+1.28	Wide
Rear Leg Side	-0.37	Sickled
Foot Angle	+0.19	Steep
Fore Udder Att	+0.74	Tight
Rear Udder Ht	+0.78	Very High
Udder Support	+0.40	Strong
Udder Depth	-0.03	20cm Above
Front Teat Pl.	+0.64	Close
Teat Length	-0.17	Long
Rear Teat Pl.	+0.66	Close
Teat Pos. Side	+0.35	Apart
Locomotion	+0.44	Excellent
Condition Score	+0.00	High

-2      +2



# GULLIVER

Peak AltaGulliver ET BYF CVF POF RDF CDF

HB No: 65003209641634 AI Code: HO6752  
 Beta Casein A1A2 Source: USA  
 Kappa Casein AB DOB: 27.11.19



Bru-Dale Zeronica ET VG85, 3rd Dam of Gulliver

HOLSTEIN PRODUCTION	
AHDB Dairy	PTA August 2023
Production Reliability 74%	PLI Reliability 74%
<b>PLI</b>	<b>£781</b>
<b>Milk Kg</b>	<b>+785</b>
<b>Fat Kg</b>	<b>+42.4</b>
<b>Fat %</b>	<b>+0.12</b>
<b>Protein Kg</b>	<b>+30.5</b>
<b>Protein %</b>	<b>+0.05</b>
SCI £449	ACI £623 Rel. 74%
Genomic Young Sire Pedigree Index	

- ✓ **Robotic Milking**
- ✓ **Improves Longevity**
- ✓ **Massive Fat Improvement**
- ✓ **Lowers SCC**
- ✓ **Production**
- ✓ **Concept Plus Sire**



## Pursuit X Fabulous X Topshot

MANAGEMENT TRAITS		08/23
Healthy Cow Index	£231	Improver
Enviro Cow Index	+3.8	Improver
Fertility Index	+2.8	Improver
Lifespan	+156	Improver
Somatic Cell Count	-21	Improver
Mastitis	-2	Improver
TB Advantage	-0.3	Desirable
Lameness Index	+1.7	Improver
Maintenance	+3	Desirable
Calf Survival	+3.9	Improver
Direct Calving Ease	-0.3	Easy
Mat. Calving Ease	+1.5	Easy
Gestation Length	-1	Shorter
Digital Dermatitis	+0.4	Improver
Dairy Carcase	+1.2	Improver
Feed Advantage	+95	Improver
Temperament	+0.38	Good
Ease of Milk	-0.18	Fast

Below Average      Average      Above Average

HOLSTEIN CONFORMATION		HUKI 08/23
Young Genomic Pedigree Index		57% Reliability
Type Merit	+1.47	Excellent
Mammary	+1.22	Excellent
Legs & Feet	+0.96	Excellent
Stature	+0.27	160 cm
Chest Width	+0.52	Wide
Body Depth	+0.02	Deep
Angularity	+1.27	Open Rib
Rump Angle	+0.50	Low Pins
Rump Width	+0.69	Wide
Rear Leg Side	+0.57	Sickled
Foot Angle	-0.28	Steep
Fore Udder Att	+0.34	Tight
Rear Udder Ht	+1.40	Very High
Udder Support	+0.50	Strong
Udder Depth	+0.01	20cm Above
Front Teat Pl.	-0.14	Close
Teat Length	-0.41	Long
Rear Teat Pl.	-0.39	Close
Teat Pos. Side	+2.35	Apart
Locomotion	+1.05	Excellent
Condition Score	-0.36	High

-2      +2

# At Your Service...

## Pregnancy Scanning

Regular pregnancy scanning is essential for keeping on top of fertility on any farm. Pre-breeding and pregnancy scanning services are available through AI Services.

## DIY Training courses

Interested in AI? AI Services offers an extensive DIY training course with both veterinary and practical instruction.

## Liquid Nitrogen

AI Services offer a reliable and trusted Liquid Nitrogen Delivery Service, keeping your DIY flask topped up every 3 months.

## Embryo Transfer

At AI Services we have been providing successful Embryo Transfer Services to NI farms for over 20 years. Used by a range of commercial and pedigree beef and dairy herd owners, embryo transfer can fast-track genetic gain by producing up to 20 progeny each year from your best livestock and maximises on breeding by ensuring the continuity of the best bloodlines in the herd.

## DIY Supplies

A selection of AI supplies are available for delivery.

*For more information phone Ballycraigy on (028) 9083 3123.*



**Ai SERVICES**  
- NORTHERN IRELAND -

# KEVLOW

Peak AltaKevlow ET BYF CVF POF RDF CDF

HB No: 65003212150639 AI Code: HO7217  
 Beta Casein A1A1 Source: USA  
 Kappa Casein BE DOB: 25.06.20



HOLSTEIN PRODUCTION	
AHDB Dairy	PTA August 2023
Production Reliability 73%	PLI Reliability 66%
<b>PLI</b>	<b>£823</b>
<b>Milk Kg</b>	<b>+872</b>
<b>Fat Kg</b>	<b>+52.8</b>
<b>Fat %</b>	<b>+0.20</b>
<b>Protein Kg</b>	<b>+38.3</b>
<b>Protein %</b>	<b>+0.11</b>
SCI £523	ACI £649 Rel. 66%
Genomic Young Sire Pedigree Index	

- ✓
**PLI**
- ✓
**Lowers Stature**
- ✓
**Kgs Milk**
- ✓
**Robotic Milking**
- ✓
**+91.1 Kgs Components**
- ✓
**Management Traits**



## Plinko X Marius X Duke

MANAGEMENT TRAITS		08/23
Healthy Cow Index	£119	Improver
Enviro Cow Index	+4.0	Improver
Fertility Index	+4.3	Improver
Lifespan	+67	Improver
Somatic Cell Count	-16	Improver
Mastitis	-2	Improver
TB Advantage	+2.3	Desirable
Lameness Index	+1.9	Improver
Maintenance	+1	Desirable
Calf Survival	-1.9	Improver
Direct Calving Ease	+0.4	Easy
Mat. Calving Ease	+1.3	Easy
Gestation Length	-4	Shorter
Digital Dermatitis	+0.1	Improver
Dairy Carcase	+0.9	Improver
Feed Advantage	+113	Improver
Temperament	+0.78	Good
Ease of Milk	+0.07	Fast

Below Average      Average      Above Average

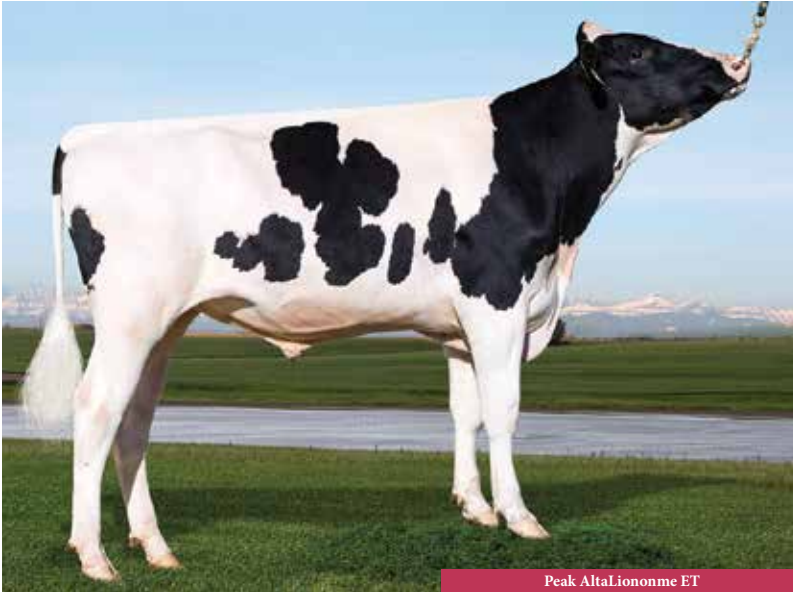
HOLSTEIN CONFORMATION		HUKI 08/23
Young Genomic Pedigree Index		53% Reliability
Type Merit	+0.63	Excellent
Mammary	+0.88	Excellent
Legs & Feet	+0.01	Excellent
Stature	+0.35	160 cm
Chest Width	-0.08	Wide
Body Depth	-0.46	Deep
Angularity	+0.95	Open Rib
Rump Angle	+0.03	Low Pins
Rump Width	+0.97	Wide
Rear Leg Side	-0.01	Sickled
Foot Angle	+0.31	Steep
Fore Udder Att	+0.66	Tight
Rear Udder Ht	+0.63	Very High
Udder Support	+0.14	Strong
Udder Depth	+0.51	20cm Above
Front Teat Pl.	-0.17	Close
Teat Length	-0.40	Long
Rear Teat Pl.	-0.04	Close
Teat Pos. Side	+0.82	Apart
Locomotion	-0.14	Excellent
Condition Score	-0.11	High

-2      +2

# LIENONME

Peak AltaLienonme ET BLF BYF CVF DPF CDF

HB No: 65003215425732 AI Code: HO7096  
 Beta Casein A1A2 Source: USA  
 Kappa Casein AB DOB: 13.08.20



Peak AltaLienonme ET

## HOLSTEIN PRODUCTION

AHDB Dairy PTA August 2023  
 Production Reliability 73% PLI Reliability 66%

<b>PLI</b>	<b>£643</b>
<b>Milk Kg</b>	<b>+768</b>
<b>Fat Kg</b>	<b>+37.4</b>
<b>Fat %</b>	<b>+0.07</b>
<b>Protein Kg</b>	<b>+32.1</b>
<b>Protein %</b>	<b>+0.08</b>
SCI £397	ACI £526 Rel. 66%
<i>Genomic Young Sire Pedigree Index</i>	

- ✓ **Production Sire**
- ✓ **Improves Milking Speed**
- ✓ **Lowers Stature**
- ✓ **Udders**
- ✓ **Strong Robust Cows**
- ✓ **Concept Plus Sire**



## Tiki X Positive X Jedi

MANAGEMENT TRAITS		08/23
Healthy Cow Index	£108	Improver
Enviro Cow Index	+3.2	Improver
Fertility Index	+1.7	Improver
Lifespan	+92	Improver
Somatic Cell Count	-7	Improver
Mastitis	+0	Improver
TB Advantage	+3.0	Desirable
Lameness Index	+2.0	Improver
Maintenance	-1	Desirable
Calf Survival	+0.5	Improver
Direct Calving Ease	-0.1	Easy
Mat. Calving Ease	+1.8	Easy
Gestation Length	-4	Shorter
Digital Dermatitis	+0.0	Improver
Dairy Carcase	+1.1	Improver
Feed Advantage	+64	Improver
Temperament	+0.53	Good
Ease of Milk	+1.42	Fast

Below Average      Average      Above Average

HOLSTEIN CONFORMATION		HUKI 08/23
Young Genomic Pedigree Index		53% Reliability
Type Merit	+1.10	Excellent
Mammary	+1.48	Excellent
Legs & Feet	-0.07	Excellent
Stature	-0.36	160 cm
Chest Width	+0.69	Wide
Body Depth	-0.58	Deep
Angularity	+0.61	Open Rib
Rump Angle	+0.19	Low Pins
Rump Width	+0.36	Wide
Rear Leg Side	+0.74	Sickled
Foot Angle	-0.73	Steep
Fore Udder Att	+1.26	Tight
Rear Udder Ht	+1.41	Very High
Udder Support	-0.02	Strong
Udder Depth	+0.94	20cm Above
Front Teat Pl.	+0.17	Close
Teat Length	-0.05	Long
Rear Teat Pl.	+0.59	Close
Teat Pos. Side	+0.34	Apart
Locomotion	+0.17	Excellent
Condition Score	-0.04	High

-2      +2

# MASK RED

Mask Red ET BLF BYF CVF CDF

HB No: 63000639576868 AI Code: HO7440  
 Beta Casein A2A2 Source: Germany  
 Kappa Casein BB DOB: 20.06.21



HOLSTEIN PRODUCTION	
AHDB Dairy	PTA August 2023
Production Reliability 73%	PLI Reliability 66%
<b>PLI</b>	<b>£611</b>
<b>Milk Kg</b>	<b>+447</b>
<b>Fat Kg</b>	<b>+21.6</b>
<b>Fat %</b>	<b>+0.04</b>
<b>Protein Kg</b>	<b>+24.5</b>
<b>Protein %</b>	<b>+0.11</b>
SCI £400	ACI £505 Rel. 66%
Genomic Young Sire Pedigree Index	

✓ **Positive Components**

✓ **Locomotion**

✓ **Tremendous Feet + Legs**

✓ **Sire of Sons**

✓ **Excels on Management Traits**

✓ **Lowers Stature**



## Stamkose X Wisent X Sunfish

MANAGEMENT TRAITS		08/23
Healthy Cow Index	£189	Improver
Enviro Cow Index	+2.8	Improver
Fertility Index	+4.4	Improver
Lifespan	+92	Improver
Somatic Cell Count	-20	Improver
Mastitis	-2	Improver
TB Advantage	+2.6	Desirable
Lameness Index	+2.7	Improver
Maintenance	-2	Desirable
Calf Survival	-0.2	Improver
Direct Calving Ease	+0.5	Easy
Mat. Calving Ease	+0.9	Easy
Gestation Length	-1	Shorter
Digital Dermatitis	+0.7	Improver
Dairy Carcase	+1.1	Improver
Feed Advantage	+94	Improver
Temperament	-0.40	Good
Ease of Milk	+0.62	Fast

Below Average      Average      Above Average

HOLSTEIN CONFORMATION		HUKI 08/23
Young Genomic Pedigree Index		54% Reliability
Type Merit	+1.39	Excellent
Mammary	+1.10	Excellent
Legs & Feet	+1.71	Excellent
Stature	-0.45	160 cm
Chest Width	+0.32	Wide
Body Depth	-0.12	Deep
Angularity	-0.11	Open Rib
Rump Angle	+0.51	Low Pins
Rump Width	-1.43	Wide
Rear Leg Side	-0.11	Sickled
Foot Angle	+0.79	Steep
Fore Udder Att	+0.97	Tight
Rear Udder Ht	+0.70	Very High
Udder Support	-0.28	Strong
Udder Depth	+1.14	20cm Above
Front Teat Pl.	+0.43	Close
Teat Length	-0.30	Long
Rear Teat Pl.	-0.03	Close
Teat Pos. Side	+0.24	Apart
Locomotion	+1.63	Excellent
Condition Score	+0.78	High

-2      +2

# MASQUERADE

Peak AltaMasquerade ET BLF BYF CVF DPF CDF

HB No: 65003247843505 AI Code: HO7760  
 Beta Casein A1A2 Source: USA  
 Kappa Casein AE DOB: 08.04.22



Peak AltaMasquerade ET

## HOLSTEIN PRODUCTION

AHDB Dairy PTA August 2023  
 Production Reliability 73% PLI Reliability 66%

<b>PLI</b>	<b>£856</b>
<b>Milk Kg</b>	<b>+667</b>
<b>Fat Kg</b>	<b>+47.7</b>
<b>Fat %</b>	<b>+0.23</b>
<b>Protein Kg</b>	<b>+31.6</b>
<b>Protein %</b>	<b>+0.11</b>
SCI £581	ACI £720 Rel. 66%
Genomic Young Sire Pedigree Index	

- ✓ **Daughter Fertility +9.5**
- ✓ **Lowers Rump Angle**
- ✓ **Components**
- ✓ **Top PLI + TPI Sire**
- ✓ **Lowers Stature**
- ✓ **Robotic Milking**



## Kevlow X Pursuit X Medley

MANAGEMENT TRAITS		08/23
Healthy Cow Index	£233	Improver
Enviro Cow Index	+4.1	Improver
Fertility Index	+9.5	Improver
Lifespan	+137	Improver
Somatic Cell Count	-20	Improver
Mastitis	-2	Improver
TB Advantage	+1.8	Desirable
Lameness Index	+2.2	Improver
Maintenance	-3	Desirable
Calf Survival	+0.1	Improver
Direct Calving Ease	+0.0	Easy
Mat. Calving Ease	+1.3	Easy
Gestation Length	-2	Shorter
Digital Dermatitis	+0.3	Improver
Dairy Carcase	+0.6	Improver
Feed Advantage	+118	Improver
Temperament	+0.58	Good
Ease of Milk	+0.78	Fast

Below Average      Average      Above Average

HOLSTEIN CONFORMATION		HUKI 08/23
Young Genomic Pedigree Index		53% Reliability
Type Merit	+1.01	Excellent
Mammary	+0.81	Excellent
Legs & Feet	+0.99	Excellent
Stature	-0.07	160 cm
Chest Width	-0.12	Wide
Body Depth	-1.05	Deep
Angularity	+0.44	Open Rib
Rump Angle	+1.18	Low Pins
Rump Width	+0.17	Wide
Rear Leg Side	+0.50	Sickled
Foot Angle	-0.35	Steep
Fore Udder Att	+0.08	Tight
Rear Udder Ht	+0.68	Very High
Udder Support	+0.08	Strong
Udder Depth	+0.35	20cm Abve
Front Teat Pl.	+0.05	Close
Teat Length	-0.10	Long
Rear Teat Pl.	-0.12	Close
Teat Pos. Side	+1.09	Apart
Locomotion	+0.93	Excellent
Condition Score	+0.01	High

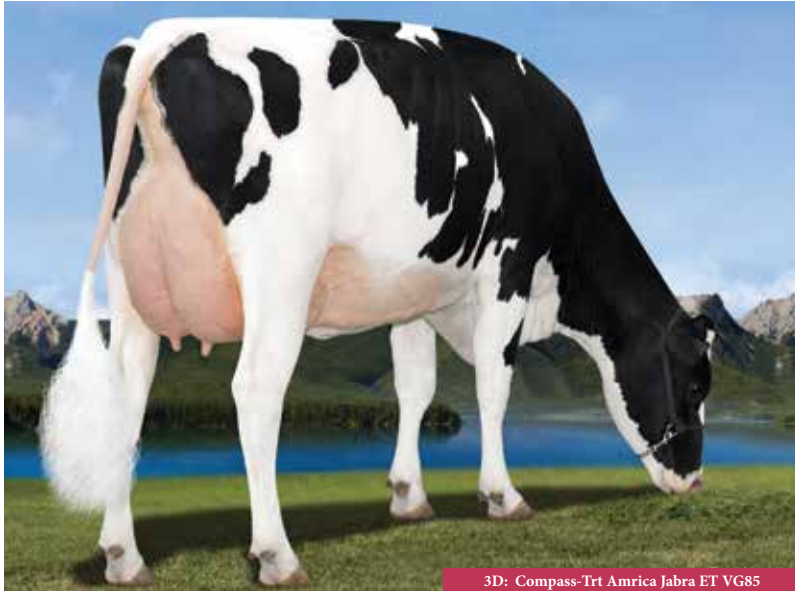
-2      +2

# PELLEGRINO

Pellegrino BLF BYF CVF MFF

Sexed and Conventional

HB No: 71007253843259 AI Code: HO6761  
 Beta Casein A1A1 Source: France  
 Kappa Casein AA DOB: 30.10.19



3D: Compass-Trt Amrica Jabra ET VG85

HOLSTEIN PRODUCTION	
AHDB Dairy Production Reliability 73%	PTA August 2023 PLI Reliability 67%
PLI	£682
Milk Kg	+840
Fat Kg	+31.2
Fat %	-0.03
Protein Kg	+26.7
Protein %	-0.01
SCI £385	ACI £554 Rel. 67%
Genomic Young Sire Pedigree Index	

✓ **Udders**

✓ **Fertility Index**

✓ **Production**

✓ **Lifespan**

✓ **Healthy Cow Index**

✓ **Lowers SCC**

SYNETICS

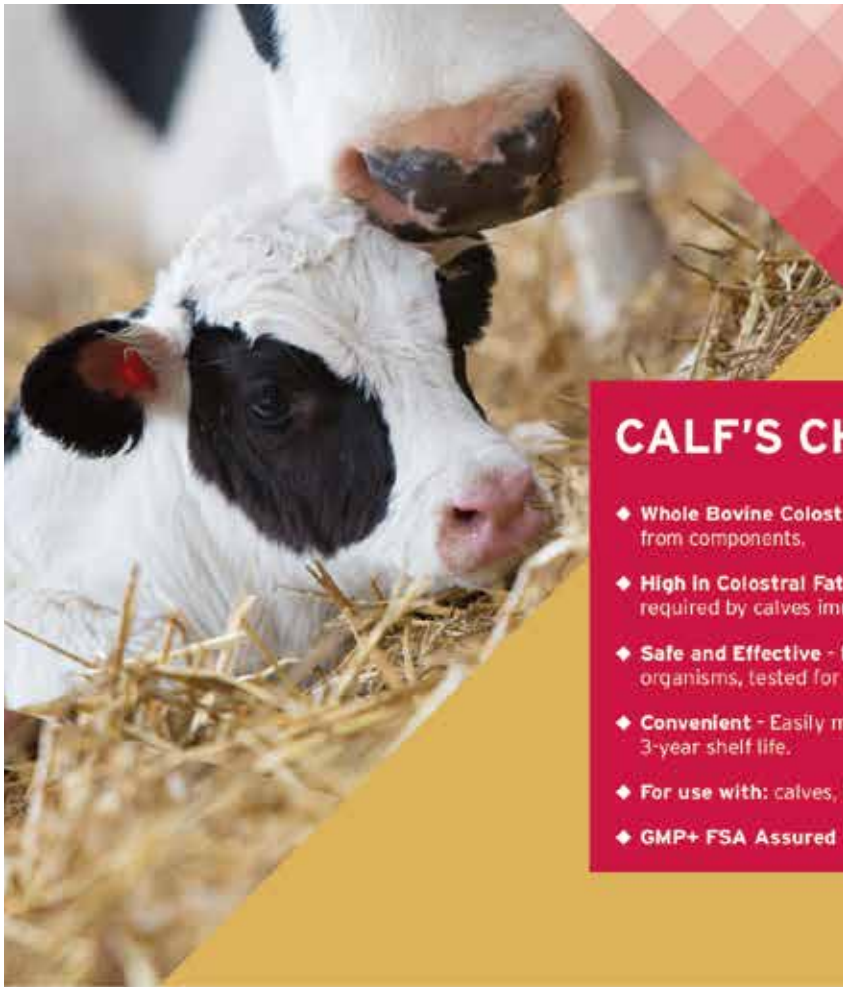
## Topnotch X Router X Muscadet

MANAGEMENT TRAITS		08/23
Healthy Cow Index	£283	Improver
Enviro Cow Index	+2.8	Improver
Fertility Index	+9.4	Improver
Lifespan	+156	Improver
Somatic Cell Count	-26	Improver
Mastitis	-2	Improver
TB Advantage	+1.1	Desirable
Lameness Index	+2.7	Improver
Maintenance	+13	Desirable
Calf Survival	+1.9	Improver
Direct Calving Ease	-0.5	Easy
Mat. Calving Ease	+1.2	Easy
Gestation Length	-2	Shorter
Digital Dermatitis	+0.3	Improver
Dairy Carcase	+1.7	Improver
Feed Advantage	-7	Improver
Temperament	+1.46	Good
Ease of Milk	-0.24	Fast

Below Average      Average      Above Average

HOLSTEIN CONFORMATION		HUKI 08/23 56% Reliability
Young Genomic Pedigree Index		
Type Merit	+1.21	Excellent
Mammary	+2.01	Excellent
Legs & Feet	+0.73	Excellent
Stature	+1.17	160 cm
Chest Width	+0.56	Wide
Body Depth	+0.29	Deep
Angularity	+0.48	Open Rib
Rump Angle	+0.42	Low Pins
Rump Width	+1.02	Wide
Rear Leg Side	-0.46	Sickled
Foot Angle	-0.07	Steep
Fore Udder Att	+1.71	Tight
Rear Udder Ht	+2.22	Very High
Udder Support	+1.34	Strong
Udder Depth	+1.81	20cm Above
Front Teat Pl.	-0.36	Close
Teat Length	-0.09	Long
Rear Teat Pl.	+0.69	Close
Teat Pos. Side	+0.58	Apart
Locomotion	+0.40	Excellent
Condition Score	+1.08	High

-2      +2



## CALF'S CHOICE TOTAL® 100

- ◆ **Whole Bovine Colostrum** - not skimmed or reconstructed from components.
- ◆ **High in Colostral Fat** - important energy source required by calves immediately after birth.
- ◆ **Safe and Effective** - free of disease-causing organisms, tested for safety and efficacy.
- ◆ **Convenient** - Easily mixes in under 15 seconds. 3-year shelf life.
- ◆ **For use with:** calves, lambs and goat kids
- ◆ **GMP+ FSA Assured** 



Rumilife® CAL24™ Nutritional Supplement

# THREE REASONS TO CHOOSE CAL24

## IT'S SIMPLE.

### SAVE TIME AND LABOR

*give two boluses right after calving*

No need for a second bolus 12 hours later



## IT'S UNIQUE.

### TWO FORMS OF READILY AVAILABLE CALCIUM

*plus magnesium & vitamin D*

allow for optimal calcium absorption



## IT'S COMPLETE.

### PROVIDES IMMEDIATE AND SUSTAINED RELEASE CALCIUM

**CALCIUM CHLORIDE** acts rapidly for immediate absorption in the rumen

**CALMIN** regulates absorption over time as a combination of highly-absorbable calcium & magnesium

**VITAMIN D** helps facilitate active, sustained calcium transfer beyond the rumen



**AI SERVICES**  
- NORTHERN IRELAND -

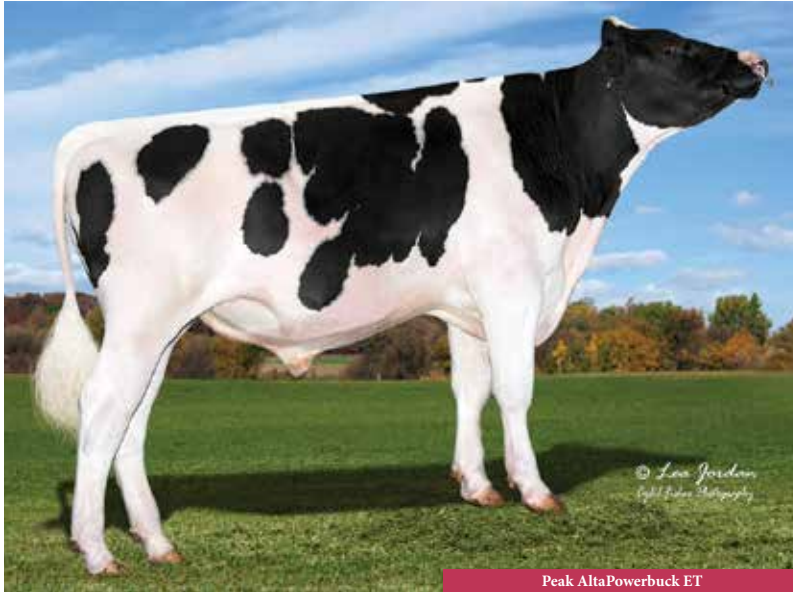
*For further information, contact your local Breeding Specialist.*



# POWERBUCK

Peak AltaPowerbuck ET

HB No: 65003213001199 AI Code: HO7219  
 Beta Casein A1A2 Source: USA  
 Kappa Casein AB DOB: 12.09.20



Peak AltaPowerbuck ET

HOLSTEIN PRODUCTION	
AHDB Dairy	PTA August 2023
Production Reliability 73%	PLI Reliability 66%
<b>PLI</b>	<b>£739</b>
<b>Milk Kg</b>	<b>+918</b>
<b>Fat Kg</b>	<b>+31.5</b>
<b>Fat %</b>	<b>-0.06</b>
<b>Protein Kg</b>	<b>+28.8</b>
<b>Protein %</b>	<b>-0.02</b>
SCI £433	ACI £598 Rel. 66%
Genomic Young Sire Pedigree Index	

✓ **Production**

✓ **Chest Width**

✓ **Healthy Cow Index**

✓ **Robotic Milking**

✓ **Daughter Fertility**

✓ **Lifespan**



## Tiki X Pursuit X Medley

MANAGEMENT TRAITS		08/23
Healthy Cow Index	£285	Improver
Enviro Cow Index	+3.4	Improver
Fertility Index	+9.6	Improver
Lifespan	+189	Improver
Somatic Cell Count	-23	Improver
Mastitis	-3	Improver
TB Advantage	+1.6	Desirable
Lameness Index	+2.5	Improver
Maintenance	+4	Desirable
Calf Survival	+0.2	Improver
Direct Calving Ease	-0.1	Easy
Mat. Calving Ease	+1.6	Easy
Gestation Length	-2	Shorter
Digital Dermatitis	+0.2	Improver
Dairy Carcase	+2.0	Improver
Feed Advantage	+63	Improver
Temperament	+0.21	Good
Ease of Milk	+0.45	Fast

Below Average      Average      Above Average

HOLSTEIN CONFORMATION		HUKI 08/23
Young Genomic Pedigree Index		53% Reliability
Type Merit	+1.54	Excellent
Mammary	+1.67	Excellent
Legs & Feet	+0.89	Excellent
Stature	-0.52	160 cm
Chest Width	+1.48	Wide
Body Depth	-0.81	Deep
Angularity	-0.12	Open Rib
Rump Angle	+0.36	Low Pins
Rump Width	+0.53	Wide
Rear Leg Side	-0.10	Sickled
Foot Angle	+0.06	Steep
Fore Udder Att	+1.23	Tight
Rear Udder Ht	+1.36	Very High
Udder Support	+0.14	Strong
Udder Depth	+0.91	20cm Above
Front Teat Pl.	+0.07	Close
Teat Length	+0.00	Long
Rear Teat Pl.	-0.09	Close
Teat Pos. Side	+0.87	Apart
Locomotion	+0.87	Excellent
Condition Score	+1.54	High

-2      +2

# POWERHOUSE

Peak Powerhouse ET BLF BYF CVF DPF CDF

HB No: 65003235932906 AI Code: HO7487  
 Beta Casein A2A2 Source: USA  
 Kappa Casein AB DOB: 04.08.21



Peak Powerhouse ET

HOLSTEIN PRODUCTION	
AHDB Dairy	PTA August 2023
Production Reliability 73%	PLI Reliability 66%
<b>PLI</b>	<b>£893</b>
<b>Milk Kg</b>	<b>+962</b>
<b>Fat Kg</b>	<b>+51.7</b>
<b>Fat %</b>	<b>+0.14</b>
<b>Protein Kg</b>	<b>+42.9</b>
<b>Protein %</b>	<b>+0.12</b>
SCI £510	ACI £676 Rel. 66%
Genomic Young Sire Pedigree Index	

- ✓ **Exceptionally High Indexes**
- ✓ **No. 4 on UK PLI List**
- ✓ **Top Production Sire**
- ✓ **Improves Rump Structure**
- ✓ **Over 94 Kg Fat + Protein**
- ✓ **Sire of Sons**



## Wheelhouse X Zazzle X Positive

MANAGEMENT TRAITS		08/23
Healthy Cow Index	£154	Improver
Enviro Cow Index	+4.5	Improver
Fertility Index	+0.5	Improver
Lifespan	+122	Improver
Somatic Cell Count	-12	Improver
Mastitis	-2	Improver
TB Advantage	+2.5	Desirable
Lameness Index	+2.1	Improver
Maintenance	+6	Desirable
Calf Survival	+1.4	Improver
Direct Calving Ease	-0.1	Easy
Mat. Calving Ease	+1.6	Easy
Gestation Length	-1	Shorter
Digital Dermatitis	+0.2	Improver
Dairy Carcase	+0.2	Improver
Feed Advantage	+114	Improver
Temperament	+0.94	Good
Ease of Milk	+0.38	Fast

Below Average      Average      Above Average

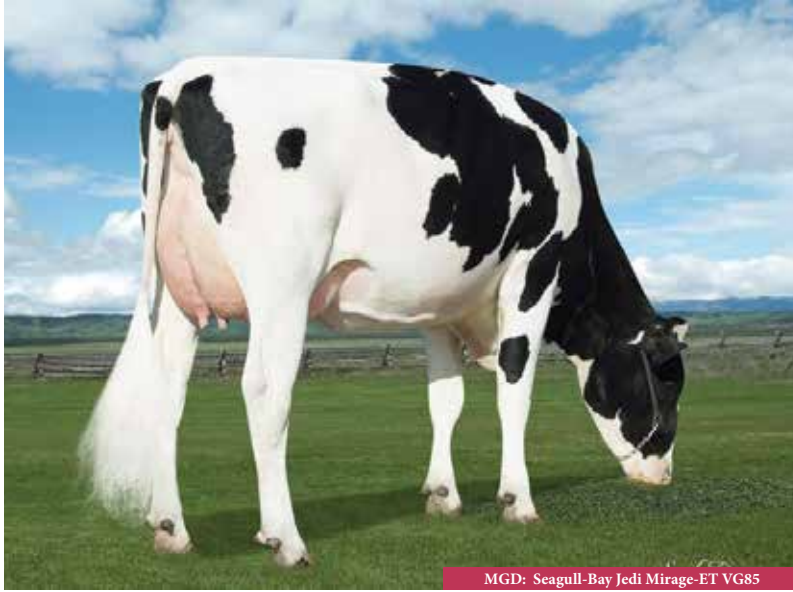
HOLSTEIN CONFORMATION		HUKI 08/23
Young Genomic Pedigree Index		53% Reliability
Type Merit	+1.23	Excellent
Mammary	+0.88	Excellent
Legs & Feet	+0.89	Excellent
Stature	+0.76	160 cm
Chest Width	+0.47	Wide
Body Depth	-0.07	Deep
Angularity	+1.90	Open Rib
Rump Angle	+1.30	Low Pins
Rump Width	+1.55	Wide
Rear Leg Side	-0.19	Sickled
Foot Angle	+0.22	Steep
Fore Udder Att	+0.36	Tight
Rear Udder Ht	+1.14	Very High
Udder Support	-0.75	Strong
Udder Depth	+0.11	20cm Above
Front Teat Pl.	+0.25	Close
Teat Length	-0.58	Long
Rear Teat Pl.	-0.35	Close
Teat Pos. Side	+0.57	Apart
Locomotion	+0.58	Excellent
Condition Score	-0.70	High

-2      +2

# REGULUS

Winstar AltaRegulus ET BYF CVF POF RDF CDF

HB No: 65003212150609 AI Code: HO6888  
 Beta Casein A2A2 Source: USA  
 Kappa Casein BB DOB: 06.06.20



MGD: Seagull-Bay Jedi Mirage-ET VG85

HOLSTEIN PRODUCTION	
AHDB Dairy	PTA August 2023
Production Reliability 73%	PLI Reliability 66%
<b>PLI</b>	<b>£732</b>
<b>Milk Kg</b>	<b>+384</b>
<b>Fat Kg</b>	<b>+47.5</b>
<b>Fat %</b>	<b>+0.37</b>
<b>Protein Kg</b>	<b>+26.5</b>
<b>Protein %</b>	<b>+0.16</b>
SCI £502	ACI £628 Rel. 66%
Genomic Young Sire Pedigree Index	

✓ **Components**

✓ **Rump Width**

✓ **+0.37% Fat**

✓ **PLI**

✓ **Strong Robust Cows**

✓ **Udder Attachment**



## Zazzle X Crimson X Jedi

MANAGEMENT TRAITS		08/23
Healthy Cow Index	£164	Improver
Enviro Cow Index	+3.4	Improver
Fertility Index	+4.6	Improver
Lifespan	+104	Improver
Somatic Cell Count	-20	Improver
Mastitis	-1	Improver
TB Advantage	+0.7	Desirable
Lameness Index	+2.5	Improver
Maintenance	+8	Desirable
Calf Survival	+1.6	Improver
Direct Calving Ease	-1.2	Easy
Mat. Calving Ease	+1.6	Easy
Gestation Length	-1	Shorter
Digital Dermatitis	+0.1	Improver
Dairy Carcase	+1.1	Improver
Feed Advantage	+50	Improver
Temperament	+0.15	Good
Ease of Milk	+0.80	Fast

Below Average      Average      Above Average

HOLSTEIN CONFORMATION		HUKI 08/23
Young Genomic Pedigree Index		55% Reliability
Type Merit	+0.26	Excellent
Mammary	+1.04	Excellent
Legs & Feet	-0.47	Excellent
Stature	+0.53	160 cm
Chest Width	+0.52	Wide
Body Depth	-0.32	Deep
Angularity	+0.04	Open Rib
Rump Angle	+0.53	Low Pins
Rump Width	+0.94	Wide
Rear Leg Side	-0.45	Sickled
Foot Angle	+0.49	Steep
Fore Udder Att	+1.04	Tight
Rear Udder Ht	+0.36	Very High
Udder Support	-0.19	Strong
Udder Depth	+1.12	20cm Above
Front Teat Pl.	+0.70	Close
Teat Length	+0.37	Long
Rear Teat Pl.	+0.61	Close
Teat Pos. Side	-0.31	Apart
Locomotion	-0.58	Excellent
Condition Score	+0.60	High

-2      +2

# RUTILANT RED

Koepon AltaRutilant Red ET

HB No: 63000549118594 AI Code: HO7519  
 Beta Casein A1A1 Source: Holland  
 Kappa Casein BB DOB: 14.03.21



HOLSTEIN PRODUCTION	
AHDB Dairy	PTA August 2023
Production Reliability 73%	PLI Reliability 66%
<b>PLI</b>	<b>£744</b>
<b>Milk Kg</b>	<b>+1030</b>
<b>Fat Kg</b>	<b>+40.1</b>
<b>Fat %</b>	<b>-0.01</b>
<b>Protein Kg</b>	<b>+33.0</b>
<b>Protein %</b>	<b>-0.01</b>
SCI £405	ACI £566 Rel. 66%
Genomic Young Sire Pedigree Index	

- ✓ **Top Ranked RW Holstein**
- ✓ **High Production Sire**
- ✓ **Outstanding Legs + Feet**
- ✓ **Daughter Fertility**
- ✓ **Udders**
- ✓ **Locomotion**



## Sputnik X Altuve X Salvatore

MANAGEMENT TRAITS		08/23
Healthy Cow Index	£217	Improver
Enviro Cow Index	+3.3	Improver
Fertility Index	+4.8	Improver
Lifespan	+122	Improver
Somatic Cell Count	-25	Improver
Mastitis	-2	Improver
TB Advantage	-0.8	Desirable
Lameness Index	+2.4	Improver
Maintenance	+8	Desirable
Calf Survival	+1.3	Improver
Direct Calving Ease	-0.6	Easy
Mat. Calving Ease	+0.8	Easy
Gestation Length	-2	Shorter
Digital Dermatitis	+0.5	Improver
Dairy Carcase	+0.4	Improver
Feed Advantage	+56	Improver
Temperament	+0.23	Good
Ease of Milk	-0.62	Fast

Below Average      Average      Above Average

HOLSTEIN CONFORMATION		HUKI 08/23
Young Genomic Pedigree Index		53% Reliability
Type Merit	+1.19	Excellent
Mammary	+0.85	Excellent
Legs & Feet	+1.62	Excellent
Stature	+0.63	160 cm
Chest Width	+0.55	Wide
Body Depth	-0.03	Deep
Angularity	+0.56	Open Rib
Rump Angle	+1.05	Low Pins
Rump Width	+0.78	Wide
Rear Leg Side	+0.46	Sickled
Foot Angle	+0.38	Steep
Fore Udder Att	+0.36	Tight
Rear Udder Ht	+1.26	Very High
Udder Support	+0.13	Strong
Udder Depth	+0.32	20cm Above
Front Teat Pl.	+1.02	Close
Teat Length	+0.23	Long
Rear Teat Pl.	+0.79	Close
Teat Pos. Side	+0.33	Apart
Locomotion	+1.68	Excellent
Condition Score	+0.66	High

-2      +2

# SAIKO

Peak Saiko

**Sexed and Conventional**

HB No: 65003235932953 AI Code: HO7638  
 Beta Casein A1A2 Source: USA  
 Kappa Casein AA DOB: 16.08.21



HOLSTEIN PRODUCTION	
AHDB Dairy	PTA August 2023
Production Reliability 73%	PLI Reliability 66%
<b>PLI</b>	<b>£729</b>
<b>Milk Kg</b>	<b>+780</b>
<b>Fat Kg</b>	<b>+36.2</b>
<b>Fat %</b>	<b>+0.05</b>
<b>Protein Kg</b>	<b>+29.9</b>
<b>Protein %</b>	<b>+0.05</b>
SCI £440	ACI £593 Rel. 66%
Genomic Young Sire Pedigree Index	

✓ **High Ranking PLI + TPI**

✓ **Calving Ease**

✓ **Production**

✓ **Daughter Fertility**

✓ **Ideal Rump Structure**

✓ **Strong Robust Cows**

**SYNETICS**

## Magnifique X Pursuit X Medley

MANAGEMENT TRAITS		08/23
Healthy Cow Index	£212	Improver
Enviro Cow Index	+3.5	Improver
Fertility Index	+8.0	Improver
Lifespan	+143	Improver
Somatic Cell Count	-19	Improver
Mastitis	-2	Improver
TB Advantage	+1.4	Desirable
Lameness Index	+1.1	Improver
Maintenance	+7	Desirable
Calf Survival	+0.8	Improver
Direct Calving Ease	-0.2	Easy
Mat. Calving Ease	+1.3	Easy
Gestation Length	-1	Shorter
Digital Dermatitis	+0.0	Improver
Dairy Carcase	+0.7	Improver
Feed Advantage	+85	Improver
Temperament	+0.38	Good
Ease of Milk	-0.29	Fast

Below Average      Average      Above Average

HOLSTEIN CONFORMATION		HUKI 08/23
Young Genomic Pedigree Index		53% Reliability
Type Merit	+0.77	Excellent
Mammary	+0.63	Excellent
Legs & Feet	+0.46	Excellent
Stature	+0.10	160 cm
Chest Width	+1.03	Wide
Body Depth	-0.02	Deep
Angularity	+0.28	Open Rib
Rump Angle	+1.32	Low Pins
Rump Width	+0.74	Wide
Rear Leg Side	+0.63	Sickled
Foot Angle	-0.20	Steep
Fore Udder Att	-0.11	Tight
Rear Udder Ht	+0.34	Very High
Udder Support	+0.60	Strong
Udder Depth	-0.03	20cm Above
Front Teat Pl.	+0.73	Close
Teat Length	-0.35	Long
Rear Teat Pl.	+1.37	Close
Teat Pos. Side	+1.46	Apart
Locomotion	+0.42	Excellent
Condition Score	+1.04	High

-2      +2



**PITFIELD**

...With the Animal

## THE ELEMENTAL RANGE

Pitfield Elemental is a range of 6 premium quality, broad spectrum trace element and vitamin drenches.

Our drenches are formulated to correct mineral and vitamin imbalances in the animal and aid in:

- ANIMAL HEALTH
- PRODUCTIVITY
- IMMUNITY
- WEIGHT GAIN
- FERTILITY
- YIELD

## GET THE MOST FROM YOUR ANIMALS GENETICS

Contains a full range of trace elements, vitamins, energy & Omega-3



ELEMENTAL CALF



ELEMENTAL CATTLE



ELEMENTAL DAIRY COW



ELEMENTAL LAMB



ELEMENTAL SHEEP



ELEMENTAL SUCKLER COW



## WHEN TO USE?

- PRE BREEDING
- PRE CALVING OR LAMBING
- DRYING OFF
- TURN OUT
- HOUSING
- WEANING
- ILLNESS

OR IN ADVANCE OF ANY STRESS EVENT FOR THE ANIMAL



Powered by:  
**KAPPAMAX SELECT CHELATES**, formulated with the optimal kappa value & molecular stability for better absorption and protection from lockup.



**Ai SERVICES**  
- NORTHERN IRELAND -

*For further information, contact your local Breeding Specialist.*

# SKOVLY P

VH Slatt Skovly P BLF BYF CVF POC CDF

HB No: 6100000261780 AI Code: HO7345  
 Beta Casein A2A2 Source: Denmark  
 Kappa Casein BB DOB: 27.05.20



Skovly P

HOLSTEIN PRODUCTION	
AHDB Dairy	PTA August 2023
Production Reliability 73%	PLI Reliability 67%
<b>PLI</b>	<b>£664</b>
<b>Milk Kg</b>	<b>+481</b>
<b>Fat Kg</b>	<b>+32.3</b>
<b>Fat %</b>	<b>+0.15</b>
<b>Protein Kg</b>	<b>+27.3</b>
<b>Protein %</b>	<b>+0.13</b>
SCI £463	ACI £572 Rel. 73%
Genomic Young Sire Pedigree Index	

- ✓ **Components**
- ✓ **Improves Milking Speed**
- ✓ **Fertility Index**
- ✓ **Outcross Pedigree**
- ✓ **Udders**
- ✓ **Teat Length**



## Slatt P X Nerd RC X Balisto

MANAGEMENT TRAITS		08/23
Healthy Cow Index	£184	Improver
Enviro Cow Index	+2.8	Improver
Fertility Index	+7.6	Improver
Lifespan	+73	Improver
Somatic Cell Count	-12	Improver
Mastitis	-1	Improver
TB Advantage	+1.1	Desirable
Lameness Index	+2.3	Improver
Maintenance	+3	Desirable
Calf Survival	+0.8	Improver
Direct Calving Ease	+0.1	Easy
Mat. Calving Ease	+1.0	Easy
Gestation Length	+0	Shorter
Digital Dermatitis	+0.5	Improver
Dairy Carcase	+1.5	Improver
Feed Advantage	+38	Improver
Temperament	-0.42	Good
Ease of Milk	+1.30	Fast

Below Average      Average      Above Average

HOLSTEIN CONFORMATION		HUKI 08/23
Young Genomic Pedigree Index		54% Reliability
Type Merit	+1.06	Excellent
Mammary	+1.37	Excellent
Legs & Feet	+1.10	Excellent
Stature	+0.85	160 cm
Chest Width	-0.54	Wide
Body Depth	-0.58	Deep
Angularity	+0.78	Open Rib
Rump Angle	-0.88	Low Pins
Rump Width	+1.25	Wide
Rear Leg Side	-0.01	Sickled
Foot Angle	+0.83	Steep
Fore Udder Att	+1.16	Tight
Rear Udder Ht	+1.26	Very High
Udder Support	+0.64	Strong
Udder Depth	+1.94	20cm Above
Front Teat Pl.	+0.67	Close
Teat Length	+0.31	Long
Rear Teat Pl.	+1.17	Close
Teat Pos. Side	+0.72	Apart
Locomotion	+0.75	Excellent
Condition Score	+0.49	High

-2      +2

# SPLINK

Splink BLF BYF CVF MFF

**Sexed and Conventional**

HB No: 71003616641325 AI Code: HO7637  
 Beta Casein A2A2 Source: France  
 Kappa Casein AA DOB: 13.08.21



HOLSTEIN PRODUCTION	
AHDB Dairy	PTA August 2023
Production Reliability 73%	PLI Reliability 66%
<b>PLI</b>	<b>£759</b>
<b>Milk Kg</b>	<b>+582</b>
<b>Fat Kg</b>	<b>+45.2</b>
<b>Fat %</b>	<b>+0.25</b>
<b>Protein Kg</b>	<b>+29.7</b>
<b>Protein %</b>	<b>+0.12</b>
SCI £520	ACI £634 Rel. 73%
Genomic Young Sire Pedigree Index	

✓ **Excellent Sire Stack**

✓ **Impressive Udders**

✓ **High Kg + % Fat + Protein**

✓ **Calving Ease**

✓ **Improves Teat Length**

✓ **Improves Milking Speed**

**SYNETICS**

## Plinko X Pursuit X Hotline

MANAGEMENT TRAITS		08/23
Healthy Cow Index	£170	Improver
Enviro Cow Index	+3.6	Improver
Fertility Index	+7.8	Improver
Lifespan	+95	Improver
Somatic Cell Count	-9	Improver
Mastitis	-1	Improver
TB Advantage	+0.9	Desirable
Lameness Index	+3.3	Improver
Maintenance	-1	Desirable
Calf Survival	-0.8	Improver
Direct Calving Ease	+0.2	Easy
Mat. Calving Ease	+1.5	Easy
Gestation Length	-2	Shorter
Digital Dermatitis	+0.3	Improver
Dairy Carcase	+0.4	Improver
Feed Advantage	+04	Improver
Temperament	-0.21	Good
Ease of Milk	+1.29	Fast

Below Average      Average      Above Average

HOLSTEIN CONFORMATION		HUKI 08/23
Young Genomic Pedigree Index		53% Reliability
Type Merit	+1.08	Excellent
Mammary	+1.00	Excellent
Legs & Feet	+0.58	Excellent
Stature	+0.18	160 cm
Chest Width	-0.08	Wide
Body Depth	+0.02	Deep
Angularity	+1.15	Open Rib
Rump Angle	-0.69	Low Pins
Rump Width	+0.48	Wide
Rear Leg Side	+1.39	Sickled
Foot Angle	-0.43	Steep
Fore Udder Att	+0.47	Tight
Rear Udder Ht	+1.03	Very High
Udder Support	+0.87	Strong
Udder Depth	-0.08	20cm Above
Front Teat Pl.	+0.13	Close
Teat Length	+1.15	Long
Rear Teat Pl.	+0.54	Close
Teat Pos. Side	+1.37	Apart
Locomotion	+0.62	Excellent
Condition Score	-0.21	High

-2      +2



# SULIEN

Peak AltaSulien ET BYF CVF POF RDF CDF

Sexed and Conventional

HB No: 65003209641528 AI Code: HO7429  
 Beta Casein A1A2 Source: USA  
 Kappa Casein AB DOB: 26.10.19



HOLSTEIN PRODUCTION	
AHDB Dairy	PTA August 2023
Production Reliability 74%	PLI Reliability 68%
PLI	£726
Milk Kg	+446
Fat Kg	+37.8
Fat %	+0.23
Protein Kg	+27.3
Protein %	+0.15
SCI £449	ACI £584 Rel. 68%
Genomic Young Sire Pedigree Index	

- ✓ **Robotic Milking**
- ✓ **Longevity Improver**
- ✓ **Excellent Legs + Feet**
- ✓ **Management Traits**
- ✓ **Components**
- ✓ **Locomotion**



## Pursuit X Robson X Denver

MANAGEMENT TRAITS		08/23
Healthy Cow Index	£199	Improver
Enviro Cow Index	+3.6	Improver
Fertility Index	+3.5	Improver
Lifespan	+153	Improver
Somatic Cell Count	-17	Improver
Mastitis	-2	Improver
TB Advantage	+1.1	Desirable
Lameness Index	+2.6	Improver
Maintenance	+9	Desirable
Calf Survival	+0.5	Improver
Direct Calving Ease	-0.6	Easy
Mat. Calving Ease	+0.9	Easy
Gestation Length	-2	Shorter
Digital Dermatitis	+0.4	Improver
Dairy Carcase	+0.4	Improver
Feed Advantage	+68	Improver
Temperament	+0.32	Good
Ease of Milk	+0.81	Fast

Below Average      Average      Above Average

HOLSTEIN CONFORMATION		HUKI 08/23
Young Genomic Pedigree Index		57% Reliability
Type Merit	+1.54	Excellent
Mammary	+0.99	Excellent
Legs & Feet	+1.51	Excellent
Stature	+0.33	160 cm
Chest Width	+1.26	Wide
Body Depth	+0.67	Deep
Angularity	+0.81	Open Rib
Rump Angle	+0.22	Low Pins
Rump Width	+1.12	Wide
Rear Leg Side	+0.66	Sickled
Foot Angle	-0.28	Steep
Fore Udder Att	+0.42	Tight
Rear Udder Ht	+0.81	Very High
Udder Support	-0.23	Strong
Udder Depth	+0.27	20cm Above
Front Teat Pl.	+0.43	Close
Teat Length	+0.32	Long
Rear Teat Pl.	-0.61	Close
Teat Pos. Side	+0.82	Apart
Locomotion	+1.73	Excellent
Condition Score	+0.61	High

-2      +2

**Sexed and Conventional**

HB No: 65003235933044 AI Code: HO7635  
 Beta Casein A1A1 Source: France  
 Kappa Casein AB DOB: 03.09.21



HOLSTEIN PRODUCTION	
AHDB Dairy	PTA August 2023
Production Reliability 73%	PLI Reliability 66%
PLI	£757
Milk Kg	+620
Fat Kg	+45.9
Fat %	+0.24
Protein Kg	+30.3
Protein %	+0.11
SCI £445	ACI £594 Rel. 66%
Genomic Young Sire Pedigree Index	

- ✓ **Strong Robust Cows**
- ✓ **Milking Speed**
- ✓ **Improves Rump Width**
- ✓ **Udders**
- ✓ **Component Specialist**
- ✓ **Lowers SCC**

**SYNETICS**

## Magnifique X Zazzle X Lawson

MANAGEMENT TRAITS		08/23
Healthy Cow Index	£197	Improver
Enviro Cow Index	+3.4	Improver
Fertility Index	+4.4	Improver
Lifespan	+113	Improver
Somatic Cell Count	-22	Improver
Mastitis	-2	Improver
TB Advantage	+2.7	Desirable
Lameness Index	+2.3	Improver
Maintenance	+20	Desirable
Calf Survival	+1.3	Improver
Direct Calving Ease	+0.0	Easy
Mat. Calving Ease	+1.5	Easy
Gestation Length	-4	Shorter
Digital Dermatitis	+0.3	Improver
Dairy Carcase	+0.7	Improver
Feed Advantage	+27	Improver
Temperament	+0.04	Good
Ease of Milk	+0.60	Fast

Below Average      Average      Above Average

HOLSTEIN CONFORMATION		HUKI 08/23
Young Genomic Pedigree Index		53% Reliability
Type Merit	+1.00	Excellent
Mammary	+1.06	Excellent
Legs & Feet	+0.50	Excellent
Stature	+1.08	160 cm
Chest Width	+1.84	Wide
Body Depth	+1.23	Deep
Angularity	+1.07	Open Rib
Rump Angle	1.22	Low Pins
Rump Width	+1.75	Wide
Rear Leg Side	+0.70	Sickled
Foot Angle	-0.11	Steep
Fore Udder Att	+1.23	Tight
Rear Udder Ht	+0.97	Very High
Udder Support	-0.06	Strong
Udder Depth	+0.59	20cm Above
Front Teat Pl.	+1.24	Close
Teat Length	-0.28	Long
Rear Teat Pl.	+1.21	Close
Teat Pos. Side	-0.08	Apart
Locomotion	+0.46	Excellent
Condition Score	+0.29	High

-2      +2

# TRY

Trent-Way-JS AltaTry Red ET BLF BYF CVF POF CDF

HB No: 65003213815980 AI Code: HO7215  
 Beta Casein A1A1 Source: USA  
 Kappa Casein BB DOB: 17.06.20



Trent-Way-JS AltaTry Red ET

HOLSTEIN PRODUCTION	
AHDB Dairy	PTA August 2023
Production Reliability 73%	PLI Reliability 66%
<b>PLI</b>	<b>£558</b>
<b>Milk Kg</b>	<b>+641</b>
<b>Fat Kg</b>	<b>+31.6</b>
<b>Fat %</b>	<b>+0.07</b>
<b>Protein Kg</b>	<b>+30.3</b>
<b>Protein %</b>	<b>+0.10</b>
SCI £319	ACI £433 Rel. 66%
Genomic Young Sire Pedigree Index	

✓ **Udders**

✓ **Production**

✓ **Type**

✓ **Milking Speed**

✓ **Strength**

✓ **Outcross Pedigree**



## Tomcruise X Royal X Silver

MANAGEMENT TRAITS		08/23
Healthy Cow Index	£80	Improver
Enviro Cow Index	+2.4	Improver
Fertility Index	+1.6	Improver
Lifespan	+27	Improver
Somatic Cell Count	-8	Improver
Mastitis	+0	Improver
TB Advantage	-0.2	Desirable
Lameness Index	+1.7	Improver
Maintenance	+11	Desirable
Calf Survival	+0.5	Improver
Direct Calving Ease	-1.2	Easy
Mat. Calving Ease	+0.8	Easy
Gestation Length	-3	Shorter
Digital Dermatitis	+0.5	Improver
Dairy Carcase	+0.7	Improver
Feed Advantage	+12	Improver
Temperament	+0.72	Good
Ease of Milk	+1.66	Fast

Below Average      Average      Above Average

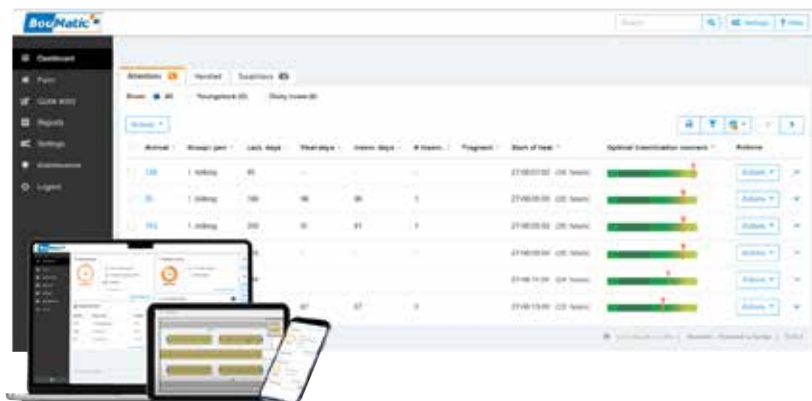
HOLSTEIN CONFORMATION		HUKI 08/23
Young Genomic Pedigree Index		54% Reliability
Type Merit	+1.32	Excellent
Mammary	+1.89	Excellent
Legs & Feet	+0.44	Excellent
Stature	+0.90	160 cm
Chest Width	+0.77	Wide
Body Depth	+0.85	Deep
Angularity	+0.99	Open Rib
Rump Angle	-0.41	Low Pins
Rump Width	+0.91	Wide
Rear Leg Side	-1.30	Sickled
Foot Angle	+0.60	Steep
Fore Udder Att	+1.61	Tight
Rear Udder Ht	+1.81	Very High
Udder Support	+1.16	Strong
Udder Depth	+0.93	20cm Above
Front Teat Pl.	+1.03	Close
Teat Length	-0.96	Long
Rear Teat Pl.	+1.09	Close
Teat Pos. Side	+1.06	Apart
Locomotion	+0.52	Excellent
Condition Score	+0.38	High

-2      +2

# KNOW YOUR COW

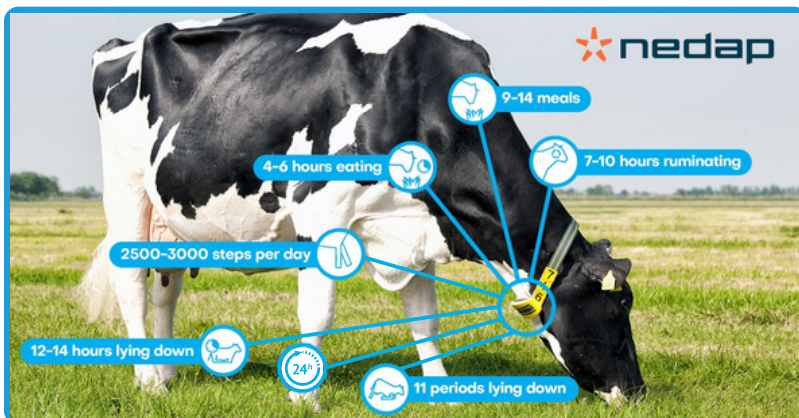


AI SERVICES  
- NORTHERN IRELAND -



*BouMatic's RealTime powered by Nedap provides accurate heat detection with health monitoring directly to you.*

"The *RealTime* system is like having an extra pair of eyes on the farm because the cows are being monitored 24/7"



To find out more about Boumatic Real Time collars contact your AI Services breeding specialist to find out more.



Powered by  nedap



SCAN TO FIND OUT MORE

# WHEELHOUSE

Peak Wheelhouse ET BLF BYF CVF RDF CDF

HB No: 65003209641362 AI Code: HO6603  
 Beta Casein A2A2 Source: USA  
 Kappa Casein AB DOB: 09.02.19



3D: Bryhill Ransom Marquise -ET

HOLSTEIN PRODUCTION	
AHDB Dairy	PTA August 2023
Production Reliability 74%	PLI Reliability 68%
<b>PLI</b>	<b>£693</b>
<b>Milk Kg</b>	<b>+660</b>
<b>Fat Kg</b>	<b>+41.3</b>
<b>Fat %</b>	<b>+0.17</b>
<b>Protein Kg</b>	<b>+26.3</b>
<b>Protein %</b>	<b>+0.05</b>
SCI £407	ACI £559 Rel. 68%
Genomic Young Sire Pedigree Index	

✓ **Power and Strength**

✓ **Daughter Fertility**

✓ **Production**

✓ **Wide Rumps**

✓ **Sire of Sons**

✓ **Improves all Management Traits**



## Pursuit X Duke X Rubicon

MANAGEMENT TRAITS		08/23
Healthy Cow Index	£206	Improver
Enviro Cow Index	+3.3	Improver
Fertility Index	+5.6	Improver
Lifespan	+149	Improver
Somatic Cell Count	-14	Improver
Mastitis	-1	Improver
TB Advantage	+2.1	Desirable
Lameness Index	+2.6	Improver
Maintenance	+13	Desirable
Calf Survival	+1.3	Improver
Direct Calving Ease	+0.2	Easy
Mat. Calving Ease	+1.5	Easy
Gestation Length	-1	Shorter
Digital Dermatitis	+0.2	Improver
Dairy Carcase	+0.7	Improver
Feed Advantage	+36	Improver
Temperament	+0.12	Good
Ease of Milk	+0.59	Fast

Below Average      Average      Above Average

HOLSTEIN CONFORMATION		HUKI 08/23
Young Genomic Pedigree Index		57% Reliability
Type Merit	+1.43	Excellent
Mammary	+1.32	Excellent
Legs & Feet	+0.48	Excellent
Stature	+0.35	160 cm
Chest Width	+1.88	Wide
Body Depth	+0.64	Deep
Angularity	+1.03	Open Rib
Rump Angle	+1.65	Low Pins
Rump Width	+2.11	Wide
Rear Leg Side	+0.69	Sickled
Foot Angle	-0.47	Steep
Fore Udder Att	+0.55	Tight
Rear Udder Ht	+1.21	Very High
Udder Support	+0.69	Strong
Udder Depth	+0.24	20cm Above
Front Teat Pl.	+1.66	Close
Teat Length	-1.34	Long
Rear Teat Pl.	+1.48	Close
Teat Pos. Side	+1.14	Apart
Locomotion	+0.68	Excellent
Condition Score	+0.54	High

-2      +2

# YOUBETCHA

Peak AltaYoubetcha ET BLF BYF CVF DPF CDF

HB No: 65003236692425 AI Code: HO7707  
 Beta Casein A2A2 Source: USA  
 Kappa Casein AB DOB: 15.07.21



3 Dam: Pine-TRee 9882 Prof 7019-ET VG86

## HOLSTEIN PRODUCTION

AHDB Dairy PTA August 2023  
 Production Reliability 73% PLI Reliability 66%

PLI	£841
Milk Kg	+677
Fat Kg	+43.8
Fat %	+0.19
Protein Kg	+31.9
Protein %	+0.11
SCI £550	ACI £696 Rel. 66%
Genomic Young Sire Pedigree Index	

- ✓ **High Index Sire**
- ✓ **Improves Longevity**
- ✓ **Daughter Fertility**
- ✓ **Negative Angularity**
- ✓ **Lowers Stature with Increase Rump Width**
- ✓ **Component Specialist**



## Wheelhouse X Solution X Medley

MANAGEMENT TRAITS		08/23
Healthy Cow Index	£222	Improver
Enviro Cow Index	+4.1	Improver
Fertility Index	+7.1	Improver
Lifespan	+153	Improver
Somatic Cell Count	-19	Improver
Mastitis	-2	Improver
TB Advantage	+0.6	Desirable
Lameness Index	+1.6	Improver
Maintenance	+3	Desirable
Calf Survival	+1.6	Improver
Direct Calving Ease	+0.0	Easy
Mat. Calving Ease	+1.6	Easy
Gestation Length	-1	Shorter
Digital Dermatitis	+0.0	Improver
Dairy Carcase	+0.8	Improver
Feed Advantage	+116	Improver
Temperament	-0.15	Good
Ease of Milk	+0.26	Fast

Below Average Average Above Average

## HOLSTEIN CONFORMATION

Young Genomic Pedigree Index		HUK1 08/23
		53% Reliability
Type Merit	+0.64	Excellent
Mammary	+0.43	Excellent
Legs & Feet	+0.54	Excellent
Stature	-0.76	160 cm
Chest Width	+1.66	Wide
Body Depth	-0.58	Deep
Angularity	-0.37	Open Rib
Rump Angle	+0.81	Low Pins
Rump Width	+0.58	Wide
Rear Leg Side	+1.25	Sickled
Foot Angle	-0.58	Steep
Fore Udder Att	+0.23	Tight
Rear Udder Ht	+0.37	Very High
Udder Support	-0.66	Strong
Udder Depth	-0.05	20cm Above
Front Teat Pl.	+0.38	Close
Teat Length	-0.37	Long
Rear Teat Pl.	-0.06	Close
Teat Pos. Side	+1.03	Apart
Locomotion	+0.73	Excellent
Condition Score	+1.81	High

-2 +2

# ANTONIO

Daughter Proven

Aurora AltaAntonio ET BLF BYF CVF DPF CDF



HB No: 6500313894818 AI Code: HO5198  
 Beta Casein A2A2 Source: USA  
 Kappa Casein BB DOB: 16.10.16



Daughter: Fugazza Antonio Tapla, from Italy

**Bandares X Commander X  
 Mayfield**

HOLSTEIN CONFORMATION		HUKI 08/23	
Interbull Type Proof		90% Reliability, 104 UK Daughters in 17 UK Herds	
Type Merit	+1.44		Excellent
Mammary	+0.44		Excellent
Legs & Feet	+1.63		Excellent
	-2		+2

HOLSTEIN PRODUCTION			
AHDB Dairy		PTA August 2023	
Production Reliability 99%		PLI Reliability 94%	
PLI	£670	Milk Kg	+708
Fat Kg	+33.9	Fat %	+0.06
Protein Kg	+27.5	Protein %	+0.05
SCI £415	ACI £559	Rel. 94%	
Daughter Proven - 104 UK Daughters in 17 UK Herds			

✓ Production      ✓ Fertility

MANAGEMENT TRAITS			
Healthy Cow Index	£192	Calf Survival	+2.5
Enviro Cow Index	+3.1	Dir. Calving Ease	-0.8
Fertility Index	+7.5	Mat. Calving Ease	+0.8
Lifespan	+113	Gestation Length	+1
Somatic Cell Ct	-8	Digital Dermatitis	+0.7
Mastitis	+0	Dairy Carcase Index	+0.3
TB Advantage	-5.9	Feed Advantage	+74
Lameness Index	+2.2	Temperament	+0.32
Maintenance	+1	Ease of Milk	+2.52

# GARIDO

Daughter Proven



HB No: 60000122629481 AI Code:  
 Beta Casein A1A2 Source: Germany  
 Kappa Casein AE DOB: 24.08.17



Daughter: BGW Garida VG86

**Gymnast X Penley X Boss**

HOLSTEIN CONFORMATION		HUKI 08/23	
Interbull Type Proof		71% Reliability, 3103 Daughters in 829 Herds	
Type Merit	+1.29		Excellent
Mammary	+1.49		Excellent
Legs & Feet	+1.26		Excellent
	-2		+2

HOLSTEIN PRODUCTION			
AHDB Dairy		PTA August 2023	
Production Reliability 81%		PLI Reliability 81%	
PLI	£609	Milk Kg	+815
Fat Kg	+42.6	Fat %	+0.11
Protein Kg	+30.3	Protein %	+0.04
SCI £360	ACI £497	Rel. 81%	
Daughter Proven - 3103 Daughters in 829 Herds			

✓ Production      ✓ Robotic Milking

MANAGEMENT TRAITS			
Healthy Cow Index	£130	Maintenance	+7
Enviro Cow Index	+2.6	Dir. Calving Ease	+0.2
Fertility Index	+0.7	Mat. Calving Ease	+0.8
Lifespan	+79	Temperament	+0.86
Somatic Cell Ct	-20	Ease of Milk	+0.66
Mastitis	-2		

# IZZA

Peak AltaIzza ET BLF DPF POF RDF CDF


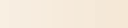
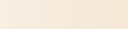
**Daughter Proven**



HB No: 65003200824743 AI Code: HO6305  
 Beta Casein A1A2 Source: USA  
 Kappa Casein AB DOB: 20.01.19



## Hotjob X Jedi X Bombero

HOLSTEIN CONFORMATION			HUKI 08/23
Young Genomic Pedigree Index			58% Reliability
Type Merit	+1.1		Excellent
Mammary	+1.6		Excellent
Legs & Feet	+0.3		Excellent

-2                                  +2

HOLSTEIN PRODUCTION			
AHDB Dairy		PTA August 2023	
Production Reliability 82%		PLI Reliability 71%	
PLI	£554	Milk Kg	+706
Fat Kg	+32.2	Fat %	+0.04
Protein Kg	+32.6	Protein %	+0.10
SCI £340	ACI £445	Rel.	71%

*Daughter Proven - 91 Daughters in 16 Herds*



Type



Components

MANAGEMENT TRAITS				08/23
Healthy Cow Index	£65	Calf Survival	-3.6	
Enviro Cow Index	+2.7	Dir. Calving Ease	-0.3	
Fertility Index	+2.7	Mat. Calving Ease	+1.6	
Lifespan	+73	Gestation Length	-3	
Somatic Cell Ct	-8	Digital Dermatitis	-0.3	
Mastitis	+0	Dairy Carcase Index	+2.0	
TB Advantage	-0.5	Feed Advantage	-19	
Lameness Index	+1.3	Temperament	+0.96	
Maintenance	+11	Ease of Milk	+1.33	

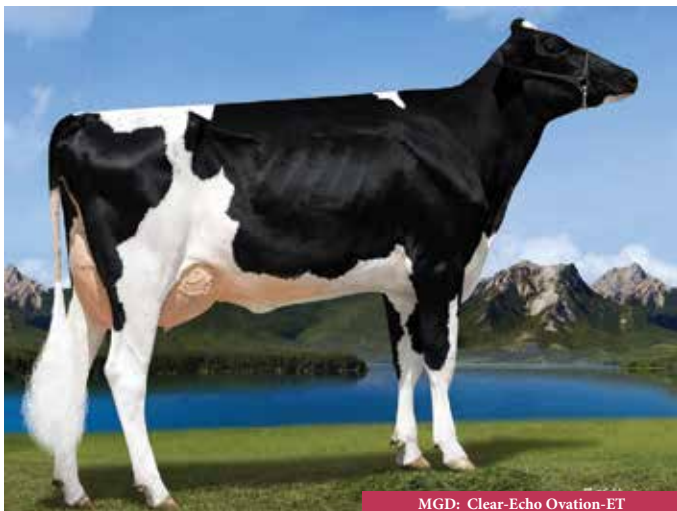
# PLINKO

Peak AltaPlinko ET BLF CVF POF RDF CDF

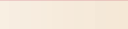
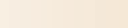
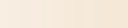
**Daughter Proven**



HB No: 65003200824505 AI Code: HO6125  
 Beta Casein A1A2 Source: USA  
 Kappa Casein AB DOB: 17.10.18



## Marius X Topshot X Yodera

HOLSTEIN CONFORMATION			HUKI 08/23
Young Genomic Pedigree Index			56% Reliability
Type Merit	-0.01		Excellent
Mammary	-0.05		Excellent
Legs & Feet	+0.09		Excellent

-2                                  +2

HOLSTEIN PRODUCTION			
AHDB Dairy		PTA August 2023	
Production Reliability 83%		PLI Reliability 72%	
PLI	£721	Milk Kg	+889
Fat Kg	+43.8	Fat %	+0.09
Protein Kg	+36.7	Protein %	+0.08
SCI £485	ACI £593	Rel.	72%

*Daughter Proven - 23 Daughters in 7 Herds*



Milk



Daughter Fertility

MANAGEMENT TRAITS				08/23
Healthy Cow Index	£82	Calf Survival	-3.8	
Enviro Cow Index	+3.6	Dir. Calving Ease	+0.9	
Fertility Index	+5.1	Mat. Calving Ease	+1.1	
Lifespan	+61	Gestation Length	-5	
Somatic Cell Ct	-11	Digital Dermatitis	+0.3	
Mastitis	-1	Dairy Carcase Index	+0.4	
TB Advantage	+0.4	Feed Advantage	+128	
Lameness Index	+2.5	Temperament	+0.26	
Maintenance	-10	Ease of Milk	+0.19	



# SPITFIRE

Daughter Proven

Heidenskipster Spitfire BLF BYF CVF DPF RDF CDF



Daughter: MB Lona

**Mr Salvatore X Montross X  
Numero Uno**

HOLSTEIN CONFORMATION		HUKI 08/23	
Interbull Type Proof		75% Reliability, 1404 Daughters in 460 Herds	
Type Merit	+2.82	<div style="width: 100%;"></div>	Excellent
Mammary	+2.61	<div style="width: 100%;"></div>	Excellent
Legs & Feet	+2.24	<div style="width: 100%;"></div>	Excellent
-2		+2	

SYNETICS

HB No: 63000571956700 AI Code: HO7225  
Beta Casein A1A2 Source: Holland  
Kappa Casein AB DOB: 16.06.17

## HOLSTEIN PRODUCTION

AHDB Dairy PTA August 2023  
Production Reliability 86% PLI Reliability 83%

PLI	£564	Milk Kg	+781
Fat Kg	+30.9	Fat %	+0.00
Protein Kg	+20.2	Protein %	-0.06
SCI £282	ACI £422	Rel. 83%	
Daughter Proven - 4755 Daughters in 1505 Herds			

✓ Type

✓ Widespread Proof

## MANAGEMENT TRAITS

08/23

Healthy Cow Index	£216	Calf Survival	+0.7
Enviro Cow Index	+2.7	Dir. Calving Ease	+0.1
Fertility Index	-0.2	Mat. Calving Ease	+1.2
Lifespan	+149	Gestation Length	-1
Somatic Cell Ct	-24	Digital Dermatitis	+0.5
Mastitis	-2	Dairy Carcase Index	+0.4
TB Advantage	+2	Feed Advantage	+69
Lameness Index	+2.4	Temperament	+1.02
Maintenance	-1	Ease of Milk	+0.34

# TOPSHOT

Daughter Proven

Bomaz Alta Topshot ET BLF BYF CVF DPF POF RDF CDF



Daughter: Bomaz Topshot 7745 VG85

**Supershot X Embassy X Robust**

HOLSTEIN CONFORMATION		HUKI 08/23	
Interbull Type Proof		97% Reliability, 567 UK Daughters in 95 UK Herds	
Type Merit	-0.37	<div style="width: 25%;"></div>	Excellent
Mammary	-0.19	<div style="width: 25%;"></div>	Excellent
Legs & Feet	-0.43	<div style="width: 25%;"></div>	Excellent
-2		+2	

Alta

HB No: 65000073953444 AI Code: HO4739  
Beta Casein A2A2 Source: USA  
Kappa Casein BB DOB: 10.06.15

## HOLSTEIN PRODUCTION

AHDB Dairy PTA August 2023  
Production Reliability 99% PLI Reliability 99%

PLI	£624	Milk Kg	+727
Fat Kg	+33.3	Fat %	+0.05
Protein Kg	+29.5	Protein %	+0.06
SCI £416	ACI £535	Rel. 98%	
Daughter Proven - 2404 UK Daughters in 289 UK Herds			

✓ Production

✓ Robust Cows

## MANAGEMENT TRAITS

08/23

Healthy Cow Index	£120	Calf Survival	+15
Enviro Cow Index	+2.9	Dir. Calving Ease	-0.7
Fertility Index	+2.8	Mat. Calving Ease	+0.9
Lifespan	+67	Gestation Length	-4
Somatic Cell Ct	-15	Digital Dermatitis	+0.2
Mastitis	-2	Dairy Carcase Index	+2.6
TB Advantage	+0.1	Feed Advantage	+89
Lameness Index	+2.6	Temperament	+0.18
Maintenance	-7	Ease of Milk	-0.37

# MINERALS & DOSING SYSTEMS TO SUIT ALL HERDS

The diagram illustrates four different mineral dosing systems:

- OPIS:** A green dosing unit with a screen, receiving 'WATER IN' and 'MINERALS IN' from blue and red barrels. It is connected to a water trough where a cow is drinking. A callout shows a cow's body with various mineral icons (Cu, Mg, Zn, Se, Co, P).
- IN-WATER OPTION:** A similar setup to OPIS, showing a cow drinking from a trough.
- MIXER WAGON OPTION:** A green mixer wagon with a hopper, receiving mineral input from a barrel. A callout shows a truck with mineral icons (Cu, Mg, Zn, Se, Co, P) being loaded.
- ORBVIE MOBILE OPTION:** A green battery-operated dosing device (ORBVIEW) floating in a trough, controlled by a mobile app. A callout shows the device with the ORBVIE logo.

**CUSTOM BLENDS AVAILABLE**  
20KG / 200KG / 1000KG

**BATTERY-OPERATED, CONTROLLED BY MOBILE APP**

**ORBVIE**

**MOBILE OPTION**

**OPIS**

**IN-WATER OPTION**

**MIXER WAGON OPTION**

**WATER IN**

**MINERALS IN**

**CALVING**

**FERTILITY**

**BLOAT**

**MILK PRODUCTION**

**HERD HEALTH**

**Co**, **Mg**, **Zn**, **Se**, **P**, **Cu**

**Co**, **Mg**, **Zn**, **Se**, **P**, **Cu**

**ORBVIEW**

**ORBVIEW**

**TERRA NutriTECH**

**Ai SERVICES**  
- NORTHERN IRELAND -



EVERY ANIMAL. EVERY TIME.



*For further information, contact your local Breeding Specialist.*

# ATHENS

FB AltaAthens ET BYF CVF POF RDF CDF

Heroic X Nitro X Jedi



Type	
Type Merit	+0.85
Mammary	+0.96
Legs + Feet	+0.07

Management	
Fertility	+4.3
Lifespan	+24
SCC	-7

Holstein Production	
AHDB Dairy	08/2023
Prod. Rel. 73%	PLI Rel. 67%
PLI	£561
Milk Kg	+665
Fat Kg	+39.6
Fat %	+0.14
Protein Kg	+28.1
Protein %	+0.07
Genomic Young Sire Pedigree Index	

HB No: 65003207773351 AI Code: HO6748  
Beta Casein A1A2 Source: Germany  
Kappa Casein BB DOB: 02.11.19



# ASCARI

VH Tirsvad Alberta Ascari

Alberta X Pogba X Style



Type	
Type Merit	+0.34
Mammary	+1.06
Legs + Feet	-0.15

Management	
Fertility	+11.3
Lifespan	+98
SCC	-8

Holstein Production	
AHDB Dairy	08/2023
Prod. Rel. 72%	PLI Rel. 67%
PLI	£614
Milk Kg	+530
Fat Kg	+23.6
Fat %	+0.03
Protein Kg	+26.1
Protein %	+0.10
Genomic Young Sire Pedigree Index	

HB No: 61000000261308 AI Code: HO6927  
Beta Casein A2A2 Source: Denmark  
Kappa Casein BB DOB: 20.10.19



# SOLDADO

Soldado and Cows

Poulidor X Jazz X Benwood P

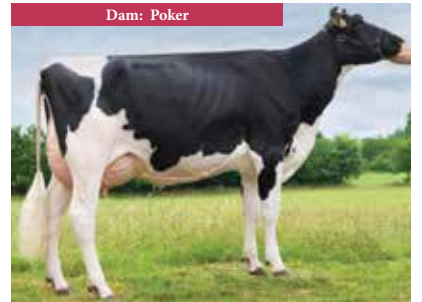


Type	
Type Merit	+0.88
Mammary	+1.69
Legs + Feet	+0.16

Management	
Fertility	+5.3
Lifespan	+61
SCC	-17

Holstein Production	
AHDB Dairy	08/2023
Prod. Rel. 72%	PLI Rel. 65%
PLI	£644
Milk Kg	+733
Fat Kg	+35.6
Fat %	+0.07
Protein Kg	+31.8
Protein %	+0.09
Genomic Young Sire Pedigree Index	

HB No: 71004445551044 AI Code: HO7484  
Beta Casein A2A2 Source: France  
Kappa Casein AB DOB: 05.05.21



# REVERSE

Peak AltaReverse BLF DPF POF RDF CDF

Lawson X Jedi X Yoder



Type	
Type Merit	-0.20
Mammary	-0.03
Legs + Feet	-0.16

Management	
Fertility	+8.2
Lifespan	+79
SCC	-8

Holstein Production	
AHDB Dairy	08/2023
Prod. Rel. 74%	PLI Rel. 69%
PLI	£654
Milk Kg	+644
Fat Kg	+30.2
Fat %	+0.05
Protein Kg	+32.5
Protein %	+0.13
Genomic Young Sire Pedigree Index	

HB No: 65003200824565 AI Code: HO6131  
Beta Casein A2A2 Source: USA  
Kappa Casein AB DOB: 17.11.18



# SOLACE

Peak AltaSolace ET

Plinko X Crimson X Duke



Type	
Type Merit	+0.15
Mammary	+1.07
Legs + Feet	-0.45

Management	
Fertility	+15.5
Lifespan	+134
SCC	-30

Holstein Production	
AHDB Dairy	08/2023
Prod. Rel. 73%	PLI Rel. 66%
PLI	£788
Milk Kg	+592
Fat Kg	+37.3
Fat %	+0.15
Protein Kg	+29.1
Protein %	+0.11
Genomic Young Sire Pedigree Index	

HB No: 65003224956159 AI Code: HO7373  
Beta Casein A1A2 Source: USA  
Kappa Casein BB DOB: 13.02.21



# Beef Sires for the Dairy Herd

## GRENADE

**ABERDEEN ANGUS**  
HW Grenade  
HB No: UK546977102535  
DOB: 01.03.19

*Exceptional  
Growth Rates*

*EBVs suggest  
improvement  
in Muscle  
Development*

*Use on cows until  
detailed calving  
survey completed*



### Calving Survey Information

No. Surveys 30 Cows and 1 Heifers	31
Surgical Vet Assistance	3.2%
Non-Surgical Vet Asst	0.0%
Gestation Length	288 Days

## MR KAYO

**ABERDEEN ANGUS**  
Glenbrae Red Mr Kayo W825  
HB No: UK939290404825  
DOB: 15.04.2020

*Kayo is a Red  
Angus with above  
average Growth  
and Muscling*

*Smooth fleshing  
sire suitable for  
crossing*

*Early calving  
information  
suggests Calving  
Ease*



### Calving Survey Information

No. Surveys 147 Cows and 10 Heifers	157
Surgical Vet Assistance	3.2%
Non-Surgical Vet Asst	1.3%
Gestation Length	291 Days

## ROCKET

**ABERDEEN ANGUS**  
Thrunton Rocket L282  
HB No: UK106935301282  
DOB: 04.06.11

*Excellent Progeny  
Suitable for Dairy  
Cows*

*Short Gestation*



### Calving Survey Information

No. Surveys 138 Cows and 76 Heifers	214
Surgical Vet Assistance	1.0%
Non-Surgical Vet Asst	2.4%
Gestation Length	284 Days

## IFOR

**LIMOUSIN**  
Ampertaine Ifor  
HB No: MGD13-8897  
DOB: 26.09.13

*Exceptional  
Growth  
Reliability*

*Use on mature  
cows only*



### Calving Survey Information

No. Surveys 162 Cows and 45 Heifers	207
Surgical Vet Assistance	3.9%
Non-Surgical Vet Asst	3.9%
Gestation Length	292 Days

## HIGHWAY

**ABERDEEN ANGUS**  
Drumhill Lord Highway V271  
HB No: UK959342703271  
DOB: 24.04.19

*Highway is bred  
from a successful  
and proven cow  
family*

*Tremendous  
indexes for both  
Terminal and  
Maternal*

*Use only on cows  
until a detailed  
calving survey is  
completed*



### Calving Survey Information

No. Surveys 10 Cows and 1 Heifers	11
Surgical Vet Assistance	0.0%
Non-Surgical Vet Asst	0.0%
Gestation Length	288 Days

## FRANKY

**INRA-95**  
Franky  
HB No: FR8128401071  
DOB: 11.11.10

*INRA-95 is a  
composite breed  
specially for use on  
Dairy Cows for:*

*Good Early  
Growth*

*Extra Muscularity  
in Hindquarter*

*Smaller Calves to  
promote Calving  
Ease*



### FRENCH PERFORMANCE DATA

Calving Ease	Total Merit for Beef Abilities	Muscular Development
100	130	145

*AI Services is committed to supplying the very best Beef Sires for use on dairy cows. Almost all of the sires selected have had detailed calving surveys carried out and have had progeny inspected for suitability.*

# OLAF

**BRITISH BLUE**  
Chatham Olaf  
HB No: B-20190926  
DOB: 25.09.19



*Top Performance Sire*

*Low Birth Rate*

*Exceptional Muscle Development*

08/23 British Blue Breedplan EBVs				
	Calv Ease Direct %	Birth Wt Kg	BBB Carcase Profitability GBP	BBB Pedigree Breeding GBP
EBV	+0.4	+2.6	+28	+21
Breed Average EBVs for 2021 Born Calves				
EBV	-0.3	+2.4	+12	+5

# SILAS

**HEREFORD**  
Graceland 1 Silas  
HB No: UK924024809644  
DOB: 15.06.19



*Top Performance Sire*

*Style and Quality*

*High Growth Rates*

Calving Survey Information	
No. Surveys 11 Cows and 2 Heifers	13
Surgical Vet Assistance	0.0%
Non-Surgical Vet Asst	0.0%
Gestation Length	285 Days

# NED

**BRITISH BLUE**  
Chatham Ned  
HB No: B-20180498  
DOB: 15.05.18



*Exceptional Length and Muscling*

*Excellent EBVs for Growth and Overall Index*

*Top 5% of the breed for Carcase Profitability*

*Use on cows only until a detailed calving survey is completed*

08/23 British Blue Breedplan EBVs				
	Calv Ease Direct %	Birth Wt Kg	BBB Carcase Profitability GBP	BBB Pedigree Breeding GBP
EBV	+0.5	+2.5	+24	+16
Breed Average EBVs for 2021 Born Calves				
EBV	-0.3	+2.4	+12	+5

# ULSTERMAN

**HEREFORD**  
Barnburn 1 Ulsterman (P)  
HB No: UK937266703097  
DOB: 03.09.20



*Ulsterman combines style and quality with performance*

*EBVs suggest low Birth Weight*

*Suitable for breeding suckler replacements*

07/23 Hereford Breedplan EBVs				
	Calv Ease Direct %	Birth Wt Kg	BBB Carcase Profitability GBP	BBB Pedigree Breeding GBP
EBV	+2.2	+2.2	+31	+39
Breed Average EBVs for 2021 Born Calves				
EBV	-0.2	+0.6	+26	+32

# JUBILANT

**BRITISH BLUE**  
Knockagh Jubilant  
HB No: B-20141285  
DOB: 04.12.14



*Calving Ease sire*

*Excellent colour marking*

*Recommended on Holstein cows*

Calving Survey Information	
No. Surveys 76 Cows and 4 Heifers	80
Surgical Vet Assistance	0.0%
Non-Surgical Vet Asst	0.0%
Gestation Length	284 Days

# GRISY

**CHAROLAIS CULARD**  
Grisy  
HB No: FR6950643724  
DOB: 30.07.11



*Tremendous Muscling Ability*

*Above Average Growth*

*High Carcass Value*

*Average Calving Ease*

*Excellent Conformation*

FRENCH PERFORMANCE DATA		
Calving Ease	Total Merit for Beef Abilities	Economic Proof for Beef Abilities
104	111	€55

# Fertility Boost

AI Services offers a selection of mixed beef semen. Mixed semen of this nature has been shown to significantly improve conception rates.

## Available Fertility Boost Mixtures

	Sire 1	Sire 2	Sire 3
Triple Mix British Blue	<i>Knockagh Jubilant</i>	<i>Boroside Luxury</i>	<i>Chatham Olaf</i>
Triple Mix British Blue	<i>Boroside Incredible</i>	<i>Boroside Luxury</i>	<i>Chatham Olaf</i>
Triple Mix Aberdeen Angus	<i>Drumhill Lord Highway</i>	<i>Drumhill Explorer</i>	<i>HW Grenade</i>
AA x AA x HER	<i>HW Grenade</i>	<i>Drumhill Lord Highway</i>	<i>Normanton 1 Willy Wonka</i>
AA x BB x HER	<i>Drumhill Explorer</i>	<i>Chatham Ned</i>	<i>Normanton 1 Willy Wonka</i>
AA x BB x HER	<i>HW Grenade</i>	<i>Chatham Olaf</i>	<i>Graceland 1 Silas</i>
AA x HER x LIM	<i>HW Grenade</i>	<i>Graceland 1 Silas</i>	<i>Ampertaine Ifor</i>
BS x BG x HER	<i>Craigfaddock Parnassus</i>	<i>Ballylough High Hope</i>	<i>Graceland 1 Silas</i>



*HW Grenade*



*Boroside Luxury*



*Normanton 1 Willy Wonka*



*Drumhill Explorer*



*Chatham Olaf*



*Ampertaine Ifor*

Additional Mixes are available by request. Individual sires may change in the mixture from time to time.

# Key Elements of Dairy Evaluations

High-quality cows with good genetics are at the heart of profitable dairy farming. Without this, there's a limit to your herd's performance, no matter how good your management is. Breeding indexes and traits can help you make the right breeding decisions.

This isn't just about genetics for milk production. It's also about health, welfare, management and type traits, which all contribute to your profitability. All of these can be improved through breeding.

Poor breeding decisions can mean the difference between profit and loss, and even between the survival and failure of your business.

Breeding decisions are cumulative – the effects build up over generations, meaning that improvements can be introduced over just a few years through the breeding choices you make.

## PLI, SCI and ACI

**Profitable Lifetime Index (€PLI)** is expressed as a financial value and indicates the additional profit that a daughter of a high €PLI bull is expected to earn over her lifetime. It is designed for all-year-long calving herds.

**Spring Calving Index (€SCI)** is suitable for spring block-calving herds and was developed to breed cows that produce lower volumes of milk of a higher quality.

**Autumn Calving Index (€ACI)** is suitable for autumn block-calving herds and reflects the costs of feeding for winter milk production and the higher milk price per litre received at that time of year.

## Production PTAs

You can use production PTAs to allow selection to produce cows that best suit the available milking contract.

Genetic indexes for production were the first to be introduced and have played an essential part in the increases in milk production that farmers have achieved in recent decades.

The production traits for which all male and female dairy cattle are assigned a genetic index are **Milk (kg)**, **Fat (kg)**, **Fat (%)**, **Protein (kg)** and **Protein (%)**.

The range of values for a PTA will vary from trait to trait. For example, a milk (kg) PTA may exceed 1,000 kg, whereas a fat (kg) PTA is unlikely to be more than 50 kg.

**Persistency** PTAs give you an indication of a bull's daughters' ability to maintain production throughout lactation. A higher persistency PTA generally reflects a flatter lactation curve.

## Conformation PTAs

Type traits play an important role in determining a cow's suitability for sustained milk production.

Linear type traits describe the physical attributes that make up how a cow looks, and are measured on a linear scale.

**Feet and Legs** and **Udder Composites** are described in terms of desirability. Higher scores indicate the best overall quality.

**Type Merit** predicts a bull's ability to transmit overall type. It's based on a combination of his daughters' scores for Feet and Legs, Udder and body conformation, in order of importance.

## Health, welfare and fitness traits

Breeding for these traits makes it possible to produce cows with a higher chance of experiencing better health and welfare or that can better fight off infection. Including health traits in your breeding decisions will have a positive cumulative effect on your herd.

**HealthyCow** enables farmers to select bulls that will breed even more fertile, healthier cows that stay in the herd for longer. Progeny from the top-ranking HealthyCow index show a higher health status throughout their longer lifetime.

**EnviroCow** identifies bulls which transmit the best environmental credentials to their daughters. These will be cows which are predicted to create the least GHG emissions in their lifetimes for each kilogram of solids-corrected milk they produce.

**Fertility Index** predicts female fertility. A bull with an above-average FI will breed cows with improved calving intervals and better non-return rates. Using bulls with the best FI can reduce calving interval by around seven days in one generation.

**Lifespan** PTAs predict reduced or increased daughter survival and are expressed as extra days of life, with positive indexes being desirable.

**Somatic Cell Count (SCC)** PTAs predict changes in a daughter's somatic cell count, with negative figures desirable.

**Mastitis** PTAs indicate a bull's ability to transmit mastitis resistance to his daughters. Negative figures are also desirable.

**TB Advantage** helps dairy farmers breed cattle with improved resistance to bovine tuberculosis. Positive scores are desirable.

**Lameness Advantage** PTAs can be used to reduce cases of lameness in the herd, with positive indexes desirable.

**Calf Survival** PTAs indicate sires with increased calf survival rates between tagging and 10 months of age.

**Digital Dermatitis Index** indicates resistance to digital dermatitis, with positive figures being desirable.

## Calving PTAs

Positive Calving Ease indexes figures predict easier-than-average calvings and negative figures predict more difficult calvings.

**Direct Calving Ease** predicts the ease with which a calf by that sire will be born. You should avoid negative dCE% when breeding maiden heifers, as these are predicted to give a higher proportion of difficult calvings.

**Maternal Calving Ease** predicts the ease with which a daughter of that sire will give birth.

**Gestation Length** is expressed in days and ranges from +7 days (longer) to -7 days (shorter). The heritability of gestation length is 43%, indicating that genetics plays a large role in reducing gestation length.

## Management PTAs

Temperament, ease of milking, calving ease and maintenance traits can make a difference to the smooth running and management of your farm.

**Maintenance** PTAs estimate the feed efficiency differences of animals. Negative figures are desirable, as progeny will have lower feed costs.

**Dairy Carcase Index** predicts carcase conformation and average daily carcase gain in a bull's progeny, with positive figures desirable.

**Feed Advantage** identifies bulls that transmit good feed conversion on to their daughters. It is expressed in kilograms of dry matter intake (DMI) saved during each lactation.

**Temperament** is expressed on a standardised scale of -3 to +3, with the highest indexes indicating the predicted transmission of a placid temperament.

**Ease of milking** is also expressed on a -3 to +3 scale. Negative figures represent hard-milking cows, while positive figures predict fast milking cows.



# Ai SERVICES

- NORTHERN IRELAND -

Ballycraigy 671 Antrim Road  
Newtownabbey Co Antrim  
BT36 4RL

Tel: 028 9083 3123

Web: [www.ai-services.co.uk](http://www.ai-services.co.uk)

Email: [info@ai-services.co.uk](mailto:info@ai-services.co.uk)

To Book a Service  
Call or Pregnancy  
Scan,  
Telephone:

**028 9083 3123**

## At Your Service . . .

Headquarters and Stud Facility Ballycraigy 028 9083 3123

Breeding Information Ivan Minford 078 3118 9852  
028 9083 3123

[iminford@ai-services.co.uk](mailto:iminford@ai-services.co.uk)

Michelle Hill 028 9083 3123

[mhill@ai-services.co.uk](mailto:mhill@ai-services.co.uk)

### BREEDING SPECIALISTS

#### ANTRIM / LONDONDERRY

Ben Mallon 078 8444 3899

Ivan Minford 078 3118 9852

Gary Henderson 079 8934 6226

#### DOWN

James Compston 079 7660 5701

#### FERMANAGH / TYRONE

John Sproule 077 7816 9263

#### ARMAGH / TYRONE

Nigel Spence 078 0927 4141

#### EMBRYO TRANSFER

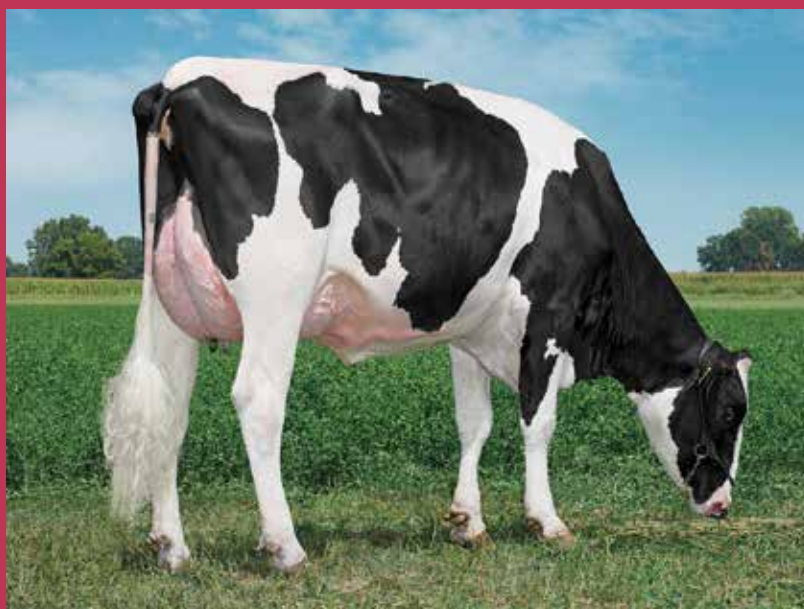
David McCall 077 7880 5357

#### STUD MANAGER

Robin Boyd 077 9934 6784

#### DIY TRAINING

Ballycraigy 028 9083 3123



### Our Breeding Partners

