

Holstein Update

Spring 2023



*The Building
Blocks to Long
Term Profitability*



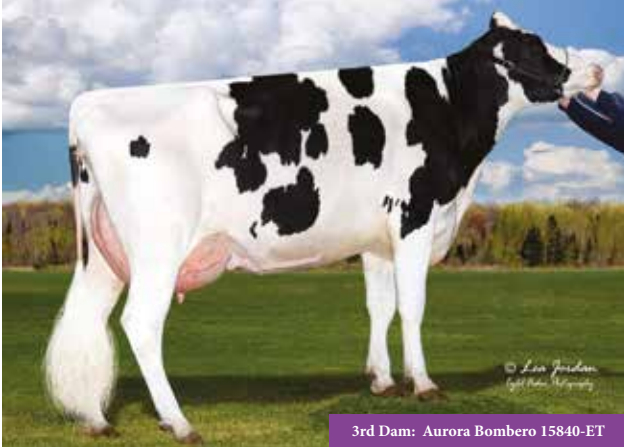
Ai SERVICES
- NORTHERN IRELAND -

ATHENS

FB AltaAthens ET BYF CVF POF RDF CDF



HB No 65003207773351 AI Code HO6748
 Beta Casein A1A2 Source USA
 Kappa Casein BB DOB 02.11.19



3rd Dam: Aurora Bombero 15840-ET

HOLSTEIN PRODUCTION

AHDB Dairy PTA 12/2022
 Production Rel. 67% PLI Rel. 64%

| | |
|--|--------------|
| PLI | £626 |
| Milk Kg | +787 |
| Fat Kg | +44.9 |
| Fat % | +0.15 |
| Protein Kg | +31.4 |
| Protein % | +0.06 |
| SCI £398 ACI £504 Rel. 64% | |
| Genomic Young Sire Pedigree Index | |

✓ **Lowers Stature**

✓ **High Production**

✓ **Udders**

✓ **Improves Teat Length**

✓ **+76 Kg Fat + Protein**

✓ **Locomotion**



GGI-SPERMEX

Heroic X AltaNitro X Jedi

| MANAGEMENT TRAITS | | 12/22 |
|-------------------|-------|-----------|
| HealthyCow Index | £76 | Improver |
| Enviro Cow Index | +2.9 | Improver |
| Fertility Index | +3.8 | Improver |
| Lifespan | +37 | Improver |
| Somatic Cell Ct | -7 | Improver |
| Mastitis | +0 | Improver |
| TB Advantage | +0.4 | Desirable |
| Lameness Index | +0.8 | Improver |
| Maintenance | -5 | Desirable |
| Calf Survival | -0.6 | Improver |
| Dir. Calving Ease | -0.5 | Easy |
| M. Calving Ease | +1.2 | Easy |
| Gestation Length | -1 | Shorter |
| Dig. Dermatitis | -0.2 | Improver |
| Dairy Carcase | +0.5 | Improver |
| Feed Advantage | +2 | Improver |
| Temperament | +0.72 | Good |
| Ease of Milk | -0.13 | Fast |

Below Average Average Above Average

HOLSTEIN CONFORMATION

Young Genomic Pedigree Index

HUKI 12/22

55% Reliability

| | | |
|-----------------|-------|------------|
| Type Merit | +1.06 | Excellent |
| Mammary | +0.96 | Excellent |
| Legs & Feet | +0.41 | Excellent |
| Stature | -0.02 | 160 cm |
| Chest Width | -0.38 | Wide |
| Body Depth | +0.43 | Deep |
| Angularity | +1.28 | Open Rib |
| Rump Angle | -0.45 | Low Pins |
| Rump Width | +0.35 | Wide |
| Rear Leg Side | -0.05 | Sickled |
| Foot Angle | +0.11 | Steep |
| Fore Udder Att | +0.30 | Tight |
| Rear Udder Ht | +1.21 | Very High |
| Udder Support | +1.58 | Strong |
| Udder Depth | +0.00 | 20cm Above |
| Front Teat Pl. | +1.04 | Close |
| Teat Length | +0.80 | Long |
| Rear Teat Pl. | +2.30 | Close |
| Teat Pos. Side | +0.89 | Apart |
| Locomotion | +0.47 | Excellent |
| Condition Score | -1.23 | High |

-2 +2

LIENONME

Peak AltaLienonme ET BLF BYF CVF DPF CDF



HB No 65003215425732 AI Code HO7096
 Beta Casein A1A2 Source USA
 Kappa Casein AB DOB 13.08.20



Peak AltaLienonme ET

HOLSTEIN PRODUCTION

AHDB Dairy PTA 12/2022
 Production Rel. 67% PLI Rel. 63%

| | |
|-----------------------------------|--------------|
| PLI | £710 |
| Milk Kg | +911 |
| Fat Kg | +43.5 |
| Fat % | +0.08 |
| Protein Kg | +35.6 |
| Protein % | +0.06 |
| SCI £411 ACI £553 Rel. 63% | |
| Genomic Young Sire Pedigree Index | |

✓ **Big Production Sire**

✓ **Positive Teat Length**

✓ **Lowers Stature**

✓ **Udders**

✓ **Strong Robust Cows**

✓ **Concept Plus Sire**



Tiki X Positive X Jedi

| MANAGEMENT TRAITS | | 12/22 |
|-------------------|-------|-----------|
| HealthyCow Index | £122 | Improver |
| Enviro Cow Index | +3.4 | Improver |
| Fertility Index | +2.0 | Improver |
| Lifespan | +92 | Improver |
| Somatic Cell Ct | -10 | Improver |
| Mastitis | +0 | Improver |
| TB Advantage | +2.6 | Desirable |
| Lameness Index | +1.3 | Improver |
| Maintenance | +2 | Desirable |
| Calf Survival | +1.3 | Improver |
| Dir. Calving Ease | +0.3 | Easy |
| M. Calving Ease | +1.5 | Easy |
| Gestation Length | -3 | Shorter |
| Dig. Dermatitis | -0.1 | Improver |
| Dairy Carcase | +0.7 | Improver |
| Feed Advantage | +52 | Improver |
| Temperament | +0.83 | Good |
| Ease of Milk | +1.33 | Fast |

Below Average Average Above Average

HOLSTEIN CONFORMATION

Young Genomic Pedigree Index

HUKI 12/22
 53% Reliability

| | | |
|-----------------|-------|------------|
| Type Merit | +1.23 | Excellent |
| Mammary | +1.42 | Excellent |
| Legs & Feet | +0.10 | Excellent |
| Stature | -0.29 | 160 cm |
| Chest Width | +1.03 | Wide |
| Body Depth | -0.29 | Deep |
| Angularity | +0.65 | Open Rib |
| Rump Angle | +0.26 | Low Pins |
| Rump Width | +0.51 | Wide |
| Rear Leg Side | +0.54 | Sickled |
| Foot Angle | -0.49 | Steep |
| Fore Udder Att | +1.32 | Tight |
| Rear Udder Ht | +1.30 | Very High |
| Udder Support | -0.01 | Strong |
| Udder Depth | +0.77 | 20cm Above |
| Front Teat Pl. | +0.15 | Close |
| Teat Length | +0.02 | Long |
| Rear Teat Pl. | +0.56 | Close |
| Teat Pos. Side | +0.16 | Apart |
| Locomotion | +0.24 | Excellent |
| Condition Score | +0.21 | High |

-2 +2

MASK RED

Mask Red ET BLF BYF CVF CDF



HB No 63000639576868 AI Code HO7440
Beta Casein A2A2 Source Germany
Kappa Casein BB DOB

MGD: Red Rocks Massia 128 VG86



HOLSTEIN PRODUCTION

AHDB Dairy PTA 12/2022

Production Rel. 67% PLI Rel. 63%

PLI **£670**

Milk Kg **+556**

Fat Kg **+26.8**

Fat % **+0.05**

Protein Kg **+28.4**

Protein % **+0.11**

SCI £404 ACI £529 Rel. 63%

Genomic Young Sire Pedigree Index

- ✓ High Ranking German Sire
- ✓ Excels on Management Traits
- ✓ Tremendous Feet + Legs
- ✓ Sire of Sons
- ✓ Excellent Locomotion
- ✓ Lowers Stature

Stamkose X Wisent X Sunfish

MANAGEMENT TRAITS

12/22

| | | | |
|-------------------|-------|--|-----------|
| HealthyCow Index | £198 | | Improver |
| Enviro Cow Index | +3.2 | | Improver |
| Fertility Index | +4.1 | | Improver |
| Lifespan | +128 | | Improver |
| Somatic Cell Ct | -20 | | Improver |
| Mastitis | -2 | | Improver |
| TB Advantage | +2.2 | | Desirable |
| Lameness Index | +1.9 | | Improver |
| Maintenance | +1.0 | | Desirable |
| Calf Survival | +0.0 | | Improver |
| Dir. Calving Ease | +0.6 | | Easy |
| M. Calving Ease | +0.5 | | Easy |
| Gestation Length | -1 | | Shorter |
| Dig. Dermatitis | +0.7 | | Improver |
| Dairy Carcase | +1.2 | | Improver |
| Feed Advantage | +77 | | Improver |
| Temperament | -0.20 | | Good |
| Ease of Milk | +0.08 | | Fast |

Below Average Average Above Average

HOLSTEIN CONFORMATION

Young Genomic Pedigree Index

HUKI 12/22

53% Reliability

| | | | |
|-----------------|-------|--|------------|
| Type Merit | +1.58 | | Excellent |
| Mammary | +1.02 | | Excellent |
| Legs & Feet | +1.72 | | Excellent |
| Stature | -0.14 | | 160 cm |
| Chest Width | +0.50 | | Wide |
| Body Depth | -0.02 | | Deep |
| Angularity | +0.47 | | Open Rib |
| Rump Angle | +0.48 | | Low Pins |
| Rump Width | -0.82 | | Wide |
| Rear Leg Side | -0.59 | | Sickled |
| Foot Angle | +1.16 | | Steep |
| Fore Udder Att | +0.83 | | Tight |
| Rear Udder Ht | +0.43 | | Very High |
| Udder Support | -0.22 | | Strong |
| Udder Depth | +0.56 | | 20cm Above |
| Front Teat Pl. | +0.43 | | Close |
| Teat Length | -0.43 | | Long |
| Rear Teat Pl. | -0.05 | | Close |
| Teat Pos. Side | +0.11 | | Apart |
| Locomotion | +1.71 | | Excellent |
| Condition Score | +0.30 | | High |

-2 +2



PELEGRINO

Pellegrino BLF BYF CVF MFF



HB No 717253843259

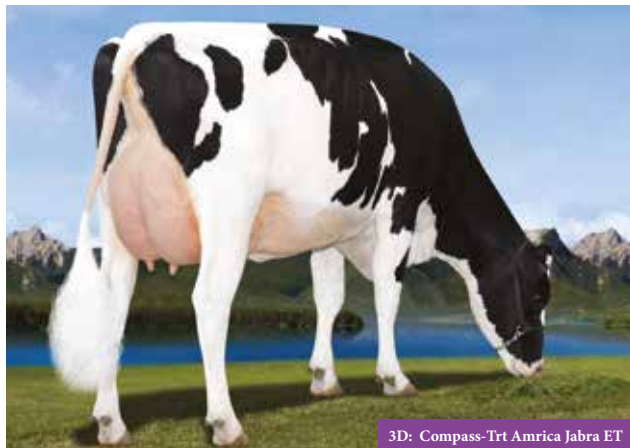
Beta Casein A1A1

Kappa Casein AB

AI Code H06761

Source France

DOB 30.10.19



3D: Compass-Trt Amrica Jabra ET

HOLSTEIN PRODUCTION

AHDB Dairy PTA 12/2022

Production Rel. 68% PLI Rel. 65%

PLI £735

Milk Kg +945

Fat Kg +35.7

Fat % -0.02

Protein Kg +30.5

Protein % -0.01

SCI £392 ACI £571 Rel. 65%

Genomic Young Sire Pedigree Index

✓ **Udders**

✓ **Production**

✓ **Healthy Cow Index**

✓ **Fertility Index**

✓ **Lifespan**

✓ **Lowers SCC**

SYNETICS

Topnotch X Router X Muscadet

| MANAGEMENT TRAITS | | 12/22 |
|-------------------|-------|-----------|
| HealthyCow Index | £285 | Improver |
| Enviro Cow Index | +3.0 | Improver |
| Fertility Index | +9.2 | Improver |
| Lifespan | +153 | Improver |
| Somatic Cell Ct | -25 | Improver |
| Mastitis | -2 | Improver |
| TB Advantage | +1.2 | Desirable |
| Lameness Index | +2.6 | Improver |
| Maintenance | +15 | Desirable |
| Calf Survival | +2.7 | Improver |
| Dir. Calving Ease | -0.5 | Easy |
| M. Calving Ease | +1.0 | Easy |
| Gestation Length | -3 | Shorter |
| Dig. Dermatitis | +0.3 | Improver |
| Dairy Carcase | +0.8 | Improver |
| Feed Advantage | -18 | Improver |
| Temperament | +1.59 | Good |
| Ease of Milk | -0.41 | Fast |

Below Average Average Above Average

HOLSTEIN CONFORMATION

Young Genomic Pedigree Index

HUK1 12/22

56% Reliability

| | | |
|-----------------|-------|------------|
| Type Merit | +1.27 | Excellent |
| Mammary | +2.08 | Excellent |
| Legs & Feet | +0.65 | Excellent |
| Stature | +1.29 | 160 cm |
| Chest Width | +0.69 | Wide |
| Body Depth | +0.39 | Deep |
| Angularity | +0.67 | Open Rib |
| Rump Angle | +0.53 | Low Pins |
| Rump Width | +1.12 | Wide |
| Rear Leg Side | -0.47 | Sickled |
| Foot Angle | -0.06 | Steep |
| Fore Udder Att | +1.74 | Tight |
| Rear Udder Ht | +2.07 | Very High |
| Udder Support | +1.40 | Strong |
| Udder Depth | +1.82 | 20cm Above |
| Front Teat Pl. | -0.32 | Close |
| Teat Length | -0.12 | Long |
| Rear Teat Pl. | +0.85 | Close |
| Teat Pos. Side | +0.69 | Apart |
| Locomotion | +0.25 | Excellent |
| Condition Score | +0.94 | High |

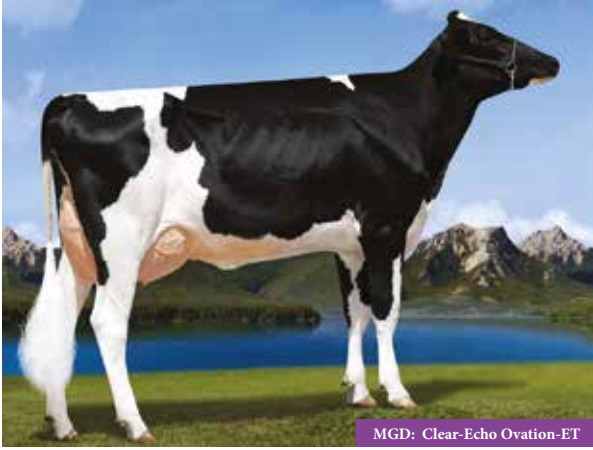
-2 +2

PLINKO

Peak AltaPlinko ET BLF CVF POF RDF CDF



HB No 65003200824505 AI Code HO6125
 Beta Casein A1A2 Source USA
 Kappa Casein AB DOB 17.10.18



MGD: Clear-Echo Ovation-ET

HOLSTEIN PRODUCTION

AHDB Dairy PTA 12/2022
 Production Rel. 68% PLI Rel. 65%

| | |
|-----------------------------------|--------------|
| PLI | £818 |
| Milk Kg | +1035 |
| Fat Kg | +48.3 |
| Fat % | +0.07 |
| Protein Kg | +41.8 |
| Protein % | +0.08 |
| SCI £508 ACI £635 Rel. 65% | |
| Genomic Young Sire Pedigree Index | |

✓ **Production**

✓ **Teat Length**

✓ **PLI**

✓ **Management Traits**

✓ **Lowers Stature**

✓ **Robotic**

Marius X AltaTopshot X Yoder

| MANAGEMENT TRAITS | | 12/22 |
|-------------------|-------|-----------|
| HealthyCow Index | £99 | Improver |
| Enviro Cow Index | +4.0 | Improver |
| Fertility Index | +4.8 | Improver |
| Lifespan | +52 | Improver |
| Somatic Cell Ct | -13 | Improver |
| Mastitis | +0 | Improver |
| TB Advantage | -0.3 | Desirable |
| Lameness Index | +2.1 | Improver |
| Maintenance | -8 | Desirable |
| Calf Survival | -1.0 | Improver |
| Dir. Calving Ease | +0.8 | Easy |
| M. Calving Ease | +1.0 | Easy |
| Gestation Length | -5 | Shorter |
| Dig. Dermatitis | +0.2 | Improver |
| Dairy Carcase | +1.3 | Improver |
| Feed Advantage | +150 | Improver |
| Temperament | +0.48 | Good |
| Ease of Milk | +0.15 | Fast |

Below Average Average Above Average

HOLSTEIN CONFORMATION

Young Genomic Pedigree Index HUKI 12/22 58% Reliability

| | | |
|-----------------|-------|------------|
| Type Merit | +0.17 | Excellent |
| Mammary | +0.04 | Excellent |
| Legs & Feet | +0.18 | Excellent |
| Stature | -0.20 | 160 cm |
| Chest Width | -0.75 | Wide |
| Body Depth | -0.88 | Deep |
| Angularity | +0.64 | Open Rib |
| Rump Angle | +0.99 | Low Pins |
| Rump Width | -0.07 | Wide |
| Rear Leg Side | +0.20 | Sickled |
| Foot Angle | -0.24 | Steep |
| Fore Udder Att | -0.30 | Tight |
| Rear Udder Ht | +0.28 | Very High |
| Udder Support | +0.00 | Strong |
| Udder Depth | -0.53 | 20cm Above |
| Front Teat Pl. | -0.93 | Close |
| Teat Length | +0.62 | Long |
| Rear Teat Pl. | -0.15 | Close |
| Teat Pos. Side | +0.67 | Apart |
| Locomotion | +0.15 | Excellent |
| Condition Score | -0.32 | High |

-2 +2

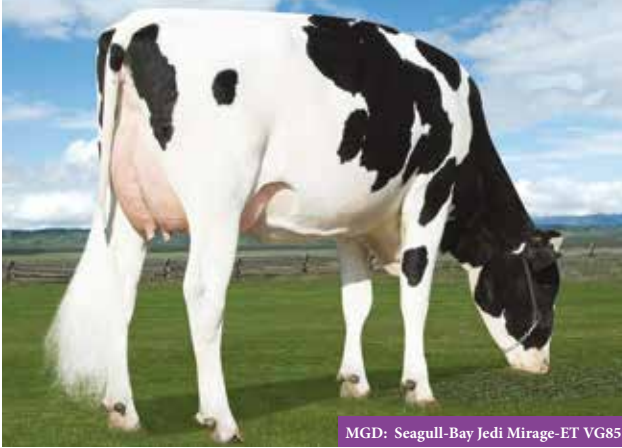


REGULUS

Winstar AltaRegulus ET BYF CVF POF RDF CDF



HB No 65003212150609 AI Code HO6888
 Beta Casein A2A2 Source USA
 Kappa Casein BB DOB 06.06.20



MGD: Seagull-Bay Jedi Mirage-ET VG85

HOLSTEIN PRODUCTION

AHDB Dairy PTA 12/2022
 Production Rel. 67% PLI Rel. 64%

| | |
|----------------------------|--------------|
| PLI | £795 |
| Milk Kg | +538 |
| Fat Kg | +52.2 |
| Fat % | +0.35 |
| Protein Kg | +29.6 |
| Protein % | +0.13 |
| SCI £519 ACI £653 Rel. 64% | |

Genomic Young Sire Pedigree Index

✓ **Components**

✓ **Rump Width**

✓ **High Percentage Fat**

✓ **PLI**

✓ **Udder Attachment**

✓ **Teat Length**



AltaZazzle X Crimson X Jedi

| MANAGEMENT TRAITS | | 12/22 |
|-------------------|-------|-----------|
| HealthyCow Index | £183 | Improver |
| Enviro Cow Index | +3.7 | Improver |
| Fertility Index | +5.9 | Improver |
| Lifespan | +107 | Improver |
| Somatic Cell Ct | -19 | Improver |
| Mastitis | -1 | Improver |
| TB Advantage | +0.5 | Desirable |
| Lameness Index | +2.6 | Improver |
| Maintenance | +7 | Desirable |
| Calf Survival | +1.8 | Improver |
| Dir. Calving Ease | -0.7 | Easy |
| M. Calving Ease | +1.4 | Easy |
| Gestation Length | -2 | Shorter |
| Dig. Dermatitis | +0.1 | Improver |
| Dairy Carcase | +1.5 | Improver |
| Feed Advantage | +55 | Improver |
| Temperament | +0.37 | Good |
| Ease of Milk | +0.74 | Fast |

Below Average Average Above Average

HOLSTEIN CONFORMATION

Young Genomic Pedigree Index

HUKI 12/22
 54% Reliability

| | | |
|-----------------|-------|------------|
| Type Merit | +0.46 | Excellent |
| Mammary | +1.09 | Excellent |
| Legs & Feet | -0.35 | Excellent |
| Stature | +0.47 | 160 cm |
| Chest Width | +0.52 | Wide |
| Body Depth | -0.25 | Deep |
| Angularity | +0.32 | Open Rib |
| Rump Angle | +0.59 | Low Pins |
| Rump Width | +0.71 | Wide |
| Rear Leg Side | -0.31 | Sickled |
| Foot Angle | +0.39 | Steep |
| Fore Udder Att | +0.98 | Tight |
| Rear Udder Ht | +0.33 | Very High |
| Udder Support | +0.13 | Strong |
| Udder Depth | +1.16 | 20cm Above |
| Front Teat Pl. | +0.77 | Close |
| Teat Length | -0.07 | Long |
| Rear Teat Pl. | +0.59 | Close |
| Teat Pos. Side | +0.39 | Apart |
| Locomotion | -0.48 | Excellent |
| Condition Score | +0.47 | High |

-2 +2

SAIKO

Saiko



HB No 65003235932953 AI Code

Beta Casein A1A2

Source USA

Kappa Casein AA

DOB

16.08.21



HOLSTEIN PRODUCTION

AHDB Dairy

PTA 12/2022

Production Rel. 67%

PLI Rel. 63%

PLI

£782

Milk Kg

+904

Fat Kg

+41.3

Fat %

+0.06

Protein Kg

+33.3

Protein %

+0.04

SCI £451 ACI £608 Rel. 63%

Saiko

Genomic Young Sire Pedigree Index

✓ **High Ranking PLI + TPI**

✓ **Calving Ease**

✓ **Production**

✓ **Ideal Rump Structure**

✓ **Daughter Fertility**

✓ **Strong Robust Cows**

SYNETICS

**Magnifique X Pursuit X
Medley**

| MANAGEMENT TRAITS | | 12/22 |
|-------------------|-------|-----------|
| Fertility Index | +8.9 | Improver |
| Lifespan | +146 | Improver |
| Somatic Cell Ct | -20 | Improver |
| Mastitis | -2 | Improver |
| TB Advantage | +1.4 | Desirable |
| Maintenance | +8 | Desirable |
| Dir. Calving Ease | +0.1 | Easy |
| M. Calving Ease | +1.1 | Easy |
| Temperament | +0.78 | Good |
| Ease of Milk | +0.12 | Fast |

Below Average Average Above Average

HOLSTEIN CONFORMATION

Young Genomic Pedigree Index

HUKI 12/22

53% Reliability

| | | |
|-----------------|-------|------------|
| Type Merit | +0.91 | Excellent |
| Mammary | +0.73 | Excellent |
| Legs & Feet | +0.65 | Excellent |
| Stature | +0.22 | 160 cm |
| Chest Width | +1.12 | Wide |
| Body Depth | +0.08 | Deep |
| Angularity | +0.35 | Open Rib |
| Rump Angle | +1.41 | Low Pins |
| Rump Width | +0.96 | Wide |
| Rear Leg Side | +0.19 | Sickled |
| Foot Angle | +0.23 | Steep |
| Fore Udder Att | +0.13 | Tight |
| Rear Udder Ht | +0.30 | Very High |
| Udder Support | +0.71 | Strong |
| Udder Depth | +0.16 | 20cm Above |
| Front Teat Pl. | +0.70 | Close |
| Teat Length | -0.27 | Long |
| Rear Teat Pl. | +1.35 | Close |
| Teat Pos. Side | +1.25 | Apart |
| Locomotion | +0.43 | Excellent |
| Condition Score | +1.04 | High |

-2

+2

SKOVLY P

VH Slatt Skovly P BLF BYF CVF POC CDF



HB No 6100000261780 AI Code HO7345
 Beta Casein A2A2 Source Denmark
 Kappa Casein BB DOB 27.05.20



HOLSTEIN PRODUCTION

AHDB Dairy PTA 12/2022
 Production Rel. 67% PLI Rel. 64%

PLI £790

Milk Kg +640

Fat Kg +39.0

Fat % +0.15

Protein Kg +32.3

Protein % +0.13

SCI £520 ACI £645 Rel. 64%

Skovly P

Genomic Young Sire Pedigree Index

✓ **Components**

✓ **Outcross Pedigree**

✓ **Healthy Cow Index**

✓ **Udders**

✓ **Fertility Index**

✓ **Teat Length**



Slatt P X Nerd RC X Balisto

| MANAGEMENT TRAITS | | 12/22 |
|-------------------|-------|-----------|
| HealthyCow Index | £234 | Improver |
| Enviro Cow Index | +3.2 | Improver |
| Fertility Index | +9.4 | Improver |
| Lifespan | +88 | Improver |
| Somatic Cell Ct | -16 | Improver |
| Mastitis | -2 | Improver |
| TB Advantage | +1.4 | Desirable |
| Lameness Index | +2.4 | Improver |
| Maintenance | +5 | Desirable |
| Calf Survival | +1.4 | Improver |
| Dir. Calving Ease | +0.4 | Easy |
| M. Calving Ease | +0.7 | Easy |
| Gestation Length | -1 | Shorter |
| Dig. Dermatitis | +0.5 | Improver |
| Dairy Carcase | +0.9 | Improver |
| Feed Advantage | +34 | Improver |
| Temperament | -0.04 | Good |
| Ease of Milk | +1.58 | Fast |

Below Average Average Above Average

HOLSTEIN CONFORMATION

Young Genomic Pedigree Index

HUKI 12/22

53% Reliability

| | | |
|-----------------|-------|------------|
| Type Merit | +1.36 | Excellent |
| Mammary | +1.43 | Excellent |
| Legs & Feet | +1.41 | Excellent |
| Stature | +0.86 | 160 cm |
| Chest Width | -0.21 | Wide |
| Body Depth | -0.13 | Deep |
| Angularity | +0.99 | Open Rib |
| Rump Angle | -0.62 | Low Pins |
| Rump Width | +1.06 | Wide |
| Rear Leg Side | -0.33 | Sickled |
| Foot Angle | +1.07 | Steep |
| Fore Udder Att | +1.13 | Tight |
| Rear Udder Ht | +1.46 | Very High |
| Udder Support | +0.57 | Strong |
| Udder Depth | +1.87 | 20cm Above |
| Front Teat Pl. | +0.54 | Close |
| Teat Length | +0.52 | Long |
| Rear Teat Pl. | +1.07 | Close |
| Teat Pos. Side | +0.83 | Apart |
| Locomotion | +0.90 | Excellent |
| Condition Score | +0.53 | High |

-2 +2



Peak AltaSolace ET

HOLSTEIN PRODUCTION

AHDB Dairy PTA 12/2022
 Production Rel. 67% PLI Rel. 64%

PLI **£844**

Milk Kg **+702**

Fat Kg **+41.8**

Fat % **+0.15**

Protein Kg **+31.7**

Protein % **+0.10**

SCI £560 ACI £707 Rel. 64%

Genomic Young Sire Pedigree Index

✔ *Suitable for Spring Calving* ✔ *Adds Slope to Rumps*

✔ *Components* ✔ *Calving Index*

✔ *Fertility Index* ✔ *Udders*

AltaPlinko X Crimson X Duke

| MANAGEMENT TRAITS | | 12/22 |
|-------------------|-------|-----------|
| HealthyCow Index | £290 | Improver |
| Enviro Cow Index | +3.5 | Improver |
| Fertility Index | +15.0 | Improver |
| Lifespan | +137 | Improver |
| Somatic Cell Ct | -29 | Improver |
| Mastitis | -3 | Improver |
| TB Advantage | +0.4 | Desirable |
| Lameness Index | +1.8 | Improver |
| Maintenance | +13 | Desirable |
| Calf Survival | +0.4 | Improver |
| Dir. Calving Ease | +0.1 | Easy |
| M. Calving Ease | +1.1 | Easy |
| Gestation Length | -2 | Shorter |
| Dig. Dermatitis | +0.0 | Improver |
| Dairy Carcase | +1.8 | Improver |
| Feed Advantage | +16 | Improver |
| Temperament | +0.33 | Good |
| Ease of Milk | -0.64 | Fast |

Below Average Average Above Average

HOLSTEIN CONFORMATION

Young Genomic Pedigree Index HUKI 12/22 54% Reliability

| | | |
|-----------------|-------|------------|
| Type Merit | +0.34 | Excellent |
| Mammary | +1.12 | Excellent |
| Legs & Feet | -0.26 | Excellent |
| Stature | +0.42 | 160 cm |
| Chest Width | +1.23 | Wide |
| Body Depth | -0.47 | Deep |
| Angularity | -0.73 | Open Rib |
| Rump Angle | +1.86 | Low Pins |
| Rump Width | +0.28 | Wide |
| Rear Leg Side | -1.17 | Sickled |
| Foot Angle | +0.47 | Steep |
| Fore Udder Att | +1.01 | Tight |
| Rear Udder Ht | +0.04 | Very High |
| Udder Support | +0.96 | Strong |
| Udder Depth | +1.17 | 20cm Above |
| Front Teat Pl. | +0.36 | Close |
| Teat Length | -0.39 | Long |
| Rear Teat Pl. | +1.58 | Close |
| Teat Pos. Side | +0.47 | Apart |
| Locomotion | -0.17 | Excellent |
| Condition Score | +1.75 | High |

-2 +2



SOLDADO

Soldado and Cows



HB No 71004445551044 AI Code HO7484
 Beta Casein A2A2 Source France
 Kappa Casein AB DOB 05.05.21



HOLSTEIN PRODUCTION

AHDB Dairy PTA 12/2022
 Production Rel. 65% PLI Rel. 62%

PLI £734

Milk Kg +867

Fat Kg +41.7

Fat % +0.08

Protein Kg +36.2

Protein % +0.08

SCI £406 ACI £545 Rel. 62%

Dam: Poker

Genomic Young Sire Pedigree Index

✓ **Components**

✓ **Outcross Pedigree**

✓ **Production**

✓ **Rump Width**

✓ **Udders**

✓ **Robotic**

Poulidor X Jazz X Benwood P

| MANAGEMENT TRAITS | | 12/22 |
|-------------------|-------|-----------|
| HealthyCow Index | £161 | Improver |
| Enviro Cow Index | +3.2 | Improver |
| Fertility Index | +5.6 | Improver |
| Lifespan | +76 | Improver |
| Somatic Cell Ct | -18 | Improver |
| Mastitis | -2 | Improver |
| TB Advantage | +1.3 | Desirable |
| Lameness Index | +1.5 | Improver |
| Maintenance | +18 | Desirable |
| Calf Survival | -0.3 | Improver |
| Dir. Calving Ease | -0.1 | Easy |
| M. Calving Ease | +0.9 | Easy |
| Gestation Length | +0 | Shorter |
| Dig. Dermatitis | +0.1 | Improver |
| Dairy Carcase | +0.3 | Improver |
| Feed Advantage | +6 | Improver |
| Temperament | +0.69 | Good |
| Ease of Milk | -0.71 | Fast |

Below Average Average Above Average

SYNETICS

| HOLSTEIN CONFORMATION | | HUKI 12/22 |
|------------------------------|-------|-----------------|
| Young Genomic Pedigree Index | | 51% Reliability |
| Type Merit | +0.92 | Excellent |
| Mammary | +1.60 | Excellent |
| Legs & Feet | +0.33 | Excellent |
| Stature | +1.43 | 160 cm |
| Chest Width | +0.98 | Wide |
| Body Depth | +0.16 | Deep |
| Angularity | +0.91 | Open Rib |
| Rump Angle | +0.45 | Low Pins |
| Rump Width | +1.68 | Wide |
| Rear Leg Side | -0.34 | Sickled |
| Foot Angle | +1.35 | Steep |
| Fore Udder Att | +1.69 | Tight |
| Rear Udder Ht | +1.58 | Very High |
| Udder Support | +0.33 | Strong |
| Udder Depth | +1.51 | 20cm Above |
| Front Teat Pl. | -0.67 | Close |
| Teat Length | +0.36 | Long |
| Rear Teat Pl. | -0.40 | Close |
| Teat Pos. Side | -0.01 | Apart |
| Locomotion | +0.14 | Excellent |
| Condition Score | +0.54 | High |

-2 +2



HOLSTEIN PRODUCTION

AHDB Dairy PTA 12/2022
 Production Rel. 67% PLI Rel. 63%

| | |
|-----------------------------------|--------------|
| PLI | £779 |
| Milk Kg | +676 |
| Fat Kg | +47.0 |
| Fat % | +0.22 |
| Protein Kg | +32.8 |
| Protein % | +0.12 |
| SCI £497 ACI £618 Rel. 63% | |
| Genomic Young Sire Pedigree Index | |

✓ **Excellent Sire Stack**

✓ **Impressive Udders**

✓ **+80 Kg Fat + Protein**

✓ **Calving Ease**

✓ **Improves Teat Length**

✓ **Improves Locomotion**

SYNETICS

Plinko X Pursuit X Hotline

| MANAGEMENT TRAITS | | 12/22 |
|-------------------|-------|-----------|
| Fertility Index | +6.5 | Improver |
| Lifespan | +79 | Improver |
| Somatic Cell Ct | -9 | Improver |
| Mastitis | -1 | Improver |
| TB Advantage | +1.1 | Desirable |
| Maintenance | +2 | Desirable |
| Dir. Calving Ease | +0.3 | Easy |
| M. Calving Ease | +1.2 | Easy |
| Temperament | +0.23 | Good |
| Ease of Milk | +1.45 | Fast |

Below Average Average Above Average

HOLSTEIN CONFORMATION

Young Genomic Pedigree Index HUK1 12/22

| HOLSTEIN CONFORMATION | | 53% Reliability |
|-----------------------|-------|-----------------|
| Type Merit | +1.06 | Excellent |
| Mammary | +0.92 | Excellent |
| Legs & Feet | +0.69 | Excellent |
| Stature | +0.40 | 160 cm |
| Chest Width | +0.03 | Wide |
| Body Depth | +0.35 | Deep |
| Angularity | +1.28 | Open Rib |
| Rump Angle | -0.64 | Low Pins |
| Rump Width | +0.59 | Wide |
| Rear Leg Side | +1.13 | Sickled |
| Foot Angle | -0.04 | Steep |
| Fore Udder Att | +0.42 | Tight |
| Rear Udder Ht | +0.83 | Very High |
| Udder Support | +1.10 | Strong |
| Udder Depth | -0.20 | 20cm Above |
| Front Teat Pl. | +0.18 | Close |
| Teat Length | +1.27 | Long |
| Rear Teat Pl. | +0.65 | Close |
| Teat Pos. Side | +1.27 | Apart |
| Locomotion | +0.64 | Excellent |
| Condition Score | -0.28 | High |

TRY

Trent-Way-JS AltaTry Red ET BLF BYF CVF POF CDF



HB No 65003213815980 AI Code HO7215
 Beta Casein A1A1 Source USA
 Kappa Casein BB DOB 17.06.20



Trent-Way-JS AltaTry Red ET

HOLSTEIN PRODUCTION

AHDB Dairy PTA 12/2022
 Production Rel. 67% PLI Rel. 64%

| | |
|-----------------------------------|--------------|
| PLI | £561 |
| Milk Kg | +660 |
| Fat Kg | +32.6 |
| Fat % | +0.07 |
| Protein Kg | +30.4 |
| Protein % | +0.10 |
| SCI £297 ACI £413 Rel. 64% | |
| Genomic Young Sire Pedigree Index | |

✓ **Udders**

✓ **Production**

✓ **Type**

✓ **Milking Speed**

✓ **Strength**

✓ **Outcross Pedigree**



Tomcruise X Royal X Silver

| MANAGEMENT TRAITS | | 12/22 |
|-------------------|-------|-----------|
| HealthyCow Index | £86 | Improver |
| Enviro Cow Index | +2.4 | Improver |
| Fertility Index | +1.6 | Improver |
| Lifespan | +34 | Improver |
| Somatic Cell Ct | -9 | Improver |
| Mastitis | +0 | Improver |
| TB Advantage | +0.2 | Desirable |
| Lameness Index | +1.5 | Improver |
| Maintenance | +13 | Desirable |
| Calf Survival | +0.6 | Improver |
| Dir. Calving Ease | -1.1 | Easy |
| M. Calving Ease | +0.3 | Easy |
| Gestation Length | -1 | Shorter |
| Dig. Dermatitis | +0.4 | Improver |
| Dairy Carcase | +0.5 | Improver |
| Feed Advantage | -3 | Improver |
| Temperament | +0.71 | Good |
| Ease of Milk | +1.70 | Fast |

Below Average Average Above Average

HOLSTEIN CONFORMATION

Young Genomic Pedigree Index HUKI 12/22 54% Reliability

| | | |
|-----------------|-------|-----------|
| Type Merit | +1.43 | Excellent |
| Mammary | +1.92 | Excellent |
| Legs & Feet | +0.56 | Excellent |
| Stature | +0.99 | 160 cm |
| Chest Width | +0.97 | Wide |
| Body Depth | +1.00 | Deep |
| Angularity | +1.07 | Open Rib |
| Rump Angle | -0.41 | Low Pins |
| Rump Width | +0.99 | Wide |
| Rear Leg Side | -1.32 | Sickled |
| Foot Angle | +0.74 | Steep |
| Fore Udder Att | +1.70 | Tight |
| Rear Udder Ht | +1.88 | Very High |
| Udder Support | +1.21 | Strong |
| Udder Depth | +0.98 | 20cm Abve |
| Front Teat Pl. | +1.12 | Close |
| Teat Length | -0.84 | Long |
| Rear Teat Pl. | +1.26 | Close |
| Teat Pos. Side | +1.17 | Apart |
| Locomotion | +0.56 | Excellent |
| Condition Score | +0.43 | High |

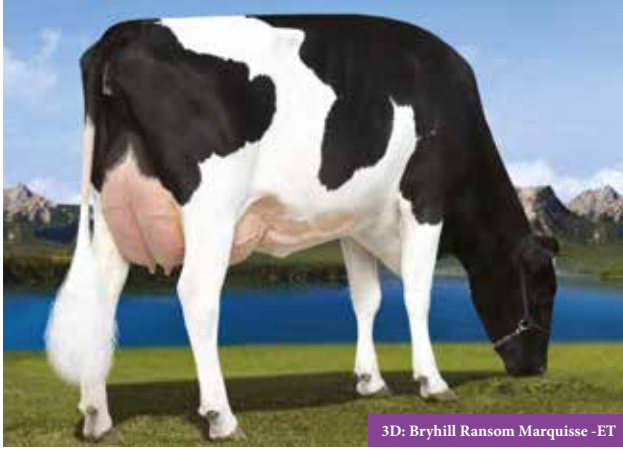
-2 +2

WHEELHOUSE

Peak Wheelhouse ET BLF BYF CVF RDF CDF



HB No 65003209641362 AI Code HO6603
 Beta Casein A2A2 Source USA
 Kappa Casein AB DOB 09.02.19



3D: Bryhill Ransom Marquise -ET

HOLSTEIN PRODUCTION

AHDB Dairy PTA 12/2022
 Production Rel. 68% PLI Rel. 65%

| | |
|--|--------------|
| PLI | £687 |
| Milk Kg | +676 |
| Fat Kg | +40.4 |
| Fat % | +0.15 |
| Protein Kg | +28.0 |
| Protein % | +0.06 |
| SCI £387 ACI £535 Rel. 65% | |
| <i>Genomic Young Sire Pedigree Index</i> | |

✓ **Power and Strength**

✓ **Daughter Fertility**

✓ **Production**

✓ **Rumps**

✓ **Sire of Sons**

✓ **Calving Ease**



Pursuit X Duke X Rubicon

| MANAGEMENT TRAITS | | 12/22 |
|-------------------|-------|-----------|
| HealthyCow Index | £196 | Improver |
| Enviro Cow Index | +3.2 | Improver |
| Fertility Index | +6.0 | Improver |
| Lifespan | +134 | Improver |
| Somatic Cell Ct | -13 | Improver |
| Mastitis | -1 | Improver |
| TB Advantage | +2.5 | Desirable |
| Lameness Index | +1.9 | Improver |
| Maintenance | +15 | Desirable |
| Calf Survival | +1.3 | Improver |
| Dir. Calving Ease | +0.2 | Easy |
| M. Calving Ease | +1.3 | Easy |
| Gestation Length | +0 | Shorter |
| Dig. Dermatitis | +0.0 | Improver |
| Dairy Carcase | +1.1 | Improver |
| Feed Advantage | +16 | Improver |
| Temperament | +0.49 | Good |
| Ease of Milk | +0.63 | Fast |

Below Average Average Above Average

HOLSTEIN CONFORMATION

Young Genomic Pedigree Index

HUKI 12/22
58% Reliability

| | | |
|-----------------|-------|------------|
| Type Merit | +1.45 | Excellent |
| Mammary | +1.24 | Excellent |
| Legs & Feet | +0.63 | Excellent |
| Stature | +0.45 | 160 cm |
| Chest Width | +2.01 | Wide |
| Body Depth | +0.89 | Deep |
| Angularity | +1.04 | Open Rib |
| Rump Angle | +1.70 | Low Pins |
| Rump Width | +2.20 | Wide |
| Rear Leg Side | +0.16 | Sickled |
| Foot Angle | +0.18 | Steep |
| Fore Udder Att | +0.58 | Tight |
| Rear Udder Ht | +0.94 | Very High |
| Udder Support | +0.96 | Strong |
| Udder Depth | +0.17 | 20cm Above |
| Front Teat Pl. | +1.70 | Close |
| Teat Length | -1.20 | Long |
| Rear Teat Pl. | +1.47 | Close |
| Teat Pos. Side | +0.73 | Apart |
| Locomotion | +0.54 | Excellent |
| Condition Score | +0.48 | High |

-2 +2

Beef Sires for the Dairy Herd

GRENADE

- Exceptional Growth Rates
- EBVs suggest improvement in Muscle Development
- Use on cows until detailed calving survey completed

ABERDEEN ANGUS

HW Grenade

HB No: UK546977102535

DOB: 01.03.19

CALVING SURVEY

| | |
|-------------------|-----|
| Surveys | 53 |
| Surgical Vet Asst | 3.8 |
| Non-Surg Vet Asst | 0.0 |
| Gest Length Days | 286 |



HIGHWAY

- Excellent Terminal and Maternal Indexes
- Use on cows until detailed calving survey completed

ABERDEEN ANGUS

Drumhill Lord Highway V271

HB No: UK959342703271

DOB: 24.04.19

A ANGUS EBVs 02/23

| | |
|----------------------|------|
| Calving Ease Dir % | -1.3 |
| Birth Wt Kgs | +4.3 |
| Terminal Index | +44 |
| Self-Replacing Index | +53 |



KAYO

- Above Average Growth and Muscling
- Smooth fleshing sire
- Early calving information suggests Calving Ease

ABERDEEN ANGUS

Glenbrae Red Mr Kayo W825

HB No: UK939290404825

DOB: 15.04.2020

CALVING SURVEY

| | |
|-------------------|-----|
| Surveys | 12 |
| Surgical Vet Asst | 0.0 |
| Non-Surg Vet Asst | 0.0 |
| Gest Length Days | 283 |



LUXURY

- Excellent figures for Carcass Weight
- Superb muscling throughout
- First calves are normal calving and display good colour marking

IRISH BLUE

Boraside Luxury ET

HB No: IE372215083231556

DOB: 15.09.17

CALVING SURVEY

| | |
|-------------------|-----|
| Surveys | 57 |
| Surgical Vet Asst | 1.8 |
| Non-Surg Vet Asst | 0.0 |
| Gest Length Days | 285 |



RAMBO

- Outstanding muscling and hindquarter development
- Bred from a proven easy calving line
- Use on cows until detailed calving survey completed

BRITISH BLUE

Springhill Rambo

HB No: UK933293500883

DOB: 01.03.21

British Blue EBVs 02/23

| | |
|---------------------|------|
| Calving Ease Dir % | -0.5 |
| Birth Wt Kgs | +2.9 |
| Profitability Index | +9 |
| Ped. Breeding Index | +2 |



JUBILANT

- Calving Ease sire
- Excellent colour marking
- Recommended on Holstein cows

BRITISH BLUE

Knockagh Jubilant

HB No: B-20141285

DOB: 04.12.14

CALVING SURVEY

| | |
|-------------------|-----|
| Surveys | 69 |
| Surgical Vet Asst | 0.0 |
| Non-Surg Vet Asst | 0.0 |
| Gest Length Days | 284 |



Beef Sires for the Dairy Herd

SILAS

- Top Performance Sire
- Style and Quality
- High Growth Rates
- Use on cows until detailed calving survey completed

HEREFORD

Graceland 1 Silas

HB No: UK924024809644

DOB: 15.06.19

HEREFORD EBVs 02/23

Calving Ease Dir % -1.7

Birth Wt Kgs +4.5

Terminal Index +37

Self-Replacing Index +44



LACKEY BOY

- High farmer satisfaction
- Excellent crossing sire
- Recommended for crossing on Holstein cows

HEREFORD

Lisrace Lackey Boy 11th

HB No: UK948192712133

DOB: 14.04.17

CALVING SURVEY

Surveys 213

Surgical Vet Asst 0.5

Non-Surg Vet Asst 0.9

Gest Length Days 285



NEYMAR

- Neymar is an excellent example of the Limousin breed
- Excels in calf conformation
- Recommended for crossing on Holstein cows

LIMOUSIN

Claragh Neymar

HB No: RJT17-4041

DOB: 22.08.17

CALVING SURVEY

Surveys 154

Surgical Vet Asst 3.3

Non-Surg Vet Asst 2.6

Gest Length Days 290



PARNASSUS

- Parnassus is a very stylish young bull with great potential
- Northern Irish Herds Competition Young Bull of the Year 2021
- Use on cows until calving survey completed

BEEF SHORTHORN

Craigfaddock Parnassus (P)

HB No: 673804292

DOB: 06.09.20

B SHORTHORN EBVs 02/23

Calving Ease Dir % -0.4

Birth Wt Kgs +2.0

Terminal Index +39

Self-Replacing Index +43



HUGO

- Hugo is one of the finest examples of the breed
- Natural muscling with excellent fleshing ability
- Use on cows until calving survey completed

SPECKLE PARK

Ballylough Hugo

HB No: UK9151176931455

DOB: 26.10.20

ICBF EUROSTAR RANKING 02/23

Dairy Beef Index ★★★★★

Heifer Calving Diff ★★★★★

Cow Calving Diff ★★★★★

Gest Length Days ★★★★★



GRISY

- Tremendous Muscling Ability
- Above Average Growth
- High Carcass Value
- Average Calving Ease
- Excellent Conformation

CHAROLAIS CULARD

Grisy

HB No: FR6950643724

DOB: 30.07.11

French Performance Data

Calving Ease 104

Early Muscularity 113

Carcass Conformation 112

Total Beef Merit 111



Fertility Boost

AI Services offers a selection of mixed beef semen. Mixed semen of this nature has been shown to significantly improve conception rates.

Available Fertility Boost Mixtures

| | Sire 1 | Sire 2 | Sire 3 |
|----------------------------------|------------------------------|-------------------------|---------------------------|
| Triple Mix British Blue | <i>Chatham Olaf</i> | <i>Boroside Luxury</i> | <i>Knockagh Jubilant</i> |
| Triple Mix Aberdeen Angus | <i>Drumhill Lord Highway</i> | <i>Woodvale Network</i> | <i>HW Grenade</i> |
| AA x AA x HER | <i>Rawburn Jumbo Eric</i> | <i>Thrunton Rocket</i> | <i>Brookfield 1 Romeo</i> |
| AA x AA x HER | <i>HW Grenade</i> | <i>Woodvale Network</i> | <i>Graceland 1 Silas</i> |
| AA x BB x HER | <i>HW Grenade</i> | <i>Chatham Olaf</i> | <i>Graceland 1 Silas</i> |
| AA x LIM x SIM | <i>Rawburn Jumbo Eric</i> | <i>Carmorn Marty</i> | <i>Omorga Isaac</i> |



Individual sires may change in the mixtures from time to time. Additional Mixes are available by request.



CALF'S CHOICE TOTAL® 100

- ◆ **Whole Bovine Colostrum** - not skimmed or reconstructed from components.
- ◆ **High in Colostral Fat** - important energy source required by calves immediately after birth.
- ◆ **Safe and Effective** - free of disease-causing organisms, tested for safety and efficacy.
- ◆ **Convenient** - Easily mixes in under 15 seconds. 3-year shelf life.
- ◆ **For use with:** calves, lambs and goat kids.
- ◆ **GMP+ FSA Assured** 



RumiLife™ CAL24™ Nutritional Supplement

THREE REASONS TO CHOOSE CAL24

IT'S SIMPLE.

SAVE TIME AND LABOR

give two boluses
right after calving

No need for a second
bolus 12 hours later



IT'S UNIQUE.

TWO FORMS OF READILY AVAILABLE CALCIUM

plus magnesium
& vitamin D

allow for optimal
calcium absorption



IT'S COMPLETE.

PROVIDES IMMEDIATE AND SUSTAINED RELEASE CALCIUM

CALCIUM CHLORIDE acts rapidly for immediate
absorption in the rumen

CALMIN regulates absorption over time as a
combination of highly-absorbable calcium &
magnesium

VITAMIN D helps facilitate
active, sustained calcium
transfer beyond the rumen



Ai SERVICES
- NORTHERN IRELAND -

For further information, contact your local Breeding Specialist.

At Your Service . . .

| | | |
|---------------------------------------|----------------------|---|
| Headquarters and Stud Facility | Ballycraigy | 028 9083 3123 |
| Breeding Information | Ivan Minford | 078 3118 9852 028 9083 3123 iminford@ai-services.co.uk |
| | Michelle Hill | 028 9083 3123 mhill@ai-services.co.uk |

BREEDING SPECIALISTS

| | | |
|-----------------------------|-----------------------|----------------------|
| ANTRIM / LONDONDERRY | Ben Mallon | 078 8444 3899 |
| | Ivan Minford | 078 3118 9852 |
| | Gary Henderson | 079 8934 6226 |
| DOWN | James Compston | 079 7660 5701 |
| FERMANAGH / TYRONE | John Sproule | 077 7816 9263 |
| ARMAGH / TYRONE | Nigel Spence | 078 0927 4141 |
| EMBRYO TRANSFER | David McCall | 077 7880 5357 |
| STUD MANAGER | Robin Boyd | 077 9934 6784 |
| DIY TRAINING | Ballycraigy | 028 9083 3123 |



Ai SERVICES
- NORTHERN IRELAND -

**Ballycraigy 671 Antrim Road Newtownabbey
Co Antrim BT36 4RL Tel: 028 9083 3123**

Web: www.ai-services.co.uk

Email: info@ai-services.co.uk

**To Book a Service Call or
Pregnancy Scan, Telephone:**

028 9083 3123

Whilst every effort has been made to ensure the accuracy of all information contained in this catalogue, AI Services (NI) Ltd. accepts no responsibility whatsoever for any error, and without prejudice do not accept any liability for loss which may result from any error.

AI Services is the supplier / seller of semen and does not carry any responsibility or liability to the buyer in respect of loss arising from performance or fertility issues, or any other matters which are outside of the direct control of AI Services. The purchase of semen does not guarantee fertility or conception.

AI Services abides by the AHDB Dairy and Holstein UK established Code of Advertising.