

Dairy Breeds Catalogue 2023



*The Building
Blocks to
Long Term
Profitability*



Ai SERVICES
- NORTHERN IRELAND -

FRIESIAN

Firoda Bill 3	3
Google 3	4

HOLSTEIN FRIESIAN

Lad	5
Magnifico	6
Phoenix	7
Victor	8
Wonder	9

DANISH RED

Farnam	10
Froerup	11
Triad	12
Uppera	13
Vilpiri	14
Vimo	15

AYRSHIRE

Virkild	16
---------	----

MONTBELLARDE

Ilanne	17
Neutrino	18
Omalet	19
Pactole	20
Hokuspokus	21
Manaus	22
Virginia	23

FLECKVIEH

Jojo	24
Kjolby	25

NORMANDE

Razzia	26
Ronaldinho	27

BROWN SWISS

O'Malley	28
----------	----

DAIRY SHORTHORN

Solomon	29
---------	----

Welcome to our new Dairy Breeds Directory for 2023.

AI Services has scoured the marketplace to source sires of the highest calibre to complement Northern Irish herds, using health, longevity and components as top priorities for bull selection. Pedigree and crossbreeders will find a wide selection of sires to suit your breeding requirements.

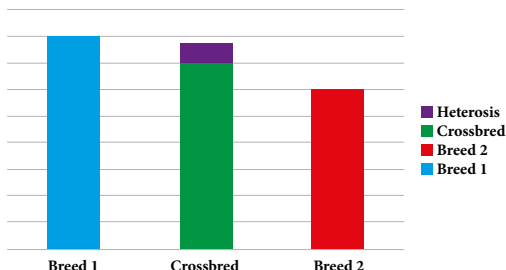
As the demand for crossbreeding grows, below please find some guidance notes from the Agriculture and Horticulture Development Board (AHDB).

Dairy Genetic Crossbreeding

Crossbreeding is the deliberate mating of animals from different breeds or strains designed to take advantage of Heterosis (Hybrid Vigour) for characteristics like production, fertility and longevity.

Heterosis/Hybrid Vigour is the tendency of a crossbred animal to have qualities superior to that of either parent but not more than the dominant breed.

The graph shows how heterosis can be applied to all health or production traits if there is sufficient genetic difference between the two chosen breeds.



If Breed 1 was crossed with Breed 2 the green area of the crossbred would be the logical average animal produced by the two breeds. The purple area on top of this is the added benefit or heterosis effect. The heterosis effect is variable between breeds and also the traits affected.

Trial work has shown the main benefit of heterosis is seen in fitness and health traits. 10% to 18% heterosis has been recorded in trials carried out in California and New Zealand in a wide variety of crossbred cows including Swedish/Norwegian Reds (SRB), Brown Swiss, Jerseys, and Montbelliarde. Milk production has been recorded as improving up to 6% but it is important to remember this is not the only measure of profitability.

To gain and maintain the effects of heterosis, breed and bull selection is paramount. To maximise the benefits farmers need to plan the direction they want their business to take in the long term to ensure crossbreeding is the right path for them.

Although working a four way cross system provides maximum gain from heterosis, it is widely recommended a three way cross is more sustainable. Using a four way cross is:

- Difficult to implement
- Choosing four suitable breeds can be a problem
- Breed qualities are watered down with each cross

2 Way Cross	67%
3 Way Cross	85%
4 Way Cross	94%

Heterosis should not be used as the main reason to crossbreed but as an added bonus. It is important to remember that crossbreeding is about herd improvement not breed improvement.

Whilst every effort has been made to ensure the accuracy of all information contained in this catalogue, AI Services (NI) Ltd. accepts no responsibility whatsoever for any error, and without prejudice do not accept any liability for loss which may result from any error.

AI Services is the supplier / seller of semen and does not carry any responsibility or liability to the buyer in respect of loss arising from performance or fertility issues, or any other matters which are outside of the direct control of AI Services. The purchase of semen does not guarantee fertility or conception.

AI Services abides by the AHDB Dairy and Holstein UK established Code of Advertising.

BILL 3

Firoda Bill 3



HB No 46 141518921049 AI Code BF1245
 97% Friesian , 3% Holstein Source Ireland
 DOB 24.02.20



UK FRIESIAN CONVERTED PRODUCTION PROOF

AHDB Dairy PTA August 2022
 Production Rel. 60% Genomic

PLI	£108
Milk Kg	+337
Fat Kg	+21.4
Fat %	+0.09
Protein Kg	+20.2
Protein %	+0.12



Exceptional Bull from the Firoda Judie line

Beautiful Strong British Friesian Type

Plus for Milk with Exceptional Solids

IRISH PRODUCTION

ICBF August 2022
 Production Rel. 75%

Milk Kg	+78
Fat Kg	+10.0
Fat %	+0.13
Protein Kg	+9.0
Protein %	+0.10
EBI	€218
Milk SI	€65
Fertility SI	€143
Calving SI	€19
Beef SI	-€14
Maintenance SI	€7
Management SI	€6
Health SI	-€8

Genomic Young Sire

Pedigree

Sire	Firoda Jubilaris 11				
Dam	Firoda PZI Judie VG87				
Dam Yields	Milk Kgs	Fat Kgs	Ptn Kgs	Fat%	Ptn %
5 Lact Avg	8004	327	297	4.09	3.70
3rd Lact	8565	349	324	4.08	3.78
MGS	Piet Adema 186				
MGD	Firoda DVT Judie VG88				
4 Lact Avg	719	271	263	3.81	3.68
4th Lact	8151	307	308	3.76	3.78
3rd Dam	Firoda DDY Judie VG89				
8 Lact Avg	7804	280	269	3.58	3.45



UK FRIESIAN CONVERTED PRODUCTION PROOF

AHDB Dairy PTA August 2022
Production Rel. 60% Genomic

PLI	£201
Milk Kg	+179
Fat Kg	+19.2
Fat %	+0.15
Protein Kg	+15.6
Protein %	+0.14



Double Digit Fat and Protein Percentages

+1.71 Locomotion

Positive for Teat Length

IRISH PRODUCTION

ICBF August 2022
Production Rel. 75%

Milk Kg	-30
Fat Kg	+8.0
Fat %	+0.17
Protein Kg	+5.0
Protein %	+0.10
EBI	€210
Milk SI	€48
Fertility SI	€104
Calving SI	€52
Beef SI	-€15
Maintenance SI	€18
Management SI	€2
Health SI	€2

Genomic Young Sire

Pedigree

Sire	Manorpark Google				
Dam	Barrowvale Dheaty 76 GP83				
Dam Yields	Milk Kgs	Fat Kgs	Ptn Kgs	Fat%	Ptn %
3 Lact Av	7278	310	268	4.27	3.67
2nd Lact	7828	325	299	4.15	3.67
MGS	Catlane Chad				
MGD	Barrowvale Dheaty 62 EX91 2E x JRB				
5 Lact Avg	7345	357	283	4.93	3.89
4th Lact	8125	408	316	5.03	3.89
3rd Dam	Barrowvale Dheaty 56 VG88 x VML				
2 Lact Avg	6110	264	226	4.32	3.70



Dam: Rochemount HDJ Marion 2830



**UK HOLSTEIN CONVERTED
PRODUCTION PROOF**

AHDB Dairy PTA August 2022
Production Rel. 62%

SCI	£307
ACI	£322
Milk Kg	-4
Fat Kg	+12.8
Fat %	+0.26
Protein Kg	+12.1
Protein %	+0.24
Young Genomic Pedigree Index	

**Exceptionally High Milk
Solids**

Short Gestation Length

Outcross Pedigree

IRISH PRODUCTION

ICBF August 2022
Production Rel. 78%

Milk Kg	+42
Fat Kg	+17.0
Fat %	+0.27
Protein Kg	+14.0
Protein %	+0.23
EBI	€316
Milk SI	€118
Fertility SI	€153
Calving SI	€48
Beef SI	-€15
Maintenance SI	€7
Management SI	€1
Health SI	€6
Genomic Young Sire	

Pedigree

Sire	Rossbane Niall				
Dam	Rochemount HDJ Marion 2830				
Dam Yields	Milk Kgs	Fat Kgs	Ptn Kgs	Fat%	Ptn %
3 Lact Av	6632	299	254	4.50	3.82
3rd Lact	7512	348	287	4.63	3.82
MGS	Bridestream Harold				
MGD	Rochemount PSZ Marion 2535 GP82				
6 Lact Avg	6060	289	230	4.79	3.81
5th Lact	6825	317	264	4.64	3.86
3rd Dam	Rochemount WUH Marion 1919				
8 Lact Avg	7678	295	265	4.28	3.45

MAGNIFICO

Hanrahan Magnifico

HB No 46 213675211055 AI Code HO6605
88% Holstein, 12% Friesian Source Ireland
DOB 07.02.20



HOLSTEIN PRODUCTION

AHDB Dairy PTA August 2022
Production Rel. 66% SCI/ACI Rel. 63%

SCI	£408
ACI	£435
Milk Kg	-98
Fat Kg	+15.8
Fat %	+0.40
Protein Kg	+9.2
Protein %	+0.25
Young Genomic Pedigree Index	



Dam EX90 Mammary 4th Calver

Strong Functional Cows

Positive Solids Kgs and Percentages

IRISH PRODUCTION

ICBF August 2022
Production Rel. 78%

Milk Kg	+133
Fat Kg	+25.0
Fat %	+0.33
Protein Kg	+13.0
Protein %	+0.15
EBI	€322
Milk SI	€118
Fertility SI	€120
Calving SI	€64
Beef SI	-€12
Maintenance SI	€8
Management SI	€5
Health SI	€19
Genomic Young Sire	

Pedigree

Sire	Kifeacle Pivotal				
Dam	Hanrahan S2304 Maureen VG89				
Dam Yields	Milk Kgs	Fat Kgs	Ptn Kgs	Fat%	Ptn %
4 Lact Av	7715	353	286	4.60	3.72
3rd Lact	8926	398	329	4.46	3.69
MGS	Interstice				
MGD	Hanrahan DDG Maureen EX90				
5 Lact Avg	7180	301	245	4.24	3.42
4th Lact	8751	350	299	4.00	3.42
3rd Dam	Hanrahan Uphill Maureen X UPH				
5 Lact Avg	6486	203	240	3.12	3.70

PHOENIX

Olcastletown Phoenix 1849

HB No 46 218577531849 AI Code HO6617
 94% Holstein, 6% Friesian Source Ireland
 DOB 26.01.18



Dam: Olcastletown Apple Phoinex VG89



Dam and Grand Dam are both 4% Protein Cows

Longevity

Milk + Conformation

UK HOLSTEIN CONVERTED PRODUCTION PROOF

AHDB Dairy PTA August 2022

Production Rel. 62%

SCI	£233
ACI	£237
Milk Kg	+26
Fat Kg	+17.0
Fat %	+0.31
Protein Kg	+9.6
Protein %	+0.17

Young Genomic Pedigree Index

IRISH PRODUCTION

ICBF August 2022

Production Rel. 78%

Milk Kg	+70
Fat Kg	+22.0
Fat %	+0.33
Protein Kg	+11.0
Protein %	+0.15
EBI	€267
Milk SI	€103
Fertility SI	€135
Calving SI	€27
Beef SI	-€9
Maintenance SI	€6
Management SI	-€1
Health SI	€6

Genomic Young Sire

Pedigree

Sire	Gortreen Sebastain				
Dam	Olcastletown Apple Phoinex VG89				
Dam Yields	Milk Kgs	Fat Kgs	Ptn Kgs	Fat%	Ptn %
6 Lact Av	7370	324	287	4.81	3.89
6th Lact	8079	412	319	5.10	3.95
MGS	Gran-J Oman Mccormick				
MGD	Olcastletown Keet Phoinex VG86				
8 Lact Avg	6450	308	254	4.78	3.95
6th Lact	7557	354	303	4.68	4.01
3rd Dam	Olcastletown RUU Phoinex				
6 Lact Avg	6109	255	218	4.17	3.56

VICTOR

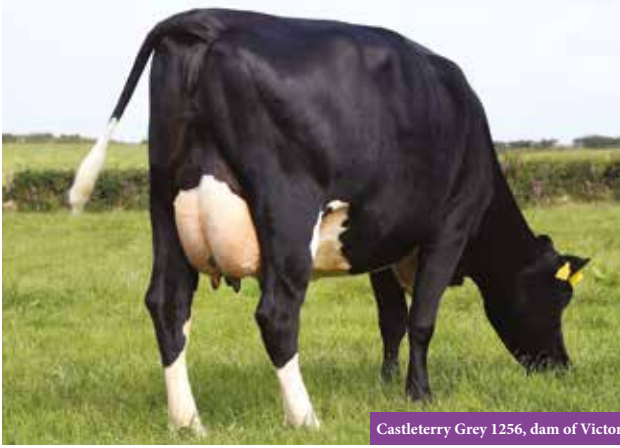
Castleterry Victor

Supplementary Registered

HB No 46 223545551430 AI Code HO6882

70% Holstein, 28% Friesian Source Ireland

DOB 27.01.20



Castleterry Grey 1256, dam of Victor

HOLSTEIN PRODUCTION

AHDB Dairy

PTA August 2022

Production Rel. 67%

SCI/ACI Rel. 63%

SCI £269

ACI £271

Milk Kg -144

Fat Kg +0.4

Fat % +0.13

Protein Kg +6.2

Protein % +0.23

Young Genomic Pedigree Index



High Daughter Fertility

Solid Production Sire

Excellent All Round Grazing Genetics

IRISH PRODUCTION

ICBF

August 2022

Production Rel. 78%

Milk Kg +196

Fat Kg +14.0

Fat % +0.11

Protein Kg +15.0

Protein % +0.15

EBI €278

Milk SI €101

Fertility SI €116

Calving SI €51

Beef SI -€12

Maintenance SI €15

Management SI €4

Health SI €1

Genomic Young Sire

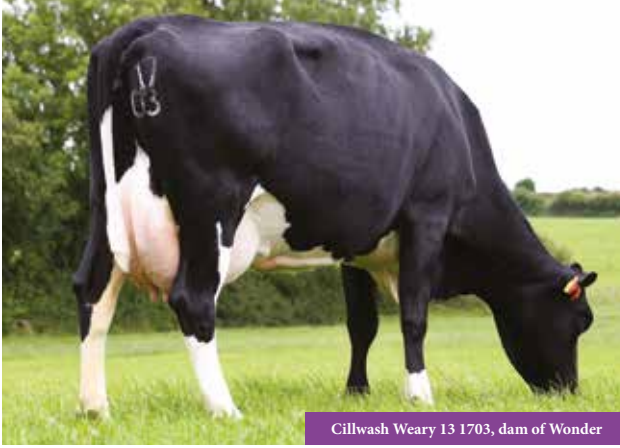
Pedigree

Sire	Killalough Samir				
Dam	Castleterry Grey 1256				
Dam Yields	Milk Kgs	Fat Kgs	Ptn Kgs	Fat%	Ptn %
2 Lact Av	7063	279	266	3.95	3.77
2nd Lact	7243	283	274	3.90	3.79
MGS	Deansgrove Argent				
MGD	Castleterry PBM Grey				
3 Lact Avg	7519	268	273	3.57	3.62
3rd Lact	8329	296	302	3.56	3.62
3rd Dam	Castleterry NFT Grey				
6 Lact Avg	7073	265	254	3.77	3.59

WONDER

Cillwalsh Wonder

HB No 46 217532162149 AI Code HO6595
81% Holstein, 19% Friesian Source Ireland
DOB 31.01.19



Cillwalsh Weary 13 1703, dam of Wonder

HOLSTEIN PRODUCTION

AHDB Dairy PTA August 2022
Production Rel. 64% SCI/ACI Rel. 60%

SCI	£412
ACI	£414
Milk Kg	-56
Fat Kg	+8.7
Fat %	+0.22
Protein Kg	+7.2
Protein %	+0.18

Young Genomic Pedigree Index



Easy Calving for Heifers
Super Components
Tops for Fertility
Great All Rounder

IRISH PRODUCTION

ICBF August 2022
Production Rel. 78%

Milk Kg	+13
Fat Kg	+13.0
Fat %	+0.21
Protein Kg	+9.0
Protein %	+0.15
EBI	€280
Milk SI	€78
Fertility SI	€136
Calving SI	€44
Beef SI	-€8
Maintenance SI	€14
Management SI	€1
Health SI	€15

Genomic Young Sire

Pedigree

Sire	Silverforest Katman				
Dam	Cillwalsh Weary 13				
Dam Yields	Milk Kgs	Fat Kgs	Ptn Kgs	Fat%	Ptn %
5 Lact Av	6401	286	249	4.45	3.88
4th Lact	7054	347	273	4.91	3.87
MGS	Waterwheel Tarus				
MGD	Cillwalsh MTZ Weary				
7 Lact Avg	6835	286	263	4.18	3.85
5th Lact	7711	318	304	4.12	3.94
3rd Dam	Cullwalsh UYC Weary				
2 Lact Avg	6492	240	235	3.70	3.61



AYRSHIRE PRODUCTION

AHDB Dairy PTA August 2022
Production Rel. 47% PLI Rel. 47%

PLI	£437
Milk Kg	+435
Fat Kg	+28.1
Fat %	+0.15
Protein Kg	+21.4
Protein %	+0.11
SCI £241 ACI £265 Rel. 47%	
Genomic Young Sire Pedigree Index	



Component Specialist

Excellent Udders, with improved Teat Length

Improves Longevity and Hoof Health

DANISH PRODUCTION

Denmark, Rel. 83% September 2022

Milk Kg	100
Fat Kg	116
Fat %	120
Protein Kg	110
Protein %	117
Production	116
NTM	24
Daughter Proven, 17 Daughters	

VR Filur X Pellpers

DANISH CONFORMATION

Daughter Proven, 3 Daughters Denmark 09/22 76% Reliability

Frame	113		Excellent
Feet & Legs	106		Excellent
Udder	105		Excellent

MANAGEMENT TRAITS

08/22

HealthyCow Index	£89		Improver
Enviro Cow Index	+2.5		Improver
Fertility Index	+7.9		Improver
Lifespan	+70		Improver
Somatic Cell Count	+3		Improver
Maintenance	+4		Desirable

Below Average Average Above Average

Additional Danish Red Bulls are available on request.

FROERUP

VR Faber Froerup

Danish Red

HB No 17 37789

Beta Casein A1A1

Kappa Casein AA

AI Code RD0918

Source Denmark

DOB 30.08.15



AYRSHIRE PRODUCTION

AHDB Dairy PTA August 2022
Production Rel. 68% PLI Rel. 65%

PLI	£448
Milk Kg	+448
Fat Kg	+28.3
Fat %	+0.14
Protein Kg	+21.0
Protein %	+0.09
SCI £142 ACI £178 Rel. 65%	

Daughter of Froerup

Daughter Proven - 133 Danish Daughters



Widespread Daughter Proof

Top Production Sire

Exceptional Udder and Hoof Health Improvement

Improves Longevity

DANISH PRODUCTION

Denmark, Rel. 95% September 2022

Milk Kg	108
Fat Kg	122
Fat %	115
Protein Kg	114
Protein %	108
Production	120
NTM	32

Daughter Proven, 133 Daughters

VR Faber X R Fanfare

DANISH CONFORMATION

Daughter Proven, 97 Daughters

Denmark 09/22

82% Reliability

Frame	125		Excellent
Feet & Legs	92		Excellent
Udder	107		Excellent

80

120

MANAGEMENT TRAITS

08/22

HealthyCow Index	£70		Improver
Enviro Cow Index	+1.9		Improver
Fertility Index	+1.9		Improver
Lifespan	+95		Improver
Somatic Cell Count	-1		Improver
Mastitis	-2		Improver
Maintenance	+27		Desirable
Gestation Length	-1		Shorter

Below Average

Average

Above Average



AYRSHIRE PRODUCTION

AHDB Dairy PTA August 2022
Production Rel. 43% PLI Rel. 42%

PLI	£468
Milk Kg	+486
Fat Kg	+20.3
Fat %	+0.00
Protein Kg	+21.1
Protein %	+0.08
SCI £284 ACI £305 Rel. 42%	
VR Triad Genomic Young Sire Pedigree Index	



Suitable for Spring Calving Herds

Reduces Stature and Frame

Excellent Legs and Feet

Improves Hoof Health

DANISH PRODUCTION

Denmark, Rel. 78% September 2022

Milk Kg	96
Fat Kg	107
Fat %	114
Protein Kg	107
Protein %	120
Production	110
NTM	29
Genomic Young Sire	

VR Ture X VR Futari

DANISH CONFORMATION

Genomic Type Proof

Denmark 09/22

67% Reliability

Frame	87	<div style="width: 87%;"></div>	Excellent
Feet & Legs	112	<div style="width: 112%;"></div>	Excellent
Udder	101	<div style="width: 101%;"></div>	Excellent

80120

MANAGEMENT TRAITS

08/22

HealthyCow Index	£137	<div style="width: 137%;"></div>	Improver
Enviro Cow Index	+2.6	<div style="width: 126%;"></div>	Improver
Fertility Index	+9.7	<div style="width: 197%;"></div>	Improver
Lifespan	+76	<div style="width: 176%;"></div>	Improver
Somatic Cell Count	-11	<div style="width: 89%;"></div>	Improver
Maintenance	-6	<div style="width: 94%;"></div>	Desirable

Below Average Average Above Average

Additional Danish Red Bulls are available on request.



AYRSHIRE PRODUCTION

AHDB Dairy PTA August 2022
Production Rel. 37% PLI Rel. 38%

PLI **£391**

Milk Kg **+346**

Fat Kg **+19.3**

Fat % **+0.08**

Protein Kg **+17.6**

Protein % **+0.09**

SCI £230 ACI £234 Rel. 38%

VR Uppera

Genomic Young Sire Pedigree Index



High Production Sire

Suitable for Robotic Milking Schemes

Improves Longevity

Excellent Udders

DANISH PRODUCTION

Denmark, Rel. 77% September 2022

Milk Kg **106**

Fat Kg **123**

Fat % **120**

Protein Kg **117**

Protein % **117**

Production **123**

NTM **28**

Genomic Young Sire

VR Usva X VR Figarol

DANISH CONFORMATION

Genomic Type Proof

Denmark 09/22
68% Reliability

Frame	101	<div style="width: 25%;"></div>	Improver
Feet & Legs	106	<div style="width: 33%;"></div>	Excellent
Udder	108	<div style="width: 37%;"></div>	Excellent

80 120

MANAGEMENT TRAITS

08/22

HealthyCow Index	£93	<div style="width: 45%;"></div>	Improver
Enviro Cow Index	+2.1	<div style="width: 55%;"></div>	Improver
Fertility Index	+6.9	<div style="width: 65%;"></div>	Improver
Lifespan	-5	<div style="width: 40%;"></div>	Improver
Somatic Cell Count	-5	<div style="width: 40%;"></div>	Improver
Maintenance	-5	<div style="width: 40%;"></div>	Desirable

Below Average Average Above Average



AYRSHIRE PRODUCTION

AHDB Dairy PTA August 2022
Production Rel. 74% PLI Rel. 72%

PLI	£408
Milk Kg	+155
Fat Kg	+24.5
Fat %	+0.29
Protein Kg	+14.4
Protein %	+0.15
SCI £210 ACI £237 Rel. 72%	
Daughter Proven, 814 Danish Daughters	



Excellent Health Traits

Superb Udders

Tremendous Components

Daughter Proven

DANISH PRODUCTION

Denmark, Rel. 97% September 2022

Milk Kg	98
Fat Kg	120
Fat %	128
Protein Kg	106
Protein %	115
Production	115
NTM	31
Daughter Proven, 814 Daughters	

**VR Vlijar X K Rockstar X
R Fastrup**

DANISH CONFORMATION

Denmark 09/22
Daughter Proven, 290 Daughters 93% Reliability

Frame	117		Excellent
Feet & Legs	107		Excellent
Udder	122		Excellent

80 120

MANAGEMENT TRAITS		08/22
HealthyCow Index	£167	Improver
Enviro Cow Index	+1.6	Improver
Fertility Index	+6.7	Improver
Lifespan	+67	Improver
Somatic Cell Count	-12	Improver
Mastitis	-2	Improver
Maintenance	+20	Desirable
Calf Survival	+2.2	Improver
Gestation Length	-3	Shorter

Below Average Average Above Average

VIRKILD

VR Virkild

Danish Red



HB No 73 38359
Beta Casein A1A2
Kappa Casein AA

AI Code RD0904
Source Denmark
DOB 23.09.20



NEW

VR Uppera

UK AYRSHIRE CONVERTED PRODUCTION

AHDB Dairy PTA August 2022
Production Rel. 62%

PLI	£375
Milk Kg	+329
Fat Kg	+24.5
Fat %	+0.17
Protein Kg	+18.5
Protein %	+0.12
SCI £136 ACI £176	
Genomic Young Sire Pedigree Index	



Improves Udder and Hoof Health

Exceptional Longevity

Top Udder Sire

Suitable for Robotic Milking Schemes

DANISH PRODUCTION

Denmark, Rel. 78% September 2022

Milk Kg	100
Fat Kg	115
Fat %	119
Protein Kg	108
Protein %	114
Production	114
NTM	26
Genomic Young Sire	

VR Vario X VR Favre

DANISH CONFORMATION

Denmark 09/22
Genomic Type Proof 69% Reliability

Frame	112		Excellent
Feet & Legs	104		Excellent
Udder	109		Excellent

80 120

MANAGEMENT TRAITS		08/22
Fertility Index	-0.7	
Lifespan	+115	
Somatic Cell Count	-12	
Mastitis	-2	

Below Average Average Above Average

Improver
Improver
Improver
Improver

VILPERI

VR Viljar Vilperi

91% Ayrshire



HB No 73 48035
Beta Casein A2A2
Kappa Casein AB

AI Code A 9069
Source Finland
DOB 10.12.17



AYRSHIRE PRODUCTION

AHDB Dairy PTA August 2022
Production Rel. 74% PLI Rel. 72%

PLI	£374
Milk Kg	+76
Fat Kg	+14.4
Fat %	+0.18
Protein Kg	+11.6
Protein %	+0.15
SCI £240 ACI £240 Rel. 72%	
Daughter Proven - 1456 Danish Daughters	



Exceptional Daughter Fertility

Top Udder Bull

Daughter Proven

Excellent Temperament

DANISH PRODUCTION

Denmark, Rel. 98% September 2022

Milk Kg	95
Fat Kg	104
Fat %	112
Protein Kg	99
Protein %	109
Production	103
NTM	22
Daughter Proven, 1456 Daughters	

VR Viljar X VR Hambo

DANISH CONFORMATION

Denmark 09/22
Daughter Proven, 543 Daughters 96% Reliability

Frame	108		Excellent
Feet & Legs	112		Excellent
Udder	111		Excellent

80 120

MANAGEMENT TRAITS		08/22
HealthyCow Index	£184	Improver
Enviro Cow Index	+1.7	Improver
Fertility Index	+14.0	Improver
Lifespan	+85	Improver
Somatic Cell Count	-18	Improver
Mastitis	-2	Improver
Maintenance	+9	Desirable
Calf Survival	-2.6	Improver
Gestation Length	-1	Shorter

Below Average Average Above Average

ILANNE

Ilanne

Montbelliarde

HB No 28 113019487

Beta Casein A1A2

Kappa Casein AB

AI Code MB2254

Source France

DOB 15.01.13



Daughter: Majeste

MONTBELLIARDE PRODUCTION

AHDB Dairy Production Rel. 96%	PTA August 2022 PLI Rel. 73%
PLI	£201
Milk Kg	+128
Fat Kg	9.6
Fat %	0.06
Protein Kg	7.4
Protein %	0.04
Persistency	63%
SCI £188 ACI £238 Rel. 73%	
Daughter Proven – 168 UK Dtrs/27 Hds	



Daughter Proven

***Recommended for Cross
Breeding***

***Excellent all round Type and
Production***

FRENCH PRODUCTION

France, Rel. 95%	August 2022
Milk Kg	+647
Fat Kg	+34
Fat %	+1.1
Protein Kg	+25
Protein %	+0.5
INEL Prod. Index	+32
ISU Total Merit	146
Montbelliarde, 472 Daughters in 417 Herds	

Brink X Carter X Pernan

MANAGEMENT TRAITS

08/22

HealthyCow Index	£71	Improver
Enviro Cow Index	+2.6	Improver
Fertility Index	+5.6	Improver
Lifespan	+101	Improver
Somatic Cell Count	+1	Improver
Mastitis	+1	Improver
Lameness Adv.	+0.4	Improver
Calf Survival	-1.4	Improver
Gestation Length	-3	Shorter
Dig. Dermatitis	+0.2	Improver
Dairy Carcase	+5.1	Improver

Below Average Average Above Average

MONTBELLIARDE CONFORMATION

Daughter Proven, 533 Dtrs / 437 Herds, Rel. 93%

France 08/22

Overall Type	114	Excellent
Format	103	Good
Feet and Legs	114	Excellent
Teat	103	Good
Udder	115	Excellent
Beef Value	93	Good

88

112

NEUTRINO

Neutrino

Montbelliarde



HB No 28 3803364134

AI Code MB2346

Source France

DOB 2017



Daughter: Pampa

MONTBELLARDE PRODUCTION

AHDB Dairy	PTA August 2022
Production Rel. 76%	PLI Rel. 51%
PLI	£229
Milk Kg	+177
Fat Kg	+10.4
Fat %	+0.05
Protein Kg	+16.9
Protein %	+0.16
Persistence	63%
SCI £207 ACI £236 Rel. 51%	
Daughter Proven - 44 French Dtrs/40 Hds	



FRENCH PRODUCTION

France, Rel. 95%	August 2022
Milk Kg	+631
Fat Kg	+63
Fat %	+4.9
Protein Kg	+54
Protein %	+4.6
INEL Prod. Index	+72
ISU Total Merit	154
Montbelliarde, 472 Daughters in 417 Herds	

Exceptional Components

Daughter Proven

Suitable for Cross Breeding Herds

Recommended for Robotic Milking

Jilbeer X Fadil X Robin

MANAGEMENT TRAITS		08/22
HealthyCow Index	-£19	Improver
Enviro Cow Index	+2.6	Improver
Somatic Cell Count	-2	Improver
Mastitis	+1	Improver
Calf Survival	+3.3	Improver
Gestation Length	+1	Shorter

Below Average Average Above Average

MONTBELLARDE CONFORMATION		France 08/22
Daughter Proven, 32 Dtrs / 30 Herds, Rel. 71%		
Overall Type	110	Excellent
Format	104	Good
Feet and Legs	109	Excellent
Teat	93	Good
Udder	106	Excellent
Beef Value	109	Good
	88	112



Dam: Macarena

UK MONTBELLARDE CONVERTED PRODUCTION PROOF

AHDB Dairy PTA August 2022
Production Rel. 60% Genomic

PLI	£185
Milk Kg	+126
Fat Kg	+9.3
Fat %	+0.06
Protein Kg	+8.5
Protein %	+0.06



FRENCH PRODUCTION

France, Rel. 75% August 2022

Milk Kg	+1126
Fat Kg	+58
Fat %	+1.8
Protein Kg	+46
Protein %	+1.4
INEL Prod. Index	+59
ISU Total Merit	173

Montbelliarde, Genomic Young Sire

**Superb Udders with
Excellent Teat Placement
and Length**

**Recommended for Improving
Components, especially Fat**

Improves all Health Traits

Milton X Helux X Cortil

MANAGEMENT TRAITS		08/22
Somatic Cell Count	-31	Improver
Mastitis	+0	Improver

Below Average Average Above Average

MONTBELLARDE CONFORMATION		France 08/22
Genomic Type Proof		
Overall Type	124	Excellent
Format	105	Good
Feet and Legs	119	Excellent
Teat	115	Good
Udder	124	Excellent
Beef Value	101	Good

88 112



Dam: Noisett

UK MONTBELLARDE CONVERTED PRODUCTION PROOF

AHDB Dairy

PTA August 2022

Production Rel. 62%

Genomic

PLI	£260
Milk Kg	+162
Fat Kg	+9.3
Fat %	+0.04
Protein Kg	+11.3
Protein %	+0.08



High Production Sire

Lowers Stature

Exceptional Legs and Feet

Recommended for Improving Udders and Teat Length

FRENCH PRODUCTION

France, Rel. 74%

August 2022

Milk Kg	+1240
Fat Kg	+58
Fat %	+1.6
Protein Kg	+55
Protein %	+1.6
INEL Prod. Index	+68
ISU Total Merit	188

Montbelliarde, Genomic Young Sire

Mistik X Jolimome X Hobbit

MANAGEMENT TRAITS

08/22

Somatic Cell Count	-36		Improver
Mastitis	+4		Improver

Below Average Average Above Average

MONTBELLARDE CONFORMATION

Genomic Type Proof

France 08/22

Overall Type	127		Excellent
Format	106		Good
Feet and Legs	125		Excellent
Teat	94		Good
Udder	127		Excellent
Beef Value	92		Good

88

112



NEW

FLECKVIEH PRODUCTION PROOF

AHDB Dairy Production Rel. 75%	PTA August 2022 PLI Rel. 51%
PLI	£250
Milk Kg	+137
Fat Kg	+11.3
Fat %	+0.08
Protein Kg	+11.9
Protein %	+0.10

Daughter Bambi

Daughter Proven



High Ranking Daughter Proven Sire

Fantastic Udders

Excellent Components

Suitable for Cross Breeding

GERMAN PRODUCTION

Germany, Rel. 99%	August 2022
Milk Kg	+543
Fat Kg	+31
Fat %	+0.09
Protein Kg	+29
Protein %	+0.11
Milk Index	120
Total Merit	135

Daughter Proven, 628 Daughters

Hurly X Narr X Zahner

FLECKVIEH CONFORMATION

Daughter Proven, 190 Daughters		Germany 08/22
Frame	110	Excellent
Muscling	98	Excellent
Feet and Legs	116	Excellent
Udder	126	Excellent

88 82 76 70 64 58 52 46 40 34 28 22 16 10 4

MANAGEMENT TRAITS

08/22

HealthyCow Index	£55	Improver
Enviro Cow Index	+2.1	Improver
Somatic Cell Count	-15	Improver
Mastitis	-3	Improver
Gestation Length	-1	Shorter

Below Average Average Above Average

MANAUS

Manaus

Fleckvieh



HB No 23 667162219

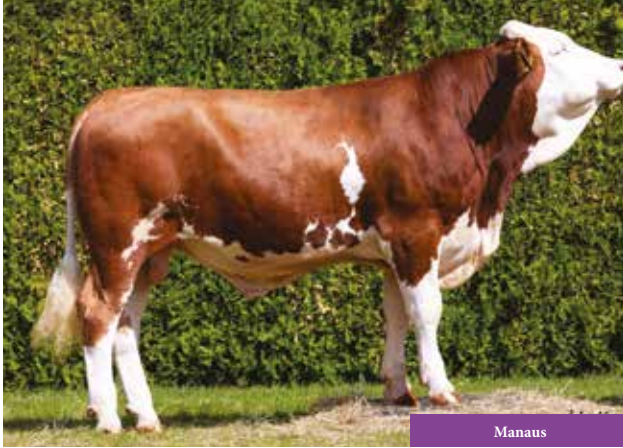
AI Code SM0020

Beta Casein A1A2

Source Germany

Kappa Casein AA

DOB 03.07.18



Manaus

Daughter Proven

FLECKVIEH PRODUCTION PROOF

AHDB Dairy

PTA August 2022

Production Rel. 57%

PLI Rel. 38%

PLI	£80
Milk Kg	+155
Fat Kg	+7.4
Fat %	+0.02
Protein Kg	+3.0
Protein %	-0.03

Top Production Sire

Improves Feet and Legs

Excellent Udders with Good Udder Support

Positive for Muscularity



GERMAN PRODUCTION

Germany, Rel. 92%

August 2022

Milk Kg	+835
Fat Kg	+41
Fat %	+0.07
Protein Kg	+19
Protein %	-0.12
Milk Index	120
Total Merit	126

Daughter Proven, 40 Daughters

Miami X Polaroid X Everest

FLECKVIEH CONFORMATION

Daughter Proven, 25 Daughters

Germany 08/22

Frame	103	Excellent
Muscling	114	Excellent
Feet and Legs	119	Excellent
Udder	103	Excellent

88

112

MANAGEMENT TRAITS

08/22

HealthyCow Index	£24	Improver
Enviro Cow Index	+0.7	Improver
Somatic Cell Count	-7	Improver
Mastitis	-1	Improver

Below Average Average Above Average

VIRGINIA

Virginia

Fleckvieh

HB No 23 953268383

AI Code SM0461

Beta Casein A1A2

Source Germany

Kappa Casein AA

DOB 23.11.18



UK FLECKVIEH CONVERTED GENOMIC PRODUCTION PROOF

AHDB Dairy

PTA August 2022

Production Rel. 70%

PLI	£245
Milk Kg	+439
Fat Kg	+17.7
Fat %	+0.00
Protein Kg	+16.4
Protein %	+0.02



High Production Sire

Strong Robust Cows

Recommended for Cross Breeding

Excellent Udders

GERMAN PRODUCTION

Germany, Rel. 87%

August 2022

Milk Kg	+899
Fat Kg	+36
Fat %	-0.02
Protein Kg	+36
Protein %	+0.05
Milk Index	125
Total Merit	133

Genomic Young Sire

**Villeroy X Hubraum X
Hurrigan**

FLECKVIEH CONFORMATION

Young Genomic Pedigree Index

Germany 08/22

Frame	106		Excellent
Muscling	101		Excellent
Feet and Legs	108		Excellent
Udder	116		Excellent

88

112

MANAGEMENT TRAITS

08/22

Somatic Cell Count	-4		Improver
Mastitis	+1		Improver

Below Average Average Above Average



JERSEY PRODUCTION	
AHDB Dairy	PTA August 2022
Production Rel. 60%	
PLI	£282
Milk Kg	+223
Fat Kg	+20
Fat %	+0.13
Protein Kg	+5.5
Protein %	-0.05
SCI £487 ACI £465 Rel. 56%	
VJ Kjolby	Genomic Young Sire Pedigree Index



High Production Sire
***Recommended for Robotic
Milking Schemes***
Excellent Health Traits

DANISH PRODUCTION	
Denmark, Rel. 62%	September 2022
Milk Kg	111
Fat Kg	113
Fat %	98
Protein Kg	116
Protein %	102
Production	116
NTM	22
Genomic Young Sire	

VJ Kantona X VJ Pil

MANAGEMENT TRAITS			08/22
Lifespan	+85		Improver Improver Desirable Desirable
Somatic Cell Count	-21		
Mastitis	-2		
Maintenance	+1		
			Below Average Average Above Average

JERSEY CONFORMATION		AHDB 08/22 61% Reliability	
Type Merit	+0.81		Excellent
Mammary	+0.4		Excellent
Legs & Feet	+0.3		Excellent
		-2	+2

DANISH CONFORMATION		Denmark 09/22 78% Reliability	
Frame	109		Excellent
Feet & Legs	110		Excellent
Udder	109		Excellent
		80	120

***Additional Jersey Bulls are
available on request.***



Dam: Olympe

NORMANDY PRODUCTION

France August 2022 Production Rel. 66%

Milk Kg +1211

Fat Kg +68

Fat % +3.3

Protein Kg +58

Protein % +3.3

INEL 75

ISU 183

Young Genomic Pedigree Index

Massive Production Sire
Outstanding Legs and Feet
Excellent Udder Health



Only Val X Montfort X
Inhappy

French Management Traits

France 08/22

Udder Health	+3.0
Somatic Cell Count	+3.3
Mastitis	+1.9
Fertility Cows	+0.9
Calving Interval	-1.2
Longevity	+1.8
Calving Ease	89
Milking Speed	-0.4
Temperament	+0.4

NORMANDY CONFORMATION

Young Genomic Pedigree Index 54% Rel.

France 08/22

Total Type Index	+1.8	Excellent
Udder Index	+1.5	Excellent
Legs and Feet	+2.0	Excellent
Stature	+0.4	160 cm
Chest Width	-0.3	Wide
Chest Depth	+0.3	Deep
Rump Angle	-0.5	Low Pins
Thurl Width	-0.3	Wide
Rear Leg Side	+1.2	Sickled
Rear Leg Rear	+2.1	Good
Foot Angle	+0.8	Steep
Fore Udder Att	+1.4	Tight
Rear Udder Att	+1.6	Very High
Medial Ligament	+0.6	Strong
Udder Depth	+0.4	20cm Above
Front Teat Pl.	+0.7	Close
Teat Direction	+1.9	Good
Udder Balance	+2.9	Good
Locomotion	+2.2	Excellent
Muscularity	-0.3	High
Total Beef Value	-1.3	Excellent



NORMANDY PRODUCTION

France August 2022 Production Rel. 62%

Milk Kg +861

Fat Kg +48

Fat % +2.4

Protein Kg +31

Protein % +0.8

INEL 42

ISU 175

Ronaldinho

Young Genomic Pedigree Index

Tremendous Component Improvement

Lowers Stature

Increases Longevity



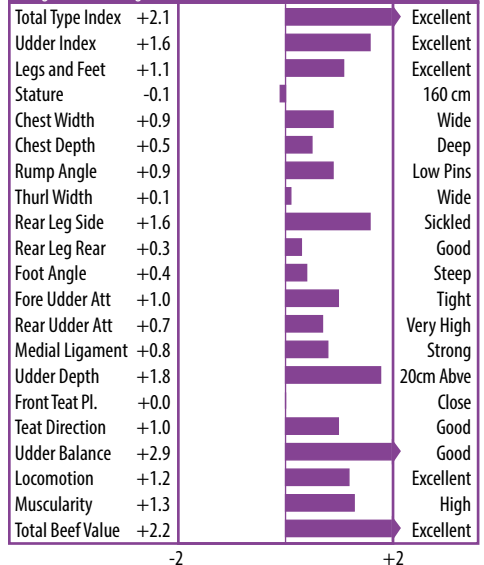
Oberlin X Magma X Halias Isy

French Management Traits	
France 08/22	
Udder Health	+1.1
Somatic Cell Count	+1.5
Mastitis	+0.2
Fertility Cows	+0.8
Calving Interval	+0.6
Longevity	+2.1
Calving Ease	92
Milking Speed	+0.6
Temperament	+0.3

NORMANDY CONFORMATION

Young Genomic Pedigree Index 54% Rel.

France 08/22





DAM: COTONHALL PINGERLEY SONNSCHEIN EX95 PRODUCTION VALUES

AHDB Dairy

PTA August 2022

Production Rel. 70%

PLI	£179
Milk Kg	+458
Fat Kg	+21.4
Fat %	+0.05
Protein Kg	+15.2
Protein %	+0.00

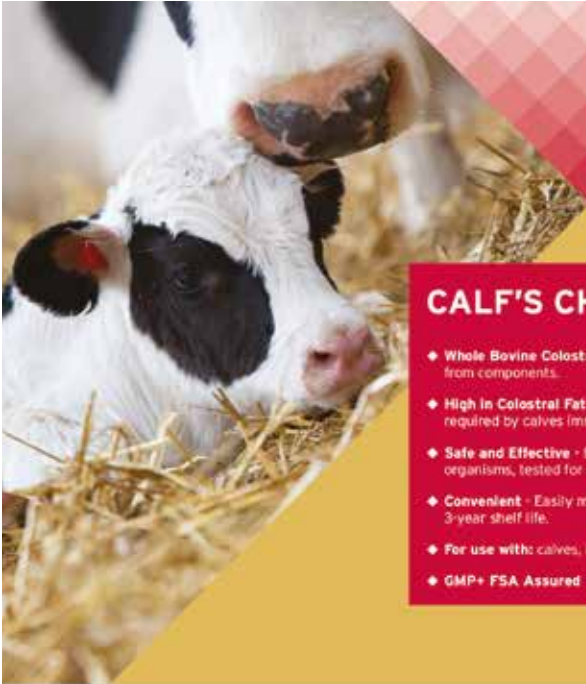
Dam Classified EX95

High Yielding Dam, with over 10,000 Kgs Milk

Tremendous Legs and Feet, with Excellent Locomotion

PEDIGREE

Sire	Lands Brook Comanche
PGS	Mapleton VLY J Zumba
Dam	Cotonhall Pingerley Sonnschein EX95
	1 305D 5752 KGM 4.27%F 3.56%P
	2 305D 7857 KGM 4.47%F 3.47%P
	3 305D 9399 KGM 4.12%F 3.34%P
	4 305D 9598 KGM 4.05%F 3.50%P
	5 305D 9931 KGM 4.67%F 3.53%P
	6 305D 10353 KGM 4.64%F 3.44%P
MGS	Treeton Pingerley ET
MGD	Nejay Sonnschein 6th VG85



CALF'S CHOICE TOTAL® 100

- ◆ **Whole Bovine Colostrum** - not skimmed or reconstructed from components.
- ◆ **High in Colostral Fat** - important energy source required by calves immediately after birth.
- ◆ **Safe and Effective** - free of disease-causing organisms, tested for safety and efficacy.
- ◆ **Convenient** - Easily mixes in under 15 seconds. 3-year shelf life.
- ◆ **For use with** calves, lambs and goat kids
- ◆ **GMP+ FSA Assured**



Rumilife® CAL24™ Nutritional Supplement

THREE REASONS TO CHOOSE CAL24

IT'S SIMPLE.

SAVE TIME AND LABOR

give two boluses right after calving

No need for a second bolus 12 hours later



IT'S UNIQUE.

TWO FORMS OF READILY AVAILABLE CALCIUM

plus magnesium & vitamin D

allow for optimal calcium absorption



IT'S COMPLETE.

PROVIDES IMMEDIATE AND SUSTAINED RELEASE CALCIUM

CALCIUM CHLORIDE acts rapidly for immediate absorption in the rumen

CALMIN regulates absorption over time as a combination of highly-absorbable calcium & magnesium

VITAMIN D helps facilitate active, sustained calcium transfer beyond the rumen



Ai SERVICES

- NORTHERN IRELAND -

For further information, contact your local Breeding Specialist.

AI SERVICES

- NORTHERN IRELAND -

Helping Northern Irish Farmers to

Breed and Succeed!

Breeding Specialist Team

AI Technician Team

Pregnancy Scanning Service

Top Dairy Genetics

**Breed-Leading
Beef Sires**

Liquid Nitrogen Delivery Service

Embryo Transfer Services

Stud Facilities

DIY Training

DIY Equipment

At Your Service . . .

Headquarters and Stud Facility	Ballycraigy	028 9083 3123
Breeding Information	Ivan Minford	078 3118 9852 028 9083 3123 iminford@ai-services.co.uk
	Michelle Hill	028 9083 3123 mhill@ai-services.co.uk

BREEDING SPECIALISTS

ANTRIM / LONDONDERRY	Ben Mallon	078 8444 3899
	Ivan Minford	078 3118 9852
	Gary Henderson	079 8934 6226
DOWN / ARMAGH	James Compston	079 7660 5701
ARMAGH / TYRONE	Nigel Spence	078 0927 4141
FERMANAGH / TYRONE	John Sproule	077 7816 9263
EMBRYO TRANSFER	David McCall	077 7880 5357
STUD MANAGER	Robin Boyd	077 9934 6784
DIY TRAINING	Ballycraigy	028 9083 3123



AI SERVICES
- NORTHERN IRELAND -

Ballycraigy 671 Antrim Road Newtownabbey
Co Antrim BT36 4RL Tel: 028 9083 3123
Web: www.ai-services.co.uk
Email: info@ai-services.co.uk

To Book a Service Call or
Pregnancy Scan, Telephone:

028 9083 3123