

# *High EBI Grazing Sires 2022*



*The Building Blocks to Long  
Term Profitability*



**Ai SERVICES**  
– NORTHERN IRELAND –

**EUR****GENE**  
innovation driving results

To Book a Service Call or  
Pregnancy Scan, Telephone: **028 9083 3123**

Ballycraigy 671 Antrim Road Newtownabbey Co Antrim BT36 4RL  
Tel: 028 9083 3123 Web: [www.ai-services.co.uk](http://www.ai-services.co.uk) Email: [info@ai-services.co.uk](mailto:info@ai-services.co.uk)

# MAGNIFICO

Hanrahan Magnifico



HB No 46 213675211055 AI Code HO6605  
88% Holstein, 12% Friesian Source Ireland  
DOB 07.02.20



VG89 Dam and EX90 Granddam

**Dam EX90 Mammary 4th Calver**  
**Strong Functional Cows**  
**+38 Kgs Solids**

Pedigree						
<b>Sire</b>	<b>Kifeacle Pivotal</b>					
<b>Dam</b>	<b>Hanrahan S2304 Maureen VG89</b>					
Dam Yields	Milk Kgs	Fat Kgs	Ptn Kgs	Fat%	Ptn %	
4 Lact Av	7715	353	286	4.60	3.72	
3rd Lact	8926	398	329	4.46	3.69	
<b>MGS</b>	<b>Interstice</b>					
<b>MGD</b>	<b>Hanrahan DDG Maureen EX90</b>					
5 Lact Avg	7180	301	245	4.24	3.42	
4th Lact	8751	350	299	4.00	3.42	
<b>3rd Dam</b>	<b>Hanrahan Uphill Maureen X UPH</b>					
5 Lact Avg	6486	203	240	3.12	3.70	

IRISH PRODUCTION	
ICBF	January 2022
Production Rel. 74%	EBI Rel. 54%
<b>Milk Kg</b>	<b>+169</b>
<b>Fat Kg</b>	<b>+24</b>
<b>Fat %</b>	<b>+0.29</b>
<b>Protein Kg</b>	<b>+14</b>
<b>Protein %</b>	<b>+0.14</b>
<b>EBI</b>	<b>€310</b>
<b>Milk SI</b>	<b>€116</b>
<b>Fertility SI</b>	<b>€108</b>
<b>Calving SI</b>	<b>€63</b>
<b>Beef SI</b>	<b>-€10</b>
<b>Maintenance SI</b>	<b>€9</b>
<b>Management SI</b>	<b>€5</b>
<b>Health SI</b>	<b>€20</b>
<b>Genomic Young Sire</b>	

UK HOLSTEIN PRODUCTION			
AHDB Dairy 12/21	Production Rel. 66%		
SCI	£345	ACI	£424
Milk Kg	-97	SCI/ACI Rel.	63%
Fat Kg	+16.2	Fat %	+0.41
Protein Kg	+9.5	Protein %	+0.26
<b>Genomic Young Sire</b>			

# PHOENIX

Olcastletown Phoenix 1849



HB No 46 218577531849 AI Code HO6617  
94% Holstein, 6% Friesian Source Ireland  
DOB 26.01.18



Dam: Olcastletown Apple Phoinex VG89

**Dam and Grand Dam are both 4% Protein Cows**  
**Longevity**  
**Milk + Conformation**

Pedigree						
<b>Sire</b>	<b>Gortreen Sebastain</b>					
<b>Dam</b>	<b>Olcastletown Apple Phoinex VG89</b>					
Dam Yields	Milk Kgs	Fat Kgs	Ptn Kgs	Fat%	Ptn %	
6 Lact Av	7370	324	287	4.81	3.89	
6th Lact	8079	412	319	5.10	3.95	
<b>MGS</b>	<b>Gran-J Oman Mccormick</b>					
<b>MGD</b>	<b>Olcastletown Keet Phoinex VG86</b>					
8 Lact Avg	6450	308	254	4.78	3.95	
6th Lact	7557	354	303	4.68	4.01	
<b>3rd Dam</b>	<b>Olcastletown RUU Phoinex</b>					
6 Lact Avg	6109	255	218	4.17	3.56	

IRISH PRODUCTION	
ICBF	January 2022
Production Rel. 80%	EBI Rel. 64%
<b>Milk Kg</b>	<b>+98</b>
<b>Fat Kg</b>	<b>+22</b>
<b>Fat %</b>	<b>+0.31</b>
<b>Protein Kg</b>	<b>+12</b>
<b>Protein %</b>	<b>+0.15</b>
<b>EBI</b>	<b>€267</b>
<b>Milk SI</b>	<b>€106</b>
<b>Fertility SI</b>	<b>€125</b>
<b>Calving SI</b>	<b>€29</b>
<b>Beef SI</b>	<b>-€6</b>
<b>Maintenance SI</b>	<b>€5</b>
<b>Management SI</b>	<b>€1</b>
<b>Health SI</b>	<b>€8</b>
<b>Genomic Young Sire</b>	

UK Conv. HOLSTEIN PRODUCTION			
AHDB Dairy 12/21	Production Rel. 64%		
Milk Kg	-471	Prod. Rel.	64%
Fat Kg	+8.4	Fat %	+0.35
Protein Kg	-0.1	Protein %	+0.20
<b>Genomic Young Sire</b>			



3 Irish Faithful Daughters

**Top Daughter Proven sire**  
**Medium sized black daughters**  
**Improves Teat Length**

Pedigree					
<b>Sire</b>	Castleblack Odie				
<b>Dam</b>	Possextown Ellie 866				
Dam Yields	Milk Kgs	Fat Kgs	Ptn Kgs	Fat%	Ptn %
5 Lact Av	6360	301	242	4.74	3.81
5th Lact	6725	323	262	4.8	3.9
<b>MGS</b>	Savannahs HF Hammer				
<b>MGD</b>	Possextown HZO Ellie				
6 Lact Avg	6133	229	229	3.67	3.74
3rd Lact	6517	239	227	3.66	3.48
<b>3rd Dam</b>	Possextown Lye Ellie				
5 Lact Avg	6486	203	240	3.12	3.70

## IRISH PRODUCTION

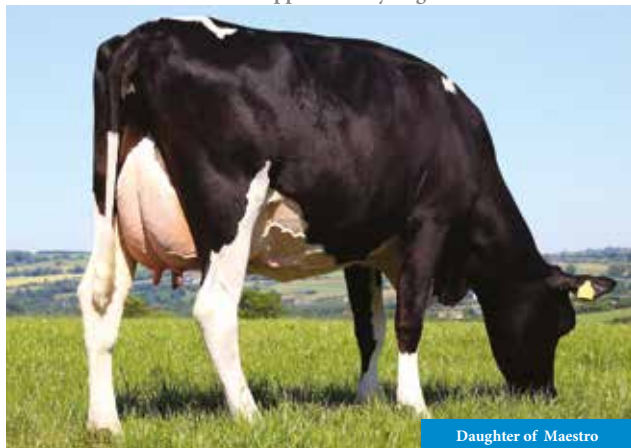
ICBF	January 2022
Production Rel. 99%	EBI Rel. 92%
<b>Milk Kg</b>	<b>+51</b>
<b>Fat Kg</b>	<b>+15</b>
<b>Fat %</b>	<b>+0.22</b>
<b>Protein Kg</b>	<b>+11</b>
<b>Protein %</b>	<b>+0.16</b>
<b>EBI</b>	<b>€245</b>
<b>Milk SI</b>	<b>€90</b>
<b>Fertility SI</b>	<b>€105</b>
<b>Calving SI</b>	<b>€41</b>
<b>Beef SI</b>	<b>-€17</b>
<b>Maintenance SI</b>	<b>€16</b>
<b>Management SI</b>	<b>€3</b>
<b>Health SI</b>	<b>€7</b>

Daughter Proven Sire 950 Dtrs/339 Hds

## UK HOLSTEIN PRODUCTION

AHDB Dairy 12/21	Production Rel. 79%		
SCI	£313	ACI	£365
Milk Kg	-15	SCI/ACI Rel.	74%
Fat Kg	+9.1	Fat %	+0.19
Protein Kg	+8.8	Protein %	+0.19

Daughter Proven Sire



Daughter of Maestro

**High farmer satisfaction**  
**Outstanding Daughter Fertility**  
**Reliably proven**

Pedigree					
<b>Sire</b>	Imleach Lucky Whistler				
<b>Dam</b>	Modeligo WPE May VG86				
Dam Yields	Milk Kgs	Fat Kgs	Ptn Kgs	Fat%	Ptn %
11 Lact Av	6447	279	235	4.32	3.65
3rd Lact	8448	373	296	4.41	3.50
<b>MGS</b>	Whinlea Palad Eckland				
<b>MGD</b>	Modeligo CWJ May 1506				
9 Lact Avg	5600	241	197	4.32	3.52
4th Lact	6796	289	232	4.25	3.41
<b>3rd Dam</b>	Laha CBH May 1106				
11 Lact Avg	5453	233	193	4.25	3.54

## IRISH PRODUCTION

ICBF	January 2022
Production Rel. 99%	EBI Rel. 96%
<b>Milk Kg</b>	<b>+67</b>
<b>Fat Kg</b>	<b>+17</b>
<b>Fat %</b>	<b>+0.25</b>
<b>Protein Kg</b>	<b>+13</b>
<b>Protein %</b>	<b>+0.18</b>
<b>EBI</b>	<b>€228</b>
<b>Milk SI</b>	<b>€103</b>
<b>Fertility SI</b>	<b>€63</b>
<b>Calving SI</b>	<b>€56</b>
<b>Beef SI</b>	<b>-€7</b>
<b>Maintenance SI</b>	<b>€10</b>
<b>Management SI</b>	<b>€5</b>
<b>Health SI</b>	<b>-€2</b>

Daughter Proven Sire 6632 Dtrs/1212 Hds

## UK HOLSTEIN PRODUCTION

AHDB Dairy 12/21	Production Rel. 89%		
SCI	£199	ACI	£212
Milk Kg	-89	SCI/ACI Rel.	84%
Fat Kg	+8.3	Fat %	+0.24
Protein Kg	+6.6	Protein %	+0.19

Daughter Proven Sire - 24 UK Dtrs / 3 UK Hds



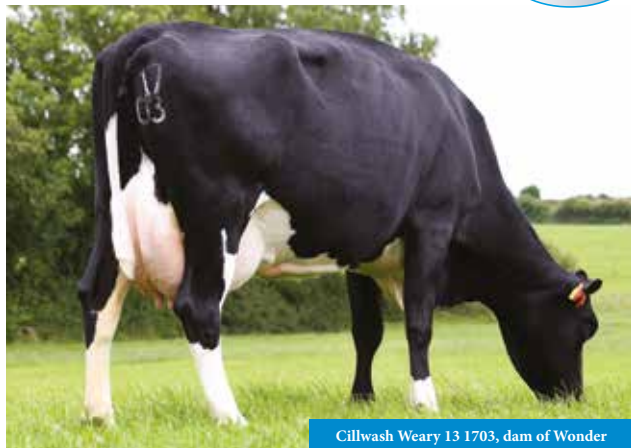
Castleterry Grey 1256, dam of Victor

**High Daughter Fertility**  
**Solid Production Sire**  
**Excellent all round grazing genetics**

Pedigree					
<b>Sire</b>	Killalough Samir				
<b>Dam</b>	Castleterry Grey 1256				
Dam Yields	Milk Kgs	Fat Kgs	Ptn Kgs	Fat%	Ptn %
2 Lact Av	7063	279	266	3.95	3.77
2nd Lact	7243	283	274	3.90	3.79
<b>MGS</b>	Deansgrove Argent				
<b>MGD</b>	Castleterry PBM Grey				
3 Lact Avg	7519	268	273	3.57	3.62
3rd Lact	8329	296	302	3.56	3.62
<b>3rd Dam</b>	Castleterry NFT Grey				
6 Lact Avg	7073	265	254	3.77	3.59

IRISH PRODUCTION	
ICBF	January 2022
Production Rel. 77%	EBI Rel. 58%
<b>Milk Kg</b>	<b>+199</b>
<b>Fat Kg</b>	<b>+14</b>
<b>Fat %</b>	<b>+0.11</b>
<b>Protein Kg</b>	<b>+15</b>
<b>Protein %</b>	<b>+0.15</b>
<b>EBI</b>	<b>€287</b>
<b>Milk SI</b>	<b>€102</b>
<b>Fertility SI</b>	<b>€118</b>
<b>Calving SI</b>	<b>€52</b>
<b>Beef SI</b>	<b>-€13</b>
<b>Maintenance SI</b>	<b>€15</b>
<b>Management SI</b>	<b>€4</b>
<b>Health SI</b>	<b>€8</b>
Genomic Young Sire	

UK HOLSTEIN PRODUCTION			
AHDB Dairy 12/21	Production Rel. 77%		
SCI	£259	ACI	£300
Milk Kg	-141	SCI/ACI Rel.	63%
Fat Kg	+2.6	Fat %	+0.18
Protein Kg	+7.6	Protein %	+0.25
Genomic Young Sire			



Cillwalsh Weary 13 1703, dam of Wonder

**Tremendous EBI**  
**Easy calving for heifers**  
**Super components and tops for Fertility**  
**Great All Rounder**

Pedigree					
<b>Sire</b>	Silverforest Katman				
<b>Dam</b>	Cillwalsh Weary 13				
Dam Yields	Milk Kgs	Fat Kgs	Ptn Kgs	Fat%	Ptn %
5 Lact Av	6401	286	249	4.45	3.88
4th Lact	7054	347	273	4.91	3.87
<b>MGS</b>	Waterwheel Tarus				
<b>MGD</b>	Cillwalsh MTZ Weary				
7 Lact Avg	6835	286	263	4.18	3.85
5th Lact	7711	318	304	4.12	3.94
<b>3rd Dam</b>	Cullwalsh UYC Weary				
2 Lact Avg	6492	240	235	3.70	3.61

IRISH PRODUCTION	
ICBF	January 2022
Production Rel. 78%	EBI Rel. 58%
<b>Milk Kg</b>	<b>+31</b>
<b>Fat Kg</b>	<b>+13</b>
<b>Fat %</b>	<b>+0.21</b>
<b>Protein Kg</b>	<b>+10</b>
<b>Protein %</b>	<b>+0.15</b>
<b>EBI</b>	<b>€272</b>
<b>Milk SI</b>	<b>€82</b>
<b>Fertility SI</b>	<b>€125</b>
<b>Calving SI</b>	<b>€42</b>
<b>Beef SI</b>	<b>-€7</b>
<b>Maintenance SI</b>	<b>€14</b>
<b>Management SI</b>	<b>€1</b>
<b>Health SI</b>	<b>€15</b>
Genomic Young Sire	

UK HOLSTEIN PRODUCTION			
AHDB Dairy 12/21	Production Rel. 64%		
SCI	£379	ACI	£441
Milk Kg	-8	SCI/ACI Rel.	60%
Fat Kg	+10.9	Fat %	+0.22
Protein Kg	+8.6	Protein %	+0.18
Genomic Young Sire			

Dam: Rochemount HDJ  
Marion 2830



**Double Digit Fat and Protein Percentages**  
**+1.70 Chest Width**  
**Positive for Teat Length**

Pedigree					
<b>Sire</b>	Rossbane Niall				
<b>Dam</b>	Rochemount HDJ Marion 2830				
Dam Yields	Milk Kgs	Fat Kgs	Ptn Kgs	Fat%	Ptn %
3 Lact Av	6632	299	254	4.50	3.82
3rd Lact	7512	348	287	4.63	3.82
<b>MGS</b>	Bridestream Harold				
<b>MGD</b>	Rochemount PSZ Marion 2535 GP82				
6 Lact Avg	6060	289	230	4.79	3.81
5th Lact	6825	317	264	4.64	3.86
<b>3rd Dam</b>	Rochemount WUH Marion 1919				
8 Lact Avg	7678	295	265	4.28	3.45

**IRISH PRODUCTION**

ICBF	January 2022
Production Rel. 75%	EBI Rel. 55%
<b>Milk Kg</b>	<b>+56</b>
<b>Fat Kg</b>	<b>+18</b>
<b>Fat %</b>	<b>+0.27</b>
<b>Protein Kg</b>	<b>+15</b>
<b>Protein %</b>	<b>+0.22</b>
<b>EBI</b>	<b>€336</b>
<b>Milk SI</b>	<b>€118</b>
<b>Fertility SI</b>	<b>€164</b>
<b>Calving SI</b>	<b>€52</b>
<b>Beef SI</b>	<b>-€17</b>
<b>Maintenance SI</b>	<b>€6</b>
<b>Management SI</b>	<b>€5</b>
<b>Health SI</b>	<b>€7</b>
Genomic Young Sire	

**UK Conv. HOLSTEIN PRODUCTION**  
AHDB Dairy 12/21

Milk Kg	-533	Prod. Rel.	60%
Fat Kg	+3.8	Fat %	+0.33
Protein Kg	+3.4	Protein %	+0.27
Genomic Young Sire			

**GOOGLE 3**

Barrowvale Google 3



Dam: Barrowvale Dheaty 76 GP83

**Double Digit Fat and Protein Percentages**  
**+1.70 Chest Width**  
**Positive for Teat Length**

Pedigree					
<b>Sire</b>	Manorpark Google				
<b>Dam</b>	Barrowvale Dheaty 76 GP83				
Dam Yields	Milk Kgs	Fat Kgs	Ptn Kgs	Fat%	Ptn %
3 Lact Av	7278	310	268	4.27	3.67
2nd Lact	7828	325	299	4.15	3.67
<b>MGS</b>	Catlane Chad				
<b>MGD</b>	Barrowvale Dheaty 62 EX91 2E x JRB				
5 Lact Avg	7345	357	283	4.93	3.89
4th Lact	8125	408	316	5.03	3.89
<b>3rd Dam</b>	Barrowvale Dheaty 56 VG88 x VML				
2 Lact Avg	6110	264	226	4.32	3.70

**IRISH PRODUCTION**

ICBF	January 2022
Production Rel. 76%	EBI Rel. 56%
<b>Milk Kg</b>	<b>-5</b>
<b>Fat Kg</b>	<b>+9</b>
<b>Fat %</b>	<b>+0.16</b>
<b>Protein Kg</b>	<b>+6</b>
<b>Protein %</b>	<b>+0.11</b>
<b>EBI</b>	<b>€220</b>
<b>Milk SI</b>	<b>€54</b>
<b>Fertility SI</b>	<b>€108</b>
<b>Calving SI</b>	<b>€52</b>
<b>Beef SI</b>	<b>-€15</b>
<b>Maintenance SI</b>	<b>€18</b>
<b>Management SI</b>	<b>€1</b>
<b>Health SI</b>	<b>€3</b>
Genomic Young Sire	

**UK Conv. FRIESIAN PRODUCTION**  
AHDB Dairy 12/21

Milk Kg	+232	Prod. Rel.	61%
Fat Kg	+20.6	Fat %	+0.14
Protein Kg	+17.3	Protein %	+0.14
Genomic Young Sire			

# BILL 3

Firoda Bill 3



HB No 46 141518921049 Source Ireland  
97% Friesian, 3% Holstein DOB 24.02.20



IRISH PRODUCTION	
ICBF	August 2021
Production Rel. 67%	EBI Rel. 51%
<b>Milk Kg</b>	<b>+43</b>
<b>Fat Kg</b>	<b>+8</b>
<b>Fat %</b>	<b>+0.12</b>
<b>Protein Kg</b>	<b>+8</b>
<b>Protein %</b>	<b>+0.11</b>
<b>EBI</b>	<b>€199</b>
<b>Milk SI</b>	<b>€60</b>
<b>Fertility SI</b>	<b>€118</b>
<b>Calving SI</b>	<b>€28</b>
<b>Beef SI</b>	<b>-€16</b>
<b>Maintenance SI</b>	<b>€7</b>
<b>Management SI</b>	<b>€7</b>
<b>Health SI</b>	<b>€4</b>
<i>Genomic Young Sire</i>	

**Exceptional bull from the Firoda Judie line**  
**Beautiful strong British Friesian Type**  
**Plus for milk with exceptional solids**

Pedigree					
<b>Sire</b>	<b>Firoda Jubilaris 11</b>				
<b>Dam</b>	<b>Firoda PZI Judie VG87</b>				
Dam Yields	Milk Kgs	Fat Kgs	Ptn Kgs	Fat%	Ptn %
5 Lact Avg	8004	327	297	4.09	3.70
3rd Lact	8565	349	324	4.08	3.78
<b>MGS</b>	<b>Piet Adema 186</b>				
<b>MGD</b>	<b>Firoda DVT Judie VG88</b>				
4 Lact Avg	719	271	263	3.81	3.68
4th Lact	8151	307	308	3.76	3.78
<b>3rd Dam</b>	<b>Firoda DDY Judie VG89</b>				
8 Lact Avg	7804	280	269	3.58	3.45

UK Conv. FRIESIAN PRODUCTION			
AHDB Dairy 12/21			
Milk Kg	+303	Prod. Rel.	57%
Fat Kg	+19.4	Fat %	+0.09
Protein Kg	+19.6	Protein %	+0.13
<i>Genomic Young Sire</i>			

# RELIABLE

Lemonstown Reliable ET BLF CNF DPF HH1T HH3T HL



HB No IE211116941834 Source Ireland  
56% Friesian, 44% Holstein DOB 23.01.16



IRISH PRODUCTION	
ICBF	January 2022
Production Rel. 95%	EBI Rel. 81%
<b>Milk Kg</b>	<b>+129</b>
<b>Fat Kg</b>	<b>+12</b>
<b>Fat %</b>	<b>+0.12</b>
<b>Protein Kg</b>	<b>+10</b>
<b>Protein %</b>	<b>+0.12</b>
<b>EBI</b>	<b>€218</b>
<b>Milk SI</b>	<b>€73</b>
<b>Fertility SI</b>	<b>€105</b>
<b>Calving SI</b>	<b>€32</b>
<b>Beef SI</b>	<b>-€11</b>
<b>Maintenance SI</b>	<b>€9</b>
<b>Management SI</b>	<b>-€5</b>
<b>Health SI</b>	<b>€15</b>
<i>Daughter Proven - 117 Dtrs / 48 Herds</i>	

**Exceptional Friesian maternal line**  
**Great Fertility and Longevity**  
**Consistent breeding cow family**  
**56% Friesian, 44% Holstein**

Pedigree					
<b>Sire</b>	<b>Longview Reliable</b>				
<b>Dam</b>	<b>Lemonstown Mountain Bee 2</b>				
Dam Yields	Milk Kgs	Fat Kgs	Ptn Kgs	Fat%	Ptn %
9 Lact Av	7015	359	284	4.50	3.58
6th Lact	8857	403	315	4.55	3.56
<b>MGS</b>	<b>Mountain Gronemanhoeve 2</b>				
<b>MGD</b>	<b>Lemonstown Cameron Bee</b>				
3 Lact Avg	6842	303	246	4.43	3.60
2nd Lact	7223	328	258	4.54	3.57
<b>3rd Dam</b>	<b>Lemonstown FKA Bee</b>				
7 Lact Avg	6682	259	229	3.89	3.43

UK Conv. FRIESIAN PRODUCTION			
AHDB Dairy 12/21			
Milk Kg	+430	Prod. Rel.	76%
Fat Kg	+24.0	Fat %	+0.08
Protein Kg	+21.9	Protein %	+0.11
<i>Genomic Young Sire</i>			