

Dairy Sires 2018



Jane Steel

Northern Irish Milking Troy Daughters

*Breeding for
Profit*



Ai SERVICES
- NORTHERN IRELAND -

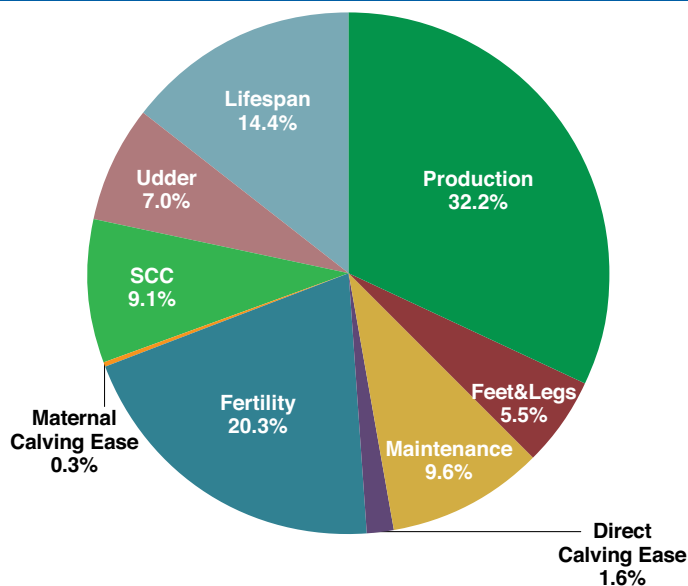
Key Elements of Dairy Evaluations

Profitable Lifetime Index: £PLI

The £PLI is a within breed genetic index* developed specifically for UK dairy farmers. The £PLI value represents the additional profit a high £PLI bull is expected to return from each of its milking daughters over her lifetime compared to an average bull of £0 PLI.

The index has been developed to provide an initial screen tool to ensure bulls used on farm meet specific criteria. It is then recommended specific emphasis is placed on the management traits that require attention on individual farms. The main updates introduced in 2015 are shown below.

Relative weighting of traits within £PLI



Management Trait Details

Fertility Index

A bull with an above average Fertility Index will breed cows with improved calving intervals and better non-return levels. As a rough guideline, every point increase in Fertility Index will decrease calving interval by half a day and improve non return rates by 0.5%. The range in Fertility Index is roughly from +15 to -15 with an average for available Holsteins of -0.5.

Lifespan

Lifespan PTAs present the opportunity to select animals for longer herd life. A bull with a PTA of +0.5 lactations is predicted to pass on to a daughter an extra half a lactation. A bull with a PTA of -0.5 lactations is predicted to pass on a reduction of 0.5 lactations.

Somatic Cell Count

Somatic cell count PTAs are expressed as a percentage and generally fall within the range of +40 to -40. For every 1% in a bull's SCC PTA, a change of 1% in his daughters' SCC is predicted. For example, daughters of a bull with a -10% SCC are expected to have cell counts 10% lower than daughters of a bull with a SCC PTA of zero. So, negative figures for SCC PTAs are desirable as these indicate a reduction in cell counts. Due to the strong link between SCC and mastitis, SCC can also be used as a selection tool to reduce mastitis incidence.

TB Advantage

The TB Advantage index indicates the degree of resistance to bTB a bull is predicted to pass on to his offspring and is expressed on a scale which typically runs from -3 to +3 and as for most other traits, positive values are desired. For every +1 point in the index, 1% fewer daughters re expected to become infected during a TB breakdown.

Mastitis PTA

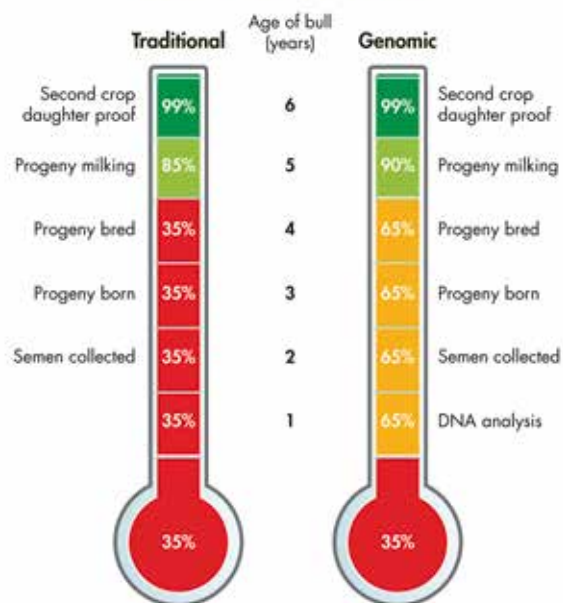
The Mastitis PTA is published on a scale ranging roughly from -5 to +5 and is expressed as a percentage. Similar to SCC, negative values are favourable for mastitis. This means that for every percent decrease in a bull's Mastitis PTA there will be a corresponding one percent decrease in his daughters' mastitis cases. This translates into, on average, 10 fewer cows with mastitis per year in a herd of 100 cows if a -5 mastitis bull is used instead of a +5 mastitis bull.

Genomic Technology

Genomic Technology

- Genomic selection is based on the measurement of an animal's DNA which can be taken from almost any cell of its body.
- The measurement reveals a pattern of DNA markers or SNPs (pronounced 'snips').
- By comparing SNPs with animal performance for thousands of animals, links between genomics and actual performance have emerged.
- These associations enable geneticists to produce a type of genomic Predicted Transmitting Ability (PTA).
- Genomic PTAs can be produced for animals of any age, but are particularly relevant for young animals without any other performance or progeny information.
- Genomic PTAs are likely to have reliabilities of around 40 - 60 percent on the UK scale, which is higher than a Pedigree Index based on parent average, but lower than a widespread progeny proof.
- Breeding companies will currently continue to progeny test bulls by conventional means, but they will be able to select these bulls more accurately.
- DairyCo breeding+ and Holstein UK will closely monitor the success of the technology and issue advice based on an evolving knowledge.
- Always check that the source of figures is DairyCo breeding+ and Holstein UK which will give you assurance of an independent quality assessment of bulls.

Reliabilities over time for traditional and genomic evaluations for bulls



Holstein Sires PTA 2015 (08/17)

Bull Name	PLI	Milk Kg	Fat Kg	Fat %	Protein Kg	Protein %	Combined Fat and Protein Kg	Pedigree	Page
Abel ♦	£597	+537	+28.9	+0.09	+20.0	+0.03	+48.9	Jerod X Mogul	5
Aftershock ♦	£537	+965	+33.5	-0.05	+30.5	-0.01	+64.0	Galaxy X Bookem	6
Ambassador ♦	£678	+735	+27.6	-0.02	+29.1	+0.06	+56.7	Troy X Supersire	7
Barbarossa	£685	+698	+37.5	+0.12	+30.1	+0.09	+67.6	Balisto X Brewmaster	8
Black Jack	£669	+673	+31.6	+0.06	+24.6	+0.03	+56.2	Supershot X Numero Uno	9
Born P	£705	+553	+33.9	+0.10	+27.1	+0.11	+61.0	Battlecry X Aiko	10
Bretagne	£599	+597	+29.9	+0.08	+22.7	+0.04	+52.6	Brekem X Dakker	11
Brook ♦	£791	+507	+40.4	+0.20	+24.4	+0.10	+64.8	Balisto X Denim	12
Clown ♦♦	£634	+565	+34.0	+0.14	+25.2	+0.08	+59.2	Mogul X Lavaman	13
Cover	£634	+565	+34.0	+0.14	+25.2	+0.08	+59.2	Commander X Supersire	14
Finder	£596	+429	+24.8	+0.10	+19.4	+0.07	+44.2	Balisto X Epic	15
Hotline ♦	£601	+792	+37.8	+0.08	+28.7	+0.03	+66.5	AltaHotrod X Mogul	16
Instead	£631	+463	+34.0	+0.19	+24.3	+0.11	+58.3	Supersire X Vosac Man	17
Lancaster	£751	+635	+29.6	+0.05	+22.9	+0.03	+52.5	Penmanship X Shamrock	18
Levis ♦	£558	+420	+18.1	+0.02	+19.9	+0.08	+38.0	Mardi Gras X Epic	19
Massey ♦	£366	+477	+16.9	-0.02	+17.9	+0.03	+34.8	Mascol X Bret	20
Matisse	£410	+308	+27.9	+0.20	+11.4	+0.02	+39.3	Magenta X Snowman	21
Omen	£588	+130	+18.7	+0.17	+19.6	+0.19	+38.3	O-Man X Goldwyn	22
Ranger ♦	£633	+596	+32.9	+0.10	+25.9	+0.08	+58.8	Reflector X Snowfever	23
Recoil	£713	+674	+24.9	+0.00	+26.3	+0.05	+51.2	AltaSpring X Jacey	24
Topshot	£740	+994	+41.2	+0.00	+35.0	+0.03	+76.2	Supershot X AltaEmbassy	25
Troy	£545	+483	+17.4	-0.02	+16.8	+0.01	+34.2	Mogul X Freddie	26
Whatsapp	£599	+479	+24.1	+0.06	+19.4	+0.05	+43.5	Supersire X Superstition	27
Cabriolet ♦♦	£596	+655	+33.8	+0.09	+22.8	+0.02	+56.6	Robust X Planet	28
Tuffy ♦♦	£565	+586	+27.3	+0.05	+21.3	+0.03	+48.6	Numero Uno X Colby	28

♦ Sexed Semen Available

♦♦ Sexed Semen Only

Contents

Red Holstein Sires	29
EBI Sires	31
Friesian	33
Ayrshire	34
Montbelliarde	36
Jersey	38

Dairy Shorthorn	39
Danish Red	39
Fleckvieh	40
Brown Swiss	41
Normandy	41
Beef for the Dairy Herd	42
Fertility Boost	43

Cover Photo: Left to right, Northern Irish Troy daughters owned by Mark Truesdale, H Patton & Sons and Geoffrey Patton.

Whilst every effort has been made to ensure the accuracy of all information contained in this catalogue, AI Services (NI) Ltd. accepts no responsibility whatsoever for any error, and without prejudice do not accept any liability for loss which may result from any error. AI Services abides by the DairyCo and Holstein UK established Code of Advertising.

A *i Services presents the Top 10 Rankings for the Holstein Sires in this Catalogue. It is recommended you use the sire rankings only as a guide in your selections.*

PLI		
1	Brook	£791
2	Lancaster	£751
3	Topshot	£740
4	Recoil	£713
5	Born P	£705
6	Barbarossa	£685
7	Ambassador	£678
8	Black Jack	£669
9	Clown	£634
10	Ranger	£633

Milk Kgs		
1	Topshot	+994
2	Aftershock	+965
3	Hotline	+792
4	Cover	+772
5	Ambassador	+735
6	Barbarossa	+698
7	Recoil	+674
8	Black Jack	+673
9	Cabriole	+655
10	Lancaster	+635

Fat + Protein Kgs		
1	Topshot	+76.2
2	Barbarossa	+67.6
3	Hotline	+66.5
4	Cover	+66.2
5	Brook	+64.8
6	Aftershock	+64.0
7	Born P	+61.0
8	Clown	+59.2
9	Ranger	+58.8
10	Instead	+58.3

Fat %		
1	Brook	+0.20
2	Matisse	+0.20
3	Instead	+0.19
4	Omen	+0.17
5	Clown	+0.14
6	Barbarossa	+0.12
7	Cover	+0.11
8	Born P	+0.10
9	Ranger	+0.10
10	Finder	+0.10

Protein %		
1	Omen	+0.19
2	Instead	+0.11
3	Born P	+0.11
4	Brook	+0.10
5	Barbarossa	+0.09
6	Clown	+0.08
7	Ranger	+0.08
8	Levis	+0.08
9	Finder	+0.07
10	Ambassador	+0.06

Direct Calving Ease		
1	Whatsapp	+1.8
2	Ambassador	+1.4
3	Cabriole	+1.4
4	Brook	+1.1
5	Lancaster	+1.0
6	Instead	+0.9
7	Ranger	+0.8
8	Finder	+0.7
9	Cover	+0.6
10	Omen	+0.6

Type Merit		
1	Hotline	+3.09
2	Recoil	+2.68
3	Bretagne	+2.50
4	Ranger	+2.36
5	Abel	+2.25
6	Matisse	+1.91
7	Troy	+1.84
8	Black Jack	+1.79
9	Whatsapp	+1.77
10	Cover	+1.77

Fertility		
1	Lancaster	+17.1
2	Recoil	+12.2
3	Troy	+11.3
4	Levis	+11.0
5	Tuffy	+10.9
6	Abel	+9.5
7	Whatsapp	+9.3
8	Black Jack	+9.0
9	Ambassador	+9.0
10	Brook	+8.8

Mammary		
1	Hotline	+2.88
2	Bretagne	+2.42
3	Recoil	+2.41
4	Abel	+2.02
5	Ranger	+1.95
6	Matisse	+1.71
7	Black Jack	+1.68
8	Aftershock	+1.66
9	Massey	+1.59
10	Lancaster	+1.52

Feet & Legs		
1	Ranger	+2.23
2	Hotline	+2.15
3	Recoil	+2.09
4	Troy	+1.70
5	Aftershock	+1.58
6	Levis	+1.57
7	Abel	+1.55
8	Whatsapp	+1.53
9	Cover	+1.51
10	Clown	+1.51

Somatic Cell Count		
1	Brook	-36
2	Finder	-27
3	Born P	-24
4	Barbarossa	-23
5	Black Jack	-20
6	Matisse	-20
7	Tuffy	-20
8	Massey	-20
9	Instead	-19
10	Whatsapp	-17

Lifespan		
1	Lancaster	+0.7
2	Brook	+0.7
3	Born P	+0.7
4	Finder	+0.7
5	Recoil	+0.6
6	Troy	+0.6
7	Levis	+0.6
8	Whatsapp	+0.6
9	Black Jack	+0.6
10	Ambassador	+0.6

Assessing Inbreeding

A degree of inbreeding always occurs when animals related to one another are mated as a result of a concentration of the same genes. See table to the right for Inbreeding Levels.

Rule of Thumb

Commercial producers should avoid matings leading to an inbreeding level of greater than 6.25%.



Mating

Inbreeding %

Sire/Daughter	25%
Full brother/Full sister	25%
Half brother/Half sister	12.5%
Grandsire/Grand-daughter	12.5%
Grandson/Grand-dam	12.5%
Uncle/Niece	6.25%
Son/Grand-daughter	6.25%
Daughter/Grandson	6.25%
Full cousins	6.25%
Granson/Grand-daughter	3.13%
Half cousins	3.13%



Dam: OCD Mogul Abracadabra ET

Holstein Genomic Production Proof	
DairyCo Breeding+	PTA 2015 (08/17)
PLI	£597
Milk Kg	+537
Fat Kg	+28.9
Fat %	+0.09
Protein Kg	+20.0
Protein %	+0.03
Reliability	65%

Young Genomic Pedigree Index

Highlights

- Over 2 points on Type and Udders
- Massive Daughter Fertility at +9.5
- Improves all Management Traits
- Superb All Round Sire for Production and Components



MANAGEMENT	
Fertility Index	+9.5 Above Average
Lifespan	+0.5 Above Average
Somatic Cell Count	-15 Improver
TB Advantage	+0.8 Improver
Direct Calving Ease	-0.1 Suitable for Heifers
Mastitis Resistance	-2 Improver

YOUNG GENOMIC PEDIGREE INDEX		Holstein UK & Ireland 08/17
Type Merit	+2.25	Excellent
Mammary	+2.02	Excellent
Legs & Feet	+1.55	Excellent
Stature	+1.46	160 cm
Chest Width	-0.04	Wide
Body Depth	-0.25	Deep
Angularity	+1.18	Open Rib
Rump Angle	+1.07	Low Pins
Rump Width	+0.69	Wide
Rear Leg Side	+0.61	Sickled
Foot Angle	+0.22	Steep
Fore Udder Att	+1.70	Tight
Rear Udder Ht	+1.62	Very High
Udder Support	+1.65	Strong
Udder Depth	+1.77	20cm Above
Front Teat Pl.	+1.83	Close
Teat Length	-0.55	Long
Rear Teat Pl.	+1.51	Close
Teat Pos. Side	+0.39	Apart
Temperament	+1.13	Good
Ease of Milk	+0.44	Fast
Locomotion	+1.75	Excellent

AFTERSHOCK

Sexed Semen Available



HB No: 65000072044165 AI Code: HO3558
 Galaxy X Bookem X Goldwyn Source: USA
 Beta-Casein: A2A2 DOB: 08.06.13

Morningview Aftershock ET



MGDam: Morningview Gold Addition-ET VG88

Holstein Genomic Production Proof	
DairyCo Breeding+	PTA 2015 (08/17)
PLI	£537
Milk Kg	+965
Fat Kg	+33.5
Fat %	-0.05
Protein Kg	+30.5
Protein %	-0.01
Reliability	66%

Young Genomic Pedigree Index

Highlights

- *Aftershock combines massive production with superb type*
- *Ideal sire for high input commercial milk producers*
- *Excellent in all Mammary Traits*
- *A linear that speaks for itself*
- *Excellent in all Management Traits*



Maternal GGD: Morningview Oman Annette-ET VG87

MANAGEMENT

Fertility Index	+3.5	Above Average
Lifespan	+0.4	Above Average
Somatic Cell Count	-4	Improver
TB Advantage	+2.4	Improver
Direct Calving Ease	+0.2	Suitable for Heifers
Mastitis Resistance	+0.0	Improver

YOUNG GENOMIC PEDIGREE INDEX

Holstein UK & Ireland 08/17

Type Merit	+1.90	Excellent
Mammary	+1.66	Excellent
Legs & Feet	+1.58	Excellent
Stature	+1.22	160 cm
Chest Width	+0.90	Wide
Body Depth	+0.63	Deep
Angularity	+1.11	Open Rib
Rump Angle	-1.20	Low Pins
Rump Width	+0.37	Wide
Rear Leg Side	+0.33	Sickled
Foot Angle	+0.62	Steep
Fore Udder Att	+1.26	Tight
Rear Udder Ht	+1.70	Very High
Udder Support	+1.77	Strong
Udder Depth	+0.41	20cm Above
Front Teat Pl.	+1.12	Close
Teat Length	+1.71	Long
Rear Teat Pl.	+1.75	Close
Teat Pos. Side	+0.26	Apart
Temperament	+1.06	Good
Ease of Milk	+0.31	Fast
Locomotion	+1.73	Excellent

AMBASSADOR

Co-Op Troy Ambassador ET



HB No: 65003126539693

Troy X Supersire X Superstition

Beta-Casein: A2A2

AI Code: HO4589

Source: USA

DOB: 11.01.15



Dam: Co-Op Suprsre Apple 7087-ET

Holstein Genomic Production Proof	
DairyCo Breeding+	PTA 2015 (08/17)
PLI	£678
Milk Kg	+735
Fat Kg	+27.6
Fat %	-0.02
Protein Kg	+29.1
Protein %	+0.06
Reliability	67%

Young Genomic Pedigree Index

Highlights

- **Exciting Troy son from Supersire X Superstition**
- **Excellent Milk Production sire, with Components to match**
- **Very good Daughter Fertility with Excellent Lifespan**
- **Calving Ease Sire**



Maternal Sister: Co-Op Morgan Apple 7311

MANAGEMENT	
Fertility Index	+9.0 Above Average
Lifespan	+0.6 Above Average
Somatic Cell Count	-7 Improver
TB Advantage	+1.7 Improver
Direct Calving Ease	+1.4 Suitable for Heifers
Mastitis Resistance	-1 Improver

YOUNG GENOMIC PEDIGREE INDEX		Holstein UK & Ireland 08/17
Type Merit	+1.50	Excellent
Mammary	+1.38	Excellent
Legs & Feet	+0.92	Excellent
Stature	-0.14	160 cm
Chest Width	+0.08	Wide
Body Depth	-0.91	Deep
Angularity	+0.11	Open Rib
Rump Angle	+0.64	Low Pins
Rump Width	-0.03	Wide
Rear Leg Side	-0.62	Sickled
Foot Angle	+0.35	Steep
Fore Udder Att	+1.16	Tight
Rear Udder Ht	+1.02	Very High
Udder Support	+1.08	Strong
Udder Depth	+0.96	20cm Above
Front Teat Pl.	+0.49	Close
Teat Length	-0.48	Long
Rear Teat Pl.	+1.32	Close
Teat Pos. Side	+0.61	Apart
Temperament	+1.08	Good
Ease of Milk	+1.05	Fast
Locomotion	+0.86	Excellent

Holstein Sires

Sexed Holsteins

BARBAROSSA

Barbarossa ET



HB No: 60001603476033

Balisto X Brewmaster X Man-O-Man

AI Code: HO4407

Source: Germany

DOB: 27.12.14



Holstein Genomic Production Proof	
DairyCo Breeding+	PTA 2015 (08/17)
PLI	£685
Milk Kg	+698
Fat Kg	+37.5
Fat %	+0.12
Protein Kg	+30.1
Protein %	+0.09
Reliability	68%

Young Genomic Pedigree Index

Highlights

- Ranks highly in the Top PLI Sires
- Massive Milk Production sire, with over +67 Kgs of Fat and Protein
- Excellent Legs and Feet improvement with very good Locomotion
- Recommended for Robotic Milking Schemes



MANAGEMENT	
Fertility Index	+3.6 Above Average
Lifespan	+0.4 Above Average
Somatic Cell Count	-23 Improver
TB Advantage	+1.4 Improver
Direct Calving Ease	+0.4 Suitable for Heifers
Mastitis Resistance	-3 Improver

YOUNG GENOMIC PEDIGREE INDEX		Holstein UK & Ireland 08/17
Type Merit	+1.23	Excellent
Mammary	+1.07	Excellent
Legs & Feet	+1.32	Excellent
Stature	-0.05	160 cm
Chest Width	+0.34	Wide
Body Depth	+0.59	Deep
Angularity	+1.26	Open Rib
Rump Angle	-1.34	Low Pins
Rump Width	+0.03	Wide
Rear Leg Side	-0.37	Sickled
Foot Angle	+0.76	Steep
Fore Udder Att	+0.86	Tight
Rear Udder Ht	+1.36	Very High
Udder Support	+0.20	Strong
Udder Depth	+0.52	20cm Above
Front Teat Pl.	+0.63	Close
Teat Length	-0.30	Long
Rear Teat Pl.	-0.63	Close
Teat Pos. Side	+0.14	Apart
Temperament	+0.60	Good
Ease of Milk	+0.45	Fast
Locomotion	+1.39	Excellent

BLACK JACK

Co-Op Aardema Black Jack-ET



HB No: 65003129037702
Supershot X Numero Uno X Planet

AI Code: HO4582
Source: USA
DOB: 10.03.15

Holstein Sires



Holstein Genomic Production Proof	
DairyCo Breeding+	PTA 2015 (08/17)
PLI	£669
Milk Kg	+673
Fat Kg	+31.6
Fat %	+0.06
Protein Kg	+24.6
Protein %	+0.03
Reliability	64%

Young Genomic Pedigree Index

Highlights

- **High Ranking PLI sire from a Renowned and Proven cow family**
- **Type Improver, without increasing Stature**
- **Snugly Attached Udders**
- **Excellent in all Management Traits**



MANAGEMENT	
Fertility Index	+9.0 Above Average
Lifespan	+0.6 Above Average
Somatic Cell Count	-20 Improver
TB Advantage	+1.8 Improver
Direct Calving Ease	-0.6 Suitable for Heifers
Mastitis Resistance	-3 Improver

YOUNG GENOMIC PEDIGREE INDEX		Holstein UK & Ireland 08/17
Type Merit	+1.79	Excellent
Mammary	+1.68	Excellent
Legs & Feet	+1.12	Excellent
Stature	+0.19	160 cm
Chest Width	+0.39	Wide
Body Depth	-0.62	Deep
Angularity	+0.03	Open Rib
Rump Angle	+0.18	Low Pins
Rump Width	+1.20	Wide
Rear Leg Side	-0.04	Sickled
Foot Angle	+0.07	Steep
Fore Udder Att	+1.61	Tight
Rear Udder Ht	+1.21	Very High
Udder Support	+0.97	Strong
Udder Depth	+1.19	20cm Above
Front Teat Pl.	+0.73	Close
Teat Length	-0.53	Long
Rear Teat Pl.	+0.97	Close
Teat Pos. Side	+0.48	Apart
Temperament	+0.90	Good
Ease of Milk	+0.32	Fast
Locomotion	+1.17	Excellent

-2

+2

BORN P

Wilder Born P ET



HB No: 60000539063836
 Battlecry X Aiko X Colt
 Beta-Casein: A2A2

AI Code:
 Source: Germany
 DOB: 05.02.16



3 Dam: Kylian Massia 106

Holstein Genomic Production Proof	
DairyCo Breeding+	PTA 2015 (08/17)
PLI	£705
Milk Kg	+553
Fat Kg	+33.9
Fat %	+0.14
Protein Kg	+27.1
Protein %	+0.11
Reliability	63%

Young Genomic Pedigree Index

Highlights

- One of the most complete sires available
- Excellent weights of Fat and Protein with double digit percentages
- Improves Teat Length
- Recommended for Robotic Milking Schemes
- No. 1 Polled PLI Sire



Wilder Born P ET

MANAGEMENT	
Fertility Index	+6.8 Above Average
Lifespan	+0.7 Above Average
Somatic Cell Count	-24 Improver
TB Advantage	+1.2 Improver
Direct Calving Ease	-0.5 Suitable for Heifers
Mastitis Resistance	-4 Improver

YOUNG GENOMIC PEDIGREE INDEX		Holstein UK & Ireland 08/17
Type Merit	+1.42	Excellent
Mammary	+1.11	Excellent
Legs & Feet	+1.23	Excellent
Stature	+1.05	160 cm
Chest Width	+1.10	Wide
Body Depth	+0.11	Deep
Angularity	-0.21	Open Rib
Rump Angle	+0.04	Low Pins
Rump Width	+0.77	Wide
Rear Leg Side	-0.03	Sickled
Foot Angle	+0.90	Steep
Fore Udder Att	+1.14	Tight
Rear Udder Ht	+0.55	Very High
Udder Support	+0.56	Strong
Udder Depth	+1.41	20cm Above
Front Teat Pl.	+0.00	Close
Teat Length	+1.14	Long
Rear Teat Pl.	-0.36	Close
Teat Pos. Side	-0.17	Apart
Temperament	+0.47	Good
Ease of Milk	-0.10	Fast
Locomotion	+1.39	Excellent



Dam: Bosside Appl Demetra-Red ET VG85

Holstein Genomic Production Proof	
DairyCo Breeding+	PTA 2015 (08/17)
PLI	£599
Milk Kg	+597
Fat Kg	+29.9
Fat %	+0.08
Protein Kg	+22.7
Protein %	+0.04
Reliability	65%

Young Genomic Pedigree Index

Highlights

- **An exciting Red and White Sire from the Renowned KHW Regiment Apple Red Cow Family**
- **Excellent Type Merit, with Production to Match**
- **Daughters with Fantastic Udders**
- **Positive in all Health Traits**



4 Dam: KHW Regiment Apple Red ET EX96

MANAGEMENT

Fertility Index	+8.1	Above Average
Lifespan	+0.4	Above Average
Somatic Cell Count	-12	Improver
TB Advantage	+1.1	Improver
Direct Calving Ease	+0.2	Suitable for Heifers
Mastitis Resistance	-2	Improver

YOUNG GENOMIC PEDIGREE INDEX

Holstein UK & Ireland 08/17

Type Merit	+2.50	Excellent
Mammary	+2.42	Excellent
Legs & Feet	+1.30	Excellent
Stature	+1.35	160 cm
Chest Width	-0.46	Wide
Body Depth	-0.68	Deep
Angularity	+0.64	Open Rib
Rump Angle	-0.85	Low Pins
Rump Width	+0.44	Wide
Rear Leg Side	-0.16	Sickled
Foot Angle	+0.74	Steep
Fore Udder Att	+1.95	Tight
Rear Udder Ht	+2.11	Very High
Udder Support	+1.34	Strong
Udder Depth	+2.12	20cm Above
Front Teat Pl.	+0.36	Close
Teat Length	+0.16	Long
Rear Teat Pl.	-0.47	Close
Teat Pos. Side	+0.65	Apart
Temperament	+0.56	Good
Ease of Milk	+0.10	Fast
Locomotion	+1.16	Excellent

BROOK

VH Balisto Brook

Sexed Semen Available



HB No: 6100000258184
Balisto X Denim X Ramos
Beta-Casein: A2A2

AI Code:
Source: Denmark
DOB: 08.03.15



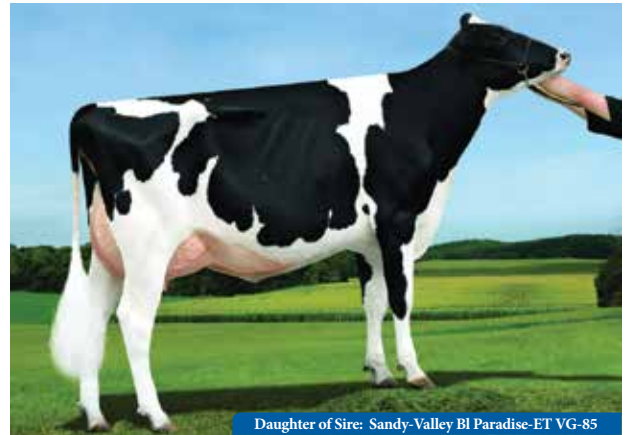
VH Balisto Brook

Holstein Genomic Production Proof	
DairyCo Breeding+	PTA 2015 (08/17)
PLI	£791
Milk Kg	+507
Fat Kg	+40.4
Fat %	+0.24
Protein Kg	+24.4
Protein %	+0.10
Reliability	65%

Young Genomic Pedigree Index

Highlights

- No. 3 in the Top UK PLI Sires
- Massive components with +64.8 Kgs and double digit percentages
- Ideal for Robotic Milking Schemes
- Positive Fertility Index at +8.8
- Positive Lifespan at +0.7 = extra 210 Days Longevity



Daughter of Sire: Sandy-Valley Bl Paradise-ET VG-85

MANAGEMENT	
Fertility Index	+8.8 Above Average
Lifespan	+0.7 Above Average
Somatic Cell Count	-36 Improver
TB Advantage	+1.0 Improver
Direct Calving Ease	+1.1 Suitable for Heifers
Mastitis Resistance	-6 Improver

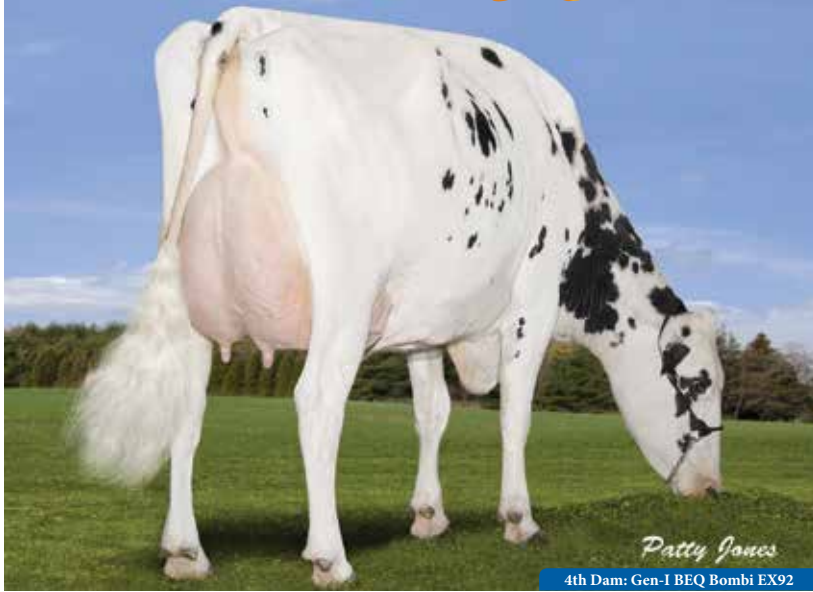
YOUNG GENOMIC PEDIGREE INDEX		Holstein UK & Ireland 08/17
Type Merit	+1.04	Excellent
Mammary	+0.94	Excellent
Legs & Feet	+0.81	Excellent
Stature	+0.03	160 cm
Chest Width	+0.65	Wide
Body Depth	+0.08	Deep
Angularity	+0.50	Open Rib
Rump Angle	+0.24	Low Pins
Rump Width	-0.31	Wide
Rear Leg Side	+0.16	Sickled
Foot Angle	+0.69	Steep
Fore Udder Att	+1.15	Tight
Rear Udder Ht	+0.63	Very High
Udder Support	+0.13	Strong
Udder Depth	+0.84	20cm Above
Front Teat Pl.	+0.57	Close
Teat Length	+0.35	Long
Rear Teat Pl.	-0.96	Close
Teat Pos. Side	-0.40	Apart
Temperament	+0.73	Good
Ease of Milk	+0.15	Fast
Locomotion	+0.88	Excellent

Sexed Semen Only



HB No: 65003013023061
Mogul X Lavaman X Planet

AI Code: HO4214
Source: Holland
DOB: 03.08.13



Holstein Genomic Production Proof	
DairyCo Breeding+	PTA 2015 (08/17)
PLI	£634
Milk Kg	+565
Fat Kg	+34.0
Fat %	+0.14
Protein Kg	+25.2
Protein %	+0.08
Reliability	66%

Young Genomic Pedigree Index

Highlights

- **Strong Robust Cows with Excellent Longevity**
- **Lots of Components in both Kgs and Percentages**
- **Top Bull for Legs and Feet with Excellent Locomotion**
- **Snugly attached Udders**



MANAGEMENT	
Fertility Index	+5.1 Above Average
Lifespan	+0.5 Above Average
Somatic Cell Count	-12 Improver
TB Advantage	+1.0 Improver
Direct Calving Ease	-0.3 Suitable for Heifers
Mastitis Resistance	-1 Improver

YOUNG GENOMIC PEDIGREE INDEX		Holstein UK & Ireland 08/17
Type Merit	+1.42	Excellent
Mammary	+1.19	Excellent
Legs & Feet	+1.51	Excellent
Stature	-0.14	160 cm
Chest Width	+0.38	Wide
Body Depth	+0.45	Deep
Angularity	+0.77	Open Rib
Rump Angle	-0.09	Low Pins
Rump Width	-0.30	Wide
Rear Leg Side	-0.59	Sickled
Foot Angle	+0.26	Steep
Fore Udder Att	+0.83	Tight
Rear Udder Ht	+1.25	Very High
Udder Support	+1.03	Strong
Udder Depth	+0.47	20cm Above
Front Teat Pl.	+1.30	Close
Teat Length	-0.54	Long
Rear Teat Pl.	+0.94	Close
Teat Pos. Side	+0.89	Apart
Temperament	+0.41	Good
Ease of Milk	+0.63	Fast
Locomotion	+2.05	Excellent

COVER

Thurler RUW Cover



HB No: 60000770188609

AI Code: HO4575

Commander X Supersire X Man-O-Man

Source: Germany

Beta-Casein: A2A2

DOB: 22.03.15



Holstein Genomic Production Proof	
DairyCo Breeding+	PTA 2015 (08/17)
PLI	£629
Milk Kg	+772
Fat Kg	+39.8
Fat %	+0.11
Protein Kg	+26.4
Protein %	+0.02
Reliability	64%

Young Genomic Pedigree Index

Highlights

- **Over 700 Kgs of Milk with over +66 Kgs Fat and Protein**
- **High Wide Rear Udders**
- **Improves Teat Length**
- **All Family Members are consistently 90% Black in colour**



MANAGEMENT	
Fertility Index	+5.7 <small>Above Average</small>
Lifespan	+0.4 <small>Above Average</small>
Somatic Cell Count	-15 <small>Improver</small>
TB Advantage	+0.7 <small>Improver</small>
Direct Calving Ease	+0.6 <small>Suitable for Heifers</small>
Mastitis Resistance	-1 <small>Improver</small>

YOUNG GENOMIC PEDIGREE INDEX		Holstein UK & Ireland 08/17
Type Merit	+1.77	Excellent
Mammary	+1.49	Excellent
Legs & Feet	+1.51	Excellent
Stature	+0.85	160 cm
Chest Width	-0.39	Wide
Body Depth	-0.27	Deep
Angularity	+0.92	Open Rib
Rump Angle	+0.63	Low Pins
Rump Width	+0.47	Wide
Rear Leg Side	-0.35	Sickled
Foot Angle	+0.12	Steep
Fore Udder Att	+0.97	Tight
Rear Udder Ht	+1.61	Very High
Udder Support	+0.50	Strong
Udder Depth	+1.29	20cm Above
Front Teat Pl.	+0.64	Close
Teat Length	+0.34	Long
Rear Teat Pl.	+0.39	Close
Teat Pos. Side	+0.24	Apart
Temperament	+1.12	Good
Ease of Milk	+0.85	Fast
Locomotion	+1.50	Excellent



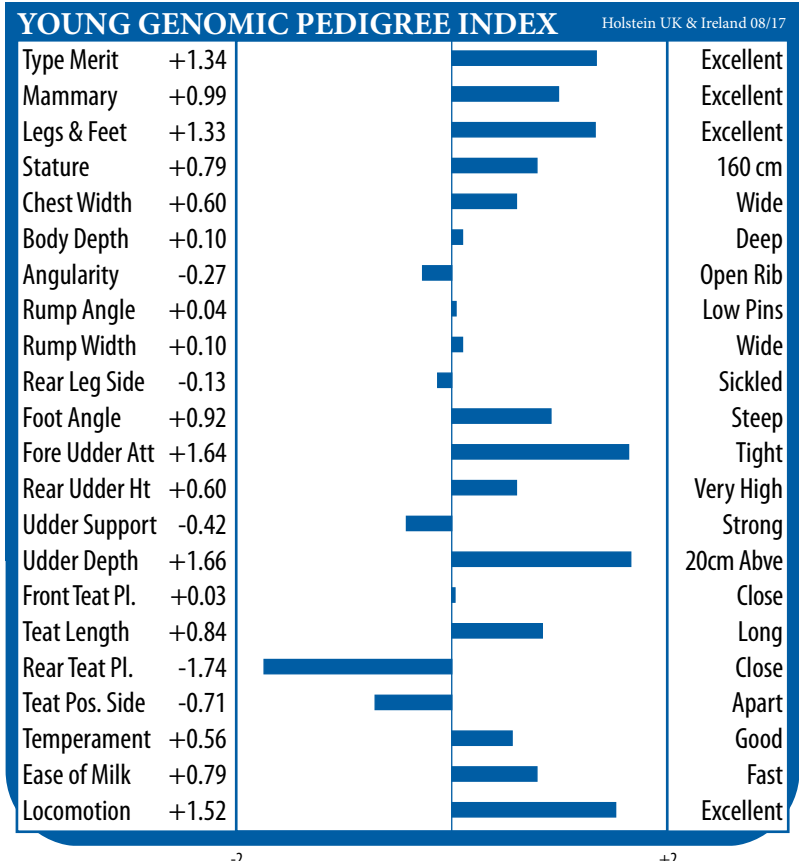
Holstein Genomic Production Proof	
DairyCo Breeding+	PTA 2015 (08/17)
PLI	£596
Milk Kg	+429
Fat Kg	+24.8
Fat %	+0.10
Protein Kg	+19.4
Protein %	+0.07
Reliability	66%
Young Genomic Pedigree Index	

Highlights

- *Suitable as a Calving Ease Sire*
- *Legs and Feet Improvement with excellent Locomotion*
- *Ideal for Robotic Milking Schemes*
- *Strong Robust Cows, negative for Angularity*
- *Impressive Lifespan at +0.7*



MANAGEMENT	
Fertility Index	+6.0 <small>Above Average</small>
Lifespan	+0.7 <small>Above Average</small>
Somatic Cell Count	-27 <small>Improver</small>
TB Advantage	+0.6 <small>Improver</small>
Direct Calving Ease	+0.7 <small>Suitable for Heifers</small>
Mastitis Resistance	-4 <small>Improver</small>



HOTLINE

Sexed Semen Available



HB No: 65003129128855
 Altahotrod X Mogul X Man-o-Man
 Beta-Casein: A2A2

AI Code: HO4635
 Source: Holland
 DOB: 06.07.15

Peak Hotline ET



Maternal Grand Dam: J-Mor Man-O-Man Honey ET

Holstein Genomic Production Proof	
DairyCo Breeding+	PTA 2015 (08/17)
PLI	£601
Milk Kg	+792
Fat Kg	+37.8
Fat %	+0.08
Protein Kg	+28.7
Protein %	+0.03
Reliability	64%

Young Genomic Pedigree Index

Highlights

- *Hotline ranks highly on the Type Rankings*
- *Combines High PLI with Exciting Type Figures*
- *+66 Kgs Combined Fat and Protein*
- *Calving Ease Sire*
- *Outstanding Udders*



Dam: J-Mor Mogul Hostice-ET

MANAGEMENT	
Fertility Index	+3.5 Above Average
Lifespan	+0.3 Above Average
Somatic Cell Count	-16 Improver
TB Advantage	+0.5 Improver
Direct Calving Ease	+0.3 Suitable for Heifers
Mastitis Resistance	-2 Improver

YOUNG GENOMIC PEDIGREE INDEX		Holstein UK & Ireland 08/17
Type Merit	+3.09	Excellent
Mammary	+2.88	Excellent
Legs & Feet	+2.15	Excellent
Stature	+2.35	160 cm
Chest Width	+1.07	Wide
Body Depth	+1.03	Deep
Angularity	+1.67	Open Rib
Rump Angle	-0.32	Low Pins
Rump Width	+1.52	Wide
Rear Leg Side	-0.27	Sickled
Foot Angle	+1.35	Steep
Fore Udder Att	+2.46	Tight
Rear Udder Ht	+2.54	Very High
Udder Support	+2.39	Strong
Udder Depth	+1.89	20cm Above
Front Teat Pl.	+2.36	Close
Teat Length	-1.41	Long
Rear Teat Pl.	+2.33	Close
Teat Pos. Side	+0.74	Apart
Temperament	+0.85	Good
Ease of Milk	+0.74	Fast
Locomotion	+2.16	Excellent



Dam: Gracieuse

Holstein Genomic Production Proof	
DairyCo Breeding+	PTA 2015 (08/17)
PLI	£631
Milk Kg	+463
Fat Kg	+34.0
Fat %	+0.19
Protein Kg	+24.3
Protein %	+0.11
Reliability	65%

Young Genomic Pedigree Index

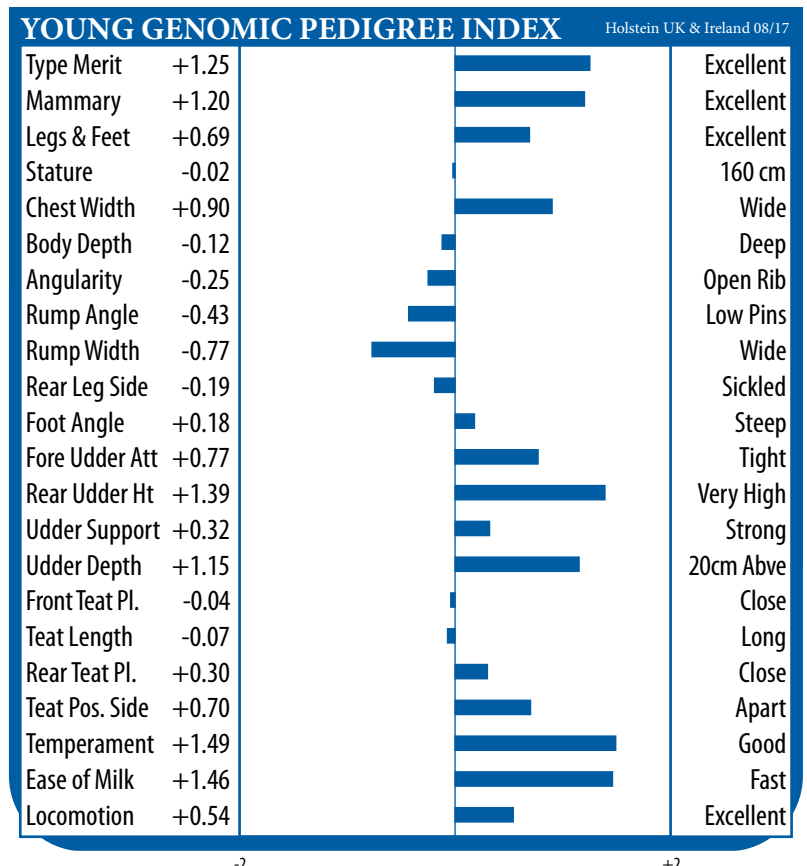
Highlights

- *Extremely high component specialist*
- *Positive in all the management traits*
- *Improves udders, especially rear udder height*
- *Reduces Size and Angularity*
- *Calving ease, suitable for heifers*



Instead

MANAGEMENT	
Fertility Index	+4.4 Above Average
Lifespan	+0.5 Above Average
Somatic Cell Count	-19 Improver
TB Advantage	+1.4 Improver
Direct Calving Ease	+0.9 Suitable for Heifers
Mastitis Resistance	-3 Improver



LANCASTER

Prehen Lancaster ET



HB No: 01954082142776
Penmanship X Shamrock X Garrett

AI Code: HO4836
Source: N Ireland
DOB: 05.06.16



Dam: Prehen Shamrock Lady ET VG85

Holstein Genomic Production Proof	
DairyCo Breeding+	PTA 2015 (08/17)
PLI	£751
Milk Kg	+635
Fat Kg	+29.6
Fat %	+0.05
Protein Kg	+22.9
Protein %	+0.03
Reliability	64%

Young Genomic Pedigree Index

Highlights

- **Tremendous Daughter Fertility at +17.1**
- **Top Ranking Sire in the UK PLI List August 2017**
- **Great Production with Positive Components**
- **Outstanding Health and Management Traits**
- **Locally bred from the renown Prehen Herd**



Full Sister: Prehen Penmanship Lady 3 ET

MANAGEMENT	
Fertility Index	+17.1 Above Average
Lifespan	+0.7 Above Average
Somatic Cell Count	-13 Improver
TB Advantage	+1.2 Improver
Direct Calving Ease	+1.0 Suitable for Heifers
Mastitis Resistance	-1 Improver

YOUNG GENOMIC PEDIGREE INDEX		Holstein UK & Ireland 08/17
Type Merit	+1.69	Excellent
Mammary	+1.52	Excellent
Legs & Feet	+0.98	Excellent
Stature	+0.18	160 cm
Chest Width	-0.65	Wide
Body Depth	-1.52	Deep
Angularity	-0.19	Open Rib
Rump Angle	+0.48	Low Pins
Rump Width	+0.44	Wide
Rear Leg Side	+0.05	Sickled
Foot Angle	+0.05	Steep
Fore Udder Att	+0.93	Tight
Rear Udder Ht	+1.05	Very High
Udder Support	+1.24	Strong
Udder Depth	+1.60	20cm Above
Front Teat Pl.	+1.23	Close
Teat Length	-0.92	Long
Rear Teat Pl.	+1.26	Close
Teat Pos. Side	+0.15	Apart
Temperament	+0.27	Good
Ease of Milk	+0.66	Fast
Locomotion	+1.02	Excellent

Levis



Dam: Helens

Holstein Genomic Production Proof	
DairyCo Breeding+	PTA 2015 (08/17)
PLI	£558
Milk Kg	+420
Fat Kg	+18.1
Fat %	+0.02
Protein Kg	+19.9
Protein %	+0.08
Reliability	64%

Young Genomic Pedigree Index

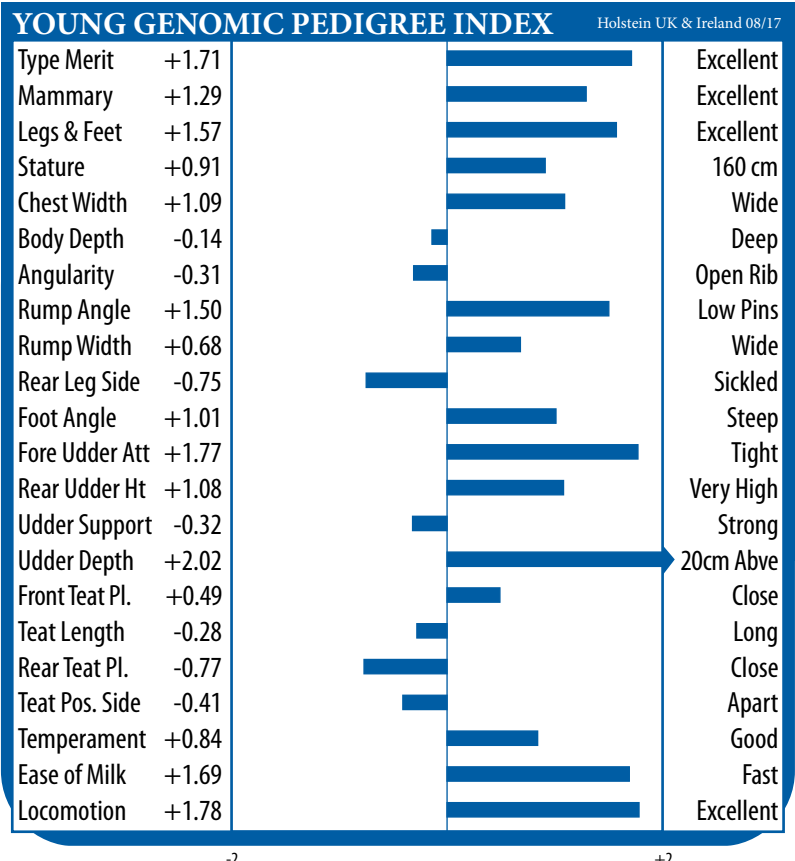
Highlights

- *Levis combines Production, Type and Management Traits all in one Package*
- *Strong Chests with wide Rumps and negative Angularity*
- *Snugly Attached Udders*
- *Ideal for Robotic Milking Schemes*



HS to Dam: OConnors Epic Lonesome

MANAGEMENT	
Fertility Index	+11.0 Above Average
Lifespan	+0.6 Above Average
Somatic Cell Count	-6 Improver
TB Advantage	+1.1 Improver
Direct Calving Ease	+0.6 Suitable for Heifers
Mastitis Resistance	-1 Improver





Daughter: Ards Massey Mae VG87, bred by H Patton & Sons

Holstein Interbull Production Proof	
DairyCo Breeding+	PTA 2015 (08/17)
PLI	£366
Milk Kg	+477
Fat Kg	+16.9
Fat %	-0.02
Protein Kg	+17.9
Protein %	+0.03
Reliability	96%
UK Daughters	495
UK Herds	123

Daughter Proven

Highlights

- One of the best daughter proven sires available
- Ideal sire for commercial milk producers; no nonsense cows
- Tremendous farmer satisfaction with 495 daughters in 123 UK herds
- Excellent health traits, i.e. longevity
- Average stature cows with strong chest width and wide rumps



Ards Massey Lou Ella VG87, bred by H Patton & Sons

MANAGEMENT	
Fertility Index	-0.1 Above Average
Lifespan	+0.4 Above Average
Somatic Cell Count	-20 Improver
TB Advantage	-1.5 Improver
Direct Calving Ease	+0.2 Suitable for Heifers
Mastitis Resistance	-2 Improver

YOUNG GENOMIC PEDIGREE INDEX		Holstein UK & Ireland 08/17
Type Merit	+1.40	Excellent
Mammary	+1.59	Excellent
Legs & Feet	+0.44	Excellent
Stature	-0.01	160 cm
Chest Width	+1.94	Wide
Body Depth	+0.51	Deep
Angularity	+0.04	Open Rib
Rump Angle	-1.73	Low Pins
Rump Width	+1.35	Wide
Rear Leg Side	-0.32	Sickled
Foot Angle	++0.10	Steep
Fore Udder Att	+1.58	Tight
Rear Udder Ht	+0.94	Very High
Udder Support	+0.73	Strong
Udder Depth	+1.24	20cm Above
Front Teat Pl.	+1.92	Close
Teat Length	-0.83	Long
Rear Teat Pl.	+1.08	Close
Teat Pos. Side	-0.25	Apart
Temperament	+1.06	Good
Ease of Milk	+0.73	Fast
Locomotion	+0.14	Excellent



MGD: KHW-I Aika Baxter RDC VG89

Holstein Genomic Production Proof	
DairyCo Breeding+	PTA 2015 (08/17)
PLI	£410
Milk Kg	+308
Fat Kg	+27.9
Fat %	+0.19
Protein Kg	+11.4
Protein %	+0.02
Reliability	68%

Young Genomic Pedigree Index

Highlights

- **Tremendous Body Capacity with Wide Rumps**
- **High Wide Rear Udders with excellent Udder Support**
- **Improves Heel Depth and Locomotion**
- **Excels in SCC and Lifespan**



Gen-I-BEQ RUW Matisse Red

MANAGEMENT

Fertility Index	+1.5	Above Average
Lifespan	+0.5	Above Average
Somatic Cell Count	-20	Improver
TB Advantage	+0.5	Improver
Direct Calving Ease	-0.2	Suitable for Heifers
Mastitis Resistance	-4	Improver

YOUNG GENOMIC PEDIGREE INDEX

Holstein UK & Ireland 08/17

Type Merit	+1.91	Excellent
Mammary	+1.71	Excellent
Legs & Feet	+1.38	Excellent
Stature	+1.49	160 cm
Chest Width	+0.90	Wide
Body Depth	+0.72	Deep
Angularity	+0.30	Open Rib
Rump Angle	+0.87	Low Pins
Rump Width	+0.66	Wide
Rear Leg Side	-1.22	Sickled
Foot Angle	+2.11	Steep
Fore Udder Att	+1.35	Tight
Rear Udder Ht	+1.07	Very High
Udder Support	+1.33	Strong
Udder Depth	+1.90	20cm Above
Front Teat Pl.	+0.92	Close
Teat Length	-0.46	Long
Rear Teat Pl.	+0.99	Close
Teat Pos. Side	+0.38	Apart
Temperament	+0.89	Good
Ease of Milk	+0.86	Fast
Locomotion	+1.22	Excellent

OMEN

Prehen Omen ET EX94



HB No: 01000000644841
O-Man X Goldwyn X Novalis

AI Code: HO3359
Source: N Ireland
DOB: 11.04.09



Daughters: Relough Omen Roxie 4 EX90 and Relough Omen Danna 4 VG88, bred by R McClean & Sons

Holstein Interbull Production Proof	
DairyCo Breeding+	PTA 2015 (08/17)
PLI	£588
Milk Kg	+130
Fat Kg	+18.7
Fat %	+0.17
Protein Kg	+19.6
Protein %	+0.19
Reliability	92%
UK Daughters	268
UK Herds	63

Daughter Proven

Highlights

- **No. 1 UK Daughter Proven Sire for the past three years**
- **Bred in Northern Ireland, proven in Northern Ireland**
- **Excellent production with massive improvement in components**
- **Strong robust cows with tremendous daughter fertility**
- **Improves legs and feet with good locomotion**



Relough Omen Sarah EX91(2), bred by R McClean & Sons

MANAGEMENT

Fertility Index	+6.8	Above Average
Lifespan	+0.5	Above Average
Somatic Cell Count	-12	Improver
TB Advantage	+1.9	Improver
Direct Calving Ease	+0.6	Suitable for Heifers
Mastitis Resistance	-1	Improver

DAUGHTER CONFORMATION

Holstein UK & Ireland 08/17

Type Merit	+0.91	Excellent
Mammary	+0.89	Excellent
Legs & Feet	+0.73	Excellent
Stature	-1.36	160 cm
Chest Width	+1.10	Wide
Body Depth	+0.09	Deep
Angularity	-0.77	Open Rib
Rump Angle	-0.37	Low Pins
Rump Width	-0.75	Wide
Rear Leg Side	-0.54	Sickled
Foot Angle	+0.29	Steep
Fore Udder Att	+0.28	Tight
Rear Udder Ht	+0.49	Very High
Udder Support	+0.50	Strong
Udder Depth	+0.58	20cm Above
Front Teat Pl.	+0.00	Close
Teat Length	-0.55	Long
Rear Teat Pl.	+0.55	Close
Teat Pos. Side	+0.52	Apart
Temperament	+0.19	Good
Ease of Milk	+1.17	Fast
Locomotion	+1.08	Excellent

RANGER

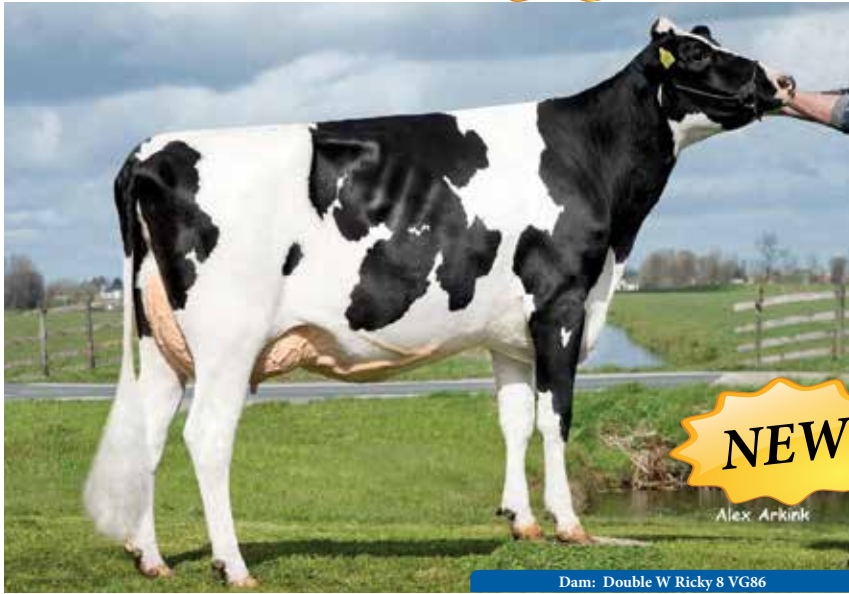
Double W Ranger

Sexed Semen Available



HB No: 65000071753166
Reflector X Snowfever X Sterngold

AI Code: HO5104
Source: Holland
DOB: 04.10.12



Holstein Genomic Production Proof	
DairyCo Breeding+	PTA 2015 (08/17)
PLI	£633
Milk Kg	+596
Fat Kg	+32.9
Fat %	+0.11
Protein Kg	+25.9
Protein %	+0.08
Reliability	67%

Young Genomic Pedigree Index

Highlights

- One of the best All Round Sires available
- Type, Production and Components
- Strong Bodied Cows
- Lowers High Pin setting
- Outstanding sire for Legs and Feet with excellent Locomotion



MANAGEMENT

Fertility Index	+5.5	Above Average
Lifespan	+0.5	Above Average
Somatic Cell Count	-12	Improver
TB Advantage	-0.9	Improver
Direct Calving Ease	+0.8	Suitable for Heifers
Mastitis Resistance	-2	Improver

YOUNG GENOMIC PEDIGREE INDEX

Holstein UK & Ireland 08/17

Type Merit	+2.36	Excellent
Mammary	+1.95	Excellent
Legs & Feet	+2.23	Excellent
Stature	+1.28	160 cm
Chest Width	+1.14	Wide
Body Depth	+1.02	Deep
Angularity	+0.73	Open Rib
Rump Angle	+1.70	Low Pins
Rump Width	+0.51	Wide
Rear Leg Side	-0.65	Sickled
Foot Angle	+1.20	Steep
Fore Udder Att	+1.89	Tight
Rear Udder Ht	+2.03	Very High
Udder Support	+0.78	Strong
Udder Depth	+1.55	20cm Above
Front Teat Pl.	+0.51	Close
Teat Length	+0.13	Long
Rear Teat Pl.	-0.56	Close
Teat Pos. Side	+0.53	Apart
Temperament	+0.38	Good
Ease of Milk	+1.59	Fast
Locomotion	+2.70	Excellent

RECOIL

Peak AltaRecoil-ET

HB No: 65003130641796
AltaSpring X Jacey X Robust
Beta-Casein: A2A2

AI Code: HO4738
Source: USA
DOB: 28.05.15



Holstein Genomic Production Proof	
DairyCo Breeding+	PTA 2015 (08/17)
PLI	£713
Milk Kg	+674
Fat Kg	+24.9
Fat %	-0.02
Protein Kg	+26.3
Protein %	+0.05
Reliability	67%

Young Genomic Pedigree Index

Highlights

- **High Production sire with high Daughter Fertility**
- **Outstanding Udders, especially Rear Udder Height and Udder Support**
- **Improves Side View Teat Position**



MANAGEMENT	
Fertility Index	+12.2 Above Average
Lifespan	+0.6 Above Average
Somatic Cell Count	-13 Improver
TB Advantage	+0.1 Improver
Direct Calving Ease	+0.0 Suitable for Heifers
Mastitis Resistance	-1 Improver

YOUNG GENOMIC PEDIGREE INDEX		Holstein UK & Ireland 08/17
Type Merit	+2.68	Excellent
Mammary	+2.41	Excellent
Legs & Feet	+2.09	Excellent
Stature	+0.39	160 cm
Chest Width	+0.51	Wide
Body Depth	-0.04	Deep
Angularity	+0.70	Open Rib
Rump Angle	+0.08	Low Pins
Rump Width	+0.32	Wide
Rear Leg Side	-0.52	Sickled
Foot Angle	+1.05	Steep
Fore Udder Att	+1.43	Tight
Rear Udder Ht	+2.35	Very High
Udder Support	+2.56	Strong
Udder Depth	+1.31	20cm Above
Front Teat Pl.	+1.79	Close
Teat Length	-1.23	Long
Rear Teat Pl.	+2.02	Close
Teat Pos. Side	+0.95	Apart
Temperament	+0.91	Good
Ease of Milk	+1.47	Fast
Locomotion	+2.24	Excellent

TOPSHOT

Bomaz AltaTopshot ET

HB No: 65000073953444
Supershot X AltaEmbassy X Robust
Beta-Casein: A2A2

AI Code: HO4739
Source: USA
DOB: 10.06.15



Holstein Genomic Production Proof

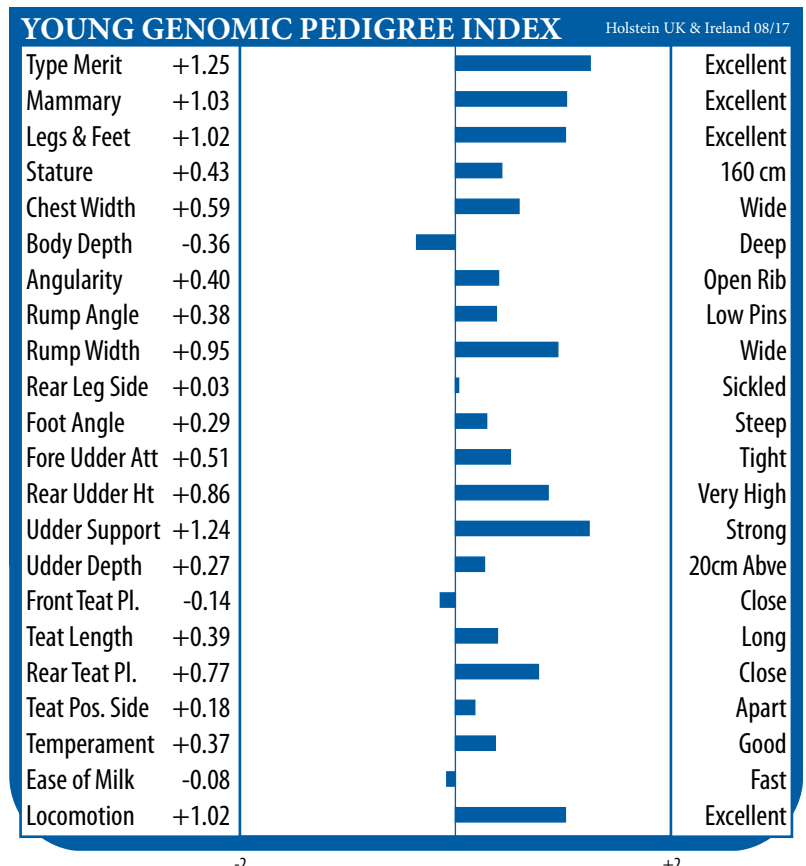
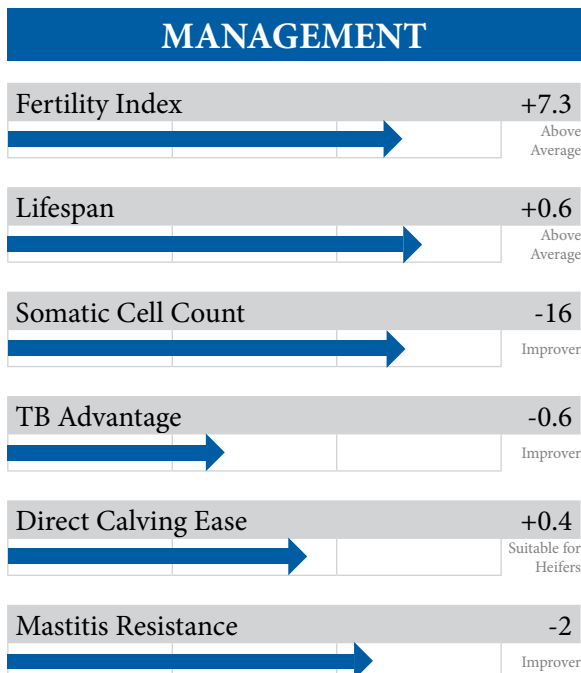
DairyCo Breeding+	PTA 2015 (08/17)
PLI	£740
Milk Kg	+994
Fat Kg	+41.2
Fat %	+0.02
Protein Kg	+35.0
Protein %	+0.03
Reliability	67%

Young Genomic Pedigree Index

Holstein Sires

Highlights

- **Fantastic Milk Production with close on +1000 Kgs Milk**
- **+76 Kgs of combined Fat and Protein**
- **Impressive Health Traits**
- **Improves all Type Traits**



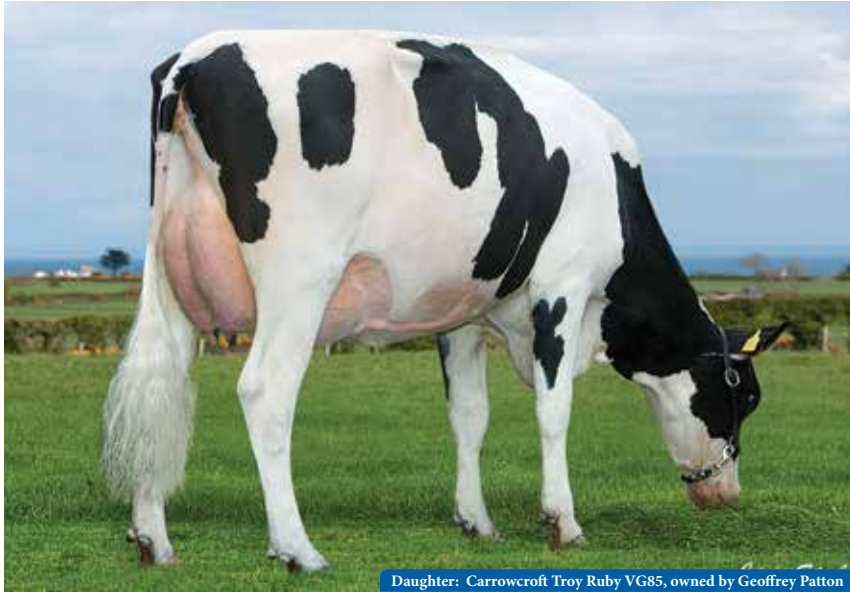
TROY

River-Bridge Co-Op Troy ET



HB No: 65000071753166
Mogul X Freddie X Mascol

AI Code: HO3101
Source: USA
DOB: 04.10.12



Daughter: Carrowcroft Troy Ruby VG85, owned by Geoffrey Patton

Holstein Interbull Production Proof	
DairyCo Breeding+	PTA 2015 (08/17)
PLI	£545
Milk Kg	+483
Fat Kg	+17.4
Fat %	-0.02
Protein Kg	+16.8
Protein %	+0.01
Reliability	80%
Daughters	1209
Herds	211

Daughter Proven

Highlights

- *First local milking daughters are impressing their owners*
- *Tremendous Daughter Fertility at +11.3*
- *Impressive Lifespan at +0.6 = 180 extra days Longevity*
- *Udders are snugly attached*



Daughter: Castletroy Troy Sadie, owned by Mark Truesdale

MANAGEMENT	
Fertility Index	+11.3 <small>Above Average</small>
Lifespan	+0.6 <small>Above Average</small>
Somatic Cell Count	-7 <small>Improver</small>
TB Advantage	+0.4 <small>Improver</small>
Direct Calving Ease	+0.5 <small>Suitable for Heifers</small>
Mastitis Resistance	-1 <small>Improver</small>

DAUGHTER CONFORMATION		Holstein UK & Ireland 08/17
Type Merit	+1.84	Excellent
Mammary	+1.48	Excellent
Legs & Feet	+1.70	Excellent
Stature	+0.08	160 cm
Chest Width	+0.21	Wide
Body Depth	-0.33	Deep
Angularity	+0.42	Open Rib
Rump Angle	+1.61	Low Pins
Rump Width	-0.97	Wide
Rear Leg Side	-2.48	Sickled
Foot Angle	+0.99	Steep
Fore Udder Att	+1.36	Tight
Rear Udder Ht	+0.67	Very High
Udder Support	+1.06	Strong
Udder Depth	+1.44	20cm Above
Front Teat Pl.	+0.73	Close
Teat Length	-0.47	Long
Rear Teat Pl.	+0.54	Close
Teat Pos. Side	+0.59	Apart
Temperament	+0.69	Good
Ease of Milk	+1.03	Fast
Locomotion	+1.94	Excellent



Dam: KHW Super Aderyn 78454

Holstein Genomic Production Proof	
DairyCo Breeding+	PTA 2015 (08/17)
PLI	£599
Milk Kg	+479
Fat Kg	+24.1
Fat %	+0.06
Protein Kg	+19.4
Protein %	+0.05
Reliability	69%

Young Genomic Pedigree Index

Highlights

- *Whatsapp offers a No Holes Linear*
- *Combines Type, Production and Health Traits all in one Package*
- *Calving Ease; suitable for Maiden Heifers*
- *Extremely high Daughter Fertility*



MGD: KHW Goldwyn Aiko-ET EX91

MANAGEMENT

Fertility Index	+9.3	Above Average
Lifespan	+0.6	Above Average
Somatic Cell Count	-17	Improver
TB Advantage	+1.2	Improver
Direct Calving Ease	+1.8	Suitable for Heifers
Mastitis Resistance	-3	Improver

YOUNG GENOMIC PEDIGREE INDEX

Holstein UK & Ireland 08/17

Type Merit	+1.77	Excellent
Mammary	+1.40	Excellent
Legs & Feet	+1.53	Excellent
Stature	+0.78	160 cm
Chest Width	+0.40	Wide
Body Depth	-0.29	Deep
Angularity	-0.09	Open Rib
Rump Angle	+0.31	Low Pins
Rump Width	-0.51	Wide
Rear Leg Side	+0.02	Sickled
Foot Angle	-0.16	Steep
Fore Udder Att	+1.10	Tight
Rear Udder Ht	+1.07	Very High
Udder Support	+1.10	Strong
Udder Depth	+1.33	20cm Above
Front Teat Pl.	+0.21	Close
Teat Length	+0.53	Long
Rear Teat Pl.	+0.85	Close
Teat Pos. Side	+0.49	Apart
Temperament	+0.80	Good
Ease of Milk	+0.58	Fast
Locomotion	+1.38	Excellent

CABRIOLET

Sexed Semen Only

Co-Op Robust Cabriolet ET
 HB No: 65000069560690
 Robust X Planet X Ramos

AI Code: HO2504
 Source: USA
 DOB: 27.06.11

Holstein Interbull Production Proof

PTA 2015 (08/17)

PLI	Milk Kg	Fat Kg	Fat %	Protein Kg	Protein %	Reliability	Daughters / Herds
£596	+655	+33.8	+0.09	+22.8	+0.02	88%	UK 28 / 5



Daughter: Aardema Cabriolet 7820

HIGHLIGHTS

Superb production and components
Excellent in all management traits
No. 7 UK Daughter Proven Sire

DAUGHTER CONFORMATION

Holstein UK & Ireland 08/17

Type Merit	+1.84	Excellent
Mammary	+1.48	Excellent
Legs & Feet	+1.70	Excellent
Stature	+0.08	160 cm
Chest Width	+0.21	Wide
Body Depth	-0.33	Deep
Angularity	+0.42	Open Rib
Rump Angle	+1.61	Low Pins
Rump Width	-0.97	Wide
Rear Leg Side	-2.48	Sickled
Foot Angle	+0.99	Steep
Fore Udder Att	+1.36	Tight
Rear Udder Ht	+0.67	Very High
Udder Support	+1.06	Strong
Udder Depth	+1.44	20cm Above
Front Teat Pl.	+0.73	Close
Teat Length	-0.47	Long
Rear Teat Pl.	+0.54	Close
Teat Pos. Side	+0.59	Apart
Temperament	+0.69	Good
Ease of Milk	+1.03	Fast
Locomotion	+1.94	Excellent

-2

+2

TUFFY

Sexed Semen Only

MS Welcome Uno Tuffy CRI ET
 HB No: 65000071451828
 Numero Uno X Colby X Brilea

AI Code: HO4882
 Source: USA
 DOB: 11.10.12

Holstein Interbull Production Proof

PTA 2015 (08/17)

PLI	Milk Kg	Fat Kg	Fat %	Protein Kg	Protein %	Reliability	Daughters / Herds
£565	+586	+27.3	+0.05	+21.3	+0.03	72%	106 / 30



Dam: Ms Welcome Colby Taya ET VG88

HIGHLIGHTS

Outcross pedigree
Longevity with fertile daughters
Component specialist, well attached udders
Great sire for maiden heifers

YOUNG GENOMIC PEDIGREE INDEX

Holstein UK & Ireland 08/17

Type Merit	+1.24	Excellent
Mammary	+1.37	Excellent
Legs & Feet	+0.21	Excellent
Stature	+0.89	160 cm
Chest Width	+0.56	Wide
Body Depth	-0.07	Deep
Angularity	+0.06	Open Rib
Rump Angle	+0.31	Low Pins
Rump Width	+0.47	Wide
Rear Leg Side	-1.16	Sickled
Foot Angle	+0.26	Steep
Fore Udder Att	+0.92	Tight
Rear Udder Ht	+1.64	Very High
Udder Support	+1.24	Strong
Udder Depth	+0.32	20cm Above
Front Teat Pl.	+1.32	Close
Teat Length	-1.34	Long
Rear Teat Pl.	+0.75	Close
Teat Pos. Side	+0.72	Apart
Temperament	+0.19	Good
Ease of Milk	-0.18	Fast
Locomotion	+0.41	Excellent

-2

+2

ACTION

Red Rocks Action ET

HB No: 63000671000936

Aikman X Glorious X Everspen

Source: Germany

DOB: 12.02.14



Dam: Massia 76 VG86

APOLL P

Schreur Apoll P- Red ET

HB No: 63000762042012

Aikman X Lawn Boy P X Bacculum

AI Code: HO3857

Source: Germany

DOB: 15.01.14



Dam: Ri-Val-Re Candlelight P VG86

SPITFIRE

Rijnhof DG Spitfire-Red

HB No: 6300065340916

Riverboy X Supersire X Detox

AI Code: HO4892

Source: Holland

DOB: 07.01.16



MGD: BTS-Avea Red VG87

HIGHLIGHTS

Exceptionally High Components

Strong Bodied Cows

Excellent Udders

Holstein Genomic Production Index

DairyCo Breeding+					PTA 2015 (08/17)	
PLI	Milk Kg	Fat Kg	Fat %	Protein Kg	Protein %	
£313	+296	+19.5	+0.09	+15.1	+0.07	
Young Bull Pedigree Index					Rel. 28%	

HOLSTEIN PEDIGREE INDEX

Holstein UK & Ireland 08/17

Type Merit	+0.84			Excellent
Mammary	+0.69			Excellent
Legs & Feet	+0.52			Excellent

HIGHLIGHTS

Very High Ranking in the German Listing

Siring Show Winning Progeny around Europe

Holstein Genomic Production Index

DairyCo Breeding+					PTA 2015 (08/17)	
PLI	Milk Kg	Fat Kg	Fat %	Protein Kg	Protein %	
£354	+452	+20.6	+0.04	+16.8	+0.03	
Young Bull Pedigree Index					Rel. 31%	

HOLSTEIN PEDIGREE INDEX

Holstein UK & Ireland 08/17

Type Merit	+0.99			Excellent
Mammary	+1.09			Excellent
Legs & Feet	+0.42			Excellent

HIGHLIGHTS

Moderate size cows with great Body Capacity

Calving Ease Sire

+0.6 Lifespan = 180 days extra Longevity

Holstein Genomic Production Index

DairyCo Breeding+					PTA 2015 (08/17)	
PLI	Milk Kg	Fat Kg	Fat %	Protein Kg	Protein %	
£582	+409	+23.4	+0.09	+21.0	+0.09	
Young Bull Pedigree Index					Rel. 64%	

HOLSTEIN PEDIGREE INDEX

Holstein UK & Ireland 08/17

Type Merit	+1.12			Excellent
Mammary	+0.78			Excellent
Legs & Feet	+1.39			Excellent



Ai SERVICES

– NORTHERN IRELAND –



*Helping Northern Irish Farmers to
Breed and Succeed!*

Breeding Specialist Team

AI Technician Team

Pregnancy Scanning Service

Top Dairy Genetics

Breed-Leading Beef Sires

Liquid Nitrogen Delivery Service

Embryo Transfer Services

Stud Facilities

DIY Training

DIY Equipment

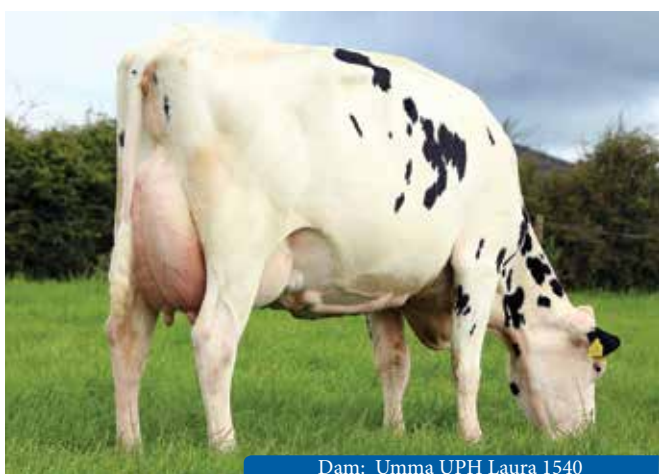
PEAKS



Umma Cuddy Peaks 91% Holstein 9% Friesian
 HB No: IE361080622276 Source: Ireland
 Pedigree: Reeks X Uphill

ICBF Genomic Proof Ireland (08/17)

Milk Kg	+114	Fat Kg	+11	Protein Kg	+10	Fat %	+0.11	Protein %	+0.10
EBI €216	Milk SI €65	Fertility SI €139	Calving SI €23	Beef SI -€12	Maintenance SI -€3	Management SI -€1	Health SI €5	EBI Rel %	52



Dam: Umma UPH Laura 1540

- **Healthy, Long Lasting Cows**
- **9,000 Litre Dam predicted to do 5.64% Fat and 3.66% Protein**

PEDIGREE

Sire: Gaddagh Cuddy Reeks
 Dam: Umma UPH Laura 1540
 MGS: Mars Uphill
 MGD: Umma Gibor Laura



CONFORMATION TRAITS Source: ICBF August 2017

ANG	STA	BD	CW	FRM	FA	RLS	LOC	BCS	RA	RW	FU
-1.13	-0.52	-1.99	-0.76	+0.00	-1.96	+0.56	-1.89	+0.50	+0.59	-1.35	-0.03
RUH	UD	US	RTP	TL	TP	TPS	OB	OD	OF&L	OT	OU
-0.83	+0.40	-1.40	-0.82	-2.53	-1.00	+0.00	-0.79	-0.59	-1.13	-1.09	-0.61

MAXIMUS



Courtmatrix Maximus 78% Holstein 22% Friesian
 HB No: IE41516161814 Source: Ireland
 Pedigree: Pirate X Gibor

ICBF Genomic Proof Ireland (08/17)

Milk Kg	+46	Fat Kg	+7	Protein Kg	+9	Fat %	+0.09	Protein %	+0.12
EBI €192	Milk SI €61	Fertility SI €98	Calving SI €34	Beef SI -€10	Maintenance SI €8	Management SI -€3	Health SI €3	EBI Rel %	61



Dam: Courtmatrix Ann 12

- **Superb High Protein Cow Family**
- **EX90 Dam**
- **10,000 Litre Dam with 754 Kgs of Solids**

PEDIGREE

Sire: Lissane Pirate
 Dam: Courtmatrix Ann 12
 MGS: Gibor
 MGD: Courtmatrix Ann 8

CONFORMATION TRAITS Source: ICBF August 2017

ANG	STA	BD	CW	FRM	FA	RLS	LOC	BCS	RA	RW	FU
-1.35	-0.52	-1.15	+0.57	+0.00	+0.43	-1.33	+0.04	+1.49	+2.51	+0.34	-0.44
RUH	UD	US	RTP	TL	TP	TPS	OB	OD	OF&L	OT	OU
-0.41	-0.20	-0.52	-0.71	+0.19	-1.26	+0.00	-0.64	-1.09	-0.16	-0.17	-0.57

EBI Sires

HERCULES



Hillsdale Hercules 78% Holstein 22% Friesian
 HB No: IE151549130878 Source: Ireland
 Pedigree: Angel X Dano

ICBF Genomic Proof Ireland (08/17)

Milk Kg	+120	Fat Kg	+19	Protein Kg	+9	Fat %	+0.24	Protein %	+0.08
EBI €161	Milk SI €66	Fertility SI €52	Calving SI €45	Beef SI -€3	Maintenance SI €5	Management SI -€1	Health SI -€3	EBI Rel %	66



- *Excellent Milk Production Sire*
- *Good Weights of Solids*

PEDIGREE

Sire: Curra CYK Angel 2
 Dam: Hillsdale BZR Heart
 MGS: Ballybride Dano
 MGD: Hillsdale Festive Heart

CONFORMATION TRAITS Source: ICBF August 2017

ANG	STA	BD	CW	FRM	FA	RLS	LOC	BCS	RA	RW	FU
-1.48	-1.56	-0.92	+1.70	+0.00	+0.61	-2.09	+0.80	+1.67	+0.82	-1.01	-0.77
RUH	UD	US	RTP	TL	TP	TPS	OB	OD	OF&L	OT	OU
-1.42	-1.02	-0.66	-0.54	-0.58	-0.40	+0.00	-0.67	-0.73	-1.03	-1.12	-1.30

EBI Sires

BLACK LIGHTNING



Clondrohid Black Lightning 94% Holstein 6% Friesian
 HB No: IE141801641177 Source: Ireland
 Pedigree: Levi X Haze

ICBF Genomic Proof Ireland (08/17)

Milk Kg	-33	Fat Kg	+15	Protein Kg	+7	Fat %	+0.28	Protein %	+0.13
EBI €256	Milk SI €63	Fertility SI €147	Calving SI €46	Beef SI -€21	Maintenance SI €12	Management SI €2	Health SI €8	EBI Rel %	54



- *5 Generations of Cows with up to 5% Fat and 3.7% Protein*
- *Faultless calving interval over 5 generations*
- *Positive for Health and Type Traits*

PEDIGREE

Sire: Radney Levi 5
 Dam: Adrivale KOZ Lila
 MGS: Kevinsfort OJI Haze
 MGD: Adrivale LZP Lila



CONFORMATION TRAITS Source: ICBF August 2017

ANG	STA	BD	CW	FRM	FA	RLS	LOC	BCS	RA	RW	FU
-1.48	+1.18	-3.43	-1.66	+0.00	-0.36	+0.50	+0.02	+0.92	+1.31	-3.98	+1.32
RUH	UD	US	RTP	TL	TP	TPS	OB	OD	OF&L	OT	OU
+0.12	+1.68	-0.73	-0.30	-2.59	-0.30	+0.00	-0.62	-0.10	-0.21	-0.15	-0.01

Castledale METRO

Castledale Metro

94% Friesian

HB No: 20000000657169

Source: UK

Emperor X Glen Albyn X Rocket

DOB: 22.02.12

Friesian Production Proof

August 2017

PLI	Milk Kg	Fat Kg	Fat %	Protein Kg	Protein %	Reliability	UK Dtrs/Herds	Friesian Type Merit (PI)
£263	+345	+9.7	-0.06	+12.9	+0.01	35%	9/4	-0.56



Grand Dam: Castledale Rocket Mavis 8 EX94(6)

HIGHLIGHTS

Sired by Kirkby Emperor – widely used and renowned for excellent daughter fertility

Grand Dam averaged 10105 Kgs Milk @ 4.14% Fat and 3.31% Protein in 9 lactations, 302 days

Excellent production and type improvement

PEDIGREE

Sire: Kirkby Emperor

Dam: Castledale Albyn Mavis 8 BFE92(4)

5LA 300D 8122 KGM 4.43%F 3.61%P

MGS: Blackisle Glen Albyn ET BFE

MGD: Castledale Rocket Mavis 5 EX94(7)

9LA 302D 10105 KGM 4.14%F 3.31%P

Inch TARQUIN

Inch Tarquin ET

88% Friesian

HB No: 20937005755745

Source: UK

Tarquin X Glen Albyn X Sem

DOB: 26.10.14

Friesian Pedigree Index

August 2017

PLI	Milk Kg	Fat Kg	Fat %	Protein Kg	Protein %	Reliability	Friesian Type Merit (PI)
£403	+136	+20.8	+0.21	+11.8	+0.10	39%	+0.76



Dam: Inch Blackisle Daphne 2 ET EX92(4)



Inch Tarquin

HIGHLIGHTS

Excellent Milk Quality

Suitable for Cross Breeding

No. 5 PLI Friesian Available

PEDIGREE

Sire: Deangate Tarquin

Dam: Inch Blackisle Daphne 2 ET EX92(4)

6LA 302D 10588 KGM 5.36%F 3.31%P

MGS: Blackisle Glen Albyn ET BFE

MGD: Inch Sem Daphne 2 ET VG88

5LA 305D 9806 KGM 5.61%F 3.42%P

Raven Hill **STORMIN NORMAN**

Breed: 100% Ayrshire

Source: UK

HB No: 03000006181978

DOB: 16.06.12

Ayrshire Pedigree Index

PTA 2015 (08/17)

PLI	Milk Kg	Fat Kg	Fat %	Protein Kg	Protein %	Reliability	Ayrshire Type Merit (PI)
£176	+739	+22.1	-0.10	+16.2	-0.11	38%	+0.96



Daughter: Ravenhill Norman Ethel



Group of Stormin Norman Daughters

HIGHLIGHTS

Exciting Local Ayrshire Bull

Dam yields up to 13177 Kgs in 305 Days

Dam EX93, Grand dam EX90

+739 kg Milk, +38.3 kg Fat + Protein

Semen exported to New Zealand

PEDIGREE

Sire: Duo Star Normandin

PGS: 3-907 T Bruno

Dam: Ravenhill Ethel 382 EX93(4)

MGS: McCornick Nelson ET

MGD: Ravenhill Ethel 324 EX90

3 Dam: Ravenhill Ethel 269 VG89

Raven Hill **VICTORY**

Breed: 100% Ayrshire

Source: UK

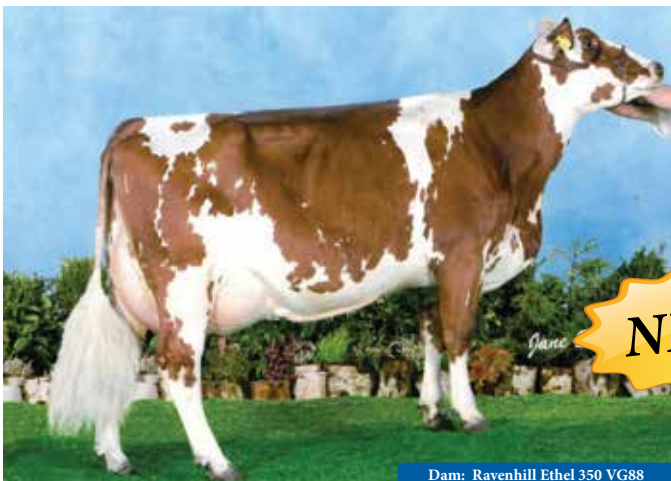
HB No: 03000006182211

DOB: 21.09.15

Ayrshire Pedigree Index

PTA 2015 (08/17)

PLI	Milk Kg	Fat Kg	Fat %	Protein Kg	Protein %	Reliability	Ayrshire Type Merit (PI)
£309	+449	+17.8	-0.01	+13.3	-0.03	30%	+0.96



Dam: Ravenhill Ethel 350 VG88

NEW

HIGHLIGHTS

Combines Production with Longevity

Dam produced 8 Lactations with VG88 Classification

Semen exported to New Zealand

PEDIGREE

Sire: Rosehill Vitality ET

PGS: Palmyra Tri-Star Reality

Dam: Ravenhill Ethel 350 VG88

MGS: Celandine First Lord

MGD: Ravenhill Ethel 250 EX94(3)

3 Dam: Ravenhill Ethel 206 EX(2)a

Coloured Breeds

VR UUDIN



VR Lakialan Ullimulli Uudin ET

Breed: 100% Ayrshire

Source: Finland

HB No: 73000000046301

DOB: 21.09.11

Ayrshire Production Proof

PTA 2015 (08/17)

PLI	Milk Kg	Fat Kg	Fat %	Protein Kg	Protein %	Reliability	Ayrshire Type Merit (PI)
£438	+694	+25.6	-0.04	+21.8	-0.02	76%	+0.70



Daughter: Laikku



VR Uudin

HIGHLIGHTS

**2000 Daughters in his Production Proof
and 1000 in his Type Proof**

Excellent Udders

Wide Rumps and Strong Chests

PEDIGREE

Asmo Ullimulli ET X Niemelän Ooppium X Lammin Life

AYRSHIRE DAUGHTER CONFORMATION

Denmark 08/17

Frame	105		Excellent
Udder	127		Excellent
Feet & Legs	97		Excellent

80

120

VR VIMPULA



VR Kuusian Valpas Vimputa

Breed: 100% Ayrshire

Source: Finland

HB No: 73000000046807

DOB: 09.10.12

Ayrshire Production Proof

PTA 2015 (08/17)

PLI	Milk Kg	Fat Kg	Fat %	Protein Kg	Protein %	Reliability	Daughters
£473	+815	+30.8	-0.04	+27.9	+0.01	72%	250



Daughter of VR Vimputa



Daughter of VR Vimputa

HIGHLIGHTS

Average Stature with strong Body Traits

Top Production Sire, Reliably Proven

Suitable for Robotic Milking Schemes

Dam's best Lactation 13400 KGM @

4.4% Fat and 3.6% Protein

PEDIGREE

Sammatin Valpas X Peterslund 1213 X Kuusijoen Etroni

AYRSHIRE DAUGHTER CONFORMATION

Denmark 08/17

Frame	98		Excellent
Udder	101		Excellent
Feet & Legs	112		Excellent

80

120

CASIMIR

Casimir JB

Breed: Montbelliarde

HB No: 5359875842

Source: France

Pedigree: Pernan X Nikos

Montbelliarde Production Proof							France (08/17)	
Milk Kg	Fat Kg	Fat %	Protein Kg	Protein %	Reliability	Daughters/Herds	INEL (Prod. Index)	ISU (Total Merit)
+551	+24	+0.3	+20	+0.3	95%	247 / 191	+25	121



Daughter: Fleole

*Top production sire with great type
Excellent udders*

DAUGHTER CONFORMATION			France 08/17
Total Type	107		Excellent
Body Capacity	110		Good
Rump	99		Good
Feet & Legs	104		Good
Udder	104		Good
Teats	111		Good
Muscularity	89		Good

88

112

MANAGEMENT TRAITS

Synthesis Udder Health	-0.3
Synthesis Fertility	-0.7
Longevity	+0.0
Calving Ease	86
Milking Speed	109
Temperament	100

ESPRIT

Esprit JB

Breed: Montbelliarde

HB No: 5375489147

Source: France

Pedigree: Tilleul X Natif

Montbelliarde Production Proof							France (08/17)	
Milk Kg	Fat Kg	Fat %	Protein Kg	Protein %	Reliability	Daughters/Herds	INEL (Prod. Index)	ISU (Total Merit)
+735	+26	-0.6	+21	-1.0	91%	61 / 56	+24	135



Daughter: Grillade

*Superb overall type traits
Robust cows, suitable for cross breeding,
without losing production
Recommended for Robotic Milking*

DAUGHTER CONFORMATION			France 08/17
Total Type	120		Excellent
Body Capacity	113		Good
Rump	108		Good
Feet & Legs	112		Good
Udder	116		Good
Teats	108		Good
Muscularity	102		Good

88

112

MANAGEMENT TRAITS

Synthesis Udder Health	+0.0
Synthesis Fertility	+0.1
Longevity	+0.5
Calving Ease	89
Milking Speed	112
Temperament	102

FLIPEX

Flipex JB Breed: Montbelliarde
 HB No: 8519408742 Source: France
 Pedigree: Triomphe X Redon X Micmac

Montbelliarde Production Proof							France (08/17)	
Milk Kg	Fat Kg	Fat %	Protein Kg	Protein %	Reliability	Daughters/Herds	INEL (Prod. Index)	ISU (Total Merit)
+756	+32	+0.3	+34	+1.4	95%	261 / 165	+42	149



Daughter: Idole

One of the Top Daughter Proven Bulls available
Production with Components
Widespread Proof

DAUGHTER CONFORMATION			France 08/17
Total Type	116		Excellent
Body Capacity	102		Good
Rump	86		Good
Feet & Legs	116		Good
Udder	122		Good
Teats	100		Good
Muscularity	99		Good

88

112

MANAGEMENT TRAITS

Synthesis Udder Health	+0.4
Synthesis Fertility	-0.4
Longevity	+0.5
Calving Ease	88
Milking Speed	92
Temperament	105

HARPON

Harpon JB Breed: Montbelliarde
 HB No: 3921920863 Source: France
 Pedigree: Flipex JB X Tilleul JB

Montbelliarde Genomic Proof							France (08/17)	
Milk Kg	Fat Kg	Fat %	Protein Kg	Protein %	Reliability	INEL (Prod. Index)	ISU (Total Merit)	
+913	+51	+2.1	+51	+1.1	70%	+50	159	



NEW

Harpon JB

One of the Top Bulls Available
High Production with fantastic Components
Suitable for Cross Breeding

DAUGHTER CONFORMATION			France 08/17
Total Type	111		Excellent
Body Capacity	112		Good
Rump	103		Good
Feet & Legs	107		Good
Udder	107		Good
Teats	107		Good
Muscularity	94		Good

88

112

MANAGEMENT TRAITS

Synthesis Udder Health	+0.4
Synthesis Fertility	+0.0
Longevity	+0.7
Calving Ease	88
Milking Speed	103
Temperament	107

Coloured Breeds

If you are interested in Montbelliarde Sexed Semen, please ask your Sales Representative for availability.

Faria Brothers PROP JOE^{ET}

Breed: Jersey Source: USA
 HB No: 76003011609994 DOB:21.06.13
 Pedigree: Hilario X Target

USDA Production Index

USDA CDCB August 17, Rel. 85%

Milk Lbs	Fat Lbs	Fat %	Protein Lbs	Protein %	Daughters/ Herds	JPI	PTAT	Lifetime Net Merit
+861	+103	+0.30	+45	+0.07	220/9	209	+1.70	\$706



PEDIGREE

Sire: Cal-Mart Renegade Hilario-ET
 Dam: GR Faria Brothers Target Ronaldo VG88
 03-02 2x 305D 10265 KGM 6.0%F 3.9%P
 MGS: Sunset Canyon Target-ET
 MGD: PR Faria Brothers Action Dean Smith EX92
 05-07 2x 305D 12660 KGM 4.4%F 3.5%P

HIGHLIGHTS

Exceptional Component Improvement
Beautiful Udders, Average Stature
For Cross Breeding Only

DAUGHTER CONFORMATION

AJCA 08/17

PTAT	+1.7		Excellent
Stature	+0.8		Tall
Strength	+0.5		Strong
Body Depth	+0.0		Deep
Dairy Form	+0.8		Open Rib
Rump Angle	+0.3		Sloped
Thurl Width	+0.4		Wide
R Legs Side	+0.2		Sickle
Foot Angl	+0.8		Steep
F U Attach	+2.1		Strong
R U Height	+1.4		High
R U Width	+0.6		Wide
Udder Cleft	+1.0		Strong
Udder Depth	+1.8		Shallow
F Teat Place	+1.4		Close
Teat Length	+0.4		Long

VJ QUINTANA

Breed: Jersey Source: Denmark
 HB No: 660000304301 DOB: 27.12.15
 Pedigree: VJ Rodme X DJ Zuma X DJ Prima

Danish Genomic Production Index

Viking Genetics 08/2017

Production Index	Milk Kg	Fat Kg	Fat %	Protein Kg	Protein %	gNTM
116	107	116	106	114	108	+26



HIGHLIGHTS

Top Class Production and Type Sire
Excellent Body Capacity and Wide Rumps
Exceptional Udder Attachment
Dam's best lactation: 12000 KGM 305 Days

PEDIGREE

Sire: VJ Rodme Nygaard
 Dam: 17895-02292
 Average 305D 10010 KGM 5.59%F 4.11%P
 MGS: DJ Zuma
 MGD: 17895-01790
 Average 305D 7699 KGM 5.45%F 4.34%P
 MGDS: DJ Prima

Danish Conformation Traits

Viking Genetics

Frame	127		Excellent
Udder	115		Excellent
Legs & Feet	103		Excellent

90

110

Coloured Breeds

TITAN

Cotonhall Titan
Breed: 62.4% Dairy Shorthorn
HB No: 028700671

Source: UK
DOB: 31.12.11



Dam: Cotonhall Tulip 2nd VG87

HIGHLIGHTS

*Great production sire with good type
Component specialist
Dam Classified VG87*

Shorthorn Production Proof

DairyCo Breeding+					August 2017
PLI	Milk Kg	Fat Kg	Fat %	Protein Kg	Protein %
£54	+339	+11.2	-0.03	+11.3	+0.00
Daughter Proven		7 UK Daughters in 2 UK Herds			Rel. 59%

Pedigree

Sire: Cotonhall Colby
PGS: Maxton Mossybank
Dam: Cotonhall Tulip 2nd VG87
3LA 305D 8602 KGM 4.37%F 3.51%P
MGS: Kian
MGD: Rantonall Tulip 15th VG88
5th Lactation 288D 7290 KGM 4.05%F 3.28%P

VR DALTON

VR Dalton
HB No: 17000036877
R Degn X R Admiral X Ferdi Red

Danish Red
Source: Denmark
DOB: 14.09.08



Daughter of VR Dalton

HIGHLIGHTS

*Widespread daughter proven sire
Deep bodies with strong Feet and Legs
Tremendous Farmer Satisfaction*

Danish Production Indexes

Viking Genetics					August 2017
Prod. Index	Milk Kg	Fat Kg	Fat %	Protein Kg	Protein %
122	109	123	114	119	113
Daughter Proven		289 Daughters			Rel. 96%

Danish Conformation Traits

Trait	Score	Visual	Rating
Frame	111		Excellent
Mammary	103		Excellent
Legs & Feet	110		Excellent

VR FABU

VR Fabu
HB No: 17000099958
Faabeli X Buckarby X S Signal

Danish Red
Source: Denmark
DOB: 29.12.15



VR Fabu

HIGHLIGHTS

*No. 1 Sire Available from Scandinavia
Strong, robust cows with excellent Longevity
High Weights of Fat and Protein Kgs and %*

Danish Genomic Indexes

Viking Genetics					August 2017
Prod. Index	Milk Kg	Fat Kg	Fat %	Protein Kg	Protein %
117	102	112	114	115	125
Young Genomic Pedigree Index					Rel. 69%

Danish Conformation Traits

Trait	Score	Visual	Rating
Frame	104		Excellent
Mammary	108		Excellent
Legs & Feet	105		Excellent

HARIBO

Fleckvieh Source: Germany
 HB No: DE0948636664 DOB: 22.12.13
 Pedigree: Hutera X BFG Rurex



Dam: Entropi

HIGHLIGHTS

Top Production Sire for Milk and Components
Outstanding Leg and Feet Improvements

Fleckvieh Genomic Production Proof Germany 08/17

Milk Kg	Fat Kg	Fat %	Protein Kg	Protein %
+873	+50	+0.17	+34	+0.04
Reliability	Milk Index		gTMI	
75%	130		131	

FLECKVIEH DAUGHTER CONFORMATION Germany 08/17

Frame	Udder	Feet & Legs	Conformation
103	112	118	Excellent
			76 124

MORATA

Fleckvieh Source: Germany
 HB No: DE0949532687 DOB: 04.07.14
 Pedigree: Mounteverest X BFG Remut



Dam: Loreen

HIGHLIGHTS

Improves all Health Traits
Strong Bodied Cows

Fleckvieh Genomic Production Proof Germany 08/16

Milk Kg	Fat Kg	Fat %	Protein Kg	Protein %
+969	+41	+0.02	+37	+0.04
Reliability	Milk Index		GZW	
64%	128		130	

FLECKVIEH DAUGHTER CONFORMATION Germany 08/17

Frame	Udder	Feet & Legs	Conformation
113	114	115	Excellent
			76 124

REMMEL

Fleckvieh Source: Germany
 HB No: DE0946581932 DOB: 25.03.12
 Pedigree: Ricki X Rumgo



Daughter: Naoam

HIGHLIGHTS

One of the Top Production Sires available
Exceptional Type Traits
Daughter Proven

Fleckvieh Production Proof Germany 08/16

Milk Kg	Fat Kg	Fat %	Protein Kg	Protein %
+1,111	+38	-0.08	+39	+0.00
Reliability	Milk Index	GZW	Daughters	Herds
97%	127	132	410	357

FLECKVIEH DAUGHTER CONFORMATION Germany 08/17

Frame	Udder	Feet & Legs	Conformation
113	114	115	Excellent
			76 124

Coloured Breeds

ISOLD

Isold Breed: Brown Swiss
 HB No: FR1214005319 Source: France
 Pedigree: Husold X Fernando DOB: 13.10.13

Brown Swiss Genomic Production Values						France (08/16)	
Milk Kg	Fat Kg	Fat %	Protein Kg	Protein %	Reliability	INEL (Prod. Index)	ISU (Total Merit)
+1331	+50	-0.2	+55	+0.7	68%	64	189



Very milky cows with added protein
Functional traits made to last

DAUGHTER CONFORMATION		France 08/16
TOTAL TYPE IND.	+0.7	Excellent
UDDER INDEX	+0.8	Excellent
DAIRY FORM	+1.4	Excellent
FEET & LEGS	+0.3	Excellent
Udder Depth	+0.4	Shallow
Medial Ligament	-0.1	Strong
R Udder Attach	+0.7	Strong
Rear Udder Wdth	+1.0	Wide
Fore Udder Att.	+0.8	High
Teat Length	-0.6	Long
Front Teat Pl.	-0.1	Close
Rear Teat Pl.	+0.0	Close
Stature	+0.5	High
Body Depth	+0.3	Deep
Rump Angle	-0.3	Sloped
Rump Width	+0.7	Wide
Rear Legs Side	-0.9	Sickled
Foot Angle	+0.0	Steep

AUBRAY

Aubray Breed: Normandy
 HB No: FR5006498801 Source: France
 Pedigree: Nivea X Look DOB: 19.07.05

Normandy Production Values						France (04/17)		
Milk Kg	Fat Kg	Fat %	Protein Kg	Protein %	Reliability	Daughters	INEL (Prod. Index)	ISU (Total Merit)
+10	+4	+0.7	+6	+0.9	95%	3014	8	133



Recommended for Cross Breeding
Tremendous Udders
Strong Robust Cows

DAUGHTER CONFORMATION		France 04/16
OVERALL TYPE	+1.3	Excellent
FRAME	+0.3	Excellent
Stature	-0.1	High
Chest Width	+0.9	Wide
Chest Depth	+0.2	Deep
Pin Width	-0.1	Wide
Rump Angle	-0.6	Sloped
UDDER	+1.1	Excellent
Fore Udder Att	+1.5	Long
Udder Balance	+1.1	High R Qtrs
Udder Depth	+1.1	Shallow
Rear Udder Ht	+0.4	High
Front Teat Pl.	+0.7	Close
Teat Direction	+1.5	Internal
Ligament	-0.1	Deep
MUSCULARITY	+1.0	Excellent
FEET & LEGS	+0.4	Excellent
Rear Legs Set	+1.0	Straight

Coloured Breeds

Beef Sires for the Dairy Herd

AI Services is committed to supplying the very best Beef Sires for use on dairy cows. Almost all of the sires selected have had detailed calving surveys carried out and have had progeny inspected for suitability.

AI Services also offers Fertility Boost Semen, which has been proven to enhance conception rates.

ROCKET

Excellent Growth and Muscling

Calving Survey Information	
No. Surveys	214
76 Cows + 138 Heifers	
Surgical Vet Assistance	1.0%
Non-Surgical Vet Asst	2.4%
Gestation Length	283 Days



NETWORK

First Place Prize Winner at Dungannon 2017

Tremendous Calving Ease figure of +4.5, placing him in the top 5% of the breed

Above Average figures for 200 and 400 Day Growth



ENDEAVOUR

*Top class calves
Excellent muscling*

Calving Survey Information	
No. Surveys	197
126 Cows and 5 Heifers	
Surgical Vet Assistance	2.6%
Non-Surgical Vet Asst	4.6%
Gestation Length	285 Days



INDEX

Excellent Colour Marking

Early results indicate Calving Ease

Calving Survey Information	
No. Surveys	9
104 Cows and 60 Heifers	
Surgical Vet Assistance	0.0%
Non-Surgical Vet Asst	0.0%
Gestation Length	290 Days



INCREDIBLE

*5★ Carcass Value
Very impressive young sire*

Use cautiously until a detailed calving survey has been carried out



GEORGE

Pure white sire, suitable for crossing on Dairy Cows

George displays smooth Muscling with natural fleshing ability



GAULLISTE

Recommended for crossing on Holstein Cows

Short gestation length

French Performance Data	
Calving Ease Index	101
Average Weight of Calves	43 Kg
Muscle Development	112
Conformation	117
Gestation Length	278 Days



GIOVANI

Exceptional Calf Quality

Use on cows only

Calving Survey Information	
No. Surveys	226
155 Cows and 71 Heifers	
Surgical Vet Assistance	3.1%
Non-Surgical Vet Asst	3.1%
Gestation Length	Days



HOTSPUR

*Calving Ease Sire
Shorter than average
Gestation Length*

HEREFORD
Trillick Hotspur
HB No: IE251104 781341
DOB: 22.12.12



Calving Survey Information	
No. Surveys	164
104 Cows and 60 Heifers	
Surgical Vet Assistance	1.2%
Non-Surgical Vet Asst	3.7%
Gestation Length	286 Days

IFOR

*Excellent well balanced
bull with impressive
muscle and shape*

Limousin
Ampertaine Ifor
HB No: UK9630001/2550-1
DOB: 26.10.14



Calving Survey Information	
No. Surveys	202
160 Cows and 42 Heifers	
Surgical Vet Assistance	4.0%
Non-Surgical Vet Asst	4.0%
Gestation Length	292 Days

UMAR

*Proven Crossing Sire on
Dairy Cows*

Widespread Usage

LIMOUSIN
Rahoney Umar
HB No: MDS03-012
DOB: 26.05.03



Calving Survey Information	
No. Surveys	209
194 Cows and 15 Heifers	
Surgical Vet Assistance	1.5%
Non-Surgical Vet Asst	3.5%
Gestation Length	294 Days

BALDWIN

*Excellent quality calves
Widespread Usage*

SIMMENTAL
Omorga Baldwin 10
HB No: M076745
DOB: 21.05.10



Calving Survey Information	
No. Surveys	214
189 Cows and 25 Heifers	
Surgical Vet Assistance	3.3%
Non-Surgical Vet Asst	2.8%
Gestation Length	291 Days

Fertility Boost

AI Services offers a selection of mixed beef semen. Mixed semen of this nature has been shown to significantly improve conception rates.

Triple Mix British Blue

*Rostrevor George +
Chatham Index +
Boroside Incredible*



AA x BB x HER

*Woodvale Network
+ Rostrevor George
+ Trillick Hotspur*



BB x AA x HER

*Chatham Index +
Thrunton Rocket +
Graceland Giovani*



LIM x AA x BB

*Ampertaine Ifor +
Thrunton Rocket +
Boroside Incredible*



Additional Mixes are available by request. Individual sires may change in the mixture from time to time.



At Your Service . . .

AI SERVICES

- NORTHERN IRELAND -

Ballycraigy 671 Antrim Road
Newtownabbey Co Antrim
BT36 4RL

Tel: 028 9083 3123

Fax: 028 9084 2640

Web: www.ai-services.co.uk

Email: info@ai-services.co.uk

To Book a Service
Call
Telephone:

FREEPHONE
0800 17 11 11

Headquarters and Stud Facility Ballycraigy 028 9083 3123

Breeding Information Ivan Minford 078 3118 9852

028 9083 3123

iminford@ai-services.co.uk

Michelle Hill 028 9083 3123

mchill@ai-services.co.uk

BREEDING SPECIALISTS

ANTRIM / LONDONDERRY

Ben Mallon 078 8444 3899

Ivan Minford 078 3118 9852

Gary Henderson 079 8934 6226

David Dunlop 079 7660 5701

Nigel Spence 078 0927 4141

Mervyn Nelson 079 0997 2711

Jonathan Kelso 077 2921 8118

David Vance 077 9584 1306

David McCall 077 7880 5357

Robin Boyd 077 9934 6784

David Vance 077 9584 1306

DOWN / ARMAGH

FERMANAGH / TYRONE

EMBRYO TRANSFER

STUD MANAGER

DIY TRAINING

