

Grazing Genetics

Sire Directory 2018



Ai SERVICES
- NORTHERN IRELAND -



MAESTRO

Kildarra Maestro (SUPPLEMENTARY MALE REGISTERED)

HB No: IE141518921049

66%HO/ 34%FR



aAa: 423651

FR2053

GENOMIC

DOB: 02.03.14

OFFICIAL EVALUATIONS		Dec 2017			
EBI	€281	63%	CALVING	€60	91%
MILK	€102	68%	Calv. Diff. (%)	2.30	99%
Milk kgs	174	68%	Gest. (Days)	-5.41	99%
Fat	20kg +0.22%	68%	BEEF	-€6	75%
Protein	13kg +0.12%	68%	HEALTH	€3	52%
FERTILITY	€105	50%	SCC	0.01	59%
Calv. Int. (Days)	-5.11	51%	MAINTENANCE	€13	55%
Survival (%)	3.24	48%	MANAGEMENT	€4	63%

Bred by: Ross & Kyle O'Donovan, Bandon

PRE ORDER BULL



Modeligo WPE May VG86: Dam

PEDIGREE

S Imleach Lucky Whistler (WLY)

D Modeligo WPE May VG86

7 Lact. Avg. 305D 6858KGM 4.30%F 3.62%P
5th Lact. 305D 7679KGM 4.48%F 3.61%P

MGS Whinlea Palad Eckland (WPE)

MGD Modeligo CWJ May 1506 x CWJ

9 Lact. Avg. 305D 5600KGM 4.32%F 3.52%P
6th Lact. 305D 6266KGM 4.37%F 3.57%P

3rd D Laha CBH May 1106 x CBH

11 Lact. Avg. 305D 5732KGM 4.30%F 3.57%P
4th Lact. 305D 6539KGM 4.76%F 3.59%P

DAUGHTER CONFORMATION		12/17 ICBF
Feet & Legs -1.13		Excellent
Overall Udder -0.04		Excellent
Overall Type -0.42		Excellent
Scale	-2	+2

- 174kg Milk with 33kg Milk Solids.
- 3 Generations of High Protein.
- Dam has consistently given over 670kgs MS with exceptional components.
- Most complete WLY (Whistler) Son.

ORCA

Three Rivers Orca (SUPPLEMENTARY MALE REGISTERED)

HB No: IE151658951564

69%HO/ 25%FR



FR4246

GENOMIC

DOB: 25.02.16

aAa: 354126

OFFICIAL EVALUATIONS		Dec 2017			
EBI	€287	48%	CALVING	€39	52%
MILK	€136	57%	Calv. Diff. (%)	2.10	50%
Milk kgs	344	57%	Gest. (Days)	-2.74	60%
Fat	19kg +0.08%	57%	BEEF	-€1.4	44%
Protein	22kg +0.17%	57%	HEALTH	€0	42%
FERTILITY	€109	42%	SCC	0.01	48%
Calv. Int. (Days)	-5.25	43%	MAINTENANCE	€12	40%
Survival (%)	3.43	40%	MANAGEMENT	€6	42%

Bred by: Batt O'Connell, Clykeel, Rathcormac

PRE ORDER BULL



Threerivers Louisa GP82: Dam

PEDIGREE

S	Fortfergus Artic Orca (TFZ)				
D	Threerivers Louisa (GP82)				
3 Lact. Avg.	305D	7727KGM	4.27%F	3.88%P	
2 nd Lact.	305D	6985KGM	4.76%F	4.00%P	
MGS	HSS VHA Lochinvar (LRW)				
MGD	IE151658930886 x PKK				
2 Lact. Avg.	285D	4904KGM	4.18%F	3.44%P	
2 nd Lact.	266D	5308KGM	4.03%F	3.48%P	
3rd D	IE151658930639 x LYX				
3 Lact. Avg.	279D	4877KGM	4.62%F	3.72%P	
2 nd Lact.	299D	5238KGM	4.62%F	3.84%P	

DAUGHTER CONFORMATION		12/17 ICBF
Feet & Legs +0.92		Excellent
Overall Udder -1.86		Excellent
Overall Type -1.47		Excellent
Scale	-2	+2

- 41kgs Milk Solids.
- Top Bull for Milk Si.
- 4.0% Protein Dam.
- Dam has a superb udder with excellent Feet & Legs.

ALFIE

Curra Alfie (FULL PEDIGREE)

HB No: IE351066161527

84%HO/ 16%FR



FR2051

GENOMIC

DOB: 30.01.14

aAa: 243165

OFFICIAL EVALUATIONS				Dec 2017		
EBI	€263	63%	CALVING	€60	88%	
MILK	€59	71%	Calv. Diff. (%)	2.30	95%	
Milk kgs	198	71%	Gest. (Days)	-5.32	99%	
Fat	8kg	+0.01%	71%	BEEF	-€6	65%
Protein	10kg	+0.06%	71%	HEALTH	€0	53%
FERTILITY	€139	53%	SCC	+0.06	60%	
Calv. Int. (Days)	-7.48	53%	MAINTENANCE	€7	53%	
Survival (%)	3.59	53%	MANAGEMENT	€4	52%	

Bred by: Kieran Hearne, Rathgormac



Curra Piper Anne VG88: Dam

PEDIGREE					
S	Dungourney Cremin (DGC)				
D	Curra Piper Anne VG88				
9 Lact. Avg.	305D	7731KGM	3.76%F	3.60%P	
7 th Lact.	305D	8787KGM	3.76%F	3.60%P	
MGS	Lakeside VCP Pan Piper (LPP)				
MGD	Curra Red Anne GP80 x SPW				
10 Lact. Avg.	305D	6200KGM	4.00%F	3.87%P	
4 th Lact.	305D	7638KGM	4.49%F	3.92%P	
3rd D	Curra SSB Anne x SSB				
7 Lact. Avg.	305D	7492KGM	4.12%F	3.68%P	
7 th Lact.	305D	6884KGM	4.08%F	3.66%P	

DAUGHTER CONFORMATION		12/17 ICBF
Feet & Legs -0.59		Excellent
Overall Udder +0.05		Excellent
Overall Type -0.19		Excellent
Scale	-2	+2

- Complete Outcross Pedigree.
- Generations of High Solids.
- Consistent Cow Family at Curra.
- Use on WLY, SEW, LWR, LHZ, GZY & AWS.

ATLAS

Kilteskin Atlas (FULL PEDIGREE)

HB No: IE151799171343

75%HO/ 25%FR



FR2429

GENOMIC

DOB: 18.03.14

aAa:

OFFICIAL EVALUATIONS		Dec 2017			
EBI	€233	61%	CALVING	€49	86%
MILK	€67	71%	Calv. Diff. (%)	2.50	92%
Milk kgs	284	71%	Gest. (Days)	-4.10	98%
Fat	11kg	-0.01%	BEEF	-€9	49%
Protein	12kg	+0.04%	HEALTH	-€2	54%
FERTILITY	€109	53%	SCC	0.02	61%
Calv. Int. (Days)	-5.79	53%	MAINTENANCE	€8	46%
Survival (%)	+2.90	52%	MANAGEMENT	€10	52%

Bred by: Thomas Russell, Aghada, Middleton



L-R: EX90 Dam & EX90 GDam

PEDIGREE

S	Parkdub Magnet (PKX)				
D	Kilteskin BWZ Aisling 614 (EX90)				
9 Lact. Avg.	305D	7174KGM	4.39%F	3.73%P	
7 th Lact.	305D	7672KGM	4.62%F	3.82%P	
MGS	Bagworth Zander Keet (BWZ)				
MGD	Kilteskin UYC Aisling 492 (EX90)				
11 Lact. Avg.	305D	6910KGM	4.09%F	3.59%P	
6 th Lact.	305D	7522KGM	4.42%F	3.59%P	
3rd D	Aisling				
13 Lact. Avg.	305D	7906KGM	3.30%F	3.27%P	
13 th Lact.	305D	6290KGM	3.64%F	3.25%P	

DAUGHTER CONFORMATION		12/17 ICBF
Feet & Legs	-1.01	Excellent
Overall Udder	+0.22	Excellent
Overall Type	+0.27	Excellent
Scale	-2	+2

- Exceptional Longevity!
- EX90 Dam & GDam in 10th & 12th Lactations.
- Dam gave 7672kg Milk, 4.62% Fat & 3.82% Protein.
- Really nice, Stylish Youngstock.

ABSOLUTE

Jeanjo Absolute (FULL PEDIGREE)

HB No: IE161260264354



78%HO/ 19%FR



aAa: 342516

FR4244

GENOMIC

DOB: 17.02.16

OFFICIAL EVALUATIONS		Dec 2017			
EBI	€301	50%	CALVING	€59	52%
MILK	€84	59%	Calv. Diff. (%)	1.50	50%
Milk kgs	244	59%	Gest. (Days)	-4.81	59%
Fat	15kg +0.09%	59%	BEEF	-€18	43%
Protein	13kg +0.08%	59%	HEALTH	€4	46%
FERTILITY	€155	45%	SCC	0.00	53%
Calv. Int. (Days)	-8.42	45%	MAINTENANCE	€12	40%
Survival (%)	3.94	44%	MANAGEMENT	€5	44%

Bred by: David Roulston, Cloughfin, St. Johnstown,
Lifford, Co. Donegal

PRE ORDER BULL



Jeanjo KOZ Anna 3066: Dam

PEDIGREE

S	Curra Royal Laurence (ZRL)				
D	Jeanjo KOZ Anna 3066				
2 Lact. Avg.	305D	7207KGM	3.81%F	3.43%P	
2 nd Lact.	305D	7854KGM	3.90%F	3.49%P	
MGS	Kevinsfort OJI Haze (KOZ)				
MGD	Jeanjo Dauntless Anna 1910 x DXU				
2 Lact. Avg.	305D	6816KGM	3.88%F	3.20%P	
2 nd Lact.	305D	8665KGM	3.65%F	3.13%P	
3rd D	Jeanjo Apache Anna 1213 x TIA				
3 Lact. Avg.	305D	4396KGM	4.01%F	3.34%P	
3 rd Lact.	305D	4796KGM	3.80%F	3.12%P	

DAUGHTER CONFORMATION		12/17 ICBF
Feet & Legs -0.87		Excellent
Overall Udder -0.71		Excellent
Overall Type -1.26		Excellent
Scale	-2	+2

- Complete High EBI Sire.
- Bred in a big commercial 450 cow herd.
- KOZ Dam has great Fertility.
- Full Pedigree.

BOYCIE

Ballygown YRY Boycie (FULL PEDIGREE)

HB No: IE211058411335



75%HO/ 25%FR



aAa: 342516

FR4242

GENOMIC

DOB: 05.02.16

OFFICIAL EVALUATIONS		Dec 2017			
EBI	€261	52%	CALVING	€51	47%
MILK	€102	66%	Calv. Diff. (%)	2.00	49%
Milk kgs	-11	66%	Gest. (Days)	-4.19	46%
Fat	21kg +0.36%	66%	BEEF	-€11	46%
Protein	10kg +0.18%	66%	HEALTH	-€3	50%
FERTILITY	€110	45%	SCC	0.16	59%
Calv. Int. (Days)	-5.66	46%	MAINTENANCE	€7	41%
Survival (%)	3.13	44%	MANAGEMENT	€4	47%

Bred by: Seamus Knox, Ballygown, Pittown



Ballygown GZF Mia (VG88): MGDam

PEDIGREE

S	Radney Levi 5 (YRY)				
D	Ballygown PKX Mia 1160 (GP84)				
2 Lact. Avg.	305D	8068KGM	5.08%F	4.00%P	
2 nd Lact.	305D	8382KGM	5.12%F	4.03%P	
MGS	Morningview Levi (MWL)				
MGD	Ballygown GZF Mia (VG88)				
5 Lact. Avg.	305D	8188KGM	4.66%F	3.72%P	
4 th Lact.	305D	9450KGM	4.74%F	3.62%P	
3rd D	Ballygown UYC Mia (VG87)				
8 Lact. Avg.	305D	7918KGM	4.17%F	3.63%P	
7 th Lact.	305D	7950KGM	4.33%F	3.70%P	

DAUGHTER CONFORMATION		12/17 ICBF
Feet & Legs +0.38		Excellent
Overall Udder -0.08		Excellent
Overall Type +0.31		Excellent
Scale	-2	+2

- Strength & Solids.
- Extreme Components.
- GZF GDam (pictured above) is dam of Top Proven Sire Miley (YBG).
- Available Sexed.

ACE

Kiltleskin Ace (FULL PEDIGREE)
HB No: IE151799191262



75%HO / 25% FR



aAa: 534162

FR2050

GENOMIC
DOB: 25.01.14

OFFICIAL EVALUATIONS		Dec 2017			
EBI	€231	63%	CALVING	€40	89%
MILK	€127	72%	Calv. Diff. (%)	2.30	97%
Milk kgs	106	72%	Gest. (Days)	-3.35	99%
Fat	24kg +0.34%	72%	BEEF	-€10	56%
Protein	15kg +0.19%	72%	HEALTH	-€3	55%
FERTILITY	€65	54%	SCC	0.05	61%
Calv. Int. (Days)	-3.15	55%	MAINTENANCE	€8	49%
Survival (%)	2.07	52%	MANAGEMENT	€3	54%

Bred by: Thomas Russell, Adagha, Middleton



Kiltleskin BWZ Daffodil 689 VG86: Dam

PEDIGREE

S	Ballinaborta Primo (PBM)				
D	Kiltleskin BWZ Daffodil 689 VG86				
8 Lact. Avg.	305D	6726KGM	4.89%F	3.61%P	
7 th Lact.	305D	7010KGM	4.94%F	3.71%P	
MGS	Bagworth Zander Keet (BWZ)				
MGD	Kiltleskin NHS Daffodil 575 VG88				
8 Lact. Avg.	305D	7204KGM	4.08%F	3.57%P	
8 th Lact.	305D	7161KGM	4.22%F	3.65%P	
3rd D	Kiltleskin GMI Daffodil				
7 Lact. Avg.	305D	6609KGM	4.16%F	3.57%P	
4 th Lact.	305D	6583KGM	4.30%F	3.80%P	

DAUGHTER CONFORMATION		12/17 ICBF
Feet & Legs -0.84		Excellent
Overall Udder -1.05		Excellent
Overall Type -1.11		Excellent
Scale	-2	+2

- Almost 40kgs of Milk Solids.
- Excellent Cow Family.
- Unique aAa Score (534).

SUPERSONIC

Whinlea Dan Supersonic (FULL PEDIGREE)

HB No: 62000000106219



69%HO/ 31%FR



FR4242

DAUGHTER PROVEN

DOB: 17.08.05

OFFICIAL EVALUATIONS		Dec 2017				
EBI	€173	97%	CALVING	€37	99%	
MILK	€90	99%	Calv. Diff. (%)	2.60	99%	
Milk kgs	+448	99%	Gest. (Days)	-2.70	99%	
Fat	14kg	-0.05%	99%	BEEF	-€21	99%
Protein	17kg	+0.03%	99%	HEALTH	€2	91%
FERTILITY	€61	94%	SCC	-0.02	99%	
Calv. Int. (Days)	-2.69	94%	MAINTENANCE	€7	98%	
Survival (%)	2.16	95%	MANAGEMENT	-€3	95%	



Daughter of Supersonic



DAUGHTER PROVEN

PEDIGREE

S Hazael Eminence Dano-ET

D Whinlea Gerris Source

1 st Lact.	275D	5254KGM	4.17%F	3.81%P
2 nd Lact.	232D	5645KGM	4.14%F	3.67%P
Average	199D	4662KGM	4.10%F	3.60%P

MGS Delta NLD Gerris-ET

MGD SRD Whinlea Kai Siobhan

1 st Lact.	232D	4394KGM	4.24%F	3.42%P
2 nd Lact.	228D	5490KGM	4.60%F	3.75%P
Average	204D	4752KGM	4.20%F	3.50%P

3rd D SRC Whinlea Mount Sassy

DAUGHTER CONFORMATION		12/17 ICBF
Feet & Legs	-2.55	Excellent
Overall Udder	-1.85	Excellent
Overall Type	-2.33	Excellent
Scale	-2	+2

- Excellent Production Sire
- Widespread Daughter Proof
- Lowers stature, with good body capacity

CUDDY PEAKS

Umma Cuddy Peaks (FULL PEDIGREE)

HB No: IE361080622276

91%HO / 9% FR



aAa: 234165

FR2436

GENOMIC

DOB: 16.03.15

OFFICIAL EVALUATIONS				Dec 2017	
EBI	€231	58%	CALVING	€28	86%
MILK	€63	67%	Calv. Diff. (%)	2.30	92%
Milk kgs	39	67%	Gest. (Days)	-1.53	98%
Fat	6kg +0.08%	67%	BEEF	-€11	51%
Protein	9kg +0.14%	67%	HEALTH	€11	51%
FERTILITY	€144	48%	SCC	-0.15	58%
Calv. Int. (Days)	-6.99	48%	MAINTENANCE	-€3	45%
Survival (%)	+4.51	47%	MANAGEMENT	-€2	48%

Bred by: Joe O'Rourke, Moyvoughly, Moate



Umma UPH Laura 1540:Dam

PEDIGREE

S Gaddagh Cuddy Reeks (GZY)

D Umma UPH Laura 1540

4 Lact. Avg.	305D	7754KGM	5.21%F	3.73%P
3 rd Lact.	305D	9147KGM	5.64%F	3.66%P

MGS Mars Uphill (UPH)

MGD Umma Gibor Laura x GIO

7 Lact. Avg.	305D	8078KGM	4.07%F	3.45%P
5 th Lact.	305D	9066KGM	4.96%F	3.62%P

3rd D Laura

7 Lact. Avg.	305D	5490KGM	3.97%F	3.50%P
7 th Lact.	305D	6771KGM	3.61%F	3.34%P

DAUGHTER CONFORMATION		12/17 ICBF
Feet & Legs -0.87		Excellent
Overall Udder -0.61		Excellent
Overall Type -0.82		Excellent
Scale	-2	+2

- From a long lasting cow family.
- His Dam has averaged over 630kg MS in 4 Lactations.
- High Health, balanced breeding.

GLOSS

Imleach Lucky Gloss (SUPPLEMENTARY MALE REGISTERED)

HB No: IE341365621426

63%HO/ 34%FR



aAa: 315246

YKG

83dtrs /38hrds

DOB: 10.03.13

OFFICIAL EVALUATIONS		Dec 2017				
EBI	€269	73%	CALVING	€53	93%	
MILK	€91	90%	Calv. Diff. (%)	2.40	99%	
Milk kgs	208	90%	Gest. (Days)	-4.47	99%	
Fat	17kg	+0.14%	90%	BEEF	-€3	92%
Protein	13kg	+0.09%	90%	HEALTH	-€5	63%
FERTILITY	€130	51%	SCC	+0.11	72%	
Calv. Int. (Days)	-6.33	52%	MAINTENANCE	€0	63%	
Survival (%)	4.01	50%	MANAGEMENT	€3	63%	



Imleach Gloss 916 VG86: Dam

Bred by:
Tadhg O'Meara, Emly

PRE ORDER BULL



DAUGHTER PROVEN

PEDIGREE

S Imleach Lucky Whistler (WLY)

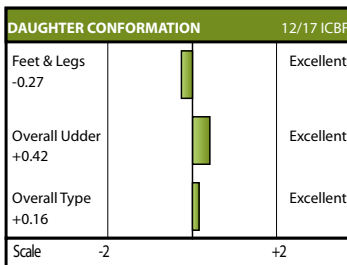
D Imleach Gloss 916 VG86

6 Lact. Avg. 305D 5782KGM 4.94%F 3.94%P
5th Lact. 305D 5226KGM 5.72%F 4.17%P

MGS Kiemans Norwester (KNW)

MGD Imleach GMI Gloss x GMI

5 Lact. Avg. 305D 5641KGM 4.12%F 3.69%P
5th Lact. 305D 7157KGM 3.57%F 3.71%P



- Top Daughter Proven Bull.
- €269 EBI & 30kgs Solids.
- High Fertility SI €130
- Superb all-rounder.

INSTEAD

Instead (FULL PEDIGREE)
HB No: 71002918690319



100%HO

HO4287

GENOMIC
DOB: 27.06.13

Holstein Genomic Production Proof Dec 2017

Dairy Co Breeding +		PTA 2015 Dec 2017	
PLI	£585	Direct Calving Ease	+0.5
Milk kgs	+467	Fertility Index	+3.6
Fat Kg	+32.1	Lifespan	+0.5
Fat %	+0.16	Somatic Cell Count	-21
Protein Kg	+23.4	TB Advantage	+1.5
Protein %	+0.10	Mastitis Resistance	-2
Young Genomic Pedigree Index		Rel. 66%	



Dam: Gracieuse

PEDIGREE

S	Seagull-Bay Supersire ET			
D	Gracieuse			
1 st Lact.	296D	6448KGM	4.47%F	3.51%P
MGS	Vosac Man			
MGD	Ecolie 4804 (VG85)			
1 st Lact.	305D	7511KGM	3.34%F	3.15%P
2 nd Lact.	305D	8872KGM	3.47%F	3.16%P
3S	Roumare			

DAUGHTER CONFORMATION		12/17 HUKI
Legs & Feet +0.63		Excellent
Mammary +1.26		Excellent
Type Merit +1.53		Excellent
Scale	-2	+2

- Extremely high component specialist
- Positive in all the management traits
- Improves udders, especially rear udder height
- Reduces Size and Angularity
- Calving ease, suitable for heifers

OMEN

Prehen Omen ET EX94 (FULL PEDIGREE)

HB No: 0100000644841



HO3359

DAUGHTER PROVEN

DOB: 11.04.09

100%HO

Holstein Interbull Production Proof Dec 2017

Dairy Co Breeding +		PTA 2015 Dec 2017	
PLI	£581	Direct Calving Ease	+0.7
Milk kgs	+79	Fertility Index	+6.9
Fat Kg	+17.6	Lifespan	+0.5
Fat %	+0.18	Somatic Cell Count	-1.3
Protein Kg	+17.9	TB Advantage	+1.5
Protein %	+0.19	Mastitis Resistance	-1
Daughter Proven		Rel. 92%	

Daughters: Relough Omen Roxie 4 EX90 and Relough Omen Danna 4 VG88, bred by R McClean & Sons



DAUGHTER PROVEN

PEDIGREE

S	O-Bee Manfred Justice ET EX94			
D	Prehen Goldwyn Froukje ET EX94			
4 th Lact.	305D	14787KGM	4.21%F	3.66%P
Average	305D	12077KGM	4.20%F	3.60%P
MGS	Braedale Goldwyn			
MGD	Froukje 277 VG89			
2 nd Lact.	305D	11361KGM	5.48%F	4.01%P
Average	305D	10886KGM	5.50%F	3.90%P
MGGS	Delta Novalis			
MGGS	Froukje 219 VG87			
3 rd Lact.	305D	11530KGM	5.11%F	3.68%P
4 th Lact.	305D	12292KGM	5.13%F	3.68%P

DAUGHTER CONFORMATION		12/17 HUKI
Legs & Feet +0.91		Excellent
Mammary +0.88		Excellent
Type Merit +1.34		Excellent
Scale	-2	+2

- No. 1 UK Daughter Proven Sire for the past three years
- Bred in Northern Ireland, proven in Northern Ireland
- Excellent production with massive improvement in components
- Strong robust cows with tremendous daughter fertility
- Improves legs and feet with good locomotion

LANCASTER

Prehen Lancaster ET (FULL PEDIGREE)

HB No: 01954082142776



100%HO

HO4836

GENOMIC

DOB: 05.06.16

Holstein Genomic Production Proof Dec 2017

Dairy Co Breeding +

PTA 2015 Dec 2017

PLI	£775	Direct Calving Ease	+0.8
Milk kgs	+709	Fertility Index	+17.4
Fat Kg	+31.5	Lifespan	+0.7
Fat %	+0.04	Somatic Cell Count	-14
Protein Kg	+24.8	TB Advantage	+0.6
Protein %	+0.02	Mastitis Resistance	-2
Young Genomic Pedigree Index		Rel. 64%	



Dam: Prehen Shamrock Lady ET VG85

PEDIGREE

S	Sandy-Valley-I Penmanship ET			
D	Prehen Shamrock Lady ET VG85			
1 st Lact.	305D	9755KGM	4.10%F	3.13%P
2 nd Lact.	305D	11802KGM	4.10%F	3.03%P
MGS	Ladys-Manor PL Shamrock ET EX90			
MGD	Diepenhoek Model Lady 8			
3 rd Lact.	305D	12557KGM	3.92%F	3.40%P
Average	305D	10665KGM	3.90%F	3.30%P
MGGS	Schillview Garrett			

DAUGHTER CONFORMATION		12/17 HUKI
Legs & Feet +0.88		Excellent
Mammary +1.50		Excellent
Type Merit +1.53		Excellent
Scale	-2	+2

- Tremendous Daughter Fertility at +17.1
- Top Ranking Sire in the UK PLI List August 2017
- Great Production with Positive Components
- Outstanding Health and Management Traits
- Locally bred from the renown Prehen Herd

MASSEY

Co-Op Bosside Massey ET (FULL PEDIGREE)

HB No: 65000063026939



100%HO

FH3256

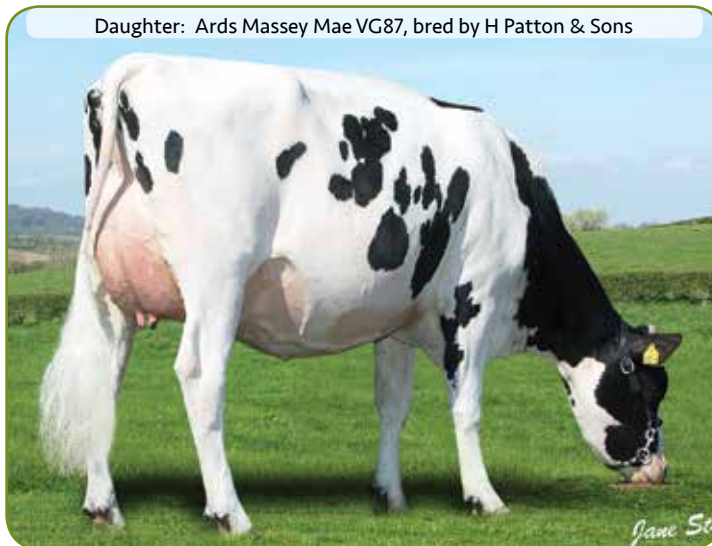
DAUGHTER PROVEN

DOB: 05.02.07

Holstein Interbull Production Proof Dec 2017

Dairy Co Breeding +		PTA 2015 Dec 2017	
PLI	£374	Direct Calving Ease	+0.2
Milk kgs	+461	Fertility Index	-0.1
Fat Kg	+17.4	Lifespan	+0.4
Fat %	-0.01	Somatic Cell Count	-20
Protein Kg	+18.5	TB Advantage	-0.4
Protein %	+0.04	Mastitis Resistance	-2
Daughter Proven		Rel. 96%	

Daughter: Ards Massey Mae VG87, bred by H Patton & Sons



**DAUGHTER
PROVEN**

PEDIGREE

S	Mascol ET			
D	Coyne-Farmes Yelena CRI ET VG85			
1 st Lact.	305D	14338KGM	3.60%F	3.20%P
MGS	Peckenstein Form Bret ET EX94			
MGD	Milkworth Manfred Yadda VG86			
1 st Lact.	305D	13508KGM	4.00%F	3.20%P
2 nd Lact.	305D	11784KGM	4.30%F	3.80%P
MGGs	Shen-Val NV LM Formation ET VG85			

DAUGHTER CONFORMATION		12/17 HUKI
Legs & Feet +0.35		Excellent
Mammary +1.56		Excellent
Type Merit +1.53		Excellent
Scale	-2	+2

- One of the best daughter proven sires available
- Ideal sire for commercial milk producers; no nonsense cows
- Tremendous farmer satisfaction with 495 daughters in 123 UK herds
- Excellent health traits, i.e. longevity
- Average stature cows with strong chest width and wide rumps

CABRIOLET

Co-Op Robust Cabriolet ET (FULL PEDIGREE)

HB No: 65000069560690



HO2504

DAUGHTER PROVEN

DOB: 27.06.11

100%HO

Holstein Interbull Production Proof Dec 2017			
Dairy Co Breeding +		PTA 2015 Dec 2017	
PLI	£586	Direct Calving Ease	+1.0
Milk kgs	+619	Fertility Index	+6.2
Fat Kg	+32.6	Lifespan	+0.5
Fat %	+0.10	Somatic Cell Count	-6
Protein Kg	+22.3	TB Advantage	+1.2
Protein %	+0.03	Mastitis Resistance	+0
Daughter Proven		Rel. 89%	



Daughter: Aardema Cabriolet 7820

Sexed Semen Only



DAUGHTER PROVEN

PEDIGREE

S	Roylane Socra Robust ET VG88			
D	Co-Op Planet Classy ET VG86			
1 st Lact.	305D	11635KGM	4.50%F	3.50%P
2 nd Lact.	305D	13848KGM	3.70%F	3.30%P
MGS	Ensenada Taboo Planet ET EX92			
MGD	Bomaz Ramos 5877 CRI ET VG85			
1 st Lact.	305D	9448KGM	3.70%F	3.30%P
MGGS	Ramos			

DAUGHTER CONFORMATION		12/17 HUKI
Legs & Feet +0.80		Excellent
Mammary +0.85		Excellent
Type Merit +1.19		Excellent
Scale	-2	+2

- Superb production and components
- Excellent in all management traits
- No. 7 UK Daughter Proven Sire

BROOK

VH Balisto Brook (FULL PEDIGREE)

HB No: 6100000258184



100%HO

HO4621

GENOMIC

DOB: 08.03.15

Holstein Genomic Production Proof Dec 2017

Dairy Co Breeding +		PTA 2015 Dec 2017	
PLI	£795	Direct Calving Ease	+0.9
Milk kgs	+497	Fertility Index	+8.9
Fat Kg	+40.5	Lifespan	+0.7
Fat %	+0.25	Somatic Cell Count	-36
Protein Kg	+23.7	TB Advantage	+1.4
Protein %	+0.09	Mastitis Resistance	-6
Young Genomic Pedigree Index		Rel. 66%	



VH Balisto Brook

PEDIGREE

S	De-Su 11236 Balisto ET				
D	Toftegard Denim				
MGS	De-Su Freddie Denim 646 ET				
MGD	Toftegard Ramos				
1 st Lact.	305D	7511KGM	3.34%F	3.15%P	
2 nd Lact.	305D	8872KGM	3.47%F	3.16%P	
3S	Ramos				
3D	Toftegard Oman Sally				
1 st Lact.	305D	11530KGM	3.78%F	3.29%P	

DAUGHTER CONFORMATION		12/17 HUKI
Legs & Feet +0.91		Excellent
Mammary +0.90		Excellent
Type Merit +1.60		Excellent
Scale	-2	+2

- No. 3 in the Top UK PLI Sires
- Massive components with +64.8 Kgs and double digit percentages
- Ideal for Robotic Milking Schemes
- Positive Fertility Index at +8.8
- Positive Lifespan at +0.7 = extra 210 Days Longevity

TARQUIN

Inch Tarquin ET

HB No: 20937005755745

BF1117

88% Friesian

DOB: 26.10.14

Friesian Pedigree Index Dec 2017

Dairy Co Breeding + PTA 2015 Feb 2018

PLI	£463
Milk kgs	+225
Fat Kg	+23.6
Fat %	+0.19
Protein Kg	+15.4
Protein %	+0.11
Friesian Type Pedigree Index	+1.45
Young Pedigree Index	Rel. 41%



PEDIGREE

S	Deangate Tarquin			
D	Inch Blackisle Daphne 2 ET EX92(4)			
6 Lact. Average	302D	10588KGM	5.36%F	3.31%P
MGS	Blackisle Glen Albyn ET BFE			
MGD	Inch Sem Daphne 2 ET VG88			
5 Lact. Average	305D	9806KGM	5.61%F	3.42%P



- Excellent Milk Quality
- Suitable for Cross Breeding
- No. 5 PLI Friesian Available

STORMIN NORMAN

Ravenhill Stormin Norman EX91

HB No: 03000006181978

100% Ayrshire

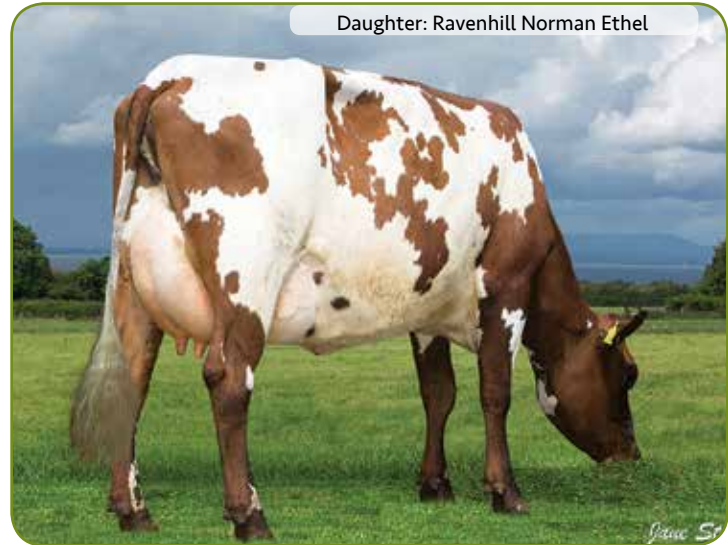
A 9191

DOB: 16.06.12

Ayrshire Pedigree Index Dec 2017

Dairy Co Breeding + PTA 2015 Jan 2018

PLI	£186
Milk kgs	+785
Fat Kg	+23.0
Fat %	-0.11
Protein Kg	+17.3
Protein %	-0.12
Ayrshire Type Pedigree Index	+0.91
Young Pedigree Index	Rel. 38%



PEDIGREE

S Duo Star Normandin

PGS 3-907 T Bruno

D Ravenhill Ethel 382 EX93(4)

3 rd Lact.	305D	13177KGM	3.86%F	3.19%P
6 th Lact.	305D	13352KGM	3.59%F	3.10%P
Average	305D	11260KGM	3.90%F	3.20%P

MGS McCormick Nelson ET

MGD Ravenhill Ethel 324 EX90

3 rd Lact.	305D	9765KGM	4.46%F	3.24%P
3 rd Lact.	305D	10131KGM	4.22%F	3.39%P

3S Royalcroft Brendan



- Exciting Local Ayrshire Bull
- Dam yields up to 13177 Kgs in 305 Days
- Dam EX93, Grand dam EX90
- +785 kg Milk, +40.3 kg Fat + Protein
- Semen exported to New Zealand

FLIPEX

Flipex JB

HB No: 03000006181978



Montbelliarde

MB2083

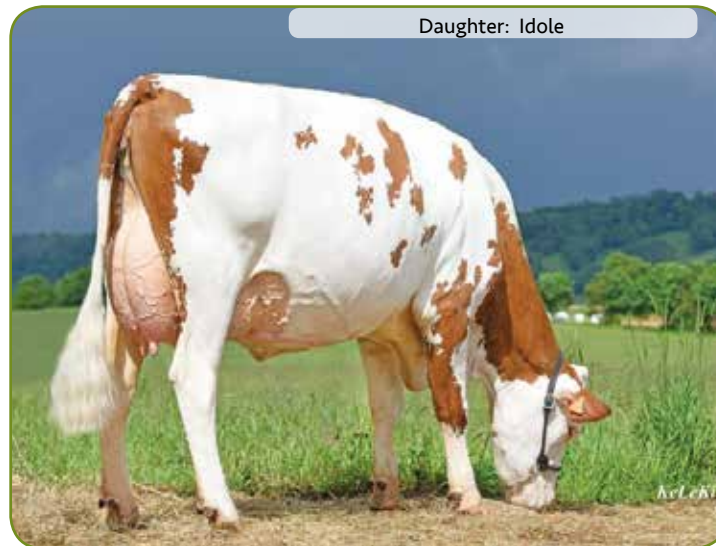
DOB: 16.06.12

Montbelliarde Production Proof France Dec 2017

INEL	40	Synthesis Udder Health	+0.4
Milk kgs	+669	Synthesis Fertility	-0.3
Fat Kg	+30	Longevity	+0.5
Fat %	+0.4	Calving Ease	88
Protein Kg	+33	Calving Ability	88
Protein %	+1.6	Milking Speed	92
ISU	149	Temperament	105

Daughter Proven

Rel. 95%



PEDIGREE

S Triomphe
MGS Redon
3S Micmac



**DAUGHTER
PROVEN**

DAUGHTER CONFORMATION

France 08/17

Total Type	116		Excellent
Body Capacity	102		Good
Rump	86		Good
Feet & Legs	116		Good
Udder	122		Good
Teats	100		Good
Muscularity	99		Good

88

112

- One of the Top Daughter Proven Bulls available
- Production with Components
- Widespread Proof

HARIBO

Haribo

HB No: DE0948636664

SM0214

Fleckvieh

DOB: 22.12.13




Fleckvieh Genomic Production Proof

Germany August 2018

Milk Index	130
Milk kgs	+873
Fat Kg	+50
Fat %	+0.17
Protein Kg	+34
Protein %	+0.04
gTMI	130

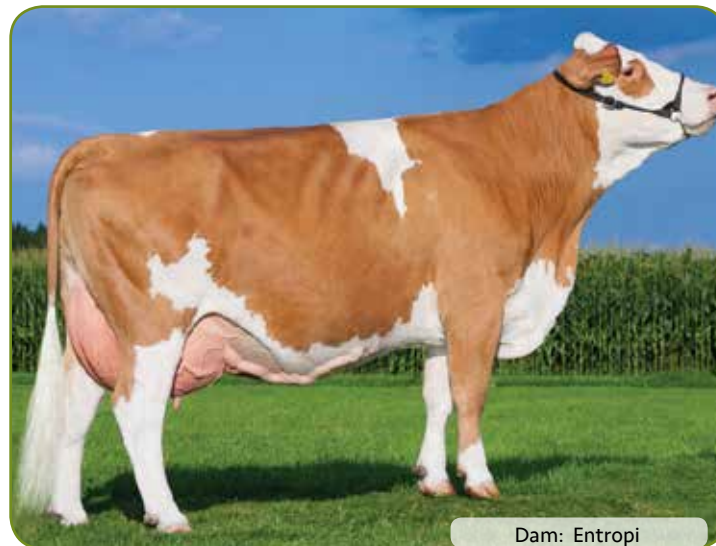
Young Genomic Index Rel. 75%

DAUGHTER CONFORMATION 08/17 Germany

Frame 103		Excellent
Udder 112		Excellent
Feet & Legs 1.18		Excellent
Scale	76	124

PEDIGREE

S Hutera
MGS BFG Rurex



- Top Production Sire for Milk and Components
- Outstanding Leg and Feet Improvements
- Strong robust daughters

VR DALTON

VR DALTON

HB No: 17000036877



Danish Red

RD0947

DOB: 14.09.08

Danish Production Indexes		Denmark Feb 2018	
Production	122	Daughter Fertility	98
Milk	109	Calvings, Sire	96
Fat	121	Calvings, maternal	100
Fat %	113	Udder Health	97
Protein	119	General Health	87
Protein %	114	Longevity	100
Daughter Proven	486 Daughters	Rel. 98%	



PEDIGREE	
S	R Degn
MGS	R Admiral
3S	Ferdi Red



**DAUGHTER
PROVEN**

Danish Conformation Traits		Viking Genetics	
Frame	111		Excellent
Mammary	105		Excellent
Legs & Feet	106		Excellent

90

110

- Widespread daughter proven sire
- Deep bodies with strong Feet and Legs
- Tremendous Farmer Satisfaction

MEDELLIN

Medellin
HB No: FR3556493472



Normandy

N0876

GENOMIC

DOB: 27.04.16

Normandy Production Proof		France Dec 2017	
INEL	48	Udder Health	+0.8
Milk kgs	+749	Clinical Mastitis	+1.0
Fat Kg	+54	Reproduction	+0.4
Fat %	+3.0	Fertility Cows	+0.5
Protein Kg	+36	Interval calving	-0.6
Protein %	+1.0	Longevity	+0.6
ISU	166	Calving Ease	90
Genomic Proof		Rel. 95%	



PEDIGREE

S **Inexces**
MGS **Geyser Isy**
3S **Upanishad**

DAUGHTER CONFORMATION

France 12/17

Total Type Index	+1.0		Excellent
Udder Index	+0.7		Good
Frame	+0.8		Good
Muscularity	+0.4		Good
Feet & Legs	+0.6		Good

88

112

- Top protein and fat kgs
- Healthy Cows
- Strong and deep bodies with wide rumps

<i>Sire</i>	<i>Page</i>
Maestro	2
Orca	3
Alfie	4
Atlas	5
Absolute.....	6
Boycie.....	7
Ace	8
Supersonic.....	9
Cuddy Peaks	10
Gloss.....	11
Instead.....	12
Omen	13
Lancaster	14
Massey	15
Cabriolet	16
Brook	17
Tarquin	18
Stormin Norman	19
Flipex	20
Haribo	21
VR Dalton	22
Medellin.....	23



Ai SERVICES

- NORTHERN IRELAND -

Ballycriagy 671 Antrim Road
 Newtownabbey Co Antrim
 BT36 4RL

Tel: 028 9083 3123

Fax: 028 9084 2640

Web: www.ai-services.co.uk

Email: info@ai-services.co.uk

To Book a Service

Call

Telephone:

FREEPHONE
0800 17 11 11