



**AI SERVICES**  
- NORTHERN IRELAND -



*Beef Sires 2021*

# INDEX

## ABERDEEN ANGUS

3	• Rawburn Jumbo Eric	AA1265
4	• Hallington Endeavour	AA1145
5	Woodvale Network	AA1532
6	• Woodvale Kool Jaguar	AA1377
7	Laheens Prince of Eslin	AA1638
8	• HW Grenade	AA1778
9	• Drumhill Lord Highway	AA1784

## BRITISH BLUE

10	Boroside Incredible	BB1459
11	Boroside Luxury	BB1742
12	Springhill King Kong	BB1574
13	Chatham Ned	BB1802
14	Bluestar Ice	BB1510
15	Knockagh Jubilant	BB1516
16	Bavan Giant	BB1333
17	Lukeroyal Ghost	BB1398

## BRITISH BLONDE

18	Glenvale Harry	BL1093
19	Glacon	BL1119

## CHAROLAIS

20	• Woodpark Paris	CH3980
21	• Solitude Narcos	CH4013
22	Greenall Laughoutloud	CH4012

## CULARD CHAROLAIS

23	Grisy	CH3977
23	Larzac	CH3985

## HEREFORD

24	Solpoll 1 Pounder	H9334
25	• Lisrace Lackey Boy	H9305
26	• Brookfield 1 Romeo	H9283
27	• Graceland 1 Silas	H9260

## LIMOUSIN

28	• Ampertaine Ifor	LN2553
29	• Carmorn Marty	LN2726
30	• Claragh Neymar	LN2815
31	• Lenagh Equaliser	LN2271
32	• Rahoney Umar	LN0132

## SIMMENTAL

33	• Omorga Isaac	SG1278
34	• Shacon Hannibal	SG1290
35	• Slievenagh International	SG1307

## BEEF SHORTHORN

36	Hussar	BS0809
----	--------	--------

## SALERS

37	Horace	SA0879
38	Drumlegagh Oscar	SA0854

## BELTED GALLOWAY

39	Ballylough Bell Boy	Y9031
----	---------------------	-------

## SPECKLE PARK

39	Kilbarry Freddie Flint	SP9986
----	------------------------	--------

## AUBRAC

40	Genet	AU9990
----	-------	--------

## PARTHENAISE

40	Joujou	PS0937
----	--------	--------

## FERTILITY BOOST

41	Triple Mix Belgian Blue	MS8225
41	Triple Mix Aberdeen Angus	MS8228
41	Eric + Network + Lackey Boy	MS8229
41	Grenade + Incredible + Lackey Boy	MS8244
41	Eric + Incredible + Lackey Boy	MS8220
41	Eric + Luxury + Lackey Boy	MS8227
41	Eric + Luxury + Neymar	MS8230
41	Network + Hotspur + Ifor	MS8226
41	Network + Hotspur + Marty	MS8231

## Synchronisation

## Benefits of AI

## Getting the best from AI

## BLUP

## Breedplan

## Bull Comparison Table

- Royalty payable for Pedigree Registration

Whilst every effort is made to ensure the accuracy of all information contained in this catalogue, AI Services (NI) Ltd accepts no responsibility whatsoever for any error, and without prejudice do not accept any liability for losses which may result from any error.

# ERIC

Rawburn Jumbo Eric S297

HB No: UK562106402297

Sire: Netherallan Peter Pershore

DOB: 24.03.16

Dam: Rawburn Joy Erica



- *Top performance sire with EBVs in the top 10% of the breed*
- *Exceptional muscling and overall carcass data*
- *Recommended for crossing on dairy and beef cows*
- *Approved for the Dale Farm / ABP Horizon Programme*

## CALVING SURVEY INFORMATION

on 144 Cows and 33 Heifers	Surveys	177
Mortality	0.0%	Avg Gestation Days 283
Size	Average 75.7%	Above Average 9.6%
Conformation	Average 78.7%	Above Average 13.2%
Non Surgical Vet Asst.	0.6%	Surgical Vet Asst. 0.0%

## FEBRUARY 2021 ABERDEEN ANGUS BREEDPLAN EBVs

EBV	Calv Ease Direct %	Calv Ease Dtrs %	Gest. Len. Days	Birth Wt Kg	200 Day Wt Kg	400 Day Wt Kg	600 Day Wt Kg	Mature Cow Wt Kg	Milk Kg	Scrotal Size cm	Carc. Wt Kg	Eye Mus Area cm2	Fat Depth mm	Retail Beef Yield %	IMF %	Angus Terminal Index GBP	Angus S-Rep Index GBP
EBV	-0.2	+2.0	+1.0	+4.2	+52	+103	+127	+112	+21	+1.4	+87	+5.8	-3.1	+2.4	+0.0	+51	+69
Breed Average EBVs for 2019 Born Calves																	
EBV	-1.2	+0.2	+0.5	+3.2	+39	+70	+86	+81	+11	+1.0	+55	+3.8	-1.3	+1.0	+0.1	+33	+43

# ENDEAVOUR

Hallington Endeavour G136  
 Sire: Netherton Figaro C244  
 Dam: Blelack Ebolass C661

HB No: UK107067700136  
 DOB: 04.04.07



- *Excellent crossing sire on dairy breeds especially Montbelliarde x Holstein or Fleckvieh x Holstein*
- *Exceptional growth rates and muscling in the progeny*
- *Widespread reliable calving survey information*

## CALVING SURVEY INFORMATION

on 148 Cows and 49 Heifers	Surveys	197
Mortality	2.5%	Avg Gestation Days 285
Size	Average 67.2%	Above Average 22.2%
Conformation	Average 71.0%	Above Average 24.6%
Non Surgical Vet Asst.	4.6%	Surgical Vet Asst. 2.6%

## FEBRUARY 2021 ABERDEEN ANGUS BREEDPLAN EBVs

EBV	Calv Ease Direct %	Calv Ease Dtrs %	Gest. Len. Days	Birth Wt Kg	200 Day Wt Kg	400 Day Wt Kg	600 Day Wt Kg	Mature Cow Wt Kg	Milk Kg	Scrotal Size cm	Carc. Wt Kg	Eye Mus Area cm2	Fat Depth mm	Retail Beef Yield %	IMF %	Angus Terminal Index GBP	Angus S-Rep Index GBP
EBV	-1.6	+1.5	-0.7	+4.8	+45	+83	+100	+90	+13	-0.1	+62	+4.2	-2.7	+0.7	+1.1	+37	+47
Breed Average EBVs for 2019 Born Calves																	
EBV	-1.2	+0.2	+0.5	+3.2	+39	+70	+86	+81	+11	+1.0	+55	+3.8	-1.3	+1.0	+0.1	+33	+43



# NETWORK

Woodvale Network R854  
Sire: Wedderlie Net Profit E916  
Dam: Woodvale Nelmerica M471

HB No: UK939271803854  
DOB: 03.05.15



- *Proven calving ease sire for maiden heifers*
- *Suitable for breeding suckler replacements*
- *Calves are vigorous and healthy at birth*
- *Short Gestation Length of 283 days*

## CALVING SURVEY INFORMATION

on 102 Cows and 115 Heifers	Surveys	217
Mortality	2.3%	Avg Gestation Days 283
Size	Average 81.8%	Above Average 9.8%
Conformation	Average 82.6%	Above Average 15.5%
Non Surgical Vet Asst.	3.2%	Surgical Vet Asst. 1.9%

## FEBRUARY 2021 ABERDEEN ANGUS BREEDPLAN EBVs

EBV	Calv Ease Direct %	Calv Ease Dtrs %	Gest. Len. Days	Birth Wt Kg	200 Day Wt Kg	400 Day Wt Kg	600 Day Wt Kg	Mature Cow Wt Kg	Milk Kg	Scrotal Size cm	Carc. Wt Kg	Eye Mus Area cm <sup>2</sup>	Fat Depth mm	Retail Beef Yield %	IMF %	Angus Terminal Index GBP	Angus S-Rep Index GBP
EBV	+3.3	+3.0	-1.9	+0.2	+35	+58	+71	+59	+13	+1.5	+45	+1.6	-1.7	+0.5	-0.1	+27	+41
Breed Average EBVs for 2019 Born Calves																	
EBV	-1.2	+0.2	+0.5	+3.2	+39	+70	+86	+81	+11	+1.0	+55	+3.8	-1.3	+1.0	+0.1	+33	+43

# JAGUAR

Woodvale Kool Jaguar P633  
 Sire: Woodvale Lord Jaguar  
 Dam: Friarstown Kinnannie

HB No: UK939271803633  
 DOB: 01.03.14



- *A proven calving ease sire with over 200 calving surveys*
- *Suitable for breeding replacements*
- *Recommended for cows and heifers for calving ease*

### CALVING SURVEY INFORMATION

on 88 Cows and 120 Heifers	Surveys	208
Mortality	3.4%	Avg Gestation Days 283
Size	Average 74.4%	Above Average 16.3%
Conformation	Average 79.6%	Above Average 16.8%
Non Surgical Vet Asst.	1.9%	Surgical Vet Asst. 1.5%

### FEBRUARY 2021 ABERDEEN ANGUS BREEDPLAN EBVs

EBV	Calv Ease Direct %	Calv Ease Dtrs %	Gest. Len. Days	Birth Wt Kg	200 Day Wt Kg	400 Day Wt Kg	600 Day Wt Kg	Mature Cow Wt Kg	Milk Kg	Scrotal Size cm	Eye Mus Area cm2	Fat Depth mm	Retail Beef Yield %	IMF %	Angus Terminal Index GBP	Angus S-Rep Index GBP
<b>EBV</b>	<b>+1.5</b>	<b>+4.4</b>	<b>-1.0</b>	<b>+3.0</b>	<b>+48</b>	<b>+85</b>	<b>+101</b>	<b>+89</b>	<b>+15</b>	<b>+1.2</b>	<b>+5.0</b>	<b>-1.4</b>	<b>+1.0</b>	<b>+0.4</b>	<b>+41</b>	<b>+57</b>
Breed Average EBVs for 2019 Born Calves																
EBV	-1.2	+0.2	+0.5	+3.2	+39	+70	+86	+81	+11	+1.0	+3.8	-1.3	+1.0	+0.1	+33	+43

# PRINCE OF ESLIN

Laheens Prince of Eslin  
 Sire: Rawburn Jagger Eric R094  
 Dam: Laheens Daisy N365

HB No: IE231362580459  
 DOB: 12.09.17



- *Exceptional carcass weight, well above the breed average*
- *Recommended for pure and cross breeding*
- *Recommended for breeding suckler replacements*

## CALVING SURVEY INFORMATION

on 37 Cows and 7 Heifers	Surveys	44
Mortality	0.0%	Avg Gestation Days 286
Size	Average 72.7%	Above Average 25.0%
Conformation	Average 65.1%	Above Average 32.6%
Non Surgical Vet Asst.	0.0%	Surgical Vet Asst. 2.3%

## FEBRUARY 2021 ABERDEEN ANGUS BREEDPLAN EBVs

	Calv Ease Direct %	Calv Ease Dtrs %	Gest. Len. Days	Birth Wt Kg	200 Day Wt Kg	400 Day Wt Kg	600 Day Wt Kg	Milk Kg	Angus Terminal Index GBP	Angus S-Rep Index GBP
EBV	+0.3	+2.0	-0.6	+3.2	+40	+69	+91	+15	+33	+49
Breed Average EBVs for 2019 Born Calves										
EBV	-1.2	+0.2	+0.5	+3.2	+39	+70	+86	+11	+33	+43

# GRENADE

HW Grenade  
 Sire: Netherton Kraker  
 Dam: Mohmar Gammer Eulanne

HB No: UK546977102535  
 DOB: 01.03.19



- *Impressive Growth and Muscle Index*
- *Smooth fleshing sire with excellent Muscling*
- *Suitable for breeding suckler replacements*
- *Use only on cows until a detailed calving survey is completed*

## PEDIGREE

Sire **Netherton Kraker P790**  
 PGS S A V Brave 8320  
 PGD Netherton Karama K574

Dam **Mohmar Gammer Eulanne N181**  
 MGS S A V Solid Gold 9187  
 MGD Kitewood Gammer Eulanne K122

FEBRUARY 2021 ABERDEEN ANGUS BREEDPLAN EBVs															
EBV	Calv Ease Direct %	Calv Ease Dtrs %	Birth Wt Kg	200 Day Wt Kg	400 Day Wt Kg	600 Day Wt Kg	Mature Cow Wt Kg	Milk Kg	Scrotal Size cm	Eye Mus Area cm <sup>2</sup>	Fat Depth mm	Retail Beef Yield %	IMF %	Angus Terminal Index GBP	Angus S-Rep Index GBP
EBV	-0.3	+3.8	+4.3	+50	+86	+103	+86	+14	+1.7	+4.9	-0.8	+1.0	+0.5	+40	+54
Breed Average EBVs for 2019 Born Calves															
EBV	-1.2	+0.2	+3.2	+39	+70	+86	+81	+11	+1.0	+3.8	-1.3	+1.0	+0.1	+33	+43



# HIGHWAY

Drumhill Lord Highway V271

HB No: UK959342703271

Sire: Wedderlie Tarquin L383

DOB: 24.04.19

Dam: Drumhill Lady Heather P366



- *Lord Highway is bred from a successful and proven cow family*
- *Tremendous indexes for both Terminal and Maternal*
- *Suitable for breeding replacements for the suckler herd*
- *Use only on cows until a detailed calving survey is completed*

## PEDIGREE

Sire **Wedderlie Tarquin L383**

PGS Papa Equator 2928

PGD HF Tibbie 86K

Dam **Drumhill Lady Heather P366**

MGS Blelack Prince Consort A286

MGD Blelack Lady Heather J169

## FEBRUARY 2021 ABERDEEN ANGUS BREEDPLAN EBVs

EBV	Calv Ease Direct %	Calv Ease Dtrs %	Birth Wt Kg	200 Day Wt Kg	400 Day Wt Kg	600 Day Wt Kg	Mature Cow Wt Kg	Milk Kg	Scrotal Size cm	Eye Mus Area cm2	Fat Depth mm	Retail Beef Yield %	IMF %	Angus Terminal Index GBP	Angus S-Rep Index GBP
EBV	-1.6	-2.7	+4.3	+48	+89	+102	+79	+19	+1.7	+4.6	-2.8	+1.9	+0.1	+43	+51
Breed Average EBVs for 2019 Born Calves															
EBV	-1.2	+0.2	+3.2	+39	+70	+86	+81	+11	+1.0	+3.8	-1.3	+1.0	+0.1	+33	+43

# INCREDIBLE

Boroside Incredible HB No: IE371479981207  
 Sire: Rutabaga Beaffaux Int'l ID: BBLIRLM371479981207  
 Dam: Ballydownan Winny ET DOB: 01.01.14

Irish Blue



- Progeny have exceptional colour marking, growth and muscling
- Calves achieving market-topping prices
- Recommended on most types of dairy cows
- Very high farmer satisfaction with progeny

## CALVING SURVEY INFORMATION

on 154 Cows and 3 Heifers	Surveys	157
Mortality	2.5%	Avg Gestation Days 287
Size	Average 58.0%	Above Average 35.0%
Conformation	Average 53.8%	Above Average 44.2%
Non Surgical Vet Asst.	0.6%	Surgical Vet Asst. 2.5%

## JANUARY 2021 ICBF EUROSTAR RATINGS

	Replacement Index	Terminal Index	Dairy Beef	Calving Difficulty on Heifers	Calving Difficulty on Cows	Docility	Carcass Weight Kg	Carcass Conformation	Daughter Calving Difficulty	Daughter Milk Kg	Dtr Calving Interval Days
Star Rating Within BB Breed	★★★	★★★★★	★★★★★			★★★	★★★★★	★★★★★		★★	★
€urovalue	€56	+€182	+€144	19.2%	7.3%	+0.14	+40.9	+3.00	11.26%	+2.90	+7.66
Index Reliability %	47	52	48	44	72	56	52	50	59	43	38
Star Rating Across all Beef Breeds	★★	★★★★★	★★★★★			★★★★★	★★★★★	★★★★★		★★★	★

# LUXURY

Boroside Luxury ET  
 Sire: Mannequin de Sberchamps  
 Dam: Boroside Glenda ET  
 HB No: IE372215083231556  
 Int'l ID: BBLRLM215083231556  
 DOB: 15.09.17

Irish Blue



- *Luxury displays impressive breed type*
- *Excellent performance figures for Carcass Weight*
- *Superb muscling throughout*
- *Use with caution until a detailed calving survey is completed*
- *First calves are normal calving and display good colour marking*

## PEDIGREE

Sire **Mannequin de Sberchamps**  
 PGS Accord de Wihogne  
 PGD Harpe de Sberchamps  
 Dam **Boroside Glenda ET**  
 MGS Jackpot 9831 ET Ter Reybroeck  
 MGD Rosemount Daisy

## JANUARY 2021 ICBF EUROSTAR RATINGS

	Replacement Index	Terminal Index	Dairy Beef	Calving Difficulty on Heifers	Calving Difficulty on Cows	Docility	Carcass Weight Kg	Carcass Conformation	Daughter Calving Difficulty	Daughter Milk Kg	Dtr Calving Interval Days
Star Rating Within BB Breed	★★★★★	★★★★★	★★★			★★★★★	★★★★★	★★★		★★★★★	★★
eurovalue	€103	+€171	+€39	16.1%	8.8%	+0.22	+40.3	+2.84	7.02%	+4.70	+6.07
Index Reliability %	43	48	46	40	69	45	48	42	54	36	35
Star Rating Across all Beef Breeds	★★★★	★★★★★	★★★			★★★★★	★★★★★	★★★★★		★★★★★	★



# KING KONG

Springhill King Kong  
 Sire: Springhill Ever Ready  
 Dam: Springhill Fly

HB No: B-20151224  
 Ear No: UK933262904163  
 DOB: 28.10.15

British Blue



- *EBVs suggest progeny will have above average weight gain and muscling*
- *Early calving survey information suggests calving ease*
- *Suitable for dairy cows*

## CALVING SURVEY INFORMATION

on 36 Cows	Surveys	36
Mortality	0.0%	Avg Gestation Days 288
Size	Average 63.9%	Above Average 30.6%
Conformation	Average 63.9%	Above Average 33.3%
Non Surgical Vet Asst.	2.8%	Surgical Vet Asst. 0.0%

## FEBRUARY 2021 BRITISH BLUE BREEDPLAN EBVs

	Calv Ease Direct %	Calv Ease Dtrs %	Gest. Len. Days	Birth Wt Kg	200 Day Wt Kg	400 Day Wt Kg	600 Day Wt Kg	Scrotal Size cm	Eye Mus Area cm2	Fat Depth mm	Retail Beef Yield %	BBB Carcase Profitability Index GBP	BBB Pedigree Breeding Index GBP
EBV	-1.8	-1.2	+0.5	+3.7	+18	+32	+49	+0.5	+2.2	+0.0	+0.7	+19	+7
Breed Average EBVs for 2019 Born Calves													
EBV	-0.7	-0.5	+0.6	+2.3	+13	+22	+32	+0.2	+1.5	+0.0	+0.4	+13	+6



# NED

Chatham Ned  
Sire: Chatham Karl  
Dam: Chatham Grace

HB No: B-20180498  
Ear No: UK917081839042  
DOB: 15.05.18



British Blue

- *Chatham Ned displays exceptional Length and Muscling*
- *Excellent EBVs for Growth and Overall Index*
- *Ned is in the top 1% of the breed for Carcase Profitability*
- *Use on cows only until a detailed calving survey is completed*

## PEDIGREE

Sire **Chatham Kerl**  
PGS Kersey Geronimo  
PGD Chatham Frolic  
  
Dam **Chatham Grace**  
MGS Paulern Verdi  
MGD Chatham Beryl

## FEBRUARY 2021 BRITISH BLUE BREEDPLAN EBVs

	Calv Ease Direct %	Calv Ease Dtrs %	Birth Wt Kg	200 Day Wt Kg	400 Day Wt Kg	600 Day Wt Kg	Scrotal Size cm	Eye Mus Area cm <sup>2</sup>	Fat Depth mm	Retail Beef Yield %	BBB Carcase Profitability Index GBP	BBB Pedigree Breeding Index GBP
EBV	+0.8	+0.2	+2.5	+20	+35	+53	+0.4	+1.6	-0.1	+0.4	+24	+17
Breed Average EBVs for 2019 Born Calves												
EBV	-0.7	-0.5	+2.3	+13	+22	+32	+0.2	+1.5	+0.0	+0.4	+13	+6

# ICE

Bluestar Ice  
Sire: Tamhorn Sumo  
Dam: Bluestar Essie ET

HB No: IE111057690948  
DOB: 22.09.14

Irish Blue



- *Performance Data indicates 5 star rating for Carcase Weight and Conformation*
- *Early calving information suggests suitability for suckler beef cows*
- *Above average progeny growth and conformation*

## PEDIGREE

Sire **Tamhorn Sumo**  
PGS RY Ossogne Affute  
PGD Leverhulme Nimbus

Dam **Bluestar Essie ET**  
MGS Jalon de Martinpre  
MGD Firmount Connie ET

## JANUARY 2021 ICBF EUROSTAR RATINGS

	Replacement Index	Terminal Index	Dairy Beef	Calving Difficulty on Heifers	Calving Difficulty on Cows	Docility	Carcass Weight Kg	Carcass Conformation	Daughter Calving Difficulty	Daughter Milk Kg	Dtr Calving Interval Days
Star Rating Within BB Breed	★★★★★	★★★★★	★★★★★			★★★★	★★★★★	★★		★★★★★	★★★★★
eurovalue	€129	+€200	+€119	13.2%	5.7%	+0.17	+46.7	+2.75	11.27%	+5.80	+2.72
Index Reliability %	45	50	45	40	70	46	52	46	56	41	37
Star Rating Across all Beef Breeds	★★★★★	★★★★★	★★★★★			★★★★★	★★★★★	★★★★★		★★★★	★

# JUBILANT

Knockagh Jubilant  
Sire: Twyning Ash Ukelele  
Dam: Knockagh Fancy Pants

HB No: B-20141285  
Ear No: UK902043409434  
DOB: 04.12.14

British Blue



Twyning Ash Ukelele, sire of Jubilant

- *Proven calving ease sire for dairy cows*
- *In the top 5% of the breed for Direct Calving Ease*
- *Suitable for crossing on most types of dairy cows*
- *Short gestation length at 283 days*

## CALVING SURVEY INFORMATION

on 36 Cows		Surveys	36
Mortality	0.0%	Avg Gestation Days	283
Size	Average 73.0%	Above Average	18.9%
Conformation	Average 60.5%	Above Average	36.8%
Non Surgical Vet Asst.	0.0%	Surgical Vet Asst.	0.0%

## FEBRUARY 2021 BRITISH BLUE BREEDPLAN EBVs

	Calv Ease Direct %	Calv Ease Dtrs %	Birth Wt Kg	200 Day Wt Kg	400 Day Wt Kg	600 Day Wt Kg	BBB Carcase Profitability Index GBP	BBB Pedigree Breeding Index GBP
EBV	+1.9	+1.1	+1.1	+14	+25	+37	+21	+21
Breed Average EBVs for 2019 Born Calves								
EBV	-0.7	-0.5	+2.3	+13	+22	+32	+13	+6

# GIANT

Bavan Giant ET HB No: H-20112060  
 Sire: Auchenlay Vagabond (SR) ET Ear No: UK942172505187  
 Dam: Faughanvale Cynthia ET DOB: 13.11.11

British Blue



- *Superb muscling throughout*
- *Excellent performance figures for growth*
- *First calves are impressive with exceptional calf quality*
- *Recommended for use on suckler cows only*

## CALVING SURVEY INFORMATION

on 20 Cows		Surveys	20
Mortality	0.0%	Avg Gestation Days	291
Size	Average 70.0%	Above Average	25.0%
Conformation	Average 57.9%	Above Average	42.1%
Non Surgical Vet Asst.	5.0%	Surgical Vet Asst.	0.0%

## FEBRUARY 2021 BRITISH BLUE BREEDPLAN EBVs

EBV	Calv Ease Direct %	Calv Ease Dtrs %	Birth Wt Kg	200 Day Wt Kg	400 Day Wt Kg	600 Day Wt Kg	Scrotal Size cm	Eye Mus Area cm <sup>2</sup>	Fat Depth mm	Retail Beef Yield %	IMF %	BBB Carcase Profitability Index GBP	BBB Pedigree Breeding Index GBP
EBV	-2.6	-1.7	+5.3	+27	+38	+57	+0.4	+1.2	+0.4	+0.1	+0.1	+17	+0
Breed Average EBVs for 2019 Born Calves													
EBV	-0.7	-0.5	+2.3	+13	+22	+32	+0.2	+1.5	+0.0	+0.4	+0.1	+13	+6



# GHOST

Lukeroyal Ghost  
Sire: Mountjoy Utopia  
Dam: Lukeroyal Tulip ET

HB No: B-20111276  
Ear No: UK906285007575  
DOB: 18.06.11



British Blue

- *Excellent muscling with well developed hindquarters*
- *Recommended for use on suckler cows*
- *Progeny are easily calved on cows*

## CALVING SURVEY INFORMATION

on 26 Cows	Surveys	26
Mortality	0.0%	Avg Gestation Days 287
Size	Average 61.5%	Above Average 30.8%
Conformation	Average 56.0%	Above Average 40.0%
Non Surgical Vet Asst.	0.0%	Surgical Vet Asst. 3.8%

## FEBRUARY 2021 BRITISH BLUE BREEDPLAN EBVs

EBV	Calv Ease Direct %	Calv Ease Dtrs %	Gest. Len. Days	Birth Wt Kg	200 Day Wt Kg	400 Day Wt Kg	600 Day Wt Kg	Scrotal Size cm	Eye Mus Area cm <sup>2</sup>	Fat Depth mm	Retail Beef Yield %	IMF %	BBB Carcase Profitability Index GBP	BBB Pedigree Breeding Index GBP
EBV	-0.6	-0.6	-0.7	+1.6	+13	+21	+28	+0.5	-0.1	+0.0	-0.3	+0.2	+9	+3
Breed Average EBVs for 2019 Born Calves														
EBV	-0.7	-0.5	+0.6	+2.3	+13	+22	+32	+0.2	+1.5	+0.0	+0.4	+0.1	+13	+6

# HARRY

Glenvale Harry  
Sire: Budore Utah  
Dam: Glenvale Ellie

HB No: 42-0007  
Ear No: UK952105 0762-7  
DOB: 24.01.12



- *Exceptional muscle development*
- *Excellent shape and style*
- *Superb example of the Blonde breed*
- *Tremendous farmer satisfaction*
- *Recommended for crossing on suckler cows*

## CALVING SURVEY INFORMATION

on 134 Cows and 73 Heifers	Surveys	207
Mortality	1.9%	Avg Gestation Days 295
Size	Average 66.5%	Above Average 24.6%
Conformation	Average 71.1%	Above Average 25.8%
Non Surgical Vet Asst.	3.4%	Surgical Vet Asst. 2.4%

## JANUARY 2021 ICBF EUROSTAR RATINGS

	Replacement Index	Terminal Index	Dairy Beef	Calving Difficulty on Heifers	Calving Difficulty on Cows	Docility	Carcass Weight Kg	Carcass Conformation	Daughter Calving Difficulty	Daughter Milk Kg	Dtr Calving Interval Days
Star Rating Within BLQ Breed	★	★★★★	★★★★			★★★★	★★★★★	★★★★★		★	★
€urovalue	-€28	+€139	+€110	13.2%	5.2%	+0.00	+29.8	+2.25	4.75%	-15.3	+4.10
Index Reliability %	58	71	55	49	81	71	81	76	60	53	45
Star Rating Across all Beef Breeds	★	★★★★★	★★★★★			★★★	★★★★★	★★★★★		★	★

# GLACON

Glacon  
Sire: Poker  
Dam: Chantilly

HB No: FR6413181065  
DOB: 05.09.11



French Blonde

- *Exceptional Conformation*
- *Very Easy Calving*
- *Excellent Kill-Out Rates*
- *Recommended for Early Beef Finishing*
- *Suitable for Holstein cows or Sucklers with Holstein Bloodlines*

## PEDIGREE

Sire **Poker**  
PGS Eder  
PGD Heroine  
  
Dam **Chantilly**  
MGS Nicodeme  
MGD Tarte

## JANUARY 2021 ICBF EUROSTAR RATINGS

	Replacement Index	Terminal Index	Dairy Beef	Calving Difficulty on Heifers	Calving Difficulty on Cows	Docility	Carcass Weight Kg	Carcass Conformation	Daughter Calving Difficulty	Daughter Milk Kg	Dtr Calving Interval Days
Star Rating Within BLQ Breed	★★★	★★★	★★★★★			★★	★	★★★★★		★	★★★★
eurovalue	+€56	+€133	+€122	5.2%	0.9%	-0.07	+14.9	+2.49	5.56%	-7.7	-0.71
Index Reliability %	44	52	45	53	64	43	55	51	51	43	36
Star Rating Across all Beef Breeds	★★	★★★★★	★★★★★			★	★★★	★★★★★		★	★★★



# PARIS

Woodpark Paris  
Sire: Deeside Gulliver  
Dam: Woodpark Faith

HB No: MBM0081113  
Ear Tag: UK963039125861  
DOB: 09.07.19



**NEW**

- *Woodpark Paris combines performance with style and shape*
- *Exceptional Eye Muscle and Retail Beef Values*
- *Top 5% EBV Values for Terminal and Replacement Index*
- *Use on cows only until a detailed calving survey is completed*

## PEDIGREE

Sire **Deeside Gulliver**  
PGS Esperanto  
PGD Blakestown Venus  
  
Dam **Woodpark Faith**  
MGS Rumsden Tsar  
MGD Woodpark Regina

## FEBRUARY 2021 CHAROLAIS BREEDPLAN EBVs

	Calv Ease Direct %	Calv Ease Dtrs %	Birth Wt Kg	200 Day Wt Kg	400 Day Wt Kg	600 Day Wt Kg	200 Day Milk Kg	Scrotal Size cm	Carcase Wt Kg	Eye Mus Area cm <sup>2</sup>	Fat Depth mm	Retail Beef Yield %	IMF %	BCCS Terminal Index GBP	BCCS Self Replacing Index GBP
<b>EBV</b>	<b>+9.1</b>	<b>-6.3</b>	<b>+4.0</b>	<b>+38</b>	<b>+67</b>	<b>+79</b>	<b>+7</b>	<b>+0.3</b>	<b>+60</b>	<b>+4.6</b>	<b>-0.8</b>	<b>+2.0</b>	<b>+0.0</b>	<b>+68</b>	<b>+60</b>
Breed Average EBVs for 2019 Born Calves															
EBV	+1.8	-0.6	+2.6	+29	+49	+57	+9	-0.1	+45	+3.4	-0.4	+1.2	-0.1	+45	+41



# NARCOS

Solitude Narcos HB No: MBM0075092  
 Sire: Blelack Blackberet Ear Tag: UK933001330226  
 Dam: Goldstar Guadalupe DOB: 18.09.17



Charolais

- *Narcos' sire is a renowned calving ease sire*
- *Above average growth with excellent carcass yield*
- *Recommended for breeding replacements*
- *Use with caution until a detailed calving survey is completed*

## CALVING SURVEY INFORMATION

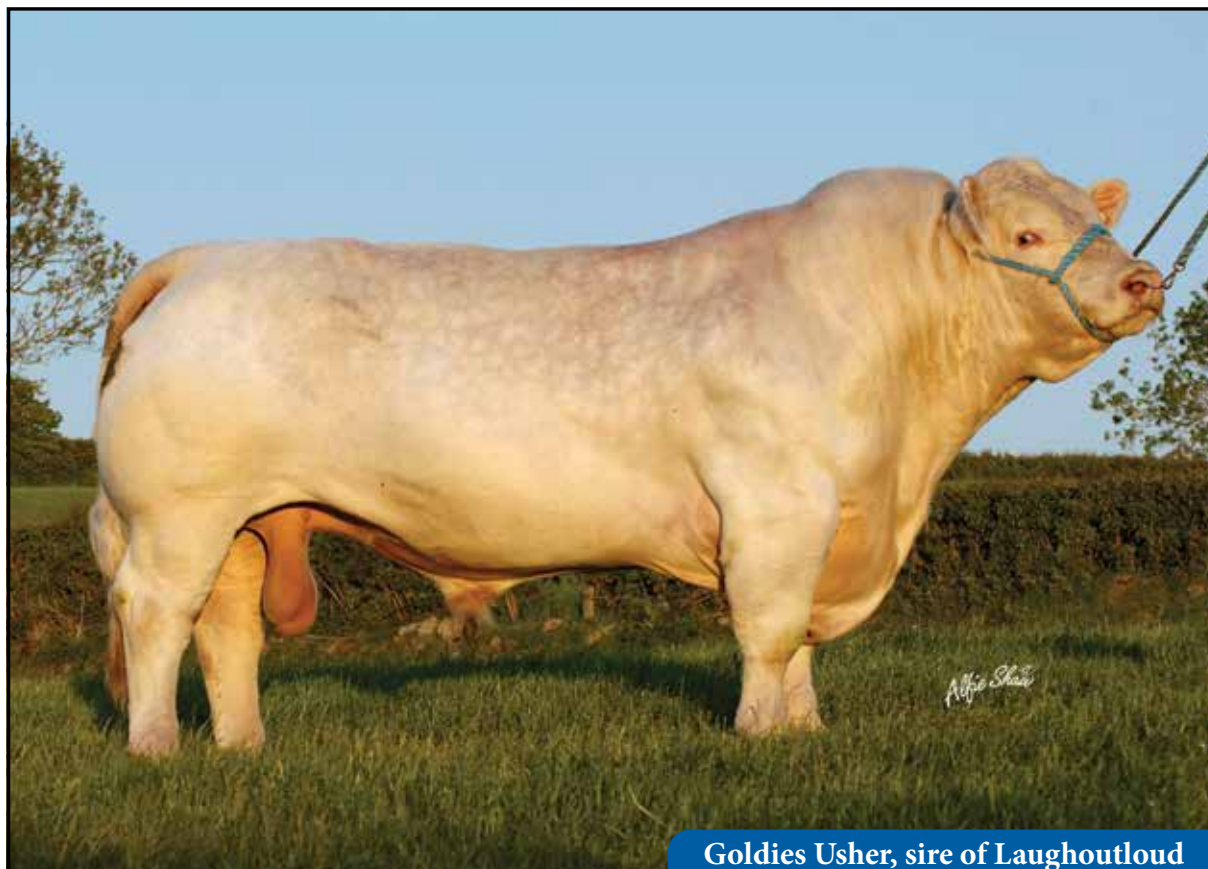
on 27 Cows	Surveys	27
Mortality	0.0%	Avg Gestation Days 292
Size	Average 55.6%	Above Average 33.3%
Conformation	Average 69.2%	Above Average 26.9%
Non Surgical Vet Asst.	7.4%	Surgical Vet Asst. 0.0%

## FEBRUARY 2021 CHAROLAIS BREEDPLAN EBVs

EBV	Calv Ease Direct %	Calv Ease Dtrs %	Gest. Len. Days	Birth Wt Kg	200 Day Wt Kg	400 Day Wt Kg	600 Day Wt Kg	200 Day Milk Kg	Scrotal Size cm	Carcase Wt Kg	Eye Mus Area cm2	Fat Depth mm	Retail Beef Yield %	IMF %	BCCS Terminal Index GBP	BCCS Self Replacing Index GBP
EBV	+2.2	-6.3	-0.4	+2.7	+35	+59	+75	+15	+0.2	+56	+3.9	-0.6	+1.6	+0.2	<b>+60</b>	<b>+51</b>
Breed Average EBVs for 2019 Born Calves																
EBV	+1.8	-0.6	+0.8	+2.6	+29	+49	+57	+9	-0.1	+45	+3.4	-0.4	+1.2	-0.1	+45	+41

# LAUGHOUTLOUD

Greenall Laughoutloud HB No: MBM0064806  
 Sire: Goldies Usher Ear Tag: UK564379700238  
 Dam: Greenall Cairistania DOB: 10.01.15



Goldies Usher, sire of Laughoutloud

- *Laughoutloud is sired by Goldies Usher, whose sons have sold to 22,000 gns*
- *Good Growth Rates with above average Muscling*
- *Excellent farmer comments on the growth and conformation of progeny*

## CALVING SURVEY INFORMATION

on 155 Cows and 11 Heifers Surveys 166  
 Mortality 0.0% Avg Gestation Days 290  
 Size Average 69.1% Above Average 25.5%  
 Conformation Average 68.8% Above Average 26.9%  
 Non Surgical Vet Asst. 1.8% Surgical Vet Asst. 4.8%

## FEBRUARY 2021 CHAROLAIS BREEDPLAN EBVs

	Calv Ease Direct %	Calv Ease Dtrs %	Gest. Len. Days	Birth Wt Kg	200 Day Wt Kg	400 Day Wt Kg	600 Day Wt Kg	Mature Cow Wt Kg	200 Day Milk Kg	Scrotal Size cm	Carcase Wt Kg	Eye Mus Area cm2	Fat Depth mm	Retail Beef Yield %	IMF %	BCCS Terminal Index GBP	BCCS Self Replacing Index GBP
EBV	+11.5	-1.6	+0.4	+3.4	+31	+49	+58	+46	+8	-0.7	+45	+5.0	-0.5	+2.2	-0.5	+58	+52
Breed Average EBVs for 2019 Born Calves																	
EBV	+1.8	-0.6	+0.8	+2.6	+29	+49	+57	+56	+9	-0.1	+45	+3.4	-0.4	+1.2	-0.1	+45	+41

# GRISY

Grisy  
Sire: Ucello  
Dam: Imail

HB No: FR6950643724  
DOB: 30.07.11



- *Tremendous Muscling Ability*
- *Above Average Growth*
- *High Carcass Value*
- *Average Calving Ease*
- *Excellent Conformation*
- *Not recommended for pure breeding*

## FRENCH PERFORMANCE DATA

Calving Ease	Early Muscularity Conformation	Calf Size	Fine Bones	Carcass Growth	Carcass Conformation	Total Merit for Beef Abilities	Economic Proof for Beef Abilities
105	112	91	103	104	112	111	€55

# LARZAC

Larzac EXC  
Sire: Domino  
Dam: Ucello

Not for Pedigree Use  
HB No: FR1216158964  
DOB: 16.09.15



- *Recommended as a Calving Ease sire*
- *Suitable for crossing on Holstein cows*
- *Calves are small at birth, but show good growth and muscling*
- *Not recommended for pure breeding*

## FRENCH PERFORMANCE DATA

Calving Ease	Early Muscularity Conformation	Calf Size	Fine Bones	Carcass Growth	Carcass Conformation	Total Merit for Beef Abilities	Economic Proof for Beef Abilities
115	106	88	108	103	110	108	€40



# POUNDER

Solpoll 1 Pounder  
Sire: Panmure 1 Henry  
Dam: Solpoll 1 Dainty F16

HB No: UK933001329515  
DOB: 26.09.16



- *Widespread calving survey data with excellent results*
- *Excellent growth and muscling*
- *Sutiable for dairy and suckler cows*
- *Impressive progeny on local farms*

## CALVING SURVEY INFORMATION

on 171 Cows and 19 Heifers	Surveys	190
Mortality	1.8%	Avg Gestation Days 287
Size	Average 69.9%	Above Average 25.3%
Conformation	Average 78.5%	Above Average 19.9%
Non Surgical Vet Asst.	1.6%	Surgical Vet Asst. 1.6%

## FEBRUARY 2021 HEREFORD BREEDPLAN EBVs

EBV	Calv Ease Direct %	Calv Ease Dtrs %	Gest. Len. Days	Birth Wt Kg	200 Day Wt Kg	400 Day Wt Kg	600 Day Wt Kg	200 Day Milk Kg	Scrotal Size cm	Carcase Wt Kg	Eye Mus Area cm2	Rib Fat mm	Retail Beef Yield %	IMF %	Hereford Terminal Index GBP	Hereford Self Replacing Index GBP
EBV	+0.6	-4.2	+1.0	+4.6	+47	+81	+103	+14	+0.7	+77	+4.3	-0.9	+2.0	-0.5	+46	+54
Breed Average EBVs for 2019 Born Calves																
EBV	-0.3	-0.4	+0.8	+2.4	+27	+50	+63	+6	+0.8	+41	+2.1	-0.1	+0.4	-0.1	+25	+31

# LACKEY BOY

Lisrace Lackey Boy 11th  
 Sire: Knockmountagh Master  
 Dam: Lisrace Bridge Girl VIII

HB No: UK948192712133  
 DOB: 14.04.17



- *First calves born easily with good conformation*
- *Recommended for dairy cows and suitable for breeding suckler replacements*
- *Above average growth rates*
- *High farmer satisfaction with progeny*

## CALVING SURVEY INFORMATION

on 90 Cows and 4 Heifers	Surveys	94
Mortality	0.0%	Avg Gestation Days 284
Size	Average 67.0%	Above Average 26.6%
Conformation	Average 73.6%	Above Average 24.2%
Non Surgical Vet Asst.	0.0%	Surgical Vet Asst. 0.0%

## FEBRUARY 2021 HEREFORD BREEDPLAN EBVs

	Calv Ease Direct %	Calv Ease Dtrs %	Ges. Len. Days	Birth Wt Kg	200 Day Wt Kg	400 Day Wt Kg	600 Day Wt Kg	Scrotal Size cm	Eye Mus Area cm <sup>2</sup>	Rib Fat mm	Retail Beef Yield %	IMF %	Hereford Terminal Index GBP	Hereford Self Replacing Index GBP
EBV	-1.0	+0.4	+1.1	+2.8	+27	+50	+72	+1.1	+2.2	+0.5	+0.4	+0.2	+29	+35
Breed Average EBVs for 2019 Born Calves														
EBV	-0.3	-0.4	+0.8	+2.4	+27	+50	+63	+0.8	+2.1	-0.1	+0.4	-0.1	+25	+31

# ROMEO

Brookfield 1 Romeo (P) AI HB No: UK933287500192  
 Sire: Normanton 1 Laertes (P) AI ET DOB: 19.04.18  
 Dam: Graceland 1 Freda (P)



- *Sired by one of the best bulls of the breed, winning many championships throughout the United Kingdom*
- *Exceptionally low birth weights are suggested in his EBVs*
- *Locally bred sire*
- *Use with caution until a detailed calving survey is completed*

## PEDIGREE

Sire **Normanton 1 Laertes (P) AI ET**  
 PGS Romany 1 Distiller A84 D53 (P)  
 PGD Normanton 1 Jews Ear C21

Dam **Graceland 1 Freda (P)**  
 MGS Udel 1 R51 WWW Dot (P) AI  
 MGD Graceland 1 Ivy (P)

## FEBRUARY 2021 HEREFORD BREEDPLAN EBVs

EBV	Calv Ease Direct %	Calv Ease Dtrs %	Gest. Len. Days	Birth Wt Kg	200 Day Wt Kg	400 Day Wt Kg	600 Day Wt Kg	200 Day Milk Kg	Scrotal Size cm	Eye Mus Area cm2	Rib Fat mm	Retail Beef Yield %	IMF %	Hereford Terminal Index GBP	Hereford Self Replacing Index GBP
EBV	-2.6	+2.5	+0.3	+1.9	+23	+49	+63	+9	+1.7	+3.4	-1.1	+1.7	-0.4	<b>+29</b>	<b>+36</b>
Breed Average EBVs for 2019 Born Calves															
EBV	-0.3	-0.4	+0.8	+2.4	+27	+50	+63	+6	+0.8	+2.1	-0.1	+0.4	-0.1	+25	+31



# SILAS

Graceland 1 Silas  
Sire: Blakesley 1 Nathan (P)  
Dam: Graceland 1 Lydia (P)

HB No: UK924024809644  
DOB: 15.06.19



Hereford

- *Style, shape and performance all combine into Silas*
- *Top priced sire at the spring 2021 sale*
- *Well above average Growth and Muscling*
- *Use only on cows until a detailed calving survey is completed*

## PEDIGREE

Sire **Blakesley 1 Nathan (P)**  
PGS Aland Leopold (P)  
PGD Blakesley 1 Joy (P)  
  
Dam **Graceland 1 Lydia (P)**  
MGS Greenyards 1 Dougie (P)  
MGD Graceland 1 Emma (P)

## FEBRUARY 2021 HEREFORD BREEDPLAN EBVs

	Calv Ease Direct %	Calv Ease Dtrs %	Birth Wt Kg	200 Day Wt Kg	400 Day Wt Kg	600 Day Wt Kg	200 Day Milk Kg	Scrotal Size cm	Eye Mus Area cm <sup>2</sup>	Rib Fat mm	Retail Beef Yield %	IMF %	Hereford Terminal Index GBP	Hereford Self Replacing Index GBP
<b>EBV</b>	<b>-2.7</b>	<b>-0.8</b>	<b>+3.9</b>	<b>+33</b>	<b>+60</b>	<b>+76</b>	<b>+8</b>	<b>+2.3</b>	<b>+2.7</b>	<b>+0.0</b>	<b>+0.4</b>	<b>+0.0</b>	<b>+29</b>	<b>+36</b>
Breed Average EBVs for 2019 Born Calves														
EBV	-0.3	-0.4	+2.4	+27	+50	+63	+6	+0.8	+2.1	-0.1	+0.4	-0.1	+25	+31

# IFOR

Ampertaine Ifor  
 Sire: Ampertaine Foreman  
 Dam: Ampertaine Vera

Ear Tag: UK 9564385/889-7  
 HB No: MGD13-8897  
 DOB: 26.09.13



Limousin

- *Superb Limousin sire by the 38,000 gns sire, Ampertaine Foreman*
- *Excellent well balanced bull with impressive muscle and shape*
- *Suitable for pedigree breeding*
- *Widespread Calving Survey completed*

## CALVING SURVEY INFORMATION

on 162 Cows and 45 Heifers	Surveys	207
Mortality	3.4%	Avg Gestation Days 292
Size	Average 68.2%	Above Average 22.4%
Conformation	Average 74.1%	Above Average 22.2%
Non Surgical Vet Asst.	2.9%	Surgical Vet Asst. 2.9%

BLUP Date 03.11.20	Birth Weight	Calving Ease	Maternal Calving Ease	Gestation Length	Scrotal Circ.	200 Day Milk	Docility	200 Day Growth	400 Day Growth	Muscle Depth	Fat Depth	Beef Value
EBV	-1.2	-0.8	+0.4	-3.0	-0.4	+2.0	-3.6	+11	+34	+1.2	+0.1	+41
Acc %	84	83	65	95	70	57	58	88	78	74	69	81

# MARTY

Carmorn Marty  
Sire: Mullary Intrepid  
Dam: Carmorn Elsie

Ear Tag: UK9063073/1395-2  
HB No: MCN16-3952  
DOB: 16.09.16



- *Excellent crossing sire for suckler cows*
- *Progeny display lots of muscling and growth*
- *Recommended for earlier finishing schemes*

## CALVING SURVEY INFORMATION

on 132 Cows and 72 Heifers	Surveys	204
Mortality	3.4%	Avg Gestation Days 292
Size	Average 67.7%	Above Average 22.7%
Conformation	Average 70.8%	Above Average 27.1%
Non Surgical Vet Asst.	3.4%	Surgical Vet Asst. 3.0%

BLUP Date 03.11.20	Birth Weight	Calving Ease	Maternal Calving Ease	Gestation Length	Scrotal Circ.	200 Day Milk	Docility	200 Day Growth	400 Day Growth	Muscle Depth	Fat Depth	Beef Value
<b>EBV</b>	<b>+0.1</b>	<b>-1.2</b>	<b>+0.1</b>	<b>-0.7</b>	<b>+0.4</b>	<b>+0.0</b>	<b>+0.6</b>	<b>+20</b>	<b>+36</b>	<b>+3.0</b>	<b>-0.2</b>	<b>+40</b>
Acc %	70	68	47	85	63	40	47	73	74	66	59	74



# NEYMAR

Claragh Neymar  
 Sire: Ampertaine Jamboree  
 Dam: Claragh Lily

Ear Tag: UK9491073/0404-1  
 HB No: RJT17-4041  
 DOB: 22.08.17



Limousin

- *Neymar is an excellent example of the Limousin breed*
- *Excels in calf conformation*
- *Excellent EBVs for calving*
- *Recommended for commercial and pedigree use*

## CALVING SURVEY INFORMATION

on 41 Cows	Surveys	41
Mortality	0.0%	Avg Gestation Days 290
Size	Average 65.0%	Above Average 20.0%
Conformation	Average 73.7%	Above Average 23.7%
Non Surgical Vet Asst.	2.5%	Surgical Vet Asst. 5.0%

BLUP Date 03.11.20	Birth Weight	Calving Ease	Maternal Calving Ease	Gestation Length	Scrotal Circ.	200 Day Milk	Docility	200 Day Growth	400 Day Growth	Muscle Depth	Fat Depth	Beef Value
EBV	-0.6	+0.3	-1.4	-3.3	-0.5	+2.0	+1.0	+6	+18	+3.2	+0.1	+34
Acc %	67	68	57	80	68	55	73	74	75	71	66	74

# EQUALISER

Lenagh Equaliser

Sire: Dauphin

Dam: Kype Ulay

Ear Tag: UK 9063095/89-2

HB No: SKW09-004

DOB: 14.07.09



- Progeny from Equaliser are of superb quality, 98% of calves average and above
- Sired by the famous French sire Dauphin, noted for maternal traits
- Equaliser is an excellent balance bull, displaying superb muscling with impressive top line and square hindquarters
- Not suitable for maiden heifers

## CALVING SURVEY INFORMATION

on 97 Cows and 107 Heifers	Surveys	204
Mortality	4.4%	Avg Gestation Days 291
Size	Average 73.8%	Above Average 20.8%
Conformation	Average 68.0%	Above Average 29.5%
Non Surgical Vet Asst.	4.5%	Surgical Vet Asst. 4.0%

BLUP Date 03.11.20	Birth Weight	Calving Ease	Maternal Calving Ease	Gestation Length	Scrotal Circ.	200 Day Milk	Docility	200 Day Growth	400 Day Growth	Muscle Depth	Fat Depth	Beef Value
EBV	+2.3	-2.3	+0.1	-0.7	+0.0	-1.0	+2.3	+8	+46	+5.4	+0.4	+54
Acc %	88	88	65	96	63	58	56	88	72	68	60	80

# UMAR

Rahoney Umar  
Sire: Ronick Oklahoma  
Dam: Rahoney Martha

Ear Tag: UK 9634843/678-4  
HB No: MDS03-012  
DOB: 26.05.03



- *Progeny from Umar are excellent in terms of conformation and muscle development*
- *Umar progeny are 97% Average to Above Average on conformation*
- *Suitable for crossing onto Holstein and suckler cows*

## CALVING SURVEY INFORMATION

on 194 Cows and 15 Heifers	Surveys	209
Mortality	2.9%	Avg Gestation Days 294
Size	Average 63.2%	Above Average 31.9%
Conformation	Average 66.8%	Above Average 30.5%
Non Surgical Vet Asst.	3.5%	Surgical Vet Asst. 1.5%

BLUP Date 03.11.20	Birth Weight	Calving Ease	Maternal Calving Ease	Gestation Length	Scrotal Circ.	200 Day Milk	Docility	200 Day Growth	400 Day Growth	Muscle Depth	Fat Depth	Beef Value
EBV	+2.8	+0.4	-0.8	+0.3	+0.3	-3.0	+2.3	+7	+17	+3.2	-0.5	+20
Acc %	94	91	77	96	79	73	61	94	89	86	82	90



# ISAAC

Omorga Isaac 17  
Sire: Curaheen Earp  
Dam: Omorga Destiny

Ear Tag: UK963633007257  
HB No: M093767  
DOB: 12.02.17



- *Isaac is a top performance sire in both weight gains and carcass yield*
- *Top 10% of the breed for Eye Muscle Area*
- *Excellent farmer comments on progeny*
- *Recommended for suckler cows and pedigree use*

## CALVING SURVEY INFORMATION

on 90 Cows and 6 Heifers	Surveys	96
Mortality	2.6%	Avg Gestation Days 291
Size	Average 68.4%	Above Average 25.3%
Conformation	Average 71.4%	Above Average 25.3%
Non Surgical Vet Asst.	1.0%	Surgical Vet Asst. 2.1%

## FEBRUARY 2021 SIMMENTAL BREEDPLAN EBVs

EBV	Calv Ease Direct %	Calv Ease Dtrs %	Gest. Len. Days	Birth Wt Kg	200 Day Wt Kg	400 Day Wt Kg	600 Day Wt Kg	Mature Cow Wt Kg	200 Day Milk Kg	Scrotal Size cm	Carcase Wt Kg	Eye Mus Area cm <sup>2</sup>	Fat Depth mm	Retail Beef Yield %	IMF %	BCGS Terminal Index GBP	BCGS Self Replacing Index GBP
EBV	-3.0	-1.3	-0.2	+4.1	+43	+81	+86	+83	+5	+1.5	+60	+6.3	+0.6	+1.2	+0.4	+102	+117
Breed Average EBVs for 2019 Born Calves																	
EBV	-0.7	-0.1	+0.0	+2.5	+33	+61	+66	+67	+6	+0.6	+44	+3.8	-0.1	+0.8	-0.1	+75	+83

# HANNIBAL

Shacon Hannibal 16 ET  
Sire: Kilbride Farm Delboy 12  
Dam: Omorga Marcia ET

Ear Tag: UK965659800502  
HB No: S003142  
DOB: 04.09.16



- Sired by the renowned Kilbride Farm Delboy
- Impressive style and quality
- Excels in Carcass Weight and yield
- From a top class breeding cow family
- Use with caution until a detailed calving survey is completed

## CALVING SURVEY INFORMATION

on 39 Cows and 1 Heifer	Surveys	40
Mortality	5.0%	Avg Gestation Days 288
Size	Average 65.9%	Above Average 31.7%
Conformation	Average 63.4%	Above Average 36.6%
Non Surgical Vet Asst.	0.0%	Surgical Vet Asst. 0.0%

## FEBRUARY 2021 SIMMENTAL BREEDPLAN EBVs

EBV	Calv Ease Direct %	Calv Ease Dtrs %	Gest. Len. Days	Birth Wt Kg	200 Day Wt Kg	400 Day Wt Kg	600 Day Wt Kg	Mature Cow Wt Kg	200 Day Milk Kg	Scrotal Size cm	Carcass Wt Kg	Eye Mus Area cm <sup>2</sup>	Fat Depth mm	Retail Beef Yield %	IMF %	BCCS Terminal Index GBP	BCCS Self Replacing Index GBP
EBV	-7.3	-7.1	+0.1	+2.9	+33	+65	+77	+75	+4	+0.7	+55	+6.4	-0.8	+2.5	-0.2	+89	+88
Breed Average EBVs for 2019 Born Calves																	
EBV	-0.7	-0.1	+0.0	+2.5	+33	+61	+66	+67	+6	+0.6	+44	+3.8	-0.1	+0.8	-0.1	+75	+83



# INTERNATIONAL

Slievenagh International 17

Sire: Samson

Dam: Linde Laika

Ear Tag: UK912408304243

HB No: MO94872

DOB: 07.07.17



- *Homozygous Polled*
- *Tremendous Growth at 200 and 400 days*
- *Suitable for breeding replacements – Top 10% of the breed*
- *Outcross pedigree for pure breeding*

## PEDIGREE

Sire **Samson**

PGS Nelson

PGD Biene

Dam **Linde Laika**

MGS Linde General

MGD Linde Gry

## FEBRUARY 2021 SIMMENTAL BREEDPLAN EBVs

	Calv Ease Direct %	Calv Ease Dtrs %	Gest. Len. Days	Birth Wt Kg	200 Day Wt Kg	400 Day Wt Kg	600 Day Wt Kg	Mature Cow Wt Kg	Scrotal Size cm	BCCS Terminal Index GBP	BCCS Self Replacing Index GBP
EBV	-9.9	+0.5	-1.6	+5.1	+59	+90	+96	+88	+0.9	+92	+104
Breed Average EBVs for 2019 Born Calves											
EBV	-0.7	-0.1	+0.0	+2.5	+33	+61	+66	+67	+0.6	+75	+83



# HUSSAR

Hussar of Upsall (P)  
Sire: Broughton Park Thunder  
Dam: Augusta X822 of Upsall

Ear Tag: UK121060-300986  
HB No: 613802756  
DOB: 09.04.14



- Purchased by Antrim Estates, Glenarm for 9500 gns
- Sired by Australian sire Broughton Park Thunder
- Hussar displays breed character with style and performance
- High degree of farmer satisfaction

## CALVING SURVEY INFORMATION

on 49 Cows and 34 Heifers	Surveys	83
Mortality	1.8%	Avg Gestation Days 289
Size	Average 76.5%	Above Average 18.5%
Conformation	Average 75.3%	Above Average 23.4%
Non Surgical Vet Asst.	4.8%	Surgical Vet Asst. 1.8%

## FEBRUARY 2021 BEEF SHORTHORN BREEDPLAN EBVs

EBV	Calv Ease Direct %	Calv Ease Dtrs %	Gest. Len. Days	Birth Wt Kg	200 Day Wt Kg	400 Day Wt Kg	600 Day Wt Kg	200 Day Milk Kg	Scrotal Size cm	Carcass Wt Kg	Eye Mus Area cm <sup>2</sup>	Fat Depth mm	Retail Beef Yield %	IMF %	BCCS Terminal Index GBP	BCCS Self Replacing Index GBP	Maternal GBP
EBV	+3.4	+6.2	+1.0	+2.5	+32	+46	+51	+5	+0.4	+45	+4.0	+0.8	+0.9	+0.2	+42	+57	+34
Breed Average EBVs for 2019 Born Calves																	
EBV	-0.7	-0.4	-0.2	+1.7	+19	+31	+40	+6	+0.2	+28	+1.8	-0.1	+0.6	-0.1	+28	+28	+23

# HORACE

Horace  
Sire: Don Juan  
MGS: Marengo

Ear Tag: 1532157716  
HB No: 2012017/1532157716  
DOB: 21.01.12



- *Horace is a pure French import*
- *Horace sired the Reserve Saler Champion at RUAS 2016*
- *Very good calves with excellent growth rates*

## CALVING SURVEY INFORMATION

on 15 Cows and 4 Heifers	Surveys	19
Mortality	0.0%	Avg Gestation Days 291
Size	Average 52.6%	Above Average 26.3%
Conformation	Average 84.2%	Above Average 15.8%
Non Surgical Vet Asst.	0.0%	Surgical Vet Asst. 0.0%

## FEBRUARY 2021 SALERS BREEDPLAN EBVs

	Gest. Len. Days	Birth Wt Kg	200 Day Wt Kg	400 Day Wt Kg	600 Day Wt Kg	Mature Cow Wt Kg
EBV	+0.1	+0.8	+9	+13	+18	+18
Breed Average EBVs for 2019 Born Calves						
EBV	+0.0	+1.0	+11	+16	+19	+20

# OSCAR

Drumlegagh Oscar HB No: UK965184322967

Sire: Drumlegagh Lancelot

MGS: Drumlegagh Halley

DOB: 10.09.19



- *Oscar is an outstanding Salers sire displaying breed character with good muscling and hindquarter development*
- *Oscar's sire is a very consistent breeder of quality stock*
- *Use on cows only until a detailed calving survey is completed*

## PEDIGREE

Sire **Drumlegagh Lancelot**  
 PGS Fanfan  
 PGD Drumlegagh Eve  
  
 Dam **Drumlegagh Halley**  
 MGS Cesar  
 MGD Drumlegagh Babe

## FEBRUARY 2021 SALERS BREEDPLAN EBVs

	Gest. Len. Days	Birth Wt Kg	200 Day Wt Kg	400 Day Wt Kg	600 Day Wt Kg	Mature Cow Wt Kg
<b>EBV</b>	<b>+0.2</b>	<b>+0.7</b>	<b>+8</b>	<b>+12</b>	<b>+12</b>	<b>+13</b>
<b>Breed Average EBVs for 2019 Born Calves</b>						
<b>EBV</b>	<b>+0.0</b>	<b>+1.0</b>	<b>+11</b>	<b>+16</b>	<b>+19</b>	<b>+20</b>



# BELL BOY

Ballylough Bell Boy  
Sire: Castlemartin Admiral  
Dam: Ballylough Heather Bell

Ear Tag: UK151769/27712  
HB No: 04739  
DOB: 25.04.11



- *Excellent example of the Belted Galloway breed*
- *Calves are easily born*
- *Calf quality is excellent*

## PEDIGREE

Sire **Castlemartin Admiral**  
PGS Graedstrup Springfield  
PGD Schougaard Pixie  
Dam **Ballylough Heather Bell**  
MGS Forthill Buster  
MGD Barnearnie Heather

## JANUARY 2021 ICBF EUROSTAR RATINGS

	Replacement Index	Terminal Index	Dairy Beef
Star Rating Within BG Breed	★★★★	★	★
eurovalue	€89	-€27	-€15
Index Reliability %	38	44	42
Star Rating Across all Beef Breeds	★★★	★	★

# FLINT

Kilbarry Freddy Flint  
Sire: Farranbrien Arran  
PGS: Knockleigh Cheyanne

Ear Tag: 372212169730446  
DOB: 09.04.18



- *Excellent example of the breed*
- *Suitable for breeding replacements*

## PEDIGREE

Sire **Farranbrien Arran**  
PGS Knockkane Upton ET  
PGD Whitewell Unity ET  
Dam **Knockleigh Cheyanne**  
MGS Farranbrien Zodiac  
MGD Knockleigh Abby

## JANUARY 2021 ICBF EUROSTAR RATINGS

	Replacement Index	Terminal Index	Dairy Beef
Star Rating Within SP Breed	★★★★	★★	★★
eurovalue	€79	€8	€11
Index Reliability %	41	44	39
Star Rating Across all Beef Breeds	★★★	★	★

# GENET

Genet  
Sire: Espion  
Gsire: Argente

Aubrac  
HB No: FR1531318559  
DOB: 22.03.11



- *Calving Ease sire with low birth weights*
- *Suitable for crossing on dairy cows*
- *Above average muscling*

## FRENCH PERFORMANCE DATA

Calving Ease Index	Growth Potential	Muscular Development	Skeletal Development	Weaning Proofs
105	99	106	102	108

# JOUJOU

Joujou  
Sire: Gagnant  
PGS: Vautour

Ear Tag: FR8559753355  
DOB: 21.03.14



- *Excellent muscling and growth*
- *High killout rates*
- *Recommended for cows only*

## FRENCH PERFORMANCE DATA

Calving Ease Index	Maternal Merit	Total Merit Beef on Farm	Live Beef Abilities	Type Growth
90	103	97	119	117

# Fertility Boost

AI Services offers a selection of mixed beef semen. Mixed semen of this nature has been shown to significantly improve conception rates.

## Available Fertility Boost Mixtures

	Sire 1	Sire 2	Sire 3
<b>Triple Mix British Blue</b>	<i>Boroside Incredible</i>	<i>Boroside Luxury</i>	<i>Springhill King Kong</i>
<b>Triple Mix Aberdeen Angus</b>	<i>Rawburn Jumbo Eric</i>	<i>Thrunton Rocket</i>	<i>Woodvale Network</i>
<b>AA x AA x HER</b>	<i>Rawburn Jumbo Eric</i>	<i>Woodvale Network</i>	<i>Lisrace Lackey Boy</i>
<b>AA x BB x HER</b>	<i>HW Grenade</i>	<i>Boroside Incredible</i>	<i>Lisrace Lackey Boy</i>
<b>AA x BB x HER</b>	<i>Rawburn Jumbo Eric</i>	<i>Boroside Incredible</i>	<i>Lisrace Lackey Boy</i>
<b>AA x BB x HER</b>	<i>Rawburn Jumbo Eric</i>	<i>Boroside Luxury</i>	<i>Lisrace Lackey Boy</i>
<b>AA x BB x LIM</b>	<i>Rawburn Jumbo Eric</i>	<i>Boroside Luxury</i>	<i>Claragh Neymar</i>
<b>AA x HER x LIM</b>	<i>Woodvale Network</i>	<i>Trillick Hotspur</i>	<i>Ampertaine Ifor</i>
<b>AA x HER x LIM</b>	<i>Woodvale Network</i>	<i>Trillick Hotspur</i>	<i>Carmorn Marty</i>



Individual sires may change in the mixtures from time to time. Additional Mixes are available by request.



# Considering Synchronisation?

## BENEFITS

- Minimum Heat Detection needed
- Allows you to batch calve
- More even batch of animals to manage at housing and grazing
- Reduces the need for additional bulls
- Cost effective
- Select sires for individual cows or heifers

## IMPORTANT POINTS TO CONSIDER

- Results can be variable
- Good handling facilities are essential
- Plan ahead and discuss with your Veterinarian and AI Services Technician
- Adequate calving pens are needed
- Herd health and nutrition
- Other variables could have negative impacts (e.g. weather)
- Days between calving and A. I. +42 days
- Body Condition Score
- Previous calving difficulty
- Poor temperament of animals

Contact your local AI Technician or Breeding Specialist for more details. See the back cover for contact phone numbers for advice.



# Benefits of A. I. in the Suckler Herd

1. It allows you to utilize superior genetics
2. It allows you to select sires for individual cows
  - Most of the herds are made up of many different types of cows
3. You can select sires using EBVs
  - Sires with high 200 day growth are suitable for farmers selling weanlings
  - Sires with high 400 day growth and muscling are suitable for beef finishers
  - Sires with high 200 day milk value are suitable for breeding replacements
4. Calving and progeny details available
  - All the bulls are scrutinized for calving difficulty and calf quality
5. A. I. allows you to alter genetics quickly
  - Change from one breed to another - Charolais, Limousin, Angus or Salers without incurring additional costs.
6. A. I. has low capital investment
  - A good (?) stock bull could cost anything between £2,000 – £10,000
  - After 30 months – Cull Price
  - Feeding, housing, fencing and high risk factor for you, children and the public
7. A. I. ensures semen quality
  - 5% of all bulls are infertile at some time
  - 30% have unsatisfactory semen quality
8. A. I. allows you to synchronize
  - Shorter heat detection period
  - Shorter calving period
  - Even and heavier batch of calves to erase house market
  - Fewer barren cows
  - Better record keeping

## Getting the Best from A. I.

- Heat detection rates in the United Kingdom average about 55%. Improvements are gained by taking more time, i.e. 20 - 30 minutes on each occasion, and by more early morning and late night inspections.
- Although average heats last 12 - 15 hours, 25 - 30% of cows have heats of less than 6 hours.
- Prevent cows getting either too fat or too thin. Cows in condition score 2 - 3 (scale 1 - 5) are optimal. Thriving animals always do better.
- Avoid excessive weight loss around the time of service.
- Treat lame animals promptly.
- Breeding cows within 50 days of calving tends to give poor results.
- Never breed any cow with a dirty vaginal discharge or evidence of 'whites'.
- Keep complete records of all cows that come into heat and use them to anticipate returns. Where cows are not coming into heat have your vet examine and treat them.
- A cow standing firm to be mounted is the best sign of heat, but remember 6 - 8% of pregnant animals will occasionally stand too!

# BLUP Figures

## *the numbers explained*

Obtaining a bull with the right genetics can have a major impact on herd profitability. Estimated Breeding Values (EBVs) are measurements of genetic potential, which can be used to assess a bull's breeding merit for a specific trait.

EBVs are expressed in the same units as the traits they represent and are expressed relative to a common baseline. Comparisons can be made using EBVs between bulls of the same breed, but not different breeds.

A bull's EBVs must be halved to estimate how much of his genetic superiority will be passed on to his progeny.

So a bull with a 400 Day Weight EBV of +40kg will produce calves 20 kg heavier at 400 days of age than a bull with an EBV of 0.

Accuracy Values are produced for each EBV. Accuracy is expressed as a percentage and indicates the amount of data used to calculate the EBV. The higher the Accuracy Value, the lower the chances of the EBV changing over time as new data becomes available.

EBV	Interpretation	Notes
Birth Weight	Negative values = Lighter calves at birth	Enables sire to be selected to produce smaller calves at birth, reducing calving difficulties
Calving Ease	Positive values = More unassisted calvings	Identifies sires whose calves will tend to be born without assistance
Maternal Calving Ease	Positive values = More unassisted calvings	Identifies females that will calve more easily. Should not be confused with Calving Ease Direct (see above)
Gestation Length	Negative values = Shorter gestations	Shorter gestation lengths tend to result in easier calvings, because birth weights tend to be lower
Calving Value	Higher values = More profitable	The economic value of an animal in terms of gestation length and difficult calvings
Scrotal Circumference	Higher values = Larger Circumference	Scrotal Circumference measurements (at one year old)
200 Day Milk	Positive values = More productive female replacements	Indicates female breeding lines that produce more milk and so wean heavier calves
Docility	Lower values = More Docile	Docility score (at around one year old)
200 Day Growth 400 Day Growth	Positive values = Faster growth rates	Selection for faster growth will result in animals that have heavier carcasses at a constant fat class or leaner carcasses at a constant age
Muscle Depth	Positive values = Deeper loin muscle	Selecting for this trait will increase the yield of lean meat in the carcass
Fat Depth	Negative values = Leaner carcasses	Indicates animals capable of producing lean carcasses, which can be taken to heavier weights without becoming overfat
Beef Value	Higher values = More profitable	The economic value of an animal in terms of the financial merit of its offspring's carcasses



# BREEDPLAN

## *the numbers explained*

BREEDPLAN is a modern genetic evaluation system for beef cattle. It offers the potential to accelerate genetic improvement in your herd, tighten up breeding operations, improve productivity and increase prices of cattle sold for both breeding and slaughter. At the time of printing this catalogue, the Aberdeen Angus, Simmental, Shorthorn, British Blue and Hereford breeds are using this system.

### **CALVING EASE**

Calving Ease EBVs are based on calving difficulty scores, birth weights and gestation length information. More positive EBVs are favourable and indicate easier calving. DIRECT calving ease indicates how this animal influences the birth of his progeny.

DAUGHTERS' calving ease indicates how well the animal produces daughters that have easier calving.

### **BIRTH**

GL: Gestation length EBV (days) is based on AI records. Lower (negative) GL EBVs indicate shorter gestation lengths which generally relate to easier calving and increased growth after birth.

BWT: Birth Weight EBV (kg) is based on the measured birth weight of animals, adjusted for damage. The lower the value the lighter the calf at birth and the less is the likelihood of a difficult birth. This is particularly important when selecting sires for use on heifers.

### **GROWTH**

MILK: 200 Day Milk EBV (kg) is an estimate of an animal's milking ability. For sires, this EBV is indicative of their daughters' milking ability as it affects the 200 Day Weight of their calves.

200: 200 Day Growth EBV (kg) is calculated from the weight of animals taken between 80 and 300 days of age. Values are adjusted to 200 days and for dam age. This EBV is the best single estimate of an animal's genetic merit for growth to early ages.

400: 400 Day Weight EBV (kg) is calculated from the weight of progeny taken between 301 and 500 days of age, adjusted to 400 days and for dam age. This EBV is the best single estimate of an animal's genetic merit for yearling weight.

600: 600 Day Weight EBV (kg) is calculated from the weight of progeny taken between 501 and 900 days of age, adjusted to 600 days and for dam age. This EBV is the best single estimate of an animal's genetic merit for growth beyond yearling age.

### **CARCASS**

CWT: Carcass Weight EBV (kg) is an estimate of the genetic difference in Carcass weight at a standard age of 650 days.

EMA: Eye Muscle Area EBV (cm<sup>2</sup>) estimates genetic differences in eye muscle area of a 300 kg dressed Carcass. More positive EBVs indicate better muscling on animals.

RIB: Rib Fat EBV (mm) estimates the genetic differences in fat depth at the rib in a 300 kg dressed Carcass. More positive EBVs indicate more subcutaneous fat and earlier maturity.

RBV%: Retail Beef Yield Percent EBV (%) represents total (boned out) meat yield as a percentage of a 300 kg dressed Carcass. A more positive EBV indicates higher percentage yield for the 300 kg Carcass size.

### **TERMINAL SIRE INDEX**

This index ranks bulls by their genetic potential for the production of prime steers and heifers for beef production. Growth and Carcass EBVs are the main drivers used in compiling this index, with considerable emphasis on calving ease direct. Typical production parameters, prices and costs underlie this selection index. Bulls with a higher Terminal Index will have a greater genetic potential to sire heavier finished progeny.

As there are no maternal traits included in the calculation of the Terminal Index, bulls with a high Index will not necessarily be suitable for breeding heifer replacements.

### **SELF REPLACING INDEX**

This index is also focused on Calving Ease, Retail Beef Yield and Growth (as animals are still being sold for slaughter), but includes maternal and fertility EBVs as well. The index is trying to balance the requirements for the cow herd with producing animals to market specifications. The Self Replacing Index is aimed at a herd selecting replacement females from within the herd while breeding steers and excess heifers to turn off to meet market specifications. There is emphasis on calving ease and maternal traits while also looking to finish animals for slaughter.

Breed	Sire Name	Use on		Recommended for		
		Dairy Cow	Suckler Cow	Ease of Calving	Fast Growth	Improved Muscling
Aberdeen Angus	Hallington Endeavour	✓	✓		★★	★★
Aberdeen Angus	Woodvale Kool Jaguar	✓	✓	✓	★★★	★★★
Aberdeen Angus	Thrunton Rocket (Limited Supply)	✓	✓		★★★	★★★
Aberdeen Angus	Woodvale Network	✓	✓	✓	★★	★★
Aberdeen Angus	Rawburn Jumbo Eric		✓		★★★	★★★
Aberdeen Angus	Laheens Prince of Eslin	✓	✓	✓	★★★	★★★
Aberdeen Angus	HW Grenade	✓	✓		★★	★★
Aberdeen Angus	Drumhill Lord Highway	✓	✓		★★	★★
British Blue	Lukeroyal Ghost	✓	✓		★★	★★
British Blue	Bavan Giant		✓		★★	★★★
Irish Blue	Boroside Incredible	✓	✓		★★	★★
Irish Blue	Boroside Luxury	✓	✓		★★	★★★
British Blue	Knockagh Jubilant	✓		✓	★★	★★
Irish Blue	Bluestar Ice	✓	✓		★★	★★★
British Blue	Springhill King Kong	✓	✓		★★	★★★
British Blue	Chatham Ned	✓	✓		★★	★★
British Blonde	Glenvale Harry		✓		★★	★★
French Blonde	Glacon		✓		★★	★★★
Charolais	Anneskeagh Ulysses		✓		★★	★★★
Charolais	Greenall Laughoutloud	✓	✓	✓	★★	★★
Charolais	Solitude Narcos		✓	✓	★★★	★★
Charolais	Woodpark Paris		✓		★★	★★
Charolais Culard	Grisy	✓	✓		★★	★★
Charolais Culard	Larzac	✓	✓	✓	★★	★★
Hereford	Solpoll 1 Pounder	✓	✓		★★★	★★★
Hereford	Lisrace Lackey Boy	✓	✓		★★	★★
Hereford	Brookfield 1 Romeo	✓	✓		★★	★★
Hereford	Graceland 1 Silas	✓	✓		★★	★★
Limousin	Lenagh Equaliser	✓	✓	✓	★★★	★★★
Limousin	Ampertaine Ifor		✓	✓	★★★	★★★
Limousin	Rahoney Umar		✓		★★★	★★★
Limousin	Carmorn Marty	✓	✓	✓	★★	★★★
Limousin	Claragh Neymar		✓		★★★	★★
Simmental	Omorga Isaac	✓	✓		★★★	★★★
Simmental	Shacon Hannibal		✓		★★	★★
Simmental	Slievenagh International	✓	✓		★★	★★
Beef Shorthorn	Hussar	✓	✓	✓	★★	★★
Beef Shorthorn	Annanwater Scotsman	✓	✓		★★	★★
Salers	Horace	✓	✓	✓	★★	★★
Salers	Drumlegagh Oscar	✓	✓		★★	★★
Belted Galloway	Ballylough Bell Boy	✓	✓	✓	★★	★★
Speckle Park	Flint	✓	✓	✓	★	★
Aubrac	Genet	✓		✓	★★	★★
Parthenaise	Joujou		✓		★★	★★★

Recommended for			Additional Comments	Royalty •
Suckler Cow Replacements	Weaning	Beef Finishing		
✓	✓	✓	Good replacement for Eisenhower	•
✓	✓	✓	Calving Ease Sire	•
✓	✓	✓	Excellent Crossing Sire	•
✓	✓	✓	Calving Ease Sire	•
✓	✓	✓	Excellent All Rounder	•
✓	✓	✓	First calves are easily born	•
✓	✓	✓	New	•
✓	✓	✓	New	•
	✓	✓	Progeny display exceptional quality	
	✓	✓	All Round Sire	
	✓	✓	Impressive progeny	
			Good progeny, great colour marking	
		✓	Calving Ease	
	✓	✓	Calving Ease	
	✓	✓	Calving Ease	
	✓	✓	New	
	✓	✓	Quality Calves	
			Suitable for producing weanlings	
	✓	✓	Very popular for producing weanlings	•
	✓	✓	Recommended for beef type cows	
	✓	✓	All Rounder	•
	✓	✓	New	•
	✓	✓	New	
	✓	✓	New	
✓	✓	✓	Superb Quality	
	✓	✓	Impressive first calves	•
			New, Pedigree breeding	•
	✓	✓	New	•
✓	✓	✓	Elite Carcase, Good All Rounder	•
	✓	✓	Widespread use	•
	✓	✓	Elite Carcase, Excellent Muscling	•
	✓	✓	Calving Ease	•
	✓	✓	Pedigree breeding	•
✓	✓	✓	Impressive progeny	•
	✓	✓	Fast growth rates	•
✓		✓	Polled genetics	•
			Very popular	
✓	✓	✓	Calving Ease Sire	
✓	✓		Suckler replacement	
✓	✓		New	
✓	✓		Very popular	
✓	✓	✓	Calving Ease	
	✓	✓	New, early finishing	
	✓	✓	New, exceptional muscling, use on cows only	

• Royalty applicable for Pedigree Registration. See website. Contact your Breeding Society or AI Services for further details.



# *At Your Service . . .*

**Headquarters and Stud Facility**      **Ballycraigy**      **028 9083 3123**

**Breeding Information**      **Ivan Minford**      **078 3118 9852**  
**028 9083 3123**  
**iminford@ai-services.co.uk**

**Michelle Hill**      **028 9083 3123**  
**mhill@ai-services.co.uk**

## **BREEDING SPECIALISTS**

**ANTRIM / LONDONDERRY**      **Ben Mallon**      **078 8444 3899**  
**Ivan Minford**      **078 3118 9852**  
**Gary Henderson**      **079 8934 6226**

**DOWN / ARMAGH**      **David Dunlop**      **079 7660 5701**  
**Nigel Spence**      **078 0927 4141**

**FERMANAGH / TYRONE**      **John Sproule**      **077 7816 9263**  
**David Vance**      **077 9584 1306**  
**Philip Robinson**      **077 4164 2616**  
**William Maxwell**      **079 7160 3731**

**EMBRYO TRANSFER**      **David McCall**      **077 7880 5357**

**STUD MANAGER**      **Robin Boyd**      **077 9934 6784**

**DIY TRAINING**      **Ballycraigy**      **028 9083 3123**



# **Ai SERVICES**

**(NORTHERN IRELAND) LTD**

**Ballycraigy 671 Antrim Road Newtownabbey**  
**Co Antrim BT36 4RL Tel: 028 9083 3123**

**Web: [www.ai-services.co.uk](http://www.ai-services.co.uk) Email: [info@ai-services.co.uk](mailto:info@ai-services.co.uk)**

***To Book a Service Call or Pregnancy Scan***  
***Telephone 028 9083 3123***