

Sexed Semen Catalogue 2019



*Specially selected Holsteins and Coloured
Breeds available as Sexed Semen for
Northern Irish Farms*

AI SERVICES
- NORTHERN IRELAND -

Welcome to our latest dairy genetics Sexed Semen Catalogue 2019.

As the demand for sexed semen grows, AI Services has scoured the marketplace to source sexed sires of the highest calibre to complement Northern Irish herds.

AI Services' Breeding Partners are all using the very latest Sexing Technology, Sexed Ultra. Sexed semen can achieve conception rates of up to 90% of conventional semen.

AI Services always puts health and longevity as top priorities for selection of bulls for our customers. As Northern Ireland is a manufacturing region, components are also a must for any breeding decisions made by local producers.

The catalogue includes both Holstein and Coloured Breeds, as the demand for crossbreeding continues to grow.

Sexed Semen Handling Checklist

- Maintain an accurate semen inventory to lessen the risk of semen exposure.
- Raise the canister just high enough to grasp the top of the cane with a tweezers – 5 inches from top of tank.
- To maintain semen quality, do not allow the canister or cane to remain in the raised portion in the neck tube for more than 10 seconds.
- Place the straw immediately in a warm water bath, at a temperature of 95° F for a minimum of 45 seconds.
- Semen should be placed into the cow as quickly as possible (within 15 minutes after it is removed from the tank).
- The straw should be handled by the tweezers, not the fingers.
- To protect the thawed semen, place the insemination straw into a folded paper towel.
- Dry the straw and check for proper sire identification before loading the gun. Note: Load only one gun at a time.
- Prepare removal of sheath through the resealable end of the sheath package.
- Warm the gun prior to placing the insemination straw inside.
- After the insemination straw is loaded into the insemination gun, make a clean, straight cut at a right angle to – and just below – the crimp.
- Wipe the cutting edge of the scissors with a paper towel, to prevent future straw contamination.
- Place the sheath over the insemination gun, seat the straw in the sheath tip and secure it into place. Prime the insemination gun by pushing the plunger until semen is moved to the end of the sheath.
- Place the loaded insemination gun in a clean plastic glove and then inside your clothing to transport to the cow.

Whilst every effort has been made to ensure the accuracy of all information contained in this catalogue, AI Services (NI) Ltd. accepts no responsibility whatsoever for any error, and without prejudice do not accept any liability for loss which may result from any error. AI Services abides by the DairyCo and Holstein UK established Code of Advertising.

Contents

HOLSTEIN

Brick P	3
Brook	4
Leap	5
Monson	6
Montoya	7
Netscape	8
Nihao	9
Nitro	10
Praser	11
Recoil	12
Topshot	13
Zarek	14
Abel	15
Ambassador	15
Bouncer	15
Cabriolet	15

MONTBELLARDE

Harpon	16
--------	----

DANISH RED

VR Vimo	17
---------	----

JERSEY

VJ James	18
----------	----

FLECKVIEH

Rommel	19
--------	----

BRICK P



Sterk AltaBrick P Red

A1A2 AI Code: HO5255

HB No: 63000662990464

Source: Holland

AltaCasual X Aikman X Planet

DOB: 05.12.15



Holstein Genomic Production Proof

DairyCo Breeding+

PTA April 2019

PLI	£598
Milk Kg	+672
Fat Kg	+40.2
Fat %	+0.16
Protein Kg	+26.3
Protein %	+0.05
Reliability	68%

Young Genomic Pedigree Index

- **Tremendous bull for increasing components, especially Fat Kgs and Percentage**
- **Strong bodied cows with great Rump Width**
- **Great red bull for improving milk production**
- **Added bonus of polled genetics**

YOUNG GENOMIC PEDIGREE INDEX

HUKI 04/19

Type Merit	+1.20	Excellent
Mammary	+0.94	Excellent
Legs & Feet	+0.15	Excellent
Stature	+0.54	160 cm
Chest Width	+1.38	Wide
Body Depth	+0.75	Deep
Angularity	+0.27	Open Rib
Rump Angle	+0.21	Low Pins
Rump Width	+0.54	Wide
Rear Leg Side	+0.61	Sickled
Foot Angle	+0.06	Steep
Fore Udder Att	+1.13	Tight
Rear Udder Ht	+0.68	Very High
Udder Support	-0.35	Strong
Udder Depth	+0.88	20cm Above
Front Teat Pl.	+0.49	Close
Teat Length	-0.21	Long
Rear Teat Pl.	+0.10	Close
Teat Pos. Side	-0.39	Apart
Temperament	+1.06	Good
Ease of Milk	+0.36	Fast
Locomotion	+0.23	Excellent

MANAGEMENT TRAITS

AHDB 04/19

Fertility Index	+5.8	Improver
Lifespan	+0.4	Improver
Somatic Cell Count	-8	Improver
Mastitis	0	Improver
TB Advantage	+1.8	Desirable
Lameness Advantage	+0.5	Improver
Maintenance	+14	Desirable
Calf Survival	+1	Improver
Direct Calving Ease	-0.7	Easy

Below Average Average Above Average

-2

+2

Holstein Sires

Sexed



MGD: Ginary Supersire Nicole VG86

Holstein Genomic Production Proof	
DairyCo Breeding+	PTA April 2019
PLI	£833
Milk Kg	+758
Fat Kg	+30.9
Fat %	+0.01
Protein Kg	+31.4
Protein %	+0.08
Reliability	67%

Young Genomic Pedigree Index

- Outstanding combination of type, production and health traits
- Recommended for increasing longevity in the herd
- Ideally suited for robotic milking schemes
- Ranked in the top 10 Holstein bulls on PLI

MANAGEMENT TRAITS		AHDB 04/19	
Fertility Index	+8.6		Improver
Lifespan	+0.8		Improver
Somatic Cell Count	-31		Improver
Mastitis	-4		Improver
TB Advantage	+0.8		Desirable
Lameness Advantage	1.8		Improver
Maintenance	+7		Desirable
Calf Survival	+2.8		Improver
Direct Calving Ease	-0.8		Easy

Below Average Average Above Average

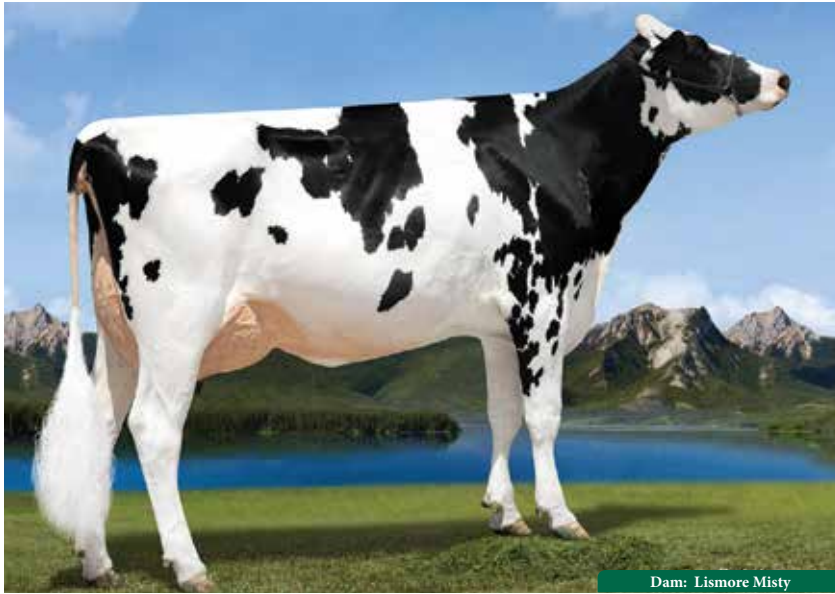
YOUNG GENOMIC PEDIGREE INDEX		HUKI 04/19	
Type Merit	+2.13		Excellent
Mammary	+1.87		Excellent
Legs & Feet	+1.25		Excellent
Stature	+0.54		160 cm
Chest Width	+0.45		Wide
Body Depth	-0.62		Deep
Angularity	+0.12		Open Rib
Rump Angle	-0.01		Low Pins
Rump Width	+0.75		Wide
Rear Leg Side	-0.37		Sickled
Foot Angle	+0.67		Steep
Fore Udder Att	+1.58		Tight
Rear Udder Ht	+2.26		Very High
Udder Support	+0.72		Strong
Udder Depth	+1.98		20cm Above
Front Teat Pl.	-0.32		Close
Teat Length	+0.64		Long
Rear Teat Pl.	+0.00		Close
Teat Pos. Side	+0.17		Apart
Temperament	+0.91		Good
Ease of Milk	+0.12		Fast
Locomotion	+1.29		Excellent

-2 +2

MONTOYA



Peak AltaMontoya ET A1A2 AI Code: HO5225
 HB No: 65003134407079 Source: USA
 AltaMoreno X Supersire X Mogul DOB: 06.08.16



Dam: Lismore Misty

Holstein Genomic Production Proof

DairyCo Breeding+	PTA April 2019
PLI	£611
Milk Kg	+1016
Fat Kg	+39.9
Fat %	+0.00
Protein Kg	+33.6
Protein %	+0.01
Reliability	67%

Young Genomic Pedigree Index

- **Montoya will suit farmers looking for big strong dairy cows with massive production**
- **Over +1000 kgs of Milk and +73 kgs Fat + Protein**
- **Impressive udders for a massive production bull**
- **Recommended for use on cows only**

MANAGEMENT TRAITS		AHDB 04/19	
Fertility Index	+2.8		Improver
Lifespan	+0.3		Improver
Somatic Cell Count	-12		Improver
Mastitis	-1		Improver
TB Advantage	+0.6		Desirable
Lameness Advantage	+1.2		Improver
Maintenance	+24		Desirable
Calf Survival	+1.4		Improver
Direct Calving Ease	-1.0		Easy

Below Average Average Above Average

YOUNG GENOMIC PEDIGREE INDEX

HUKI 04/19

Type Merit	+2.61		Excellent
Mammary	+1.62		Excellent
Legs & Feet	+1.11		Excellent
Stature	+2.22		160 cm
Chest Width	+1.02		Wide
Body Depth	+0.97		Deep
Angularity	+1.66		Open Rib
Rump Angle	+0.93		Low Pins
Rump Width	+1.44		Wide
Rear Leg Side	-0.12		Sickled
Foot Angle	+0.69		Steep
Fore Udder Att	+1.50		Tight
Rear Udder Ht	+1.91		Very High
Udder Support	+1.29		Strong
Udder Depth	+1.14		20cm Above
Front Teat Pl.	+1.26		Close
Teat Length	+0.08		Long
Rear Teat Pl.	+1.57		Close
Teat Pos. Side	+0.53		Apart
Temperament	+1.41		Good
Ease of Milk	+0.24		Fast
Locomotion	+1.07		Excellent

-2

+2

Holstein Sires

Sexed

NETSCAPE



Bianfrie Netscape A1A1 AI Code: HO5626
 HB No: 71005027780438 Source: France
 Solaris X Mardigras X Beacon End DOB: 08.02.17

Sexed Holstein Sires



Holstein Genomic Production Proof	
DairyCo Breeding+	PTA April 2019
PLI	£661
Milk Kg	+787
Fat Kg	+28.7
Fat %	-0.03
Protein Kg	+28.6
Protein %	+0.04
Reliability	68%

Young Genomic Pedigree Index

- *Netscape will increase milk production and breed daughters with high fertility*
- *Recommended for all round type improvement, with snugly attached udders*
- *Daughters will display wide rumps with good legs and feet*

YOUNG GENOMIC PEDIGREE INDEX		HUKI 04/19
Type Merit	+1.95	Excellent
Mammary	+1.20	Excellent
Legs & Feet	+1.31	Excellent
Stature	+0.69	160 cm
Chest Width	+0.23	Wide
Body Depth	+0.22	Deep
Angularity	+1.05	Open Rib
Rump Angle	-0.45	Low Pins
Rump Width	+1.17	Wide
Rear Leg Side	+0.24	Sickled
Foot Angle	+0.40	Steep
Fore Udder Att	+0.98	Tight
Rear Udder Ht	+1.72	Very High
Udder Support	+0.80	Strong
Udder Depth	+0.89	20cm Abve
Front Teat Pl.	+0.27	Close
Teat Length	+0.23	Long
Rear Teat Pl.	+0.45	Close
Teat Pos. Side	-0.58	Apart
Temperament	+0.39	Good
Ease of Milk	+0.86	Fast
Locomotion	+1.38	Excellent

MANAGEMENT TRAITS		AHDB 04/19
Fertility Index	+10.9	Improver
Lifespan	+0.4	Improver
Somatic Cell Count	-18	Improver
Mastitis	-1	Improver
TB Advantage	+0.2	Desirable
Lameness Advantage	+1.0	Improver
Maintenance	+6	Desirable
Calf Survival	+0.8	Improver
Direct Calving Ease	+0.1	Easy

Below Average Average Above Average

-2 +2



4 Dam: Lylehaven Lila Z EX94

Holstein Genomic Production Proof	
DairyCo Breeding+	PTA April 2019
PLI	£652
Milk Kg	+791
Fat Kg	+36.9
Fat %	+0.07
Protein Kg	+27.0
Protein %	+0.02
Reliability	67%

Young Genomic Pedigree Index

- *Nihao is the complete all round sire, improving production, components and type*
- *Daughters will display very wide chests and body depth*
- *Idially suited for herds needing a bull with a no-holes linear*
- *Excellent legs and feet and superb locomotion*

MANAGEMENT TRAITS		AHDB 04/19
Fertility Index	+6.3	Improver
Lifespan	+0.5	Improver
Somatic Cell Count	-18	Improver
Mastitis	-1	Improver
TB Advantage	+1	Desirable
Lameness Advantage	+2.1	Improver
Maintenance	+18	Desirable
Calf Survival	+1.4	Improver
Direct Calving Ease	-0.7	Easy

Below Average Average Above Average

YOUNG GENOMIC PEDIGREE INDEX		HUKI 04/19
Type Merit	+2.07	Excellent
Mammary	+1.46	Excellent
Legs & Feet	+0.90	Excellent
Stature	+0.61	160 cm
Chest Width	+1.82	Wide
Body Depth	+1.11	Deep
Angularity	+0.45	Open Rib
Rump Angle	-0.41	Low Pins
Rump Width	+0.86	Wide
Rear Leg Side	-0.39	Sickled
Foot Angle	+0.37	Steep
Fore Udder Att	+1.22	Tight
Rear Udder Ht	+1.71	Very High
Udder Support	+1.21	Strong
Udder Depth	+0.33	20cm Above
Front Teat Pl.	+0.63	Close
Teat Length	+1.65	Long
Rear Teat Pl.	+0.65	Close
Teat Pos. Side	+0.52	Apart
Temperament	+0.50	Good
Ease of Milk	+0.53	Fast
Locomotion	+1.01	Excellent

-2 +2

PRASER



Westcoast Penman Praser A1A2 AI Code: HO5200
 HB No: 64000012283345 Source: Canada
 Penmanship X Bay MVP X Epic DOB: 27.12.15



Dam: Gold-N-Oaks MVP Aria

Holstein Genomic Production Proof	
DairyCo Breeding+	PTA April 2019
PLI	£632
Milk Kg	+275
Fat Kg	+26.0
Fat %	+0.19
Protein Kg	+18.9
Protein %	+0.12
Reliability	69%

Young Genomic Pedigree Index

- Praser is one of the top Daughter Fertility bull available at +14.8
- Daughters will be strong and robust with excellent longevity in the herd
- Use Praser to improve legs and feet with excellent locomotion
- Maintains production with tremendous lift in fat and protein percentages

MANAGEMENT TRAITS		AHDB 04/19
Fertility Index	+14.8	Improver
Lifespan	+0.5	Improver
Somatic Cell Count	-13	Improver
Mastitis	-1	Improver
TB Advantage	+0.9	Desirable
Lameness Advantage	+0.6	Improver
Maintenance	+15	Desirable
Calf Survival	+1.3	Improver
Direct Calving Ease	+0.4	Easy

Below Average Average Above Average

YOUNG GENOMIC PEDIGREE INDEX		HUKI 04/19
Type Merit	+1.44	Excellent
Mammary	+1.08	Excellent
Legs & Feet	+1.26	Excellent
Stature	+0.69	160 cm
Chest Width	+1.18	Wide
Body Depth	+0.31	Deep
Angularity	-0.41	Open Rib
Rump Angle	+0.28	Low Pins
Rump Width	+0.98	Wide
Rear Leg Side	-0.39	Sickled
Foot Angle	+0.67	Steep
Fore Udder Att	+0.78	Tight
Rear Udder Ht	+0.99	Very High
Udder Support	+0.78	Strong
Udder Depth	+1.06	20cm Above
Front Teat Pl.	+1.13	Close
Teat Length	+0.56	Long
Rear Teat Pl.	+0.71	Close
Teat Pos. Side	+0.03	Apart
Temperament	-0.48	Good
Ease of Milk	+0.50	Fast
Locomotion	+1.32	Excellent

-2 +2

Holstein Sires

Sexed

RECOIL



Peak AltaRecoil-ET
 HB No: 65003130641796
 AltaSpring X Jacey X Robust

A2A2 AI Code: HO4738
 Source: USA
 DOB: 28.05.15



MGD: Blumenfeld Robust 3985 EX90

Holstein Genomic Production Proof

DairyCo Breeding+	PTA April 2019
PLI	£709
Milk Kg	+802
Fat Kg	+25.7
Fat %	-0.07
Protein Kg	+28.3
Protein %	+0.03
Reliability	69%

Young Genomic Pedigree Index

- *A unique sire that has fantastic type without increasing Stature*
- *Massive Daughter Fertility and outstanding udders*
- *Beautiful progeny showing a lot of promise on local farms*
- *A very strong lineup of sires in his pedigree*

MANAGEMENT TRAITS

AHDB 04/19

Fertility Index	+12.0	Improver
Lifespan	+0.6	Improver
Somatic Cell Count	-12	Improver
Mastitis	-1	Improver
TB Advantage	+1.4	Desirable
Lameness Advantage	+2.6	Improver
Maintenance	+1	Desirable
Calf Survival	+0.1	Improver
Direct Calving Ease	0	Easy

Below Average Average Above Average

YOUNG GENOMIC PEDIGREE INDEX

HUKI 04/19

Type Merit	+2.66	Excellent
Mammary	+2.00	Excellent
Legs & Feet	+1.64	Excellent
Stature	+0.03	160 cm
Chest Width	+0.37	Wide
Body Depth	-0.24	Deep
Angularity	+0.83	Open Rib
Rump Angle	+0.20	Low Pins
Rump Width	+0.36	Wide
Rear Leg Side	-0.21	Sickled
Foot Angle	+0.54	Steep
Fore Udder Att	+0.94	Tight
Rear Udder Ht	+2.21	Very High
Udder Support	+2.49	Strong
Udder Depth	+1.16	20cm Abve
Front Teat Pl.	+1.45	Close
Teat Length	-1.15	Long
Rear Teat Pl.	+1.98	Close
Teat Pos. Side	+1.68	Apart
Temperament	+0.69	Good
Ease of Milk	+1.10	Fast
Locomotion	+1.77	Excellent

-2

+2

TOPSHOT



Bomaz AltaTopshot ET A2A2 AI Code: HO4739
 HB No: 65000073953444 Source: USA
 Supershot X AltaEmbassy X Robust DOB: 10.06.15



AltaTopshot

Holstein Genomic Production Proof

DairyCo Breeding+ PTA April 2019

PLI	£728
Milk Kg	+1009
Fat Kg	+36.3
Fat %	-0.04
Protein Kg	+33.4
Protein %	+0.01
Reliability	69%

Young Genomic Pedigree Index

- **Ideal sire for commercial milk production herds, combining massive production with strong robust cows**
- **Average Stature, wide chests and low angularity make Topshot very popular**
- **Very impressive progeny on local farms**

YOUNG GENOMIC PEDIGREE INDEX

HUKI 04/19

Type Merit	+1.23	Excellent
Mammary	+0.97	Excellent
Legs & Feet	+0.93	Excellent
Stature	+0.32	160 cm
Chest Width	+0.79	Wide
Body Depth	-0.57	Deep
Angularity	-0.19	Open Rib
Rump Angle	+0.74	Low Pins
Rump Width	+0.94	Wide
Rear Leg Side	+0.27	Sickled
Foot Angle	-0.16	Steep
Fore Udder Att	+0.64	Tight
Rear Udder Ht	+0.62	Very High
Udder Support	+1.10	Strong
Udder Depth	+0.28	20cm Above
Front Teat Pl.	-0.18	Close
Teat Length	+0.39	Long
Rear Teat Pl.	+0.64	Close
Teat Pos. Side	-0.02	Apart
Temperament	+0.27	Good
Ease of Milk	-0.32	Fast
Locomotion	+1.00	Excellent

MANAGEMENT TRAITS

AHDB 04/19

Fertility Index	+5.6	Improver
Lifespan	+0.5	Improver
Somatic Cell Count	-17	Improver
Mastitis	-2	Improver
TB Advantage	-0.3	Desirable
Lameness Advantage	+2.8	Improver
Maintenance	+8	Desirable
Calf Survival	+1.5	Improver
Direct Calving Ease	+0.1	Easy

Below Average Average Above Average

-2

+2

Holstein Sires

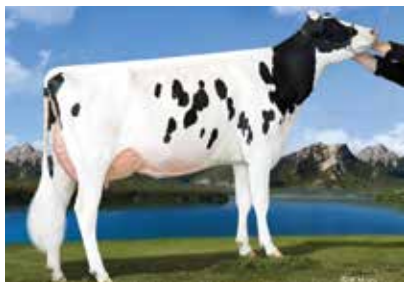
Sexed

ABEL

Limited Supply

Peak Jerod Abel ET
HB No: 65003014466165
Jerod X Mogul X Freddie

A2A2 AI Code: HO4215
Source: Holland
DOB: 16.03.14



Dam: OCD Mogul Abracadabra ET

Holstein Interbull Production Proof	
DairyCo Breeding+	PTA 04/19
PLI	£513
Milk Kg	+111
Fat Kg	+22.4
Fat %	+0.23
Protein Kg	+12.0
Protein %	+0.11
Reliability	85%

Type Merit	Mammary	Legs + Feet	Fertility	Lifespan	SCC
+1.82	+1.47	+1.34	+10.1	+0.5	-20

Massive Daughter Fertility at +10.1

Improves all Management Traits

Superb All Round Sire for Production and Components

AMBASSADOR

Limited Supply

Co-Op Troy Ambassador ET
HB No: 65003126539693
Troy X Supersire X Superstition

A2A2 AI Code: HO4589
Source: USA
DOB: 11.01.15



Dam: Co-Op Suprsre Apple 7087-ET

Holstein Interbull Production Proof	
DairyCo Breeding+	PTA 04/19
PLI	£563
Milk Kg	+641
Fat Kg	+21.7
Fat %	-0.04
Protein Kg	+22.5
Protein %	+0.02
Reliability	70%

Type Merit	Mammary	Legs + Feet	Fertility	Lifespan	SCC
+1.02	+0.96	+0.69	+8.7	+0.5	-8

Exciting Troy son from Supersire X Superstition

Excellent Milk Production sire with Components to match

Very good Daughter Fertility with Excellent Lifespan

BOUNCER

Limited Supply

Delta Bouncer
HB No: 63000944581881
Brentano X Jasper X Titanium

A1A2 AI Code: HO5220
Source: Holland
DOB: 22.07.16



MGD: Delta Babetje VG85

Holstein Genomic Production Proof	
DairyCo Breeding+	PTA 04/19
PLI	£728
Milk Kg	+417
Fat Kg	+24.9
Fat %	+0.10
Protein Kg	+23.4
Protein %	+0.12
Reliability	64%

Type Merit	Mammary	Legs + Feet	Fertility	Lifespan	SCC
+1.26	+1.31	+0.89	+7.4	+0.6	-32

High Ranking PLI Sire

Tremendous improvement in all management traits

Excellent sire for improving udders

Positive component percentages

CABRIOLET

Limited Supply

Co-Op Robust Cabriolet ET
HB No: 65000069560690
Robust X Planet X Ramos

A1A2 AI Code: HO2504
Source: USA
DOB: 27.06.11



Daughter: Aardema Cabriolet 7820

Holstein Interbull Production Proof	
DairyCo Breeding+	PTA 04/19
PLI	£703
Milk Kg	+646
Fat Kg	+39.5
Fat %	+0.17
Protein Kg	+23.9
Protein %	+0.03
Reliability	99%

Type Merit	Mammary	Legs + Feet	Fertility	Lifespan	SCC
+1.57	+1.04	+1.64	+3.4	+0.3	-11

Superb production and components

Excellent in all management traits

UK Proven

HARPON



Harpon JB

A2A2

Montbelliarde

HB No: 3921920863

Source: France

Flipex JB X Tilleul JB

DOB: 23.11.12



Harpon JB

Montbelliarde Production Proof	
France	April 2019
Milk Kg	+751
Fat Kg	+50.0
Fat %	+2.6
Protein Kg	+37
Protein %	1.5
Reliability	95%
Daughters / Herds	258 / 177
INEL (Prod. Index)	48
ISU (Total Merit)	154

- **One of the Top Bulls Available**
- **High Production with fantastic Components**
- **Suitable for Cross Breeding**
- **Recommended for Robotic Milking**

DAUGHTER CONFORMATION		France 04/19
Overall Type	113	Excellent
Body	119	Excellent
Rump	104	Excellent
Feet & Legs	110	Excellent
Teats	105	Excellent
Udder	101	Excellent
Muscularity	103	Excellent

88

112

MANAGEMENT TRAITS	
Reproduction	-0.7
Udder Health	+0.5
Longevity	+0.6
Calving Ease	88
Milking Speed	103
Temperament	102

Sexed

Montbelliarde

VR VIMO



VR Vimo A2A2 Danish Red
 HB No: 38094 Source: Denmark
 VR Vlijer X K Rockstar X R Fastrup DOB: 12.12.17



VR Vimo

Danish Genomic Production Index	
Viking Genetics	June 2019
Production	117
Milk Kg	100
Fat Kg	120
Fat %	125
Protein Kg	108
Protein %	114
Reliability	70%

Young Genomic Pedigree Index

- **Ranked at the Top of the Breed**
- **Excellent Health Traits**
- **Superb Udders**
- **Tremendous Components**

MANAGEMENT TRAITS		Denmark 06/19	
Daughter Fertility	100		Improver
Longevity	110		Improver
Udder Health	113		Improver
General Health	104		Improver
Calvings, Sire	102		Easy
Hoof Health	121		Improver
Youngstock Survival	107		Improver
Milkability	100		Improver
Temperament	105		Improver

DANISH GENOMIC CONFORMATION		06/19	
Frame	114		Excellent
Feet and Legs	115		Excellent
Udder	125		Excellent
Stature	110		High
Dairy Form	112		Angular
Chest Width	109		Wide
Body Depth	109		Deep
Rump Width	109		Wide Pins
Rump Angle	88		Low Pins
Rear Legs Side	98		Sickled
Rear Legs Rear	112		Parallel
Foot Angle	113		Steep
Fore Udder Attach	117		Strong
Rear Udder Ht	117		High
Rear Udder Width	115		Wide
Suspensory Lig.	113		Strong
Udder Depth	119		Shallow
Udder Balance	124		Deep
Teat Length	116		Long
Teat Thickness	105		Thick
Front Teat Pl.	106		Close
Rear Teat Pl.	103		Close

Sexed Danish Red



VJ James

Danish Genomic Production Index	
Viking Genetics	June 2019
Production	115
Milk Kg	102
Fat Kg	115
Fat %	107
Protein Kg	109
Protein %	108
Reliability	75%

Young Genomic Pedigree Index

- **Excellent Component Improver**
- **Suitable for Crossbreeding**
- **Recommended for Robotic Milking**
- **Improves all Health Traits**

MANAGEMENT TRAITS		Denmark 06/19	
Daughter Fertility	108		Improver
Longevity	104		Improver
Udder Health	108		Improver
General Health	105		Improver
Calvings, Sire	96		Easy
Hoof Health	104		Improver
Youngstock Survival	108		Improver
Milkability	106		Improver
Temperament	98		Improver

DANISH GENOMIC CONFORMATION		06/19	
Frame	111		Excellent
Feet and Legs	107		Excellent
Udder	103		Excellent
Stature	105		High
Dairy Form	110		Angular
Chest Width	101		Wide
Body Depth	103		Deep
Rump Width	110		Wide Pins
Rump Angle	82		Low Pins
Rear Legs Side	99		Sickled
Rear Legs Rear	111		Parallel
Foot Angle	102		Steep
Fore Udder Attach	96		Strong
Rear Udder Ht	105		High
Rear Udder Width	100		Wide
Suspensory Lig.	101		Strong
Udder Depth	104		Shallow
Udder Balance	101		Deep
Teat Length	105		Long
Teat Thickness	94		Thick
Front Teat Pl.	89		Close
Rear Teat Pl.	90		Close

REMMEL



Remmel

A2A2

Fleckvieh

HB No: DE0946581932

Source: Germany

Ricki X Rumgo

DOB: 25.03.12



Daughter: Naoam

Fleckvieh Production Index	
Germany	April 2019
Milk Kg	+1133
Fat Kg	+34
Fat %	-0.15
Protein Kg	+39
Protein %	-0.01
Reliability	99%
Milk Index	125
GZW	125

1016 Daughters in 745 Herds

- *One of the Top Production Sires available*
- *Exceptional Type Traits*
- *Daughter Proven*
- *Improves Muscularity*



Daughter: Luta

FLECKVIEH DAUGHTER CONFORMATION 04/19

Frame	119	Excellent
Feet and Legs	102	Excellent
Udder	125	Excellent
Muscularity	112	Excellent
Stature	116	High
Body Length	116	Long
Body Depth	119	Deep
Rump Angle	103	Low Pins
Rump Width	123	Wide Pins
Rear Legs Side	98	Sickled
Hock Quality	91	Steep
Pasterns	102	Good
Hoof Height	119	High
Fore Udder Leng.	126	Long
Rear Udder Leng.	101	Long
Fore Udder Attach	112	Strong
Front Teat Pl.	131	Close
Rear Teat Pl.	122	Close
Udder Depth	105	Shallow
Central Ligament	108	Strong
Teat Length	100	Long
Teat Thickness	111	Thick

At Your Service . . .

Headquarters and Stud Facility	Ballycraigy	028 9083 3123
Breeding Information	Ivan Minford	078 3118 9852 028 9083 3123 iminford@ai-services.co.uk
	Michelle Hill	028 9083 3123 mhill@ai-services.co.uk

BREEDING SPECIALISTS

ANTRIM / LONDONDERRY	Ben Mallon	078 8444 3899
	Ivan Minford	078 3118 9852
	Gary Henderson	079 8934 6226
DOWN / ARMAGH	David Dunlop	079 7660 5701
	Nigel Spence	078 0927 4141
FERMANAGH / TYRONE	John Sproule	077 7816 9263
	Jonathan Kelso	079 1949 6232
	David Vance	077 9584 1306
	William Maxwell	077 1355 3629
EMBRYO TRANSFER	David McCall	077 7880 5357
STUD MANAGER	Robin Boyd	077 9934 6784
DIY TRAINING	David Vance	077 9584 1306



Ai SERVICES

(NORTHERN IRELAND) LTD

Ballycraigy 671 Antrim Road Newtownabbey Co Antrim BT36 4RL

Tel: 028 9083 3123 Fax: 028 9084 2640

Web: www.ai-services.co.uk Email: info@ai-services.co.uk

To Book a Service Call
FREEPHONE 0800 17 11 11