

Holstein Interbull Production Proof

PTA 2010 (08/11)

PLI	Milk Kg	Fat Kg	Fat %	Protein Kg	Protein %	Reliability	UK Daughters	UK Herds
£187	+194	+20.0	+0.15	+10.4	+0.05	98%	212	69



Northern Irish Leif Daughters

HIGHLIGHTS

- No. 3 UK Proven Sire
- Widespread Farmer Satisfaction
- Longevity and Fertility

BREEDING PROFILE

Leif daughters have made a big impact in herds across Northern Ireland. Exceptional body strength with wide rumps are evident in all the daughters. The milking progeny have strong legs and feet and sound udders with exceptional health traits.



Carnhill Leif Clare 2 EX90



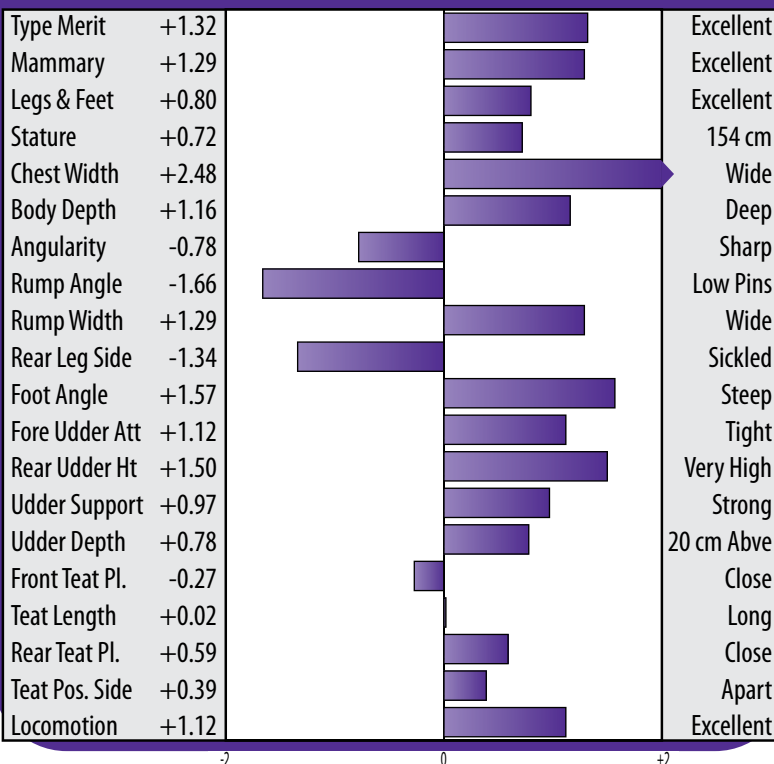
Leif Daughter Group



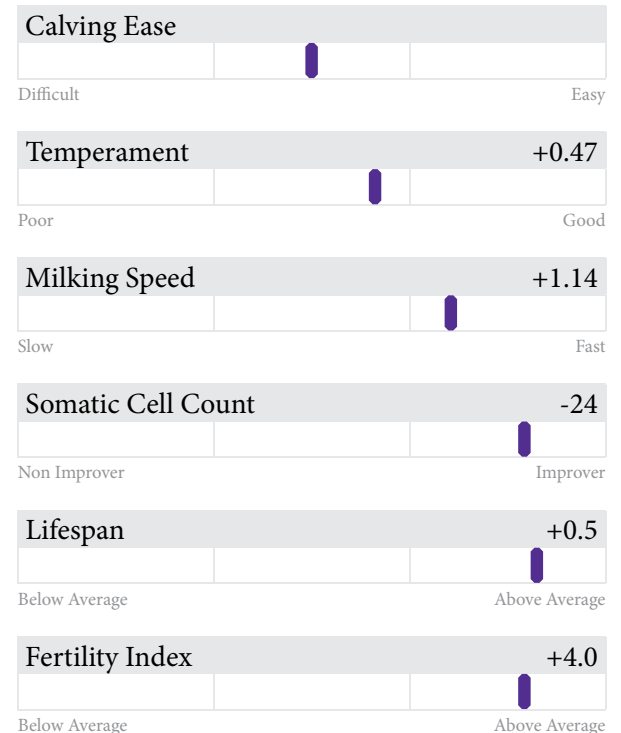
Liane

UK DAUGHTER CONFORMATION

HOLSTEIN UK & IRELAND 08/11



MANAGEMENT



LOGAN

Co-Op Oman Logan ET

Source: USA

HB No: 65000062030793

DOB: 22.11.04

Pedigree: O-Man X Marshall X Rudolph

Holstein Interbull Production Proof

PTA 2010 (08/11)

PLI	Milk Kg	Fat Kg	Fat %	Protein Kg	Protein %	Reliability	Daughters	Herds
£236	+963	+35.7	-0.03	+30.1	-0.01	73%	105	72



Brown Star Logan 2017

HIGHLIGHTS

- Massive Milk Production
- Strong Robust Cows
- Calving Ease

BREEDING PROFILE

Logan is a high ranking international sire, producing daughters with exceptional production in both milk and components. Progeny have strong feet and legs with functional udders and excellent scores for Somatic Cell Count and Lifespan.



Grand View Logan 2847



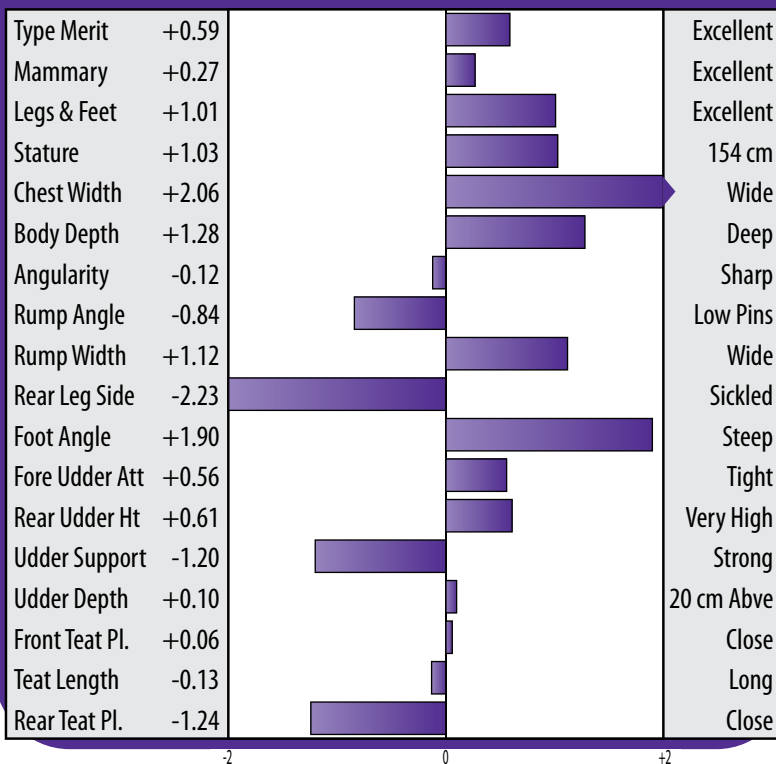
Jaeger Logan 2158



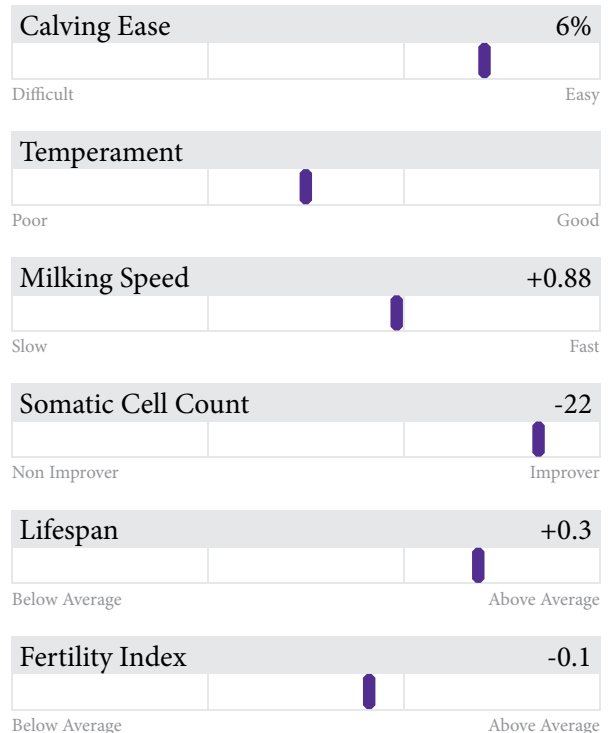
Jaeger 2158 Udder

DAUGHTER CONFORMATION

HOLSTEIN UK & IRELAND 08/11



MANAGEMENT



LOYDIE

Available as
Gen Choice
75% Sexed Semen

Co-Op Oman Loydie ET

Source: USA

HB No: 65000062030790

DOB: 08.11.04

Pedigree: O-Man X Marshall X Rudolph

Holstein Interbull Production Proof

PTA 2010 (08/11)

PLI	Milk Kg	Fat Kg	Fat %	Protein Kg	Protein %	Reliability	Daughters	Herds
£215	+456	+27.4	+0.11	+23.3	+0.10	72%	77	51



Sweigart Loydie 717

HIGHLIGHTS

- A Component Leader
- Excellent Management Traits
- Calving Ease

BREEDING PROFILE

Loydie just gets better and better with every proof index. He is probably one of the best all-round O-Man sons available with a PLI of £215. Daughters excel in body strength and legs and feet. Udders are also a strong point for this sire.



Schreiner Loydie Nectar



Schreiner Nectar Udder



Muranda Mrshal Lizy, dam of Loydie

DAUGHTER CONFORMATION

HOLSTEIN UK & IRELAND 08/11

Type Merit	+0.79	Excellent
Mammary	+0.50	Excellent
Legs & Feet	+0.97	Excellent
Stature	+1.48	154 cm
Chest Width	+2.64	Wide
Body Depth	+1.63	Deep
Angularity	-0.25	Sharp
Rump Angle	-0.17	Low Pins
Rump Width	+0.93	Wide
Rear Leg Side	-1.66	Sickled
Foot Angle	+1.43	Steep
Fore Udder Att	+0.17	Tight
Rear Udder Ht	+1.22	Very High
Udder Support	+0.54	Strong
Udder Depth	-0.37	20 cm Abve
Front Teat Pl.	+0.33	Close
Teat Length	+0.41	Long
Rear Teat Pl.	-0.40	Close

MANAGEMENT

Calving Ease	4%
Temperament	n/a
Milking Speed	n/a
Somatic Cell Count	-16
Lifespan	+0.2
Fertility Index	+1.9

MASCOL

Mascol ET Source: Germany
 HB No: 60000578891748 DOB: 13.07.00
 Pedigree: Mtoto X Rudolph X Mascot

Holstein Interbull Production Proof

PTA 2010 (08/11)

PLI	Milk Kg	Fat Kg	Fat %	Protein Kg	Protein %	Reliability	UK Daughters	UK Herds
£175	+262	+18.4	+0.10	+14.7	+0.08	99	2114	371

Holstein Sires



HIGHLIGHTS

- No. 5 UK Proven Sire
- Longevity
- Widespread Proof

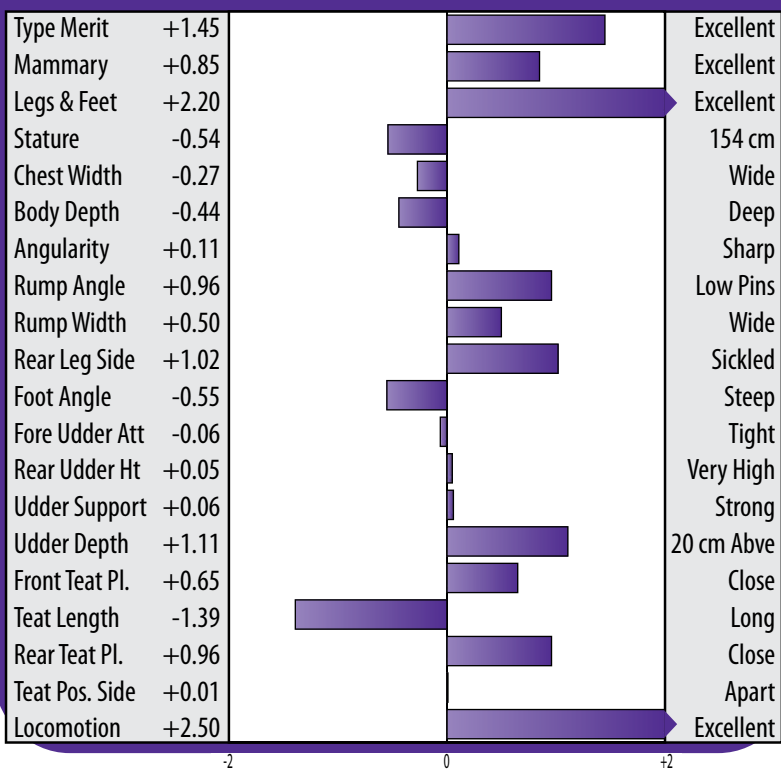
BREEDING PROFILE

Mascol daughters mature and develop in every lactation, with the earliest daughters now in their 4th lactation. Fantastic legs and feet and excellent locomotion are evident in the progeny.

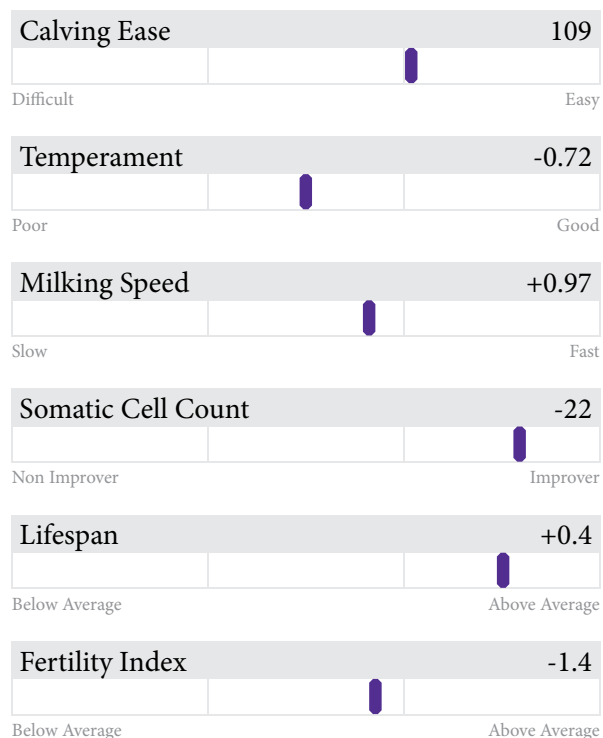


UK DAUGHTER CONFORMATION

HOLSTEIN UK & IRELAND 08/11



MANAGEMENT



MINDORO

Gen Choice
90% Sexed Semen
Only

Mr Pine-Tree Mindoro CRI ET

Source: USA

HB No: 65000065801527

DOB: 17.01.09

Pedigree: Auden X Outside X Rudolph

Holstein Genomic Proof

08/11

PLI	Milk Kg	Fat Kg	Fat %	Protein Kg	Protein %	Reliability
£175	+671	+26.1	+0.00	+19.9	-0.02	78%



Pine-Tree Outside Mint-ET VG87 VGMS, dam of Mindoro

HIGHLIGHTS

- ✓ Genomically Proven Sire
- ✓ Incredible Udder Attachments
- ✓ Free from O-Man, Shottle & Goldwyn bloodlines

BREEDING PROFILE

Mindoro is an interesting new outcross sire from an excellent breeding cow family.

Impressive milk production with excellent fat and protein kilograms.



Udder of Dam



Mr Pine-Tree Mindoro CRI-ET

DAUGHTER CONFORMATION

Genomic Conversion 08/11

Type Merit	+1.62	Excellent
Mammary	+1.47	Excellent
Legs & Feet	+1.30	Excellent
Stature	+1.30	154 cm
Chest Width	+0.51	Wide
Body Depth	+0.69	Deep
Angularity	+1.30	Sharp
Rump Angle	-0.06	Low Pins
Rump Width	+1.26	Wide
Rear Leg Side	-0.29	Sickled
Foot Angle	+2.03	Steep
Fore Udder Att	+1.64	Tight
Rear Udder Ht	+1.96	Very High
Udder Support	+1.39	Strong
Udder Depth	+0.92	20 cm Abve
Front Teat Pl.	+1.25	Close
Teat Length	+0.07	Long
Rear Teat Pl.	+1.21	Close

MANAGEMENT

Calving Ease	9%
Difficult	Easy
Temperament	n/a
Poor	Good
Milking Speed	n/a
Slow	Fast
Somatic Cell Count	-9
Non Improver	Improver
Lifespan	+0.3
Below Average	Above Average
Sire Fertility (US)	-0.6
Below Average	Above Average

PLEASURE

Higher
Premium

Aalshorst Pleasure

Source: Holland

HB No: 63000416318869

DOB: 25.11.04

Pedigree: Talent X Merton X Goldie

Holstein Interbull Production Proof

PTA 2010 (08/11)

PLI	Milk Kg	Fat Kg	Fat %	Protein Kg	Protein %	Reliability	Daughters	Herds
£136	+228	+12.0	+0.04	+12.6	+0.06	78%	117	70



HIGHLIGHTS

- Great Type
- Wide Rumps
- All Rounder

BREEDING PROFILE

Pleasure is an exceptional Red and White sire, suitable for breeding cows with improved udders, legs and feet. Pleasure is also recommended as a calving ease sire and a component specialist.



DAUGHTER CONFORMATION

HOLSTEIN UK & IRELAND 08/11

Type Merit	+1.88	Excellent
Mammary	+1.76	Excellent
Legs & Feet	+1.61	Excellent
Stature	+0.39	154 cm
Chest Width	+1.13	Wide
Body Depth	+1.03	Deep
Angularity	+0.75	Sharp
Rump Angle	-0.09	Low Pins
Rump Width	+2.08	Wide
Rear Leg Side	-0.63	Sickled
Foot Angle	+1.65	Steep
Fore Udder Att	+1.75	Tight
Rear Udder Ht	+1.64	Very High
Udder Support	+1.48	Strong
Udder Depth	+0.22	20 cm Above
Front Teat Pl.	+2.09	Close
Teat Length	-1.86	Long
Rear Teat Pl.	+1.96	Close

MANAGEMENT

Calving Ease	103
Temperament	102
Milking Speed	106
Somatic Cell Count	-9
Lifespan	+0.3
Fertility Index	-0.4

RADICAL

Higher
Premium

Radical

Source: France

HB No: 71002921632635

DOB: 25.02.00

Pedigree: Jocko Besne X Catalyst X Esquimau

Holstein Interbull Production Proof

PTA 2010 (08/11)

PLI	Milk Kg	Fat Kg	Fat %	Protein Kg	Protein %	Reliability	UK Daughters	UK Herds
£148	+593	+23.3	+0.00	+21.3	+0.02	97	194	59



Tacite

HIGHLIGHTS

- Improves Milk Production
- UK Proven
- Positive Components

BREEDING PROFILE

Radical is a superb all-round sire. There is great farmer satisfaction with milking daughters, who show excellent feet and legs with good locomotion.



Beausse



Tomate



Tacite

UK DAUGHTER CONFORMATION

HOLSTEIN UK & IRELAND 08/11

Type Merit	+0.27	Excellent
Mammary	+0.09	Excellent
Legs & Feet	+0.80	Excellent
Stature	+0.00	154 cm
Chest Width	+0.96	Wide
Body Depth	+1.11	Deep
Angularity	+0.54	Sharp
Rump Angle	-0.01	Low Pins
Rump Width	-0.16	Wide
Rear Leg Side	-1.90	Sickled
Foot Angle	+0.99	Steep
Fore Udder Att	-0.25	Tight
Rear Udder Ht	+0.70	Very High
Udder Support	+0.17	Strong
Udder Depth	-1.04	20 cm Above
Front Teat Pl.	+0.82	Close
Teat Length	+0.45	Long
Rear Teat Pl.	+0.22	Close
Teat Pos. Side	+0.42	Apart
Locomotion	+0.84	Excellent

MANAGEMENT

Calving Ease	90
Difficult	Easy
Temperament	+0.56
Poor	Good
Milking Speed	+1.33
Slow	Fast
Somatic Cell Count	+1
Non Improver	Improver
Lifespan	+0.1
Below Average	Above Average
Fertility Index	-0.4
Below Average	Above Average

SANTANA

Available as
Gen Choice
90% Sexed Semen

Shadybank Shottle Santana
HB No: 65000137509256
Pedigree: Shottle X Trent X Marshall

Source: USA
DOB: 09.03.06

Holstein Interbull Production Proof

PTA 2010 (08/11)

PLI	Milk Kg	Fat Kg	Fat %	Protein Kg	Protein %	Reliability	Daughters	Herds
£184	+691	+31.4	+0.05	+22.8	+0.00	70%	84	43



Strutz Santana 3911

HIGHLIGHTS

- High Ranking Shottle Son
- Production Sire
- Great Udders

BREEDING PROFILE

Santana is a superb new Shottle son with very high production figures and an excellent all-round type score. Daughters are well above average in stature, all body traits and udders. Santana progeny have exceptional width throughout the rump area, which in turn gives room for excellent udder width and support.



Hyde Park Santana 3264



Annexstad Santana Martha



Shadybank Shottle Santana

DAUGHTER CONFORMATION

HOLSTEIN UK & IRELAND 08/11

Type Merit	+1.24		Excellent
Mammary	+1.46		Excellent
Legs & Feet	+0.35		Excellent
Stature	+2.67		154 cm
Chest Width	+1.57		Wide
Body Depth	+2.24		Deep
Angularity	+2.06		Sharp
Rump Angle	+0.58		Low Pins
Rump Width	+2.05		Wide
Rear Leg Side	+1.15		Sickled
Foot Angle	+0.50		Steep
Fore Udder Att	+1.15		Tight
Rear Udder Ht	+1.39		Very High
Udder Support	+2.05		Strong
Udder Depth	+0.85		20 cm Above
Front Teat Pl.	+2.18		Close
Teat Length	+0.94		Long
Rear Teat Pl.	+1.71		Close

MANAGEMENT

Calving Ease	9%
Difficult	Easy
Temperament	n/a
Poor	Good
Milking Speed	n/a
Slow	Fast
Somatic Cell Count	-10
Non Improver	Improver
Lifespan	+0.1
Below Average	Above Average
Fertility Index	-0.5
Below Average	Above Average

SHAMPOO

Gen Choice
75% Sexed Semen
Only

Pine-Tree Martha Shampoo-ET Source: USA
HB No: 65000062175932 DOB: 31.12.05
Pedigree: Shottle X O-Man X Rudolph

Holstein Interbull Production Proof

PTA 2010 (08/11)

PLI	Milk Kg	Fat Kg	Fat %	Protein Kg	Protein %	Reliability	Daughters	Herds
£145	+286	+18.7	+0.09	+10.3	+0.01	71%	105	49



Hillcrest Shampoo

HIGHLIGHTS

- Gen Choice 75% Sexed*
- Components Specialist*
- Calving Ease*

BREEDING PROFILE

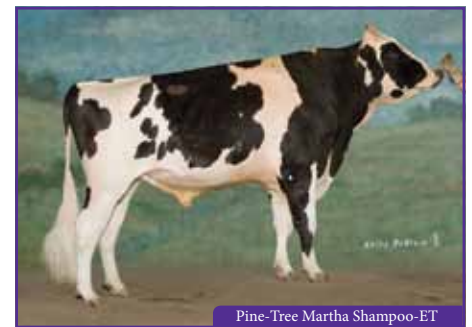
Shampoo comes from a very well known cow family in the USA, noted for their high classification scores and excellent longevity. Shampoo daughters have deep bodies, wide rumps and good udders. Progeny will also excel in the health traits with scores of -29 Somatic Cell Count & +4.3 Fertility.



Pine-Tree Martha Sheen-ET, Full Sister



Pine-Tree Missy Miranda, FS to Dam



Pine-Tree Martha Shampoo-ET

DAUGHTER CONFORMATION

HOLSTEIN UK & IRELAND 08/11

Type Merit	+0.66	Excellent
Mammary	+0.52	Excellent
Legs & Feet	+0.68	Excellent
Stature	+1.18	154 cm
Chest Width	+1.32	Wide
Body Depth	+0.94	Deep
Angularity	+0.68	Sharp
Rump Angle	-0.19	Low Pins
Rump Width	+1.33	Wide
Rear Leg Side	-0.04	Sickled
Foot Angle	+0.07	Steep
Fore Udder Att	+0.35	Tight
Rear Udder Ht	+0.37	Very High
Udder Support	+0.33	Strong
Udder Depth	+0.09	20 cm Abve
Front Teat Pl.	+1.65	Close
Teat Length	-1.07	Long
Rear Teat Pl.	+0.70	Close

MANAGEMENT

Calving Ease	8%
Temperament	n/a
Milking Speed	n/a
Somatic Cell Count	-29
Lifespan	+0.2
Fertility Index	+4.3

VOSAC MAN

Vosac Man

Source: France

HB No: 71004477604740

DOB: 25.04.04

Pedigree: O-Man X Jocko Besne X Demand

Holstein Interbull Production Proof

PTA 2010 (08/11)

PLI	Milk Kg	Fat Kg	Fat %	Protein Kg	Protein %	Reliability	Daughters	Herds
£167	+459	+18.3	+0.00	+21.5	+0.08	75%	90	82



Bulie

HIGHLIGHTS

- Beautifully Uddered Cows
- Strong Bodies
- Excellent Somatic Cell Count Score

BREEDING PROFILE

Vosac Man combines production and type all in one package. Progeny are average in stature, wide chested and display an excellent rump structure. The udders are snugly attached with good udder health.



Barcelone



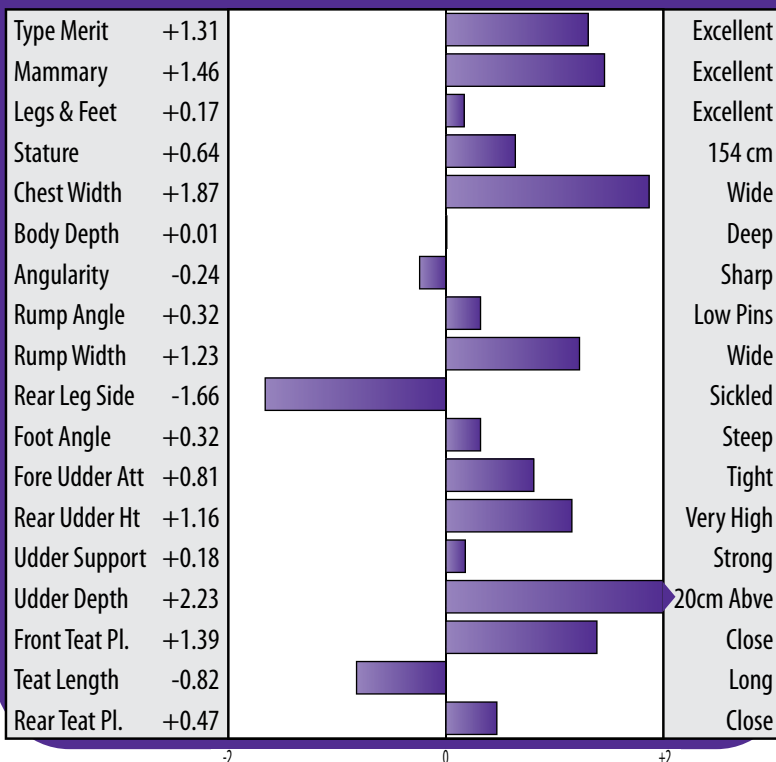
Brillante



Brasilia

DAUGHTER CONFORMATION

HOLSTEIN UK & IRELAND 08/11



MANAGEMENT

