

BERGER

Berger Source: France
 HB No: 71003545173024 DOB: 23.07.03
 Pedigree: Mascol X Garter X Jocko Besne

Holstein Interbull Production Proof

PTA 2010 (08/11)

PLI	Milk Kg	Fat Kg	Fat %	Protein Kg	Protein %	Reliability	Daughters	Herds
£154	+488	+21.8	+0.03	+19.8	+0.05	68	47	47



Dragee

HIGHLIGHTS

- Milk Production
- Legs & Feet
- Calving Ease

BREEDING PROFILE

Berger is a newly proven Mascol son from an American cow family, Rotate Jody. Berger daughters display very good rumps and rump angle with excellent udder qualities. He can also be used as a calving ease sire.



Dragee Udder



Berger

DAUGHTER CONFORMATION

HOLSTEIN UK & IRELAND 08/11

Type Merit	+1.38	Excellent
Mammary	+1.16	Excellent
Legs & Feet	+1.46	Excellent
Stature	-0.18	154 cm
Chest Width	+0.24	Wide
Body Depth	+0.46	Deep
Angularity	-0.24	Sharp
Rump Angle	+1.82	Low Pins
Rump Width	+1.03	Wide
Rear Leg Side	-0.03	Sickled
Foot Angle	+0.17	Steep
Fore Udder Att	+0.82	Tight
Rear Udder Ht	+1.31	Very High
Udder Support	+0.38	Strong
Udder Depth	+1.08	20 cm Abve
Front Teat Pl.	+1.04	Close
Teat Length	-0.42	Long
Rear Teat Pl.	+0.91	Close

MANAGEMENT

Calving Ease	91
Difficult	Easy
Temperament	+0.6
Poor	Good
Milking Speed	+1.0
Slow	Fast
Somatic Cell Count	-1
Non Improver	Improver
Lifespan	+0.1
Below Average	Above Average
Fertility Index	n/a
Below Average	Above Average

CRICKET

Ralma O-Man CF Cricket ET Source: Holland
 HB No: 65000052357928 DOB: 29.02.04
 Pedigree: O-Man X Durham X Juror

Holstein Interbull Production Proof

PTA 2010 (08/11)

PLI	Milk Kg	Fat Kg	Fat %	Protein Kg	Protein %	Reliability	Daughters	Herds
£136	+579	+14.4	-0.10	+18.5	+0.00	79%	143	119



Amarins 64

HIGHLIGHTS

- ☑ Strong Powerful Bodied Cows
- ☑ Excellent Legs and Feet
- ☑ Bred from a Proven Cow Family

BREEDING PROFILE

Cricket is a high type Dutch sire with milk production and type to match. Daughters are above average in stature, display strong body traits, wide rumps and snugly attached udders. He also will improve Somatic Cell Count at -36 and Lifespan at +0.3.



6792



Hennie 507



3341

DAUGHTER CONFORMATION

HOLSTEIN UK & IRELAND 08/11

Type Merit	+1.53		Excellent
Mammary	+1.28		Excellent
Legs & Feet	+1.23		Excellent
Stature	+1.85		154 cm
Chest Width	+3.12		Wide
Body Depth	+1.53		Deep
Angularity	+0.29		Sharp
Rump Angle	+1.21		Low Pins
Rump Width	+1.49		Wide
Rear Leg Side	-0.92		Sickled
Foot Angle	+1.75		Steep
Fore Udder Att	+1.61		Tight
Rear Udder Ht	-0.49		Very High
Udder Support	+0.34		Strong
Udder Depth	+2.38		20cm Above
Front Teat Pl.	+1.21		Close
Teat Length	-0.72		Long
Rear Teat Pl.	+0.10		Close

MANAGEMENT

Calving Ease	111
Difficult	Easy
Temperament	102
Poor	Good
Milking Speed	102
Slow	Fast
Somatic Cell Count	-36
Non Improver	Improver
Lifespan	+0.3
Below Average	Above Average
Fertility Index	-6.7
Below Average	Above Average

CURTIS

Apina Curtis

Source: Holland

HB No: 63000368449693

DOB: 23.09.03

Pedigree: Kian X Lentini X Tulip

Holstein Interbull Production Proof

PTA 2010 (08/11)

PLI	Milk Kg	Fat Kg	Fat %	Protein Kg	Protein %	Reliability	Daughters	Herds
£128	+248	+15.9	+0.08	+15.7	+0.09	79%	186	161



Patricia, 3rd Calver

HIGHLIGHTS

- Superb Fat And Protein Percentages**
- Widespread Proof in Holland**
- Exceptional Udders**

BREEDING PROFILE

Curtis daughters are uniform in type and conformation, with sound legs and feet. Udders are well attached in both front and rear. A good all-round sire for production and type.



Hanna 16



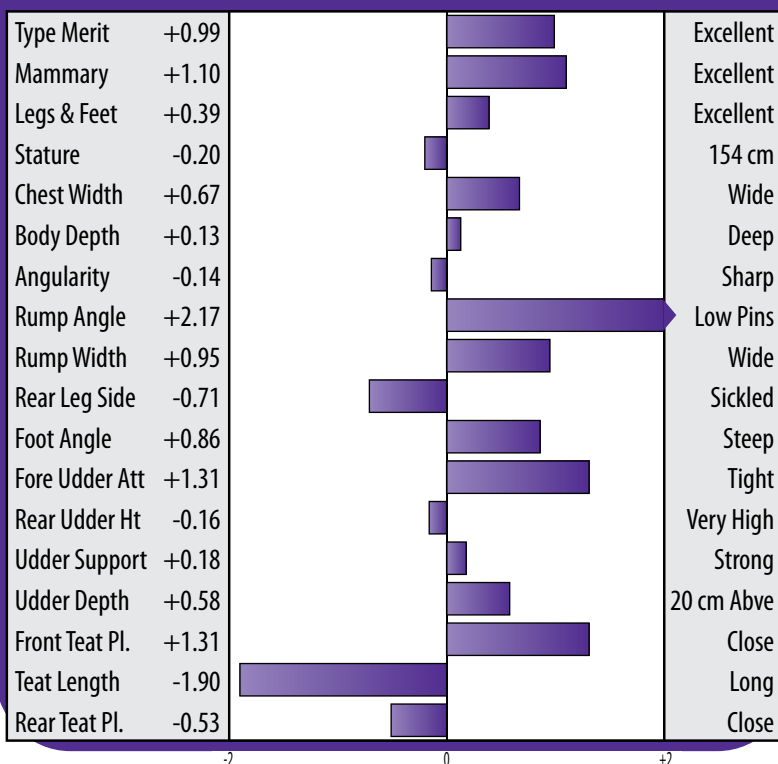
Janine 2



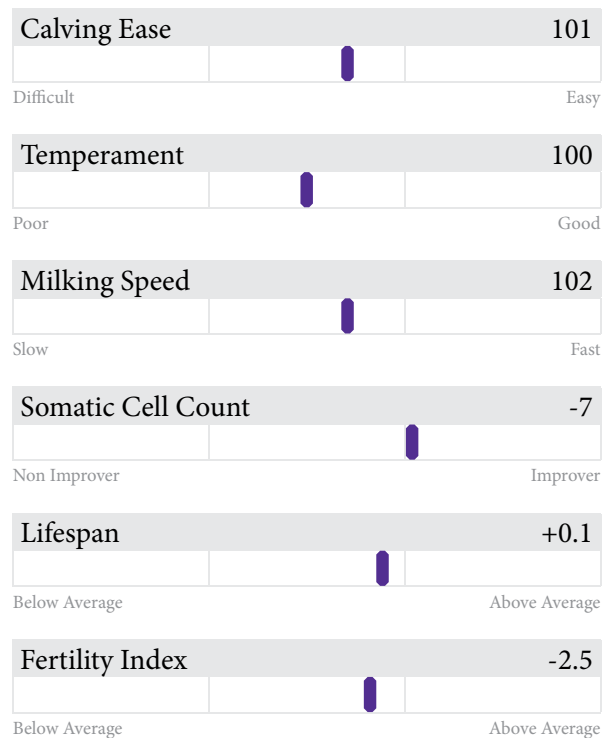
Maria 117

DAUGHTER CONFORMATION

HOLSTEIN UK & IRELAND 08/11



MANAGEMENT



FIDELITY

Delta Fidelity

Source: Holland

HB No: 63000396647605

DOB: 11.09.04

Pedigree: Kian X Lightning X Pigeonwood Red

Holstein Interbull Production Proof

PTA 2010 (08/11)

PLI	Milk Kg	Fat Kg	Fat %	Protein Kg	Protein %	Reliability	Daughters	Herds
£176	+227	+19.3	+0.13	+21.1	+0.17	79%	173	138



Sandra 3

HIGHLIGHTS

- Components, Components & more Components**
- PLI £176, +0.13% Fat & +0.17% Protein**
- Outstanding Legs and Feet**

BREEDING PROFILE

Fidelity comes highly recommended as a massive improver in components in one generation. Fidelity daughters are average in size with excellent chest width, fantastic legs and feet, and udders. Can be used as an outcross in Black and White Holstein Herds.



Jessica 20



Cornelia 118



Daughter Group at NRM 2010

DAUGHTER CONFORMATION

HOLSTEIN UK & IRELAND 08/11

Type Merit	+1.00	Excellent
Mammary	+0.61	Excellent
Legs & Feet	+1.44	Excellent
Stature	-0.71	154 cm
Chest Width	+1.58	Wide
Body Depth	+0.19	Deep
Angularity	-0.73	Sharp
Rump Angle	-0.16	Low Pins
Rump Width	-0.04	Wide
Rear Leg Side	-1.73	Sickled
Foot Angle	+1.13	Steep
Fore Udder Att	+0.41	Tight
Rear Udder Ht	+0.02	Very High
Udder Support	+0.46	Strong
Udder Depth	-0.32	20 cm Above
Front Teat Pl.	+0.92	Close
Teat Length	-1.13	Long
Rear Teat Pl.	+0.44	Close

MANAGEMENT

Calving Ease	101
Difficult	Easy
Temperament	102
Poor	Good
Milking Speed	102
Slow	Fast
Somatic Cell Count	+0
Non Improver	Improver
Lifespan	+0.2
Below Average	Above Average
Fertility Index	-2.9
Below Average	Above Average

GARNER

Coldsprings Garner CRI ET

Source: USA

HB No: 65000062030778

DOB: 22.10.04

Pedigree: O-Man X Patron X Cardinal

Holstein Interbull Production Proof

PTA 2010 (08/11)

PLI	Milk Kg	Fat Kg	Fat %	Fat Kg	Protein %	Reliability	Daughters	Herds
£221	+543	+28.3	+0.08	+19.5	+0.02	74%	137	85



Lenzen Acres Garner 286

HIGHLIGHTS

- ✓ *Fantastic Milk Production sire with outstanding Daughter Fertility & Index*
- ✓ *Strong Robust Cows*
- ✓ *PLI £221, +0.08% Fat & +0.02% Protein*

BREEDING PROFILE

Garner offers everything in one package:- Production, Type and Health Traits. Progeny from Garner display strong chests, deep bodies and wide rumps. Recommended to breed daughters with excellent longevity, lower Somatic Cell Count, and improved fertility.



Krocak Garner 1093



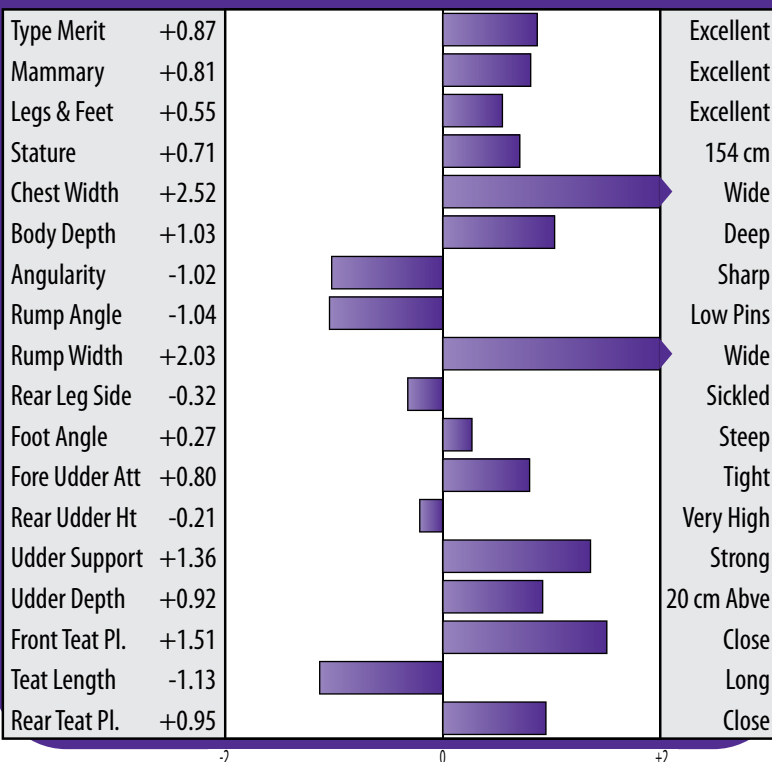
Lenzen Acres 286 Udder



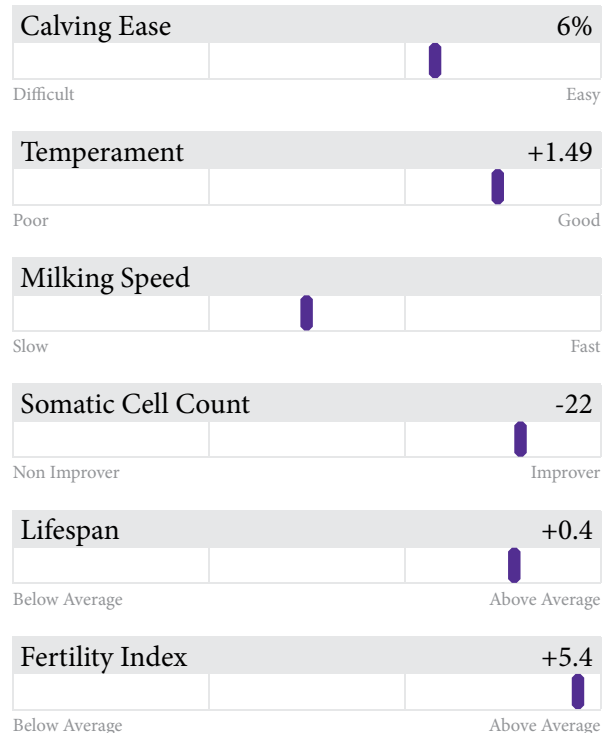
Krocak 1093 Udder

DAUGHTER CONFORMATION

HOLSTEIN UK & IRELAND 08/11



MANAGEMENT



GATEWAY

Gateway Source: Germany
 HB No: 63000431442501 DOB: 13.02.06
 Pedigree: Goldwin X Monluel X Jocko Besne

Holstein Interbull Production Proof

PTA 2010 (08/11)

PLI	Milk Kg	Fat Kg	Fat %	Fat Kg	Protein %	Reliability	Daughters	Herds
£183	+563	+19.6	-0.03	+23.2	+0.06	72%	116	82



Geraldine



Udder of Geraldine



Gateway

HIGHLIGHTS

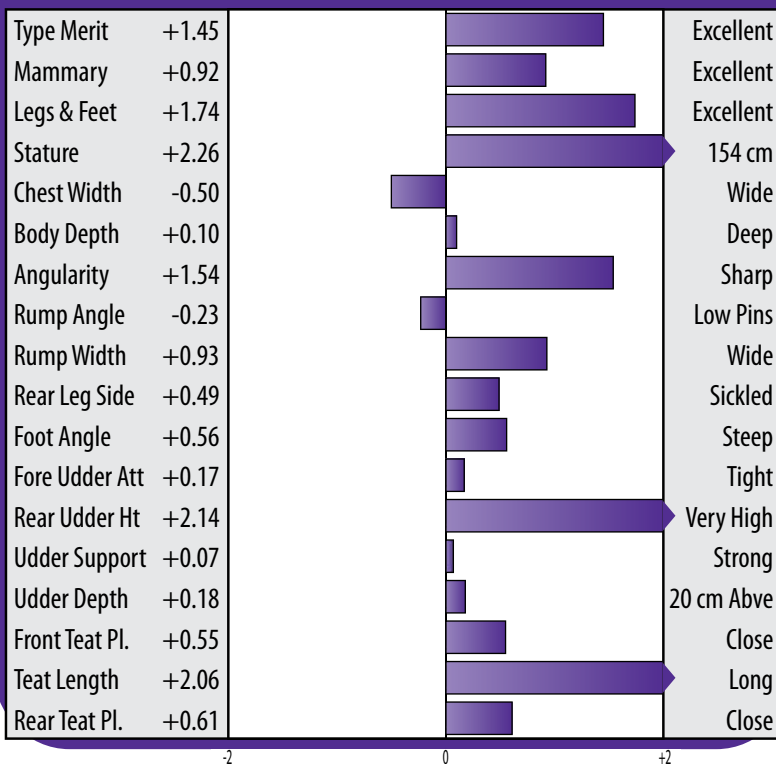
- ☑ High Milk Production Sire with very good Fat and Protein improvement
- ☑ Recommended as a Leg & Feet Specialist
- ☑ Daughters with Improved Fertility

BREEDING PROFILE

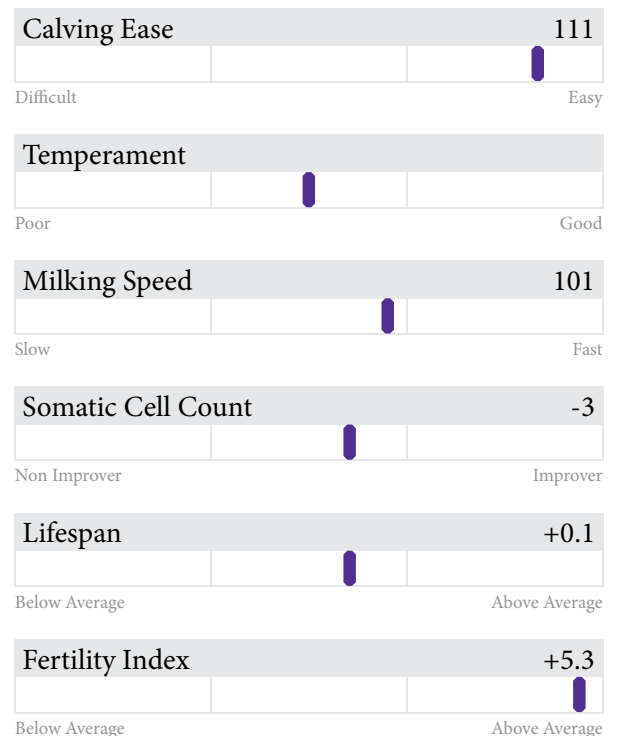
Gateway is a new and interesting German sire. Progeny display improved stature and angularity with excellent rear udders and teat length. Gateway will excel in Daughter Fertility, Somatic Cell Count and Calving Ease.

DAUGHTER CONFORMATION

HOLSTEIN UK & IRELAND 08/11



MANAGEMENT



GOLDBOY

Goldboy ET

Source: Germany

HB No: 60000350427795

DOB: 05.07.06

Pedigree: Goldwin X Ford X Metro

Holstein Interbull Production Proof

PTA 2010 (08/11)

PLI	Milk Kg	Fat Kg	Fat %	Fat Kg	Protein %	Reliability	Daughters	Herds
£150	+433	+18.4	+0.02	+12.6	-0.02	71%	95	71



Gloria

HIGHLIGHTS

- ☑ *Fantastic Type, Udders and Legs & Feet*
- ☑ *Excellent Body Depth & Chest Width*
- ☑ *Dairy cows with open rib, strong top lines*

BREEDING PROFILE

Goldboy transmits fancy type daughters with good volumes of milk from firmly attached udders. Goldboy also has the ability to improve Somatic Cell Count, Lifespan and Fertility.



Georgina



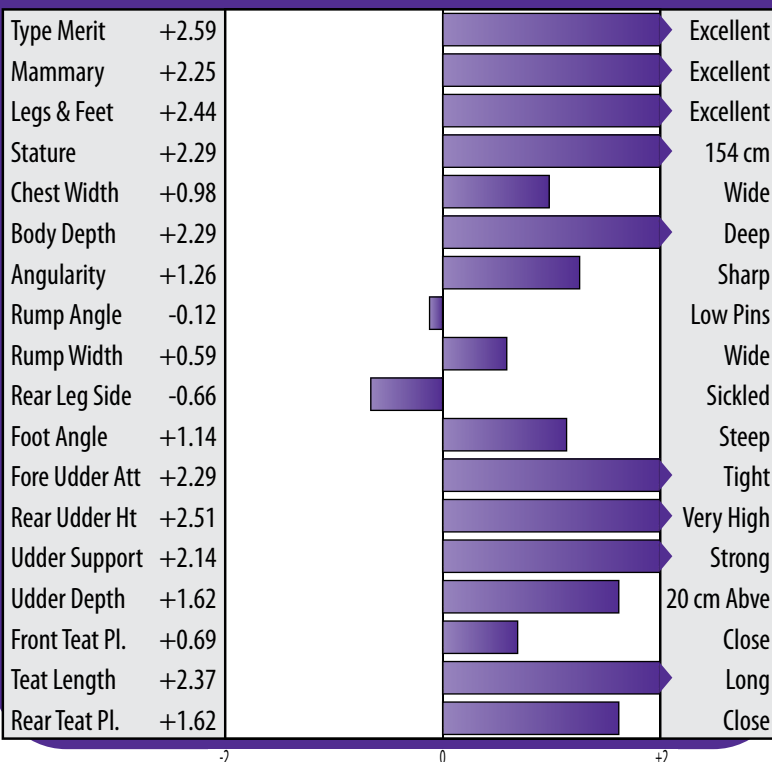
Goldlady



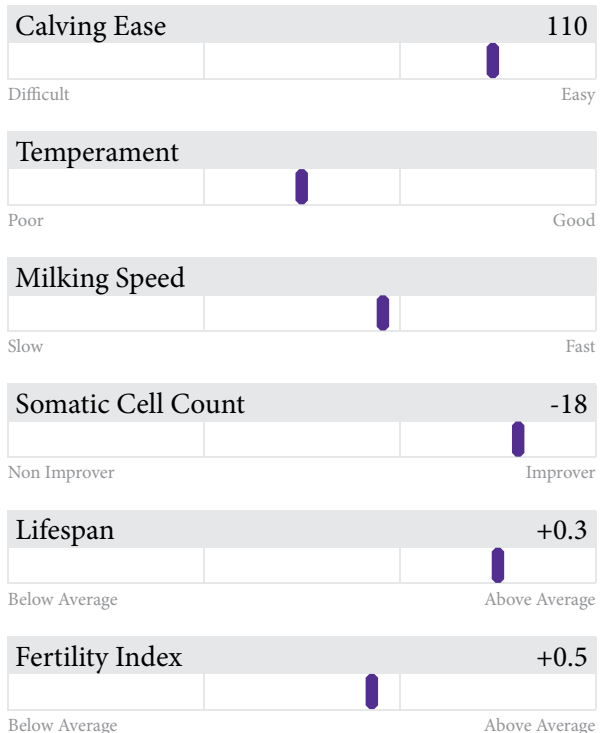
Roxy

DAUGHTER CONFORMATION

HOLSTEIN UK & IRELAND 08/11



MANAGEMENT



GUARINI

Guarini ET VG88 Source: Germany
 HB No: 60000580675108 DOB: 17.08.06
 Pedigree: Goldwyn X O-Man X Jesther

Holstein Sires

Holstein Interbull Production Proof

PTA 2010 (08/11)

PLI	Milk Kg	Fat Kg	Fat %	Protein Kg	Protein %	Reliability	Daughters	Herds
£203	+494	+20.5	+0.01	+21.9	+0.07	73%	142	69



HIGHLIGHTS

- ✓ Over £200 PLI Points
- ✓ Combines two top Health Trait Sires (Goldwyn & O-Man)
- ✓ Type and Components all in one package

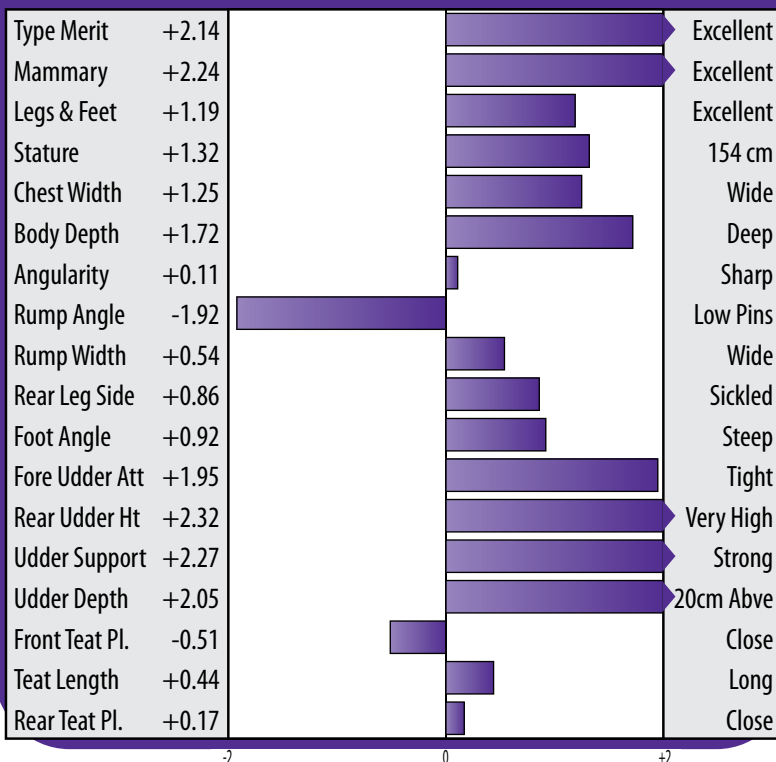
BREEDING PROFILE

Guarini transmits outstanding protein with high volumes of milk from healthy, trouble-free udders. The udders are high and wide with a very impressive suspensory ligament. He is also recommended as a Calving Ease Sire.

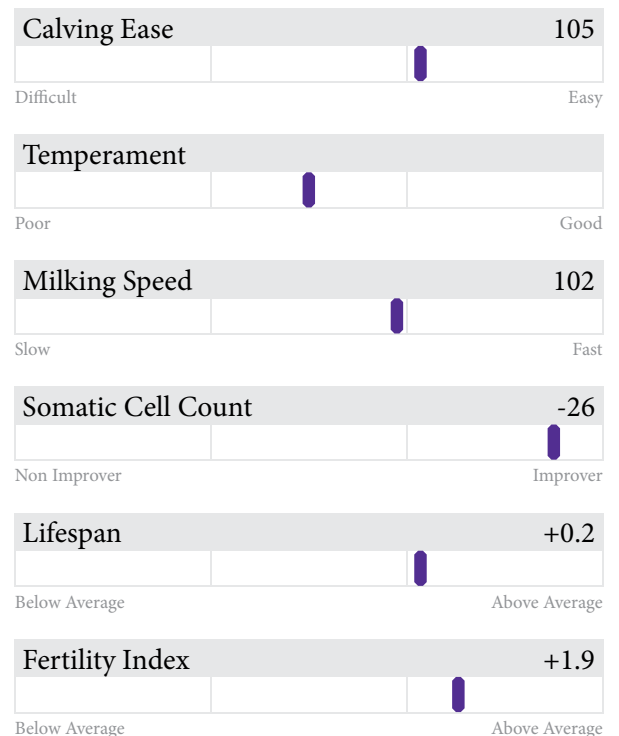


DAUGHTER CONFORMATION

HOLSTEIN UK & IRELAND 08/11



MANAGEMENT



Holstein Interbull Production Proof

PTA 2010 (08/11)

PLI	Milk Kg	Fat Kg	Fat %	Protein Kg	Protein %	Reliability	Daughters	Herds
£171	+611	+20.3	-0.04	+17.8	-0.02	73%	108	65



Genesee Holman 4521

HIGHLIGHTS

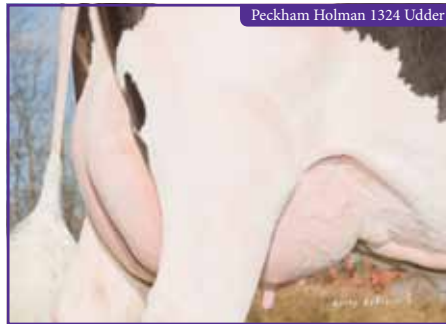
- ☑ Available in Sexed Gen Choice 75%
- ☑ High Production
- ☑ Outstanding in all Management Traits

BREEDING PROFILE

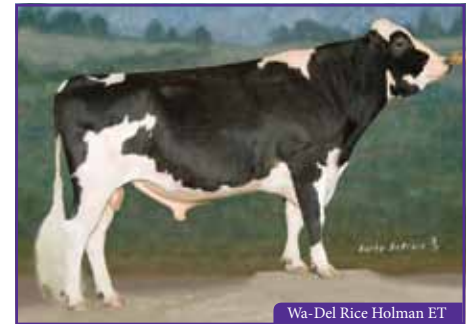
Holman is one of the best all-round sires available. This excellent O-Man son has the breeding ability to improve the overall herd health with all positive health traits, as well as superb milk production.



Genesee Holman 4537



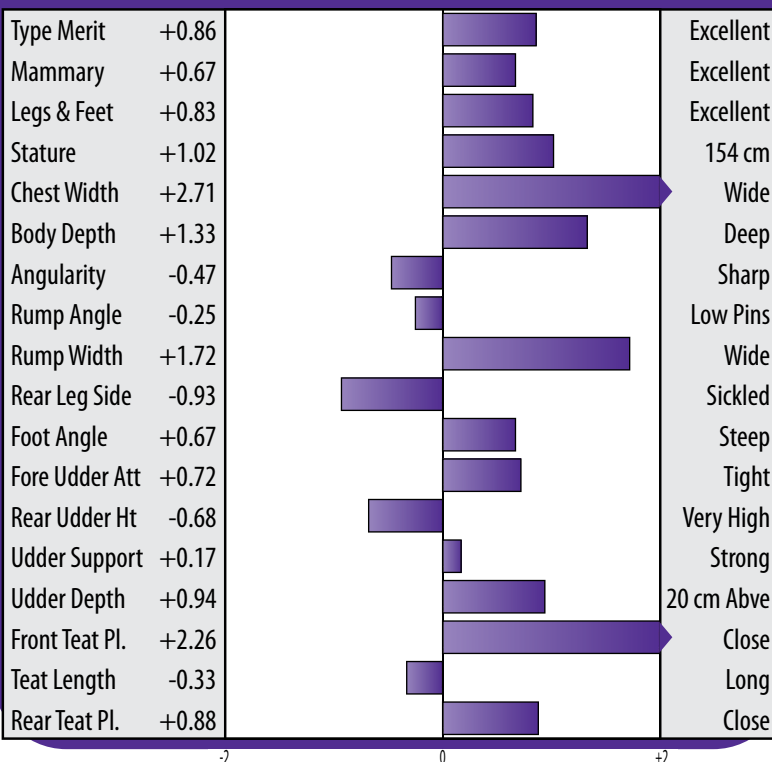
Peckham Holman 1324 Udder



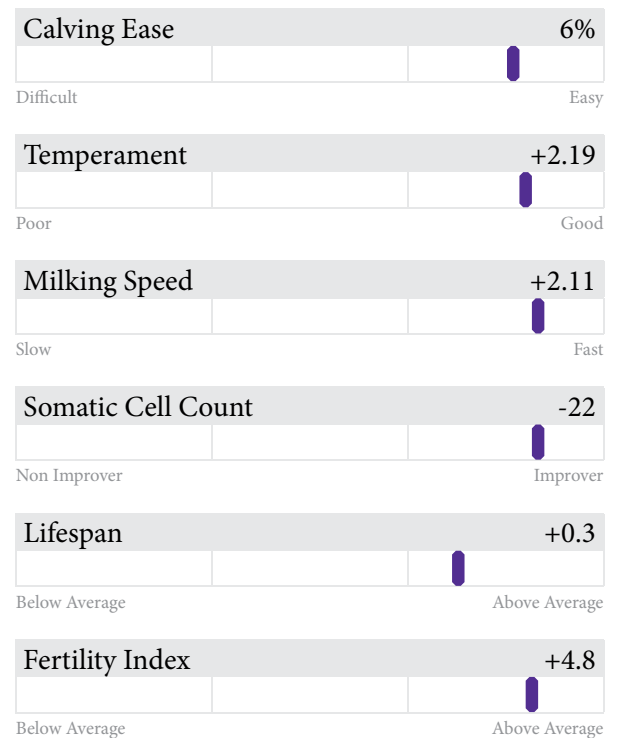
Wa-Del Rice Holman ET

DAUGHTER CONFORMATION

HOLSTEIN UK & IRELAND 08/11



MANAGEMENT



IMPROVER

Higher
Premium

DT Improver

Source: Holland

HB No: 63000399595244

DOB: 15.03.05

Pedigree: O-Man X Aaron X Esquimau

Holstein Interbull Production Proof

PTA 2010 (08/11)

PLI	Milk Kg	Fat Kg	Fat %	Fat Kg	Protein %	Reliability	Daughters	Herds
£121	+284	+17.6	+0.08	+14.0	+0.06	78%	108	93



Hettie 38

HIGHLIGHTS

- ✓ Excellent Type, Udders and Legs & Feet
- ✓ Good Indexes for Production
- ✓ Calving Ease

BREEDING PROFILE

Improver daughters are impressive, strong, and robust cows with trouble-free legs and feet. Impressive udder attachment with excellent udder health.



Elsie 163



Leike 20



Hettie 38 Udder

DAUGHTER CONFORMATION

HOLSTEIN UK & IRELAND 08/11

Type Merit	+1.82	Excellent
Mammary	+1.32	Excellent
Legs & Feet	+1.90	Excellent
Stature	+1.28	154 cm
Chest Width	+1.40	Wide
Body Depth	+0.53	Deep
Angularity	-0.42	Sharp
Rump Angle	-0.31	Low Pins
Rump Width	+0.99	Wide
Rear Leg Side	-2.17	Sickled
Foot Angle	+1.58	Steep
Fore Udder Att	+1.57	Tight
Rear Udder Ht	+1.38	Very High
Udder Support	-0.65	Strong
Udder Depth	+1.95	20 cm Above
Front Teat Pl.	+0.04	Close
Teat Length	-0.68	Long
Rear Teat Pl.	-1.25	Close

MANAGEMENT

Calving Ease	103
Temperament	104
Milking Speed	105
Somatic Cell Count	+7
Lifespan	+0.1
Fertility Index	-1.5

JANCEN

Lynbrook Jancen ET

Source: Germany

HB No: 46272004770562

DOB: 20.10.04

Pedigree: O-Man X Manat X Basar

Holstein Interbull Production Proof

PTA 2010 (08/11)

PLI	Milk Kg	Fat Kg	Fat %	Fat Kg	Protein %	Reliability	Daughters	Herds
£251	+470	+32.8	+0.17	+25.1	+0.12	74%	132	52



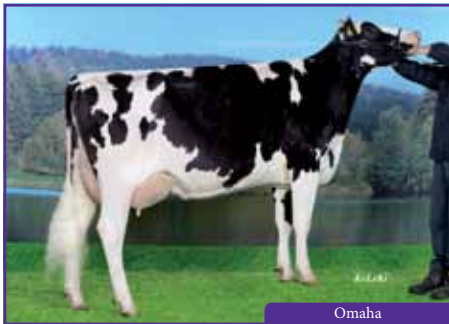
Ombra

HIGHLIGHTS

- No. 1 PLI Sire available in the UK
- +58 Kgs of Combined Fat and Protein
- Calving Ease

BREEDING PROFILE

Jancen is an extreme component specialist, bred from a cow family noted for their longevity and fertility. Jancen daughters have functional udders with good udder health.



Omaha



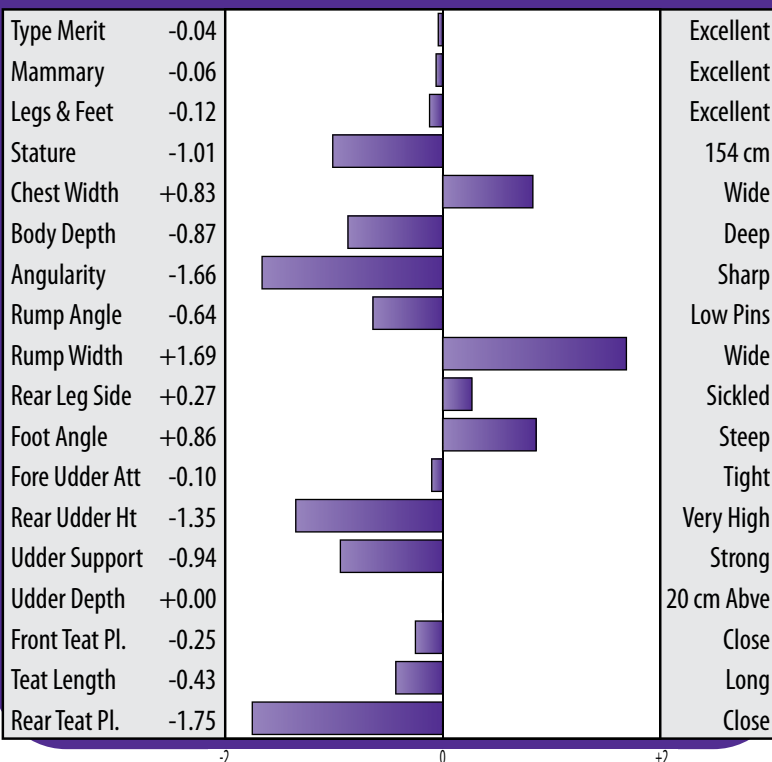
Omella



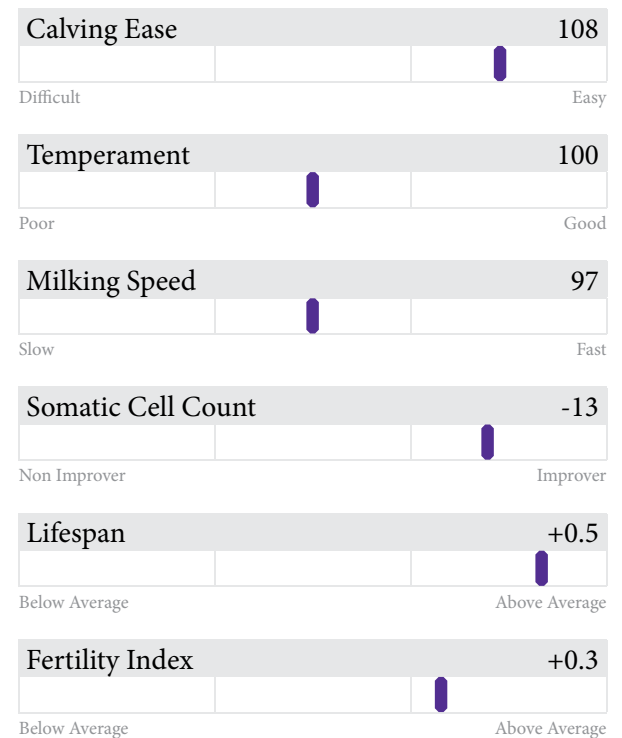
Lynbrook Oman Classic, dam of Jancen

DAUGHTER CONFORMATION

HOLSTEIN UK & IRELAND 08/11



MANAGEMENT



JARDIN

Jardin ET

Source: Germany

HB No: 60000345379222

DOB: 17.01.01

Pedigree: Jocko Besne X Tonic X Aerostar

Holstein Interbull Production Proof

PTA 2010 (08/11)

PLI	Milk Kg	Fat Kg	Fat %	Protein Kg	Protein %	Reliability	UK Daughters	UK Herds
£178	+619	+20.2	-0.05	+27.7	+0.09	92%	42	16



Kirkblythe Jardin Dolly VG86

HIGHLIGHTS

- No. 4 UK Proven Sire
- Protein Improver
- Excellent Udders

BREEDING PROFILE

Jardin now has UK milking daughters which are impressive heifers, excelling in udders and protein content. Jardin has increased significantly from £157 to £178 PLI. He also is recommended for Calving Ease, Temperament and Milking Speed.



Ghezzi



Schalmei



Maria 2nd Lactation

UK DAUGHTER CONFORMATION

HOLSTEIN UK & IRELAND 08/11

Type Merit	+1.44	Excellent
Mammary	+1.57	Excellent
Legs & Feet	+0.68	Excellent
Stature	+0.35	154 cm
Chest Width	+1.04	Wide
Body Depth	+0.77	Deep
Angularity	+0.39	Sharp
Rump Angle	-0.64	Low Pins
Rump Width	+1.08	Wide
Rear Leg Side	-0.28	Sickled
Foot Angle	+0.11	Steep
Fore Udder Att	+0.61	Tight
Rear Udder Ht	+1.79	Very High
Udder Support	+0.97	Strong
Udder Depth	+0.50	20 cm Above
Front Teat Pl.	+2.58	Close
Teat Length	-1.11	Long
Rear Teat Pl.	+1.57	Close
Teat Pos. Side	+0.12	Apart
Locomotion	+0.57	Excellent

MANAGEMENT

Calving Ease	104
Difficult	Easy
Temperament	+2.46
Poor	Good
Milking Speed	+1.82
Slow	Fast
Somatic Cell Count	+6
Non Improver	Improver
Lifespan	+0.1
Below Average	Above Average
Fertility Index	-1
Below Average	Above Average